

HC-12s**HC12s** NexStar™**Engineered for the Way You Work**

Auto Crane's HC-12s (hydraulic crane) is engineered specifically for Class 6 mechanic's trucks and equipped with the industry's leading, truly proportional truck-mounted crane control technology—NexStar™.

Key Specifications**Weight:**

1,900 lb (862 kg)

Single Line Speed:

60 ft/min (18.3 m/min)

Extended Boom Length:

25' (7.62 m)

Boom Elevation Range:

-12° - +75°

Boom Rotation:

370°, full, non-continuous

Hydraulic Requirements:

15 gpm (56.8 L/min)

at 3,000 psi (206.8 bar)

Cable:

120 ft (36.6 m) of 7/16" (11 mm)

aircraft quality cable

Control Options:

NexStar III, NexStar II, Hardwire

Warranty:

Two-year factory warranty

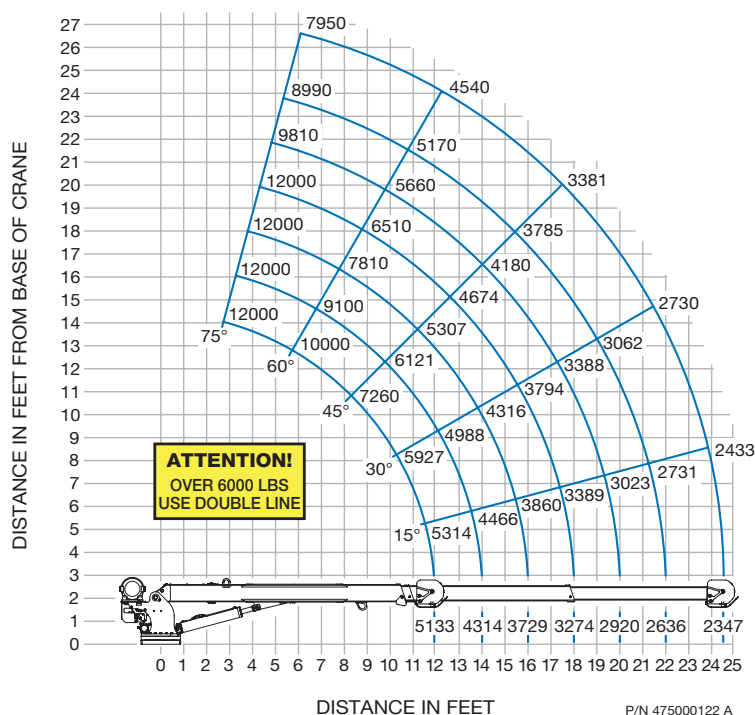


**AUTO
CRANE®**

**Engineered First.
Engineered to Last.**

MADE IN THE USA**Capacity: 12,000 lb (4,536 kg)****Rating: 60,000 ft-lb (8.30 tM)****Features and Benefits of NexStar™**

- **Automatic stop at 100% load capacity**
 - Keeps people, equipment, and loads safer
- **Adjustable speed settings; from 25% to 100%**
 - Enables fine tuning of speeds for total control over the load
- **Proportional control of multiple functions simultaneously and independently**
 - Adjust any function anytime to a different speed, for total control over the load
- **Level sensors monitor the angle of the truck and crane with the NexStar FM remote system on a Titan® crane body**
 - Prevents operation in unsafe, unlevel conditions
- **The NexStar FM remote system receiver displays load-monitoring and diagnostic readouts in plain English**
 - No codes to look-up or memorize; operator views precise percentage load capacity

**HC-12s
Load Chart**

Note: All capacities shown in lbs.
Weight of load handling devices are part of the load and must be deducted from the capacity.

Auto Crane® is a brand of Auto Crane Company, a wholly owned subsidiary of Ramsey Industries, Inc.

Engineered to be the best, Auto Crane is committed to the ongoing improvement of its products.
Auto Crane reserves the right to make changes to our products without notice.

autocrane.com | 4707 N. Mingo Road, Tulsa, OK 74117 | Phone: 918-438-2760 | Fax: 888-848-5445

© 2016. All rights reserved. SM_RI-0116, 9/16

HC-12**HC12** NexStar™**Engineered for the Way You Work**

Auto Crane's HC-12 (hydraulic crane) is engineered specifically for Class 7 mechanic's trucks and equipped with the industry's leading, truly proportional truck-mounted crane control technology—NexStar™.

Key Specifications**Weight:**

3,140 lb (1,379 kg)

Single Line Speed:

60 ft/min (18.3 m/min)

Extended Boom Length:

30' (9.14 m)

Boom Elevation Range:

-12° - +75°

Boom Rotation:

370°, full, non-continuous

Hydraulic Requirements:

15 gpm (56.8 L/min)
at 2,800 psi (193.05 bar)

Cable:

120 ft (36.6 m) of 7/16" (11 mm)
EEIPS galvanized wire rope

Control Options:

NexStar III, NexStar II, Hardwire

Warranty:

Two-year factory warranty

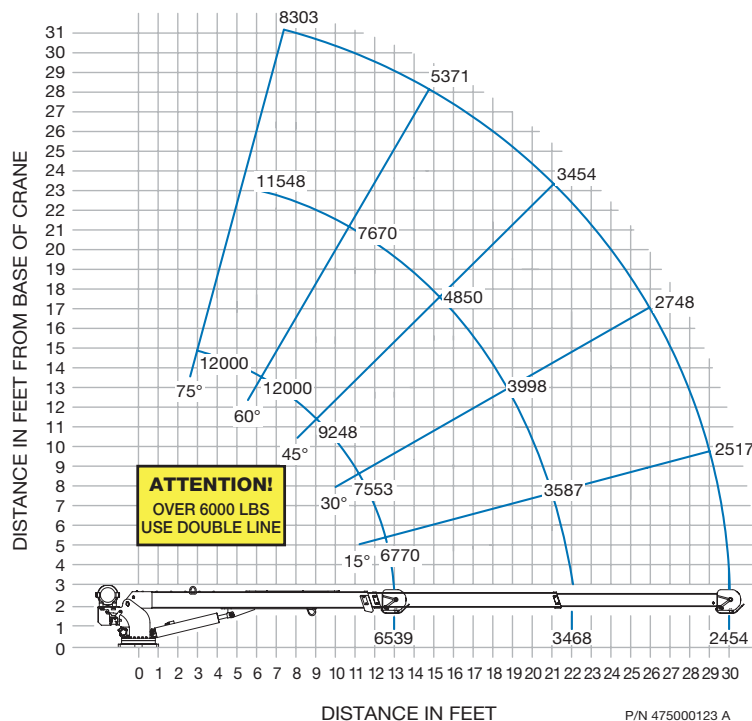


**AUTO
CRANE®**

**Engineered First.
Engineered to Last.**

MADE IN THE USA**Capacity: 12,000 lb (5,443 kg)****Rating: 85,000 ft-lb (9.68 tM)****Features and Benefits of NexStar™**

- **Automatic stop at 100% load capacity**
 - Keeps people, equipment, and loads safer
- **Adjustable speed settings; from 25% to 100%**
 - Enables fine tuning of speeds for total control over the load
- **Proportional control of multiple functions simultaneously and independently**
 - Adjust any function anytime to a different speed, for total control over the load
- **Level sensors monitor the angle of the truck and crane with the NexStar FM remote system on a Titan® crane body**
 - Prevents operation in unsafe, unlevel conditions
- **The NexStar FM remote system receiver displays load-monitoring and diagnostic readouts in plain English**
 - No codes to look-up or memorize; operator views precise percentage load capacity

**HC-12
Load Chart**

Note: All capacities shown in lbs.
Weight of load handling devices are part of the load and must be deducted from the capacity.

Auto Crane® is a brand of Auto Crane Company, a wholly owned subsidiary of Ramsey Industries, Inc.

Engineered to be the best, Auto Crane is committed to the ongoing improvement of its products.
Auto Crane reserves the right to make changes to our products without notice.

autocrane.com | 4707 N. Mingo Road, Tulsa, OK 74117 | Phone: 918-438-2760 | Fax: 888-848-5445

© 2016. All rights reserved. SM_RI-0116, 9/16