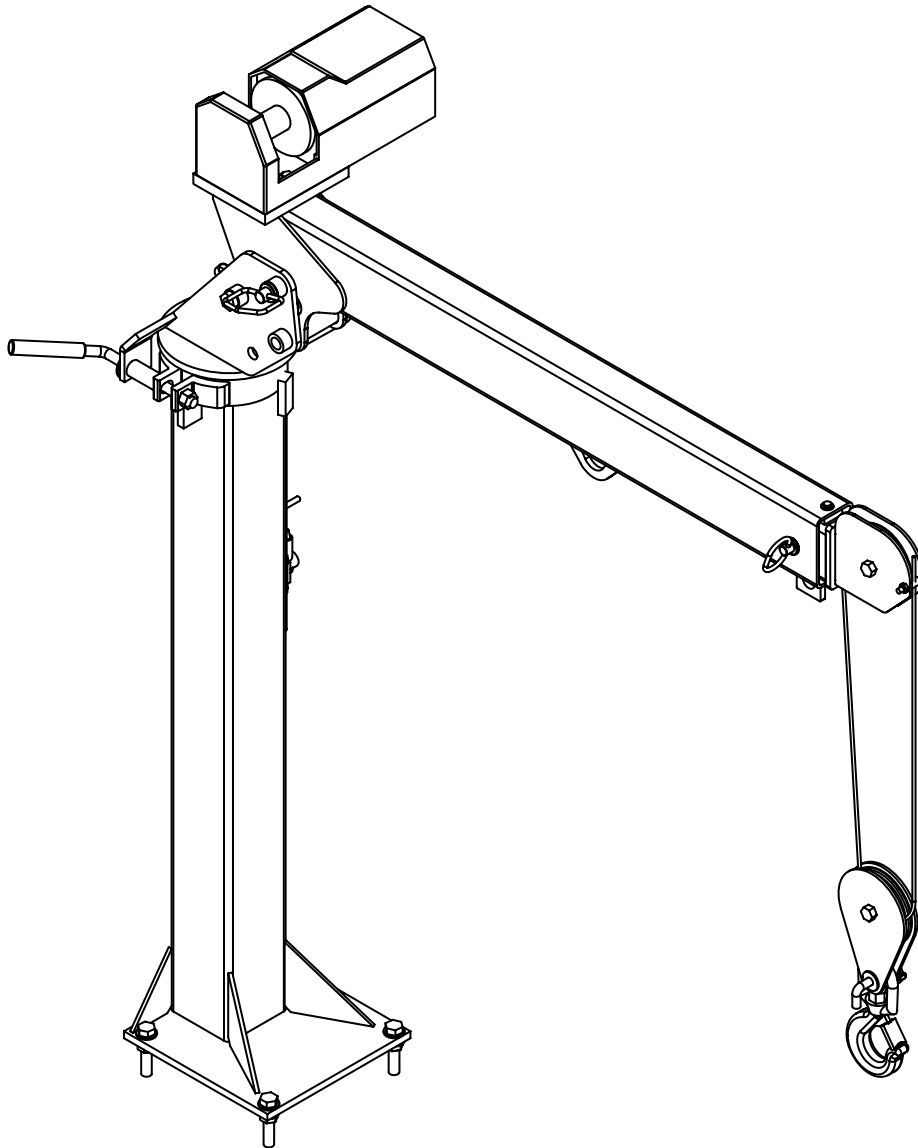




EC2000

Telescopic Crane
Owner's Manual

Safety • Maintenance • Installation • Assembly • Parts



Stellar Industries, Inc.

190 State Street

PO Box 169

Garner, IA 50438

800-321-3741

Fax: 641-923-2811

www.stellarindustries.com

Subject to change without notification.
© 2008 Stellar Industries, Inc.

Last Revision: 11/06/08

Crane Manual Revisions

Date of Revision	Section Revised	Description of Revision

Table of Contents

<i>Contents</i>	
<i>Crane Manual Revisions</i>	2
<i>Table of Contents</i>	3
<i>Introduction</i>	5
<i>Crane Specifications</i>	6
Chapter 1 - Safety	7
Chapter 2 - Operation	9
Chapter 3 - Installation	11
Installation Instructions	11
Wiring Schematic - Power Rotation	12
Wiring Schematic - Manual Rotation	12
Control Kit Power Rotation - PN 22930	13
Decal Kit - PN 18776	14
Decals of Note.....	14
Gear-Bearing Bolt Maintenance	15
Torque Data Chart	15
Chapter 4 - Assembly Drawings	17
EC2000 Crane (Standard) - PN 17631	17
EC2000 Crane (50' Wire Rope) - PN 33939	18
EC2000 Crane (Short Mast) - PN 19146	19
EC2000 Crane (Power Rotation) - PN 22601	20
EC2000 Crane (Power Rotation Short) - PN 24906.....	21
EC2000 Crane (LH Mount) - PN 56658.....	22
Control Kit Power Rotation - PN 22930	23
Chapter 5 - Replacement Parts	25
<i>Warranty Information</i>	26

AN OVERVIEW TO OWNER, OPERATOR AND SERVICE PERSONNEL ABOUT SAFETY

As the owner or employer, it is your responsibility to instruct the operator in the safe operation of this equipment and to provide the operator with properly maintained equipment.

Failure to read this manual by anyone who will operate, service, or work around this crane is a misuse of the equipment. Death or serious injury will result from improper use or maintenance of this machine.

Occupational safety is a prime concern of Stellar Industries in the design and production of this crane. Our goal in writing this manual was the safety of the operator and others who work around this equipment.

It is your responsibility to know the specific requirements, governmental regulations, precautions and work hazards that exist in the operation and maintenance of this crane. You shall make these available and known to all personnel working with and around the equipment, so that all of you will take the necessary and required safety precautions.

FAILURE TO HEED THESE INSTRUCTIONS CAN RESULT IN SERIOUS INJURY OR DEATH.

It is also your responsibility to operate and maintain your crane with caution, skill, and good judgment. Following the recognized safety procedures will help you avoid accidents. Modification to any part of this crane can create a safety hazard and therefore shall not be made without the manufacturer's written approval. Use only factory approved accessories, options, and parts on this equipment. The rebuilding or remounting of this equipment requires the mounting procedures and retesting to be in accordance with factory instructions. Safety covers and devices must remain installed and maintained in proper working condition. Safety decals must be maintained, be completely legible, and be properly located. If safety covers, devices, or decals are missing, they must be replaced with the proper designated Stellar part.

Be capable, careful, and concerned! Make safety your everyday business!

Attention!

According to Federal Law (49 cfr part 571), each final-stage manufacturer shall complete the vehicle in such a manner that it conforms to the standards in effect on the date of manufacture of the incomplete vehicle, the date of final completion, or a date between those two dates. This requirement shall, however, be superseded by any conflicting provisions of a standard that applies by its terms to vehicles manufactured in two or more stages.

Therefore, the installer of Stellar cranes is considered one of the manufacturers of

the vehicle. As such a manufacturer, the installer is responsible for compliance with all applicable federal and state regulations. They are required to certify that the vehicle is in compliance with the Federal Motor Vehicle Safety Standards and other regulations issued under the National Traffic and Motor Vehicle Safety Act.

Please reference the Code of Federal Regulations, title 49 - Transportation, Volume 5 (400-999), for further information, or visit www.gpoaccess.gov/nara/index.html for the full text of Code of Federal Regulations.

Introduction

Stellar Cranes are designed to provide safe and dependable service. With proper use and maintenance, these cranes will operate at peak performance for many years.

To promote this longevity, carefully study the information contained in this manual before putting the equipment into service. Though it is not intended to be a training manual for beginners, this manual should provide solid guidelines for the safe and proper usage of the crane.

Once you feel comfortable with the material contained in this manual, strive to exercise your knowledge as you safely operate and maintain the crane. This process is vital to the proper use of the unit.

A few notes on this manual:
A copy of this manual is provided with every crane and shall remain with the crane at all times. Information contained within this manual does not cover all maintenance, operating, or repair instructions pertinent to

all possible situations.

Please be aware that some sections of this manual contain information pertaining to Stellar manufactured cranes in general and may or may not apply to your specific model.

This manual is not binding. Stellar Industries, Inc. reserves the right to change, at any time, any or all of the items, components, and parts deemed necessary for product improvement or commercial/production purposes. This right is kept with no requirement or obligation for immediate mandatory updating of this manual.

In closing:

If more information is required or technical assistance is needed, or if you feel that any part of this manual is unclear or incorrect, please contact the Stellar Customer Service Department by phone at 800-321-3741 or email at service@stellarindustries.com.

ATTENTION

Failure to adhere to the instructions could result in property damage or even serious bodily injury to the operator or others close to the crane.

**For Technical Questions, Information, Parts, or Warranty, Call Toll-Free at
800-321-3741**

Hours: Monday - Friday, 8:00 am - 5:00 pm CST

Or Email at the following addresses:

Technical Questions, and Information

service@stellarindustries.com

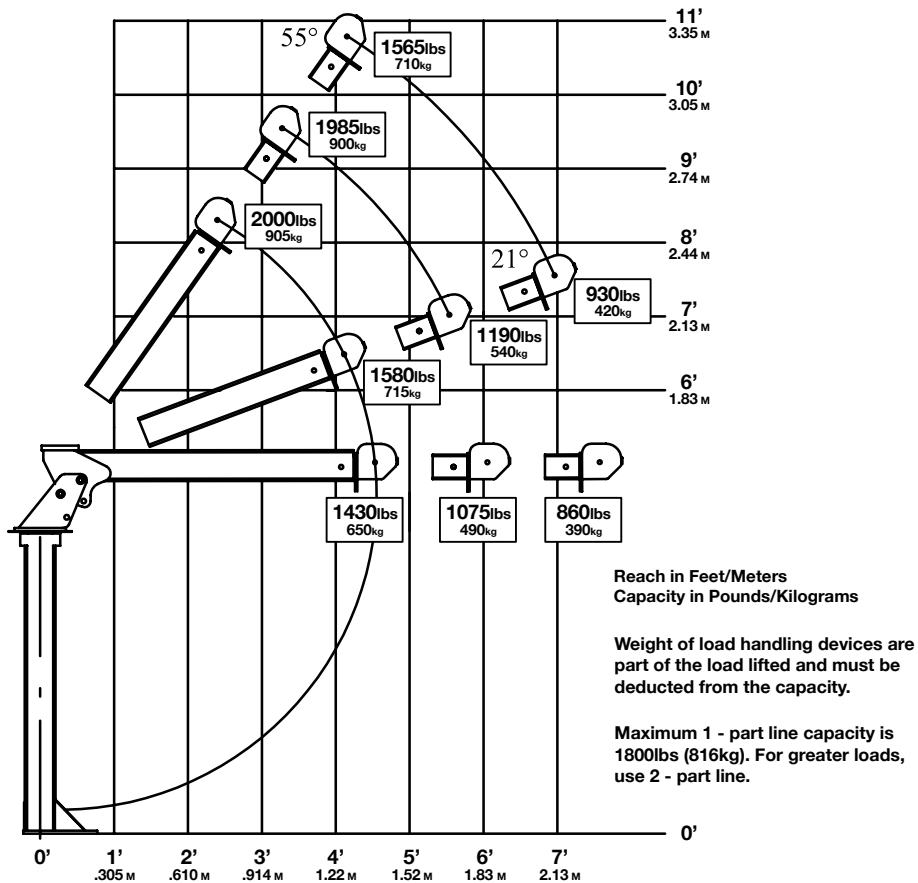
Order Parts

parts@stellarindustries.com

Warranty Information

warranty@stellarindustries.com

Crane Specifications



Crane Rating:	6500 ft-lbs (.899 ton-meters)
Standard Boom Length:	4' (1.219 m) from CL of Crane
Boom Extension:	1st Position: Manual 18" (45.7 cm) 2nd Position: Manual 18" (45.7 cm)
Maximum Horizontal Reach:	7' (2.13 m) from CL of Crane
Maximum Vertical Lift (from crane base):	10'9" (3.28 m)
Boom Elevation:	0 to +21 to +56 degrees
Winch Specification	
Rope Diameter:	3/16" (.476 cm)
Line Pull Speed:	20 ft/min (6.10 m)
Max. Single Part Line:	1800 lbs (816 kg)
Max. Double Part Line:	2000 lbs (905 kg)
Manual Rotation:	340° Manual
Power Rotation:	314° Power
Lifting Capacities:	1580 lbs @ 4' (715 kg @ 1.219 m) 1190 lbs @ 5'6" (540 kg @ 1.676 m) 930 lbs @ 7' (420 kg @ 2.13 m)
Stowed Height:	60" (152.4 cm)
Crane Only:	30" (76.2 cm) - Short Mast
Mounting Space Required:	12" x 12" (30.5 cm x 30.5 cm)
Approximate Shipping Weight:	275 lbs (124.7 kg) 230 lbs (104.3 kg) - Short Mast 300 lbs (136.1 kg) - Power Rotation

Chapter 1 - Safety

Please Read the Following Carefully! This portion of the manual contains information regarding all Stellar manufactured cranes. Some items contained within this chapter may not apply to your specific equipment.

Safety should be the number one thought on every operator's mind. Three factors should exist for safe operation: a qualified operator, well-maintained equipment, and the proper use of this equipment. The following information should be read and understood completely by everyone working with or near the crane before putting the unit into operation.

Please take note that Stellar Industries, Inc. is not liable for accidents incurred by the crane because of non-fulfillment from the operator's side of current rules, laws, and regulations.

GENERAL

It is the responsibility of the owner to instruct the operator in the safe operation of your equipment and to provide the operator with properly maintained equipment.

Trainees or untrained persons shall be under the direct supervision of qualified persons.

Do not operate equipment under the adverse influence of alcohol, drugs, or medication.

PERSONAL SAFETY

Keep clear of all moving parts.

Always wear the prescribed personal safety devices.

Always wear approved accident-prevention clothing such as: protective helmets, anti-slip shoes with steel toes, protective gloves, anti-noise headphones, protective glasses,

and reflective jackets with breathing apparatus. Consult your employer regarding current safety regulations and accident-prevention equipment.

Do not wear rings, wristwatch, jewelry, loose-fitting or hanging clothing such as ties, torn garments, scarves, unbuttoned jackets or unzipped overalls, which could get caught up in the moving parts of the crane.

Keep a first-aid box and a fire extinguisher readily available on the truck. Regularly check to make sure the fire extinguisher is fully charged and the first-aid kit is stocked.

Do not use controls and hoses as handholds. These parts move and cannot provide stable support.

Never allow anyone to ride the crane hook or load.

MAINTENANCE SAFETY

Never modify or alter any of the equipment, whether mechanical, electrical, or hydraulic, without explicit approval from Stellar Industries.

Do not perform any maintenance or repair work on the crane unless authorized and trained to do so.

Failure to correctly plumb and wire the crane can cause a malfunction and damage to the crane and/or operator.

Decals are considered safety equipment. They must be maintained, as would other safety devices. Do not remove any Decals. Replace any Decals that are missing, damaged, or not legible.

The safety instruction plates, notices, load charts and any other sticker applied to the crane or service body must be kept legible

and in good condition. If necessary, replace them.

STABILITY

Know the crane components and their capabilities and limitations. Overloading the crane may result in serious injury to self and others, and damage to the equipment and immediate surroundings.

Never exceed manufacturer's load ratings. These ratings are based on the machine's hydraulic, mechanical, and structural design rather than stability.

The supporting surface under the service truck must be able to support the weight of the machine and its load.

Set the parking brake and disengage the drive axle before attempting a lift.

LOAD SAFETY

Operate the crane in compliance with the load capacity chart at all times. Know the weight of the load being lifted. Do not rely on the overload device to determine maximum rated loads. If the crane is picking more than the maximum rated load, the overload protection device may be malfunctioning. Discontinue use immediately and contact Stellar Customer Service for support.

Never use a sling bar or anything larger than the hook throat that could prevent the hook latch from closing. This would negate the safety feature.

Do not apply side loads to the booms.

Do not leave a crane load suspended or unattended.

Do not walk under suspended loads.

Do not position any load over a person nor should any person be permitted to place him or herself under a load.

Do not use the boom or the winch to drag a load.

Do not use the crane boom to push downward onto anything.

ELECTROCUTION

Allow extra space for swaying power lines in windy conditions.

Keep a minimum of ten feet between any portion of the crane and an electrical line. Add an additional 12" for every additional 30,000 Volts or less.

Remember - Death or serious injury can occur when working near power lines or during electrical storms.

Use a signal person when operating near electrical sources.

ENVIRONMENT

Do not operate the crane during electrical storms.

In dusty work areas, every effort must be taken to keep dust and sand out of the moving parts of the machinery.

In high humidity work areas, keep parts as dry as possible and well lubricated.

Chapter 2 - Operation

This chapter contains information regarding the operation of Stellar manufactured telescopic cranes. Please study the following pages to ensure your familiarity with the operation process. This understanding is vital to the safe and efficient operation of the crane.

Job-Site Set-Up

Thoroughly plan the lift before positioning the vehicle. Consider the following:

1. The vehicle should be positioned in an area free from overhead obstructions to eliminate the need for repositioning.
2. Position the vehicle so that it is impossible for any portion of the equipment to come within the minimum required safe distance of any power line. Maintain a clearance of at least 10 feet between any part of the crane, load line, or load, and any electrical line or apparatus carrying up to 50,000 volts. One foot additional clearance is required for every additional 30,000 volts or less. Remember to allow for winds that cause power lines to sway. It is recommended that a signal person be used when the vehicle is set-up near power lines.

Crane Controls

1. Be familiar with the sequence and operation of the crane controls.
2. Each individual crane function should have control function decals. Replace them immediately if they are missing or illegible.
3. Keep hands, feet, and control levers free from mud, grease, and oil.
4. Be familiar with the remote control and how it operates before attempting to lift a load.
5. Be prepared before beginning operation of the crane:
 - All protective guards must be in place.
 - Be aware of the surroundings: low branches, power lines, unstable ground.
 - Be sure all safety devices provided are in place and in good operating condition.
 - Be prepared for all situations. Keep fire extinguisher and first aid kit near.
 - Be sure all regular maintenance has been performed.
 - Visually inspect all aspects of the crane for physical damage.



Power Rotation Remote



Manual Rotation Remote

Basic Operation

1. Turn on power to crane. The power switch will be located on the crane or in the cab.
2. Operate crane as desired using the appropriate remote.
3. Stow the crane when finished.
4. Power down crane.

ATTENTION

Stellar Industries, Inc. is not liable for accidents incurred by the crane because of the operator's non-fulfillment of current rules, laws and regulations.

Chapter 3 - Installation

Installation Instructions

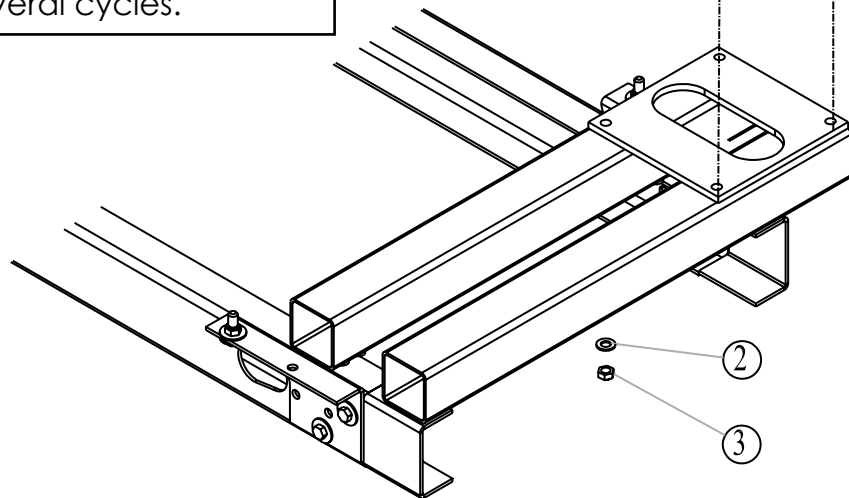
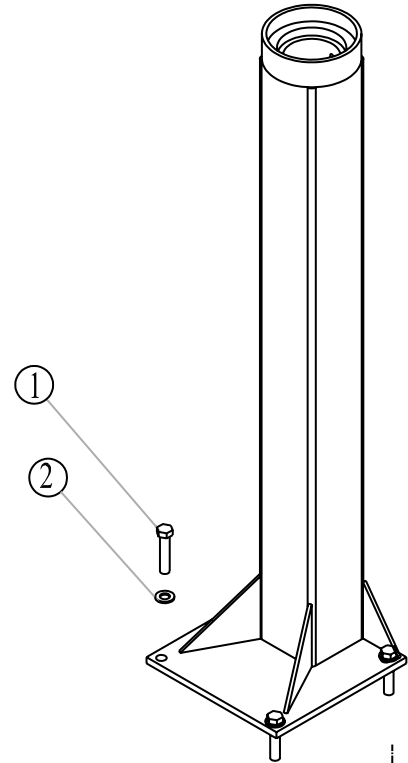
Installation Instructions:

Prepare Platform For Crane Installation (Not Supplied)

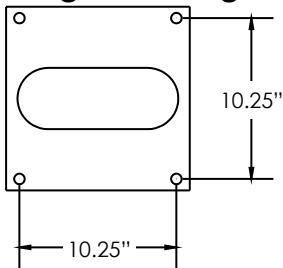
1. When designing the platform, maintain a proper clearance for the crane mounting and operation.
2. The platform must be strong enough to support the crane and rated load.
3. Platform/crane support minimum requirements: Top plate should be made from 0.50" grade 50 plate. The structure should be supported by 4 x 4 x 3/16 tubing.

Mounting Instructions:

1. Lower the crane onto the mounting platform.
2. Mount the crane using 5/8" grade 8 bolts, flat washers, and nyloc nuts.
3. Connect power (+12V) and ground wires per winch manufacturer's specifications. **Power Rotation:** Route 4 ga. wires (not included) from junction box to power (+12V) and ground. **Recommended:** Use solenoid and a toggle switch to power the crane.
4. Operate the crane for several cycles.

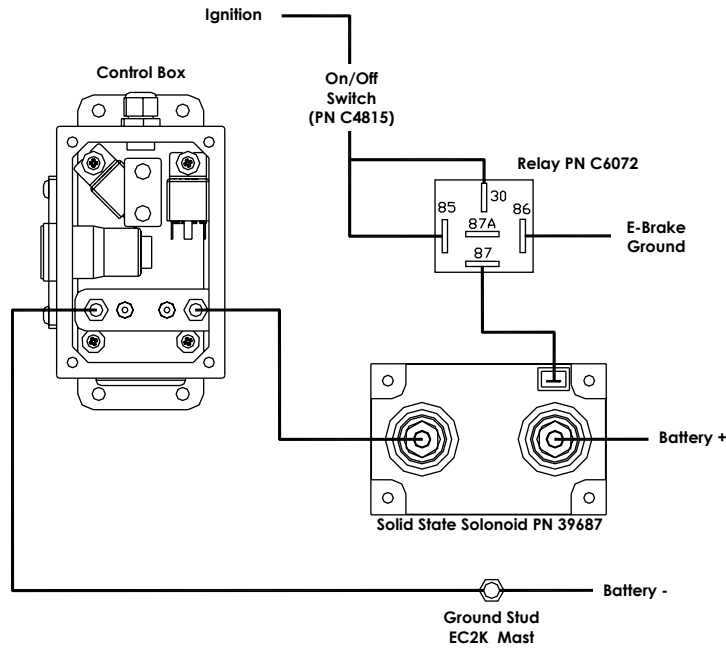


Mounting Hole Diagram

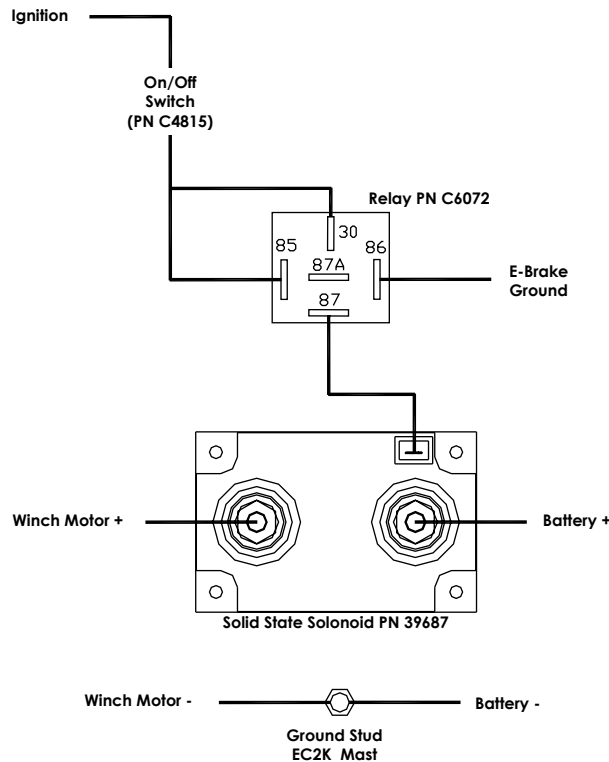


Item No.	Part No.	Description	Qty.
1	D1034	CAP SCR 0.63-11 X 3.00 HHGR8 ZY	4
2	C5902	WASHER 0.63 FLAT GR8	8
3	2826	NUT 0.63-11 HH NYLOC	4

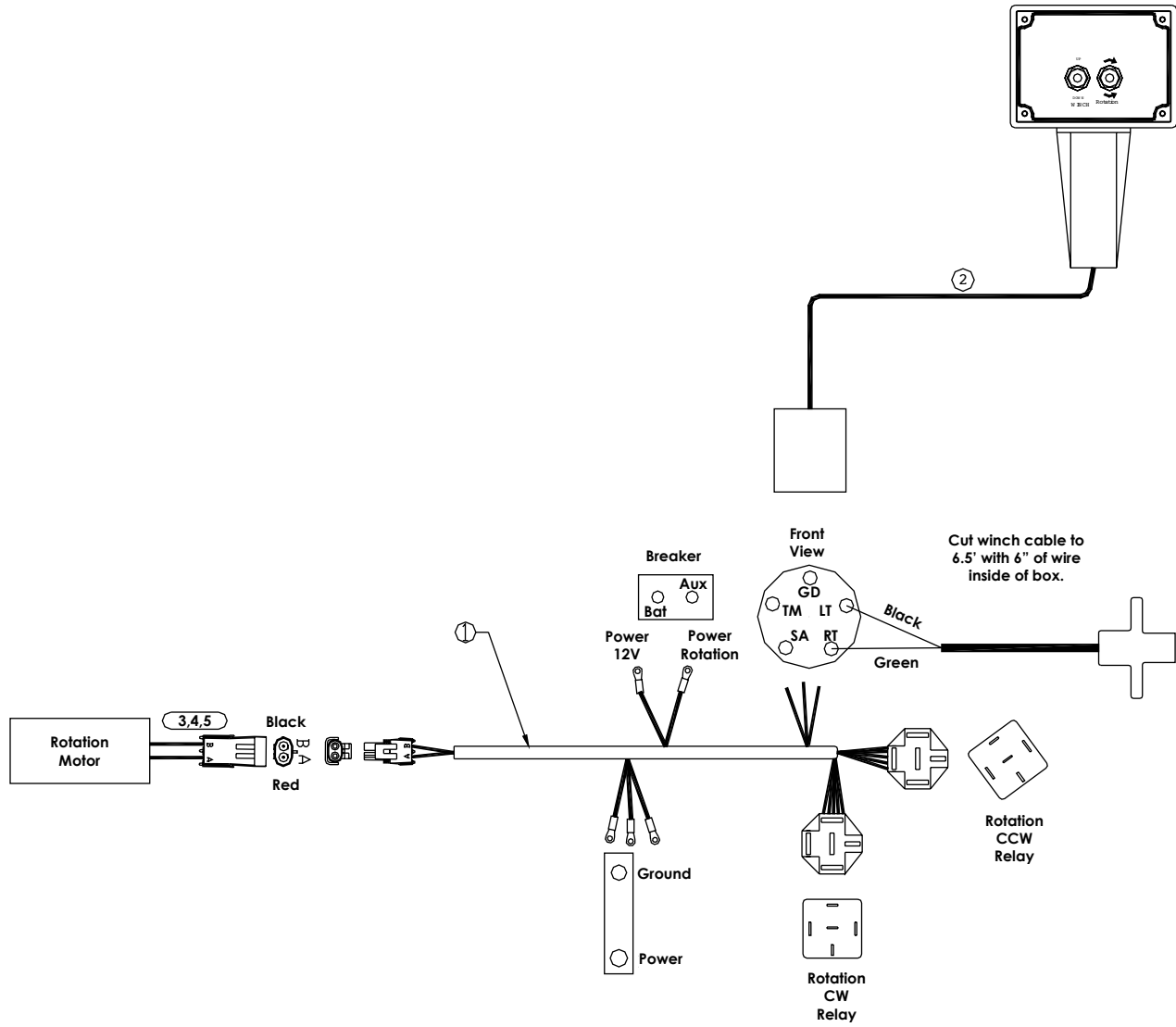
Wiring Schematic - Power Rotation



Wiring Schematic - Manual Rotation

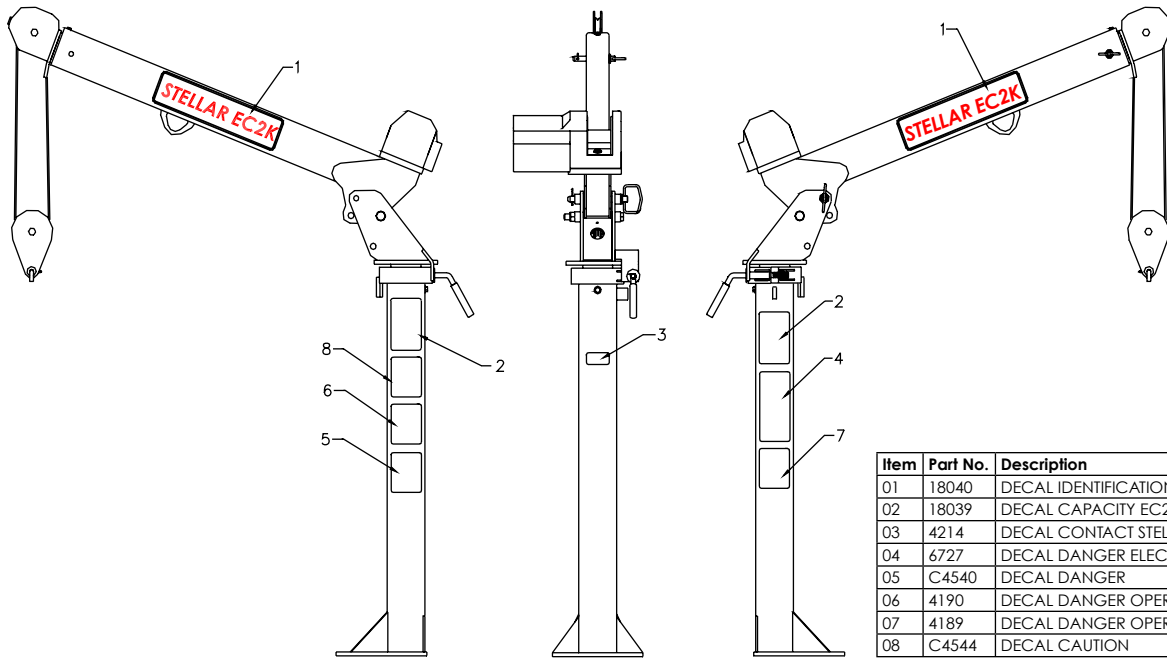


Control Kit Power Rotation - PN 22930



ITEM	PART NO.	DESCRIPTION	QTY
01	28834	WIRE HARNESS	1
02	22932	HANDLE ASM 2 FCTN EC2K POWER	1
03	9751	CONNECT 2 PIN SHROUD PACKARD	1
04	11359	CABLE SEAL 14-16 PACKARD 39001	2
05	13564	CONTACT M TERM SHROUD 12 32038	2

Decal Kit - PN 18776



Decals of Note

! DANGER

FAILURE TO OBEY THE FOLLOWING WILL RESULT IN

DEATH OR SERIOUS INJURY

INSTABILITY OR STRUCTURAL DAMAGE

- Read, understand and follow the equipment load and work area charts.
- Do not exceed winch or equipment ratings.
- Weights of accessories attached to the boom or loadline must be deducted from the load chart ratings or be added to the load weight.
- Do not exceed jib load ratings at reduced boom lengths.

4189

! DANGER

FAILURE TO OBEY THE FOLLOWING WILL RESULT IN

DEATH OR SERIOUS INJURY

- Follow all recommended inspections and maintenance practices listed in the equipment manufacturer's manuals. If manuals are missing from this equipment, contact manufacturer for replacement.
- Do not modify or alter this equipment without written manufacturer's approval. Use only manufacturer approved attachments or parts on this equipment.
- Equipment must be mounted on factory recommended chassis. If re-mounted or rebuilt, the equipment must be re-certified.

4190

! DANGER

**ELECTROCUTION HAZARD
THIS CRANE IS NOT INSULATED**

DEATH OR SERIOUS INJURY WILL RESULT FROM CONTACT OR INADEQUATE CLEARANCE

- Main safe clearances from electrical lines. This crane does not provide protection from contact with or proximity to an electrically charged conductor. Allow for boom, electrical line and load line swaying.
- Maintain a clearance of at least 10 feet between any part of the crane, load line or load and any electrical line carrying up to 50,000 volts.
- One foot additional clearance is required for every additional 30,000 volts or less.

! DANGER

**AN UNTRAINED OPERATOR
SUBJECTS HIMSELF AND
OTHERS TO**

DEATH OR SERIOUS INJURY

**YOU MUST NOT OPERATE
THIS EQUIPMENT UNLESS**

- You have been trained in the safe operation of this equipment.
- You read, understand and follow the safety and operating recommendations contained in the equipment manufacturer's manuals, your employer's work rules and applicable government regulations.

C4540

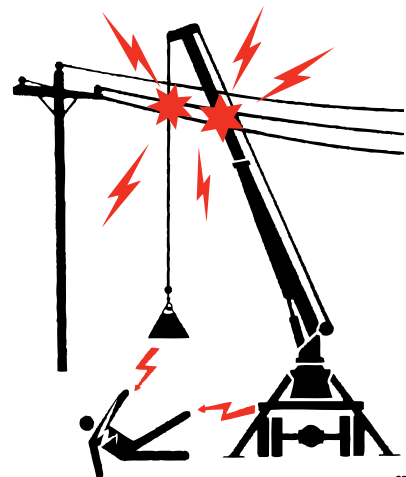
! DANGER

FAILURE TO OBEY THE FOLLOWING WILL RESULT IN

DEATH OR SERIOUS INJURY

- Inspect equipment and its operation daily.
- For equipment stability, use only on solid, level surface with outriggers properly extended.
- Equipment must be level.
- Operate all controls slowly and smoothly.
- Never operate the equipment with personnel under boom or load.
- Keep load underboom tip. Do not side load boom or drag loads. Avoid free swinging loads.
- Keep at least 3 wraps of loadline on winch drum.
- For travel, boom and outriggers must be in stowed position.

C4544

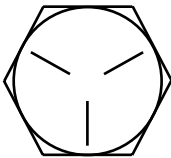
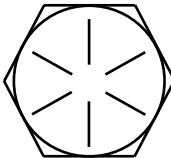
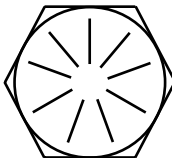


6727

Gear-Bearing Bolt Maintenance

Anytime a gear-bearing bolt is removed, it must be replaced with a new bolt of the identical grade and size. Once a bolt has been torqued to 75% of its proof load and then removed, the torque coefficient may no longer be the same as when the bolt was new thus giving indeterminate damp loads after torquing.

Torque Data Chart

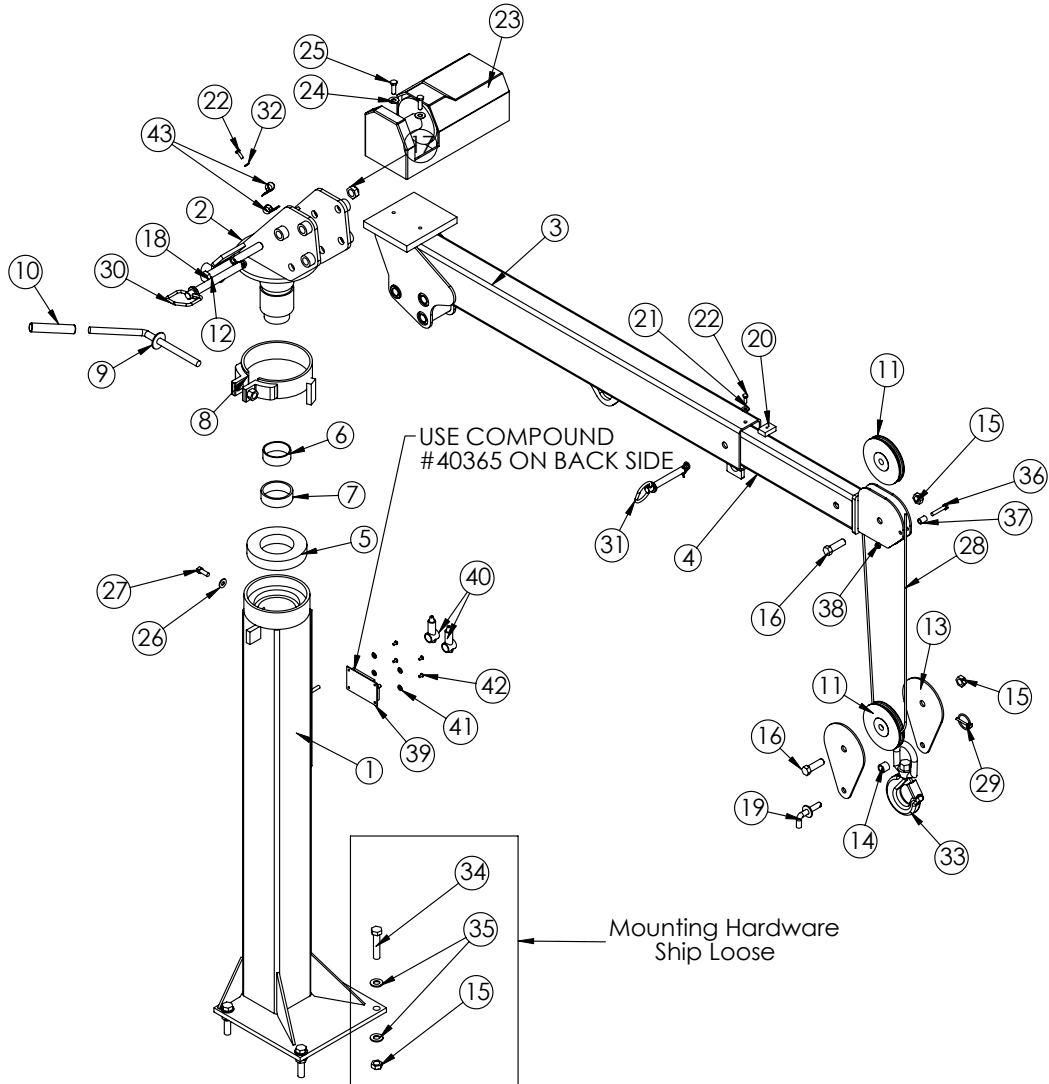
		Grade 5 		Grade 8 		Grade 9 
Size	Bolt DIA	Plain	Plated	Plain	Plated	Plated
(DIA-TPI)	(Inches)	(Ft-Lbs)	(Ft-Lbs)	(Ft-Lbs)	(Ft-Lbs)	(Ft-Lbs)
5/16-18	0.3125	17	13	25	18	22
3/8-16	0.3750	31	23	44	33	39
7/16-14	0.4375	49	37	70	52	63
1/2-13	0.5000	75	57	105	80	96
9/16-12	0.5625	110	82	155	115	139
5/8-11	0.6250	150	115	220	160	192
3/4-10	0.7500	265	200	375	280	340
7/8-9	0.8750	395	295	605	455	549
1-8	1.000	590	445	910	680	823
1 1/8-7	1.1250	795	595	1290	965	1167
1 1/4-7	1.2500	1120	840	1815	1360	1646
1 3/8-6	1.3750	1470	110	2380	1780	2158
1 1/2-6	1.500	1950	1460	3160	2370	2865

When using the torque data in the charts above, the following rules should be observed:

1. Bolt manufacturer's particular specifications should be consulted when provided.
2. Flat washers of equal strength must be used.
3. All torque measurements are given in foot-pounds. To convert to inch-pounds, multiply by 12.
4. Torque values specified are for bolts with residual oils or no special lubricants applied. If special lubricants of high stress ability, such as Never-Seez compound graphite and oil, molybdenum disulphite, colloidal copper or white lead are applied, multiply the torque values in the charts by the factor .90. The use of Loctite does not affect the torque values listed above.
5. Torque values for socket-head capscrews are the same as for Grade 8 capscrews.

Chapter 4 - Assembly Drawings

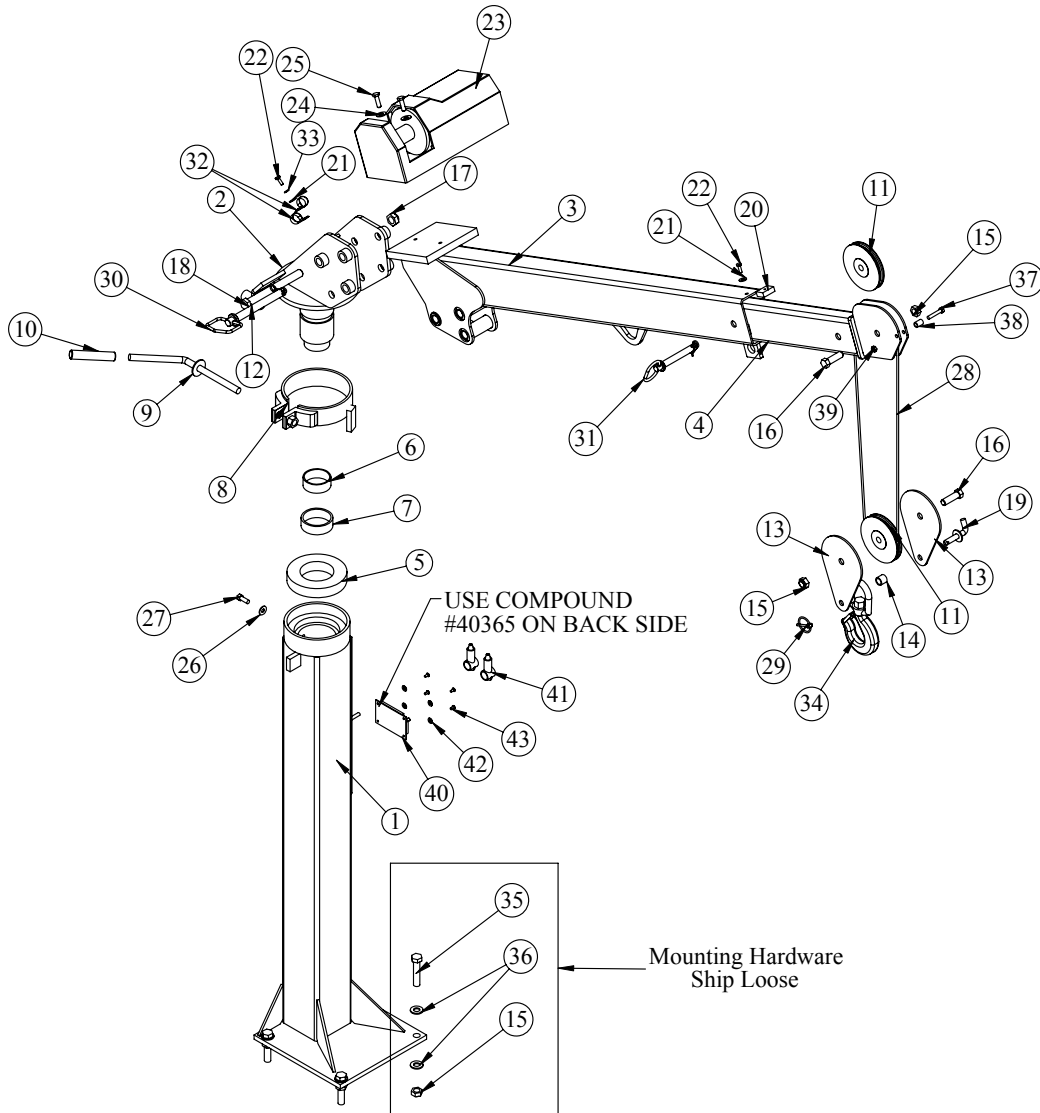
EC2000 Crane (Standard) - PN 17631



PN 17631

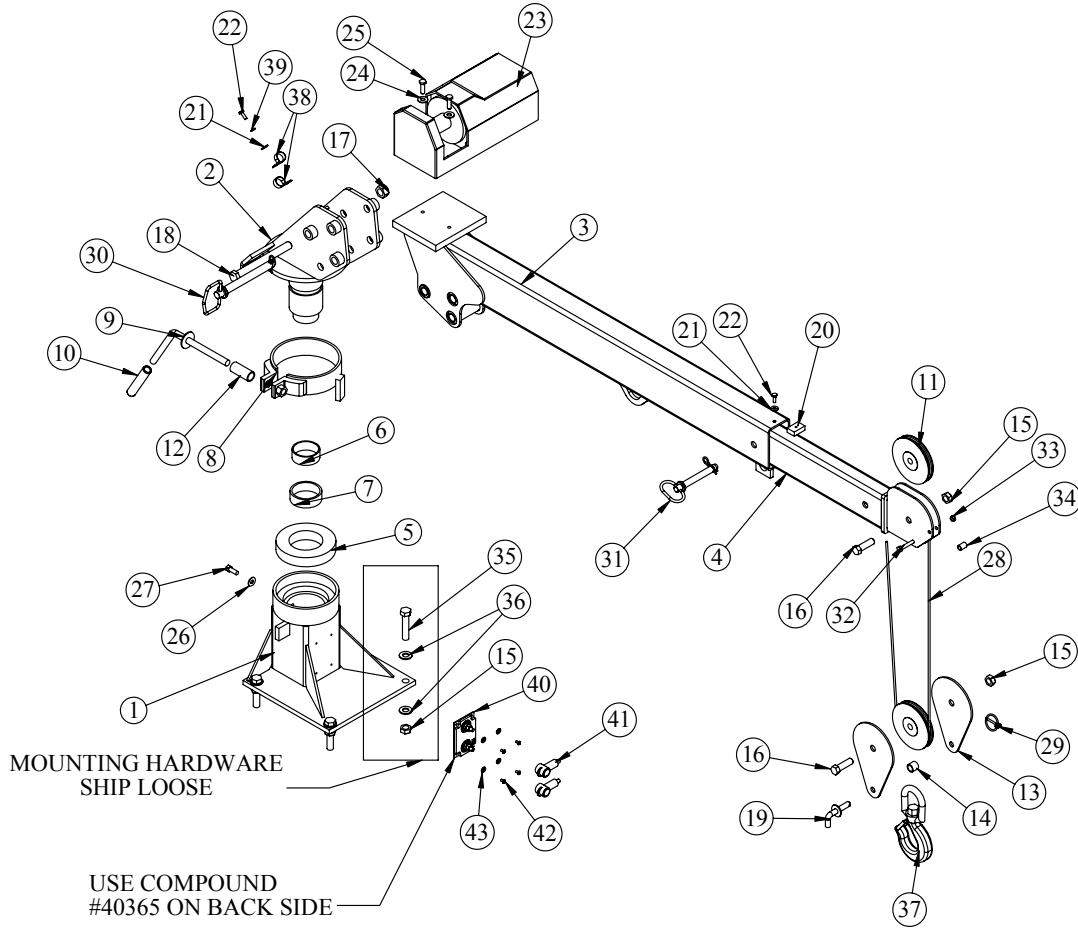
ITEM	PART	DESCRIPTION	QTY.	ITEM	PART	DESCRIPTION	QTY.
1	39693	BASE EC2K	1	23	18774	WINCH 1000 03002	1
2	17600PC	MAST EC2K	1	24	C6353	WASHER 0.38 FLAT GR8	2
3	39691	MAIN BOOM EC2K	1	25	13576	CAP SCR 0.38-16X1.25 HHGR8	2
4	39690	EXT BOOM EC2K	1	26	0346	WASHER 0.38 FLAT	1
5	18069	BEARING RADIAL BALL 6" BRB6217-2RS	1	27	0351	CAP SCR 0.38-16X1.00 HHGR5	1
6	18068	RACE INNER 2.50" TORIR-4016	1	28	18773	WIRE ROPE 3/16 7X19 GAC 40FT	1
7	18067	BEARING DRAWN CUP NEEDLE 2.75" TORB-4416	1	29	5753	PIN 0.19X1.56 LYNCH	1
8	18475PC	BRAKE WELDMENT EC2K	1	30	18778	PIN HITCH 0.75X6.25 W/ LANYARD	1
9	18483PC	HANDLE WELDMENT EC2K	1	31	18777	PIN HITCH 0.63X4.00 W/ LANYARD	1
10	18485	HANDLE GRIP EC2K	1	32	0521	WASHER 0.25 LOCK	1
11	17222	SHEAVE EC2K 5.00 DIA .19R/.75 THK	2	33	C6018	HOOK CRANE-3 TON	1
12	18711PC	PIPE 0.75 SCH40X2.38	1	34	D1034	CAP SCR 0.63-11 X 3.00 HHGR8 ZY	4
13	17965PC	PLATE EC2K SNATCH BLOCK	2	35	C5902	WASHER 0.63 SAE FLAT YELLOW GR8	8
14	18036PC	SPACER SNATCH BLOCK EC2K	1	36	0487	CAP SCR 0.31-18X1.75 HHGR5	1
15	2826	NUT 0.63-11 HH NYLOC	6	37	19374PC	SPACER BOOM TIP EC2K	1
16	0399	CAP SCR 0.63-11X2.00 HHGR5	2	38	0342	NUT 0.31-18 HH NYLOC	1
17	C0538	NUT 0.75-10 HHGR8 NYLOC	1	39	39687	SOLENOID SOLID STATE SSC 10-100	1
18	18712	CAP SCR 0.75-10X7.50 HHGR8 ZY	1	40	37751	BOOT TERML SOLENOID SOLID TB-22-2	2
19	18714PC	PIN WELDMENT LATCHING	1	41	D0178	WASHER #10 SAE FLAT ZINC	4
20	18715PC	STOP EXT EC2K	1	42	40364	SCREW #10-24X0.38 BTNHD SS	4
21	0340	WASHER 0.25 FLAT	2	43	C0078	HOSE CLAMP #8 RUBBER COATED	2
22	0479	CAP SCR 0.25-20X0.75 HHGR5	2				

EC2000 Crane (50' Wire Rope) - PN 33939



ITEM	PART	DESCRIPTION	QTY.	ITEM	PART	DESCRIPTION	QTY.
1	39693	BASE EC2K	1	23	18774	WINCH 1000 03002	1
2	17600PC	MAST EC2K	1	24	C6353	WASHER 0.38 FLAT GR8	2
3	39691	MAIN BOOM EC2K	1	25	13576	CAP SCR 0.38-16X1.25 HHGR8	2
4	39690	EXT BOOM EC2K	1	26	0346	WASHER 0.38 FLAT	1
5	18069	BEARING RADIAL BALL 6" BRB6217-2RS	1	27	0351	CAP SCR 0.38-16X1.00 HHGR5	1
6	18068	RACE INNER 2.50" TORIR-4016	1	28	33940	WIRE ROPE 3/16 7X19 IWRC-XIP 50 FT	1
7	18067	BEARING DRAWN CUP NEEDLE 2.75" TORB-4416	1	29	5753	PIN 0.19X1.56 LYNCH	1
8	18475PC	BRAKE WELDMENT EC2K	1	30	18778	PIN HITCH 0.75X6.25 W/ LANYARD	1
9	18483PC	HANDLE WELDMENT EC2K	1	31	18777	PIN HITCH 0.63X4.00 W/ LANYARD	1
10	18485	HANDLE GRIP EC2K	1	32	C5946	HOSE CLAMP #8 RUBBER COATED	2
11	17222	SHEAVE EC2K 5.00 DIA .19R/.75 THK	2	33	0521	WASHER 0.25 LOCK	1
12	18711PC	PIPE 0.75 SCH40X2.38	1	34	C6018	HOOK CRANE-3 TON	1
13	17965PC	PLATE EC2K SNATCH BLOCK	2	35	D1034	CAP SCR 0.63-11 X 3.00 HHGR8 ZY	4
14	18036PC	SPACER SNATCH BLOCK EC2K	1	36	C5902	WASHER 0.63 SAE FLAT YELLOW GR8	8
15	2826	NUT 0.63-11 HH NYLOC	6	37	0487	CAP SCR 0.31-18X1.75 HHGR5	1
16	0399	CAP SCR 0.63-11X2.00 HHGR5	2	38	19374PC	SPACER BOOM TIP EC2K	1
17	C0538	NUT 0.75-10 HHGR8 NYLOC	1	39	0342	NUT 0.31-18 HH NYLOC	1
18	18712	CAP SCR 0.75-10X7.50 HHGR8 ZY	1	40	39687	SOLENOID SOLID STATE SSC 10-100	1
19	18714PC	PIN WELDMENT LATCHING	1	41	37751	BOOT TERML SOLENOID SOLID TB-22-2	2
20	18715PC	STOP EXT EC2K	1	42	D0178	WASHER #10 SAE FLAT ZINC	4
21	0340	WASHER 0.25 FLAT	2	43	40364	SCREW #10-24X0.38 BTNHD SS	4
22	0479	CAP SCR 0.25-20X0.75 HHGR5	2				

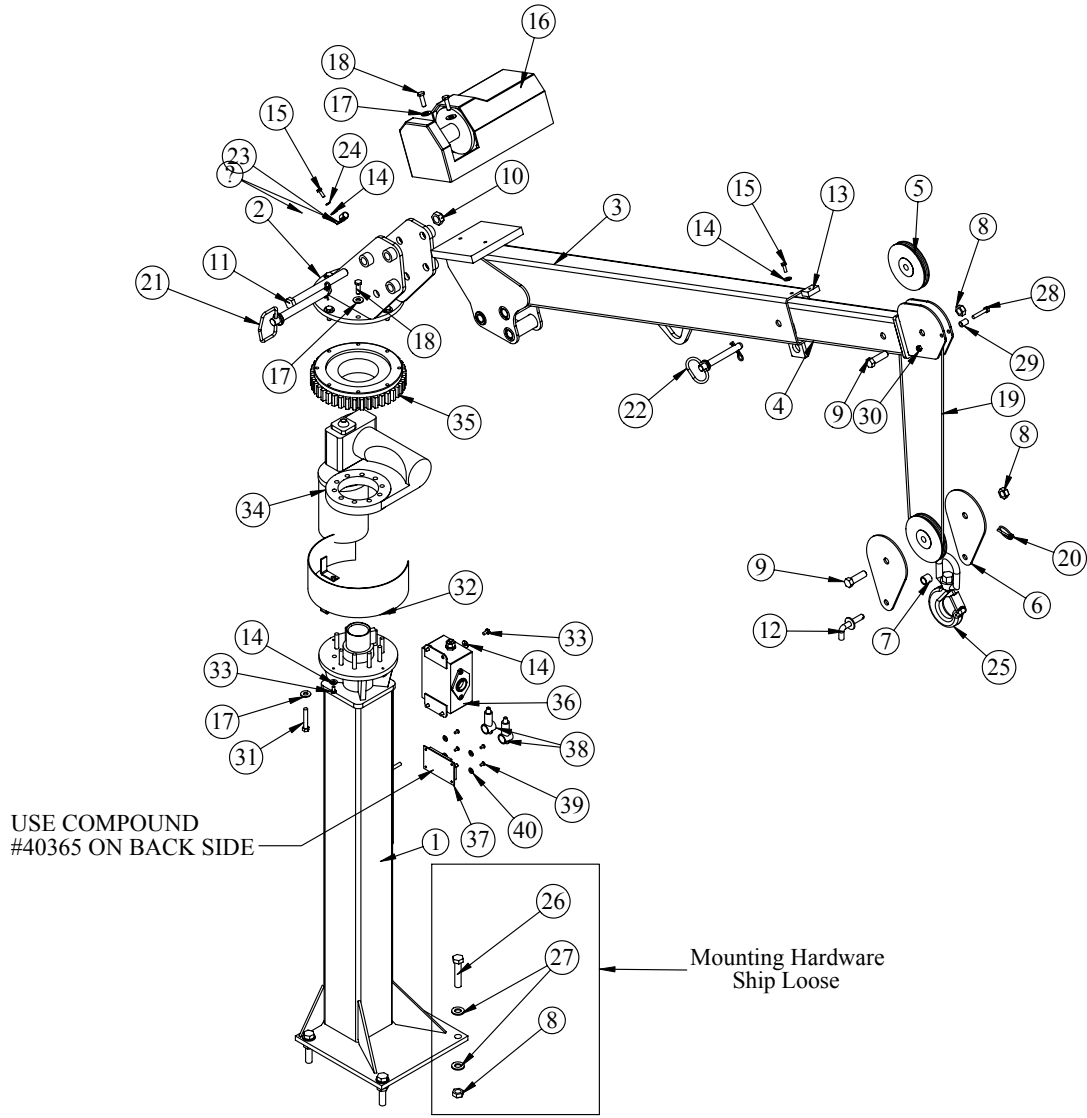
EC2000 Crane (Short Mast) - PN 19146



PN 19146

ITEM	PART	DESCRIPTION	QTY.	ITEM	PART	DESCRIPTION	QTY.
1	39703	BASE EC2K SHORT	1	23	18774	WINCH 1000 03002	1
2	17600PC	MAST EC2K	1	24	C6353	WASHER 0.38 FLAT GR8	2
3	39691	MAIN BOOM EC2K	1	25	13576	CAP SCR 0.38-16X1.25 HHGR8	2
4	39690	EXT BOOM EC2K	1	26	0346	WASHER 0.38 FLAT	1
5	18069	BEARING RADIAL BALL 6" BRB6217-2RS	1	27	0351	CAP SCR 0.38-16X1.00 HHGR5	1
6	18068	RACE INNER 2.50" TORIR-4016	1	28	18773	WIRE ROPE 3/16 7X19 GAC 40FT	1
7	18067	BEARING DRAWN CUP NEEDLE 2.75" TORB-4416	1	29	5753	PIN 0.19X1.56 LYNCH	1
8	18475PC	BRAKE WELDMENT EC2K	1	30	18778	PIN HITCH 0.75X6.25 W/ LANYARD	1
9	18483PC	HANDLE WELDMENT EC2K	1	31	18777	PIN HITCH 0.63X4.00 W/ LANYARD	1
10	18485	HANDLE GRIP EC2K	1	32	0487	CAP SCR 0.31-18X1.75 HHGR5	1
11	17222	SHEAVE EC2K 5.00 DIA .19R/.75 THK	2	33	0342	NUT 0.31-18 HH NYLOC	1
12	18711PC	PIPE 0.75 SCH40X2.38	1	34	19374PC	SPACER BOOM TIP EC2K	1
13	17965PC	PLATE EC2K SNATCH BLOCK	2	35	D1034	CAP SCR 0.63-11 X 3.00 HHGR8 ZY	4
14	18036PC	SPACER SNATCH BLOCK EC2K	1	36	C5902	WASHER 0.63 SAE FLAT YELLOW GR8	8
15	2826	NUT 0.63-11 HH NYLOC	6	37	C6018	HOOK CRANE-3 TON	1
16	0399	CAP SCR 0.63-11X2.00 HHGR5	2	38	C5946	HOSE CLAMP #8 RUBBER COATED	2
17	2828	NUT 0.75-10 HH NYLOC	1	39	0521	WASHER 0.25 LOCK	1
18	18712	CAP SCR 0.75-10X7.50 HHGR8 ZY	1	40	39687	SOLENOID SOLID STATE SSC 10-100	1
19	18714PC	PIN WELDMENT LATCHING	1	41	37751	BOOT TERML SOLENOID SOLID TB-22-2	2
20	18715PC	STOP EXT EC2K	1	42	40364	SCREW #10-24X0.38 BTNHD SS	4
21	0340	WASHER 0.25 FLAT	2	43	D0178	WASHER #10 SAE FLAT ZINC	4
22	0479	CAP SCR 0.25-20X0.75 HHGR5	2				

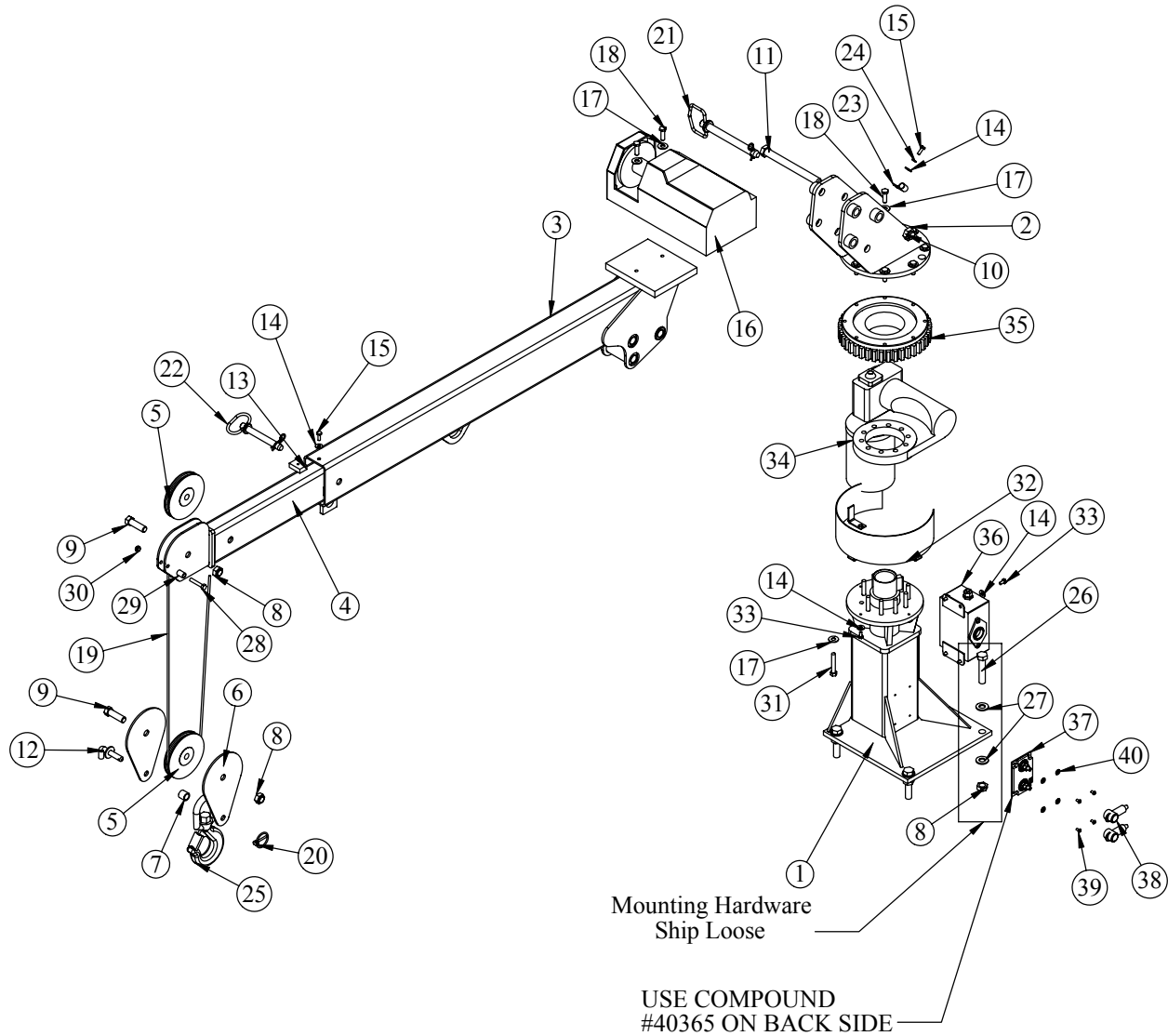
EC2000 Crane (Power Rotation) - PN 22601



PN 22601

ITEM	PART	DESCRIPTION	QTY.	ITEM	PART	DESCRIPTION	QTY.
1	39688	BASE EC2K POWER	1	22	18777	PIN HITCH 0.63X4.00 W LANYARD	1
2	22608PC	MAST EC2K POWER ROTATION	1	23	C0081	CLAMP 0.50 BLK VINYL	1
3	39691	MAIN BOOM EC2K	1	24	0521	WASHER 0.25 LOCK	1
4	39690	EXT BOOM EC2K	1	25	C6018	HOOK CRANE-3 TON	1
5	17222	SHEAVE EC2K 5.00 DIA .19R/.75 THK	2	26	D1034	CAP SCR 0.63-11 X 3.00 HHGR8 ZY	4
6	17965PC	PLATE EC2K SNATCH BLOCK	2	27	C5902	WASHER 0.63 SAE FLAT YELLOW GR8	8
7	18036PC	SPACER SNATCH BLOCK EC2K	1	28	0487	CAP SCR 0.31-18X1.75 HHGR5	1
8	2826	NUT 0.63-11 HH NYLOC	6	29	19374PC	SPACER BOOM TIP EC2K	1
9	0399	CAP SCR 0.63-11X2.00 HHGR5	2	30	0342	NUT 0.31-18 HH NYLOC	1
10	C0538	NUT 0.75-10 HHGR8 NYLOC	1	31	22924	CAP SCR 0.38-16X2.25 HHGR8	10
11	18712	CAP SCR 0.75-10X7.50 HHGR8 ZY	1	32	22616PC	GUARD TTB EC2K	1
12	18714PC	PIN WELDMENT LATCHING	1	33	0478	CAP SCR 0.25-20X0.50 HHGR5	7
13	18715PC	STOP EXT EC2K	1	34	22612	BEARING HOUSING SD14511S	1
14	0340	WASHER 0.25 FLAT	9	35	22613	BEARING GEAR SY7B0101N-10-B	1
15	0479	CAP SCR 0.25-20X0.75 HHGR5	2	36	22930PC	CONTROL KIT EC2K POWER	1
16	18774	WINCH 1000 03002	1	37	39687	SOLENOID SOLID STATE SSC 10-100	1
17	C6353	WASHER 0.38 FLAT GR8	20	38	37751	BOOT TERML SOLENOID SOLID TB-22-2	2
18	13576	CAP SCR 0.38-16X1.25 HHGR8	10	39	40364	SCREW #10-24X0.38 BTNHD SS	4
19	18773	WIRE ROPE 3/16 7X19 GAC 40FT	1	40	D0178	WASHER #10 SAE FLAT ZINC	4
20	5753	PIN 0.19X1.56 LYNCH	1				
21	18778	PIN HITCH 0.75X6.25 W LANYARD	1				

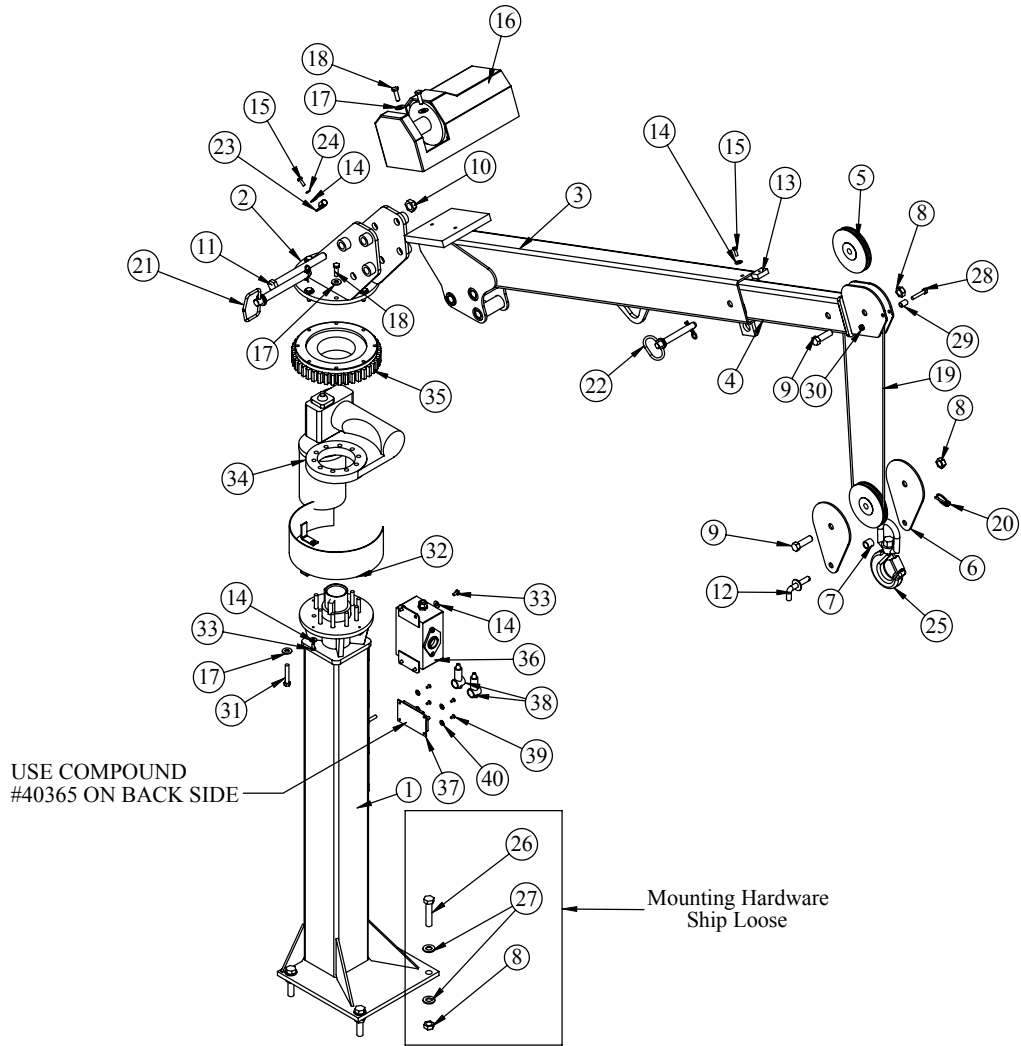
EC2000 Crane (Power Rotation Short) - PN 24906



PN 24906

ITEM	PART	DESCRIPTION	QTY.	ITEM	PART	DESCRIPTION	QTY.
1	39696	BASE EC2K POWER SHORT	1	20	C0538	NUT 0.75-10 HHGR8 NYLOC	1
	22608PC	MAST EC2K POWER ROTATION	1	21	C5946	HOSE CLAMP #8 RUBBER COATED	2
3	39691	MAIN BOOM EC2K	1	22	0521	WASHER 0.25 LOCK	1
4	39690	EXT BOOM EC2K	1	23	C6018	HOOK CRANE-3 TON	1
5	17222	SHEAVE EC2K 5.00 DIA .19R/.75 THK	2	24	D1034	CAP SCR 0.63-11 X 3.00 HHGR8 ZY	4
6	17965PC	PLATE EC2K SNATCH BLOCK	2	25	C5902	WASHER 0.63 SAE FLAT YELLOW GR8	8
7	18036PC	SPACER SNATCH BLOCK EC2K	1	26	0487	CAP SCR 0.31-18X1.75 HHGR5	1
8	2826	NUT 0.63-11 HH NYLOC	6	27	19374	SPACER BOOM TIP EC2K	1
9	0399	CAP SCR 0.63-11X2.00 HHGR5	2	28	22608	MAST EC2K POWER ROTATION	1
10	C0538	NUT 0.75-10 HHGR8 NYLOC	1	29	22616	GUARD TTB EC2K	1
11	18712	CAP SCR 0.75-10X7.50 HHGR8 ZY	1	30	0478	CAP SCR 0.25-20X0.50 HHGR5	7
12	18714PC	PIN WELDMENT LATCHING	1	31	22924	CAP SCR 0.38-16X2.25 HHGR8	10
13	18715PC	STOP EXT EC2K	1	32	22612	BEARING HOUSING SD14511S	1
14	0340	WASHER 0.25 FLAT	9	33	22613	BEARING GEAR SY7B0101N-10-B	1
15	0479	CAP SCR 0.25-20X0.75 HHGR5	2	34	24907	BASE SHORT EC2K POWER	1
16	18774	WINCH 1000 03002	1	35	22930	CONTROL KIT EC2K POWER	1
17	C6353	WASHER 0.38 FLAT GR8	20	36	0342	NUT 0.31-18 HH NYLOC	1
18	18778	PIN HITCH 0.75X6.25 W LANYARD	1				
19	18777	PIN HITCH 0.63X4.00 W LANYARD	1				

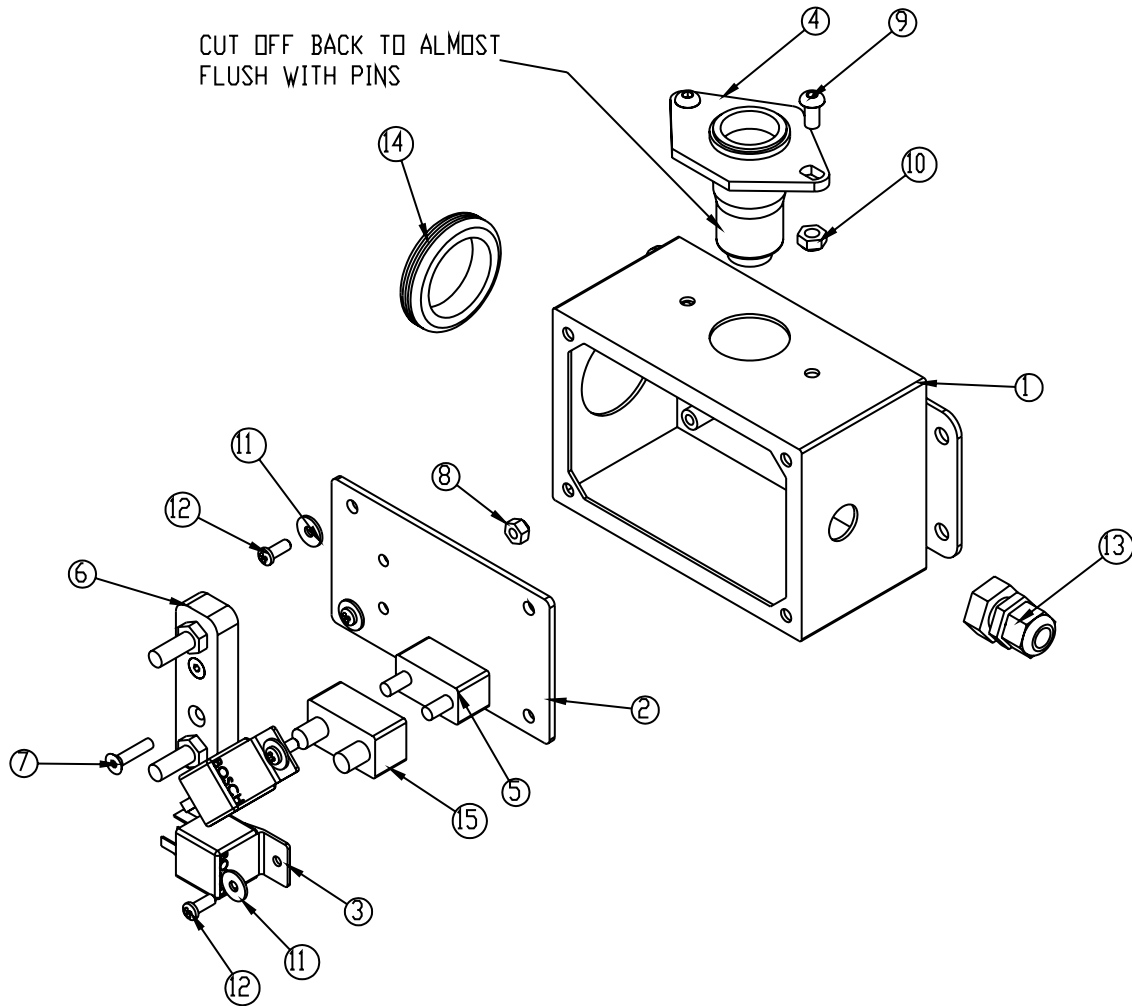
EC2000 Crane (LH Mount) - PN 56658



PN 56658

ITEM	PART	DESCRIPTION	QTY.	ITEM	PART	DESCRIPTION	QTY.
1	56659PC	BASE EC2K POWER LH MNT	1	21	18778	PIN HITCH 0.75X6.25 W\ LANYARD	1
2	22608PC	MAST EC2K POWER ROTATION	1	22	18777	PIN HITCH 0.63X4.00 W\ LANYARD	1
3	39691PC	MAIN BOOM EC2K	1	23	C0081	CLAMP 0.50 BLK VINYL	1
4	39690PC	EXT BOOM EC2K	1	24	0521	WASHER 0.25 LOCK	1
5	17222	SHEAVE EC2K 5.00 DIA .19R/.75 THK	2	25	C6018	HOOK CRANE-3 TON	1
6	17965PC	PLATE EC2K SNATCH BLOCK	2	26	D1034	CAP SCR 0.63-11 X 3.00 HHGR8 ZY	4
7	18036PC	SPACER SNATCH BLOCK EC2K	1	27	C5902	WASHER 0.63 SAE FLAT YELLOW GR8	8
8	2826	NUT 0.63-11 HH NYLOC	6	28	0487	CAP SCR 0.31-18X1.75 HHGR5	1
9	0399	CAP SCR 0.63-11X2.00 HHGR5	2	29	19374PC	SPACER BOOM TIP EC2K	1
10	C0538	NUT 0.75-10 HHGR8 NYLOC	1	30	0342	NUT 0.31-18 HH NYLOC	1
11	18712	CAP SCR 0.75-10X7.50 HHGR8 ZY	1	31	22924	CAP SCR 0.38-16X2.25 HHGR8	10
12	18714PC	PIN WELDMENT LATCHING	1	32	22616PC	GUARD TTB EC2K	1
13	18715PC	STOP EXT EC2K	1	33	0478	CAP SCR 0.25-20X0.50 HHGR5	7
14	0340	WASHER 0.25 FLAT	9	34	22612	BEARING HOUSING SD14511S	1
15	0479	CAP SCR 0.25-20X0.75 HHGR5	2	35	22613	BEARING GEAR SY7B0101N-10-B	1
16	18774	WINCH 1000 03002	1	36	22930	CONTROL KIT EC2K POWER	1
17	C6353	WASHER 0.38 FLAT GR8	20	37	39687	SOLENOID SOLID STATE SSC 10-100	1
18	13576	CAP SCR 0.38-16X1.25 HHGR8	10	38	37751	BOOT TERML SOLENOID SOLID TB-22-2	2
19	18773	WIRE ROPE 3/16 7X19 GAC 40FT	1	39	40364	SCREW #10-24X0.38 BTNHD SS	4
20	5753	PIN 0.19X1.56 LYNCH	1	40	D0178	WASHER #10 SAE FLAT ZINC	4

Control Kit Power Rotation - PN 22930



ITEM	PART	DESCRIPTION	QTY.	ITEM	PART	DESCRIPTION	QTY.
1	22925	ENCLOSURE 6.00X4.00 MACHINED	1	9	D0561	CAP SCR 0.25-20X0.50 BTNHD SS	2
2	22927	PLATE ELECTRICAL MTG EC2K	1	10	0333	NUT 0.25-20 HHGR5 NYLOC	2
3	C6072	RELAY BOSCH 20-30 AMP	2	11	D0178	WASHER #10 SAE FLAT ZINC	4
4	14994	CONNECTOR SOCKET TRAILER 6 PIN	1	12	6684	CAP SCR #10-32X0.50 SH	4
5	22931	CIRCUIT BREAKER 12V 20 AMP AUTO RES	1	13	12870	STRAIN RELIEF .38 NPT .08-.24 CABLE	1
6	23892	JUNCTION BLOCK 5/16" 2 POST	1	14	23893	GROMENT RUBBER 1.75	1
7	D0896	CAP SCR #10-24X0.75 FSH SS	2	15	23908	BOOT CIRCUIT BREAKER RED 23540	1
8	C4956	NUT #10-24 HH NYLOC SS	2				

Chapter 5 - Replacement Parts

ASSEMBLY COMPONENTS	
22612	BEARING HOUSING - ROTATION (POWER ROTATION MODELS)
22613	GEAR BEARING - ROTATION (POWER ROTATION MODELS)
18069	BEARING - RADIAL BALL 6.00"
18068	RACE - INNER 2.50"
18067	BEARING DRAWN CUP NEEDLE 2.75"
17222	SHEAVE 5.00" DIA.
18773	WIRE ROPE 40 FT (STANDARD MODELS)
33940	WIRE ROPE 50 FT
18483PC	HANDLE WELDMENT EC2K
18485	HANDLE GRIP EC2K
18715PC	STOP - EXTENSION WELDMENT
18777	HITCH PIN 0.63"X 4.00" W / LANYARD
18778	HITCH PIN 0.75"X 6.25" W / LANYARD
18714PC	PIN WELDMENT - LATCHING
5753	PIN - LYNCH 0.19"X1.56"
C6018	HOOK 3-TON
10709	SAFETY LATCH FOR 3 TON HOOK
ELECTRICAL COMPONENTS	
22932	HANDLE ASM 2 FUNCTION EC2K (POWER ROTATION MODELS)
22620	HANDLE ASM - WINCH FUNCTION ONLY (MANUAL ROTATION)
18774	WINCH
39836	COVER - PLASTIC (WINCH)
39687	SOLENOID - SOLID STATE SSC 10-100
37751	BOOT - SOLID STATE SOLENOID TERMINALS
28834	WIRE HARNESS (POWER ROTATION MODELS)
C6072	BOSCH RELAY (POWER ROTATION MODELS)
22931	CIRCUIT BREAKER (POWER ROTATION MODELS)
23908	BOOT - CIRCUIT BREAKER RED (POWER ROTATION MODELS)
14994	CONNECTOR SOCKET - TRAILER 6 PIN (POWER ROTATION MODELS)
23892	JUNCTION BLOCK 5/16" 2 POST (POWER ROTATION MODELS)

Warranty Information