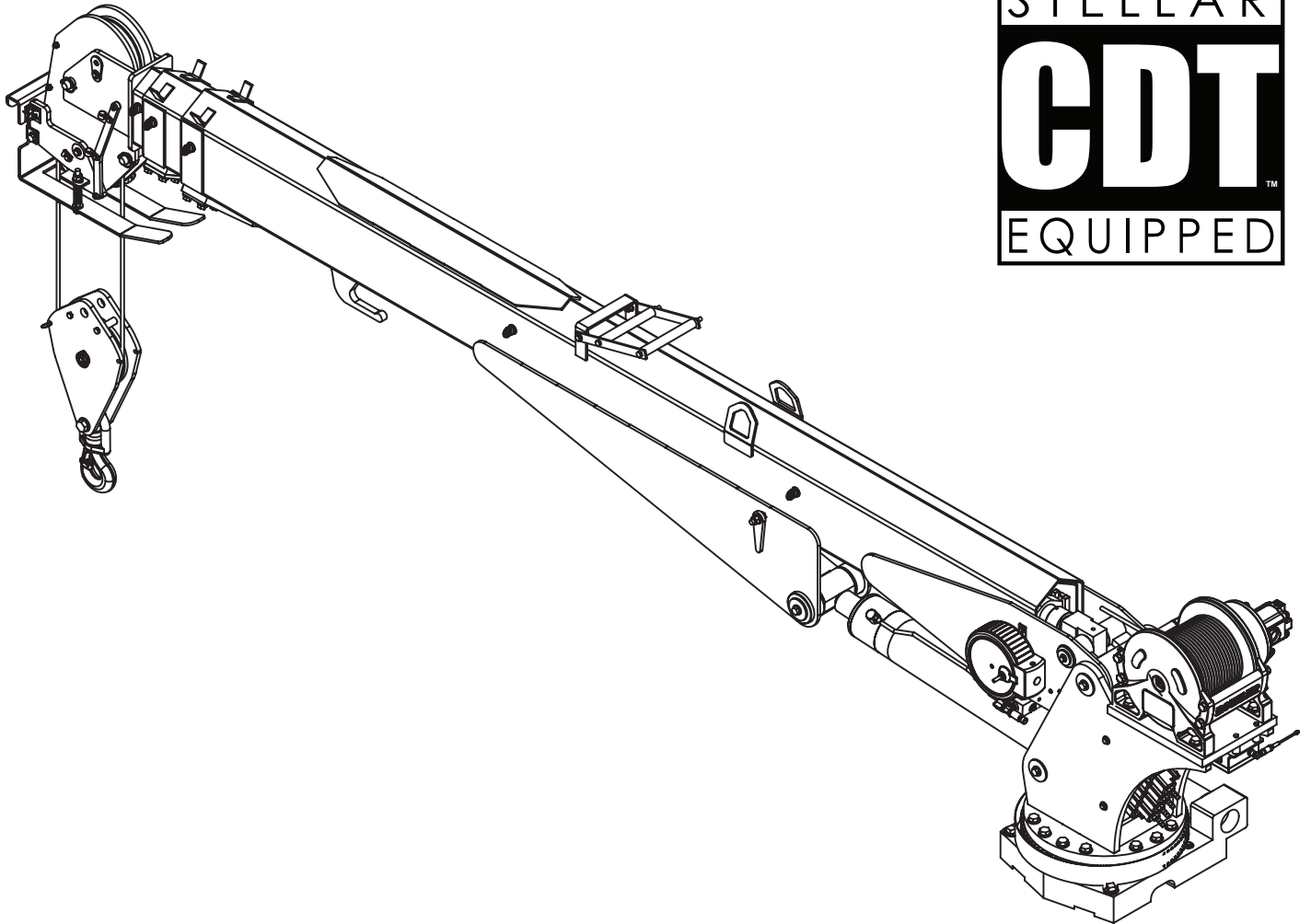




Model 7630 Telescopic Crane Owner's Manual

Installation • Assembly Drawings • Parts



Notice: A copy of this manual must remain with the equipment at all times.
For a printable download copy, please visit: www.stellarindustries.com

Stellar Industries, Inc.
190 State Street
PO Box 169
Garner, IA 50438
800-321-3741
Fax: 641-923-2811

www.stellarindustries.com

Subject to Change without Notification.
© 2014 Stellar Industries, Inc.

Last Revision: 12/18/14

Model 7630 Manual Revisions

| Date of Revision | Section Revised | Description of Revision |
|------------------|-----------------|-------------------------|
| | | |
| | | |
| | | |
| | | |
| | | |
| | | |
| | | |
| | | |
| | | |
| | | |
| | | |
| | | |
| | | |
| | | |
| | | |
| | | |
| | | |
| | | |
| | | |
| | | |
| | | |
| | | |
| | | |

Table of Contents

| | |
|---|-----------|
| Introduction | iv |
| Chapter 1 - Specifications | 1 |
| Model 7630 Specifications | 1 |
| Capacity Chart - Decal PN 71794 | 2 |
| Dimensional Drawing 1 | 3 |
| Dimensional Drawing 2..... | 4 |
| Chapter 2 - Installation | 5 |
| General Installation..... | 5 |
| Installer Notice | 5 |
| Torque Data Chart | 6 |
| Installation Overview | 7 |
| Control Kit - PN 72785 | 8 |
| Control Kit (Non-Boost) - PN 73246 | 9 |
| Hydraulic Kit - PN 72758 | 10 |
| Valve Bank - PN 52265 | 11 |
| Hydraulic Installation..... | 12 |
| Winch Case Drain Installation..... | 13 |
| Hydraulic System | 14 |
| Face Seal/O-Ring Size Chart | 15 |
| Stability Procedure | 16 |
| Decal Placement - PN 71792..... | 18 |
| Chapter 3 - Assembly Drawings | 19 |
| Base Assembly - PN 50364..... | 19 |
| Mast Assembly - PN 72793..... | 20 |
| Main Boom Assembly - PN 72794 | 21 |
| Extension Boom Assembly - PN 71599 | 22 |
| Main Cylinder Assembly - PN 72756 | 23 |
| Extension Cylinder Assembly - PN 72463..... | 24 |
| Cable & Hook Assembly - PN 56266 | 25 |
| CDT™ Radio Transmitter Assembly - PN 56647..... | 26 |

Introduction

A copy of this manual is provided with every crane and can be found in the hard plastic manual case that is installed on the chassis. A copy of this manual shall remain with the crane at all times.

Throughout the manual, three signal words will be used to bring attention to important items:

NOTICE

A NOTICE signal word indicates a practice not related to physical injury.

⚠ WARNING

A WARNING signal word indicates a hazardous situation which, if not avoided, could result in death or serious injury.

⚠ DANGER

A DANGER signal word indicates a hazardous situation which, if not avoided, will result in death or serious injury.

Information contained within this manual does not cover operation, maintenance, or troubleshooting. Please refer to the General Light Duty Crane Manual for details on these items.

This manual is not binding. Stellar Industries, Inc. reserves the right to change, at any time, any or all of the items, components, and parts deemed necessary for product improvement or commercial/production purposes. This right is kept with no requirement or obligation for immediate mandatory updating of this manual.

In closing:

If more information is required or technical assistance is needed, or if you feel that any part of this manual is unclear or incorrect, please contact the Stellar Customer Service Department by phone at 800-321-3741 or email at service@stellarindustries.com.

**For Technical Questions, Information, Parts, or Warranty, Call Toll-Free at
800-321-3741**

Hours: Monday - Friday, 8:00 a.m. - 5:00 p.m. CST

Or email at the following addresses:

Technical Questions, and Information

service@stellarindustries.com

Order Parts

parts@stellarindustries.com

Warranty Information

warranty@stellarindustries.com

Chapter 1 - Specifications

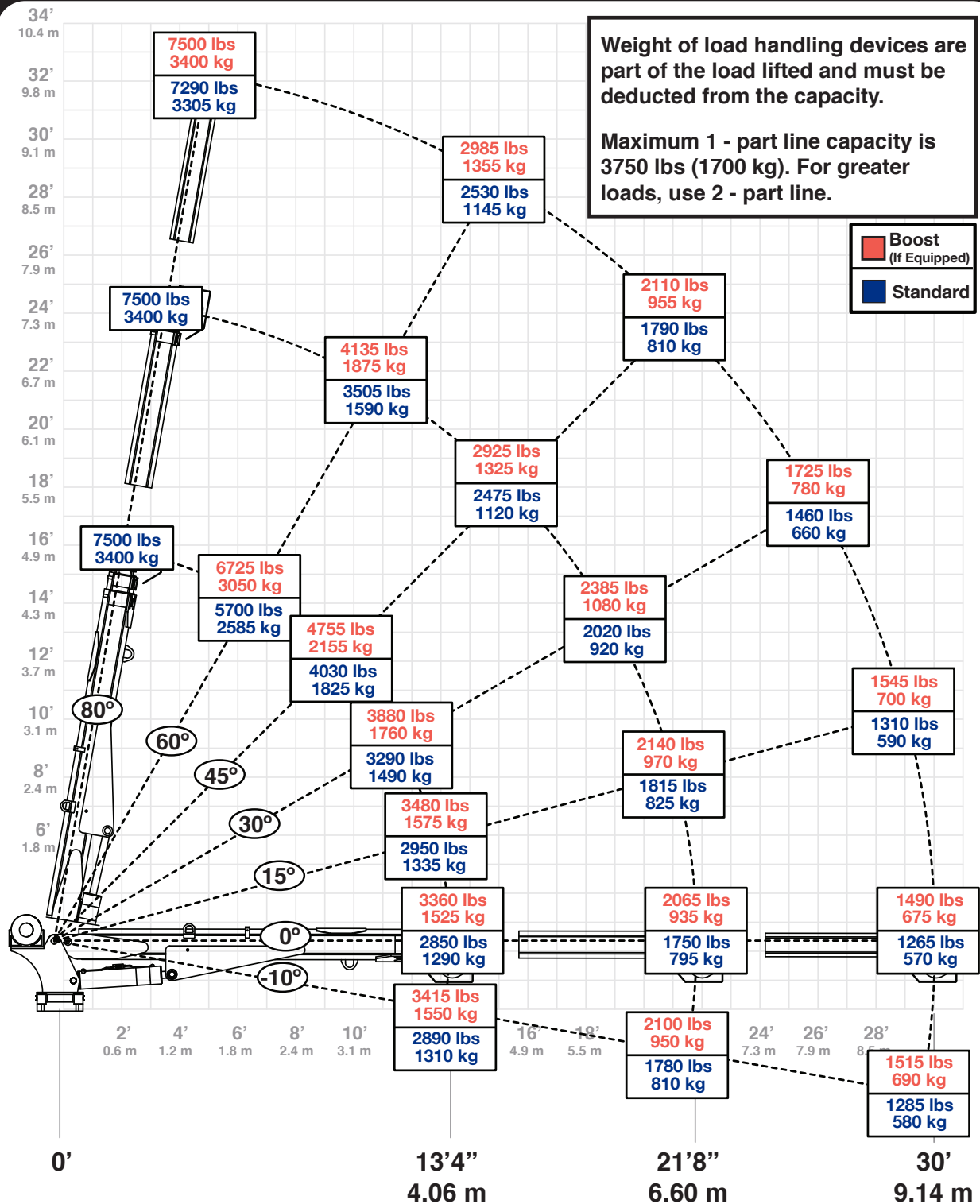
Model 7630 Specifications

| | | |
|-----------------------------|--|---|
| Crane Rating*: | 44,840 ft-lbs (6.2 TM) | |
| Standard Boom Length: | 13' 4" (4.06 m) from CL of Crane | |
| Boom Extension: | 1st Stage: Hydraulic 100" (254 cm) 2nd Stage: Hydraulic 100" (254 cm) | |
| Maximum Horizontal Reach: | 30' (9.14 m) from CL of Crane | |
| Maximum Vertical Lift: | 31' 9" (9.68 m) from Crane Base | |
| Stowed Height (Crane Only): | 37.75" (95.5 cm) | |
| Required Mounting Space: | 20" x 21" (50.8 cm x 53.3 cm) | |
| Approximate Crane Weight: | 7630 Standard | 2,050 lbs (930 kg) |
| Controls: | Radio control standard for all functions. | |
| Wire Rope: | 3/8" (0.95 cm) 6X31 IWRC-DGXIP X 120' (36.58 m) | |
| Boom Elevation: | -10° to +80° | |
| Winch Specifications | | |
| Line Pull Speed: | 60 ft/min (18.29 m/min) | |
| Max. Single Part Line: | 3,750 lbs (1,700 kg) | |
| Max. Double Part Line: | 7,500 lbs (3,400 kg) | |
| Rotation (Worm Gear): | 400° Power | |
| Lifting Capacity**: | 7,500 lbs @ 5'10" (3,400 kg @ 1.78 m) 1,490 lbs @ 30' (675 kg @ 9.14 m) | |
| Power Supply: | PTO & Pump: | 8 gpm @ 3,000 psi (30.3 lpm @ 207 bar) |

*Crane rating in Boost Mode. Normal crane rating is 38,000 ft-lbs (5.25 TM).

**Maximum capacities in Boost Mode.

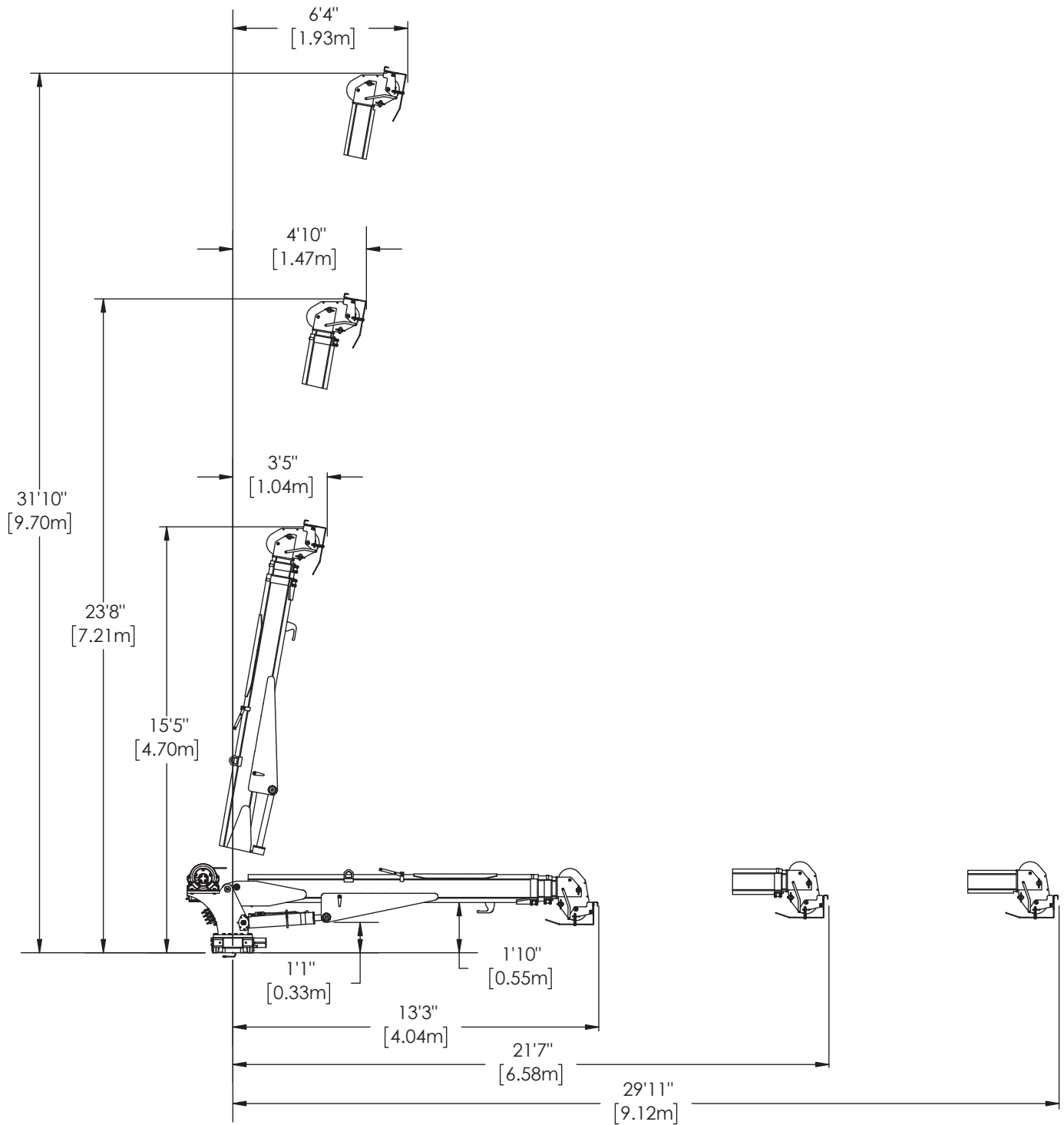
Capacity Chart - Decal PN 71794



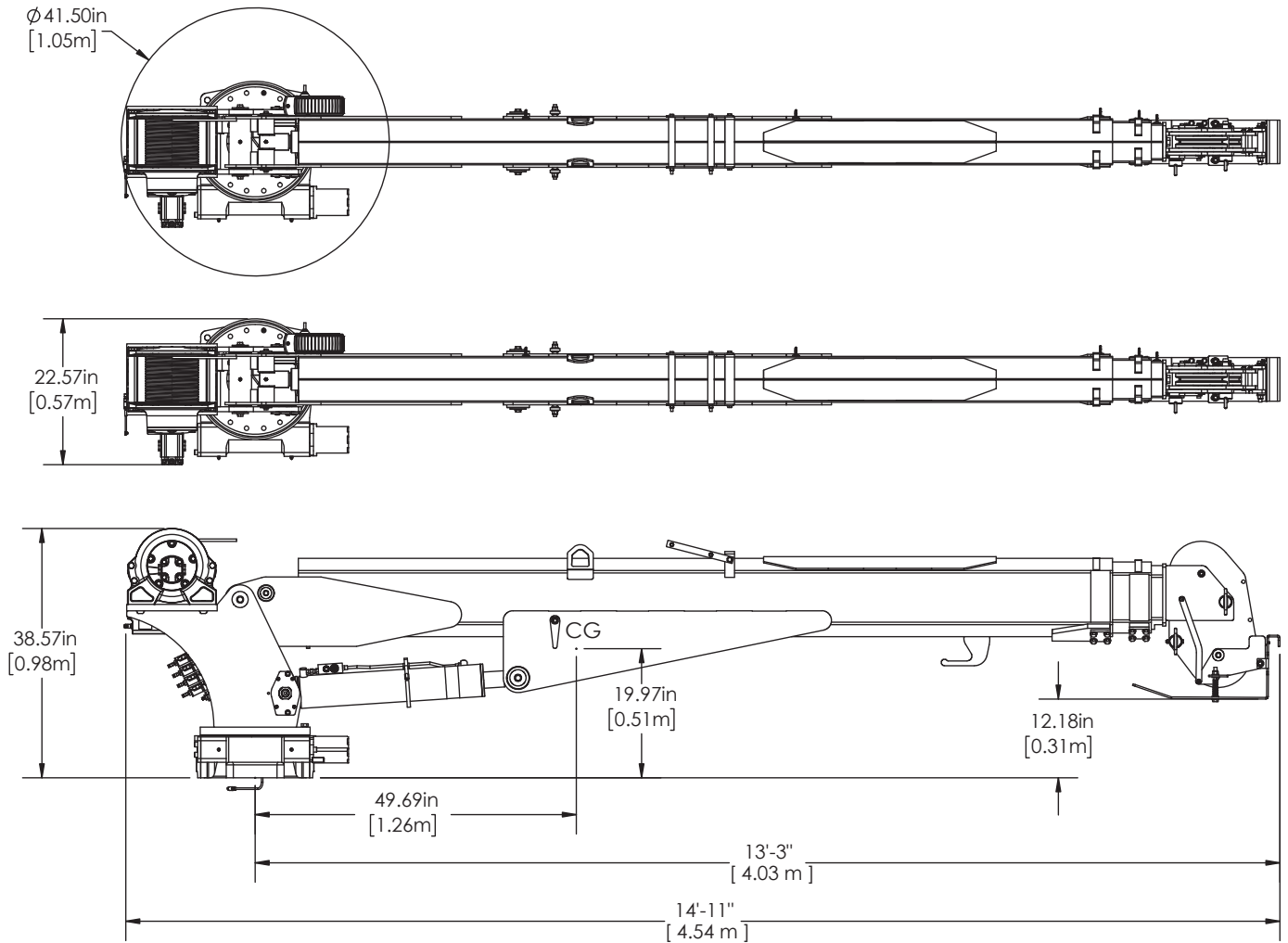
7630

PN 71794 - Rev A

Dimensional Drawing 1



Dimensional Drawing 2



Chapter 2 - Installation

General Installation

This chapter is designed to serve as a general guide for the installation of a Stellar 7630 Crane on a Stellar Service Body. Each installation is considered unique so certain portions of this chapter may or may not apply to your direct application. If a question should arise during the installation process, please contact Stellar Customer Service at (800) 321 3741.

This crane is designed for use with a Stellar Service Body installed on a vehicle that meets the minimum chassis requirements of the crane. It is the installer's responsibility to assure that the crane is mounted on a platform that will support the maximum crane rating of this crane.

⚠ WARNING Do not install this crane on a body not capable of handling the loads imposed on it. Failure to do so may result in serious injury or death.

NOTICE When installing welder units to the service bodies, it is highly recommended that a surge protector is installed on the chassis batteries to protect the crane radio receiver, wiring and other electronic devices from an unexpected electrical spike or surge. Failure to do so could result in extensive damage to the service body and crane electrical circuit.

Installer Notice

According to Federal Law (49 cfr part 571), each final-stage manufacturer shall complete the vehicle in such a manner that it conforms to the standards in effect on the date of manufacture of the incomplete vehicle, the date of final completion, or a date between those two dates. This requirement shall, however, be superseded by any conflicting provisions of a standard that applies by its terms to vehicles manufactured in two or more stages.

Therefore, the installer of Stellar® Cranes and Bodies is considered one of the manufacturers of the vehicle. As such a manufacturer, the installer is responsible for compliance with all applicable federal and state regulations. They are required to certify that the vehicle is in compliance with the Federal Motor Vehicle Safety Standards and other regulations issued under the National Traffic and Motor Vehicle Safety Act.

Please reference the Code of Federal Regulations, title 49 - Transportation, Volume 5 (400-999), for further information, or visit <http://www.gpoaccess.gov/nara/index.html> for the full text of Code of Federal Regulations.

Torque Data Chart

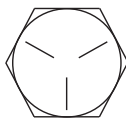
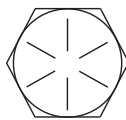
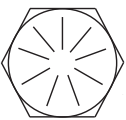
When using the torque data in the chart, the following rules should be observed:

- Bolt manufacturer's particular specifications should be consulted when provided.

- Flat washers of equal strength must be used.

- All torque measurements are given in foot-pounds. To convert to inch-pounds, multiply by 12.

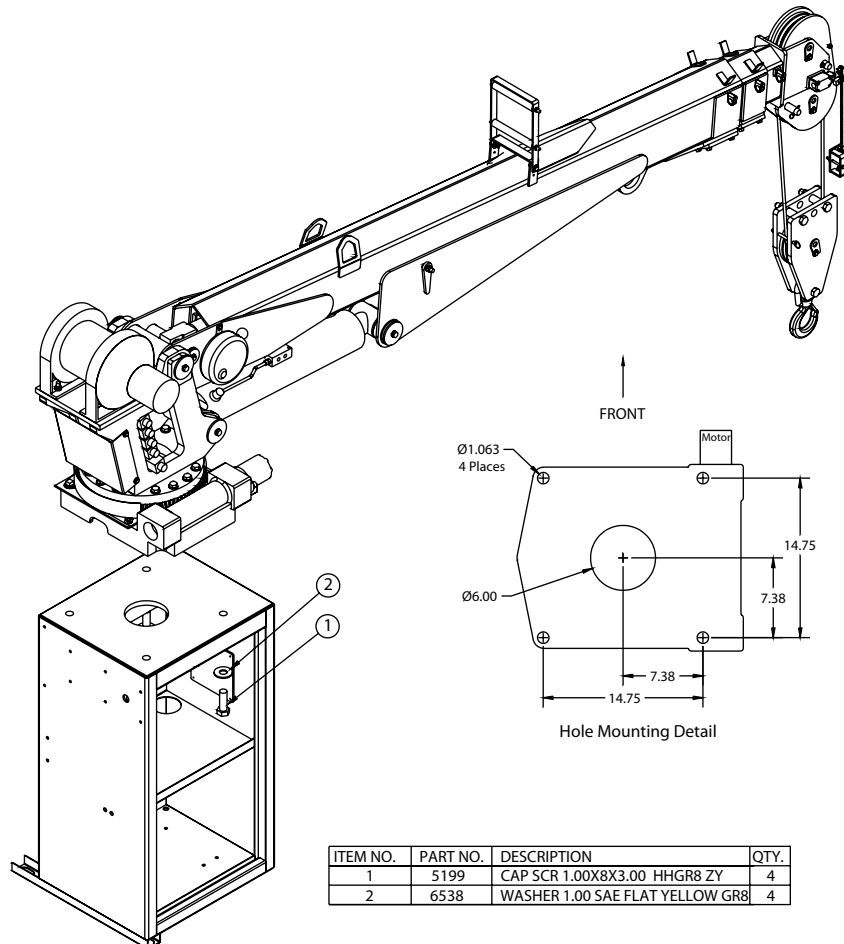
- Torque values specified are for bolts with residual oils or no special lubricants applied. If special lubricants of high stress ability, such as Never-Seez compound graphite and oil, molybdenum disulphite, colloidal copper or white lead are applied, multiply the torque values in the charts by the factor .90. The use of Loctite does not affect the torque values listed above.

| | | GRADE 5 | | GRADE 8 | | GRADE 9 |
|----------------|-------------------|--|----------------|---|----------------|---|
| | |  | |  | |  |
| Size (DIA-TPI) | Bolt DIA (Inches) | Plain (Ft-Lb) | Plated (Ft-Lb) | Plain (Ft-Lb) | Plated (Ft-Lb) | Plated (Ft-Lb) |
| 5/16-18 | 0.3125 | 17 | 13 | 25 | 18 | 22 |
| 3/8-16 | 0.3750 | 31 | 23 | 44 | 33 | 39 |
| 7/16-14 | 0.4375 | 49 | 37 | 70 | 52 | 63 |
| 1/2-13 | 0.5000 | 75 | 57 | 105 | 80 | 96 |
| 9/16-12 | 0.5625 | 110 | 82 | 155 | 115 | 139 |
| 5/8-11 | 0.6250 | 150 | 115 | 220 | 160 | 192 |
| 3/4-10 | 0.7500 | 265 | 200 | 375 | 280 | 340 |
| 7/8-9 | 0.8750 | 395 | 295 | 605 | 455 | 549 |
| 1-8 | 1.000 | 590 | 445 | 910 | 680 | 823 |
| 1 1/8-7 | 1.1250 | 795 | 595 | 1290 | 965 | 1167 |
| 1 1/4-7 | 1.2500 | 1120 | 840 | 1815 | 1360 | 1646 |
| 1 3/8-6 | 1.3750 | 1470 | 1100 | 2380 | 1780 | 2158 |
| 1 1/2-6 | 1.500 | 1950 | 1460 | 3160 | 2370 | 2865 |

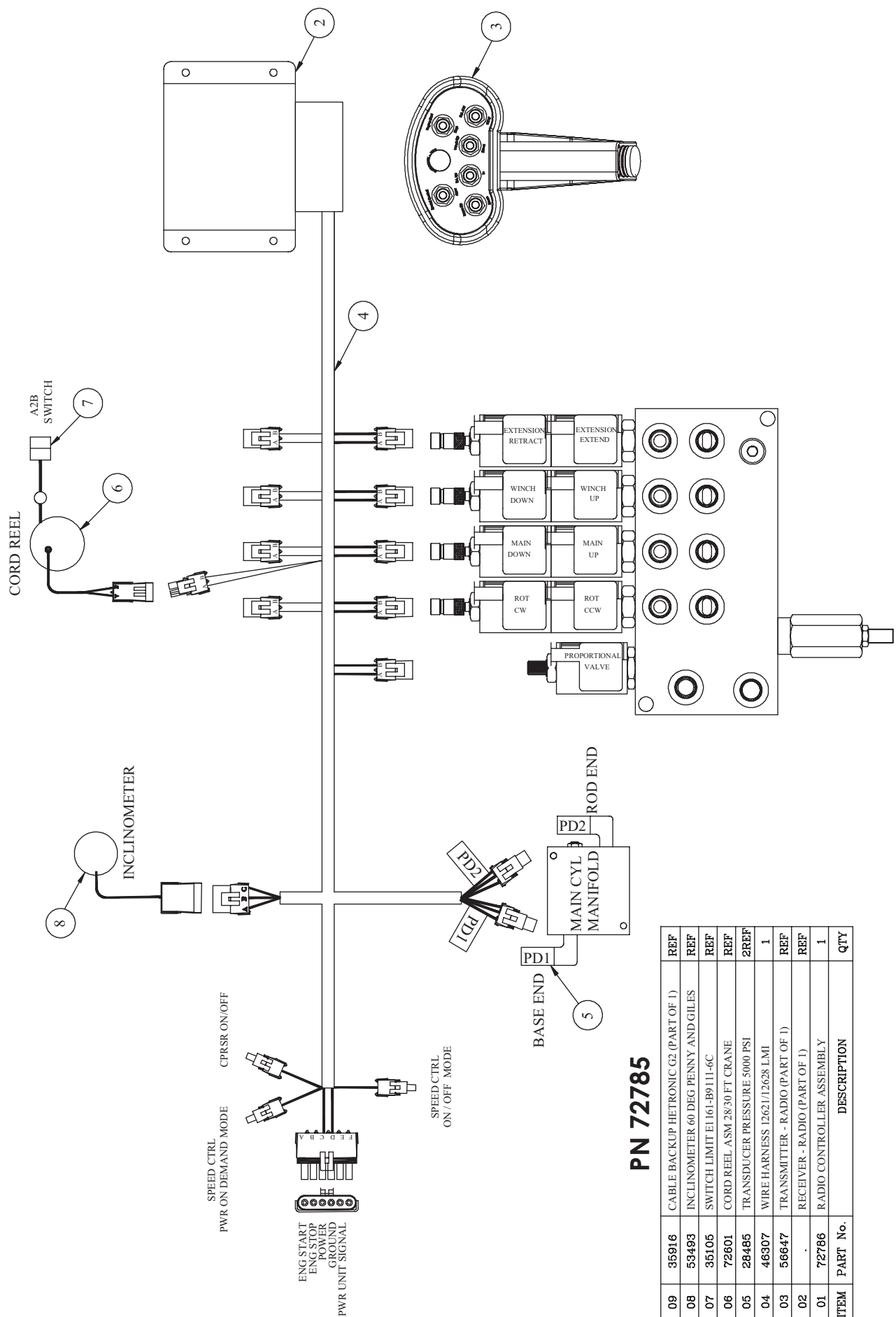
- Torque values for socket-head capscrews are the same as for Grade 8 capscrews.
- Do not use these values if a different torque value or tightening procedure is given for a specific application. Torque values listed are for general use only. Check tightness of fasteners periodically.
- Shear bolts are designed to fail under predetermined loads. Always replace shear bolts with identical grade.
- Fasteners should be replaced with the same or higher grade. If higher grade fasteners are used, these should only be tightened to the strength of the original.
- Tighten plastic insert or crimped steel-type lock nuts to approximately 110 percent of the dry torque values shown in the chart below, applied to the nut, not to the bolt head. Tighten toothed or serrated-type lock nuts to the full torque value. *Note: "Lubricated" means coated with a lubricant such as engine oil, or fasteners with phosphate and oil coatings. "Dry" means plain or zinc plated without lubrication. Tighten lubricated bolts to approximately 80% of dry bolts.*

Installation Overview

1. Determine that the mounting location for the 7630 is at least 18" x 20" (45.7 x 50.8 cm).
2. Use the detail below to drill 1.06" diameter holes into the mounting plate. Run tap on the threads of the base to be sure they are clean.
3. Use a crane or lifting device capable of lifting the weight of the Stellar® Crane. The 7630 weighs approximately 2,050 lbs (930 kg). **Note: Cranes are shipped with rotation positioned at 200 degrees of 400 degree system.** This will allow for easy installation of the crane and permanent connection of all hydraulic and electrical components prior to repositioning into the crane saddle.
4. Connect straps or chain from the lifting device to the lifting rings on the 7630.
5. Use four (4) 1" x 3" #8 bolts and four (4) #8 flat washers.
6. Install a washer on each bolt.
7. Apply Loctite Thread locker #277 to the bolts.
8. Using the lifting device, lower the 7630 just above the crane compartment and start the bolts. Have someone assist in leveling the crane. **Note: the rotation motor should be to the door side of crane compartment and the boom should be extended back over the rear bumper.**
9. Secure the crane using the mounting hardware provided. **Note: longer or shorter cap screws may be required – recommended thread engagement into crane base is 1.75" – use grade 8, zinc plated cap screws only.**
10. Torque the cap screws to 680 ft-lbs.
11. Remove supporting crane.
12. Hook-up hydraulics and electrical.



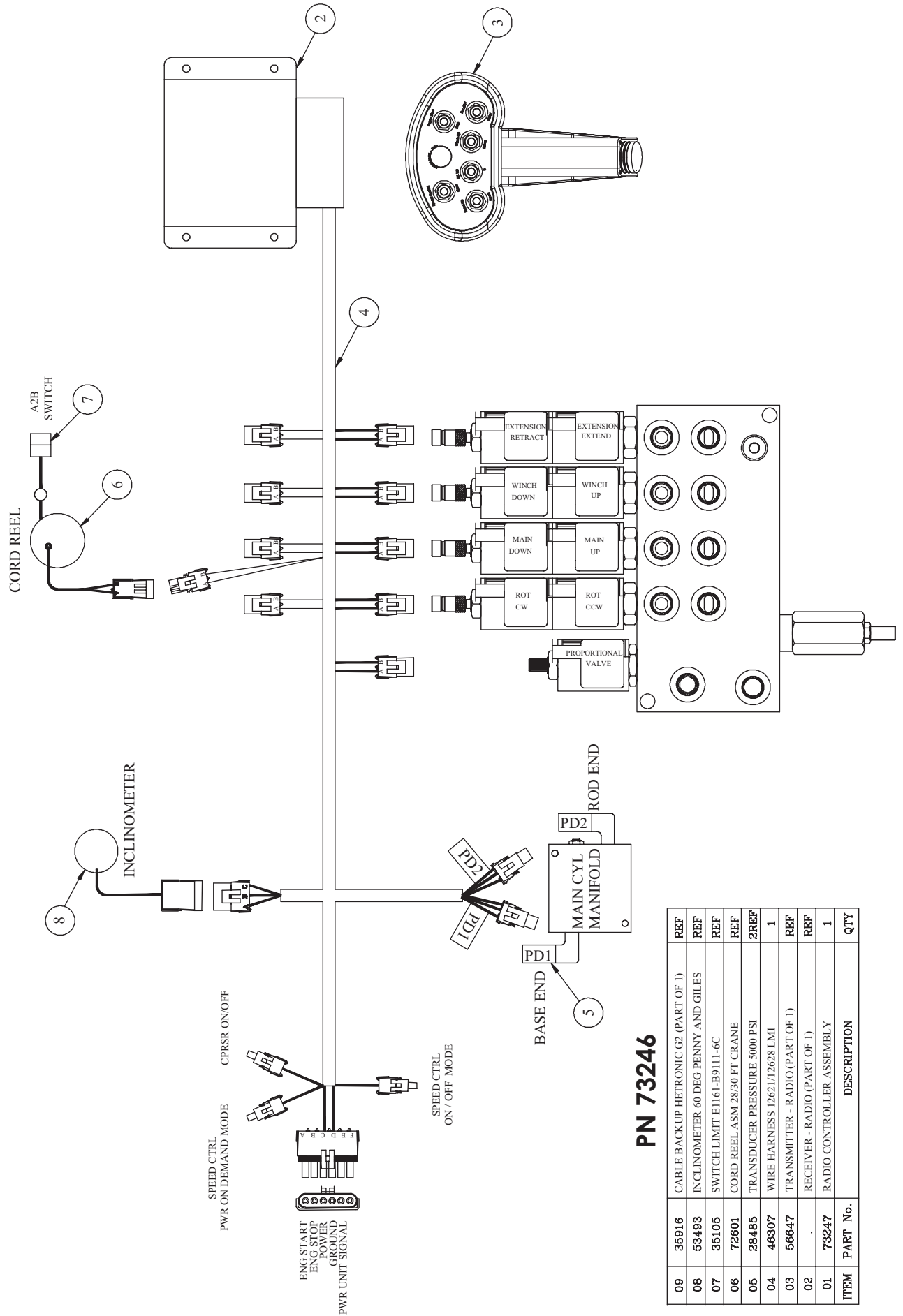
Control Kit - PN 72785



PN 72785

| ITEM | PART No. | DESCRIPTION | QTY |
|------|----------|--------------------------------------|------|
| 09 | 35916 | CABLE BACKUP HETRONIC G2 (PART OF 1) | REF |
| 08 | 53493 | INCLINOMETER 60 DEG PENNY AND GILES | REF |
| 07 | 35105 | SWITCH LIMIT EI 161-B9111-6C | REF |
| 06 | 72801 | CORD REEL ASM 28'30 FT CRANE | REF |
| 05 | 28485 | TRANSDUCER PRESSURE 5000 PSI | 2REF |
| 04 | 46307 | WIRE HARNESS 12621/12628 LMI | 1 |
| 03 | 56647 | TRANSMITTER - RADIO (PART OF 1) | REF |
| 02 | . | RECEIVER - RADIO (PART OF 1) | REF |
| 01 | 72786 | RADIO CONTROLLER ASSEMBLY | 1 |
| | | | |
| | | | |
| ITEM | PART No. | DESCRIPTION | QTY |

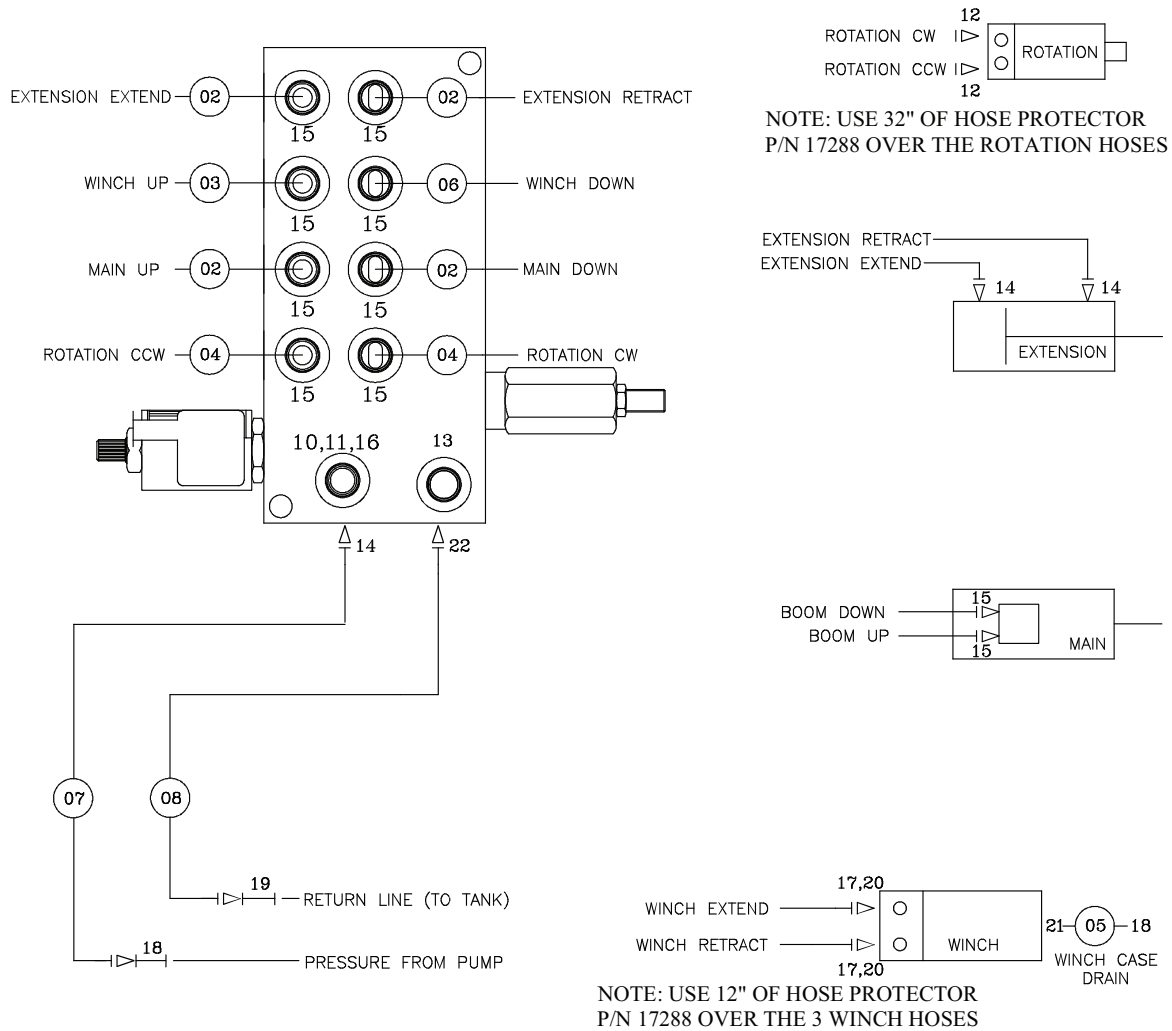
Control Kit (Non-Boost) - PN 73246



PN 73246

| ITEM | PART No. | DESCRIPTION | QTY |
|------|----------|--------------------------------------|------|
| 09 | 35916 | CABLE BACKUP HETRONIC G2 (PART OF 1) | REF |
| 08 | 53493 | INCLINOMETER 60 DEG PENNY AND GILES | REF |
| 07 | 35105 | SWITCH LIMIT E1161-B9111-6C | REF |
| 06 | 72601 | CORD REEL ASM 28'30 FT CRANE | REF |
| 05 | 28465 | TRANSDUCER PRESSURE 5000 PSI | 2REF |
| 04 | 46307 | WIRE HARNESS I2621/12628 LMI | 1 |
| 03 | 56647 | TRANSMITTER - RADIO (PART OF 1) | REF |
| 02 | . | RECEIVER - RADIO (PART OF 1) | REF |
| 01 | 73247 | RADIO CONTROLLER ASSEMBLY | 1 |

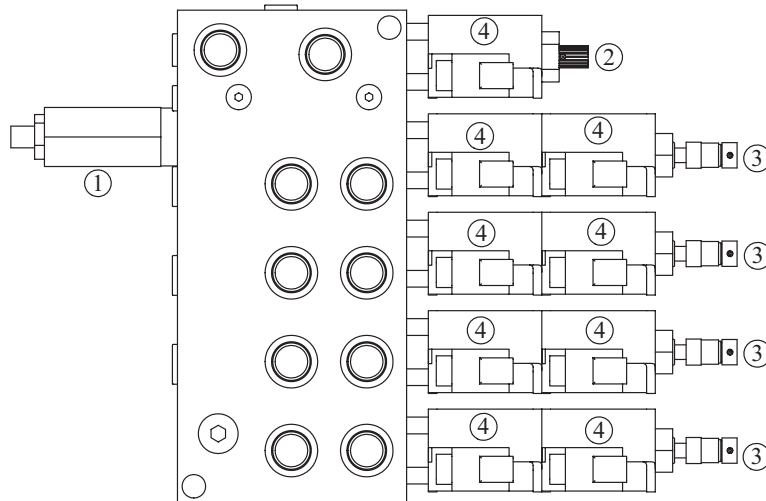
Hydraulic Kit - PN 72758



PN 72758

| | | | |
|------|----------|-------------------------------------|------|
| 23 | | | |
| 22 | C1175 | FTG 8-8 MFS-MAORB 45 | 1 |
| 21 | C4929 | FTG 6-4 MFS-MORB STRAIGHT | 1 |
| 20 | C5547 | FTG 6-8 MFS-MOARB 90 | 2 |
| 19 | 12172 | FTG 8-8 MFS-MFS SWIVEL STRAIGHT | 1 |
| 18 | 12171 | FTG 6-6 MFS-MFS SWIVEL STRAIGHT | 2 |
| 17 | D0549 | FTG 16-8 MORB-FORB STRAIGHT REDUCER | 2 |
| 16 | 39780 | GAUGE OIL LF 2.5 0-5000 CBM SAE | 1 |
| 15 | 0279 | FTG 6-6 MFS-MORB STRAIGHT | 10 |
| 14 | D1193 | FTG 6-6 MFS-MAORB 45 | 3 |
| 13 | C4961 | FTG 6 MORB PLUG HOLLOW HEX | 1 |
| 12 | D1302 | FTG 6-10 MFS-MAORB 90 | 2 |
| 11 | 3861 | FTG 6-6 MAORB-FORB 90 | 1 |
| 10 | 15111 | FTG 6-4 MORB-FORB STRAIGHT REDUCER | 1 |
| 09 | 17288 | HOSE PROTECTOR 1.00 AS-B-27 | 44" |
| 08 | 45438 | HOSE-HYD .50 X 8 | 1ref |
| 07 | 45439 | HOSE-HYD .38 X 9 | 1ref |
| 06 | 52276 | HOSE-HYD .38 X 25 | 1ref |
| 05 | 52486 | HOSE-HYD .38 X 36 | 1ref |
| 04 | 71903 | HOSE-HYD .38 X 39 | 2ref |
| 03 | 13029 | HOSE-HYD .38 X 22.50 | 1ref |
| 02 | 13028 | HOSE-HYD .38 X 17 | 4ref |
| 01 | 71901 | HOSE KIT 76/96/106/126 (incl:2-8) | 1 |
| ITEM | PART No. | DESCRIPTION | QTY |

Valve Bank - PN 52265

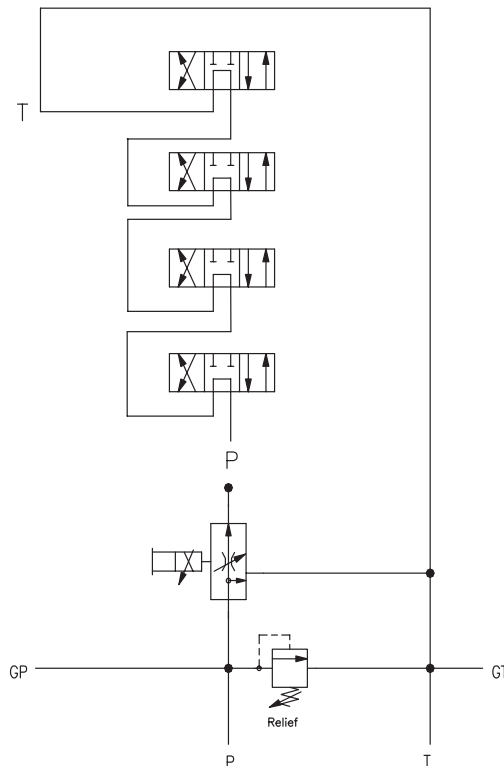


PN 52265

| ITEM | PART | DESCRIPTION | QTY |
|------|-------|-------------------------------------|-----|
| 1 | 25367 | RELIEF VALVE 24685/24690 | 1 |
| | 25368 | SEAL KIT 25367 | |
| 2 | 24960 | VALVE FLW CTRL PRP/JP04C3150N 0-8 | 1 |
| | 25369 | SEAL KIT 24960/25381 | |
| 3 | 25371 | VALVE SOLND 3 POS 4 WAY TAND G04571 | 4 |
| | 25373 | SEAL KIT 25371/25372 | |
| 4 | 44532 | COIL 12VDC DUETSCH CAP012H | 9 |

NOTE: PN's 24960 & 25371 DO NOT INCLUDE COIL PN 44532

HYDRAULIC SCHEMATIC

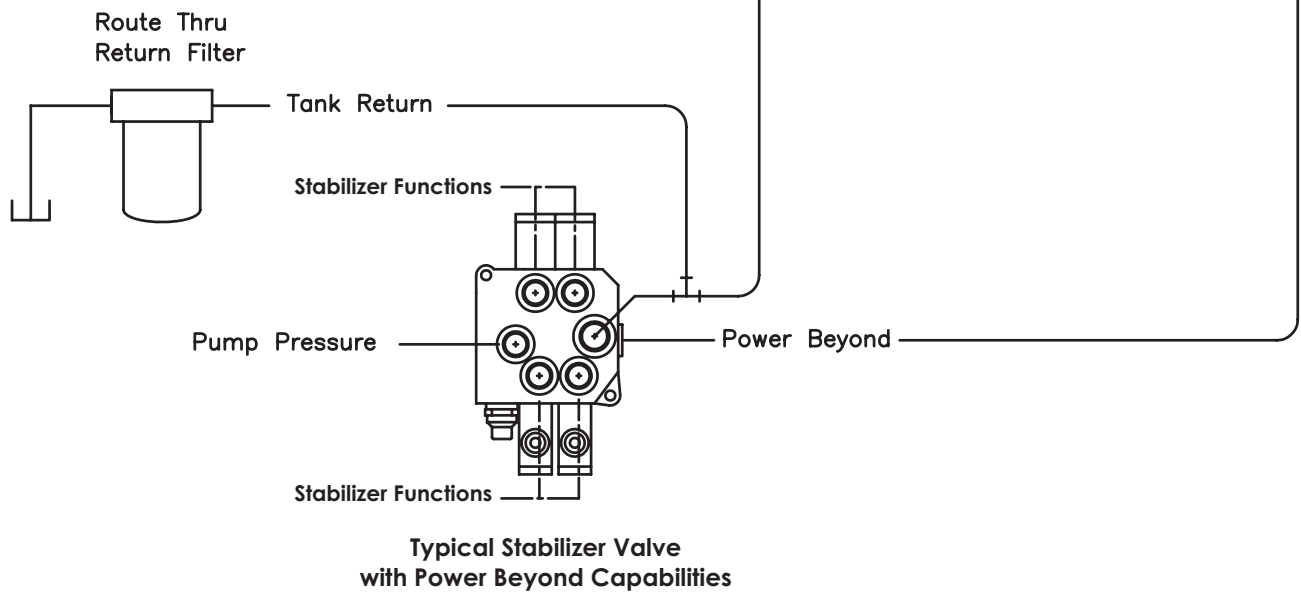
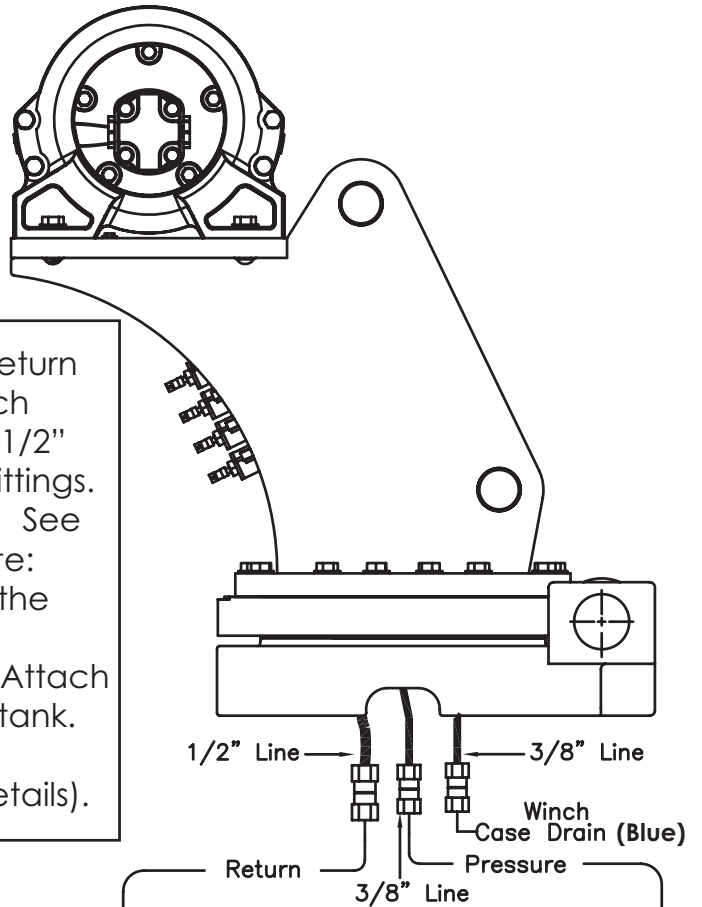


Hydraulic Installation

WARNING

Follow the instructions presented on this page. Failure to follow these instructions may result in death or serious injury.

1. After mounting, locate the pressure and return lines. Note: Pressure line is 3/8" hose; Winch Case Drain Line is 3/8" hose; Return line is 1/2" hose. Hoses are terminated using swivel fittings.
2. Install hydraulic lines per diagram below. See next page for Case Drain Installation. Note: Stabilizer valve supplies oil to crane using the Power Beyond feature.
3. Install hydraulic reservoir with return filter. Attach pump pressure line to valve, return link to tank.
4. Fill system with hydraulic oil (See Stellar® Lubrication Recommendations for fluid details).



Winch Case Drain Installation

WARNING

Follow the instructions presented on this page. Failure to follow these instructions may result in death or serious injury.

Installing the winch case drain

1. The winch case drain must run directly to the reservoir to ensure no back pressure in the line.
2. Use 3/8" hydraulic hose and fittings rated for a minimum of 300 psi.
3. Locate the winch case drain line at the bottom of the crane base as shown in Fig. 1 (Blue Hose).
Note: Both the main pressure and winch case drane line use a 3/8" swivel fitting. Verify the winch case drain is attached to the hose that is connected to the winch motor.
4. Attach one end of the winch case drain to 3/8 swivel fitting located in step 3.
5. Route the winch case drain hose directly to the reservoir.
6. Connect the second end of the winch case drain to unshared fitting on the top of the reservoir as shown in Fig 2.

Fig.1

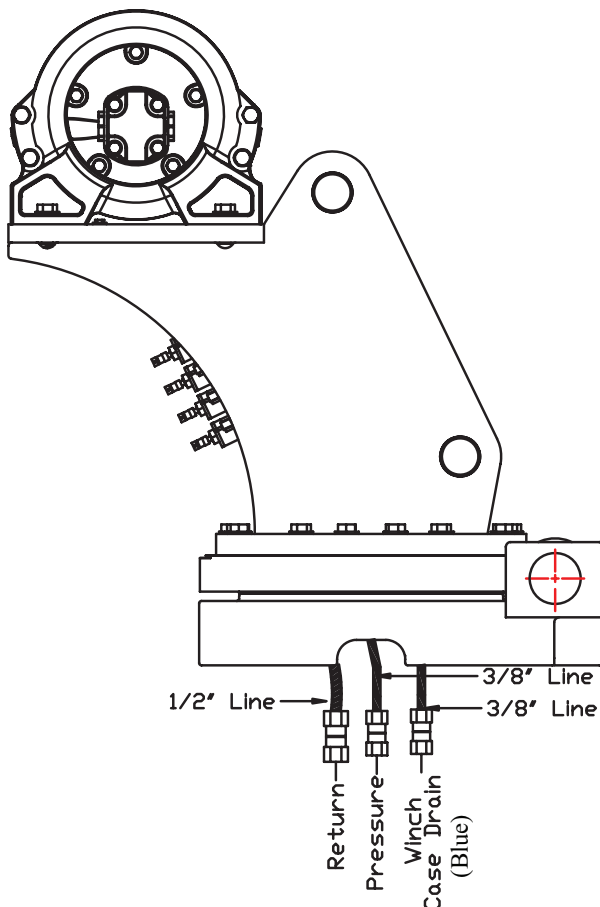
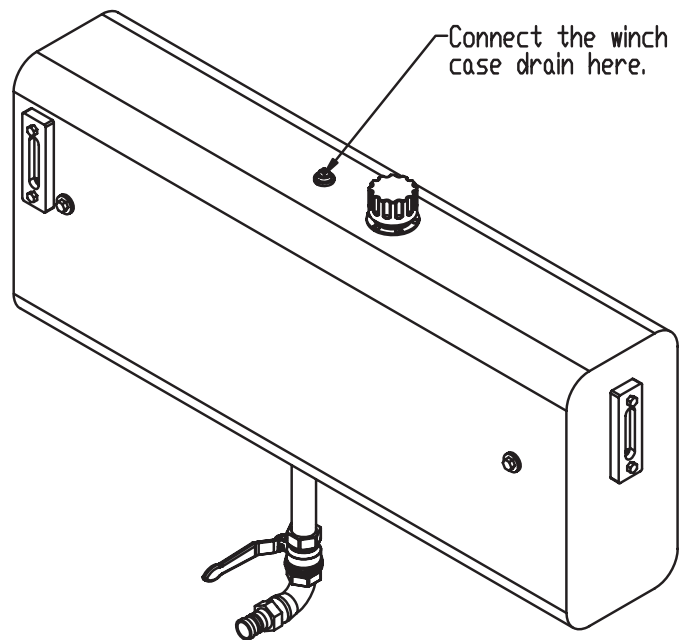
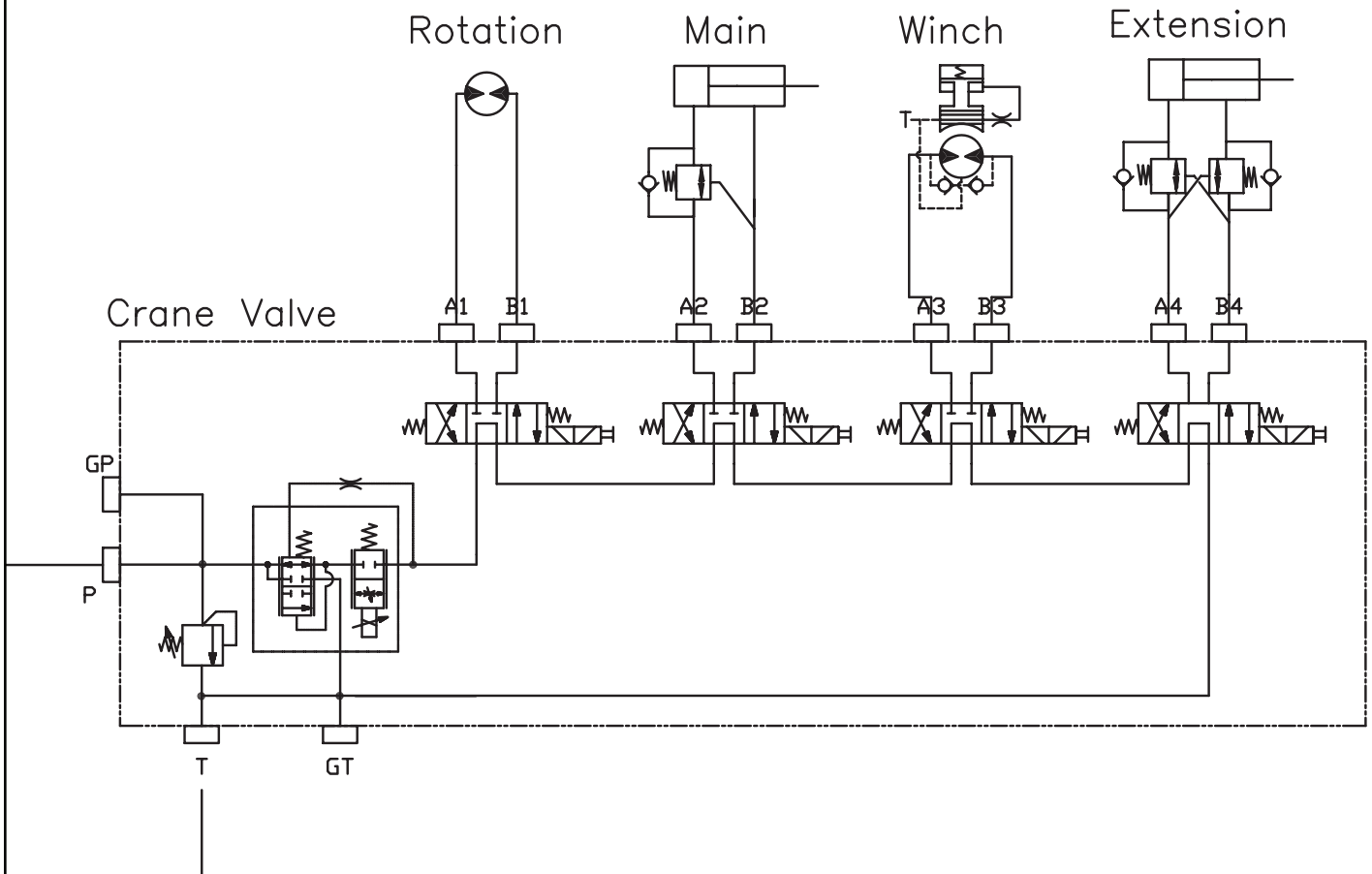


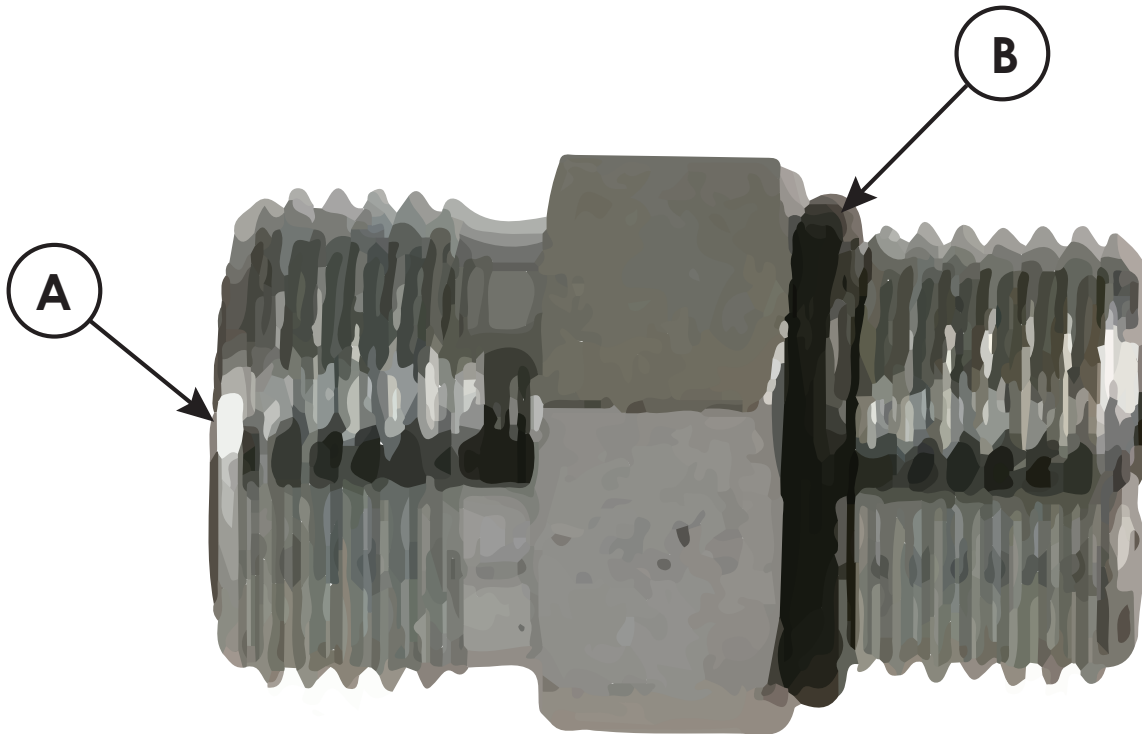
Fig. 2



Hydraulic System



Face Seal/O-Ring Size Chart



| Hose Size | Fitting Size | Face Seal (A) Stellar® PN | O-ring Boss (B) Stellar® PN |
|-----------|--------------|------------------------------|--------------------------------|
| 1/4" | #4 | C2027 | D1245 |
| 3/8" | #6 | C2028 | D1246 |
| 1/2" | #8 | C2029 | D1247 |
| 5/8" | #10 | 32223 | D1248 |
| 3/4" | #12 | D1244 | D1249 |
| 1" | #16 | | D1250 |

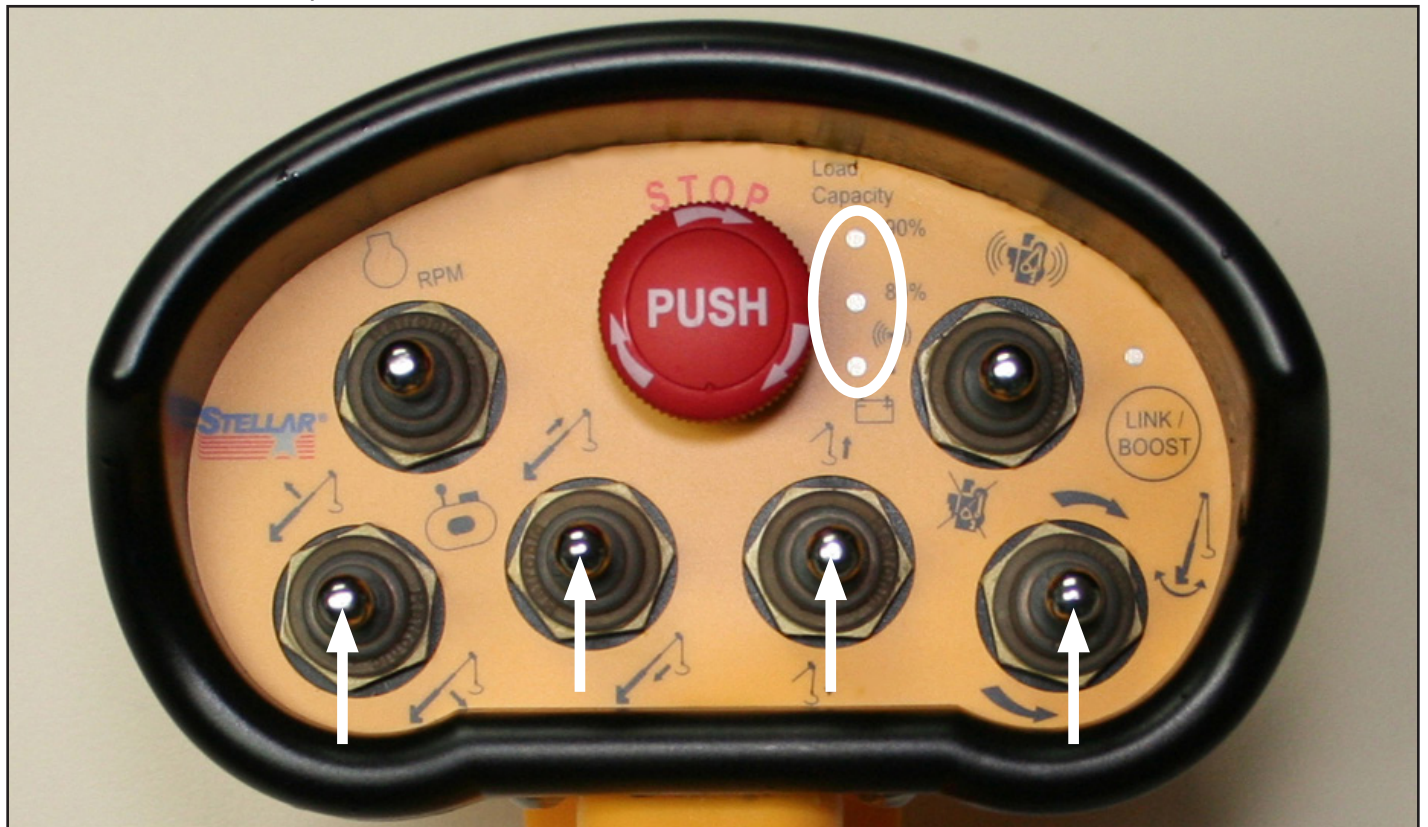
Stability Procedure

Definition of Stability for the Stellar Telescopic Crane Products:

A truck is stable until the load cannot be lifted off the ground with the winch, without tipping over the truck. Every Stellar crane installed must be tested for stability to determine the actual load capacity of the final truck package. The actual test data must be recorded and supplied with the truck at the time of in-service and should be kept with the truck at all times. The following procedure will test the truck package for stability and will provide a stability capacity chart. The load limit information shown on the stability capacity chart is formulated on 85% tipping.

Set Up:

1. Locate the truck on a test course in position for loading and engage travel brakes.
2. Set stabilizers so that they make contact with firm, level footing.
3. Operate the crane under partial load to assure operator proficiency and proper machine function.
4. Put the radio into Stability Test Mode:
 - A. Push the bottom four switches up and hold until all lights come on (approximately 5 seconds.)



- B. At this point, the crane will have enough capacity to handle the weight for the stability test.
- C. The radio will timeout of stability mode after 30 minutes or when the E-Stop button is pushed.

Note: The radio can only be put into stability mode five times. After that, the radio would have to be returned to Stellar to be reprogrammed to allow additional stability testing. All other radio functions will work properly even if stability mode is not available.

Stability Procedure Continued...

7630 Stability Data

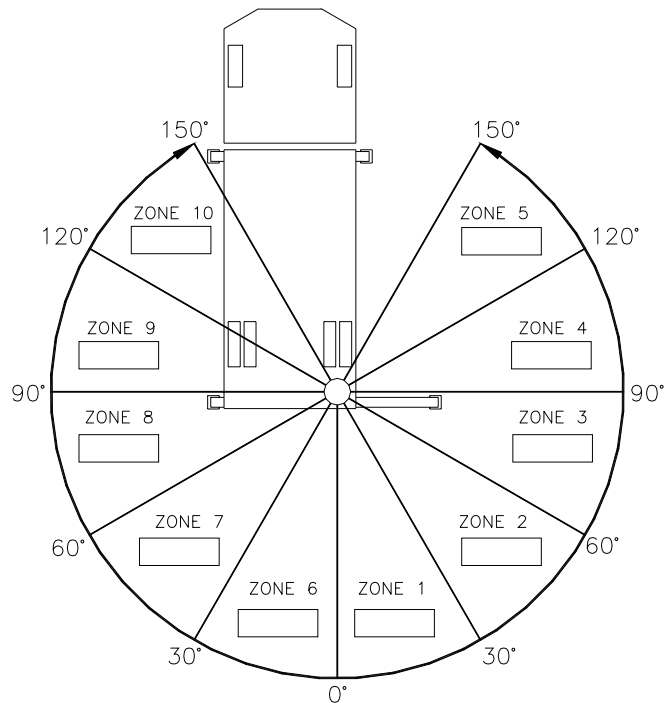
Max Horizontal Reach: 355" (From the center of rotation to boom tip)

Boost Stability Test Weight: 1,760 lbs.

Non-Boost Stability Test Weight: 1,490 lbs.

Test Procedure

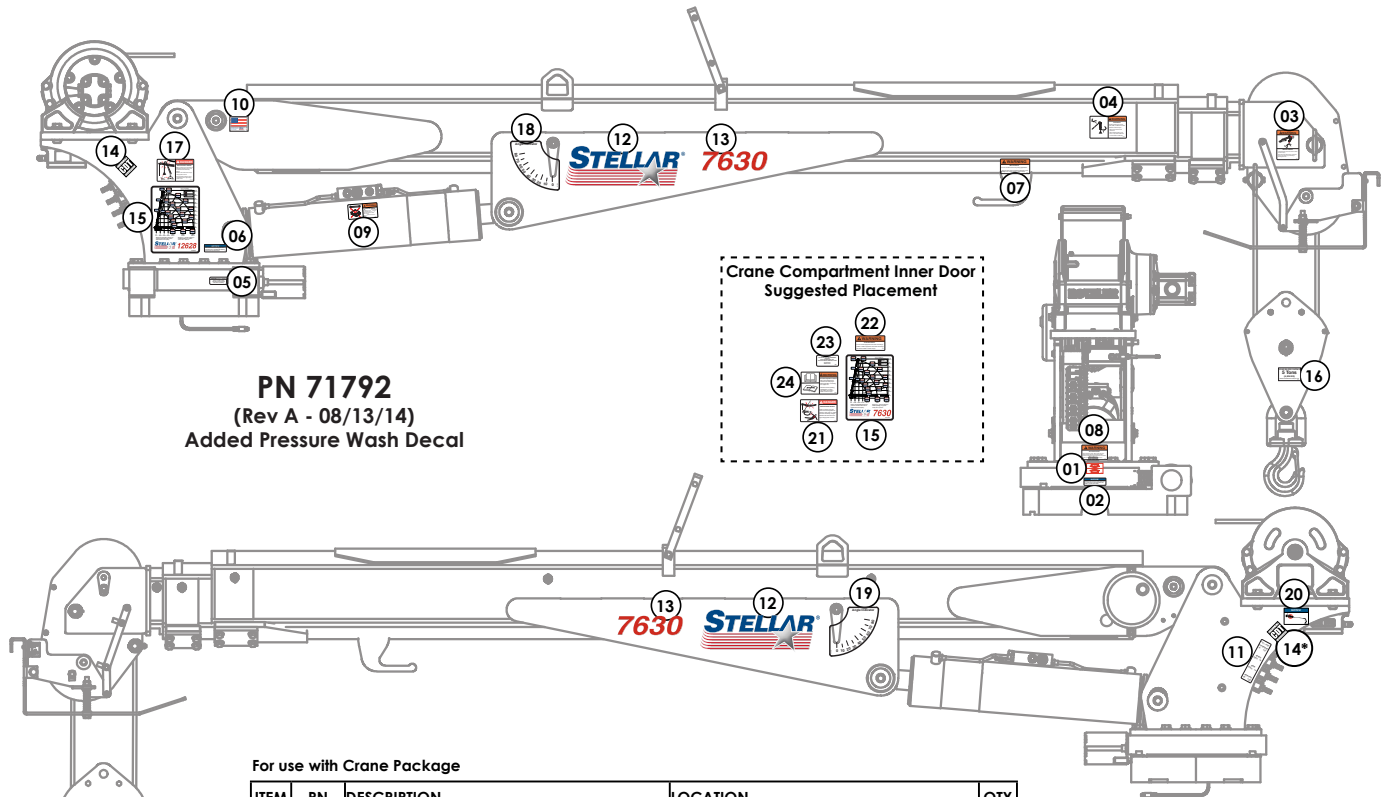
1. Rotate the crane into Zone 1 position.
2. With the crane fully retracted and the boom horizontal, winch the test weight off the ground. Note: Keep weight within six inches of the ground at all times.
3. Extend the boom outward until full extension has been reached or until the truck becomes unstable (Again, use the winch to keep the weight within six inches of the ground.)
4. If the boom goes full extension without becoming unstable, the crane is termed stable for this zone and 100% can be written in the Zone 1 data box.
5. If the truck becomes unstable prior to going full extension, retract the boom until the truck becomes stable and measure the horizontal reach in this position (center of rotation to boom tip). This is the stable horizontal reach for this zone. Stable horizontal reach divided by Maximum horizontal reach multiplied by 100 equals the percentage of rated capacity for this zone. Use the following formula to determine the percentage of rated capacity:



$$\frac{\text{Stable Horizontal Reach}}{\text{Max Horizontal Reach}} \times 100 = \text{Percentage of Rated Capacity}$$

6. Record this number in the data box for Zone 1. This is the revised capacity due to stability for this zone.
7. Repeat this procedure for each zone until the worksheet is completed.
8. This is the revised capacity based on stability of this package.

Decal Placement - PN 71792



PN 71792
(Rev A - 08/13/14)
Added Pressure Wash Decal

For use with Crane Package

| ITEM | PN | DESCRIPTION | LOCATION | QTY |
|------|-------|----------------------------------|--|-----|
| 01 | 4188 | DECAL ROTATION ALIGNMENT | Crane Base | 1 |
| 02 | 9188 | DECAL ROTATE/GREASE | Crane Base | 1 |
| 03 | 12300 | DECAL WARNING TWO BLOCKING | Crane Horse Head | 1 |
| 04 | 12451 | DECAL WARNING HOISTING PERSONNEL | Main Boom | 1 |
| 05 | 15171 | DECAL GREASE WORM | Crane Base | 1 |
| 06 | 15172 | DECAL ASME/ANSI B30.22/B30.5 | Crane Mast | 1 |
| 07 | 24712 | DECAL WARNING STOW HOOK | Crane Boom above stow hook | 1 |
| 08 | 25159 | DECAL WARNING MANUAL OVERRIDES | Under Valve Bank | 1 |
| 09 | 28256 | DECAL WARNING OVERLOAD DEVICE | Main Cylinder | 1 |
| 10 | 35234 | DECAL STELLAR MADE IN THE USA | Main Boom | 1 |
| 11 | 52270 | DECAL VB CONTROL MECH CRANE | On side of Crane Mast | 1 |
| 12 | 52681 | DECAL STELLAR LOGO 6.5 X 18 | Main Boom (Both Sides) | 2 |
| 13 | 71793 | DECAL IDENTIFICATION 7630 | Main Boom (Both Sides) | 2 |
| 14* | 54588 | DECAL CDT 2.00 x 2.00 | CDT ONLY - Crane Mast (Both Sides) | 2 |
| 14* | 71895 | DECAL CDT PLUS 2.00 x 2.00 | CDT PLUS ONLY - Crane Mast (Both Sides) | 2 |
| 15 | 71794 | DECAL CAPACITY 7630 | Main Boom and Crane Compartment | 2 |
| 16 | 38472 | DECAL SNATCH BLOCK 5 TON | Snatch Block | 1 |
| 17 | C1179 | DECAL DANGER ELECTROCUTION SMALL | Crane Mast | 1 |
| 18 | D1196 | DECAL ANGLE INDICATOR CS | Main Boom | 1 |
| 19 | D1197 | DECAL ANGLE INDICATOR SS | Main Boom | 1 |
| 20 | 73929 | DECAL PRESSURE WASH | Crane Mast | 1 |

For use with Body/Chassis Package

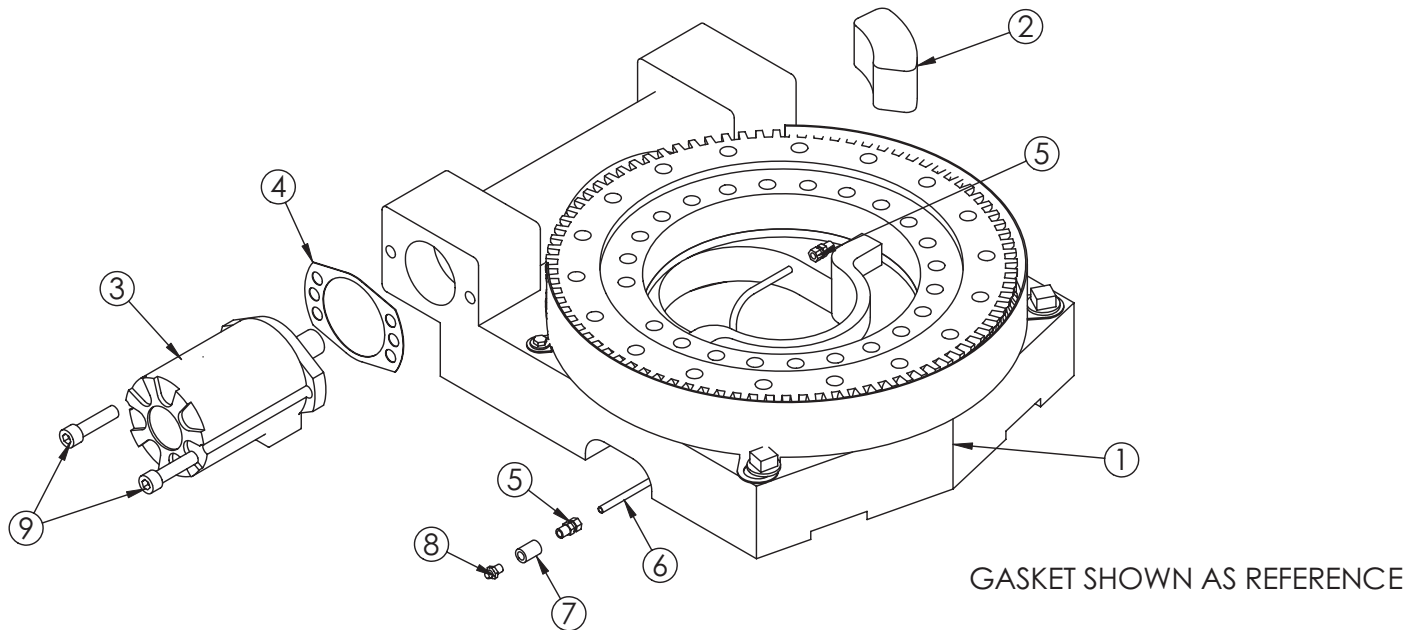
| ITEM | PN | DESCRIPTION | LOCATION | QTY |
|------|-------|-----------------------------------|----------------------------------|-----|
| 21 | 4186 | DECAL DANGER ELECTROCUTION REMOTE | Crane Compartment | 1 |
| 22 | 4189 | DECAL WARNING OVERLOAD | Crane Compartment | 1 |
| 23 | 4214 | DECAL SERVICE | Crane Compartment | 1 |
| 24 | 68024 | DECAL WARNING UNTRAINED OPERATOR | Crane Compartment | 1 |
| 25** | C4545 | DECAL DANGER ELECTROCUTION LARGE | Four corners of the body/chassis | 4 |
| 26** | C5910 | DECAL STELLAR 4x9.5 | Suggested: Rear body/tailgate | 1 |
| 27** | C5911 | DECAL STELLAR 2x4.5 | Suggested: Side corners of body | 3 |

* For CDT™ equipped cranes, use PN 54588. For CDTplus™ equipped cranes, use PN 71895.

** Not shown.

Chapter 3 - Assembly Drawings

Base Assembly - PN 50364

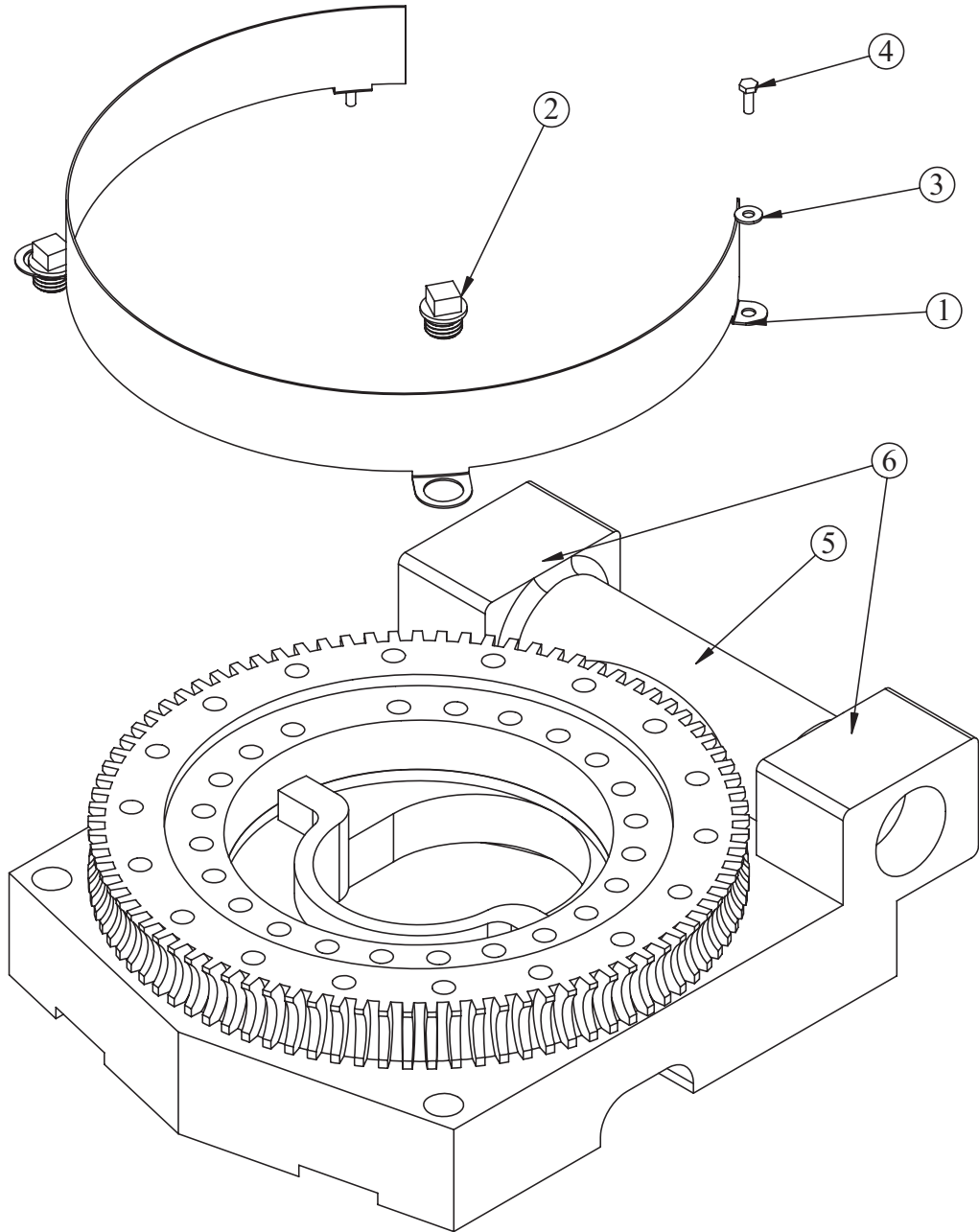


PN 50364

| ITEM | PART | DESCRIPTION | QTY. |
|------|-------|---------------------------------------|------|
| 1 | 47869 | BEARING SWING DRIVE CAST 6620 GEARTEK | 1 |
| 2 | 11542 | STOP 3820 400 SLIDE | 1 |
| 3 | C6069 | MOTOR HYD ROSS MK080613AAAB | 1 |
| 4 | 21151 | GASKET MOTOR 008-10056-1 | 1 |
| 5 | D1345 | FTG CPRSN 0.12NPT/0.25 TUBE | 2 |
| 6 | D1810 | TBE AIR SAEJ844 TYPE A .25 (RM) | 1 |
| 7 | C2256 | FTG COUPLER PIPE 0.13 | 1 |
| 8 | 56589 | ZERK 1/8 NPT STRAIGHT LONG THREAD | 1 |
| 9 | 53495 | CAP SCR 0.50-13X2.00 SH | 2 |

NOTE: ITEMS 1 INCLUDE GUARD & GUARD FASTENERS

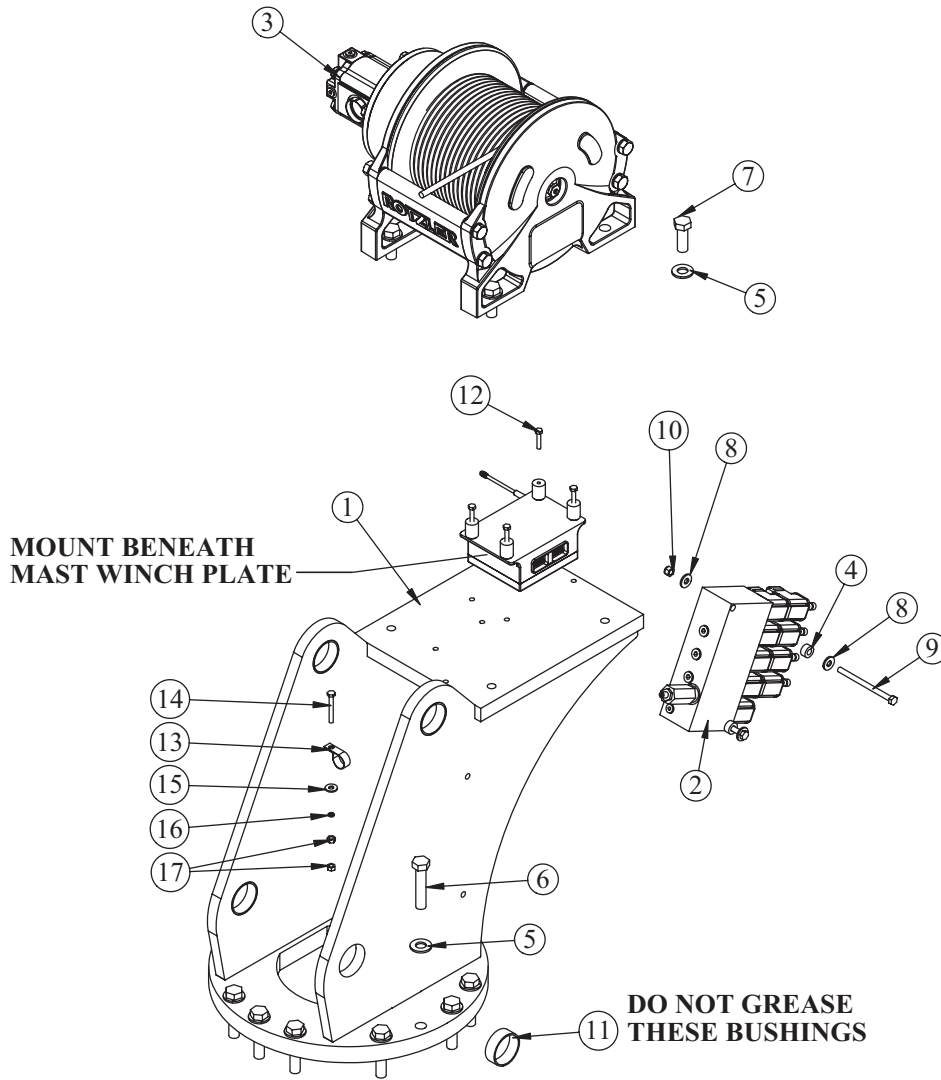
Gear Bearing - PN 47869



PN 47869

| ITEM | PART | DESCRIPTION | QTY. |
|------|---------|--|------|
| 1 | 44551PC | GUARD TB 6620 CRANE LZR | 1 |
| 2 | 13959 | CAP SCR 1.00-8 X .63 PLASTIC | 2 |
| 3 | 0340 | WASHER 0.25 FLAT | 2 |
| 4 | 0479 | CAP SCR 0.25-20X0.75 HHGR5 | 2 |
| 5 | 55827 | WORM PERFECTION 66/76 | 1 |
| 6 | 55829 | BEARING AND SEAL KIT 66/76 PERFECTION CAST | 1 |

Mast Assembly - PN 72793

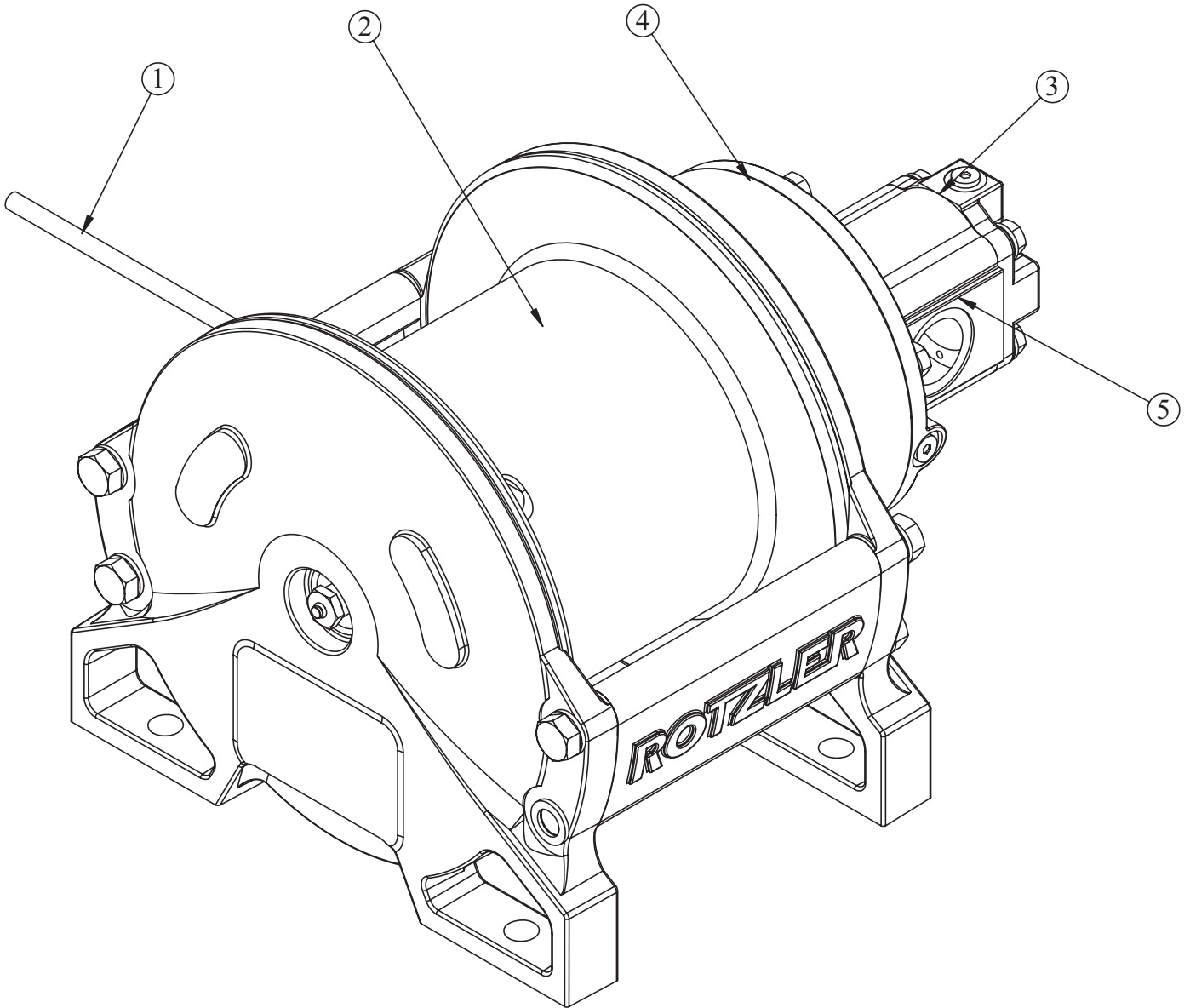


PN 72793

| ITEM | PART | DESCRIPTION | QTY. |
|------|-------|--|------|
| 1 | 70824 | MAST 126/106/96/76 | 1 |
| 2 | 52265 | VB 4 SECT W/PROP STER8GPM DEUTSCH | 1 |
| 3 | 63517 | WINCH 3750 TH2CC230246 W/120 FT ROPE | 1 |
| 4 | 27813 | COLLAR 0.38X0.75X0.38 UHMW | 2 |
| 5 | C5902 | WASHER 0.63 SAE FLAT YELLOW GR8 | 18 |
| 6 | D1034 | CAP SCR 0.63-11X3.00 HHGR8 W/RED PATCH | 14 |
| 7 | 11693 | CAP SCR 0.63-11X1.75 HHGR8 | 4 |
| 8 | 0343 | WASHER 0.31 USS FLAT ZINC | 4 |
| 9 | C0933 | CAP SCR 0.31-18X4.50 HHGR5 | 2 |
| 10 | 0342 | NUT 0.31-18 HHGR5 NYLOC | 2 |
| 11 | 44533 | BUSHING COMPOSITE 2.00X0.75 | 4 |
| 12 | 52490 | CAP SCR 6MMX30MM HH 8.8(GR5) | 4 |
| 13 | C5946 | HOSE CLAMP #8 RUBBER COATED | 1 |
| 14 | 0481 | CAP SCR 0.25-20X2.00 HHGR5 | 1 |
| 15 | 0340 | WASHER 0.25 USS FLAT ZINC | 1 |
| 16 | 0521 | WASHER 0.25 LOCK | 1 |
| 17 | 1056 | NUT 0.25-20 HHGR5 | 2 |

RADIO RECEIVER RUBBER MOUNT 64977

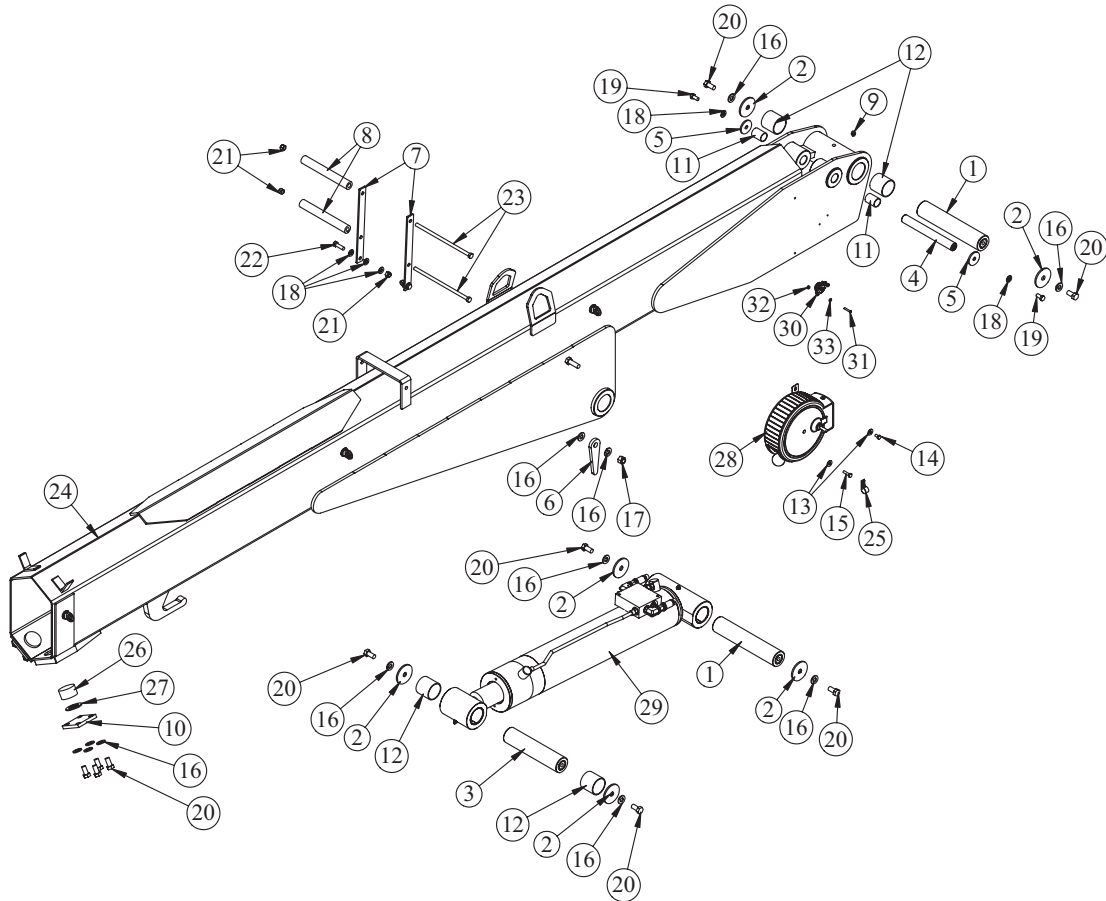
Winch - PN 63517



PN 63517

| ITEM | PART | DESCRIPTION | QTY. |
|------|-------|--|------|
| 1 | 23454 | WIRE ROPE 3/8 6X31 IWRC-DGXIP 120FT | 1 |
| 2 | 53492 | SEAL KIT ROTZLER TH2 WINCH | 1 |
| 3 | 71907 | SEAL KIT ROTZLER WINCH MOTOR 23CC/31CC | 1 |
| 4 | 72680 | SEAL & HARDWAREKIT WINCH MOTOR COVER ROTZLER TH2 | 1 |
| 5 | 71905 | MOTOR WINCH 3750 ROTZLER M.TH2.CC.23 | 1 |

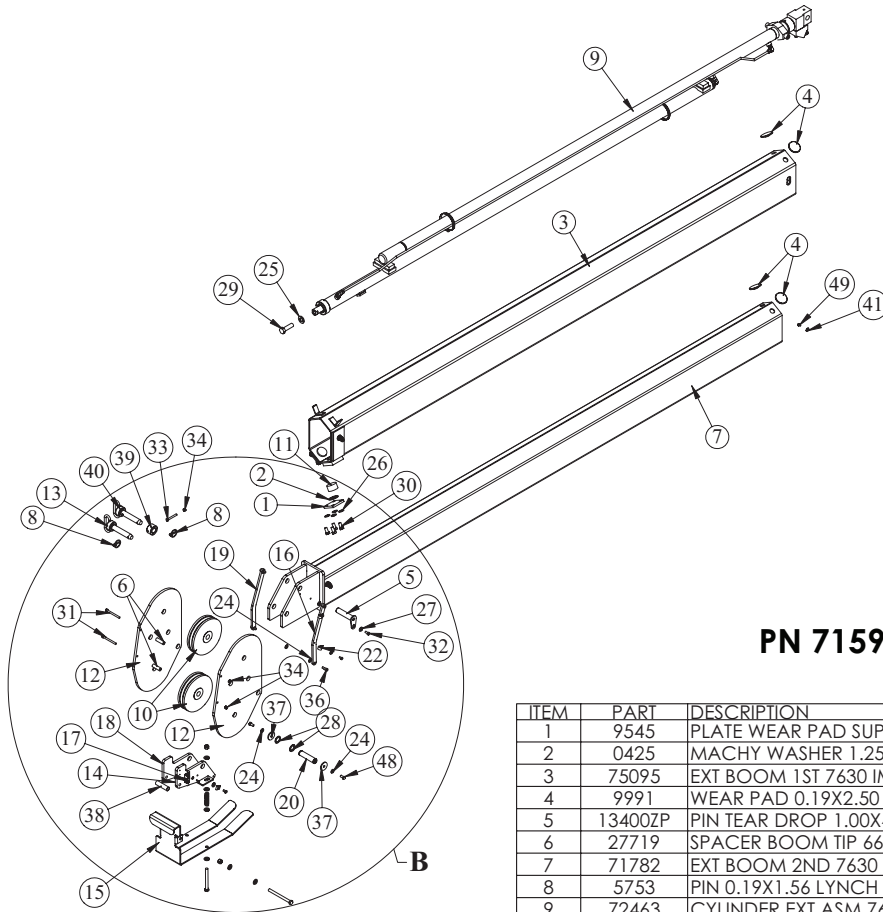
Main Boom Assembly - PN 72794



PN 72794

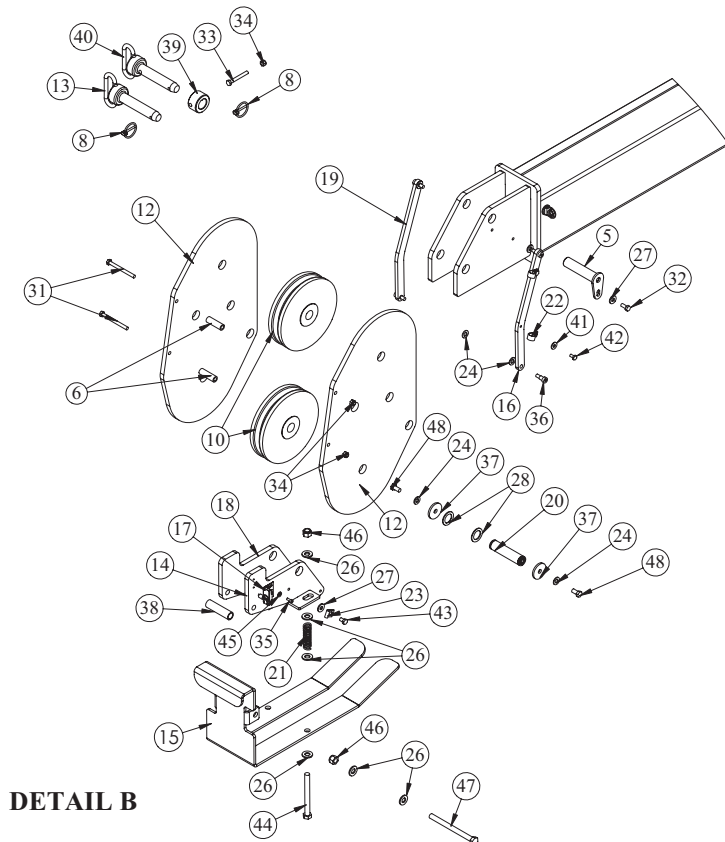
| ITEM | PART | DESCRIPTION | QTY. |
|------|---------|---------------------------------|------|
| 1 | 9709CR | PIN 2.00X10.19 D&T | 2 |
| 2 | 9142 | PIN CAP 0.56X2.50X0.19 | 6 |
| 3 | 9711CR | PIN 2.00X8.88 D&T | 1 |
| 4 | 9712CR | PIN 1.00X8.38 SR/D&T | 1 |
| 5 | 9320 | PIN CAP 0.44X1.75X0.19 SS | 2 |
| 6 | D1194 | PLATE ANGLE INDICATOR | 2 |
| 7 | 69470PC | BRKT ROPE GUIDE 4421 | 2 |
| 8 | 27720 | SPACER ROPE GUIDE 6620 UHMW | 2 |
| 9 | c1592 | ZERK 1/8 NPT STRAIGHT | 1 |
| 10 | 9545 | PLATE WEAR PAD SUPPORT | 2 |
| 11 | 0068 | BUSHING BPC16DXR24 1.00X1.50 | 2 |
| 12 | 4381 | BUSHING BPC32DXR32 2.00X2.00 | 4 |
| 13 | 0340 | WASHER 0.25 USS FLAT ZINC | 2 |
| 14 | 0478 | CAP SCR 0.25-20X0.50 HHGR5 | 1 |
| 15 | 0480 | CAP SCR 0.25-20X1.00 HHGR5 | 1 |
| 16 | D0790 | WASHER 0.50 SAE FLAT YELLOW GR8 | 18 |
| 17 | C6106 | NUT 0.50-13 HHGR5 NYLOC | 2 |
| 18 | C6353 | WASHER 0.38 SAE FLAT YELLOW GR8 | 8 |
| 19 | 9843 | CAP SCR 0.38-16X0.75 HHGR8 | 2 |
| 20 | 10172 | CAP SCR 0.50-13X1.00 HHGR8 | 14 |
| 21 | 0347 | NUT 0.38-16 HHGR5 NYLOC | 4 |
| 22 | 0335 | CAP SCR 0.38-16X1.25 HHGR5 | 2 |
| 23 | 12168 | CAP SCR 0.38-16X9.00 HHGR5 | 2 |
| 24 | 71780 | INNER BOOM 7630 | 1 |
| 25 | C0078 | CLAMP 0.38 BLK VINYL | 1 |
| 26 | 9363 | WEAR PAD 1.12X2.00 RND NYLATRON | 2 |
| 27 | 0425 | MACHY WASHER 1.25ID 10GA | 2 |
| 28 | 72601 | CORD REEL ASM 30 FT CRANE | 1 |
| 29 | 71461 | CYLINDER ASM 4.50X22.50 | 1 |
| 30 | 53493 | INCLINOMETER 60 DEG | 1 |
| 31 | 18618 | SCREW #6-32X1.00 PHMS PH | 2 |
| 32 | D0076 | NUT #6-32 HH NYLOC SS | 2 |
| 33 | 18765 | WASHER #6 SAE FLAT ZINC | 2 |

Extension Boom Assembly - PN 71599



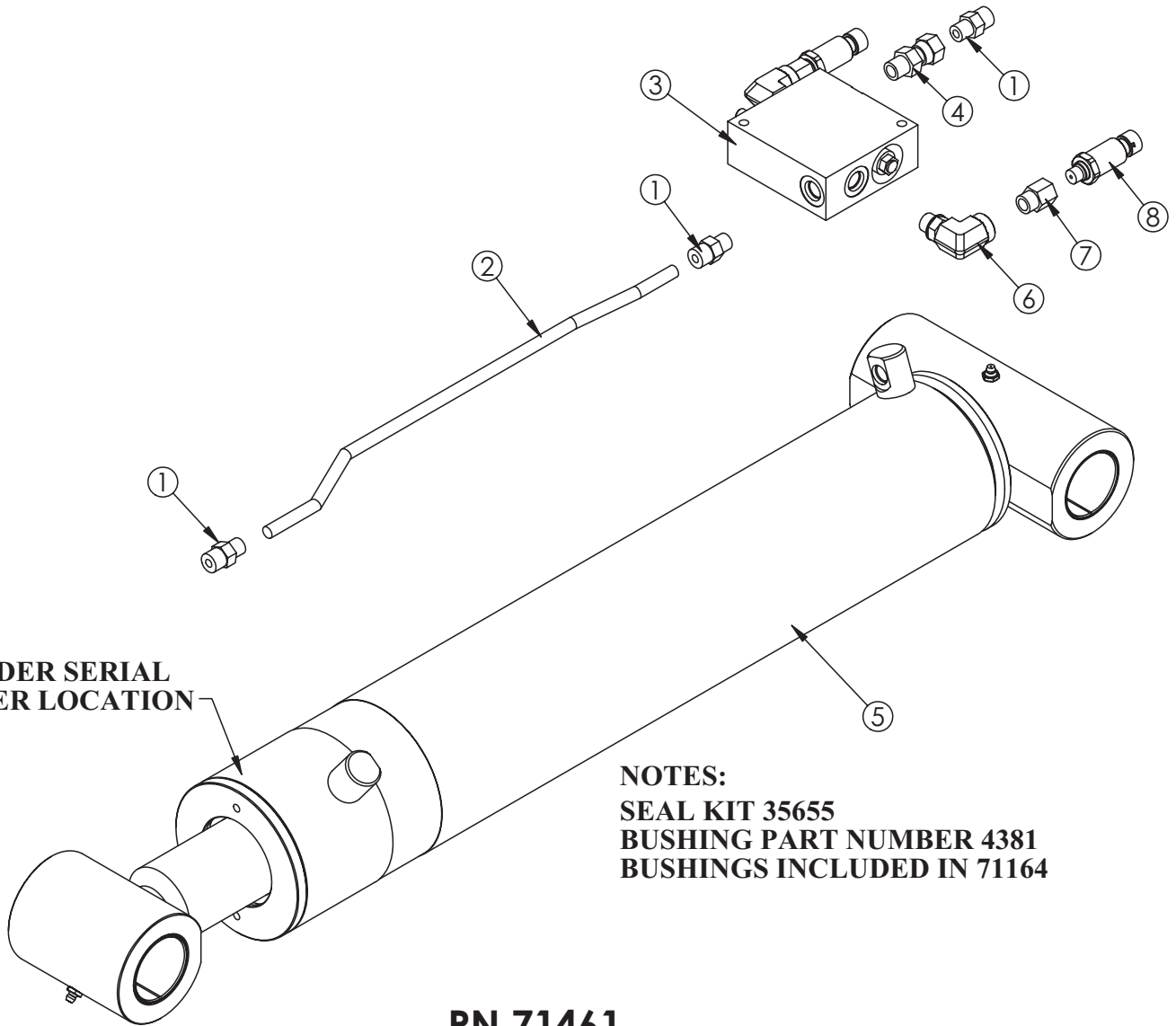
PN 71599

| ITEM | PART | DESCRIPTION | QTY. |
|------|---------|--|------|
| 1 | 9545 | PLATE WEAR PAD SUPPORT | 2 |
| 2 | 0425 | MACHY WASHER 1.25ID 10GA | 2 |
| 3 | 75095 | EXT BOOM 1ST 7630 IMPROVED | 1 |
| 4 | 9991 | WEAR PAD 0.19X2.50 RND NYLATRON | 4 |
| 5 | 13400ZP | PIN TEAR DROP 1.00X4.38 | 1 |
| 6 | 27719 | SPACER BOOM TIP 6620 UHMW | 2 |
| 7 | 71782 | EXT BOOM 2ND 7630 FS/CRADLE A2B | 1 |
| 8 | 5753 | PIN 0.19X1.56 LYNCH | 2 |
| 9 | 72463 | CYLINDER EXT ASM 7630 | 1 |
| 10 | 13339 | SHEAVE 7621 8.00 DIA .38R/1.88THK | 2 |
| 11 | 9363 | WEAR PAD 1.12X2.00 RND NYLATRON | 2 |
| 12 | 71459 | PLATE SHEAVE MOUNTING FS/CRADLE 12630 | 2 |
| 13 | 12824 | PIN HITCH 1.00X4.50 | 1 |
| 14 | 61051 | MNT CRADLE LH FS/CRADLE A2B 106/126 | 1 |
| 15 | 61048 | CRADLE FS/CRADLE A2B 106/126 | 1 |
| 16 | 71462 | LINK FS/CRADLE A2B 12630 W/HOLES | 1 |
| 17 | 35105 | SWITCH LIMIT E1117-B9111-6C | 1 |
| 18 | 61054 | MNT CRADLE RH FS/CRADLE A2B 106/126 | 1 |
| 19 | 71463 | LINK FS/CRADLE A2B 12630 | 1 |
| 20 | 37680ZP | PIN 1.00X4.19 SR | 1 |
| 21 | 27710 | SPRING ANTI 2 BLOCK CRADLE A2B | 2 |
| 22 | C0078 | CLAMP 0.38 BLK VINYL | 2 |
| 23 | 31279 | CLAMP 0.31 BLK VINYL | 1 |
| 24 | C6353 | WASHER 0.38 SAE FLAT YELLOW GR8 | 6 |
| 25 | C6219 | WASHER 0.75 SAE FLAT YELLOW GR8 | 1 |
| 26 | D0790 | WASHER 0.50 SAE FLAT YELLOW GR8 | 18 |
| 27 | 0343 | WASHER 0.31 USS FLAT ZINC | 2 |
| 28 | 0867 | MACHY WASHER 1.00ID 14GA | 2 |
| 29 | 4974 | CAP SCR 0.75-10X2.50 HHGR8 W/RED PATCH | 1 |
| 30 | 10172 | CAP SCR 0.50-13X1.00 HHGR8 | 8 |
| 31 | 0490 | CAP SCR 0.31-18X3.50 HHGR5 | 2 |
| 32 | 0420 | CAP SCR 0.31-18X0.75 HHGR5 | 1 |
| 33 | 0489 | CAP SCR 0.31-18X2.50 HHGR5 | 1 |
| 34 | 0342 | NUT 0.31-18 HHGR5 NYLOC | 3 |
| 35 | 31132 | CAP SCR #10-24X0.550 SH SS 18-8 | 2 |
| 36 | 61053 | BOLT SHOULDER 0.38X0.50 0.31-18X0.50 | 4 |
| 37 | 9320 | PIN CAP 0.56X3.50X.25 | 2 |
| 38 | 61548PC | PIPE 0.50X 3.13 SCH40 | 1 |
| 39 | 61549PC | COLLAR 1.13X2.00X1.13 W/HOLE | 1 |
| 40 | 45125 | PIN HITCH 1.00 FORK KPCC | 1 |
| 41 | 0340 | WASHER 0.25 USS FLAT ZINC | 3 |
| 42 | 0478 | CAP SCR 0.25-20X0.50 HHGR5 | 2 |
| 43 | 0484 | CAP SCR 0.31-18X0.50 HHGR5 | 1 |
| 44 | C1000 | CAP SCR 0.50-13X5.00 HHGR5 | 2 |
| 45 | D0178 | WASHER #10 SAE FLAT ZINC | 2 |
| 46 | C6106 | NUT 0.50-13 HHGR5 NYLOC | 3 |
| 47 | C1002 | CAP SCR 0.50-13X6.00 HHGR5 | 1 |
| 48 | 9843 | CAP SCR 0.38-16X0.75 HHGR8 | 2 |
| 49 | 43845 | CAP SCR 0.25-20X0.38 HHGR5 | 1 |



DETAIL B

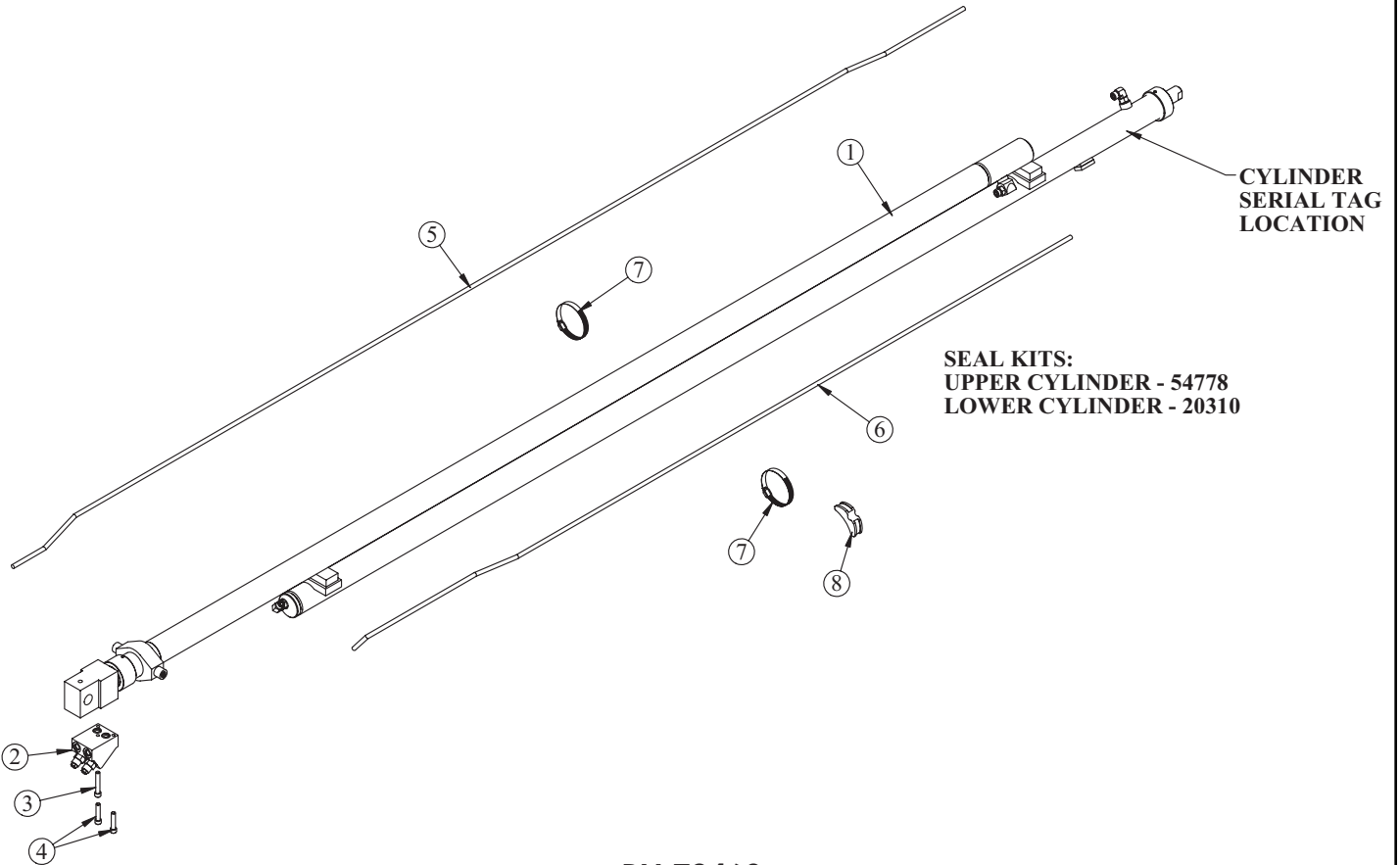
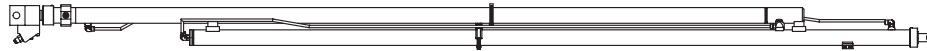
Main Cylinder Assembly - PN 71461



PN 71461

| ITEM | PART | DESCRIPTION | QTY. |
|------|-------|--------------------------------------|------|
| 1 | 0279 | FTG 6-6 MFS-MORB STRAIGHT | 3 |
| 2 | 71460 | TUBE ASM 0.38 X 16.72 12630 MAIN CYL | 1 |
| 3 | 13080 | MANIFOLD SINGLE T11A 3500 PSI | 1 |
| 4 | 33743 | FTG 6-6 FFSS-MORB STRAIGHT | 1 |
| 5 | 71164 | CYLINDER 4.50X22.50 | 1 |
| 6 | 3861 | FTG 6-6 MAORB-FORB 90 | 2 |
| 7 | 15111 | FTG 6-4 MORB-FORB STRAIGHT REDUCER | 2 |
| 8 | 28485 | TRANSDUCER PRESSURE 5000 PSI | 2 |

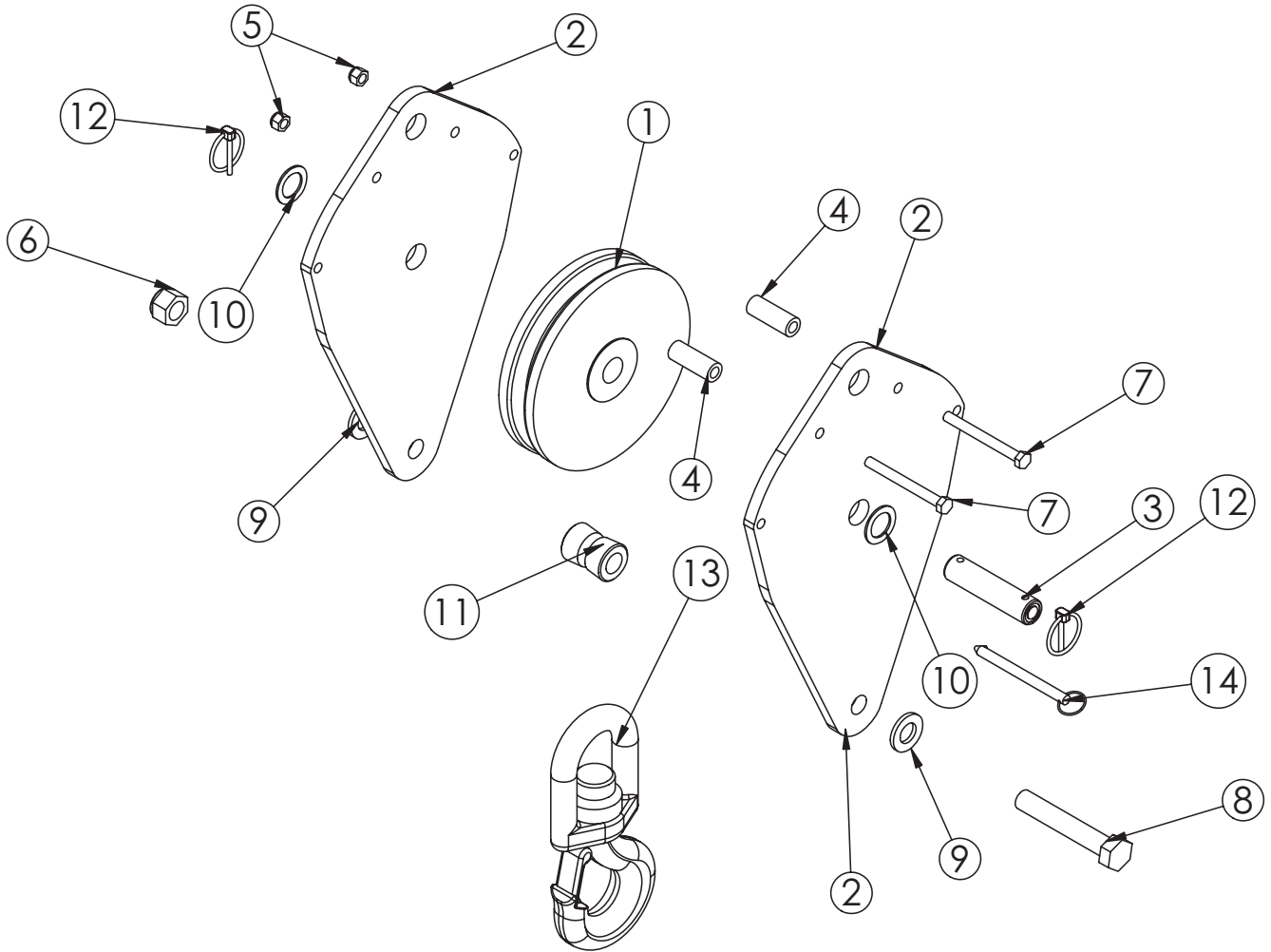
Extension Cylinder Assembly - PN 72463



PN 72463

| ITEM | PART | DESCRIPTION | QTY. |
|------|-------|--------------------------------------|------|
| 1 | 72464 | CYLINDER EXT 7630 2 STAGE 2.0/2.0 | 1 |
| 2 | 14115 | MANIFOLD ASM 6620 EXT CBBB-LJN-XVN | 1 |
| 3 | 14601 | CAP SCR 0.38-16X2.25 SH ZC | 1 |
| 4 | 11882 | CAP SCR 0.38-16X1.75 SH ZC | 2 |
| 5 | 71456 | TUBE ASM 0.38 X 120.00 EXT CYL 12630 | 1 |
| 6 | 71457 | TUBE ASM 0.38 X 89.25 EXT CYL 12630 | 1 |
| 7 | 24729 | HOSE CLAMP #52 3.00 - 3.75 | 2 |
| 8 | 18701 | CLAMP PORT TUBE ZR518 | 1 |

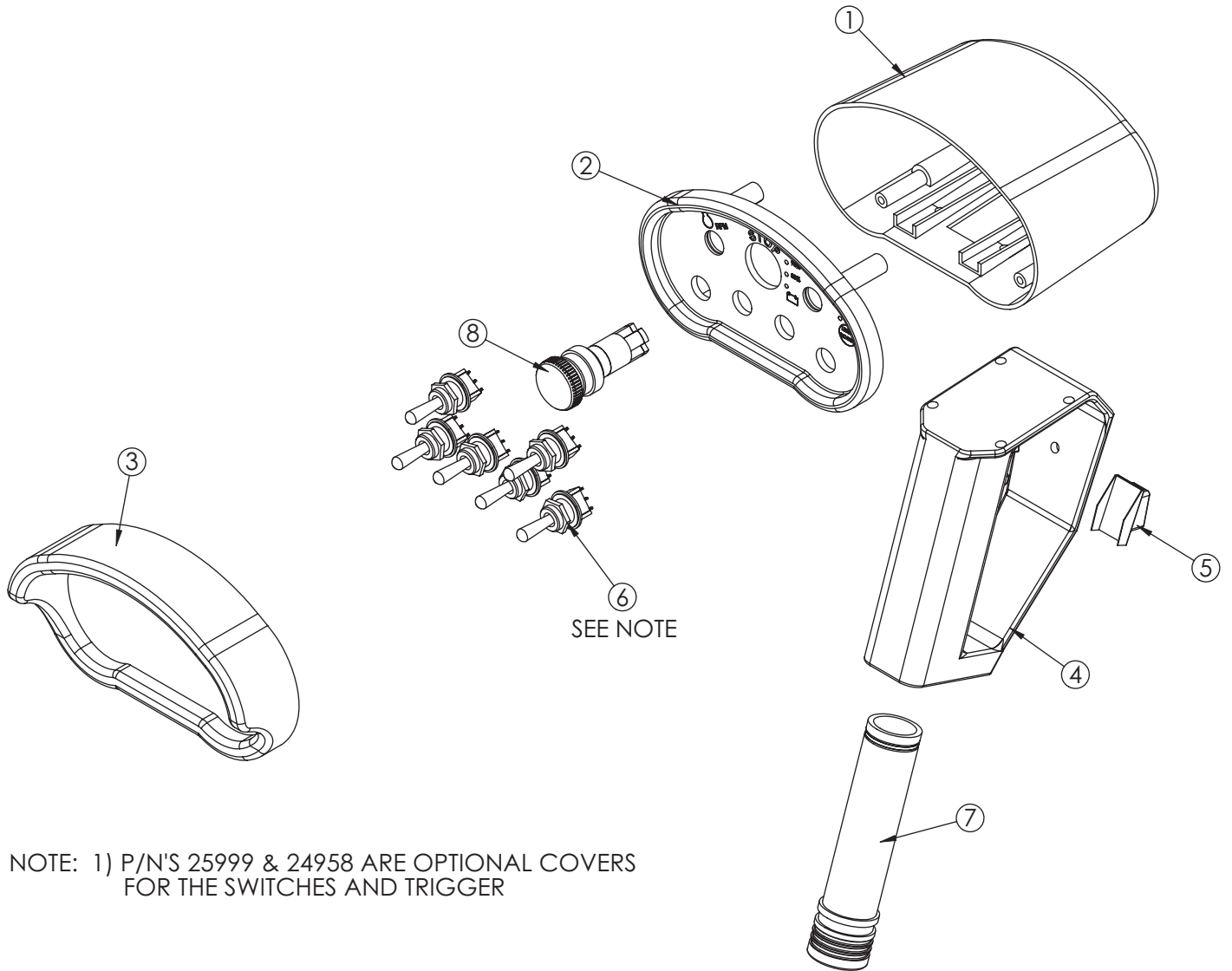
Cable & Hook Assembly - PN 56266



PN 56266

| ITEM | PART | DESCRIPTION | Default |
|------|---------|-----------------------------------|---------|
| 1 | 13339 | SHEAVE 7621 8.00 DIA .38R/1.88THK | 1 |
| 2 | 53263PC | PLATE SNATCH BLOCK 76/96/106/126 | 2 |
| 3 | 39874ZP | PIN 1.00X4.06 COTTER | 1 |
| 4 | 44643 | COLLAR 0.44X0.75X2.00 | 2 |
| 5 | 0347 | NUT 0.38-16 HHGR5 NYLOC | 2 |
| 6 | C0538 | NUT 0.75-10 HHGR8 NYLOC | 1 |
| 7 | 0532 | CAP SCR 0.38-16X3.75 HHGR5 | 2 |
| 8 | 5841 | CAP SCR 0.75-10X4.50 HHGR8 | 1 |
| 9 | C6219 | WASHER 0.75 SAE FLAT YELLOW GR8 | 2 |
| 10 | 0867 | MACHY WASHER 1.00ID 14GA | 2 |
| 11 | 39844ZP | BUSHING V HOOK SS | 1 |
| 12 | 5753 | PIN 0.19X1.56 LYNCH | 2 |
| 13 | 25831 | HOOK 5 TON SWIVEL CROSBY 1028623 | 1 |
| 14 | 13436 | PIN .38X4.00 QUICK RELEASE | 1 |

CDT™ Radio Transmitter Assembly - PN 56647



PN 56647

| ITEM | PART | DESCRIPTION | QTY. |
|------|-------|--|------|
| 1 | 20088 | CONTROL HANDLE HOUSING 4 FCTN HET | 1 |
| 2 | 56657 | CONTROL HANDLE FACE PLT W/LABEL 6 FCTN CDT | 1 |
| 3 | 24385 | GUARD RADIO SWITCH 4 FCTN | 1 |
| 4 | 35447 | CONTROL HANDLE GRIP W/TRIGGER HT H2 | 1 |
| 5 | 24958 | RUBBER BOOT TRIGGER GUARD HET | 1 |
| 6 | 22600 | SWITCH TOGGLE HET RADIO 63019300 | 6 |
| 7 | 35441 | BATTERY TUBE AA HETRONIC RADIO | 1 |
| 8 | 47856 | SWITCH E STOP NOVA XL | 1 |



Limited Warranty Statement

Stellar Industries, Inc. (Stellar) warrants products designed and manufactured by Stellar to be free from defects in material and workmanship under proper use and maintenance. Products must be installed and operated in accordance with Stellar's written instructions and capacities. This warranty shall cover the following:

Stellar Cranes, Stellar Hooklift Hoists, Stellar Cable Hoists, Stellar Container Carriers, Stellar Service Trucks, and Stellar X-Tra-Lift Systems:

Twelve (12) month warranty on parts from the date recorded by Stellar as the in-service date, not to extend beyond twenty-four (24) months from date of manufacture,

Twelve (12) month repair labor from the date recorded by Stellar as the in-service date, not to extend beyond twenty-four (24) month from date of manufacture, and

Thirty-six (36) month warranty on all Stellar Manufactured structural parts from the date recorded by Stellar as the in-service date, not to extend beyond forty-eight (48) months from date of manufacture.

Stellar Tarper Systems:

Twelve (12) month warranty on parts from the date recorded by Stellar as the in-service date, not to extend beyond twenty-four (24) months from date of manufacture and

Three (3) month repair labor from the date recorded by Stellar as the in-service date, not to extend beyond fifteen (15) month from date of manufacture.

The in-service date will be derived from the completed warranty registration card. In the event a warranty registration card is not received by Stellar, the factory ship date will be used.

Stellar's obligation under this warranty is limited to, and the sole remedy for any such defect shall be, the repair and/or replacement (at Stellar's option) of the unaltered part and/or component in question. Stellar after-sales service personnel must be notified by telephone, fax, or letter of any warranty-applicable damage within fourteen (14) days of its occurrence. If at all possible, Stellar will ship the replacement part within 24-hours of notification by the most economical, yet expedient, means possible. Expedited freight delivery will be at the expense of the owner.

Warranty claims must be submitted and shall be processed in accordance with Stellar's established warranty claim procedure. Stellar after-sales service personnel must be contacted prior to any warranty claim. A return materials authorization (RMA) account number must be issued to the claiming party prior to the return of any warranty parts. Parts returned without prior authorization will not be recognized for warranty consideration. All damaged parts must be returned to Stellar freight prepaid; freight collect returns will be refused. Freight reimbursement of returned parts will be considered as part of the warranty claim.

Warranty service will be performed by any Stellar new equipment distributor, or by any Stellar-recognized service center authorized to service the type of product involved, or by the Stellar factory in the event of a direct sale. At the time of requesting warranty service, the owner must present evidence of date of delivery of the product. The owner shall be obligated to pay for any overtime labor requested of the servicing company by the owner, any field service call charges, and any towing and/or transportation charges associated with moving the equipment to the designated repair/service provider.

All obligations of Stellar and its authorized dealers and service providers shall be voided if someone other than an authorized Stellar dealer provides other than routine maintenance service without prior written approval from Stellar. In the case repair work is performed on a Stellar-manufactured product, original Stellar parts must be used to keep the warranty in force. The warranty may also be voided if the product is modified or altered in any way not approved, in writing, by Stellar.

The owner/operator is responsible for furnishing proof of the date of original purchase of the Stellar product in question. Warranty registration is the ultimate responsibility of the owner and may be accomplished by the completion and return of the Stellar product registration card provided with the product. If the owner is not sure of registration, he is encouraged to contact Stellar at the address below to confirm registration of the product in question. This warranty covers only defective material and workmanship. It does not cover depreciation or damage caused by normal wear and tear, accident, mishap, untrained operators, or improper or unintended use. The owner has the obligation of performing routine care and maintenance duties as stated in Stellar's written instructions, recommendations, and specifications. Any damage resulting from owner/operator failure to perform such duties shall void the coverage of this warranty. The owner will pay the cost of labor and supplies associated with routine maintenance.

The only remedies the owner has in connection with the breach or performance of any warranty on the Stellar product specified are those set above. In no event will Stellar, the Stellar distributor/dealer, or any company affiliated with Stellar be liable for business interruptions, costs of delay, or for any special, indirect, incidental, or consequential costs or damages. Such costs may include, but are not limited to, loss of time, loss of revenue, loss of use, wages, salaries, commissions, lodging, meals, towing, hydraulic fluid, or any other incidental cost.

All products purchased by Stellar from outside vendors shall be covered by the warranty offered by that respective manufacturer only. Stellar does not participate in, or obligate itself to, any such warranty.

Stellar reserves the right to make changes in design or improvement upon its products without imposing upon itself the same upon its products theretofore manufactured.

This warranty will apply to all Stellar Cranes, Stellar Hooklift Hoists, Stellar Cable Hoists, Stellar Container Carriers, Stellar Service Trucks, Stellar X-Tra-Lift Systems, and Stellar Tarper Systems shipped from Stellar's factory after January 1st, 2010. The warranty is for the use of the original owner only and is not transferable without prior written permission from Stellar.

THIS WARRANTY IS EXPRESSLY IN LIEU OF ANY OTHER WARRANTIES, EXPRESS OR IMPLIED, INCLUDING ANY WARRANTY OF MERCHANTABILITY OR FITNESS FOR A PARTICULAR PURPOSE. REMEDIES UNDER THIS WARRANTY ARE LIMITED TO THE PROVISION OF MATERIAL AND SERVICES, AS SPECIFIED HEREIN. STELLAR INDUSTRIES, INC. IS NOT RESPONSIBLE FOR INCIDENTAL OR CONSEQUENTIAL DAMAGES.

Revision Date: February 2010

Document Number: 37040