



CRANE MODEL 5520C

280 W. 3rd St., Box 169 • Garner, IA 50438 • Phone: 641-923-3741 • Fax: 641-923-2812

UPDATED 08/20/02

TABLE OF CONTENTS
STELLAR CRANE 5520

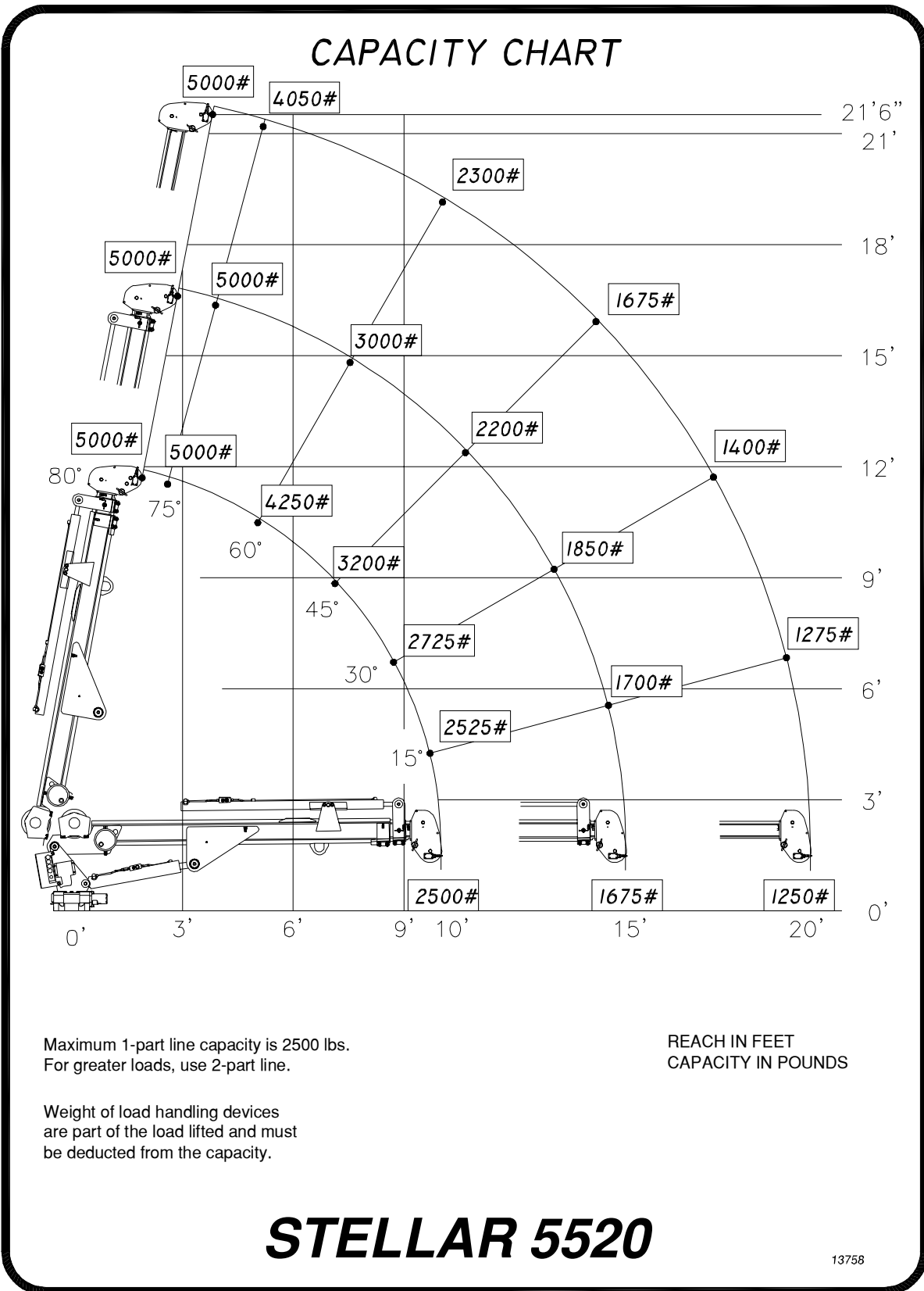
SPECIFICATION SHEET	3
CAPACITY CHART	4
CRANE OPERATION – 7 Function	5
CRANE OPERATION – 4 Function	6
MANUAL OPERATION.....	7
BASE ASSEMBLY	8
MAST ASSEMBLY	9
MAIN BOOM ASSEMBLY	10
EXTENSION BOOMS ASSEMBLY	11
CABLE AND HOOK ASSEMBLY	12
POWER UNIT ASSEMBLY – Electric Version Only	13
CONTROL KIT- Hydraulic Version.....	14
CONTROL KIT - Electric Version	15
HYDRAULIC KIT- Hydraulic Version	16
HYDRAULIC KIT- Electric Version.....	17
INSTALLATION KIT	18
DECAL KIT	19
STABILITY PROCEDURE	20
STABILITY CHART.....	21

SPECIFICATION SHEET

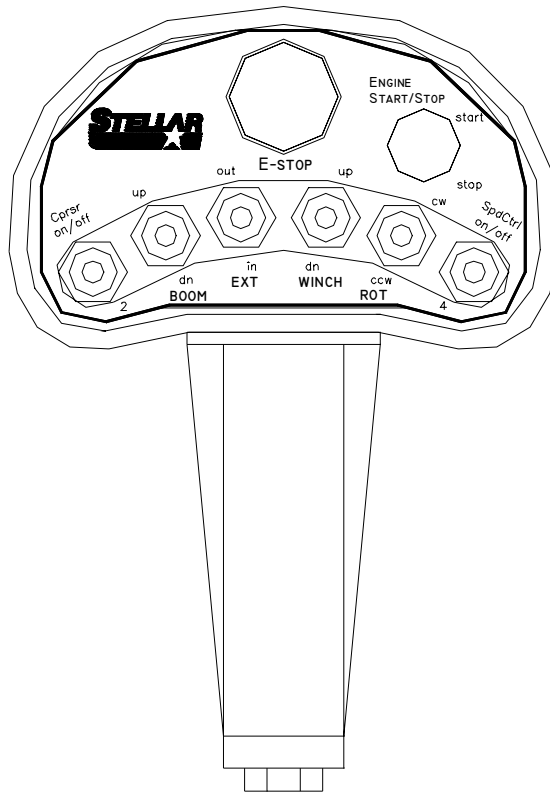
Model 5520 Crane

Crane Rating	25,000 ft-lbs
Standard Boom Length	10' from CL of Crane
Boom Extension	1 st stage: Hydraulic 60" 2 nd stage: Manual 60"
Maximum Horizontal Reach	20' from CL of Crane
Maximum Vertical Lift (from crane base)	21' 4"
Boom Elevation	-5 to +80 degree
Winch Specification	
Rope Diameter	5/16"
Line pull speed	40 ft/min PTO & Pump 20 ft/min 12 Volt
Max. single part line	2500 lbs
Max. double part line	5000 lbs
Rotation	370 degree power (worm gear)
Lifting Capacities	2500 lbs @ 10' 1670 lbs @ 15' 1250 lbs @ 20'
Power Supply Required	PTO & Pump (4.50 gpm @ 2850 psi) 12 Volt Electric (2.00 gpm @ 2850 psi)
Controls	Radio control standard for all functions.
Stowed Height (crane only)	36.50 inches
Mounting Space Required	18 x 20 inches
Approximate Shipping Weight	1100 lbs

CAPACITY CHART



CRANE OPERATION – 7 Function



THIS CRANE IS OPERATED BY A RADIO CONTROL SYSTEM WHICH OPERATES AN ELECTRONIC VALVE BANK. THE CONTROLLER (AS SHOWN) OPERATES THE FOLLOWING FUNCTIONS:

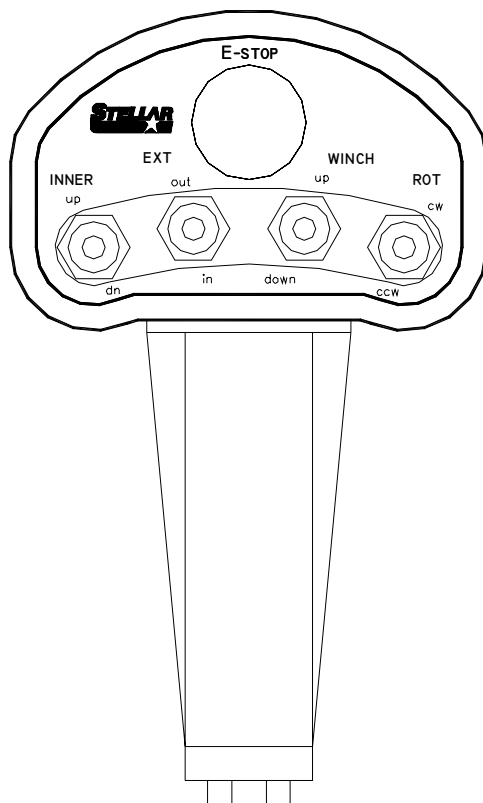
- MAIN BOOM UP & DOWN
- EXTENSION BOOM IN & OUT
- WINCH UP & DOWN
- ROTATION CW & CCW

THIS CONTROLLER CAN ALSO BE UTILIZED TO OPERATE THE FOLLOWING OPTIONAL FUNCTIONS:

- ENGINE START & STOP
- SPEED CONTROL ON & OFF
- COMPRESSOR ON & OFF

TWO OPTIONAL FUNCTIONS ARE ALSO AVAILABLE FOR OTHER CUSTOMER NEEDS. OPTION TWO AND OPTION FOUR ARE BOTH MOMENTARY 12 VOLT FUNCTIONS AND WILL REQUIRE A LATCHING RELAY FOR MOST INSTALLATIONS.

CRANE OPERATION – 4 Function



THIS CRANE IS OPERATED BY A RADIO CONTROL SYSTEM WHICH OPERATES AN ELECTRONIC VALVE BANK. THE CONTROLLER (AS SHOWN) OPERATES THE FOLLOWING FUNCTIONS:

- MAIN BOOM UP & DOWN
- EXTENSION BOOM IN & OUT
- WINCH UP & DOWN
- ROTATION CW & CCW

TO OPERATE THE CRANE, ACTIVATE THE DESIRED TOGGLE SWITCH. THE CRANE WILL NOT FUNCTION UNTIL THE TRIGGER ON THE REMOTE HANDLE IS ACTIVATED. THE CRANE SPEED WILL CHANGE AS THE TRIGGER IS PULLED OR RELEASED.

NOTE: IF THE CRANE DOES NOT OPERATE, CHECK THE BATTERIES LOCATED IN THE REMOTE HANDLE AND REPLACE IF NECESSARY.

MANUAL OPERATION

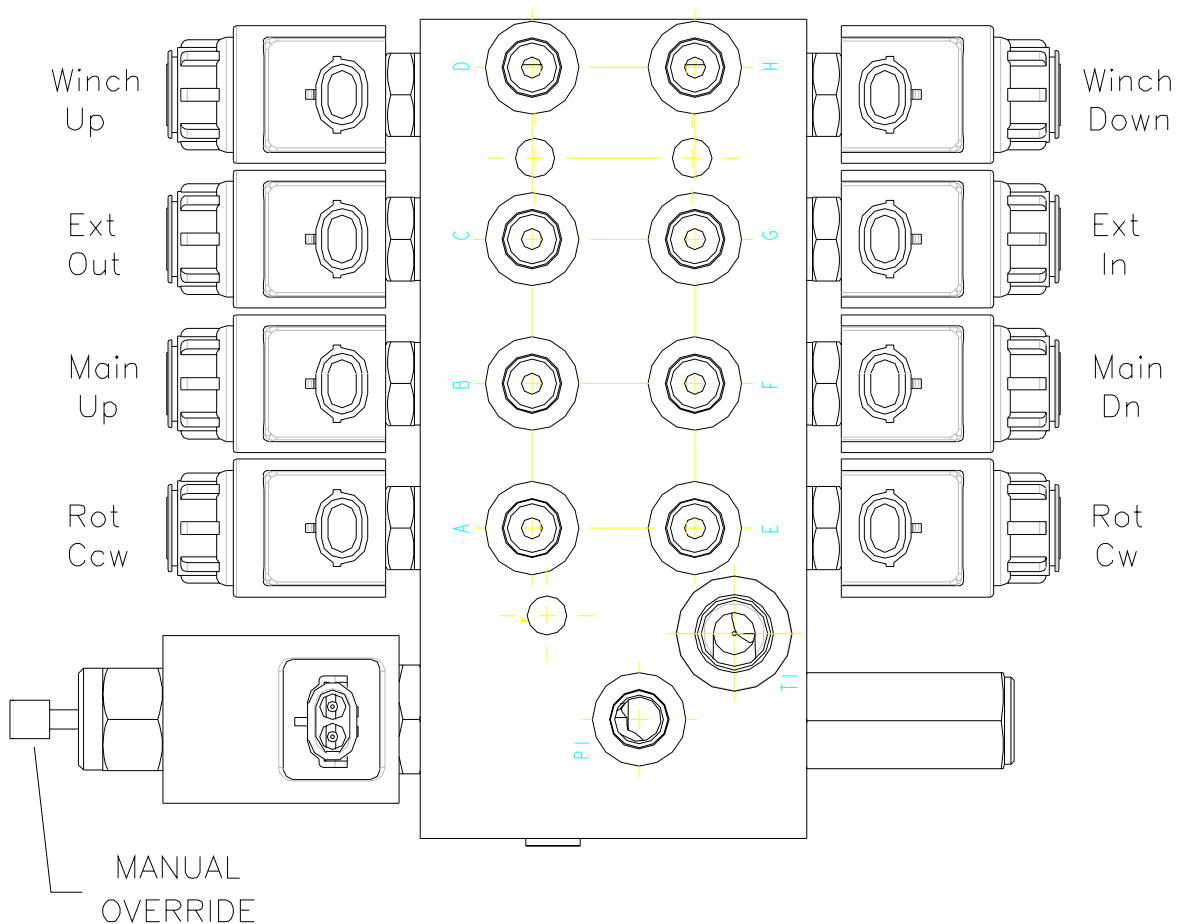
IN CASE OF RADIO FAILURE THE CRANE CAN BE OPERATED USING THE MANUAL OVERRIDES LOCATED ON THE VALVE BANK. USE THE MANUAL OVERRIDES **ONLY** TO GET THE CRANE INTO A STOWED POSITION FOR TRAVEL. HAVE THE EQUIPMENT SERVICED FOR NORMAL RADIO USE.

WARNING

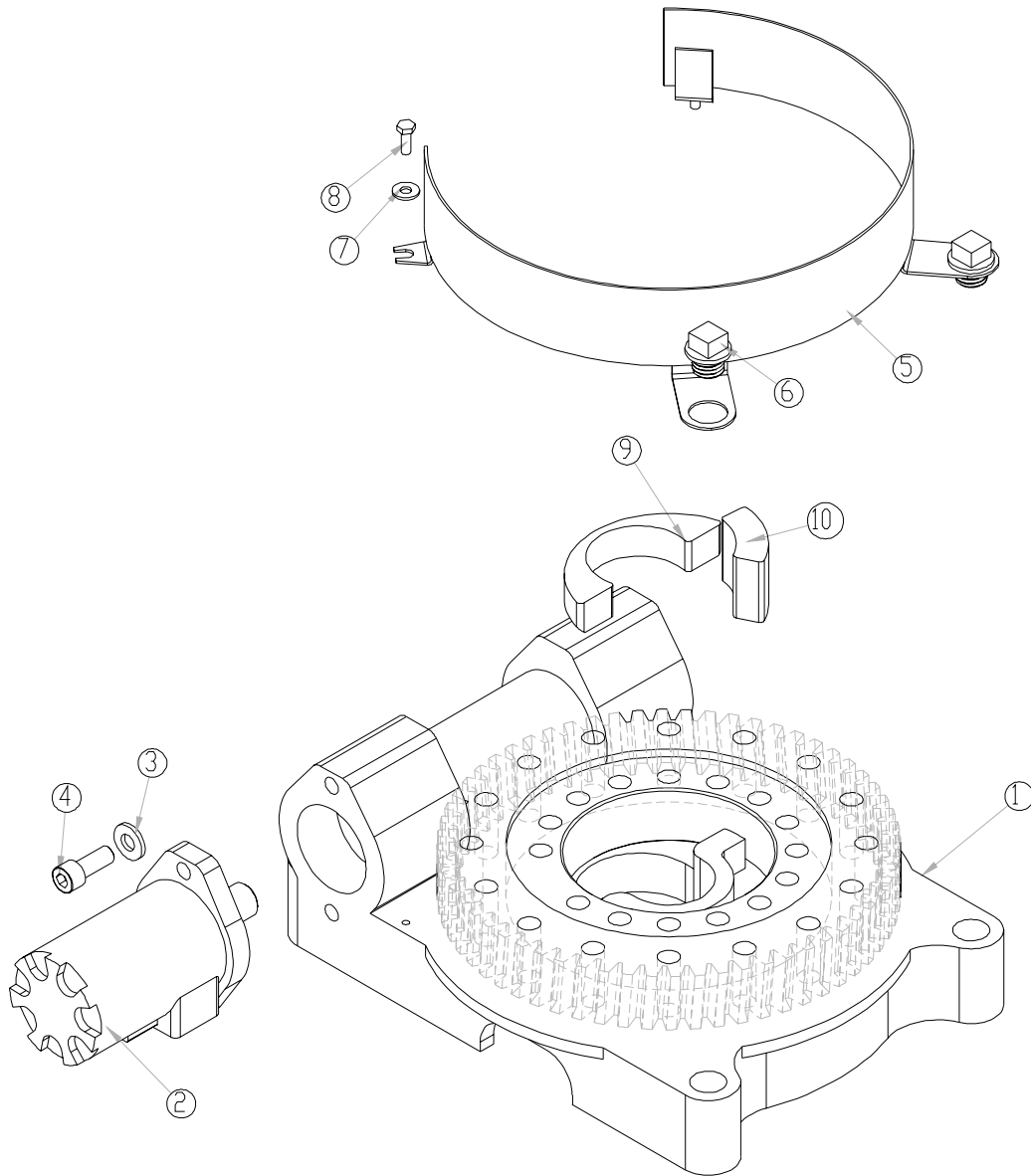
PROLONGED MANUAL OPERATION WILL CAUSE SEVERE DAMAGE TO THE HYDRAULIC SYSTEM.

TO OPERATE CRANE MANUALLY:

- 1.) ACTIVATE MANUAL OVERRIDE VALVE BY TURNING STEM.
- 2.) OPERATE FUNCTIONS AS NEEDED TO STOW CRANE BY PUSHING ON THE END OF THE SOLENOID.
- 3.) RESTORE MANUAL OVERRIDE VALVE TO ORIGINAL POSITION.
- 4.) HAVE UNIT SERVICED.

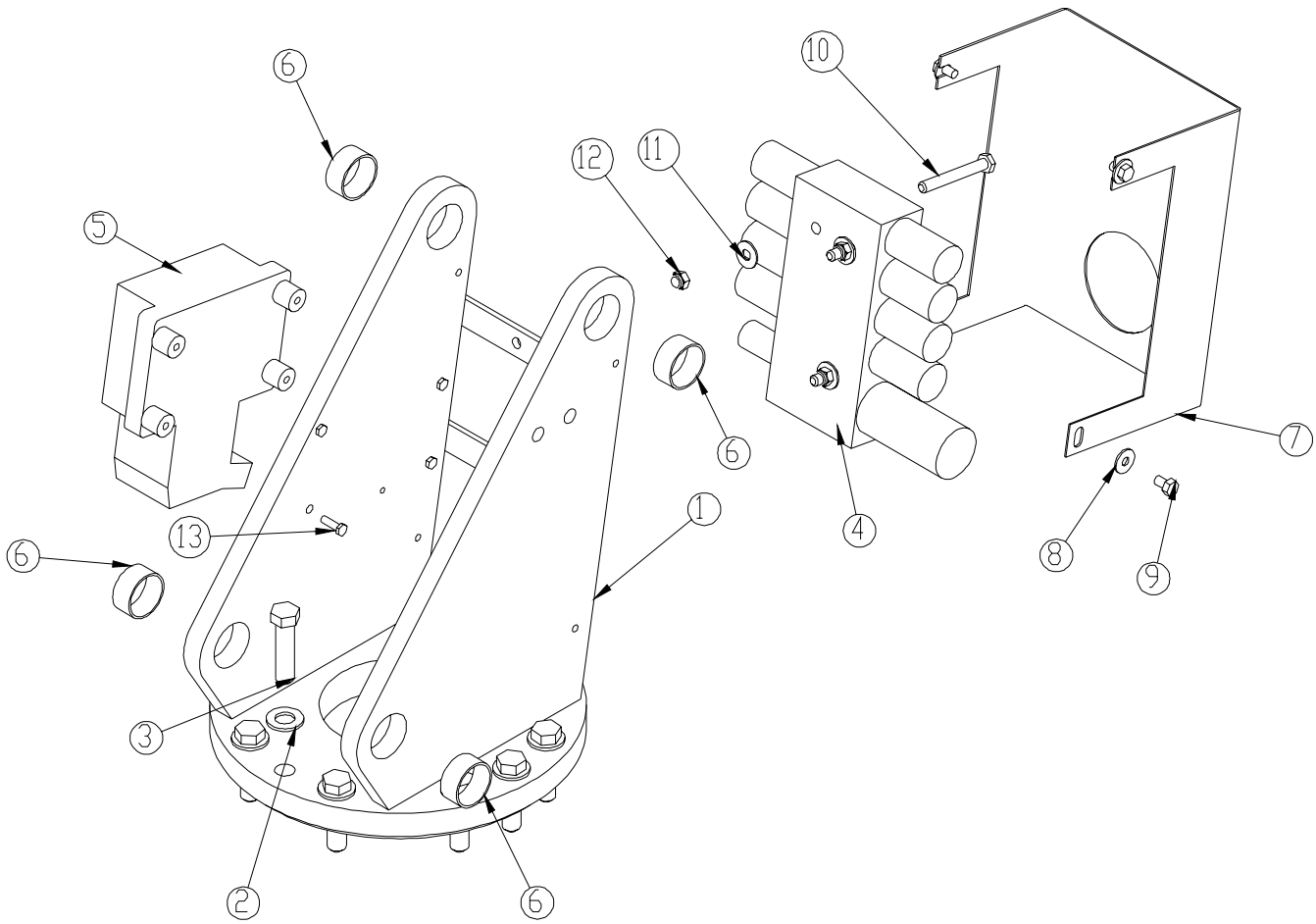


BASE ASSEMBLY P/N 21814



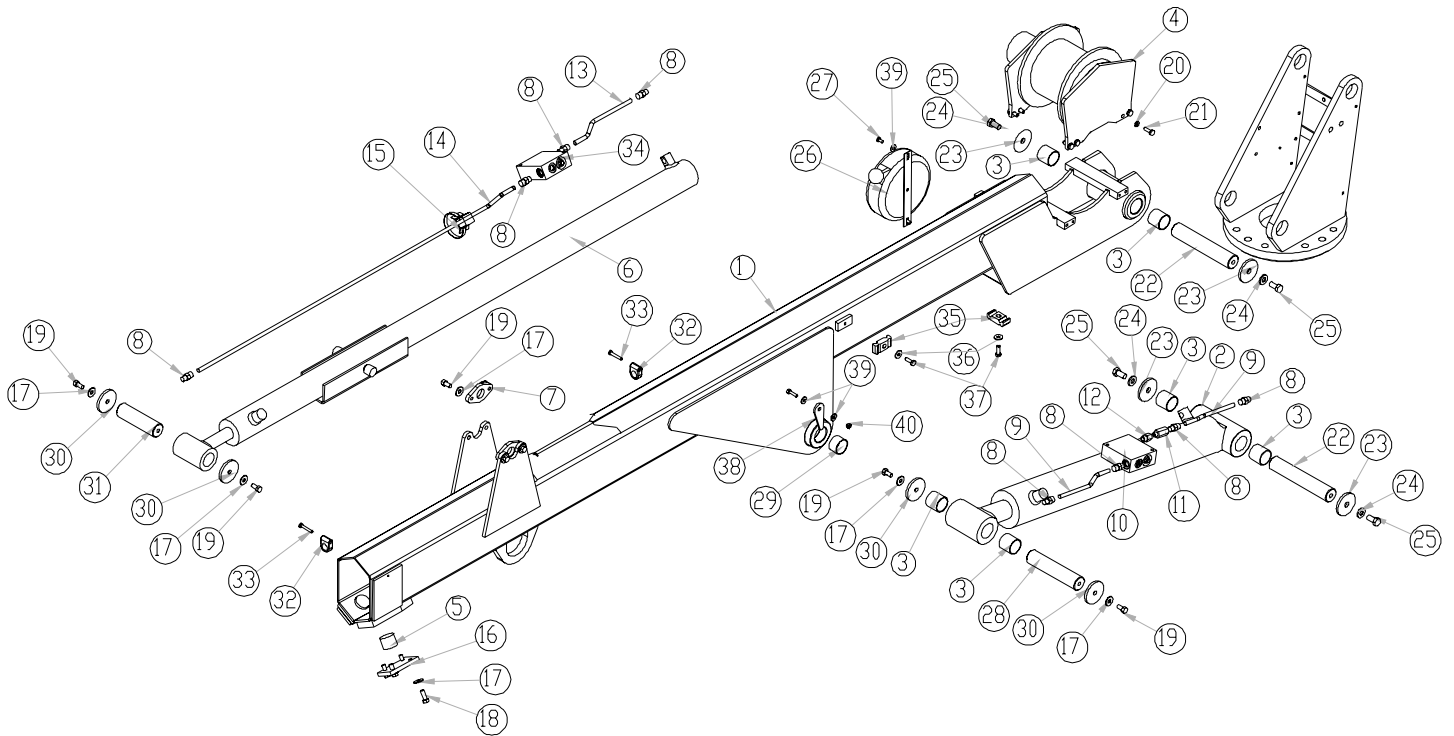
ITEM	PART	DESCRIPTION	QTY.	ITEM	PART	DESCRIPTION	QTY.
1	16653	BEARING SWING DRIVE CAST	1	6	18948	CAP SCR 0.88-9 X .63 PLASTIC	2
2	D1204	ROTATION MOTOR 5520	1	7	0340	WASHER 0.25 FLAT	2
3	D0790	WASHER 0.50 FLAT GR8	2	8	0479	CAP SCR 0.25-20X0.75 HHGR5	2
4	D1307	CAP SCR 0.50-13X1.25 SH	2	9	21164	PLATE CAST BASE 5520	1
5	18945	GUARD TTB 5520 CRANE	1	10	17750	STOP 3515	1

MAST ASSEMBLY P/N 21815



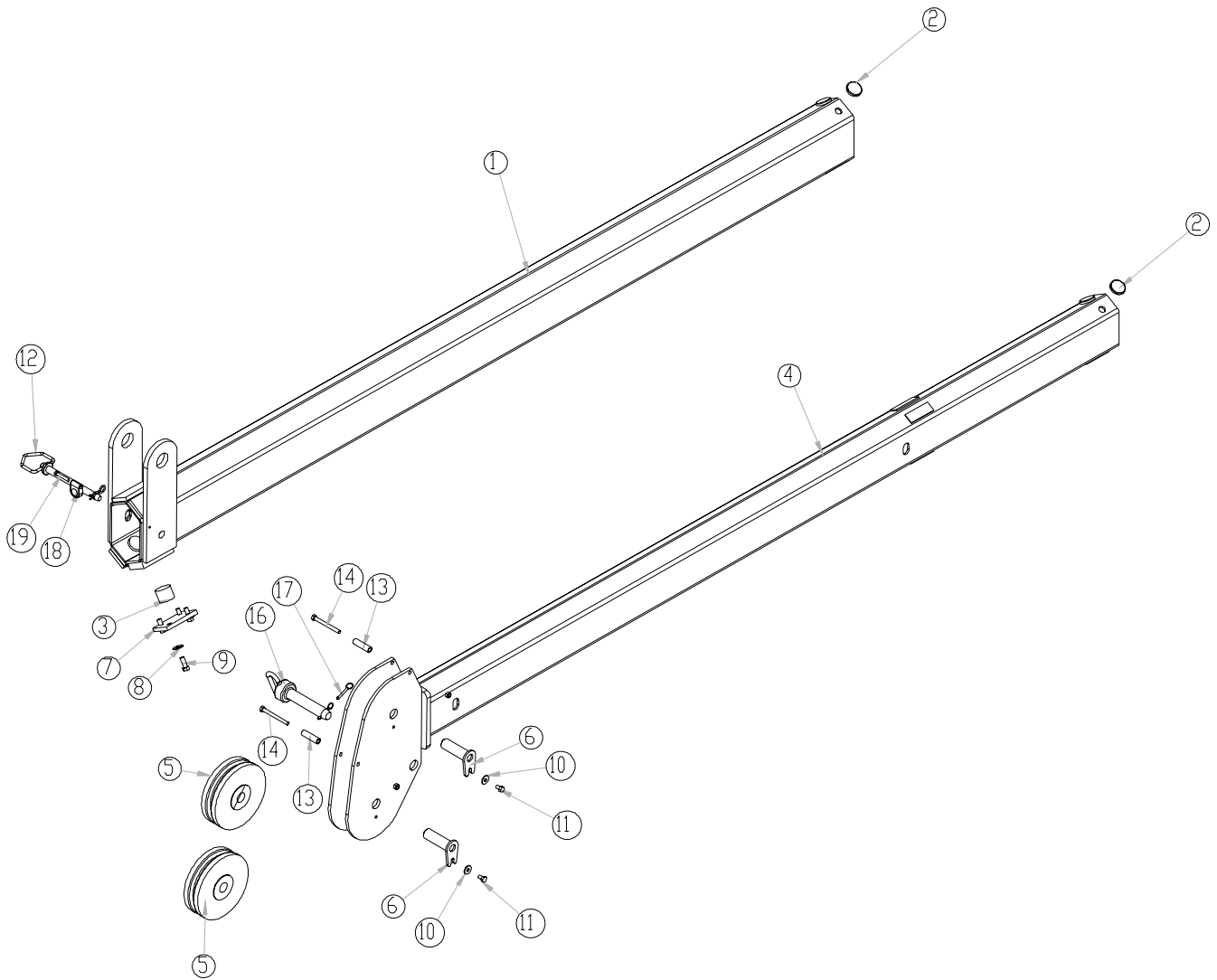
ITEM	PART	DESCRIPTION	QTY.	ITEM	PART	DESCRIPTION	QTY.
1	21530	MAST 5520C	1	8	0343	WASHER 0.31 FLAT	4
2	C5902	WASHER 0.63 FLAT GR8	12	9	0484	CAP SCR 0.31-18 X 0.50 HHGR5	4
3	C1026	CAP SCR 0.63-11X2.50 HHGR8 ZY	12	10	C0949	CAP SCR 0.38-16X3.00 HHGR5	3
4	12810	VB 4 SECT ELECT W/PROP VLV HYDAK	1	11	0346	WASHER 0.38 FLAT	3
5	11847	RADIO RECEIVER	1	12	0347	NUT 0.38-16 HH NYLOC	3
6	21810	BUSHING GSI-2426-12 1.50X0.75	4	13	24391	CAP SCR 6MMX25MM HHGR8	4
7	21812	GUARD VB 5520C	1				

MAIN BOOM ASSEMBLY P/N 21816



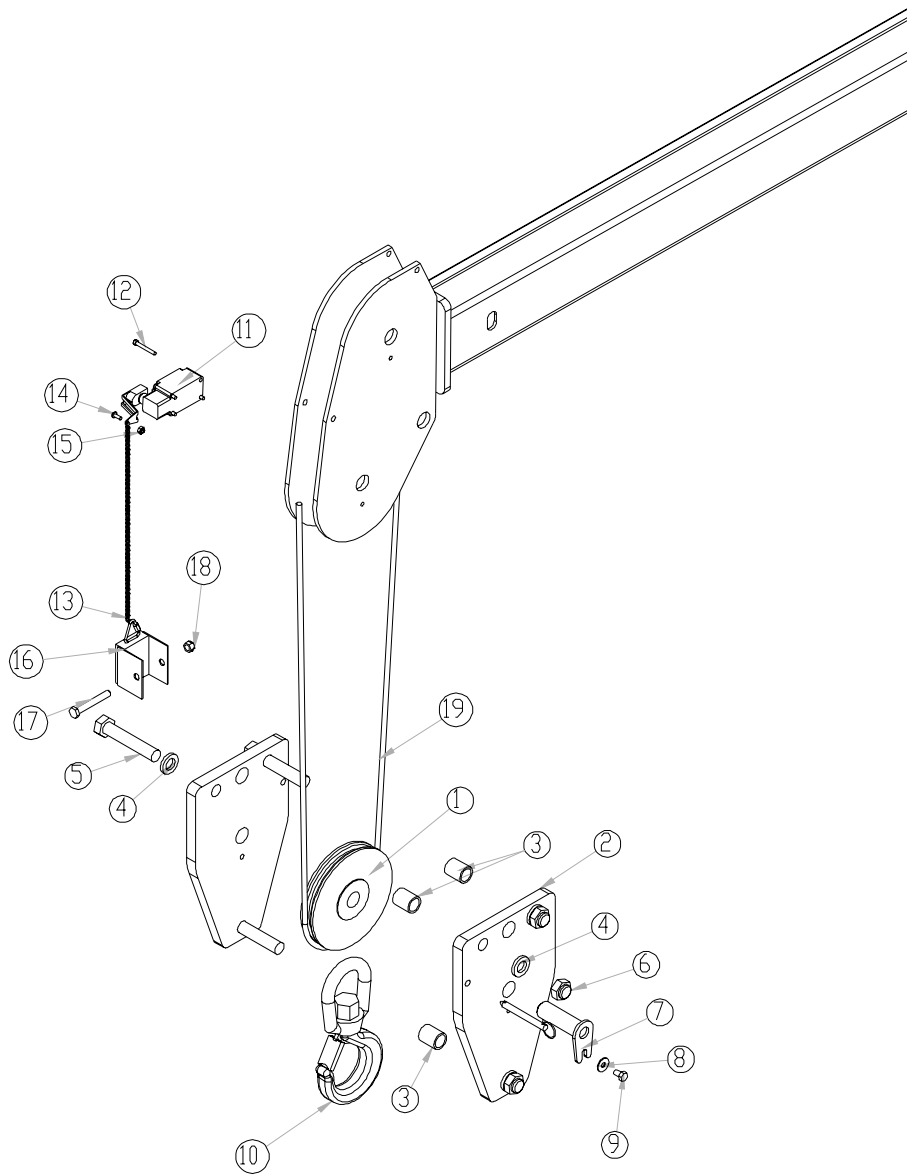
ITEM	PART	DESCRIPTION	QTY.	ITEM	PART	DESCRIPTION	QTY.
1	21516	INNER BOOM 5520C	1	21	21170	CAP SCR 0.31-18X1.00 HHGR8	8
2	13754	CYLINDER 3.50X21.00	1	22	16066	PIN 1.50X8.19 D&T	2
3	0067	BUSHING QSI-2426-24	7	23	9142	PIN CAP 0.56X2.50X.25	4
4	21528	WINCH 2500 5520 CRANE	1	24	D0790	WASHER 0.50 FLAT GR8	4
5	21536	WEAR PAD .1.19X1.50 RND	2	25	10172	CAP SCR 0.50-13X1.00 HHGR8 ZY	4
6	21538	CYLINDER 2.50 X 60.00	1	26	11544	CORD REEL 6620	1
7	3267	PLATE CYLINDER MTG	2	27	0478	CAP SCR 0.25-20X0.50 HHGR5	2
8	0279	FTG ADAPT 6-F5OLO-S	8	28	10547	PIN 1.50X6.88 D&T	1
9	15173	TUBE ASM 0.38X7.81 MAIN CYL 5520	2	29	16067	BUSHING QSI-2426-16	2
10	13080	MANIFOLD ASM 6620 INNER HOLDING	1	30	7403	PIN CAP 0.44X2.50X.252	4
11	15110	VALVE CHECK SINGLE W/ ORIFICE	1	31	21811	PIN 1.50X25 D&T	1
12	15111	FTG ADAPT MSTH/FSTH 6-4-F50G5	1	32	0337	HOSE CLAMP LN 4190 PP	2
13	12158	TUBE ASM 0.38X8.88 MAIN CYL 6620	1	33	0220	CAP SCR 0.25-20 X 1.50 HHGR5	2
14	13575	TUBE ASM 0.38X45.00 EXT CYL 5520	1	34	16154	Manifold Double T11A 3500 psi	1
15	14929	CLAMP 0.38 PORT TUBE	1	35	8622	CLAMP HOSE/TUBE AG-2	2
16	21809	PLATE 1ST EXT 3315 WEAR PAD	2	36	0343	WASHER 0.31 FLAT	2
17	C6353	WASHER 0.38 FLAT GR8	16	37	C0922	CAP SCR 0.31-18X1.00 HHGR5	2
18	13573	CAP SCR 0.38-16X1.00 HHGR8	8	38	19881	PLATE ANGLE INDICATOR 3315	2
19	9843	CAP SCR 0.38-16X0.75 HHGR8	8	39	0340	WASHER 0.25 FLAT	6
20	5591	WASHER 0.31 SAE FLAT YELLOW GR8	8	40	0333	NUT 0.25-20 HHGR5 NYLOC	2

EXTENSION BOOMS ASSEMBLY P/N 21517



ITEM	PART	DESCRIPTION	QTY.	ITEM	PART	DESCRIPTION	QTY.
1	21173	EXT BOOM 1ST 5520C	1	11	0484	CAP SCR 0.31-18 X 0.50 HHGR5	2
2	21537	WEAR PAD 0.25X1.50 RND	4	12	D1298	PIN HITCH 0.63X6.25	1
3	21536	WEAR PAD .1.19X1.50 RND	2	13	11936	SPACER BOOM TIP 3820	2
4	21165	EXT BOOM 2ND 5520C	1	14	12178	CAP SCR 0.31-18X3.25 HHGR5	2
5	11545	SHEAVE 6620 6.75 DIA .31R/1.94 THK	2	15	0342	NUT 0.31-18 HH NYLOC	2
6	9706	PIN TEAR DROP 1.00X3.25	2	16	12824	PIN HITCH 1.00X4.50	1
7	21809	PLATE 1ST EXT 3315 WEAR PAD	2	17	5753	PIN 0.19X1.56 LYNCH	1
8	C6353	WASHER 0.38 FLAT GR8	8	18	0337	HOSE CLAMP LN 4190 PP	2
9	13573	CAP SCR 0.38-16X1.00 HHGR8	8	19	0220	CAP SCR 0.25-20 X 1.50 HHGR5	2
10	0343	WASHER 0.31 FLAT	2				

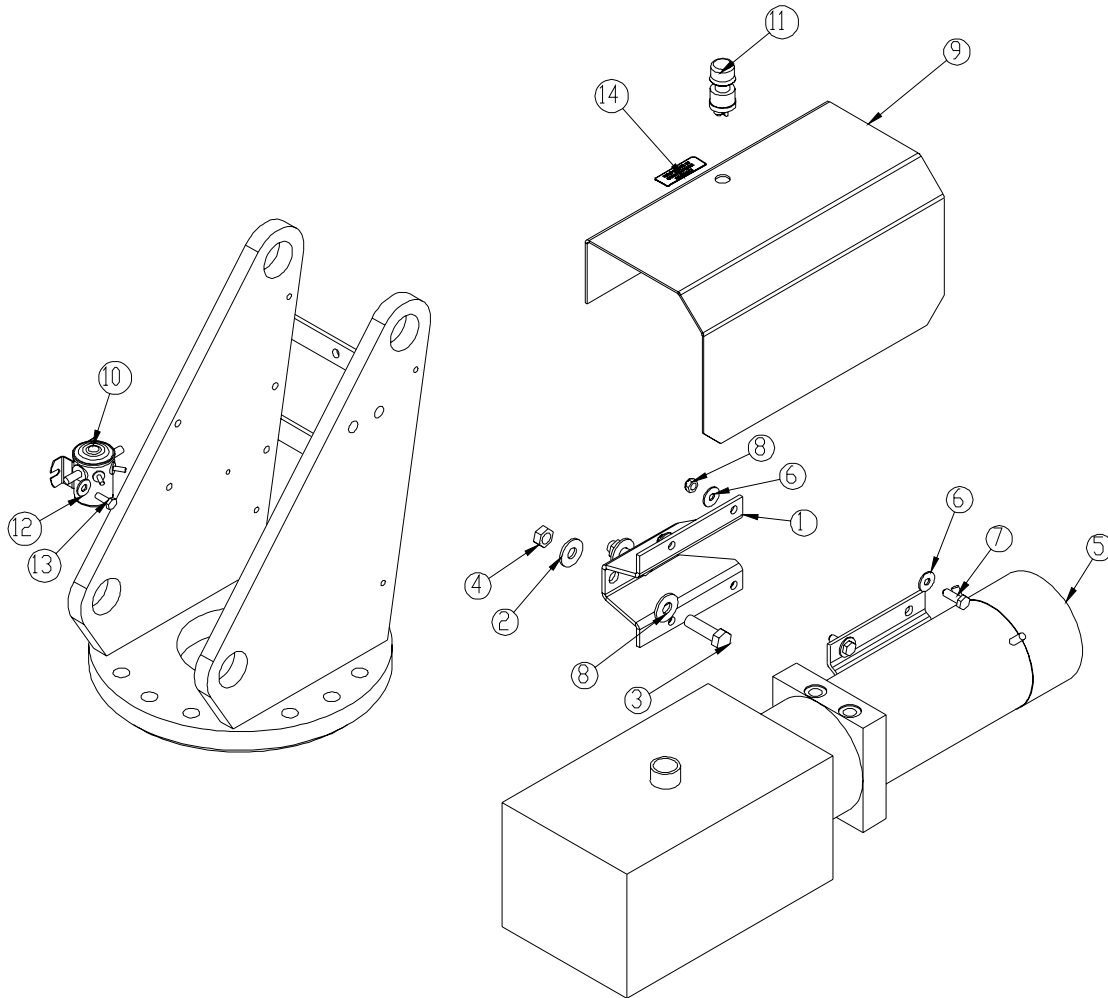
CABLE AND HOOK ASSEMBLY P/N 18228



ITEM	PART	DESCRIPTION	QTY.	ITEM	PART	DESCRIPTION	QTY.
1	11934	SHEAVE 6620 6.50 DIA .31R/1.12 THK	1	11	11938	SWITCH LIMIT A2B FURNAS 3SE3170	1
2	9676	PLATE 6620 SNATCH BLOCK	2	12	12177	CAP SCR #10-24 X 1.50 SHGR5	4
3	11666	SPACER 5520 SNATCH BLOCK	3	13	10972	CHAIN 0.105 (RM) 2607-21201	1
4	C6219	WASHER 0.75 SAE FLAT YELLOW GR8	6	14	D1711	CAP SCR #10-24X0.50 BTNHD SS	1
5	C6218	CAP SCR 0.75-10X4.00 HHGR8 ZY	3	15	C4956	NUT #10-24 HH NYLOC SS	1
6	C0538	NUT 0.75-10 HHGR8 NYLOC	3	16	19994	WEIGHT 3315 ATB	1
7	9706	PIN TEAR DROP 1.00X3.25	1	17	0530	CAP SCR 0.38-16X2.75 HHGR5	1
8	0343	WASHER 0.31 FLAT	1	18	0347	NUT 0.38-16 HH NYLOC	1
9	0484	CAP SCR 0.31-18 X 0.50 HHGR5	1	19	9610	WIRE ROPE 0.31 6X19 IWRC-XIP 90FT	1
10	3863	HOOK 5 TON	1	20	9263	PIN .38X3.00 QUICK RELEASE	1

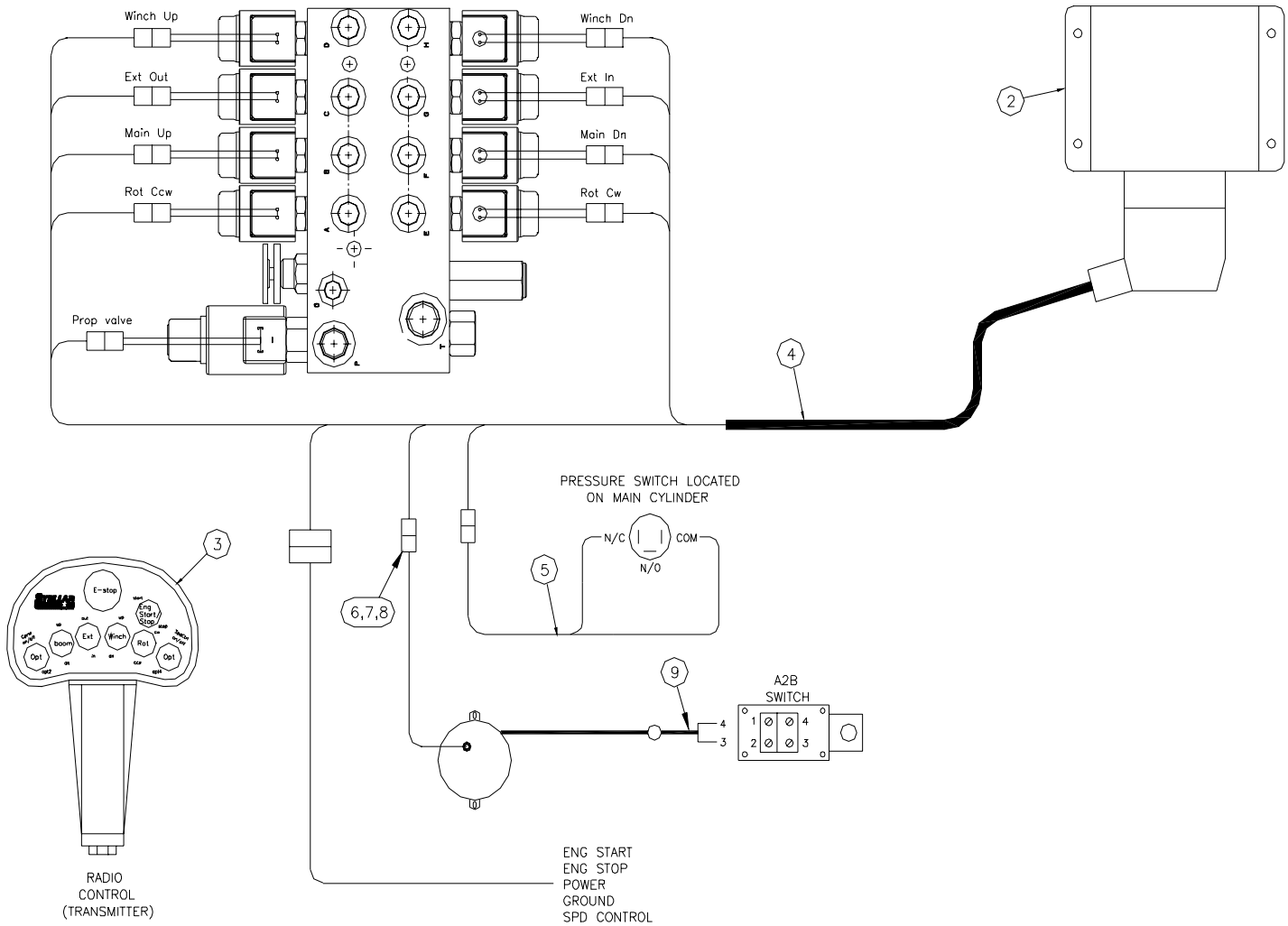
POWER UNIT ASSEMBLY – Electric Version Only

P/N 23913



ITEM	PART	DESCRIPTION	QTY.	ITEM	PART	DESCRIPTION	QTY.
1	17132	BRKT POWER UNIT 5520	1	8	0342	NUT 0.31-18 HH NYLOC	4
2	0352	WASHER 0.50 USS FLAT ZINC	4	9	19997	COVER POWER UNIT 5520	1
3	0500	CAP SCR 0.50-13X1.75 HHGR5	2	10	18468	SOLENOID 12V 200 AMP CONT 24143	1ref
4	C6106	NUT 0.50-13 HHGR5 NYLOC	2	11	17771	SWITCH PUSH BUTTON 9216-03	1ref
5	16994	POWER UNIT 12V 5520 HORZ	1	12	0340	WASHER 0.25 FLAT	1
6	0343	WASHER 0.31 FLAT	8	13	0479	CAP SCR 0.25-20X0.75 HHGR5	1
7	C0922	CAP SCR 0.31-18X1.00 HHGR5	4	14	18472	DECAL MANUAL OPERATION 5520	1

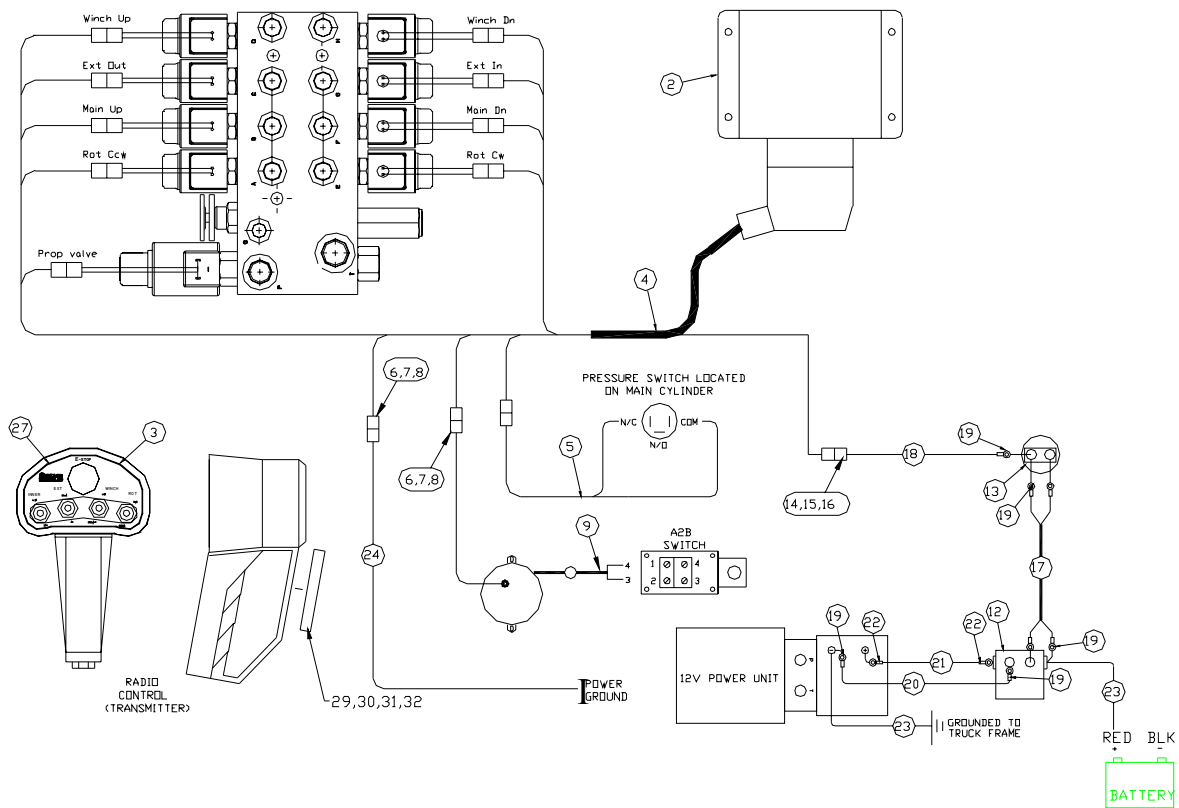
CONTROL KIT- Hydraulic Version P/N 14035



10	16255	BATTERY CHARGER W/BTRY 110-3.6V B&D	1
09	10965	CABLE GROMMET	1
08	9756	CONTACT M TERM SHROUD 18-20	2
07	8384	CABLE SEAL 18-20 PACKARD	2
06	9752	CONNECT 2 PIN SHROUD	1
05	13004	WIRE HARNESS PRESSURE SWITCH 6620	1
04	12134	WIRE HARNESS RADIO/VB	1
03	11834	TRANSMITTER - RADIO (PART OF 1)	REF
02	11847	RECEIVER - RADIO (PART OF 1)	REF
01	11835	RADIO CONTROLLER ASSEMBLY	1
ITEM	PART No.	DESCRIPTION	QTY

CONTROL KIT - Electric Version

P/N 18467



INSTALLATION INSTRUCTIONS

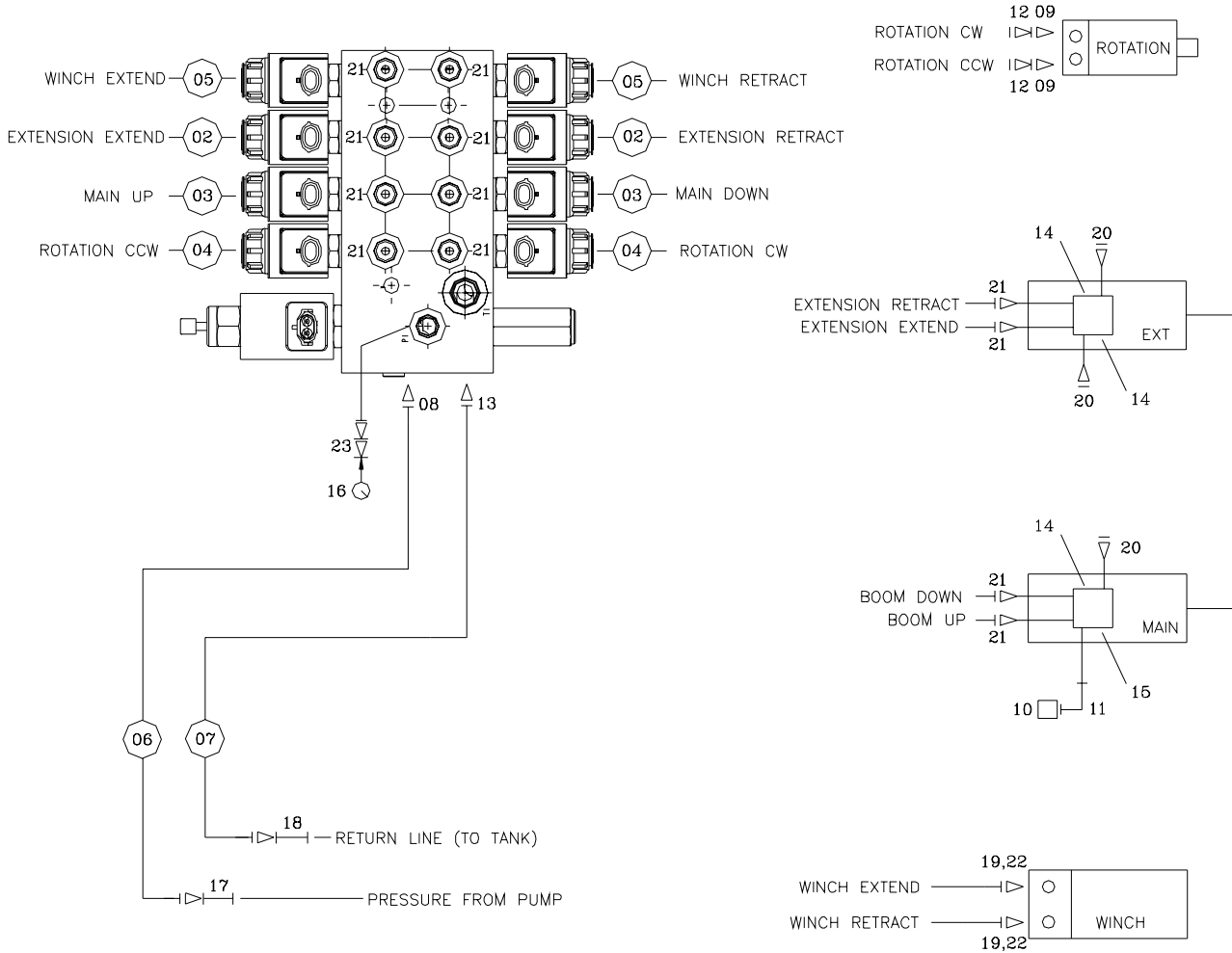
1. RUN #2 CABLE FROM BATTERY TERMINAL TO POSITIVE TERMINAL ON THE CRANE SOLENOID AND CRIMP AND USE 0.50 HEAT SHRINK ON #2X.38 COPPER TERMINAL.
2. RUN #2 CABLE FROM THE NEGATIVE TERMINAL TO THE TRUCK CHASSIS AND CRIMP AND USE 0.50 HEAT SHRINK ON #2X.38 COPPER TERMINAL.
3. RUN THE 14-2 WIRE WITH PACKARD CONNECTOR ON ONE END FROM THE TRUCK SOLENOID TO POWER CONNECTOR FOR THE CRANE AND CRIMP AND USE 0.19 HEAT SHRINK ON #8 X 14-16 TERMINAL.

ITEM	PART No.	DESCRIPTION	QTY	ITEM	PART No.	DESCRIPTION	QTY
01	11832	RADIO CONTROLLER ASM 4 FCTN	1	17	C6202	WIRE 14-2 PRIMARY BLK & RED	14"
02	11847	RECEIVER - RADIO (PART OF 1)	1ref	18	D0474	WIRE 14GA ORANGE	12"
03	11833	TRANSMITTER RADIO 4 FCTN (PART OF 1)	1ref	19	C5985	TERML #8 X 16-14 RING	7
04	17744	WIRE HARNESS 4 FCTN MECH CRANES	1	20	C4691	WIRE 14GA (RM) BLACK	10"
05	13004	WIRE HARNESS PRESSURE SWITCH 6620	1	21	17279	CABLE #2 WELDING	10"
06	9752	CONNECT 2 PIN SHROUD PACKARD	2	22	4070	TERML #2X.38 COPPER LUG	8
07	8394	CABLE SEAL 18-20 PACKARD	4	23	17279	CABLE #2 WELDING	40'
08	9756	CONTACT M TERM SHROUD 18-20	4	24	C6202	WIRE 14-2 PRIMARY BLK & RED	25'
09	10965	CABLE GROMMET	1	25	13561	HEAT SHRINK 0.19 BLACK 4.00L	2
10	18255	BATTERY CHARGER W/BTRY 110-3.6V	1	26	15218	HEAT SHRINK 0.50 BLK	2'
11	.	.	.	27	18469	DECAL CNTRL HANDLE HET4FCTN MECH	1
12	18468	SOLENOID 12V 200 AMP CONT	1	28	18472	DECAL MANUAL OPERATION 5520	1
13	17771	SWITCH PUSH BUTTON	1	29	0333	NUT 0.25-20 HHGR5 NYLDC	1
14	10978	CONTACT M TERM SHROUD 14-16 31034	1	30	C6021	CAP SCR 0.25-20X0.75 BTNHD SS	1
15	11359	CABLE SEAL 14-16 PACKARD	1	31	8832	DECAL MAGNET COVER-2.94DIA	1
16	12174	CONNECT 1 PIN TOWER PACKARD	1	32	6629	MAGNET 70# 2.80 DIA	1

NOTE: SHIP LOOSE ITEMS 23,25,26,22(6),19(2), AND 24 WITH PACKARD CONNECTOR ON ONE END

HYDRAULIC KIT- Hydraulic Version

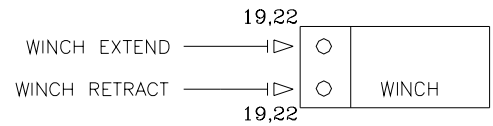
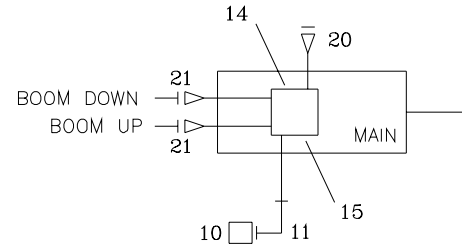
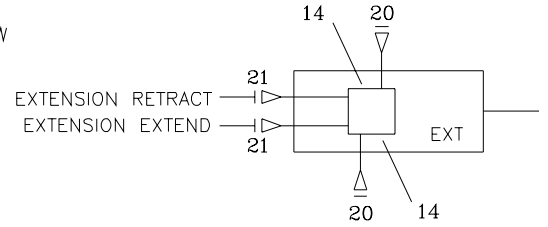
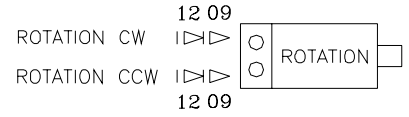
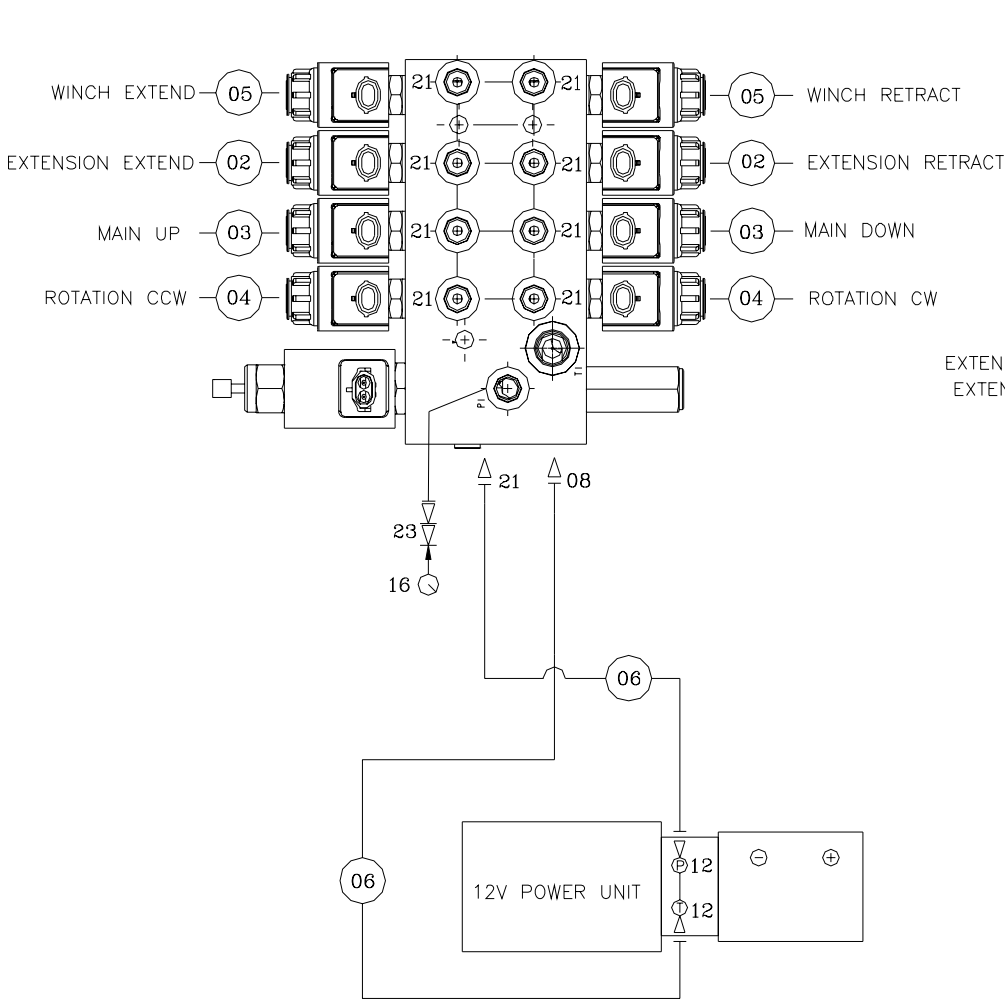
P/N 23901



ITEM	PART	DESCRIPTION	QTY.	ITEM	PART	DESCRIPTION	QTY.
1	23902	HOSE KIT 5520C	1	13	2246	FTG ADAPT 6-8 V5OLO-S	1
2	23904	HOSE 0.25 X 75	2ref	14	9803	VALVE C-BAL SUN CBBD-LJN-3500	ref
3	23903	HOSE 0.25 X 31	2ref	15	11991	VALVE C-BAL PLUG T11A XEOA-XXN	ref
4	23905	HOSE 0.25 X 45	2ref	16	6397	GAUGE OIL LF 2.5 0-5000 CBM	1
5	13438	HOSE 0.25 X 26	2ref	17	12171	FTG SWIVEL 0.38 FS/FS PS81JM.JM-6-6	1
6	23906	HOSE 0.38 X 8	1ref	18	12172	FTG SWIVEL 0.50 FS/FS PS81JM.JM-8-8	1
7	23907	HOSE 0.38 X 8	1ref	19	20060	FTG ADAPT MBSPF/FSTR 3/8-6 F4OHG5	1
8	D1193	FTG ADAPT 6-V5OLO-S	1	20	C4961	PLUG STR HOLLOW HEX 0.38 6-HP5ON	ref
9	C1111	FTG ADAPT MSTR/FSTR 10-6 F5OG5	2	21	C4922	FTG ADAPT 4-6 F5OLO-S	12
10	4587	SWITCH PRES OVERLD 744.6-S03R-3200N	1	22	0279	FTG ADAPT 6-F5OLO-S	2
11	3861	FTG ML FM O'RING 90 DEG	1	23	D1430	FTG ADAPT O'RING FMP 6-1/4 F50G-S	1
12	3338	FTG MF/MSTR 90 4-6 C5OLO-S	2				

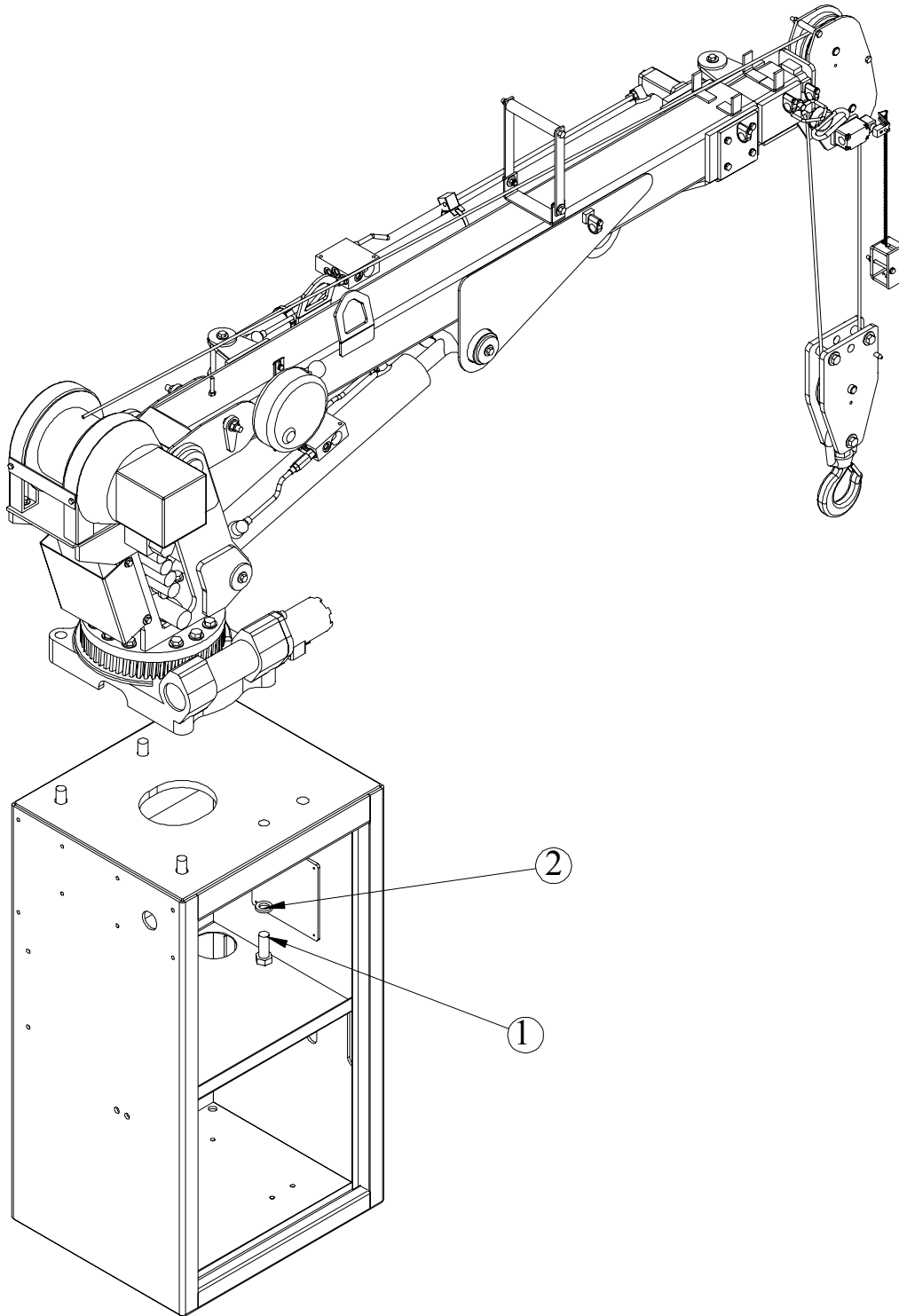
HYDRAULIC KIT- Electric Version

P/N 23898



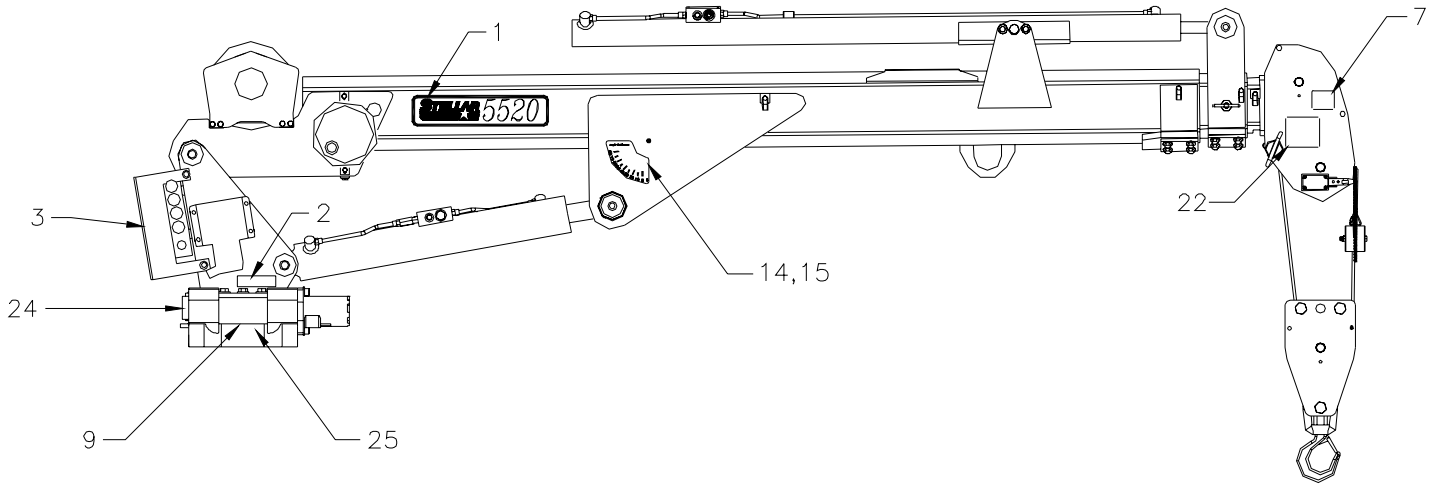
ITEM	PART	DESCRIPTION	QTY.	ITEM	PART	DESCRIPTION	QTY.
1	23914	HOSE KIT 5520C 12V	1	13	2246	FTG ADAPT 6-8 V5OLO-S	1
2	23904	HOSE 0.25 X 75	2ref	14	9803	VALVE C-BAL SUN CBBD-LJN-3500	ref
3	23903	HOSE 0.25 X 31	2ref	15	11991	VALVE C-BAL PLUG T11A XEOA-XXN	ref
4	23905	HOSE 0.25 X 45	2ref	16	6397	GAUGE OIL LF 2.5 0-5000 CBM	1
5	13438	HOSE 0.25 X 26	2ref	17	12171	FTG SWIVEL 0.38 FS/FS PS81JM/JM-6-6	1
6	13958	HOSE 0.25 X 23	2ref	18	12172	FTG SWIVEL 0.50 FS/FS PS81JM/JM-8-8	1
7				19	20060	FTG ADAPT MBSPP/FSTR 3/8-6 F4OHG5	1
8	12160	FTG ADAPT 4-8 F5OLO-S	1	20	C4961	PLUG STR HOLLOW HEX 0.38 6-HP5ON	ref
9	C1111	FTG ADAPT MSTR/FSTR 10-6 F5OG5	2	21	C4922	FTG ADAPT 4-6 F5OLO-S	13
10	4587	SWITCH PRES OVERLD 744.6-S03R-3200N	1	22	0279	FTG ADAPT 6-F5OLO-S	2
11	3861	FTG ML FM O'RING 90 DEG	1	23	D1430	FTG ADAPT O'RING FMP 6-1/4 F5OG-S	1
12	3338	FTG MF/MSTR 90 4-6 C5OLO-S	4				

INSTALLATION KIT P/N 17689



ITEM NO.	PART NO.	DESCRIPTION	QTY.
1	17688	CAP SCR 0.88-9X2.25 HHGR8 ZY	4
2	8648	WASHER 0.88 SAE FLAT YELLOW GR8	4

DECAL KIT P/N 23909



25	15171	DECAL GREASE WORM DRIVE BEARINGS	1
24	4188	DECAL-ROTATION ALIGNMENT	1
*23	C4541	DECAL-CRANE STOWING	1
22	12300	DECAL-TWO BLOCKING	1
*21	4214	DECAL-SERVICE	1
*20	C0568	DECAL-DIESEL	2
*19	12452	DECAL MANUAL EXT	1
*18	C5911	DECAL-STELLAR 2x4.5	3
*17	C5910	DECAL-STELLAR 4x9.5	1
*16	12451	DECAL HOISTING PERSONNEL	1
15	13819	DECAL-ANGLE INDICATOR SS	1
14	13820	DECAL ANGLE INDICATOR CS	1
*13	C1179	DECAL-ELECTROCUTION 4.5x7.5	2
*12	C5918	DECAL-DANGER MOVING O.R.	2
*11	C4795	DECAL-DANGER O.R.	2
*10	4190	DECAL-DANGER	1
09	9188	DECAL-ROTATE/GREASE	1
*08	4189	DECAL-DANGER	1
07	4186	DECAL-ELECTROCUTION 2x2.75	1
*06	C4544	DECAL-DANGER	1
*05	C4540	DECAL-DANGER	1
*04	C4545	DECAL-ELECTROCUTION 5x13	4
*03	13768	DECAL CAPACITY	2
02	15172	DECAL ASME/ANSI B30.22/B30.5	1
01	23910	DECAL IDENTIFICATION CS	2
ITEM	PART No.	DESCRIPTION	QTY

*USE THESE DECALS WITH BODY PACKAGE

STABILITY PROCEDURE

Definition of **STABILITY** for the Stellar Telescopic Crane Products:

A truck is stable until the load cannot be lifted off the ground with the winch, without tipping over the truck.

Every Stellar crane installed must be tested for stability to determine the actual load capacity of the final truck package. The actual test data must be recorded and supplied with the truck at the time of in-service and should be kept with the truck at all times. The following procedure will test the truck package for stability and will provide a stability capacity chart. The load limit information shown on the stability capacity chart is formulated on 85% of tipping.

Set Up

- Locate the truck on a test course in position for loading and engage travel brakes.
- Set outriggers so that they make contact with firm, level footings.
- Operate the crane under partial load to assure operator proficiency and proper machine function.

Test Data for 5520 Crane

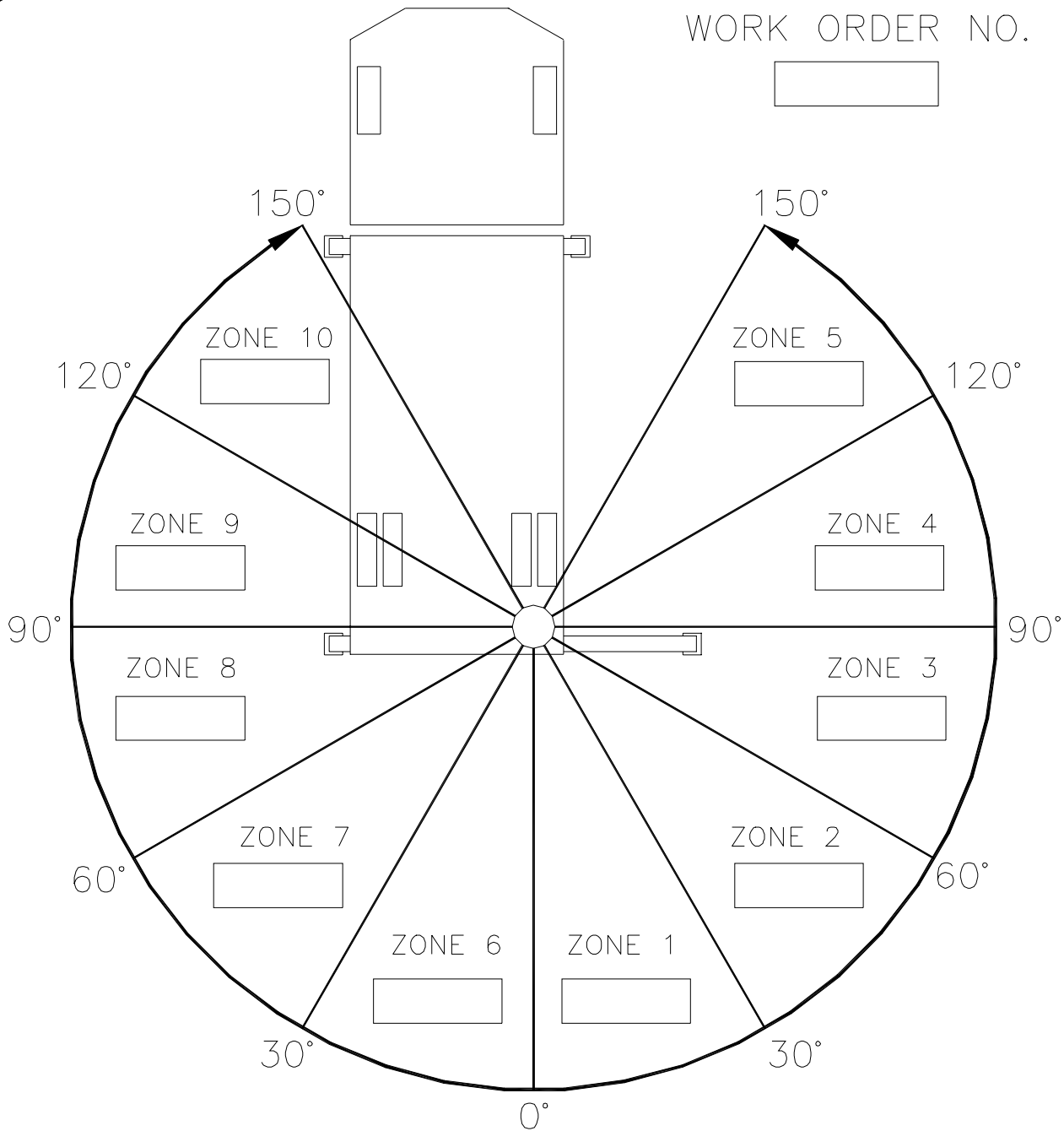
- Maximum Horizontal Reach – 240 inches (center of rotation to boom tip)
- Stability Test Weight – 1475#

Test Procedure

- Rotate the crane into zone 1 position.
- With the crane fully retracted and the boom horizontal, winch the test weight off the ground. Note: keep the weight within six inches of the ground at all times.
- Extend the boom outward until full extension has been reached or until the truck becomes unstable (again, use the winch to keep the weight within six inches of the ground).
- If the boom goes full extension without becoming unstable, the crane is termed stable for this zone and 100% can be written in the zone 1 data box.
- If the truck becomes unstable prior to going full extension - retract the boom until the truck becomes stable and measure the horizontal reach in this position (center of rotation to boom tip). This is the stable horizontal reach for this zone. Use the following formula to determine the percentage of rated capacity.
Stable horizontal reach divided by Maximum horizontal reach multiplied by 100 equals the percentage of rated capacity for this zone. Record this number in the data box for zone 1. This is the revised capacity due to stability for this zone.
- Repeat this procedure for each zone until the worksheet is completed.
- This is the revised CAPACITY based on STABILITY of this package.

STABILITY CHART

WORK ORDER NO.



BOXES TO BE FILLED IN WITH PERCENTAGE OF RATED CAPACITY IN THE APPROPRIATE REGION.

STABILITY CAPACITY CHART

STABILITY is based on this specific truck package.

Limited Warranty Statement

for Stellar Tire Service Trucks, Truck-mounted Cranes, Truck-mounted Stellarc Welders & Truck-mounted Compressed Air Systems ONLY

Stellar Industries, Inc. (Stellar) warrants products designed and manufactured by Stellar to be free from defects in material and workmanship under proper use and maintenance. Products must be installed and operated in accordance with Stellar's written instructions and stated lifting capacities. The warranty period shall be Twelve (12) month warranty on all Stellar designed and fabricated parts, and Ninety (90) days repair labor.

The warranty period shall begin from the date recorded by Stellar as the in-service date. This date will be derived from the completed warranty registration card. In the event a warranty registration card is not received by Stellar, the factory ship date will be used. Stellar's obligation under this warranty is limited to, and the sole remedy for any such defect shall be, the repair and/or replacement (at Stellar's option) of the part and/or component in question. Stellar after-sales service personnel must be notified by telephone, fax, e-mail, or mail of any warranty-applicable damage within fourteen (14) days of its occurrence. If at all possible, Stellar will ship the replacement part within 24-hours of notification by the most economical, yet expedient, means possible. Expedited freight delivery will be at the expense of the owner.

Warranty claims must be submitted and shall be processed in accordance with Stellar's established warranty claim procedure. Stellar Service personnel must be contacted prior to any warranty claim. A return materials authorization (RMA) account number must be issued to the claiming party prior to the return of any warranty parts. Parts returned without prior authorization will not be recognized for warranty consideration. All damaged parts must be returned to Stellar freight prepaid; freight collect returns will be refused.

Warranty service will be performed by any Stellar new equipment distributor, or by any Stellar-recognized service center authorized to service the type of product involved, or at the Stellar factory. At the time of requesting warranty service, the owner must present evidence of date of delivery of the product. The owner shall be obligated to pay for any overtime labor requested of the servicing company by the owner, any field service call charges, and any towing and/or transportation charges associated with moving the equipment to the designated repair/service provider.

All obligations of Stellar and its authorized dealers and service providers shall be voided if someone other than an authorized Stellar dealer provides other than routine maintenance service without prior written approval from Stellar. In the case repair work is performed on the Stellar-manufactured product, original Stellar parts must be used to keep the warranty in force. The warranty may also be voided if the product is modified or altered in any way not approved, in writing, by Stellar engineering. The owner/operator is responsible for furnishing proof of the date of original purchase of the Stellar product in question.

Warranty registration is the ultimate responsibility of the owner and may be accomplished by the completion and return of the Stellar product registration card provided with the product. If the owner is unsure of registration, he is encouraged to contact Stellar at the address below to confirm registration of the product in question. This warranty covers only defective material and workmanship. It does not cover depreciation or damage caused by normal wear and tear, accident, mishap, untrained operators, or improper or unintended use. The owner has the obligation of performing routine care and maintenance duties as stated in Stellar's written instructions, recommendations, and specifications. Any damage resulting from owner/operator failure to perform such duties shall void the coverage of this warranty. The cost of labor and supplies associated with routine maintenance will be paid by the owner.

The only remedies the owner has in connection with the breach or performance of any warranty on the Stellar product specified are those set above. In no event will Stellar, the Stellar distributor/dealer, or any company affiliated with Stellar be liable for business interruptions, costs of delay, or for any special, indirect, incidental, or consequential costs or damages. Such costs may include, but are not limited to, loss of time, loss of revenue, loss of use, wages, salaries, commissions, lodging, meals, towing, hydraulic fluid, or any other incidental cost.

All products purchased by Stellar from outside vendors shall be covered by the warranty offered by that respective manufacturer only. Stellar does not participate in, or obligate itself to, any such warranty.

Hydraulic cylinders used in Stellar products are subject to the same warranty provisions stated above. Should a cylinder defect develop within the above stated warranty period, notify Stellar immediately. Stellar will ship, freight prepaid, by the most effective, expedient, means a new or re-manufactured cylinder of the same size and type. An authorization for return of the original part will be issued at the time the order is placed. The defective cylinder is to be returned to Stellar freight prepaid by the owner. Cylinders returned freight collect will be refused. Should the defective cylinder not be returned within 30 days of shipping the replacement cylinder, the owner is responsible to pay Stellar the full purchase price of the replacement part.

Stellar reserves the right to make changes in design or improvement upon its products without imposing upon itself the same upon its products theretofore manufactured.

This warranty will apply to all Stellar Tire Service Trucks, Truck-mounted Cranes, Truck-mounted Stellarc Welders & Truck-mounted Compressed Air Systems shipped from Stellar's factory after January 1, 1997. The warranty is for the use of the original owner only and is not transferable without prior written permission from Stellar.

THIS WARRANTY IS EXPRESSLY IN LIEU OF ANY OTHER WARRANTIES, EXPRESS OR IMPLIED, INCLUDING ANY WARRANTY OF MERCHANTABILITY OR FITNESS FOR A PARTICULAR PURPOSE. REMEDIES UNDER THIS WARRANTY ARE LIMITED TO THE PROVISION OF MATERIAL AND SERVICES, AS SPECIFIED HEREIN. STELLAR INDUSTRIES, INC. IS NOT RESPONSIBLE FOR INCIDENTAL OR CONSEQUENTIAL DAMAGES.

Stellar Industries, Inc. • 280 West Third Street • Garner, Iowa 50438 • U.S.A.

E-Mail • sales@stellar-industries.com

Telephone: 800/321-3741; 641/923-3741 • Fax: 641/923-2812; 641/923-2811

REVISED 10/05/2000