

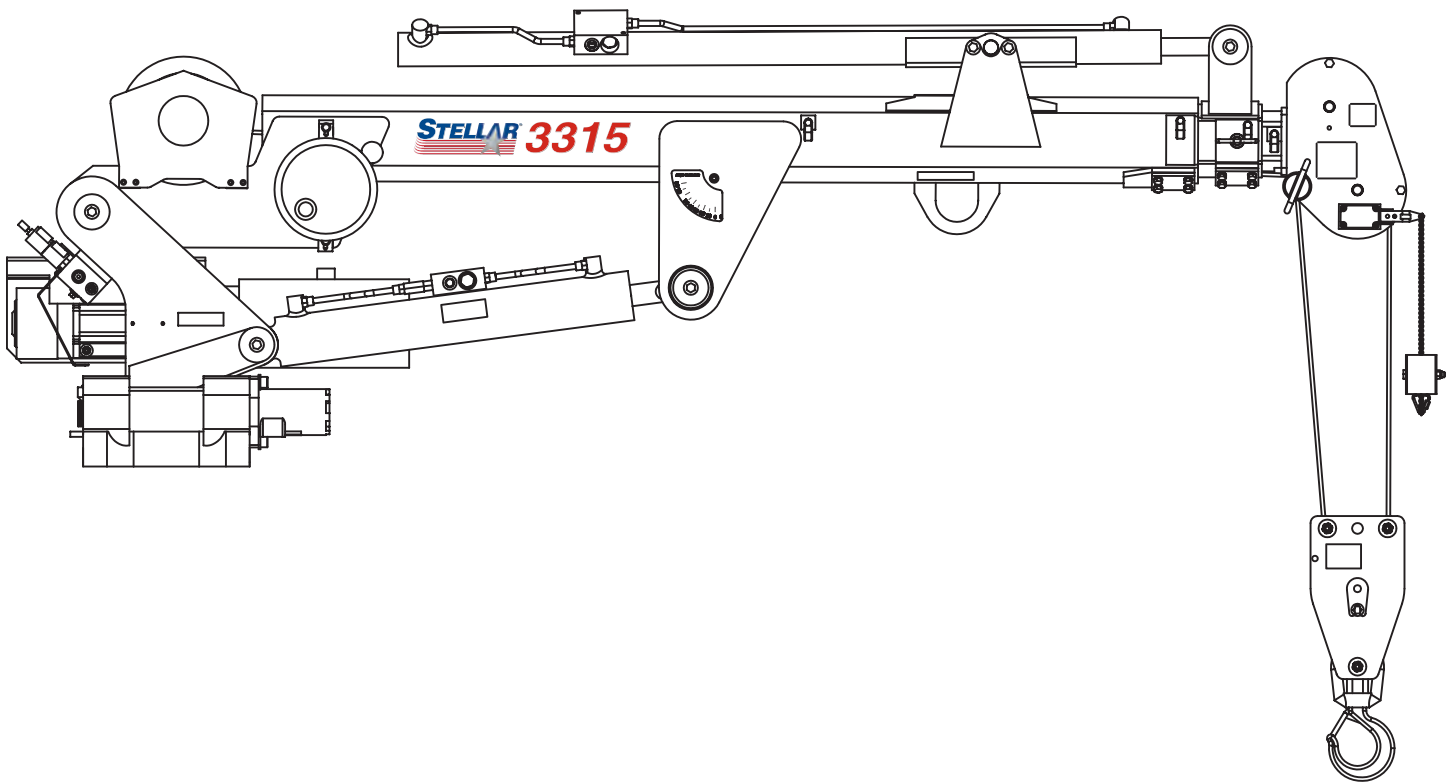


MODEL 3315

TELESCOPIC CRANE

OWNERS' MANUAL

Installation • Assembly Drawings • Parts



Stellar Industries, Inc.

190 State Street

PO Box 169

Garner, IA 50438

800-321-3741

Fax: 641-923-2811

www.stellarindustries.com

Subject to Change without Notification.
© 2013 Stellar Industries, Inc.

Last Revision: 05/29/13

3315 Manual Revisions

Date of Revision	Section Revised	Description of Revision

Table of Contents

Chapter 1 - Specifications	1
Capacity Chart - Decal PN 20424	2
Chapter 2 - Installation.....	3
Installation Overview.....	4
Control Kit (Electrical Version) - PN 44737.....	5
Control Kit (Hydraulic Version) - PN 44739	6
Control Kit (Electrical Version Cradle A2B) - PN 48112.....	7
Control Kit (Hydraulic Version Cradle A2B) - PN 48113	8
Control Kit (CDT™ Version) - PN 60235.....	9
Wiring Diagram (Electrical Version)	10
Hydraulic Kit (Electrical Version) - PN 20433.....	11
Hydraulic Kit (Hydraulic Version) - PN 23181	12
Hydraulic Kit (Proportional Version) - PN 50604.....	13
Hydraulic Kit (CDT™ Version) - PN 60234	14
Valve Bank (Standard Hydraulic Version) - PN 50591	15
Valve Bank (Proportional Version) - PN 50592.....	16
Hydraulic Installation.....	17
Hydraulic System	18
Stability Procedure	19
Stability Capacity Chart.....	20
Decal Kit Placement - PN 21162.....	21
Chapter 3 - Assembly Drawings	23
Base Assembly - PN 19998.....	23
Base Assembly (315 Degree Rotation) - PN 29336	24
Mast Assembly - PN 44647.....	25
Mast Assembly (Proportional Version) - PN 50596	26
Mast Assembly (CDT™ Version) - PN 60034.....	27
Power Unit Assembly (Electric Version Only) - PN 20432.....	28
Main Boom Assembly - PN 20000	29
Main Boom Assembly (CDT™ Version) - PN 60039	30
Extension Boom Assembly - PN 20001	31
Extension Boom Assembly (Optional) - PN 36296.....	32
Main Cylinder Assembly - PN 25676.....	33
Main Cylinder Assembly - (CDT™ Version) - PN 60040.....	34
Extension Cylinder Assembly - PN 25677	35
Cable & Hook Assembly - PN 20002	36
Basket Cable & Hook Assembly (Optional) - PN 41070.....	37
Radio Transmitter Assembly.....	38
Chapter 4 - Replacement Parts	39

Find a Dealer Near You:

<http://www.stellarindustries.com/pages/dist/distsearch.htm>

**For Technical Questions, Information, Parts, or Warranty, Call Toll-Free at
800-321-3741**

Hours: Monday - Friday, 8:00 a.m. - 5:00 p.m. CST

Or email at the following addresses:

Technical Questions, and Information
Order Parts
Warranty Information

service@stellarindustries.com
parts@stellarindustries.com
warranty@stellarindustries.com

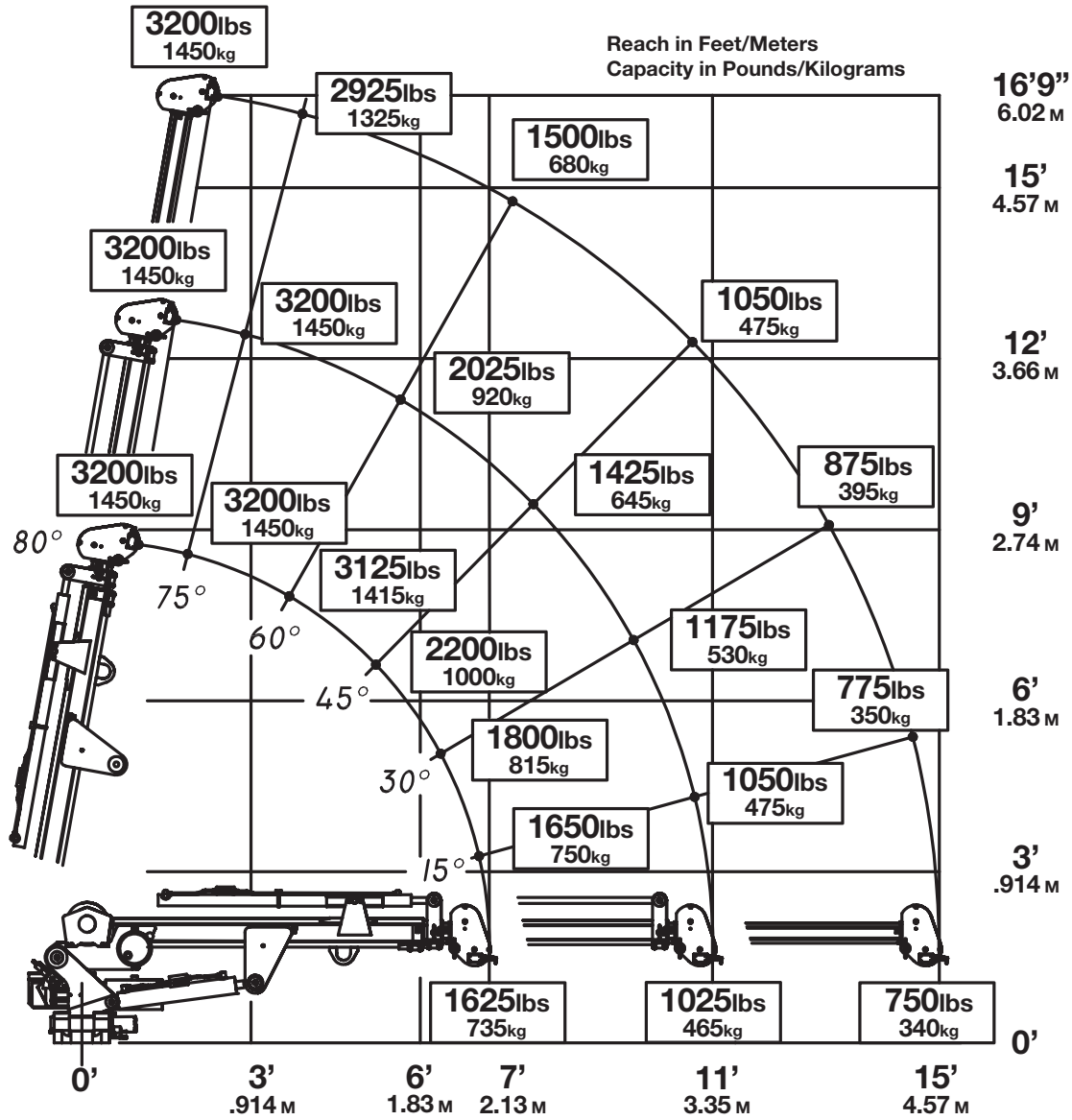
Chapter 1 - Specifications

Model 3315 Crane SPECIFICATION SHEET

Crane Rating:	11,500 ft-lb (1.59 ton-meters)
Standard Boom Length:	7' (2.13 m) from CL of Crane
Boom Extension:	1st stage: Hydraulic 48" (121.9 cm) 2nd stage: Manual 48" (121.9 cm)
Maximum Horizontal Reach:	15' (4.57 m) from CL of Crane
Maximum Vertical Lift: (from crane base)	16' 9" (5.11 m)
Boom Elevation:	-5 to +80 degrees
Stowed Height: (crane only)	32.5" (82.6 cm)
Mounting Space Required:	18" x 15" (45.7 x 38.1 cm)
Approximate Crane Weight:	800 lbs (360 kg)
Controls:	20' (6.1 m) cord with hand held control.
Winch Specifications	
Rope Diameter:	1/4" (.64 cm)
Line pull speed:	30 ft/min (9.1 m/min)
Max. single part line:	1600 lbs (725 kg)
Max. double part line:	3200 lbs (1450 kg)
Rotation: (worm gear)	370 degree power
Lifting Capacities:	1625 lbs @ 7' (737 kg @ 2.1 m) 750 lbs @ 15' (340 kg @ 4.6 m)
Power Supply Required:	PTO & Pump (3.0 gpm @ 2300 psi) (11.35 lpm & 159 bar)
	12 volt power unit (2.0 gpm @ 2300 psi) (7.57 lpm @ 159 bar)

*Subject to change without notification

Capacity Chart - Decal PN 20424



Weight of load handling devices are part of the load lifted and must be deducted from the capacity.

Maximum 1 - part line capacity is 1600lbs (725kg). For greater loads, use 2 - part line.



Chapter 2 - Installation

Notice: Read this Page Before Installation of the Crane

General Installation

This chapter is designed to serve as a general guide for the installation of a Stellar 3315 Telescopic Crane on a Stellar Service Body. Each installation is considered unique so certain portions of this chapter may or may not apply to your direct application. If a question should arise during the installation process, please contact Stellar Customer Service at (800) 321 3741.

This crane is designed for use with a Stellar Service Body installed on a vehicle that meets the minimum chassis requirements of the crane. It is the installer's responsibility to assure that the crane is mounted on a platform that will support the maximum crane rating of this crane.

Notice:

PTO and Pump installation instructions are provided by the corresponding manufacturers. For more information on which PTO and Pump fit your application, please contact your local Stellar Distributor or Stellar Customer Service.

Important: When installing welder units to the service bodies, it is highly recommended that a surge protector is installed on the chassis batteries to protect the crane radio receiver, wiring and other electronic devices from an unexpected electrical spike or surge. Failure to do so could result in extensive damage to the service body and crane electrical circuit.

Installation Notice

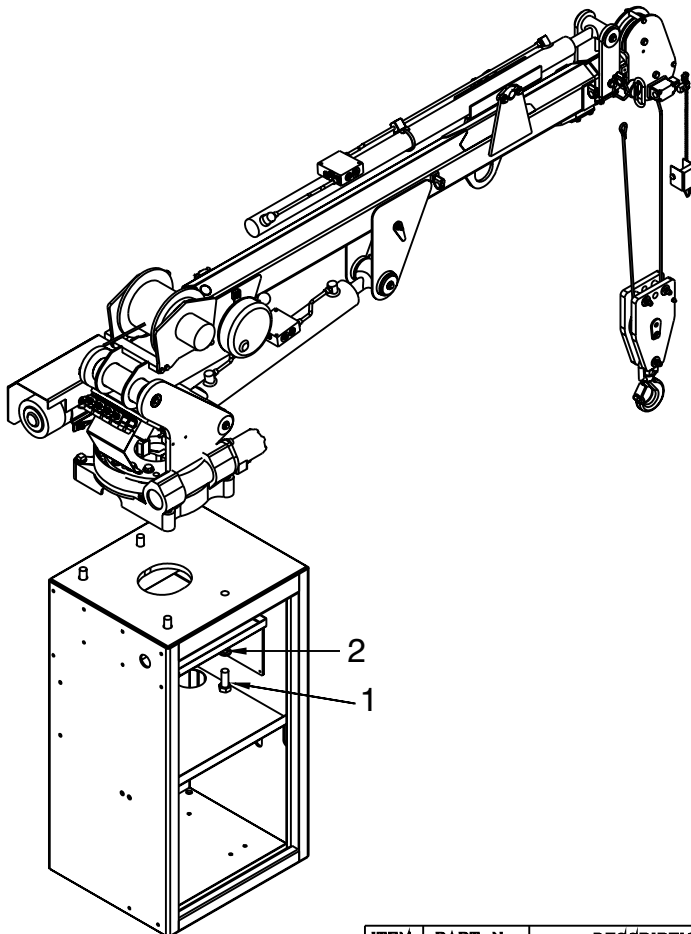
According to Federal Law (49 cfr part 571), each final-stage manufacturer shall complete the vehicle in such a manner that it conforms to the standards in effect on the date of manufacture of the incomplete vehicle, the date of final completion, or a date between those two dates. This requirement shall, however, be superseded by any conflicting provisions of a standard that applies by its terms to vehicles manufactured in two or more stages.

Therefore, the installer of Stellar cranes and bodies is considered one of the manufacturers of the vehicle. As such a manufacturer, the installer is responsible for compliance with all applicable federal and state regulations. They are required to certify that the vehicle is in compliance with the Federal Motor Vehicle Safety Standards and other regulations issued under the National Traffic and Motor Vehicle Safety Act.

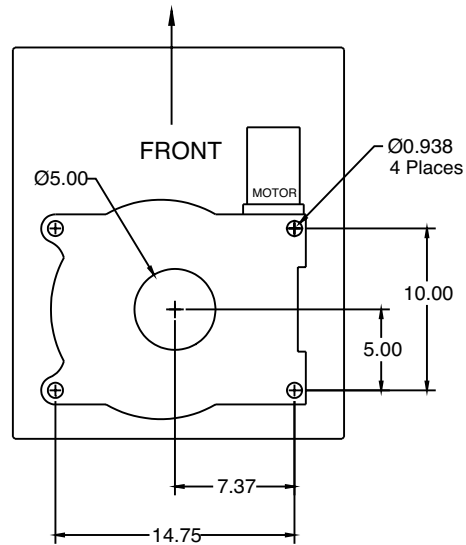
Please reference the Code of Federal Regulations, title 49 - Transportation, Volume 5 (400-999), for further information, or visit <http://www.gpoaccess.gov/nara/index.html> for the full text of Code of Federal Regulations.

Installation Overview

1. Determine that the mounting location for the 3315 crane is at least 18" x 15" (45.7 x 38.1 cm).
2. Use the detail below to drill .938" diameter holes into the mounting plate. Run tap on the threads of the base to be sure they are clean.
3. Use a crane or lifting device capable of lifting the weight of the Stellar crane. The Stellar 3315 weighs approximately 800 lbs (360 kg). **Note: cranes are shipped with rotation positioned at 180 degrees from normal stowed travel position (See photo above).** This will allow for easy installation of the crane and permanent connection of all hydraulic and electrical components prior to repositioning into the crane saddle.
4. Connect straps or chain from the lifting device to the lifting rings on the Stellar 3315.
5. Use four (4) 7/8 x 2 1/4 #8 bolts and four (4) #8 flat washers.
6. Install a washer on each bolt.
7. Apply Loctite Thread locker #277 to the bolts.
8. Using the lifting device, lower the Stellar 3315 just above the crane compartment and start the bolts. Have someone assist in leveling the crane. **Note: the rotation motor should be to the door side of crane compartment and the boom should be extended back over the rear bumper.**
9. Secure the crane using the mounting hardware provided. **Note: longer or shorter cap screws may be required – recommended thread engagement into crane base is 1.00" – use grade 8, zinc plated cap screws only.**
10. Torque the cap screws to 454 ft-lbs.
11. Remove supporting crane.
12. Hook-up hydraulics and electrical using the schematics provided in this chapter. **Note: If questions should arise during any portion of this installation, please contact Stellar Customer Service at (800) 321-3741.**



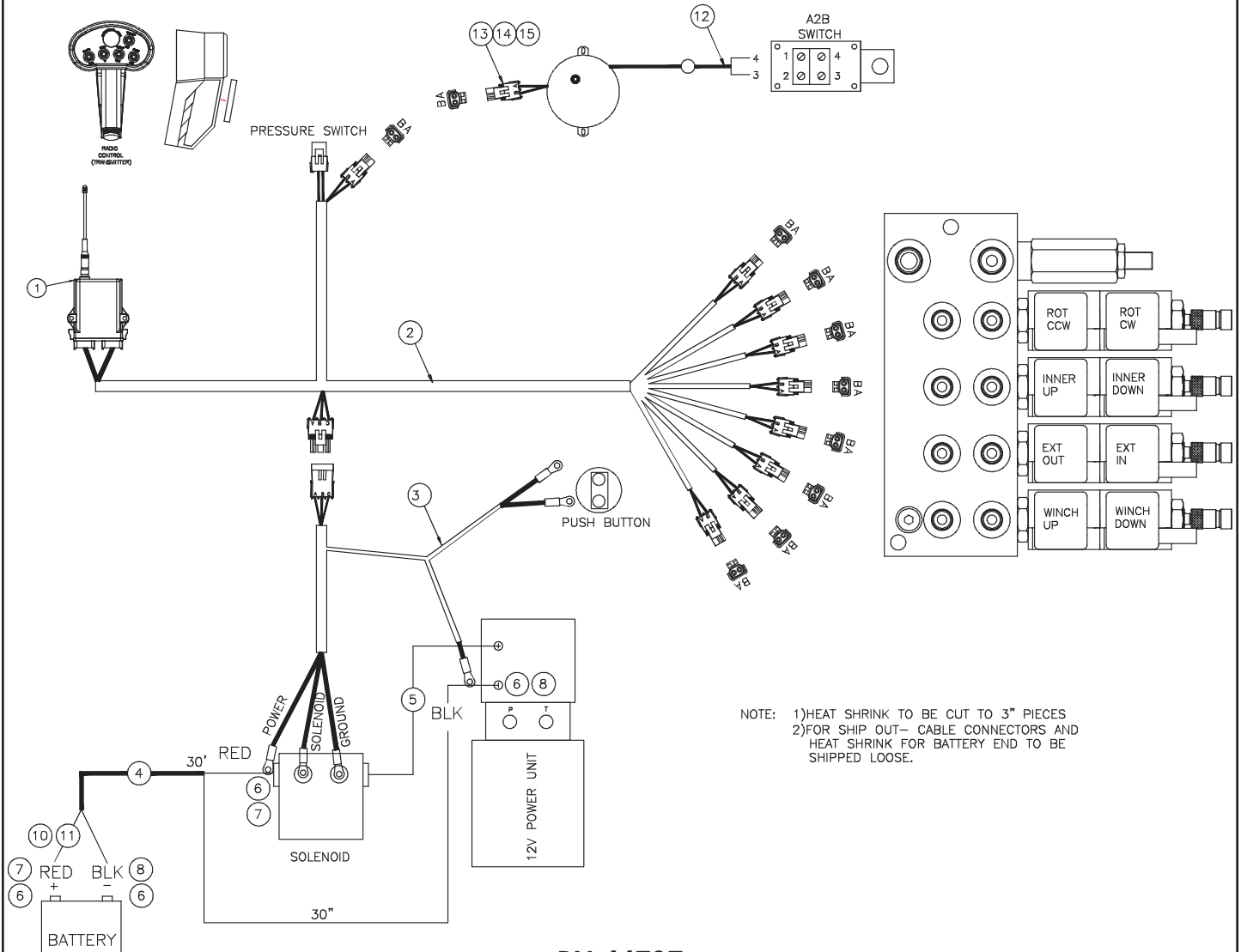
WARNING!
 The use of this crane on a body not capable of handling the loads imposed on it may result in serious injury or death.



Hole Mounting Detail

ITEM	PART No.	DESCRIPTION	QTY
01	17688	CAP SCR 0.88-9x2.25 HHGR8	4
02	8648	WASHER 0.88 SAE GR8	4

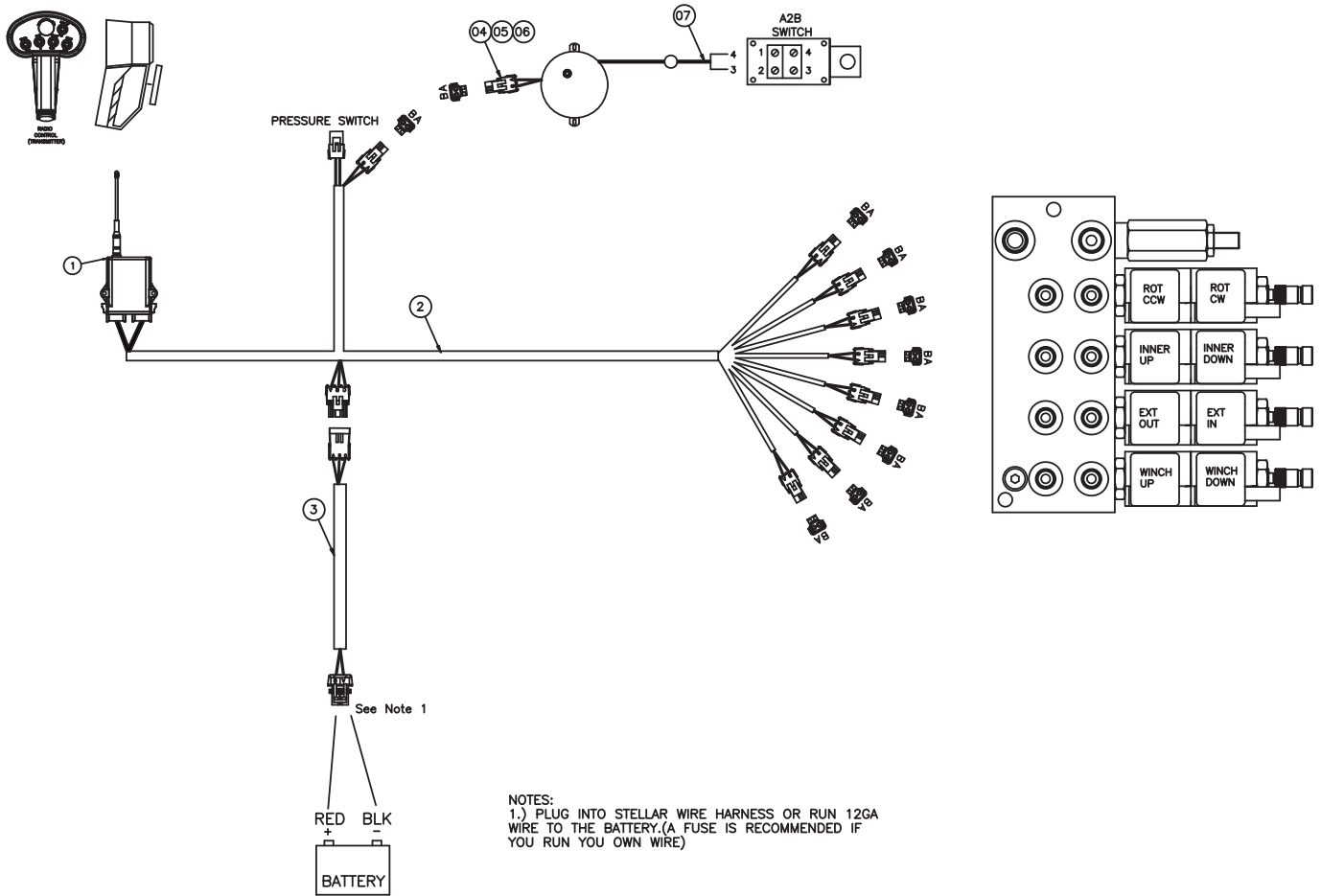
Control Kit (Electrical Version) - PN 44737



PN 44737

15	9756	CONTACT M TERM SHROUD 18-20	2
14	8384	CABLE SEAL 18-20 PACKARD 39000	2
13	9752	CONNECT 2 PIN SHROUD PACKARD	1
12	10965	STRAIN RELIEF .50 NPT .20-.35 CABLE	1
11	36435	FUSE 200 AMP 46274	2
10	32523	FUSE HOLDER 46039	2
09	18472	DECAL MANUAL OPERATION 5520	1
08	15218	HEAT SHRINK 0.50 BLK (RM) 22241	6"
07	15219	HEAT SHRINK 0.50 RED (RM) 22241	6"
06	4466	TERML #1X.38 COPPER LUG	4
05	59518	WIRE HARNESS BATTERY CABLE	1
04	20466	CABLE #2 2 WIRE	32.5'
03	25887	WIRE HARNESS 3315 ELECTRIC	1
02	50923	WIRE HARNESS 3315 H2	1
01	39784	HANDLE ASSEMBLY	1
ITEM	PART No.	DESCRIPTION	QTY

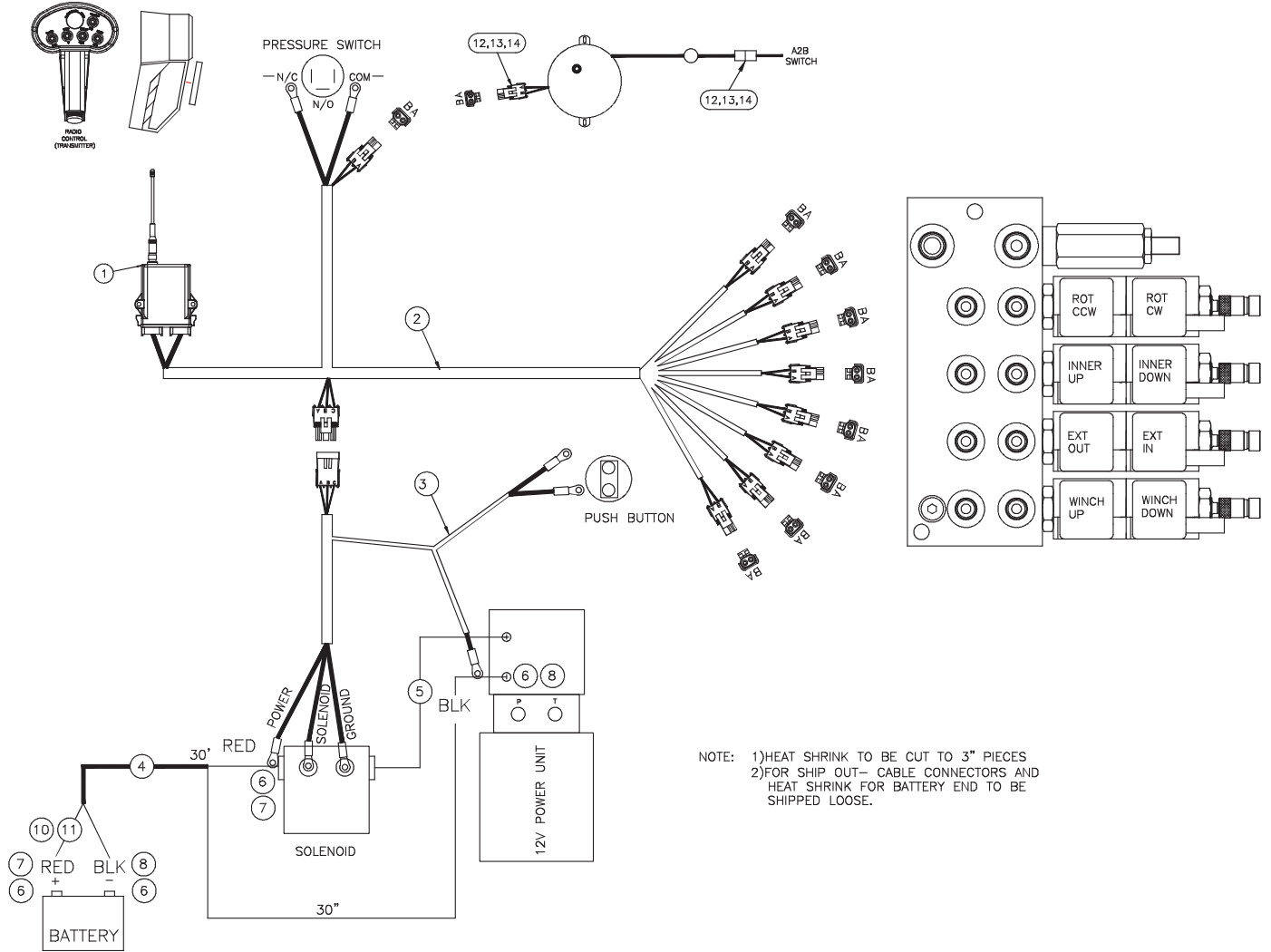
Control Kit (Hydraulic Version) - PN 44739



PN 44739

07	10965	STRAIN RELIEF .50 NPT .20-.35 CABLE	1
06	9756	CONTACT M TERM SHROUD 18-20	2
05	8384	CABLE SEAL 18-20 PACKARD 39000	2
04	9752	CONNECT 2 PIN SHROUD PACKARD	1
03	25888	WIRE HARNESS 3315 HYD	1
02	50923	WIRE HARNESS 3315/4420 DUETSCH	1
01	39784	RADIO CNTRL ASM 5 FCTN ON/OFF	1
ITEM	PART No.	DESCRIPTION	QTY

Control Kit (Electrical Version Cradle A2B) - PN 48112

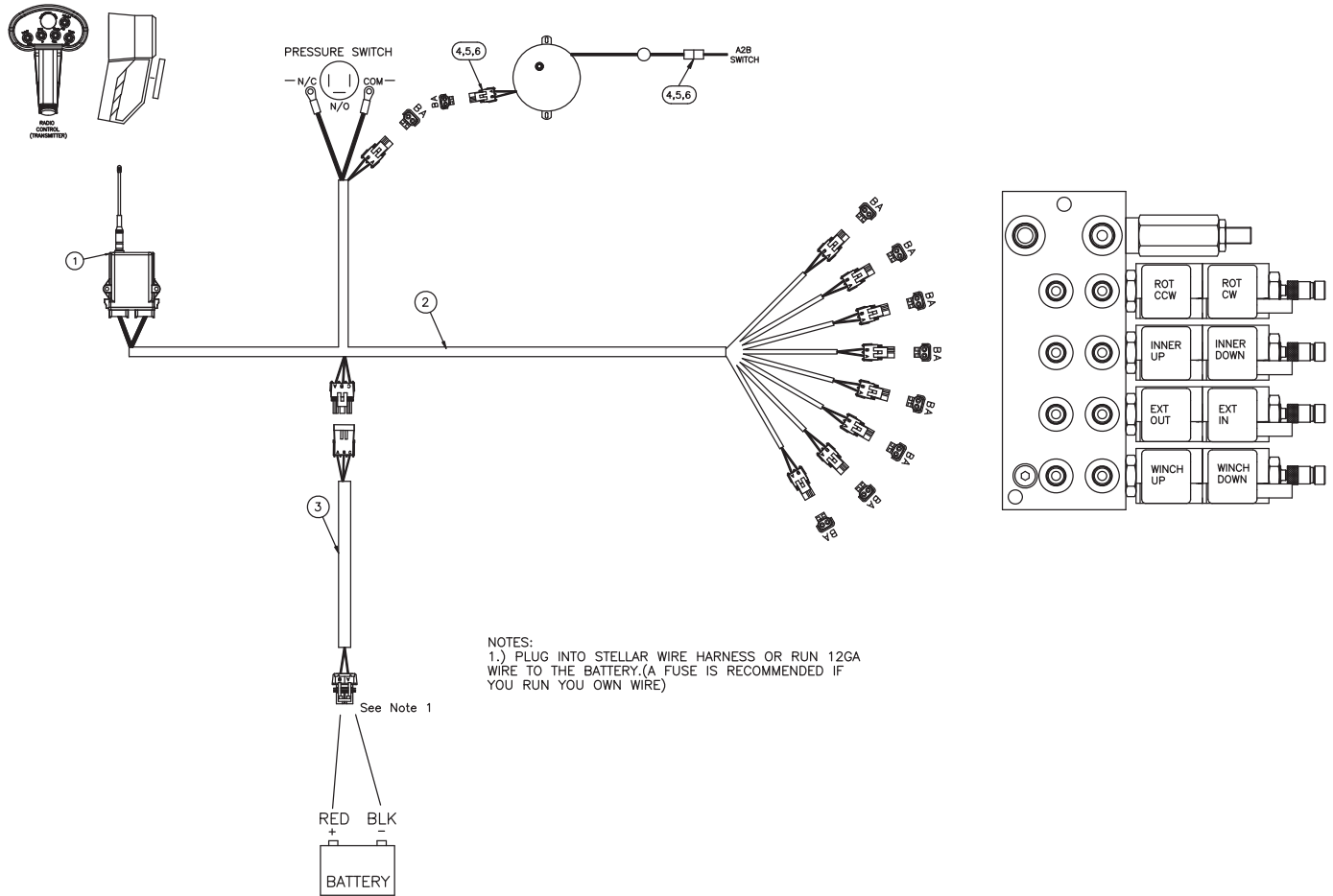


NOTE: 1) HEAT SHRINK TO BE CUT TO 3" PIECES
 2) FOR SHIP OUT - CABLE CONNECTORS AND HEAT SHRINK FOR BATTERY END TO BE SHIPPED LOOSE.

PN 48112

14	8384	CABLE SEAL 18-20 PACKARD 39000	4
13	9752	CONNECT 2 PIN SHROUD PACKARD	2
12	9756	CONTACT M TERM SHROUD 18-20	4
11	36435	FUSE 200 AMP 46274	2
10	32523	FUSE HOLDER 46039	2
09	18472	DECAL MANUAL OPERATION 5520	1
08	15218	HEAT SHRINK 0.50 BLK (RM) 22241	6"
07	15219	HEAT SHRINK 0.50 RED (RM) 22241	6"
06	4466	TERML #1X.38 COPPER LUG	4
05	59518	WIRE HARNESS BATTERY CABLE	1
04	20466	CABLE #2 2 WIRE	32.5'
03	25887	WIRE HARNESS 3315 ELECTRIC	1
02	50923	WIRE HARNESS 3315/4420 DEUTSCH	1
01	39784	RADIO CTRL ASM 5 FCTN	1
ITEM	PART No.	DESCRIPTION	QTY

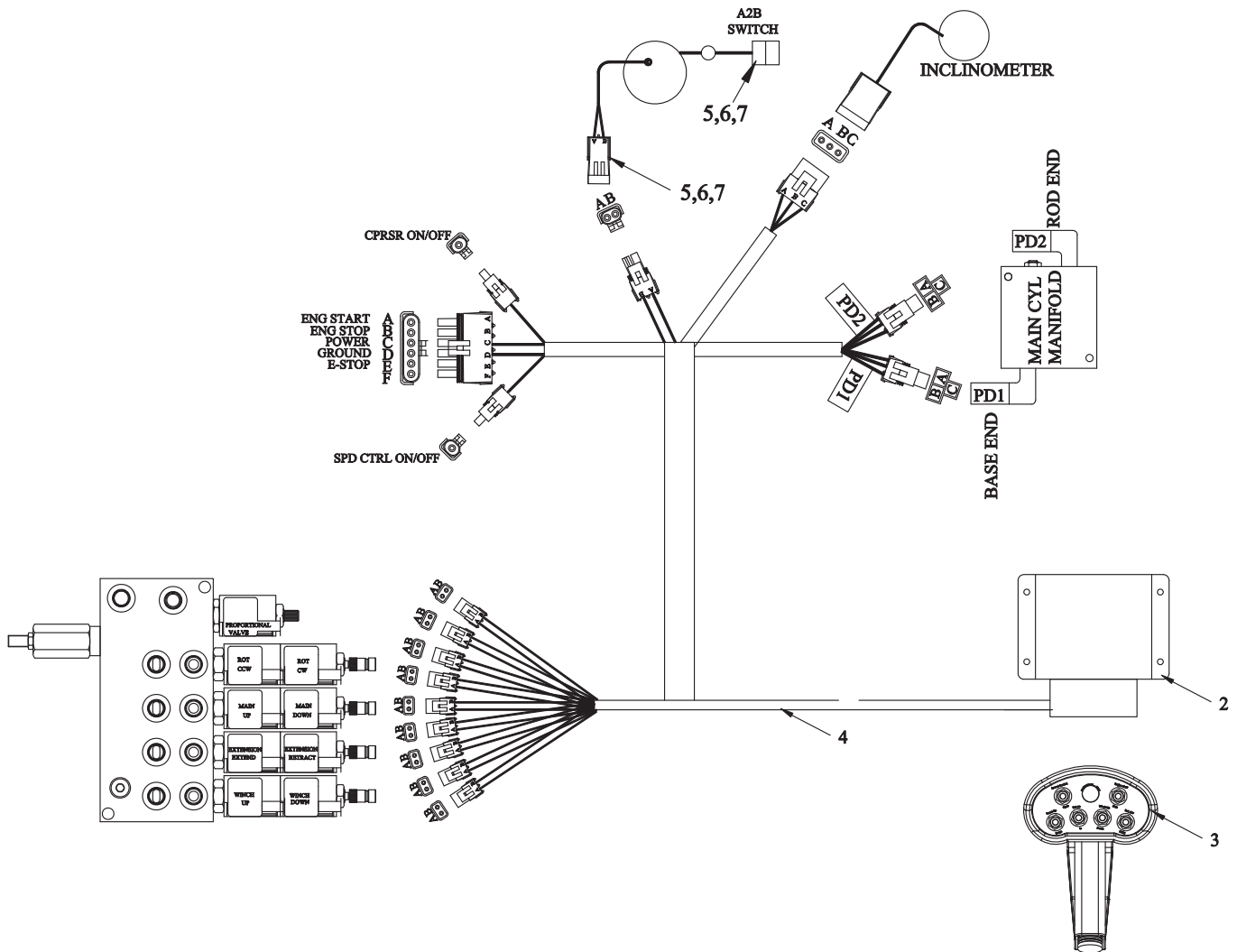
Control Kit (Hydraulic Version Cradle A2B) - PN 48113



PN 48113

06	9756	CONTACT M TERM SHROUD 18-20	4
05	8384	CABLE SEAL 18-20 PACKARD 39000	4
04	9752	CONNECT 2 PIN SHROUD PACKARD	2
03	25888	WIRE HARNESS 3315 HYD	1
02	50923	WIRE HARNESS 3315 MULTI FUNCTION VB	1
01	39784	HANDLE ASSEMBLY	1
ITEM	PART No.	DESCRIPTION	QTY

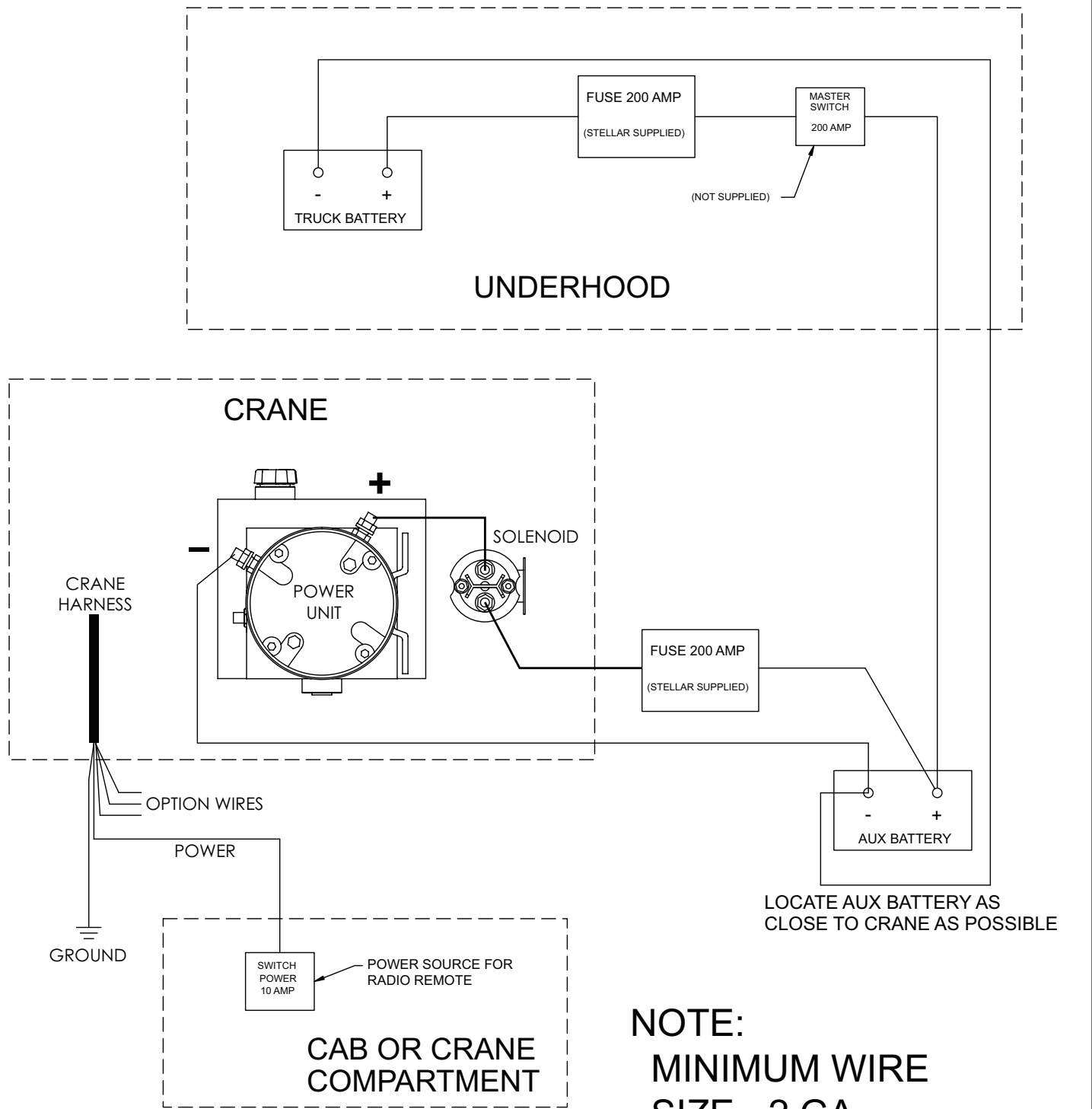
Control Kit (CDT™ Version) - PN 60235



PN 60235

07	8384	CABLE SEAL	4
06	9752	CONNECT 2 PIN SHROUD	2
05	10978	CONTACT M/TERM SHROUD	4
04	60032	WIRE HARNESS 3315 CDT	1
03	.	TRANSMITTER - RADIO (PART OF 1)	REF
02	.	RECEIVER - RADIO (PART OF 1)	REF
01	60236	RADIO CONTROLLER ASSEMBLY	1
ITEM	PART No.	DESCRIPTION	QTY

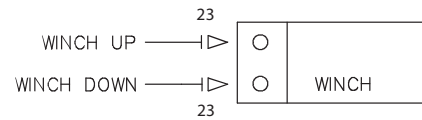
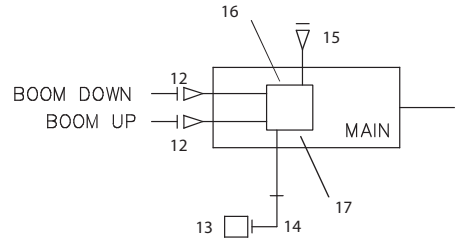
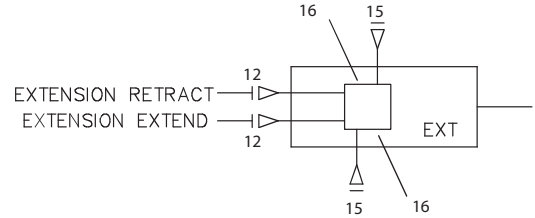
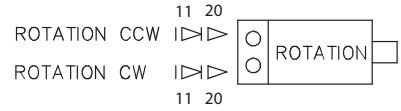
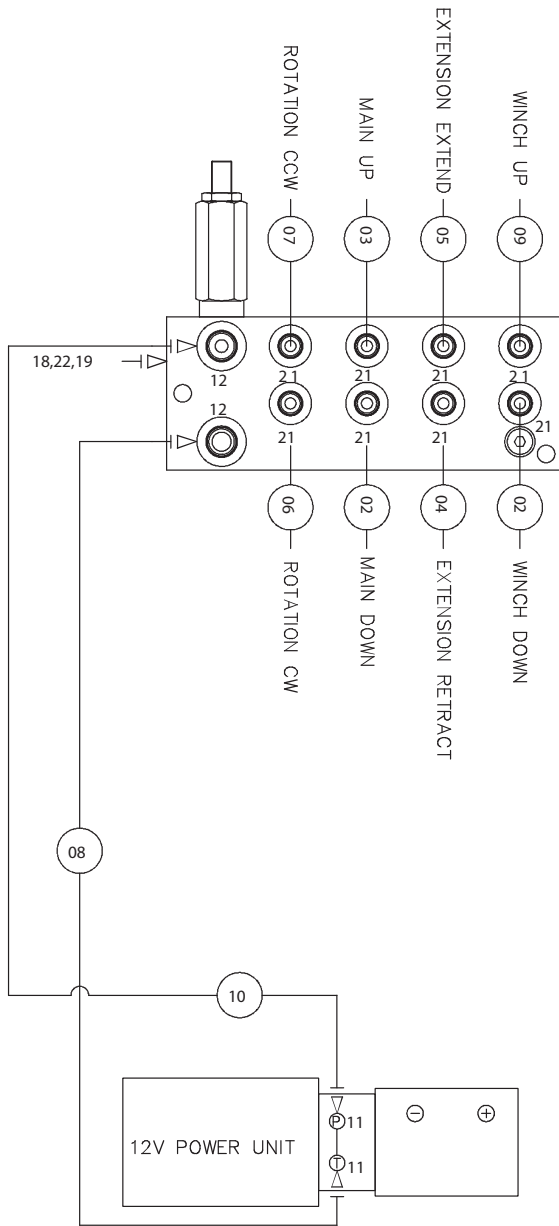
Wiring Diagram (Electrical Version)



LOCATE AUX BATTERY AS CLOSE TO CRANE AS POSSIBLE

NOTE:
 MINIMUM WIRE
 SIZE - 2 GA
 CUSTOMER SUPPLIED

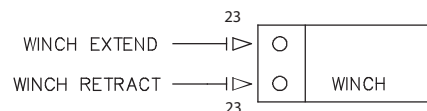
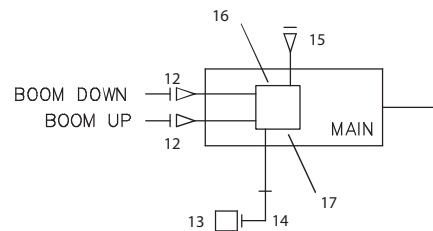
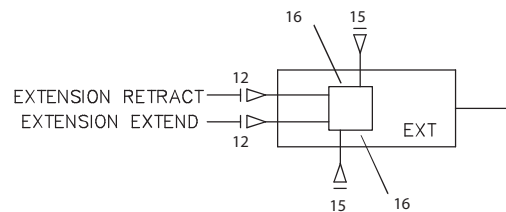
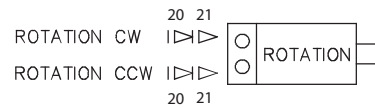
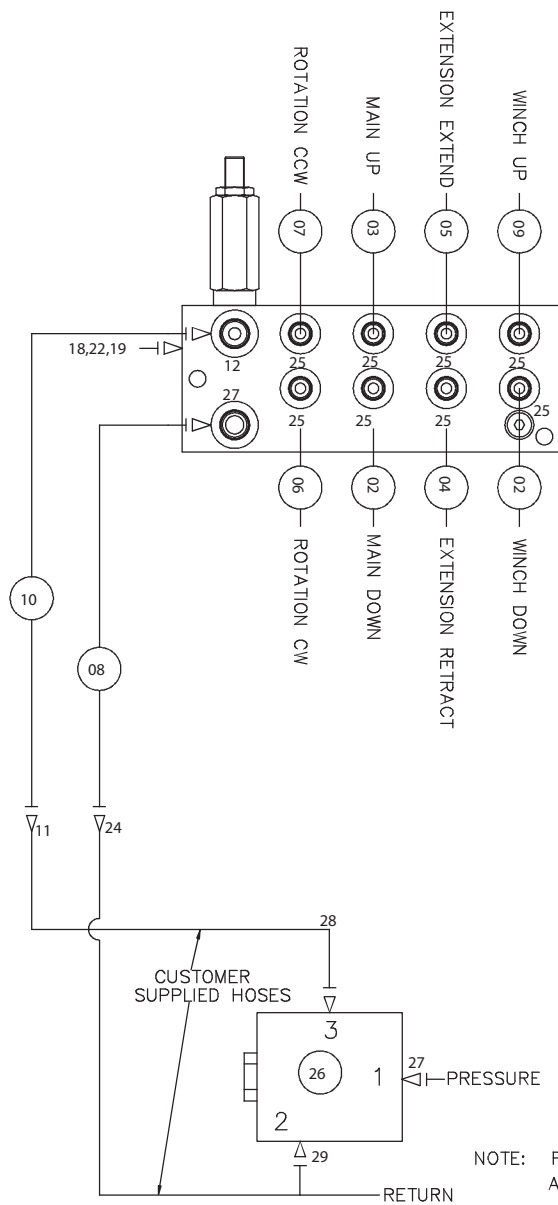
Hydraulic Kit (Electrical Version) - PN 20433



PN 20433

12	C4922	FTG ADAPT 4-6 F50LO-S	6				
11	3338	FTG MF/MSTR 90 4-6 C50LO-S	4	23	D1190	FTG ADAPT 4-6 V50LO-S	2
10	21160	HOSE-HYD .25 X 18	1ref	22	C5908	FTG 0.25 ML ELL	1
09	21159	HOSE-HYD .25X 25	1ref	21	D1291	FTG ADAPT 4-F50LO-S	8
08	21161	HOSE-HYD .25 X 19	1ref	20	C1111	FTG ADAPT MSTR/FSTR 10-6 F50G5	2
07	21158	HOSE-HYD .25X 34	1ref	19	6691	FTG MSTR/FNPT 6-1/4	1
06	15032	HOSE-HYD .25 X 35	1ref	18	6397	GAUGE OIL LF 2.5" 0-5000 CBM	1
05	21157	HOSE-HYD .25 X 50	1ref	17	11991	VALVE C-BAL PLUG	1ref
04	21156	HOSE-HYD .25 X 50	1ref	16	9803	VALVE C-BAL	3ref
03	25006	HOSE-HYD .25 X 27	1ref	15	C4961	PLUG STR HOLLOW HEX 0.38 6-HP50N	3ref
02	13438	HOSE-HYD .25 X 26	2ref	14	3861	FTG ML FM O'RING 90 DEG	1
01	20434	HOSE KIT 3315 CRANE (incl: 2-11)	1	13	49314	SWITCH PRES OVERLD CD-11C-2600R/WD	1
ITEM	PART No.	DESCRIPTION	QTY	ITEM	PART No.	DESCRIPTION	QTY

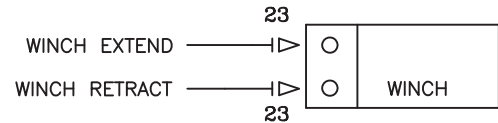
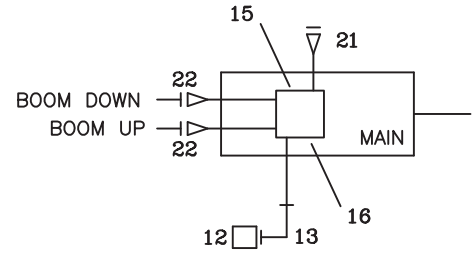
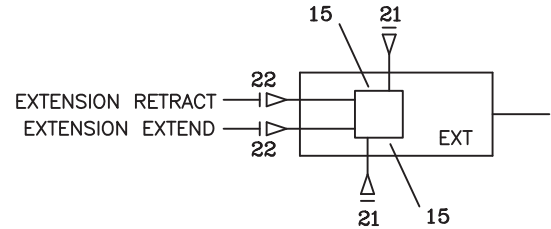
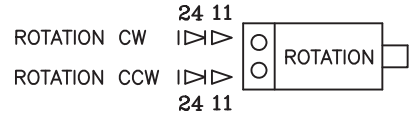
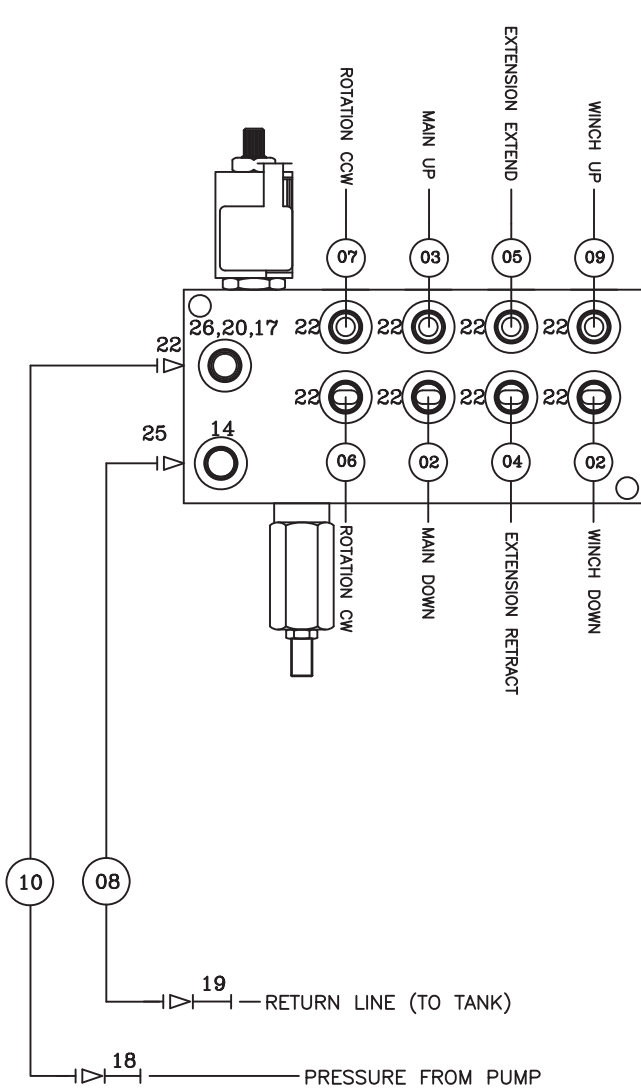
Hydraulic Kit (Hydraulic Version) - PN 23181



PN 23181

15	C4961	PLUG STR HOLLOW HEX 0.38 6-HP50N	3ref				
14	3861	FTG ML FM O'RING 90 DEG	1	29	C2345	FTG TEE 6-S50L0-S	1
13	49314	SWITCH PRES OVERLD CD-11C-2600R/WD	1	28	C0338	FTG MF/MSTR 90 6-C50L0-S	1
12	C4922	FTG ADAPT 4-6 F50L0-S	5	27	0279	FTG ADAPT 6-F50L0-S	2
11	12171	FTG SWIVEL 0.38 FS/FS PS81JMJM-6-6	1	26	26196	VALVE FLW CTRL/PR FRCA-XAN-ECI-3GPM	1
10	23182	HOSE-HYD .25 X 15	1ref	25	D1291	FTG ADAPT 4-F50L0-S	8
09	21159	HOSE-HYD .25X 25	1ref	24	12172	FTG SWIVEL 0.50 FS/FS PS81JMJM-8-8	1
08	23183	HOSE-HYD .38 X 14	1ref	23	D1190	FTG ADAPT 4-6 V50L0-S	2
07	21158	HOSE-HYD .25X 34	1ref	22	C5908	FTG 0.25 ML ELL	1
06	15032	HOSE-HYD .25 X 35	1ref	21	3338	FTG MF/MSTR 90 4-6 C50L0-S	2
05	21157	HOSE-HYD .25 X 50	1ref	20	C1111	FTG ADAPT MSTR/FSTR 10-6 F50G5	2
04	21156	HOSE-HYD .25 X 50	1ref	19	6691	FTG MSTR/FNPT 6-1/4	1
03	25006	HOSE-HYD .25 X 27	1ref	18	6397	GAUGE OIL LF 2.5" 0-5000 CBM	1
02	13438	HOSE-HYD .25 X 26	2ref	17	11991	VALVE C-BAL PLUG	1ref
01	23184	HOSE KIT 3315 CRANE (incl:2-10)	1	16	9803	VALVE C-BAL	3ref
ITEM	PART No.	DESCRIPTION	QTY	ITEM	PART No.	DESCRIPTION	QTY

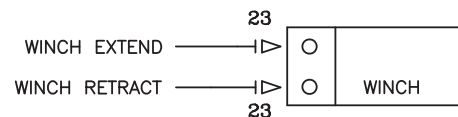
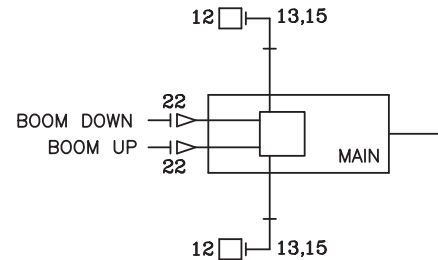
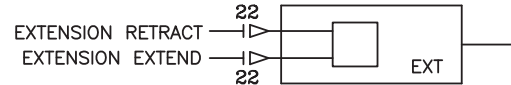
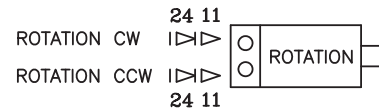
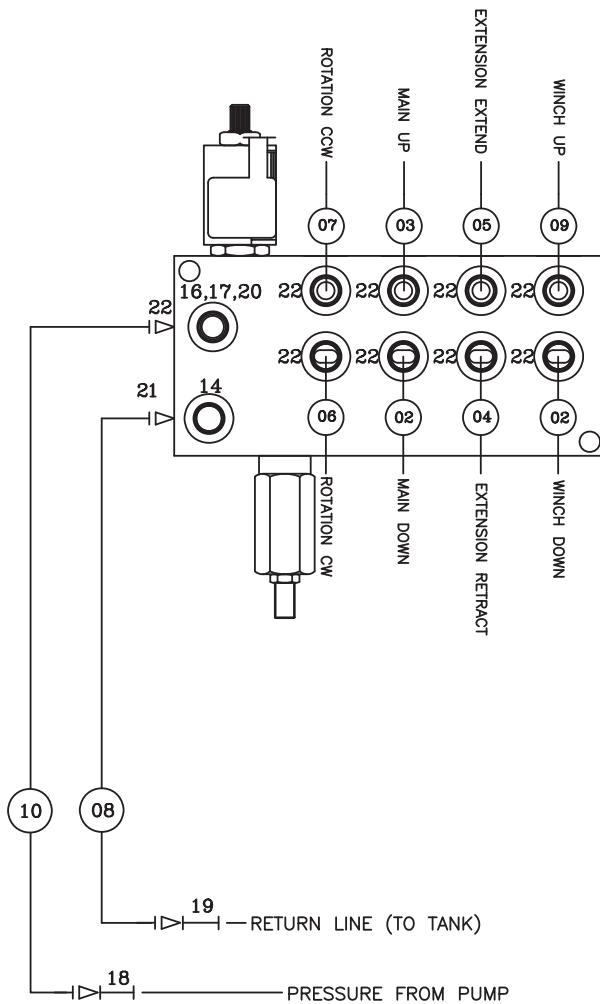
Hydraulic Kit (Proportional Version) - PN 50604



PN 50604

13	3861	FTG ML FM O'RING 90 DEG	1	26	C5908	FTG 0.25 ML ELL	1
12	49314	SWITCH PRES OVERLD CD-11C-2600R/WD	1	25	C1854	FTG ADAPT 6-8 F50LO-S	1
11	C1111	FTG ADAPT MSTR/FSTR 10-6 F50G5	2	24	3338	FTG MF/MSTR 90 4-6 C50LO-S	2
10	23182	HOSE-HYD .25 X 15	1ref	23	D1190	FTG ADAPT 4-6 V50LO-S	2
09	21159	HOSE-HYD .25X 25	1ref	22	C4922	FTG ADAPT 4-6 F50LO-S	12
08	23183	HOSE-HYD .38 X 14	1ref	21	C4961	PLUG STR HOLLOW HEX 0.38 6-HP50N	REF
07	21158	HOSE-HYD .25X 34	1ref	20	D1430	FTG ADAPT O'RING FMP 6-1/4 F50G-S	1
06	15032	HOSE-HYD .25 X 35	1ref	19	12172	FTG SWIVEL 0.50 FS/FS PS81 JMJM-8-8	1
05	21157	HOSE-HYD .25 X 50	1ref	18	12171	FTG SWIVEL 0.38 FS/FS PS81 JMJM-6-6	1
04	21156	HOSE-HYD .25 X 50	1ref	17	6397	GAUGE OIL LF 2.5 0-5000 CBM	1
03	25006	HOSE-HYD .25 X 27	1ref	16	11991	VALVE C-BAL PLUG	REF
02	13438	HOSE-HYD .25 X 26	2ref	15	9803	VALVE C-BAL	REF
01	23184	HOSE KIT 3315 CRANE (incl:2-10)	1	14	C4961	PLUG STR HOLLOW HEX 0.38 6-HP50N	1
ITEM	PART No.	DESCRIPTION	QTY	ITEM	PART No.	DESCRIPTION	QTY

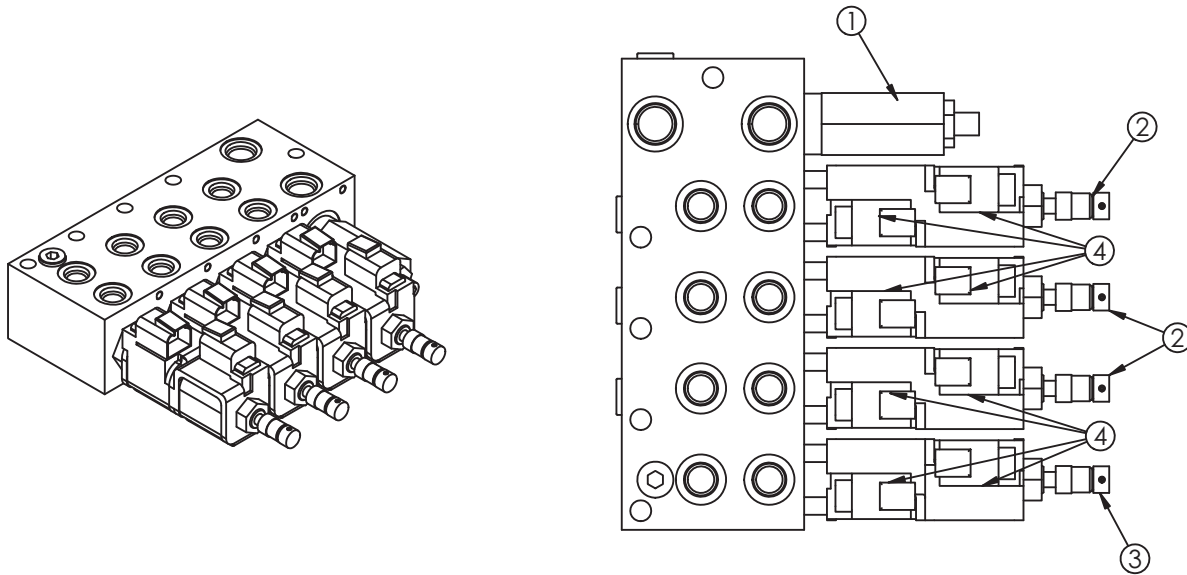
Hydraulic Kit (CDT™ Version) - PN 60234



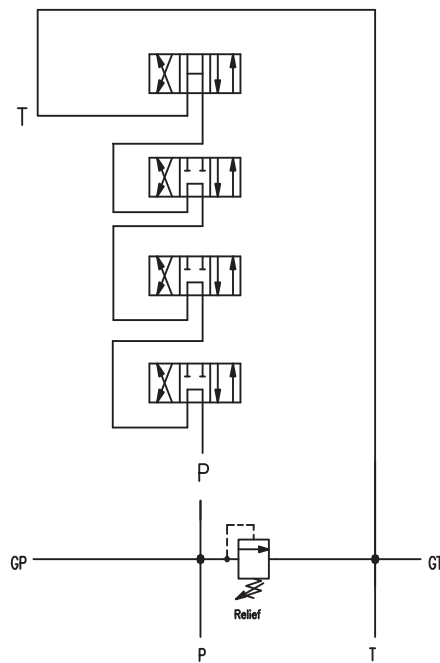
PN 60234

12	28485	TRANSDUCER PRESSURE 5000 PSI	2	24	3338	FTG MF/MSTR 90 4-6 C50LO-S	2
11	C1111	FTG ADAPT MSTR/FSTR 10-6 F50G5	2	23	D1190	FTG ADAPT 4-6 V50LO-S	2
10	23182	HOSE-HYD .25 X 15	1ref	22	C4922	FTG ADAPT 4-6 F50LO-S	12
09	21159	HOSE-HYD .25X 25	1ref	21	C1854	FTG ADAPT 6-8 F50LO-S	1
08	23183	HOSE-HYD .38 X 14	1ref	20	D1430	FTG ADAPT O'RING FMP 6-1/4 F50G-S	1
07	21158	HOSE-HYD .25X 34	1ref	19	12172	FTG SWIVEL 0.50 FS/FS PS81 MJJM-8-8	1
06	15032	HOSE-HYD .25 X 35	1ref	18	12171	FTG SWIVEL 0.38 FS/FS PS81 MJJM-6-6	1
05	21157	HOSE-HYD .25 X 50	1ref	17	6397	GAUGE OIL LF 2.5 0-5000 CBM	1
04	21156	HOSE-HYD .25 X 50	1ref	16	C5908	FTG 0.25 ML ELL	1
03	25006	HOSE-HYD .25 X 27	1ref	15	15111	FTG ADAPT MSTR/FSTR 6-4-F50G5	2
02	13438	HOSE-HYD .25 X 26	2ref	14	C4961	PLUG STR HOLLOW HEX 0.38 6-HP50N	1
01	23184	HOSE KIT 3315 CRANE (incl:2-10)	1	13	3861	FTG ML FM O'RING 90 DEG	2
ITEM	PART No.	DESCRIPTION	QTY	ITEM	PART No.	DESCRIPTION	QTY

Valve Bank (Standard Hydraulic Version) - PN 50591



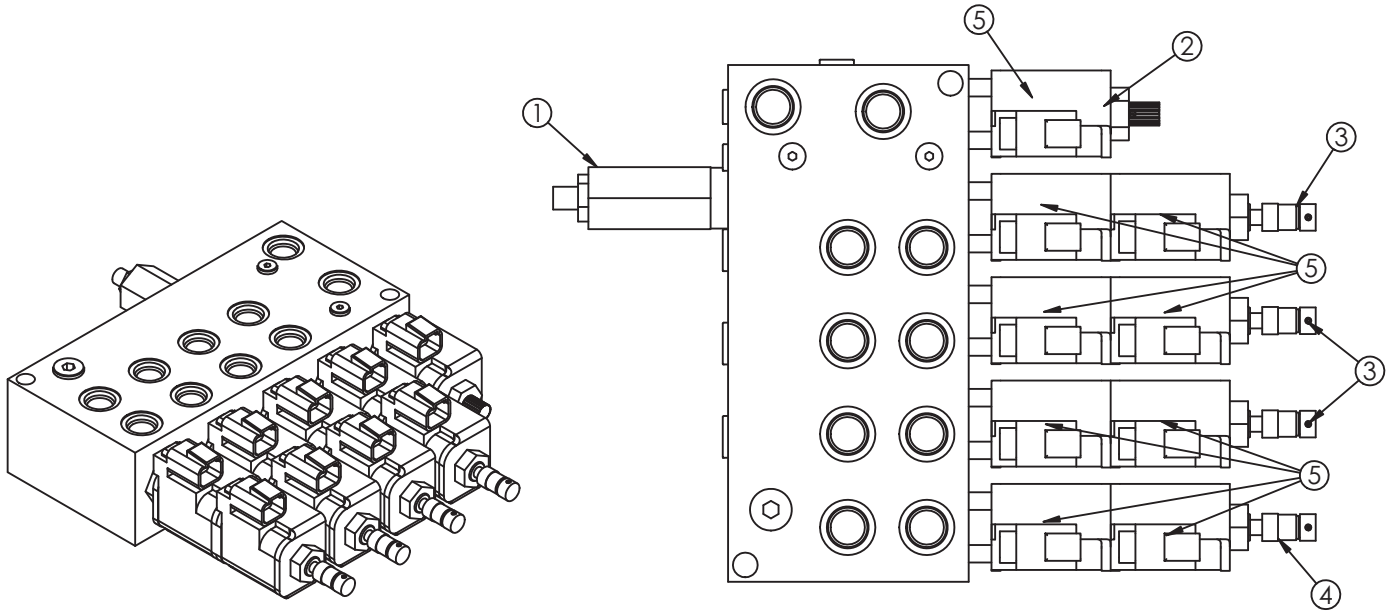
HYDRAULIC SCHEMATIC



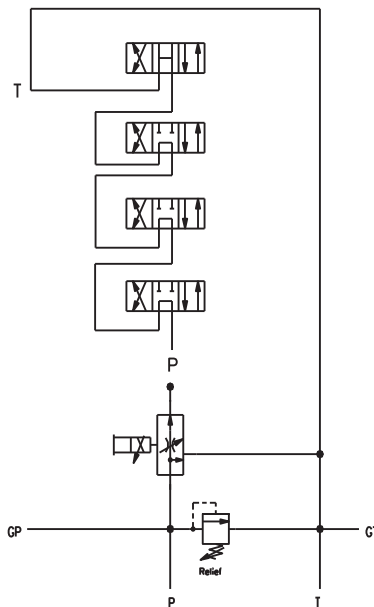
PN 50591

ITEM	PART	DESCRIPTION	QTY
1	25375	RELIEF VALVE 24957	1
	25376	SEAL KIT 25375	
2	25377	VALVE SOLND 3 POS 4 WAY TAND G02571	3
3	25378	VALVE SOLND 3 POS 4 WAY OPEN G02591	1
	25379	SEAL KIT 25377/25378	
4	55126	COIL 12VDC DUETSCH CCP012H	8

Valve Bank (Proportional Version) - PN 50592



HYDRAULIC SCHEMATIC

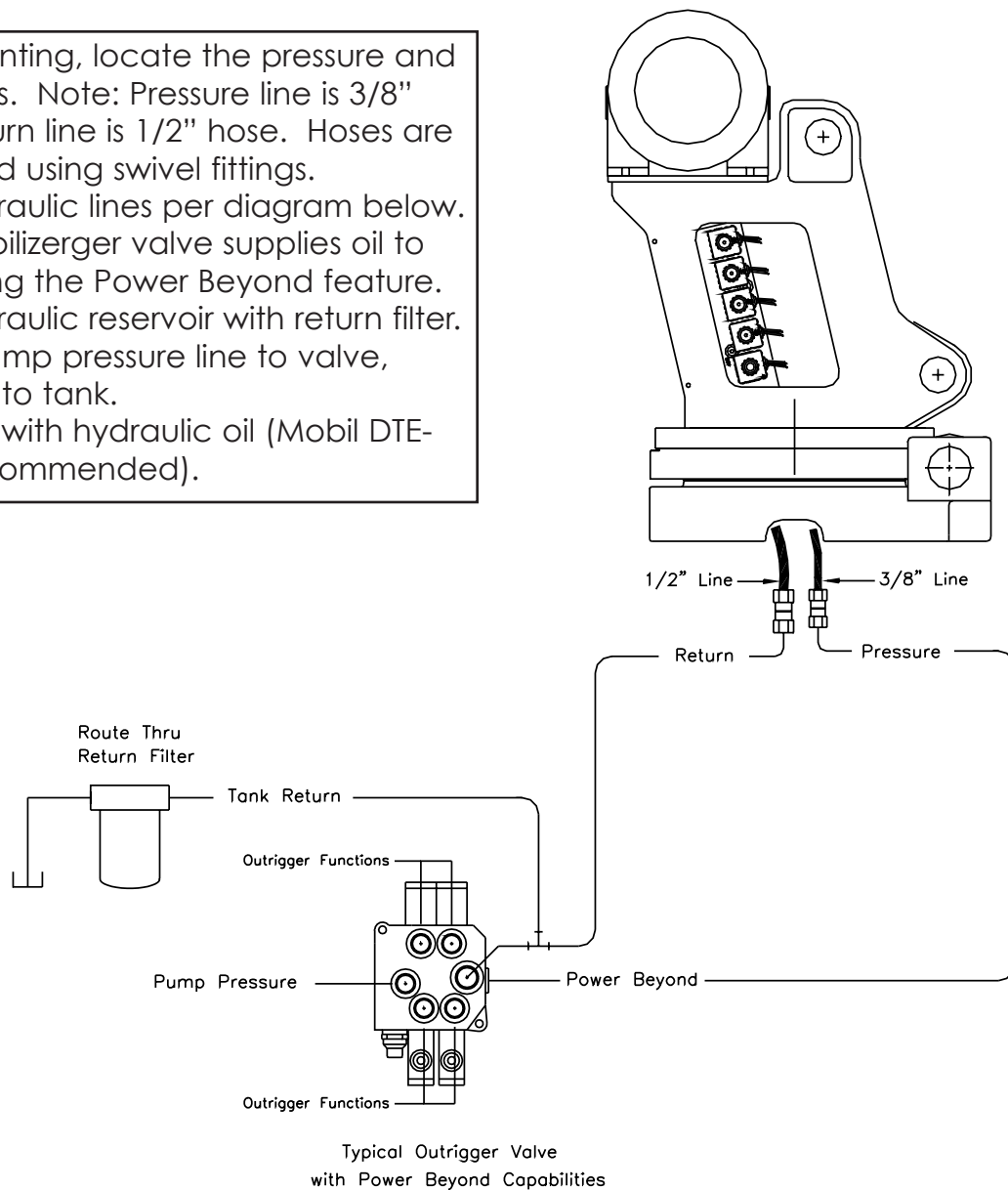


PN 50592

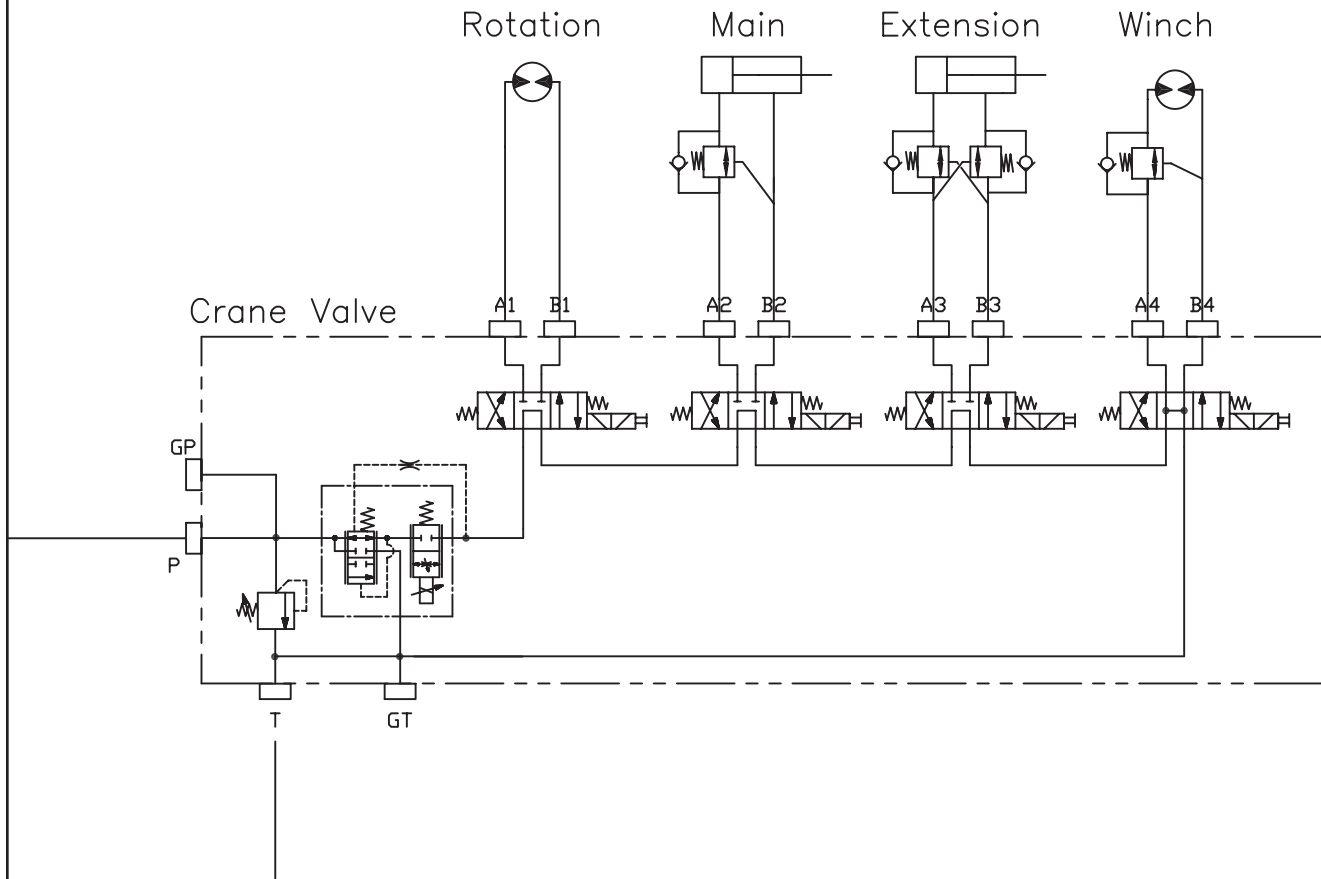
ITEM	PART	DESCRIPTION	QTY
1	25367	RELIEF VALVE 24685/24690	1
	25368	SEAL KIT 25367	
2	25381	VALVE FLW CTRL PRP/JP04C3150N 0-4	1
	25369	SEAL KIT 24960/25381	
3	25371	VALVE SOLND 3 POS 4 WAY TAND G04571	3
4	25372	VALVE SOLND 3 POS 4 WAY OPEN G04591	1
	25373	SEAL KIT 25371/25372	
5	44532	COIL 12VDC DUETSCH CAP012H	9

Hydraulic Installation

1. After mounting, locate the pressure and return lines. Note: Pressure line is 3/8" hose; Return line is 1/2" hose. Hoses are terminated using swivel fittings.
2. Install hydraulic lines per diagram below. Note: Stabilizerger valve supplies oil to crane using the Power Beyond feature.
3. Install hydraulic reservoir with return filter. Attach pump pressure line to valve, return link to tank.
4. Fill system with hydraulic oil (Mobil DTE-13M is recommended).



Hydraulic System



Stability Procedure

Definition of Stability for the Stellar Telescopic Crane Products:

A truck is stable until the load cannot be lifted off the ground with the winch, without tipping over the truck. Every Stellar crane installed must be tested for stability to determine the actual load capacity of the final truck package. The actual test data must be recorded and supplied with the truck at the time of in-service and should be kept with the truck at all times. The following procedure will test the truck package for stability and will provide a stability capacity chart. The load limit information shown on the stability capacity chart is formulated on 85% tipping.

Set Up:

1. Locate the truck on a test course in position for loading and engage travel brakes.
2. Set stabilizers so that they make contact with firm, level footings.
3. Operate the crane under partial load to assure operator proficiency and proper machine function.

3315 Stability Data

Max Horizontal Reach: 180" (From the center of rotation to boom tip)
Stability Test Weight: 875 lbs.

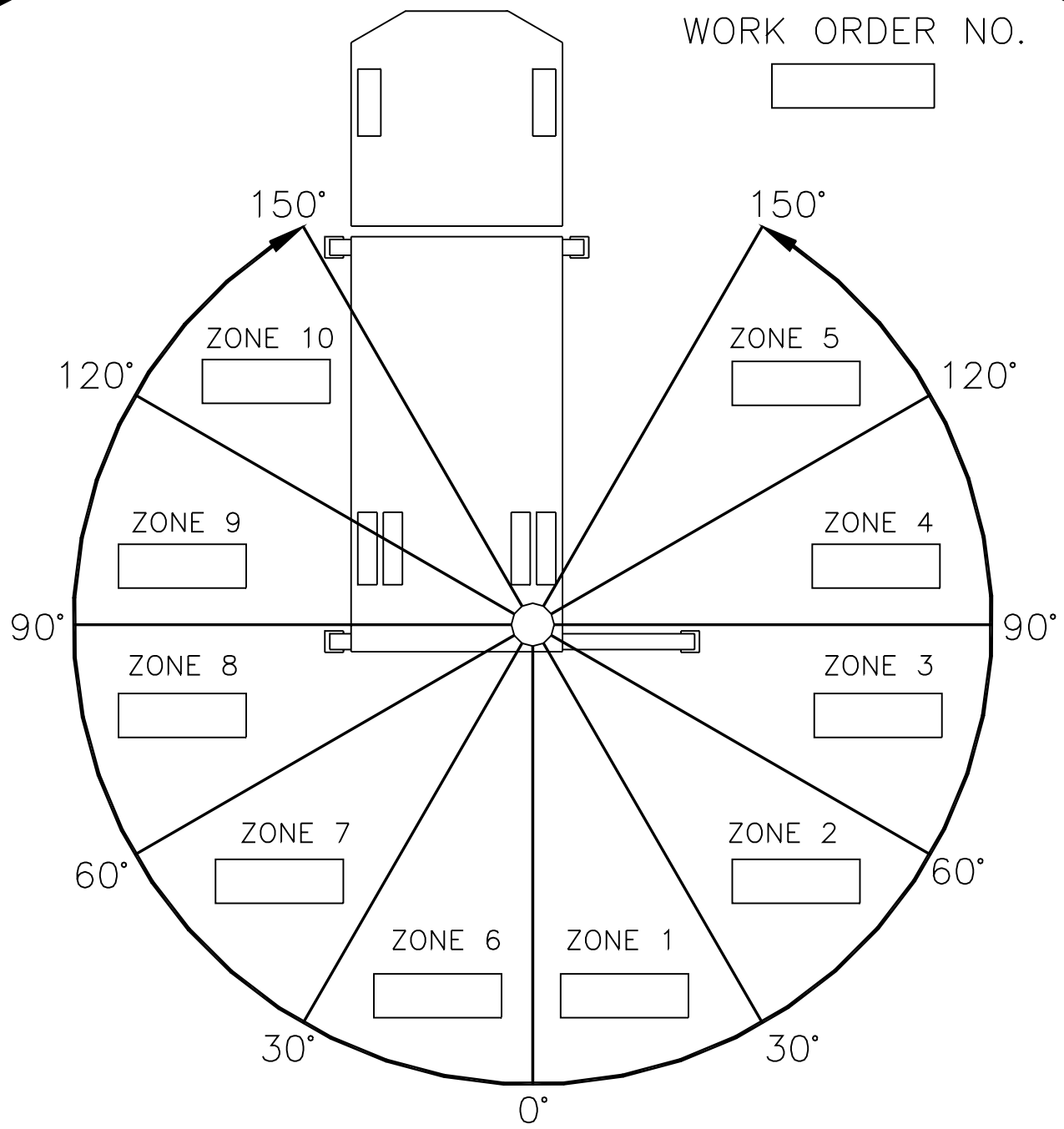
Test Procedure

1. Rotate the crane into Zone 1 position.
2. With the crane fully retracted and the boom horizontal, winch the test weight off the ground. Note: Keep weight within six inches of the ground at all times.
3. Extend the boom outward until full extension has been reached or until the truck becomes unstable (Again, use the winch to keep the weight within six inches of the ground.)
4. If the boom goes full extension without becoming unstable, the crane is termed stable for this zone and 100% can be written in the Zone 1 data box.
5. If the truck becomes unstable prior to going full extension, retract the boom until the truck becomes stable and measure the horizontal reach in this position (center of rotation to boom tip). This is the stable horizontal reach for this zone. Stable horizontal reach divided by Maximum horizontal reach multiplied by 100 equals the percentage of rated capacity for this zone. Use the following formula to determine the percentage of rated capacity:

$$\frac{\text{Stable Horizontal Reach}}{\text{Max Horizontal Reach}} \times 100 = \text{Percentage of Rated}$$

6. Record this number in the data box for Zone 1. This is the revised capacity due to stability for this zone.
7. Repeat this procedure for each zone until the worksheet is completed.
8. This is the revised capacity based on stability of this package.

Stability Capacity Chart

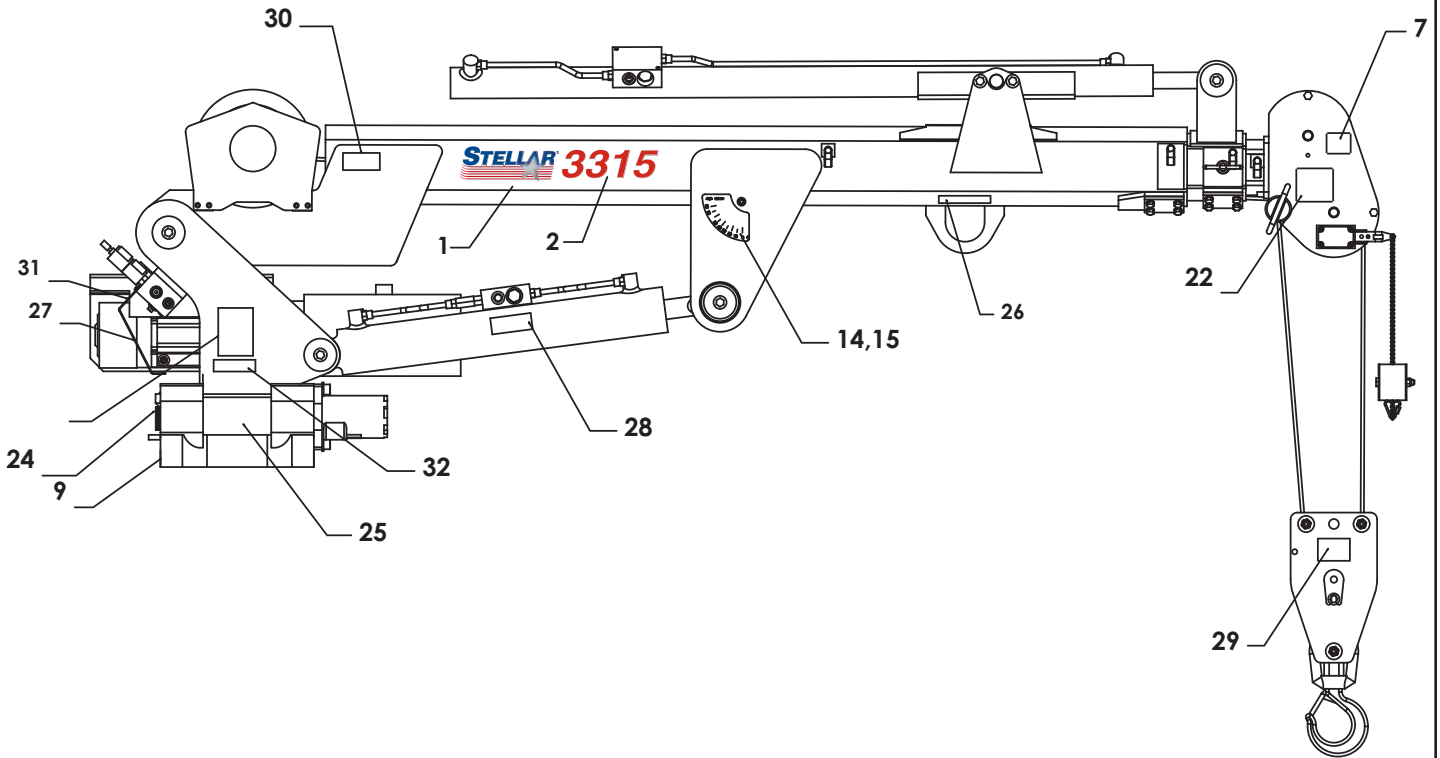


BOXES TO BE FILLED IN WITH PERCENTAGE OF RATED CAPACITY IN THE APPROPRIATE REGION.

STABILITY CAPACITY CHART

STABILITY is based on this specific truck package.

Decal Kit Placement - PN 21162



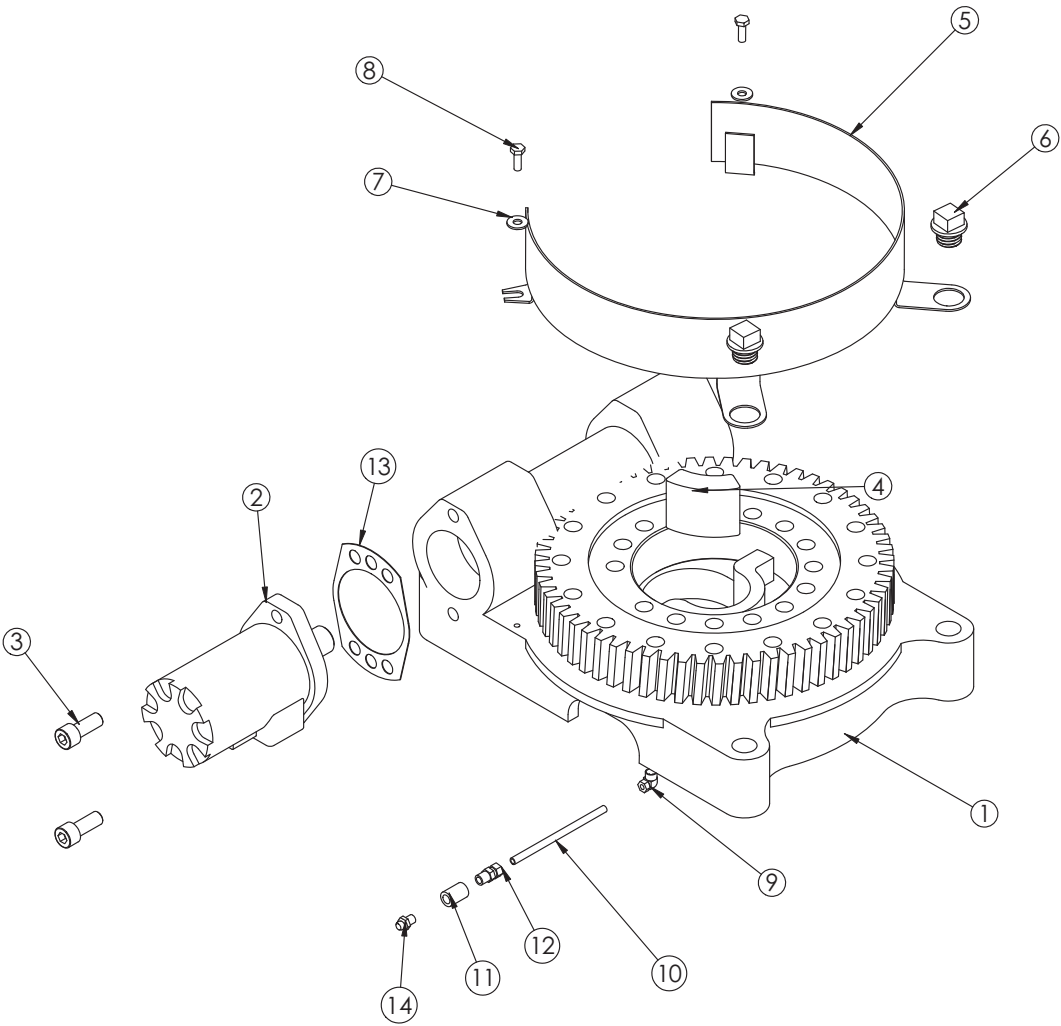
PN 21162

*16	12451	DECAL HOISTING PERSONNEL	1	32	15172	DECAL ASME/ANSI B30.22/B30.5	1
15	13819	DECAL-ANGLE INDICATOR SS	1	31	41068	DECAL VB CONTROL MECH CRANE	1
14	13820	DECAL-ANGLE INDICATOR CS	1	**30	35234	DECAL STELLAR MADE IN THE USA	1
*13	C1179	DECAL-ELECTROCUTION 4.5x7.5	2	29	34223	DECAL SNATCH BLOCK CAP 3 TON	1
*12	C5918	DECAL-DANGER MOVING O.R.	2	28	28256	DECAL WARNING OVERLOAD DEVICE	1
*11	C4795	DECAL-DANGER O.R.	2	27	25159	DECAL WARNING MANUAL OVERRIDES	1
*10	4190	DECAL-DANGER	1	26	24712	DECAL CAUTION STOW HOOK	1
09	9188	DECAL-ROTATE/GREASE	1	25	15171	DECAL GREASE WORM DRIVE BEARINGS	1
*08	4189	DECAL-DANGER	1	24	4188	DECAL-ROTATION ALIGNMENT	1
*07	4186	DECAL-ELECTROCUTION 2x2.75	1	*23	C4541	DECAL-CRANE STOWING	1
*06	C4544	DECAL-DANGER	1	22	12300	DECAL-TWO BLOCKING	1
*05	C4540	DECAL-DANGER	1	*21	4214	DECAL-SERVICE	1
*04	C4545	DECAL-ELECTROCUTION 5x13	4	*20	C0568	DECAL-DIESEL	2
*03	20424	DECAL CAPACITY	2	*19	12452	DECAL MANUAL EXT	1
02	55129	DECAL 3315 IDENTIFICATION	2	*18	C5911	DECAL-STELLAR 2x4.5	3
01	55128	DECAL STELLAR LOGO 2.75 X 7.75	2	*17	C5910	DECAL-STELLAR 4x9.5	1
ITEM	PART No.	DESCRIPTION	QTY	ITEM	PART No.	DESCRIPTION	QTY

**THESE DECALS NOT INCLUDED WITH THE DECAL KIT
*USE THESE DECALS WITH BODY PACKAGE

Chapter 3 - Assembly Drawings

Base Assembly - PN 19998



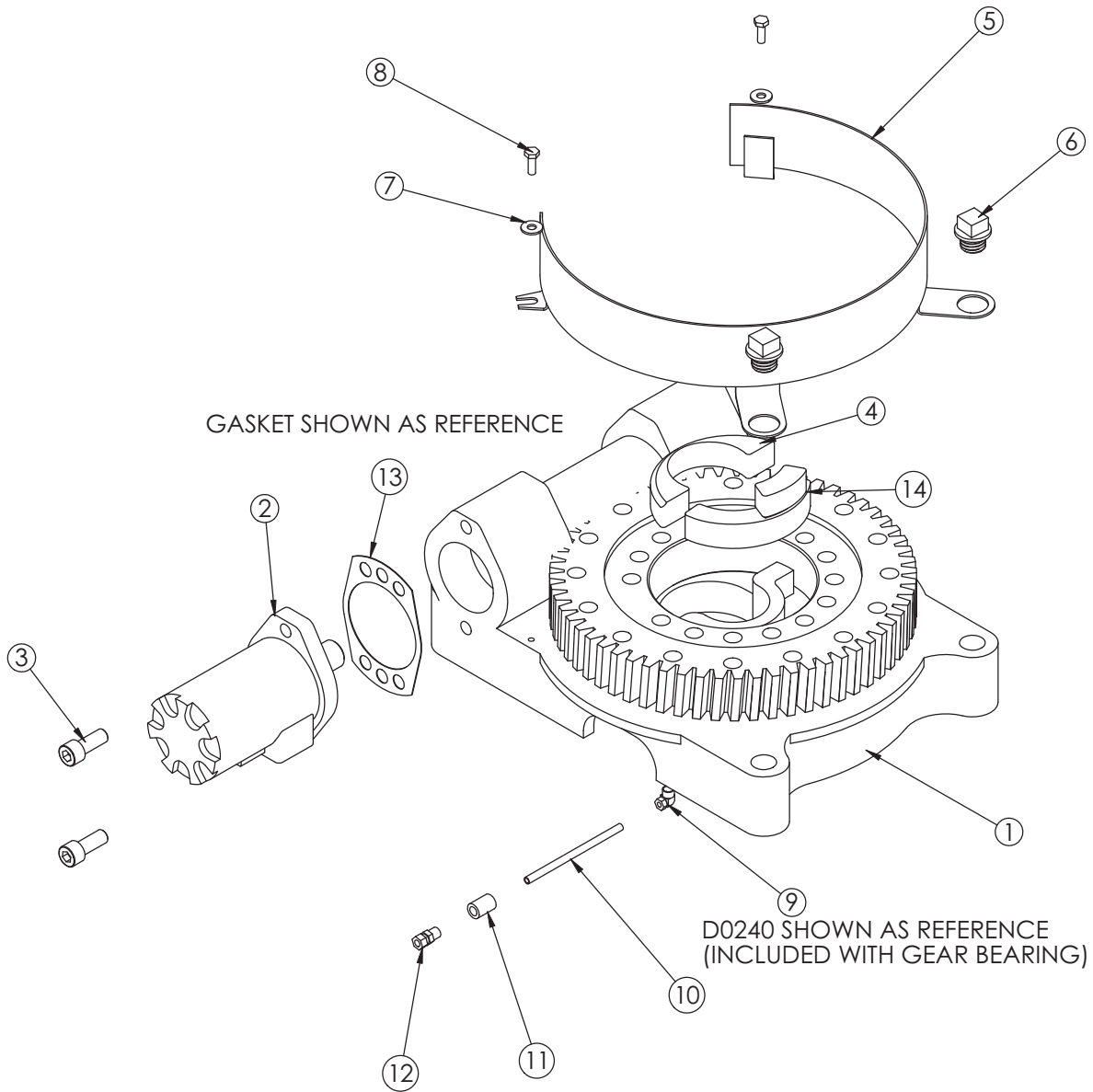
PN 19998

ITEM	PART	DESCRIPTION	QTY.
1	16653	BEARING SWING DRIVE CAST	1
2	D1204	ROTATION MOTOR 5520	1
3	D1307	CAP SCR 0.50-13X1.25 SH	2
4	17750	STOP 3515	1
5	18945PC	GUARD TTB 5520 CRANE	1
6	18948	CAP SCR 0.88-9 X .63 PLASTIC	2
7	0340	WASHER 0.25 FLAT	2
8	0479	CAP SCR 0.25-20X0.75 HHGR5	2
9	D0240	FTG ELL 0.13 CPRSN TUBE TO NPT	1
10	22393	TUBE AIR	1
11	C2256	FTG COUPLER PIPE 0.13	1
12	D1345	FTG CPRSN 0.12NPT/0.25 TUBE	1
13	21151	GASKET MOTOR 008-10056-1	1
14	56589	ZERK 1/8 NPT STRAIGHT LONG THREAD	1

GASKET SHOWN AS REFERENCE

D0240 SHOWN AS REFERENCE
(INCLUDED WITH GEAR BEARING)

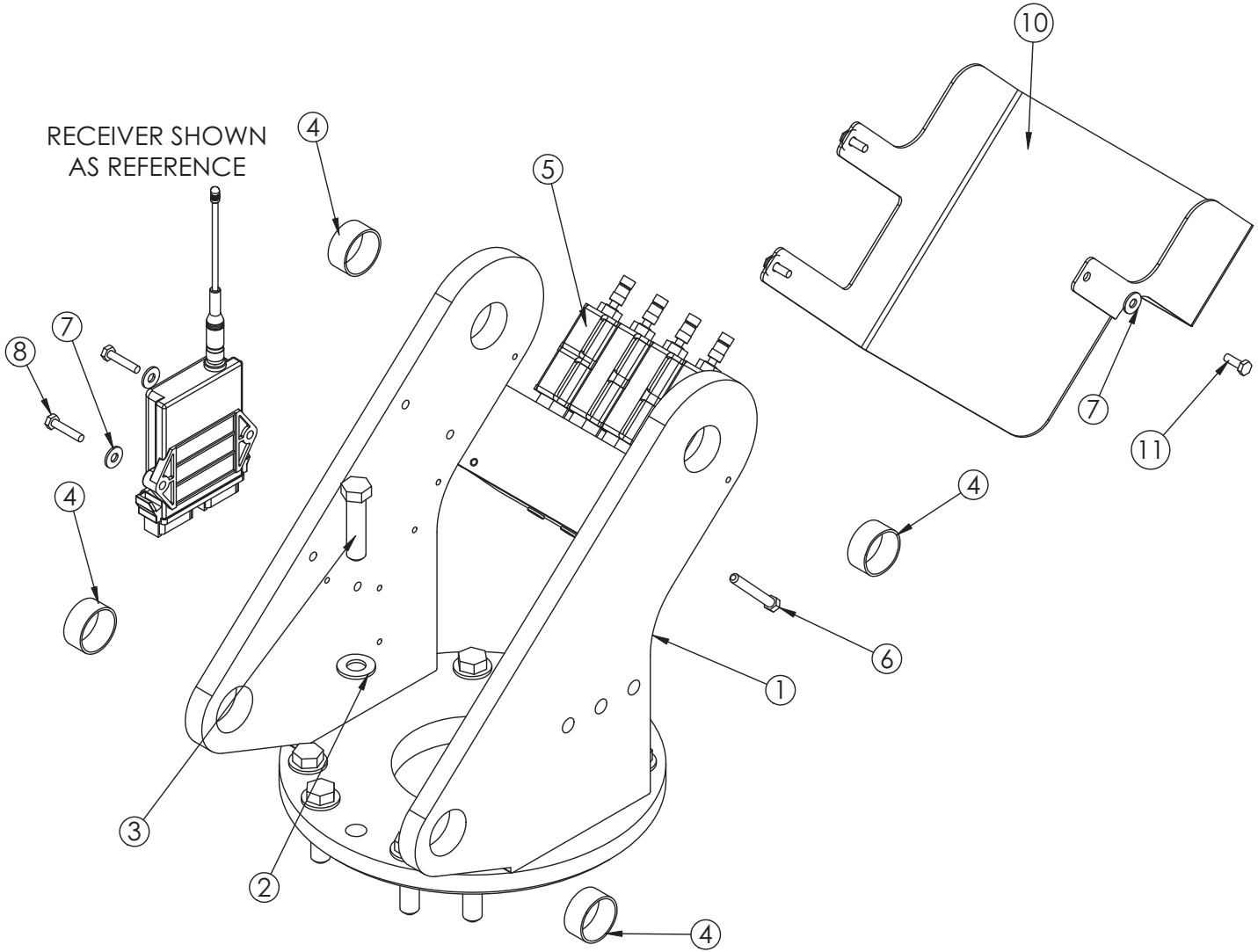
Base Assembly (315 Degree Rotation) - PN 29336



PN 29336

ITEM	PART	DESCRIPTION	QTY.
1	16653	BEARING SWING DRIVE CAST	1
2	D1204	ROTATION MOTOR 5520	1
3	D1307	CAP SCR 0.50-13X1.25 SH	2
4	21164	PLATE CAST BASE 5520	1
5	18945PC	GUARD TTB 5520 CRANE	1
6	18948	CAP SCR 0.88-9 X .63 PLASTIC	2
7	0340	WASHER 0.25 FLAT	2
8	0479	CAP SCR 0.25-20X0.75 HHGR5	2
9	D0240	FTG ELL 0.13 CPRSN TUBE TO NPT	1
10	22393	TUBE AIR	1
11	C2256	FTG COUPLER PIPE 0.13	1
12	D1345	FTG CPRSN 0.12NPT/0.25 TUBE	1
13	21151	GASKET MOTOR 008-10056-1	1
14	29337	STOP SLIDING 315 DEG 3315	1

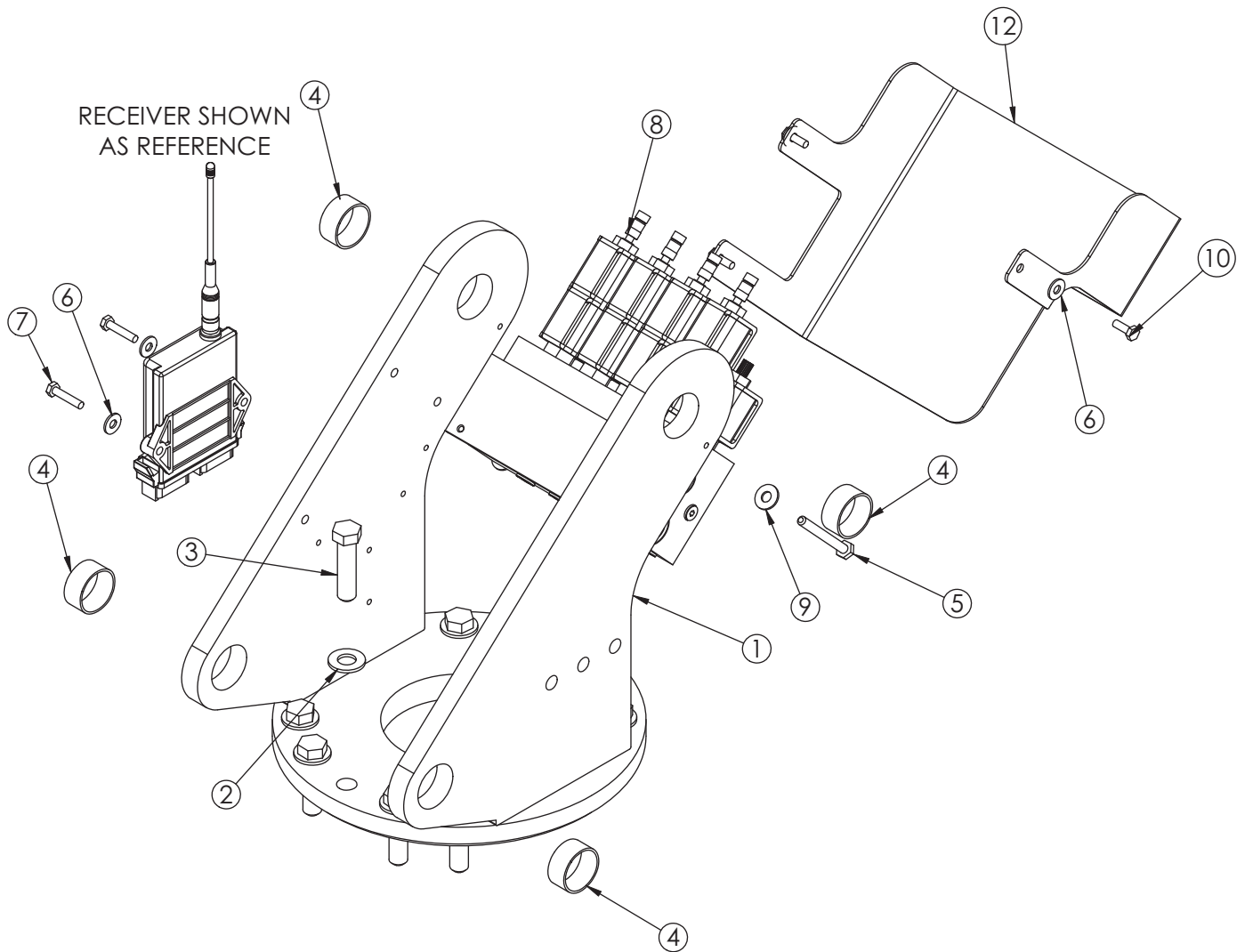
Mast Assembly - PN 44647



PN 44647

ITEM	PART	DESCRIPTION	QTY.
1	50597	MAST 3315 HYD PROP H2	1
2	C5902	WASHER 0.63 SAE FLAT YELLOW GR8	10
3	C1026	CAP SCR 0.63-11X2.50 HHGR8 ZY	10
4	21810	BUSHING GSI-2426-12 1.50X0.75	4
5	50591	VB 4 SECT ELECT ON/OFF STERLING4GPM	1
6	0489	CAP SCR 0.31-18X2.50 HHGR5	2
7	0340	WASHER 0.25 FLAT	5
8	0437	CAP SCR 0.25-20X1.25 HHGR5	2
10	50599PC	COVER 3315 HYD PROP H2	1
11	0479	CAP SCR 0.25-20X0.75 HHGR5	3

Mast Assembly (Proportional Version) - PN 50596

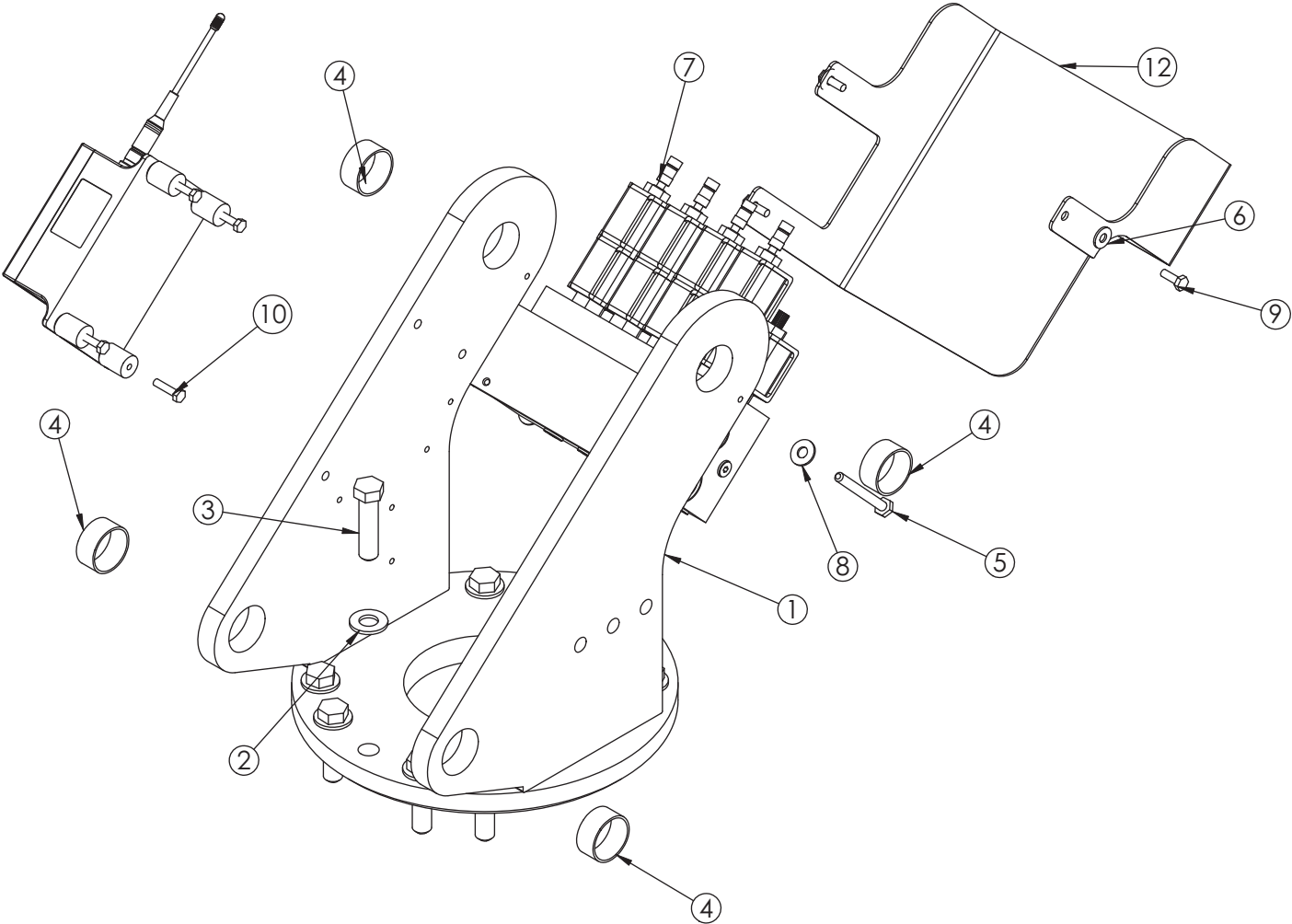


PN 50596

ITEM	PART	DESCRIPTION	QTY.
1	50597	MAST 3315 HYD PROP H2	1
2	C5902	WASHER 0.63 SAE FLAT YELLOW GR8	10
3	C1026	CAP SCR 0.63-11X2.50 HHGR8 ZY	10
4	21810	BUSHING GSI-2426-12 1.50X0.75	4
5	C0930	CAP SCR 0.31-18X3.00 HHGR5	2
6	0340	WASHER 0.25 FLAT	5
7	0437	CAP SCR 0.25-20X1.25 HHGR5	2
8	50592	VB 4 SECT W/PROP STER4GPM DEUTSCH	1
9	0343	WASHER 0.31 USS FLAT ZINC	2
10	0479	CAP SCR 0.25-20X0.75 HHGR5	3
12	50599PC	COVER 3315 HYD PROP H2	1

Mast Assembly (CDT™ Version) - PN 60034

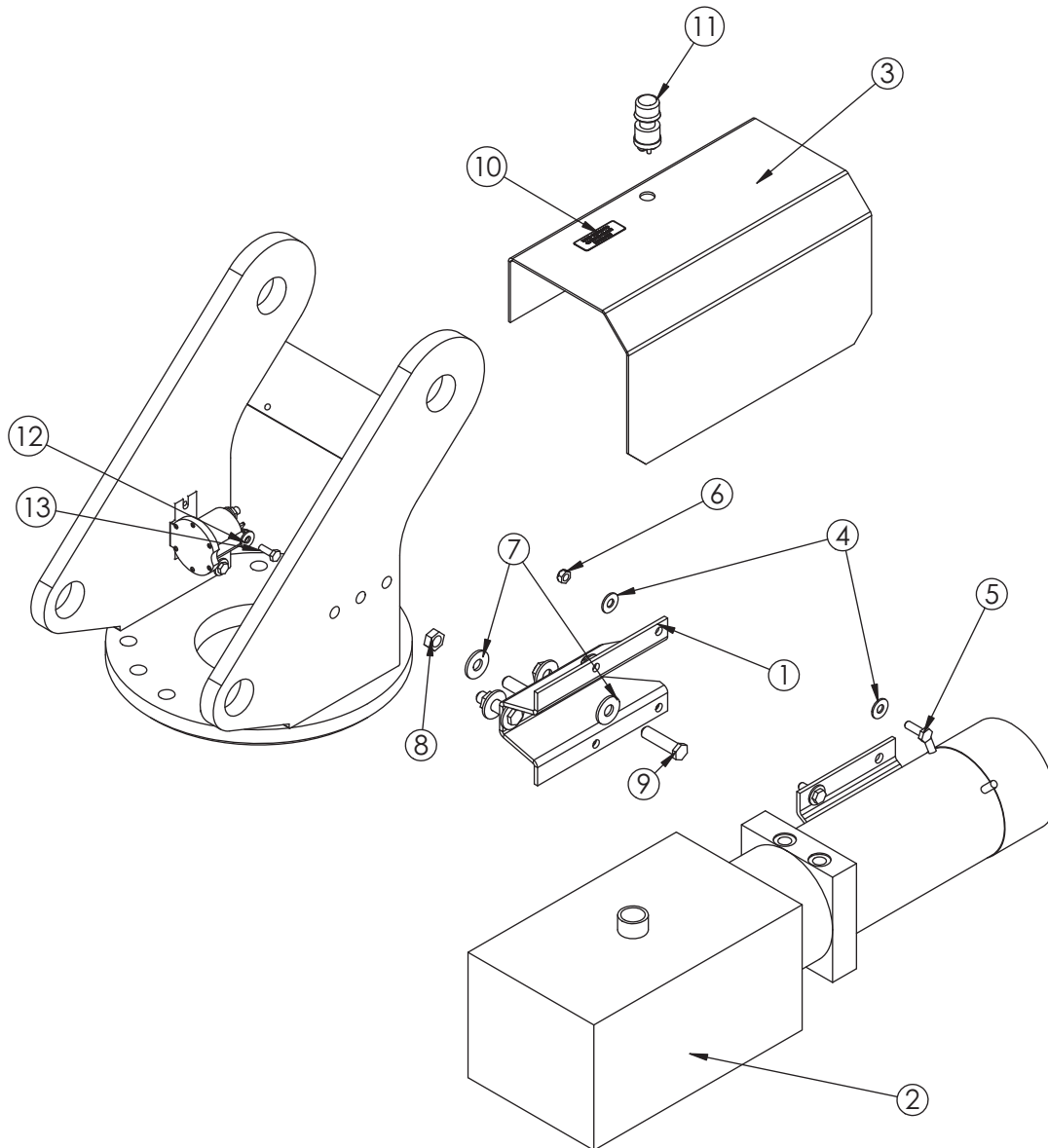
RECEIVER SHOWN
AS REFERENCE



PN 60034

ITEM	PART	DESCRIPTION	QTY.
1	50597	MAST 3315 HYD PROP H2	1
2	C5902	WASHER 0.63 SAE FLAT YELLOW GR8	10
3	C1026	CAP SCR 0.63-11X2.50 HHGR8 ZY	10
4	21810	BUSHING GSI-2426-12 1.50X0.75	4
5	C0930	CAP SCR 0.31-18X3.00 HHGR5	2
6	0340	WASHER 0.25 FLAT	3
7	50592	VB 4 SECT W/PROP STER4GPM DEUTSCH	1
8	0343	WASHER 0.31 USS FLAT ZINC	2
9	0479	CAP SCR 0.25-20X0.75 HHGR5	3
10	24391	CAP SCR 6MMX25MM HH 10.9(GR8)	4
12	50599PC	COVER 3315 HYD PROP H2	1

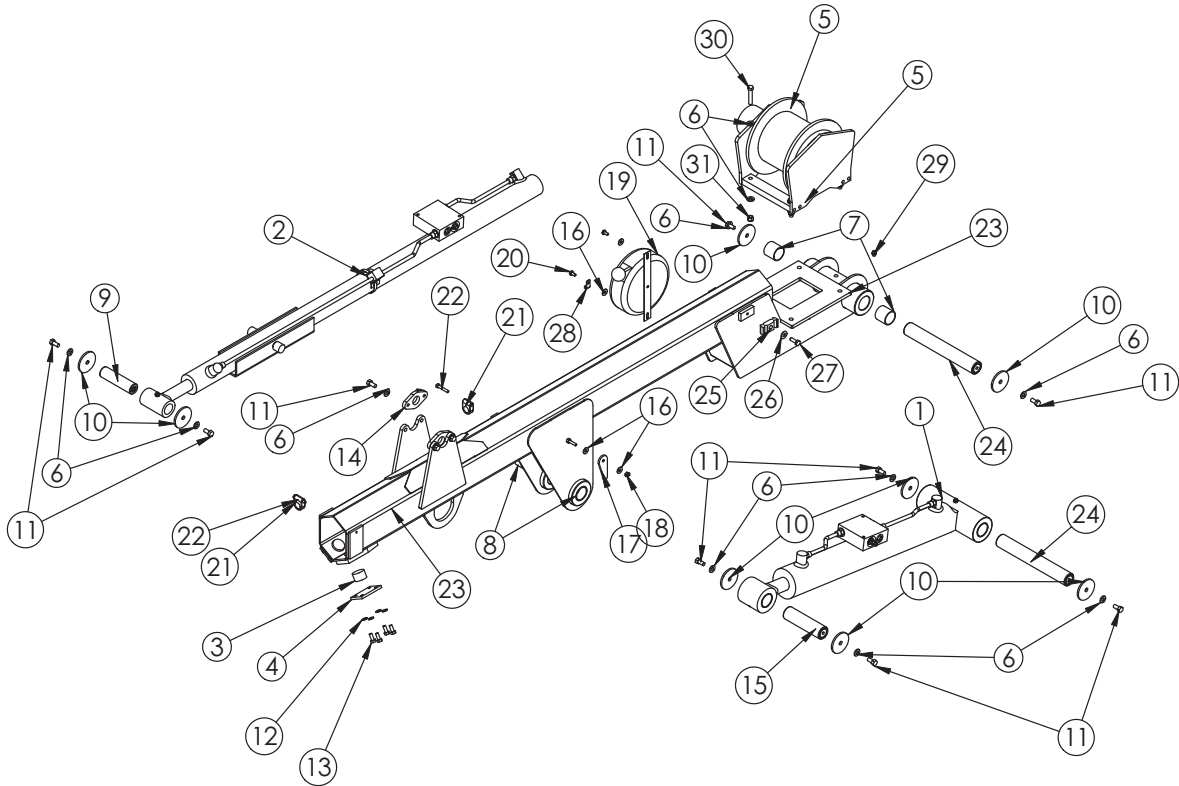
Power Unit Assembly (Electric Version Only) - PN 20432



PN 20432

ITEM	PART	DESCRIPTION	EXPL ODED
1	17132PC	BRKT POWER UNIT 5520	1
2	16994	POWER UNIT 12V 5520 HORIZ	1
3	19997PC	COVER POWER UNIT 5520	1
4	0343	WASHER 0.31 USS FLAT ZINC	8
5	C0922	CAP SCR 0.31-18X1.00 HHGR5	4
6	0342	NUT 0.31-18 HH NYLOC	4
7	0352	WASHER 0.50 USS FLAT ZINC	6
8	C6106	NUT 0.50-13 HHGR5 NYLOC	3
9	0501	CAP SCR 0.50-13X2.00 HHGR5	3
10	18472	DECAL MANUAL OPERATION 5520	1
11	17771	SWITCH PUSH BUTTON 9216-03	1
12	0340	WASHER 0.25 FLAT	2
13	0479	CAP SCR 0.25-20X0.75 HHGR5	2

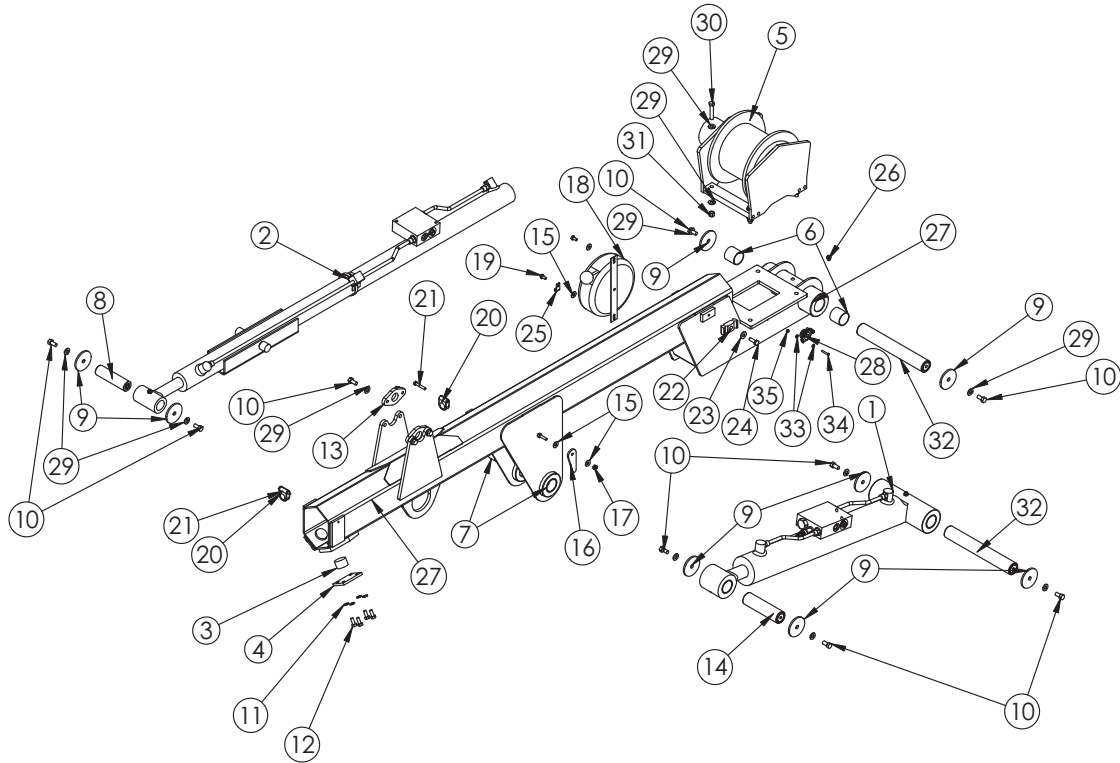
Main Boom Assembly - PN 20000



PN 20000

ITEM	PART	DESCRIPTION	QTY.
1	25676	CYLINDER ASM 3.00X19.88	1
2	25677	CYLINDER ASM 2.00X48.00	1
3	19496	WEAR PAD .88X1.38 RND	2
4	19497PC	PLATE 1ST EXT 3315 WEAR PAD	2
5	19511	WINCH 1600 3315 CRANE	1
6	C6353	WASHER 0.38 SAE FLAT YELLOW GR8	20
7	0067	BUSHING BPC-2426-24 1.50X1.50	2
8	16067	BUSHING QSI-2426-16	2
9	9086ZP	PIN 1.25X4.69 D&T	1
10	7403	PIN CAP 0.44X2.50X0.19	8
11	9843	CAP SCR 0.38-16X0.75 HHGR8 (TRQ 33 FT/LBS)	12
12	5591	WASHER 0.31 SAE FLAT YELLOW GR8	8
13	0420	CAP SCR 0.31-18X0.75 HHGR5	8
14	3267PC	PLATE CYLINDER MTG	2
15	19514ZP	PIN 1.50X5.50 D&T	1
16	0340	WASHER 0.25 FLAT	6
17	19881PC	PLATE ANGLE INDICATOR 3315	2
18	0333	NUT 0.25-20 HHGR5 NYLOC	2
19	11544	CORD REEL 6620	1
20	0478	CAP SCR 0.25-20X0.50 HHGR5	2
21	0337	HOSE CLAMP LN 3160 PP	2
22	0220	CAP SCR 0.25-20 X 1.50 HHGR5	2
23	60035	INNER BOOM 3315 NEW WINCH MNT	1
24	19512ZP	PIN 1.50X10.63 D&T	2
25	8622	CLAMP HOSE/TUBE AG-2	1
26	0343	WASHER 0.31 USS FLAT ZINC	1
27	C0922	CAP SCR 0.31-18X1.00 HHGR5	1
28	C5606	CLAMP 0.25 BLK VINYL	1
29	c1592	ZERK 1/8 NPT STRAIGHT	1
30	C1006	CAP SCR 0.38-16X2.00 HHGR8	4
31	56673	NUT 0.38-16 HHGR8 NYLOC	4

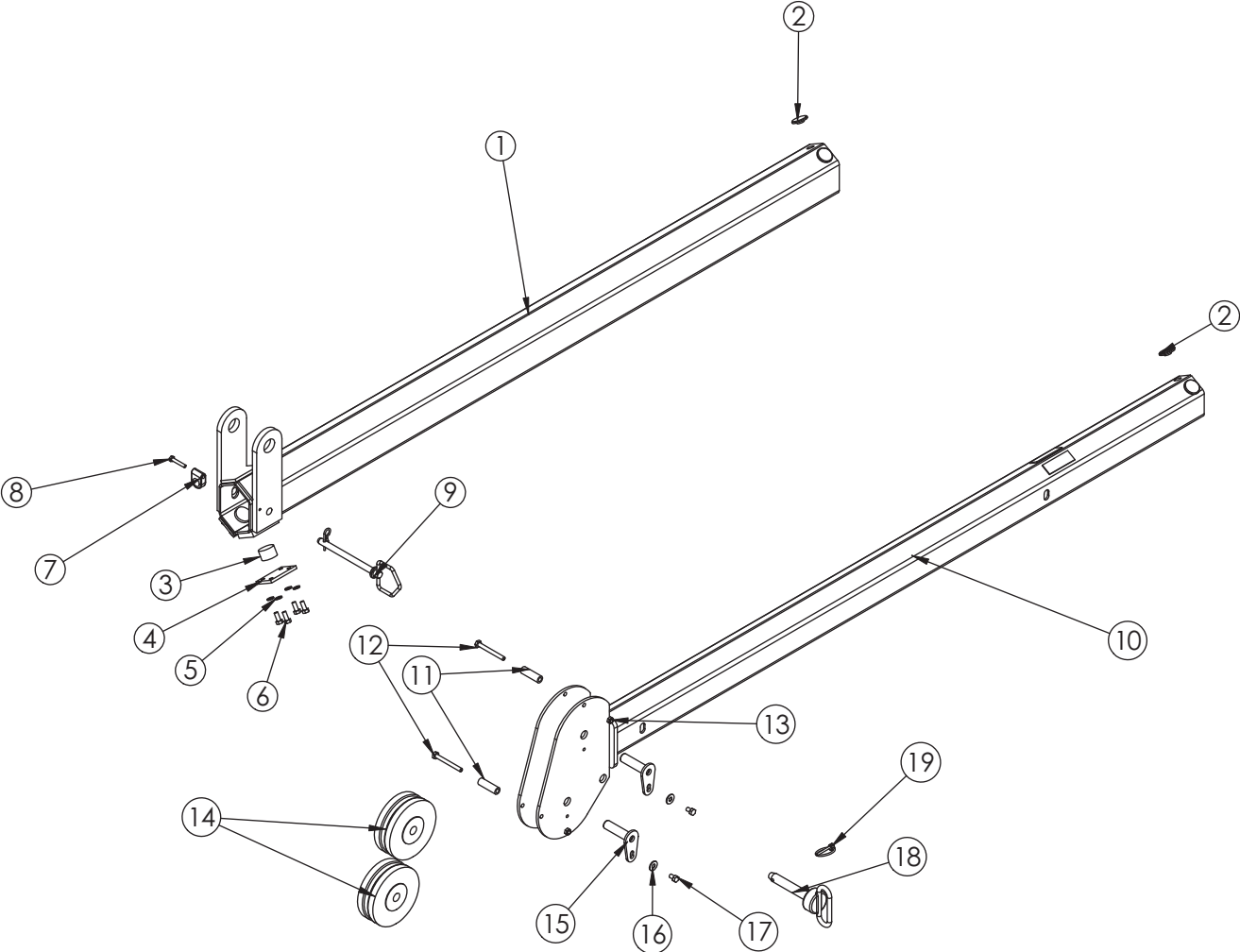
Main Boom Assembly (CDT™ Version) - PN 60039



PN 60039

ITEM	PART	DESCRIPTION	QTY.
1	60040	CYLINDER ASM 3315 CDT	1
2	25677	CYLINDER ASM 2.00X48.00	1
3	19496	WEAR PAD .88X1.38 RND	2
4	19497PC	PLATE 1ST EXT 3315 WEAR PAD	2
5	19511	WINCH 1600 3315 CRANE	1
6	0067	BUSHING BPC-2426-24 1.50X1.50	2
7	16067	BUSHING QSI-2426-16	2
8	9086ZP	PIN 1.25X4.69 D&T	1
9	7403	PIN CAP 0.44X2.50X0.19	8
10	9843	CAP SCR 0.38-16X0.75 HHGR8 (TRQ 33 FT/LBS)	12
11	5591	WASHER 0.31 SAE FLAT YELLOW GR8	8
12	0420	CAP SCR 0.31-18X0.75 HHGR5	8
13	3267PC	PLATE CYLINDER MTG	2
14	19514ZP	PIN 1.50X5.50 D&T	1
15	0340	WASHER 0.25 FLAT	6
16	19881PC	PLATE ANGLE INDICATOR 3315	2
17	0333	NUT 0.25-20 HHGR5 NYLOC	2
18	11544	CORD REEL 6620	1
19	0478	CAP SCR 0.25-20X0.50 HHGR5	2
20	0337	HOSE CLAMP LN 3160 PP	2
21	0220	CAP SCR 0.25-20 X 1.50 HHGR5	2
22	8622	CLAMP HOSE/TUBE AG-2	1
23	0343	WASHER 0.31 USS FLAT ZINC	1
24	C0922	CAP SCR 0.31-18X1.00 HHGR5	1
25	C5606	CLAMP 0.25 BLK VINYL	1
26	c1592	ZERK 1/8 NPT STRAIGHT	1
27	60035	INNER BOOM 3315 NEW WINCH MNT	1
28	53493	INCLINOMETER 60 DEG	1
29	C6353	WASHER 0.38 SAE FLAT YELLOW GR8	20
30	C1006	CAP SCR 0.38-16X2.00 HHGR8	4
31	56673	NUT 0.38-16 HHGR8 NYLOC	4
32	19512ZP	PIN 1.50X10.63 D&T	2
33	18765	WASHER #6 SAE FLAT ZINC	4
34	18618	SCREW #6-32X1.00 PHMS PH	2
35	D0076	NUT #6-32 HH NYLOC SS	2

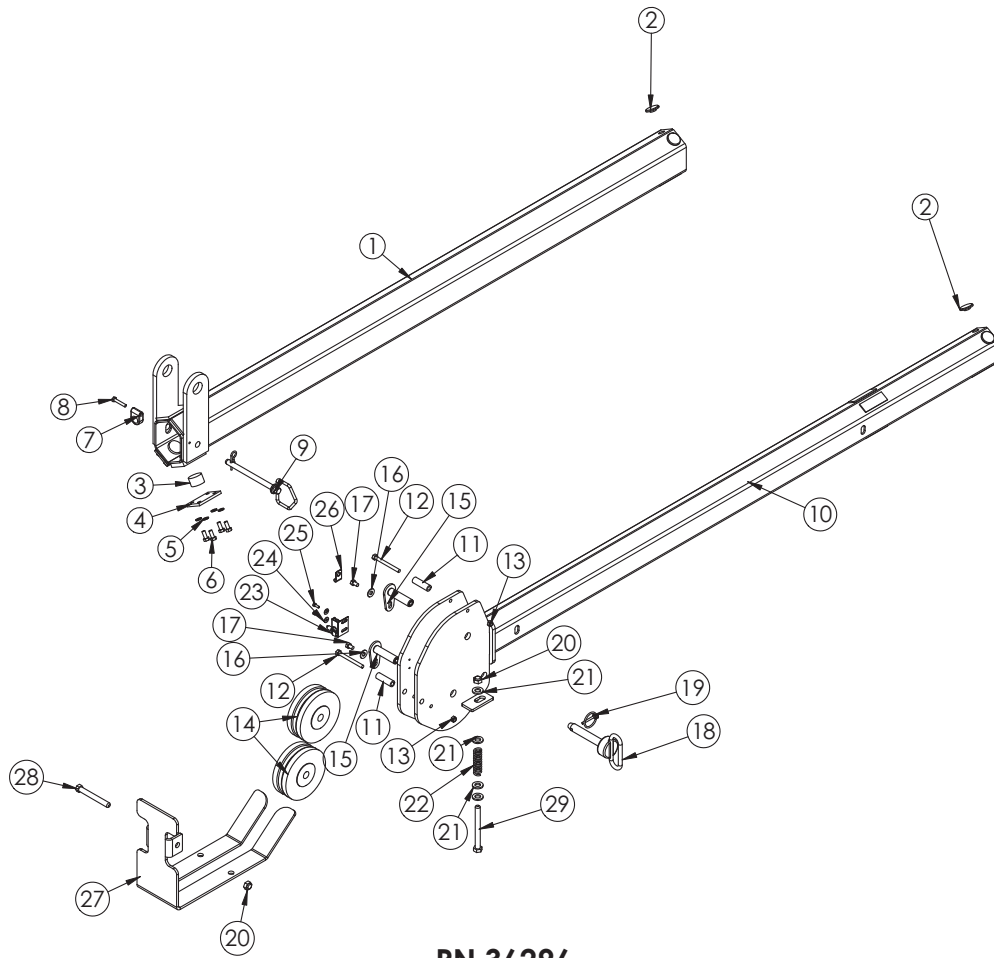
Extension Boom Assembly - PN 20001



PN 20001

ITEM	PART	DESCRIPTION	QTY.
1	19010	EXT BOOM 3315 1ST	1
2	19457	WEAR PAD 0.16X1.38 RND	4
3	19496	WEAR PAD .88X1.38 RND	2
4	19497PC	PLATE 1ST EXT 3315 WEAR PAD	2
5	5591	WASHER 0.31 SAE FLAT YELLOW GR8	8
6	0420	CAP SCR 0.31-18X0.75 HHGR5	8
7	0337	HOSE CLAMP LN 3160 PP	1
8	0220	CAP SCR 0.25-20 X 1.50 HHGR5	1
9	C5629	PIN HITCH 0.50X5.50	1
10	19007	EXT BOOM 2ND 3315	1
11	27719	SPACER BOOM TIP 6620 UHMW	2
12	C0930	CAP SCR 0.31-18X3.00 HHGR5	2
13	0342	NUT 0.31-18 HH NYLOC	2
14	16363	SHEAVE 3515 5.50 DIA .25R/1.94THK	2
15	19996ZP	PIN TEAR DROP .75X2.88	2
16	0343	WASHER 0.31 USS FLAT ZINC	2
17	0484	CAP SCR 0.31-18 X 0.50 HHGR5	2
18	17007	PIN HITCH 0.75X4.00	1
19	5753	PIN 0.19X1.56 LYNCH	1

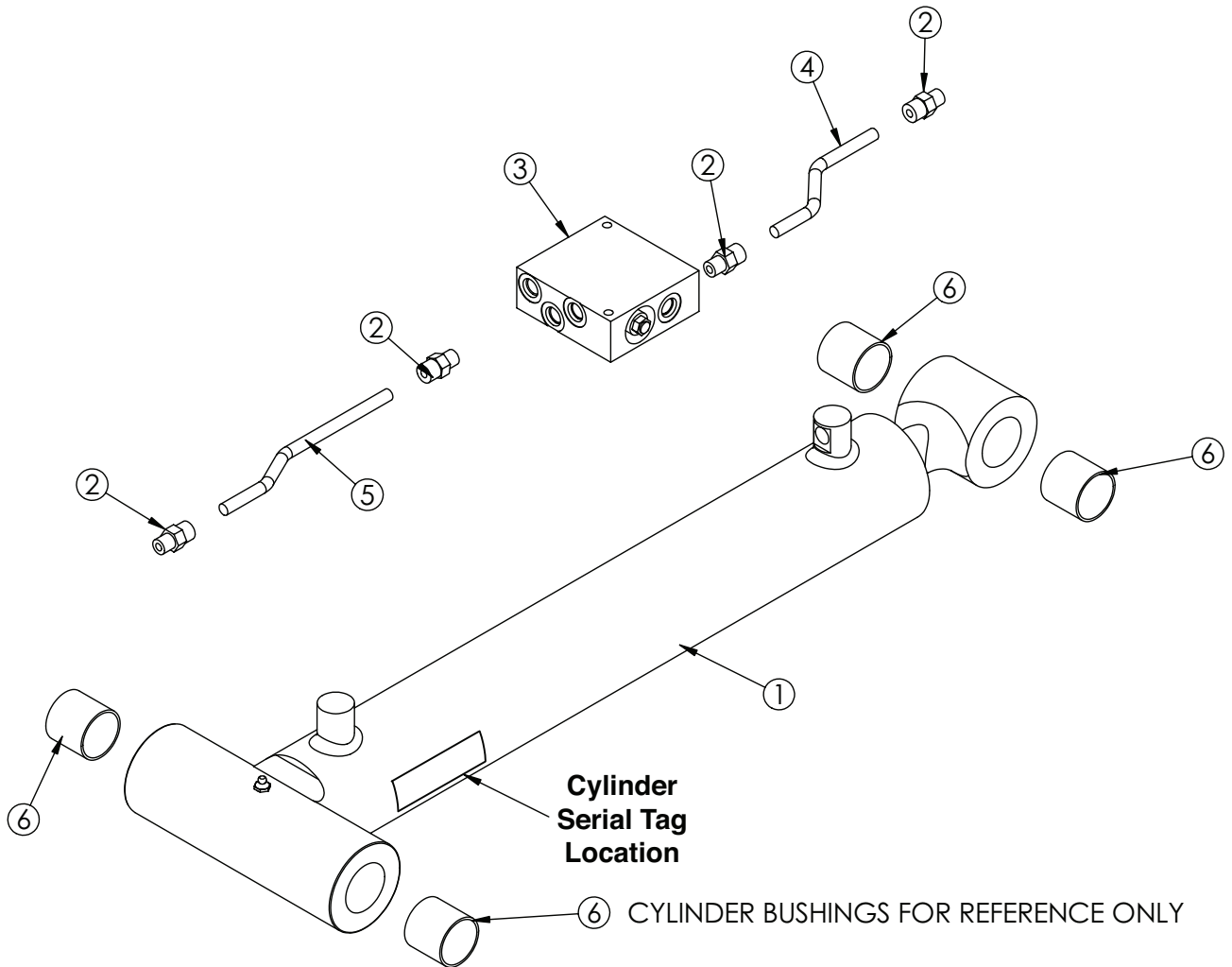
Extension Boom Assembly (Optional) - PN 36296



PN 36296

ITEM	PART	DESCRIPTION	QTY.
1	19010	EXT BOOM 3315 1ST	1
2	19457	WEAR PAD 0.16X1.38 RND	4
3	19496	WEAR PAD .88X1.38 RND	2
4	19497PC	PLATE 1ST EXT 3315 WEAR PAD	2
5	5591	WASHER 0.31 SAE FLAT YELLOW GR8	8
6	0420	CAP SCR 0.31-18X0.75 HHGR5	8
7	0337	HOSE CLAMP LN 3160 PP	1
8	0220	CAP SCR 0.25-20 X 1.50 HHGR5	1
9	C.5629	PIN HITCH 0.50X5.50	1
10	36297	EXT BOOM 2ND 3315 CRADLE A2B	1
11	27719	SPACER BOOM TIP 6620 UHMW	2
12	12178	CAP SCR 0.31-18X3.25 HHGR5	2
13	0342	NUT 0.31-18 HH NYLOC	2
14	16363	SHEAVE 3515 5.50 DIA .25R/1.94THK	2
15	19996ZP	PIN TEAR DROP .75X2.88	2
16	0343	WASHER 0.31 USS FLAT ZINC	2
17	0484	CAP SCR 0.31-18 X 0.50 HHGR5	2
18	17007	PIN HITCH 0.75X4.00	1
19	5753	PIN 0.19X1.56 LYNCH	1
20	C6106	NUT 0.50-13 HHGR5 NYLOC	3
21	D0790	WASHER 0.50 FLAT GR8	8
22	27710	SPRING ANTI 2 BLOCK SUMMIT	2
23	29085	SWITCH LIMIT E1117-B91111-6C	1
24	D0178	WASHER #10 SAE FLAT ZINC	2
25	31132	SCREW #10-24X0.50 SH SS	2
26	31279	CLAMP 0.31 BLK VINYL	1
27	51903PC	PLATE CRADDLE 6620/6628	1
28	0507	CAP SCR 0.50-13X4.50 HHGR5	1
29	C1000	CAP SCR 0.50-13X5.00 HHGR5	2

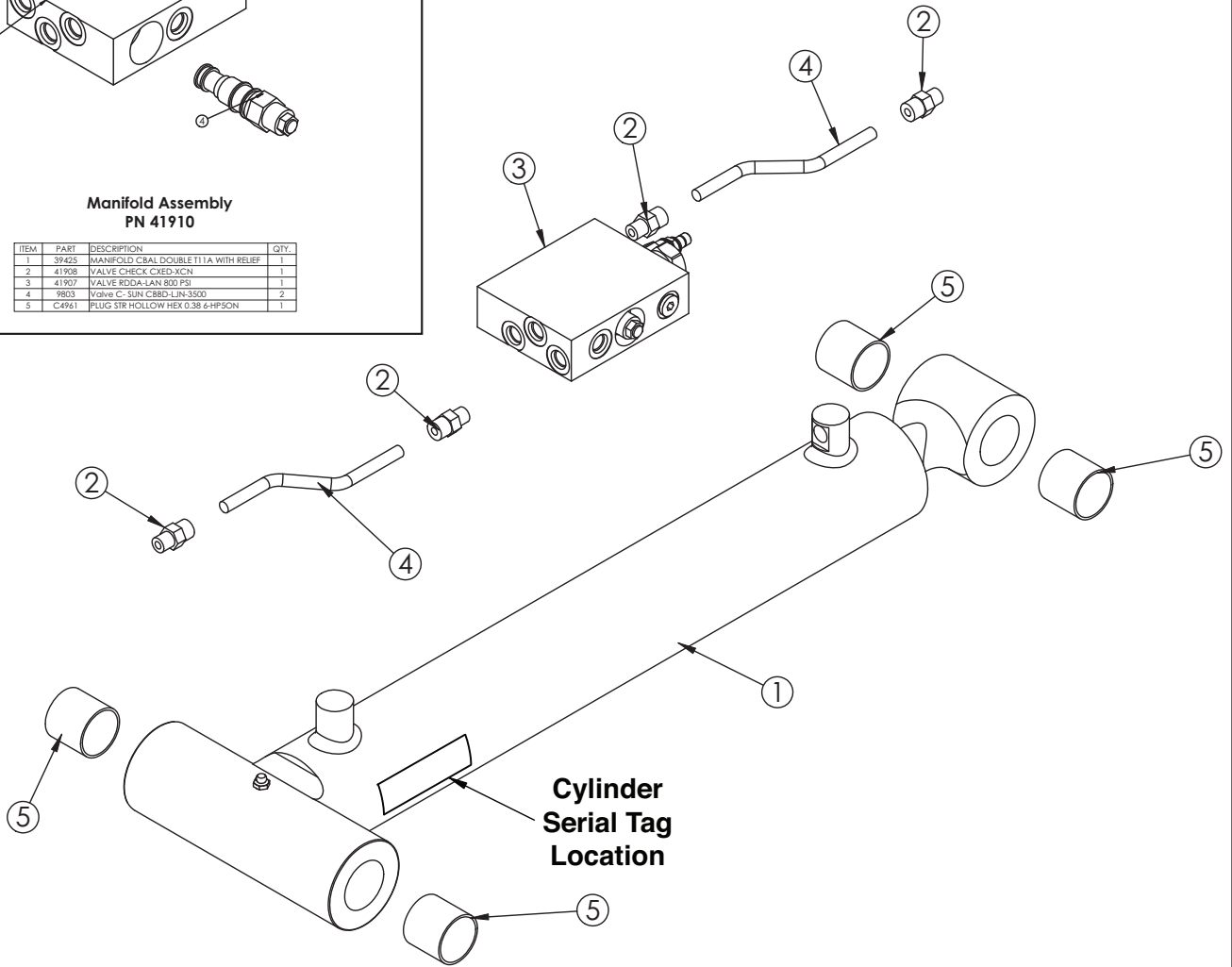
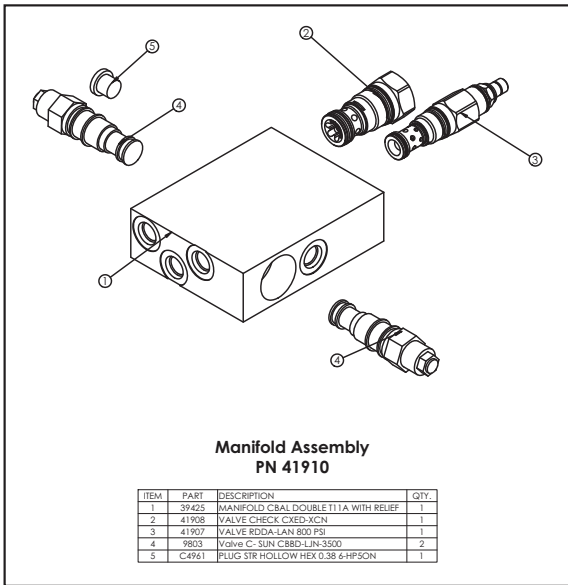
Main Cylinder Assembly - PN 25676



PN 25676

ITEM	PART	DESCRIPTION	QTY.
1	19017	CYLINDER 3.00X19.88	1
2	0279	FTG ADAPT 6-F5OLO-S	4
3	13080	MANIFOLD SINGLE T11A 3500 PSI	1
4	19363	TUBE ASM 0.38X5.69 3315	1
5	15173	TUBE ASM 0.38X7.81 MAIN CYL 5520	1
6	0067	BUSHING BPC-2426-24 1.50X1.50	4

Main Cylinder Assembly (CDT™ Version) - PN 60040

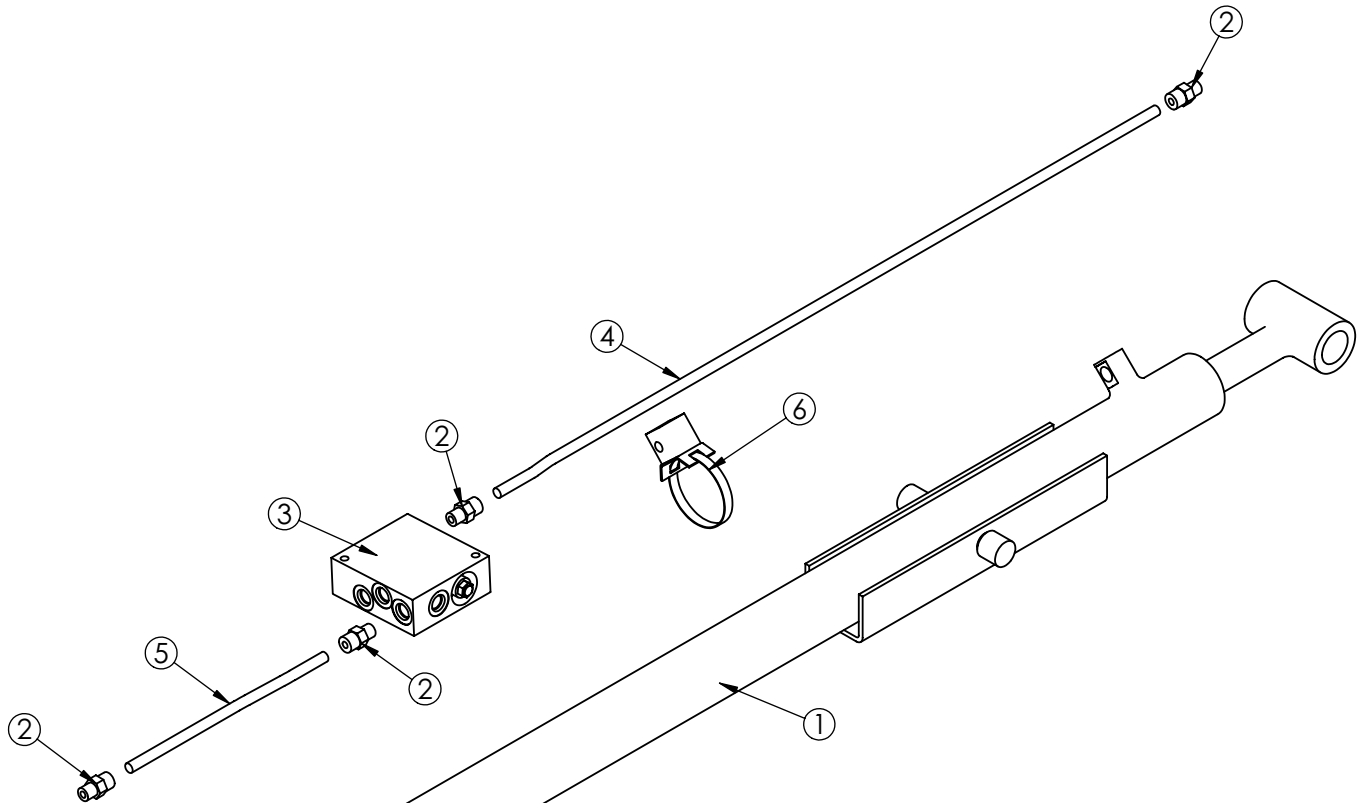


PN 60040

ITEM	PART	DESCRIPTION	QTY.
1	19017	CYLINDER 3.00X19.88	1
2	0279	FTG ADAPT 6-F5OLO-S	4
3	41910	MANIFOLD ASM MAIN CYL CDT	1
4	60233	TUBE ASM 0.38X6.06 3315 CDT YZ	2
5	0067	BUSHING BPC-2426-24 1.50X1.50	4

NOTE:
CYLINDER BUSHINGS FOR REFERENCE ONLY

Extension Cylinder Assembly - PN 25677

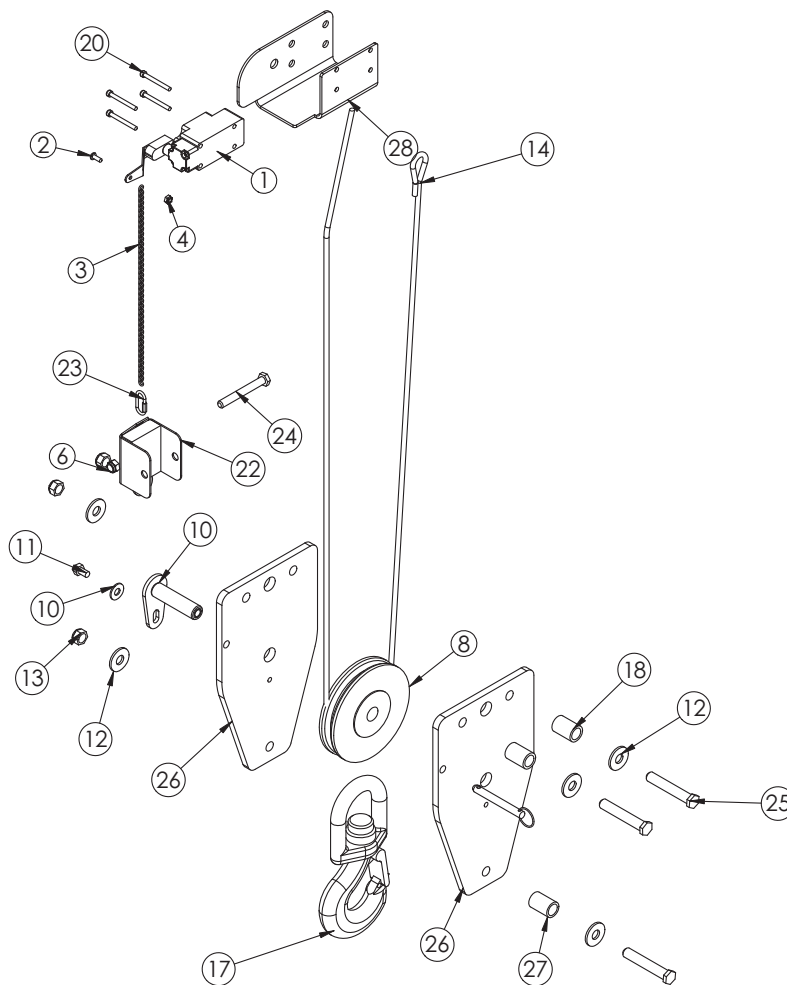


Cylinder
Serial Tag
Location

PN 25677

ITEM	PART	DESCRIPTION	QTY.
1	19507	CYLINDER 2.00 X 48.00	1
2	0279	FTG ADAPT 6-F5OLO-S	4
3	16154	MANIFOLD DOUBLE T11A 3500 PSI	1
4	17009	TUBE ASM 0.38X33.00 EXT CYL 3515	1
5	12158	TUBE ASM 0.38X8.88 MAIN CYL 6620	1
6	14929	CLAMP 0.38 PORT TUBE	1

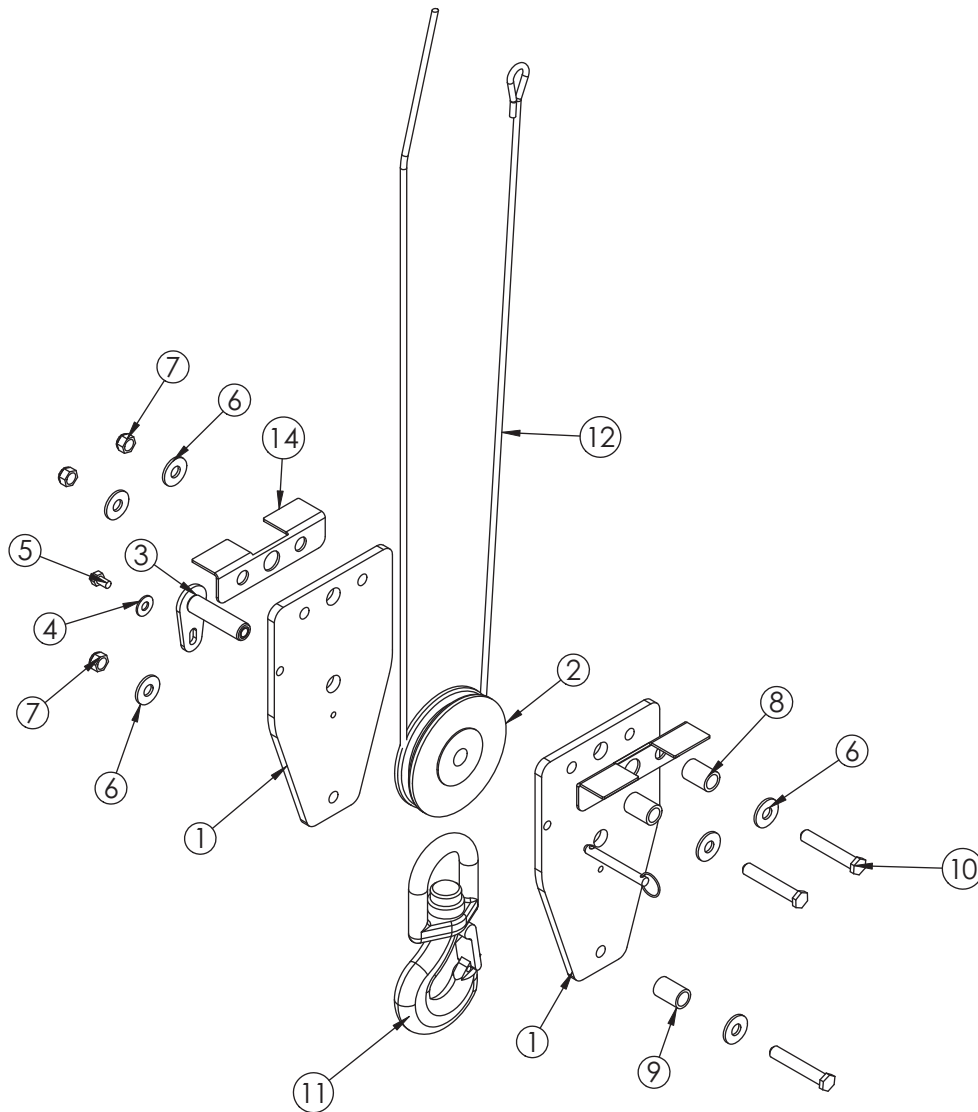
Cable & Hook Assembly - PN 20002



PN 20002

TEM	PART	DESCRIPTION	QTY.
1	11938	SWITCH LIMIT A2B FURNAS 3SE3170	1
2	D1711	CAP SCR #10-24X0.50 BTNHD SS	1
3	10972	CHAIN 0.105 (RM) 2607-21201	1
4	C4956	NUT #10-24 HH NYLOC SS	1
6	0347	NUT 0.38-16 HH NYLOC	1
8	16494	SHEAVE 3515 5.25 DIA .25R/1.12 THK	1
10	0343	WASHER 0.31 USS FLAT ZINC	1
11	0484	CAP SCR 0.31-18 X 0.50 HHGR5	1
12	0352	WASHER 0.50 USS FLAT ZINC	6
13	5468	NUT 0.50-13 HHGR8 NYLOC	3
14	17006	WIRE ROPE 1/4 7X19 GAC 65FT	1
15	9263	PIN .38X3.00 QUICK RELEASE	1
17	25842	HOOK 3 TON SWIVEL CROSBY 1028618	1
18	27810	SPACER 3315 SNATCH BLOCK UHMW	2
20	33749	SCREW #10-24X1.75 SHGR8 ZINC	4
22	35264PC	WEIGHT ANTI 2 BLOCK	1
23	37850	CONNECTOR QUICK LINK 0.13	1
24	C0949	CAP SCR 0.38-16X3.00 HHGR5	1
25	0504	CAP SCR 0.50-13X3.00 HHGR5	3
26	16495PC	PLATE 3515 SNATCH BLOCK	2
27	16607PC	SPACER 3315 SNATCH BLOCK	1
28	33081PC	COVER ANTI 2 BLOCK	1
29	19996ZP	PIN TEAR DROP .75X2.88	1

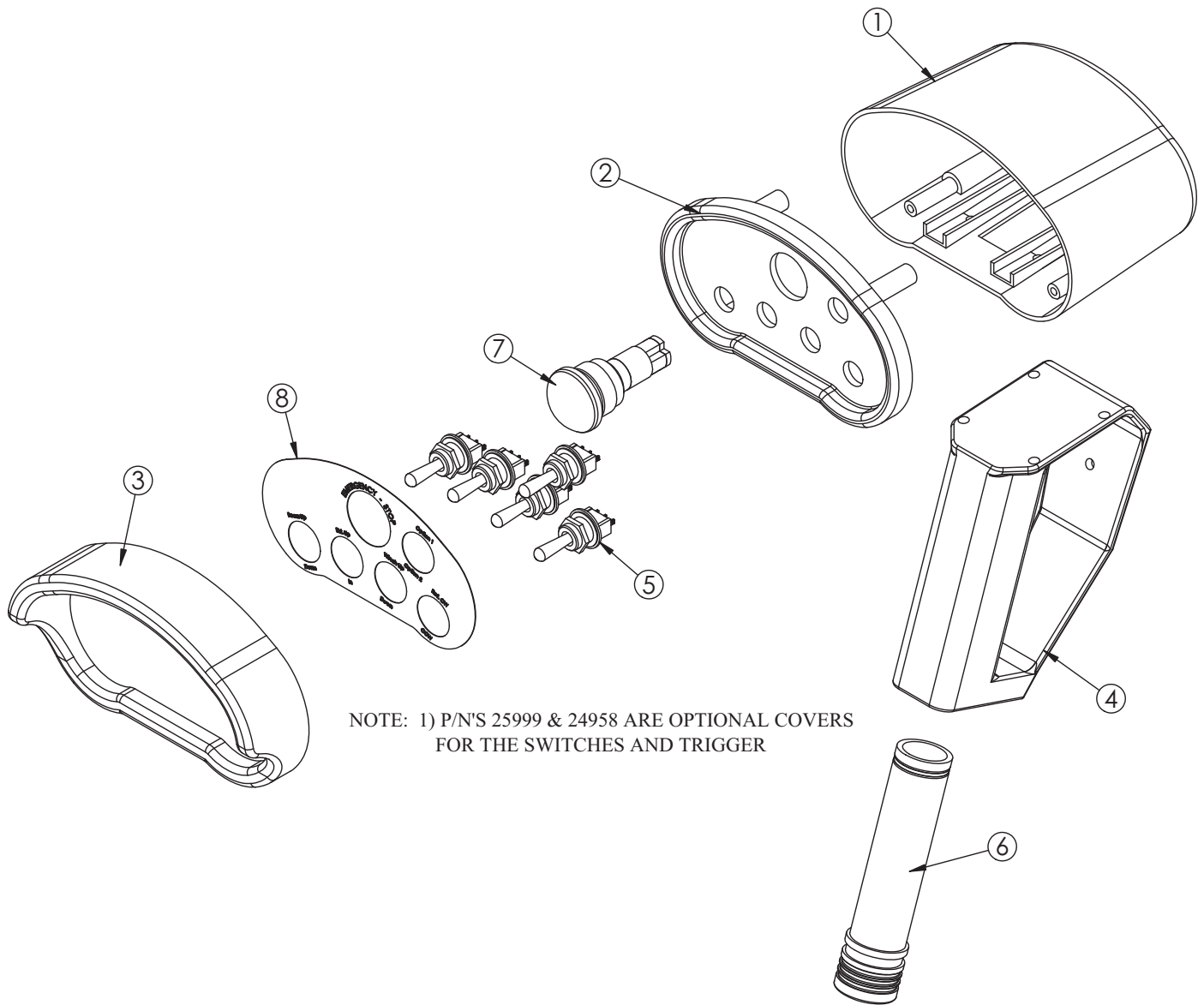
Basket Cable & Hook Assembly (Optional) - PN 41070



PN 41070

ITEM	PART	DESCRIPTION	QTY.
1	16495PC	PLATE 3515 SNATCH BLOCK	2
2	16494	SHEAVE 3515 5.25 DIA .25R/1.12 THK	1
3	19996ZP	PIN TEAR DROP .75X2.88	1
4	0343	WASHER 0.31 USS FLAT ZINC	1
5	0484	CAP SCR 0.31-18 X 0.50 HHGR5	1
6	0352	WASHER 0.50 USS FLAT ZINC	6
7	5468	NUT 0.50-13 HHGR8 NYLOC	3
8	27810	SPACER 3315 SNATCH BLOCK UHMW	2
9	16607PC	SPACER 3315 SNATCH BLOCK	1
10	0504	CAP SCR 0.50-13X3.00 HHGR5	3
11	25842	HOOK 3 TON SWIVEL CROSBY 1028618	1
12	17006	WIRE ROPE 1/4 7X19 GAC 65FT	1
13	9263	PIN .38X3.00 QUICK RELEASE	1
14	41444	BRACKET SNATCH BLOCK CRADLEA2B 3315	2

Radio Transmitter Assembly



NOTE: 1) P/N'S 25999 & 24958 ARE OPTIONAL COVERS FOR THE SWITCHES AND TRIGGER

ITEM	PART	DESCRIPTION	QTY.
1	20088	CONTROL HANDLE HOUSING 4 FCTN HET	1
2	51830	CONTROL HANDLE FACE PLT 5 FCTN	1
3	24385	GUARD RADIO SWITCH 4 FCTN	1
4	50932	CONTROL HANDLE GRIP LESS TRIGGER HET H2	1
5	22600	SWITCH TOGGLE HET RADIO 63019300	5
6	35441	BATTERY TUBE AA HETRONIC RADIO	1
7	16975	SWITCH E STOP ASM HETRONIC RADIO	1
8	51831	DECAL CONTROL HANDLE 5 FCTN	1

Chapter 4 - Replacement Parts

PART#	DESCRIPTION
D1204	HYDRAULIC SWING MOTOR
25375	RELIEF VALVE
25376	SEAL KIT - RELIEF VALVE
25377	SOLENOID VALVE TAND G04571
25378	SOLENOID VALVE OPEN G04591
25379	SEAL KIT - SOLENOID VALVE
55216	COIL - 12VDC
13080	MANIFOLD ASM - MAIN CYLINDER
9803	C-BALANCE VALVE
11991	PLUG - C-BALANCE
16154	MANIFOLD ASM - EXTENSION CYLINDER
11378	SEAL KIT - MAIN LIFT CYLINDER
1099	SEAL KIT - EXTENSION CYLINDER
49314	PRESSURE SWITCH
6397	HYD PRESSURE GAUGE
C2027	O'RING - # 4 FACE SEAL
C2028	O'RING - # 6 FACE SEAL
D1245	O'RING - # 4 SAE
D1246	O'RING - # 6 SAE
19363	TUBE ASM - MAIN CYLINDER
15173	TUBE ASM - MAIN CYLINDER
12158	TUBE ASM - EXTENSION CYLINDER
17009	TUBE ASM - EXTENSION CYLINDER
21810	BUSHING 1.50" X 0.75"
0067	BUSHING 1.50" X 1.50"
16067	BUSHING 1.50" X 1.00"
19496	WEAR PAD 0.88" X 1.38" RND
19457	WEAR PAD 0.25" X 1.38" RND
7403	PIN CAP .44 X 2.50 X .25
C6353	WASHER 0.38 FLAT GR8
9843	CAP SCR. 0.38-16 X 0.75"
16363	SHEAVE
16494	SHEAVE
17006	WIRE ROPE
17007	HITCH PIN 0.75" X 4.00"
C5629	HITCH PIN 0.50" X 5.50"
9263	QUICK RELEASE PIN .38 X 3.00"
11938	LIMIT SWITCH
31670	WEIGHT & CHAIN ASSY - ANTI-2-BLOCK
11544	CORD REEL
20436	CONTOLLER HANDLE ASM.
4422	PUSH BUTTON SWITCH - HANDLE ASM.
6394	TOGGLE SWITCH -MOMENTARY (CONTROLLER HANDLE ASM.)
39784	RADIO REMOTE SYSTEM (TRANSMITTER & RECEIVER)
35441	BATTERY TUBE (AA) HOLDER (HETRONIC RADIO)
16975	E-STOP SWITCH (HETRONIC RADIO)
22600	TOGGLE SWITCH (HETRONIC RADIO)
50932	HANDLE / TRIGGER ASM (HETRONIC RADIO)
35916	BACK UP CABLE CONTROL - HETRONIC RADIO SYSTEM
24956	12V SOLENOID (12V POWER UNIT ASSEMBLY)
17771	PUSH BUTTON (12V POWER UNIT ASSEMBLY)
25842	HOOK - 3 TON
10709	SAFETY LATCH FOR 3 TON HOOK
C1592	GREASE ZERK
4460	GEAR BEARING GREASE - MOLUBE (Open Teeth)
28485	PRESSURE TRANSDUCER (CDT Models only)



Limited Warranty Statement

Stellar Industries, Inc. (Stellar) warrants products designed and manufactured by Stellar to be free from defects in material and workmanship under proper use and maintenance. Products must be installed and operated in accordance with Stellar's written instructions and capacities. This warranty shall cover the following:

Stellar Cranes, Stellar Hooklift Hoists, Stellar Cable Hoists, Stellar Container Carriers, Stellar Service Trucks, and Stellar X-Tra-Lift Systems:

Twelve (12) month warranty on parts from the date recorded by Stellar as the in-service date, not to extend beyond twenty-four (24) months from date of manufacture.

Twelve (12) month repair labor from the date recorded by Stellar as the in-service date, not to extend beyond twenty-four (24) month from date of manufacture, and

Thirty-six (36) month warranty on all Stellar Manufactured structural parts from the date recorded by Stellar as the in-service date, not to extend beyond forty-eight (48) months from date of manufacture.

Stellar Tarper Systems:

Twelve (12) month warranty on parts from the date recorded by Stellar as the in-service date, not to extend beyond twenty-four (24) months from date of manufacture and

Three (3) month repair labor from the date recorded by Stellar as the in-service date, not to extend beyond fifteen (15) month from date of manufacture.

The in-service date will be derived from the completed warranty registration card. In the event a warranty registration card is not received by Stellar, the factory ship date will be used.

Stellar's obligation under this warranty is limited to, and the sole remedy for any such defect shall be, the repair and/or replacement (at Stellar's option) of the unaltered part and/or component in question. Stellar after-sales service personnel must be notified by telephone, fax, or letter of any warranty-applicable damage within fourteen (14) days of its occurrence. If at all possible, Stellar will ship the replacement part within 24-hours of notification by the most economical, yet expedient, means possible. Expedited freight delivery will be at the expense of the owner.

Warranty claims must be submitted and shall be processed in accordance with Stellar's established warranty claim procedure. Stellar after-sales service personnel must be contacted prior to any warranty claim. A return materials authorization (RMA) account number must be issued to the claiming party prior to the return of any warranty parts. Parts returned without prior authorization will not be recognized for warranty consideration. All damaged parts must be returned to Stellar freight prepaid; freight collect returns will be refused. Freight reimbursement of returned parts will be considered as part of the warranty claim.

Warranty service will be performed by any Stellar new equipment distributor, or by any Stellar-recognized service center authorized to service the type of product involved, or by the Stellar factory in the event of a direct sale. At the time of requesting warranty service, the owner must present evidence of date of delivery of the product. The owner shall be obligated to pay for any overtime labor requested of the servicing company by the owner, any field service call charges, and any towing and/or transportation charges associated with moving the equipment to the designated repair/service provider.

All obligations of Stellar and its authorized dealers and service providers shall be voided if someone other than an authorized Stellar dealer provides other than routine maintenance service without prior written approval from Stellar. In the case repair work is performed on a Stellar-manufactured product, original Stellar parts must be used to keep the warranty in force. The warranty may also be voided if the product is modified or altered in any way not approved, in writing, by Stellar.

The owner/operator is responsible for furnishing proof of the date of original purchase of the Stellar product in question. Warranty registration is the ultimate responsibility of the owner and may be accomplished by the completion and return of the Stellar product registration card provided with the product. If the owner is not sure of registration, he is encouraged to contact Stellar at the address below to confirm registration of the product in question. This warranty covers only defective material and workmanship. It does not cover depreciation or damage caused by normal wear and tear, accident, mishap, untrained operators, or improper or unintended use. The owner has the obligation of performing routine care and maintenance duties as stated in Stellar's written instructions, recommendations, and specifications. Any damage resulting from owner/operator failure to perform such duties shall void the coverage of this warranty. The owner will pay the cost of labor and supplies associated with routine maintenance.

The only remedies the owner has in connection with the breach or performance of any warranty on the Stellar product specified are those set above. In no event will Stellar, the Stellar distributor/dealer, or any company affiliated with Stellar be liable for business interruptions, costs of delay, or for any special, indirect, incidental, or consequential costs or damages. Such costs may include, but are not limited to, loss of time, loss of revenue, loss of use, wages, salaries, commissions, lodging, meals, towing, hydraulic fluid, or any other incidental cost.

All products purchased by Stellar from outside vendors shall be covered by the warranty offered by that respective manufacturer only. Stellar does not participate in, or obligate itself to, any such warranty.

Stellar reserves the right to make changes in design or improvement upon its products without imposing upon itself the same upon its products theretofore manufactured.

This warranty will apply to all Stellar Cranes, Stellar Hooklift Hoists, Stellar Cable Hoists, Stellar Container Carriers, Stellar Service Trucks, Stellar X-Tra-Lift Systems, and Stellar Tarper Systems shipped from Stellar's factory after January 1st, 2010. The warranty is for the use of the original owner only and is not transferable without prior written permission from Stellar.

THIS WARRANTY IS EXPRESSLY IN LIEU OF ANY OTHER WARRANTIES, EXPRESS OR IMPLIED, INCLUDING ANY WARRANTY OF MERCHANTABILITY OR FITNESS FOR A PARTICULAR PURPOSE. REMEDIES UNDER THIS WARRANTY ARE LIMITED TO THE PROVISION OF MATERIAL AND SERVICES, AS SPECIFIED HEREIN. STELLAR INDUSTRIES, INC. IS NOT RESPONSIBLE FOR INCIDENTAL OR CONSEQUENTIAL DAMAGES.

Revision Date: February 2010

Document Number: 37040