



Technical Manual

PERSONNEL BASKET

PBAF-350 Aluminum/Folding



Serial No. _____

(PATENT PENDING)

605001515-0320-B

Mailing Address:
P.O. Box 580697
Tulsa, OK 74158

Phone: 1-800-777-2760
Fax: (918) 269-6688
<http://www.autocrane.com>

Physical Address:
4707 N. Mingo Rd.
Tulsa, OK 74117-5904

At the time of publishing, this manual is accurate to the best of our knowledge. Auto Crane reserves the right to change any or all items, components, and parts, necessary for any reason. This right does not obligate Auto Crane to immediately update the manual. If in doubt, please call your local Auto Crane distributor for the most up-to-date information.

Auto Crane issues a limited warranty with each unit sold. See warranty pages at the end of the manual.

Table of Contents

SECTION		PAGE
1	Safety Tips And Precautions	4
2	Introduction	6
3	General Specifications	7
	3.1 Dimensions	7
	3.2 Capacity	7
4	Qualifications and Operating Practices	8
5	Personnel Basket Deployment	9
6	Maintenance and Inspection	17
	6.1 General	17
	6.2 Frequency	17
	6.3 Test Procedure	17
	6.4 Records	18
	6.5 Adjustments and Repairs	18
	6.6 Modifications	18
	6.7 Brake Test/Adjustment	18
7	Personnel Basket Storage Installation	20
8	Adapter Kit Installation	22
9	General Dimensions	24
10	Decal Layout	27
11	General Assembly	29
12	Folding Alum. Assembly	30
13	Floor Assembly	35
14	Stalk Assembly	38
15	Crown Adapter Kit	43
16	Storage Kit	48

1 Safety Tips and Precautions

DANGER

Indicates a hazardous situation which, if not avoided, will result in death or serious injury.

WARNING

Indicates a hazardous situation which, if not avoided, could result in death or serious injury.

CAUTION

Indicates a hazardous situation which, if not avoided, could result in minor or moderate injury.

NOTICE

Indicates information considered important, but not hazard-related.

NOTICE

Operators are required to read manual prior to operation and be familiar with crane operation.

WARNING

Auto Crane Personnel Basket is to only be used in conjunction with Auto Crane brand cranes.

WARNING

Do not weld, modify, or use unauthorized components on any Auto Crane unit! This will void any warranty or liability. Also, failure of the personnel basket may result.

WARNING

Personnel platforms not to be used in winds in excess of 20 mph (32.2 km/h) at the hoisted platform height, electric storms, or other adverse weather conditions that could affect the safety of personnel.

WARNING

Do not allow the total weight of the lifted load, including rigging, platform, personnel, tools, and material, to exceed 50% of the crane's load capacity, or 350 lbs total, whichever is less.

WARNING

Perform a trial lift prior to lifting personnel with the platform on each shift and after any change of setup location. These lifts shall be used to ascertain that the personnel basket setup and configuration is correct, load capacities are adequate, and no hazardous interferences exist and to further demonstrate the operator's competence. For rail-mounted cranes where travel of the crane is required during personnel lifting, the trial lift shall include all required travel of the crane.

WARNING

Do not lift any other loads, on any other load lines, while conducting a personnel lift.

WARNING

Have audible and visual alert devices in the platform for use in an emergency (i.e., air horns or strobe lights).

Safety Tips and Precautions 1

WARNING

Maximum lifting capacity of 350 lbs is not to be exceeded with personnel basket attached. This includes the operator along with any tools, parts, and equipment.

WARNING

Do not operate personnel basket without all proper decals in place and legible.

WARNING

Do not stand, sit on, or work from the top or intermediate rail, or use any other device to enhance vertical height working capability. Operator is to work from basket floor while inside personnel basket.

WARNING

Brake must be in ENGAGED position when personnel basket is stopped, and prior to beginning of work.

WARNING

Brake should be in the DISENGAGED or DAMPENED position when moving the personnel basket in order to lessen the possibility for a non-level standing surface.

WARNING

Basket personnel must wear a safety harness with a lanyard attached to anchor point provided. Personnel basket door must be securely latched.

DANGER

Do not use crane or basket within 10 feet of electrical lines carrying up to 50,000 volts, one foot additional clearance is required for every additional 30,000 volts or less.

DANGER

Operating the basket without all latches in place and fully engaged may result in serious injury or death.

2 Introduction

NOTICE

Keep this manual with the personnel basket at all times.

Auto Crane products are designed to provide many years of safe, trouble-free, dependable service when properly used and maintained.

To assist you in obtaining the best service from your personnel basket and to avoid untimely failure, this manual provides operating and service instructions. It is specifically recommended that all operating and service personnel consider this manual as mandatory material for reading and study before operating or servicing Auto Crane products. It is highly recommended that equipment operators, managers, and supervisors also read this manual.

For your convenience, the overall dimensions of the personnel basket are included on the General Dimension Drawing.

Auto Crane Company issues a limited warranty certificate with each unit sold. See last page for warranty.

It is Auto Crane Company policy to handle all warranty claims we receive as promptly as possible. If a warranty claim involves discrepant material or workmanship, Auto Crane will take immediate corrective action. It is understandable that Auto Crane cannot assume responsibility or liability when it is obvious that our products have been abused, misused, overloaded, or otherwise damaged by inexperienced persons trying to operate the equipment.

NOTICE

Auto Crane will not assume responsibility or liability for any modifications or changes made to unit, or installation of component parts without written authorization.

Auto Crane maintains a strong distributor network and a knowledgeable customer service department. In most cases, an equipment problem is solved via phone conversation with our customer service department. The customer service department also has the ability to bring a local distributor, a regional sales manager, or a factory serviceman into the solution of an equipment problem.

Should you require any assistance not given in this manual, we recommend that you consult your nearest Auto Crane Distributor. Our distributors sell authorized parts and have service departments that can solve almost any needed repair. This manual does not cover all maintenance, operating, or repair instructions pertinent to all possible situations.

If you require additional information, please contact Auto Crane at the following telephone number: **1-800-777-2760**

The information contained in this manual is in effect at the time of this printing. Auto Crane reserves the right to update this material without notice or obligation.

Auto Crane's extensive Research and Development Program allows our customers to use the best equipment on the market. Our Engineering Staff and our knowledgeable sales people are always available to our customers in solving crane and winch-type application problems. When in doubt, call the Auto Crane factory.

3.1 DIMENSIONS

- Weight: 235 lbs
- Basket Folded: 47-1/2" x 38-7/8" x 15-5/8"
- Basket Unfolded: 45-15/16" x 30-3/4" x 31-3/4"
- Stalk Folded: 47-1/4" x 24-3/16" x 20-3/4"
- Stalk Unfolded: 49-1/8" x 24-3/16" x 34-13/16"

3.2 CAPACITY

- 350 lbs
- Maximum Capacity: 1 person

4 Qualifications and Operating Practices

NOTICE

Reference all applicable standards for complete qualification requirements.

Vehicle must be parked and outriggers must be fully deployed before installation and operation of the basket.

Operate all controls slowly for smooth basket motion. Verify controls return to neutral position after operation

Never operate the basket over ground personnel.

Never move vehicle until basket, crane, and outriggers are properly stowed and secure.

Never drop tools or materials from the basket

Store transmitter in holder when not in use.

Personnel platform not to be used in winds in excess of 20 mph (32.2 km/h) at the hoisted platform height, electric storms, or other adverse weather conditions that could affect the safety of personnel.

Do not allow the total weight of the lifted load, including rigging, platform, personnel, tools, and material, to exceed 50% of the crane's weight capacity, or 350 lbs total, whichever is less.

Perform a trial lift prior to lifting personnel with the platform on each shift and after any change of setup location. These lifts shall be used to ascertain that the personnel basket setup and configuration is correct, load capacities are adequate, and no hazardous interferences exist and to further demonstrate the operator's competence. For rail-mounted cranes where travel of the crane is required during personnel lifting, the trial lift shall include all required travel of the crane.

Do not lift any other loads, on any other load lines, while conducting a personnel lift.

Have audible and visual alert devices in the platform for use in an emergency (i.e., air horns or strobe lights).

Keep all body parts inside the platform during raising, lowering, and positioning unless performing the duties of a designated signal person.

NOTICE

Highly recommended disabling hoist or running single-axis during personnel basket operation.

Personnel Basket Deployment 5

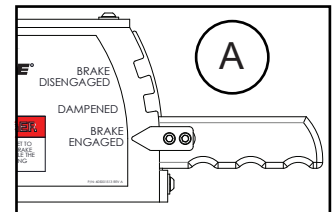
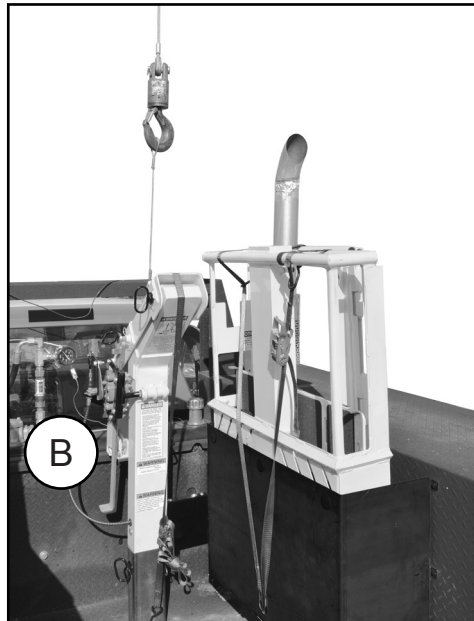
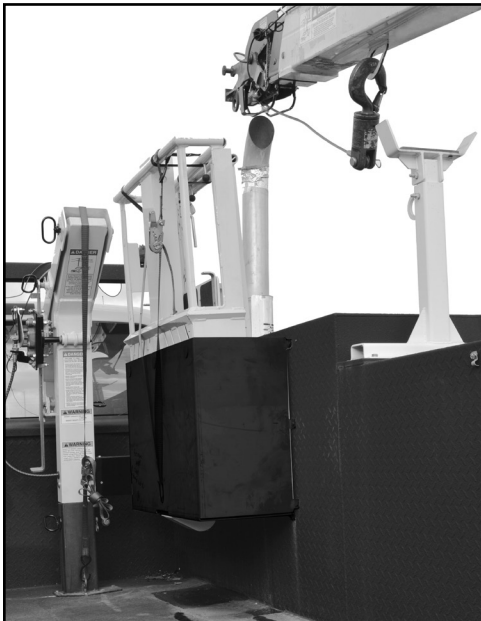
NOTICE

Reference crane manual for proper outrigger deployment.

1. Deploy outriggers and level out truck/crane.



2. Move crane above the top of the upper stalk and lower cable to reach the upper stalk lanyard. Tighten the slack out of the lanyard and make sure the (A) brake is engaged. (B) Remove adaptor locking pin from stalk.

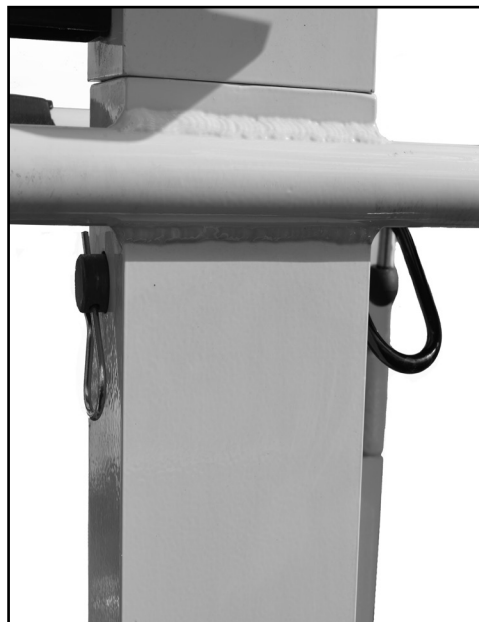
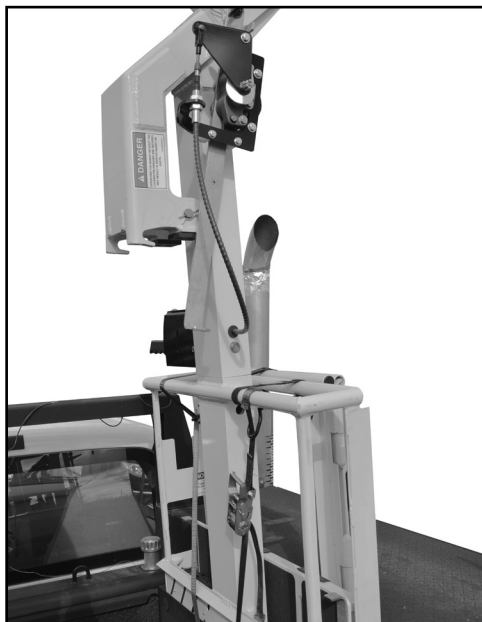


5 Personnel Basket Deployment

3. Remove the stowing ratchet strap and retaining pin from stalk assembly. Lift upper stalk out of stalk storage.



4. Attach stalk assembly to personnel basket with retaining pin.



Personnel Basket Deployment 5

5. Unstrap ratchet strap holding basket and lift from basket storage. Rotate crane and position outside bed area to proceed with deployment. Extend boom a minimum of four feet.

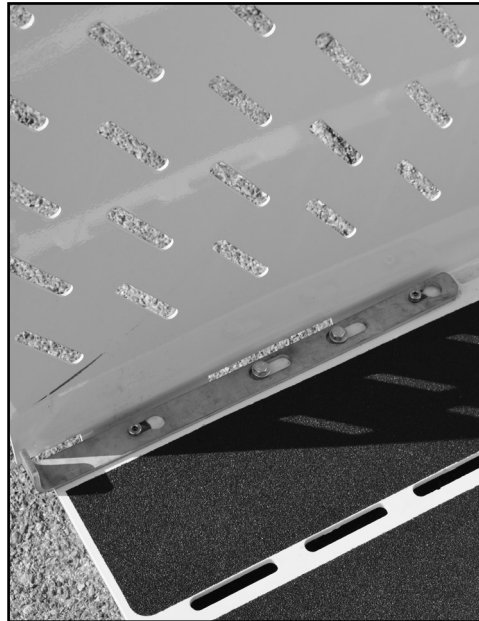


6. Lower basket approximately one foot above ground level. Unstrap velcro straps, unfold both sides, and lower floor slowly. Do not allow floor to fall under its own weight.



5 Personnel Basket Deployment

7. Lower basket onto ground, lock side panel locking bars, and lock floor with rail locks.

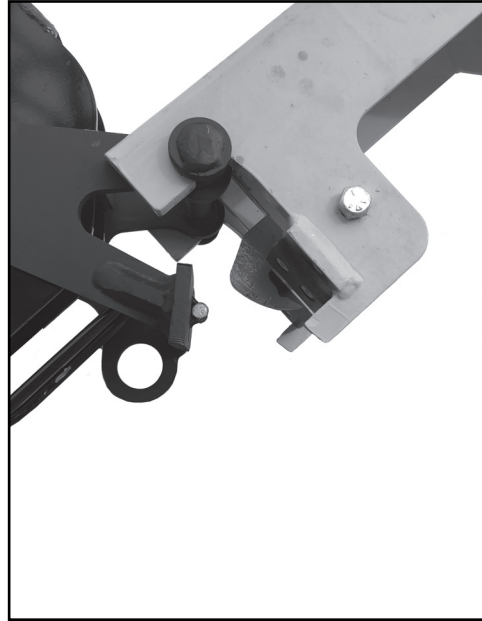
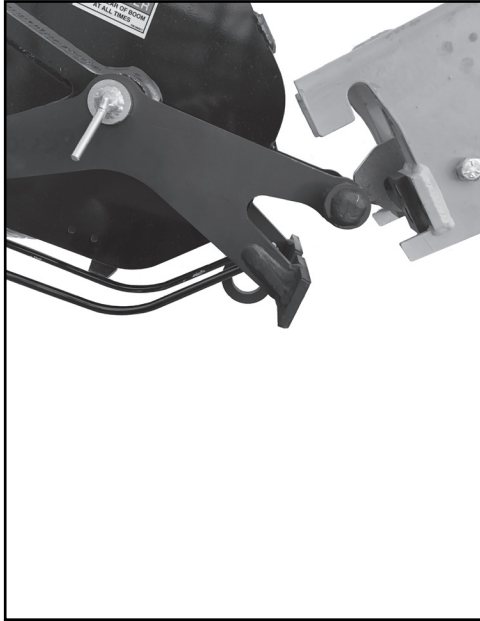


8. Retract and lower crane to bottom. Pull sheave pin and remove sheave.



5 Personnel Basket Deployment

11. Align fixed pin on adapter with slots on stalk. Fully engage adapter with stalk.



16. Personnel basket setup complete. Place transmitter into transmitter storage when not in use.



NOTICE

Personnel Basket stowage will follow deployment instructions in reverse.

Maintenance and Inspection 6

6.1 General

All equipment used in the lifting of personnel shall be inspected, tested, and maintained to protect against failure during lifting operations. All inspections shall be performed by a qualified operator. Any deficiencies identified shall be examined and a determination made as to whether they constitute a hazard.

6.2 Frequency

1. Initial Inspection:
 - A. Prior to initial use and at each new job site, all platforms shall be inspected to verify compliance with applicable provisions.
2. Regular Inspection:
 - A. Frequent
 1. The personnel basket, suspension system, attachment points, and any personnel basket motion controls shall be inspected at least once each day before use. The inspection is to identify conditions as potentially creating a hazardous operating condition. Any conditions found that constitute a hazard shall be corrected prior to lifting personnel.
 - B. Periodic
 1. At least once every 12 months, a periodic inspection of the personnel basket shall be performed. A personnel basket that has been out of service for 12 or more consecutive months shall receive a periodic inspection prior to use.
 - C. Records
 1. For frequent inspections, dated records for the personnel basket shall be made and kept by the personnel basket operator for the duration of the personnel lift operation.
 2. For periodic inspections, dated records for the personnel basket shall be kept by the personnel basket operator. The last periodic inspection shall be kept with the personnel basket and available for review.

NOTICE

Reference Appendix II at back of manual for pre-lift inspection check list.

6.3 Test Procedure

1. At each new job site, prior to hoisting people in the personnel platform, the platform and rigging shall be proof tested to 125% of the platform's rating. With the proof test load evenly distributed in the platform, the platform shall be hoisted and held in a suspended position for not less than 5 minutes.
2. Any damage revealed by the inspection shall be corrected and another proof test conducted.
3. After any approved structural repair or modification, a platform shall be proof tested to 150% of the platform's rating. Failure to obtain approved repair or modification may result in injury or death and will result in voiding warranty.

6 Maintenance and Inspection

6.4 Records

The record of the most recent proof testing shall be maintained at the job site.

The platform owner shall maintain records of any repairs to, or replacements of, the structural components of the platform.

6.5 Adjustments and Repairs

1. Any hazardous condition disclosed by any inspection shall be corrected before use of the platform is resumed. Adjustments and repairs shall be accomplished by designated personnel.
2. Adjustments shall provide for correct functioning of components.
3. Replacement parts used or repairs made shall be equal to or exceed the original equipment specification.
4. Any adjustment to braking system shall be done by a qualified operator.

6.6 Modifications

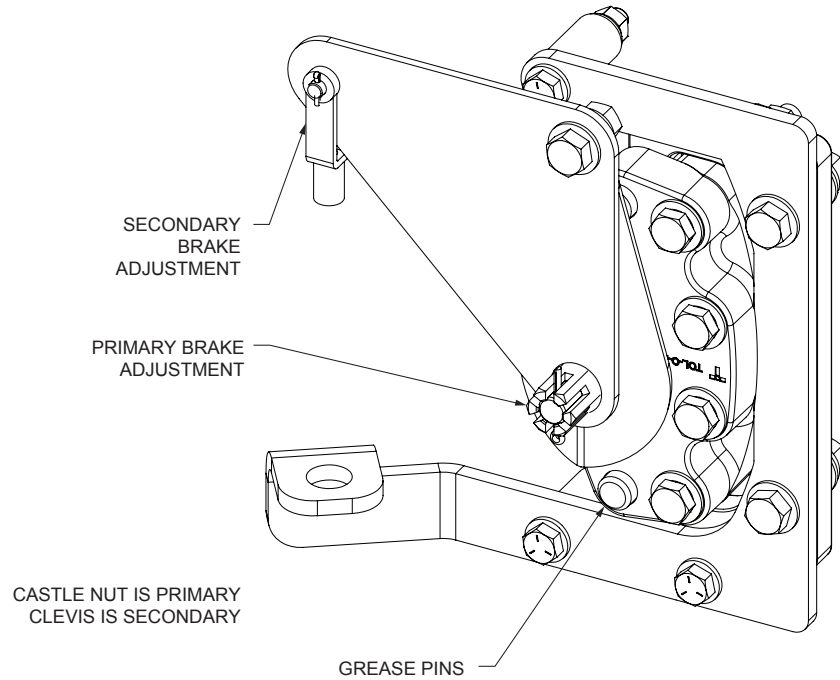
Only modifications approved in writing by the manufacturer shall be accomplished.

6.7 Brake Test/Adjustment

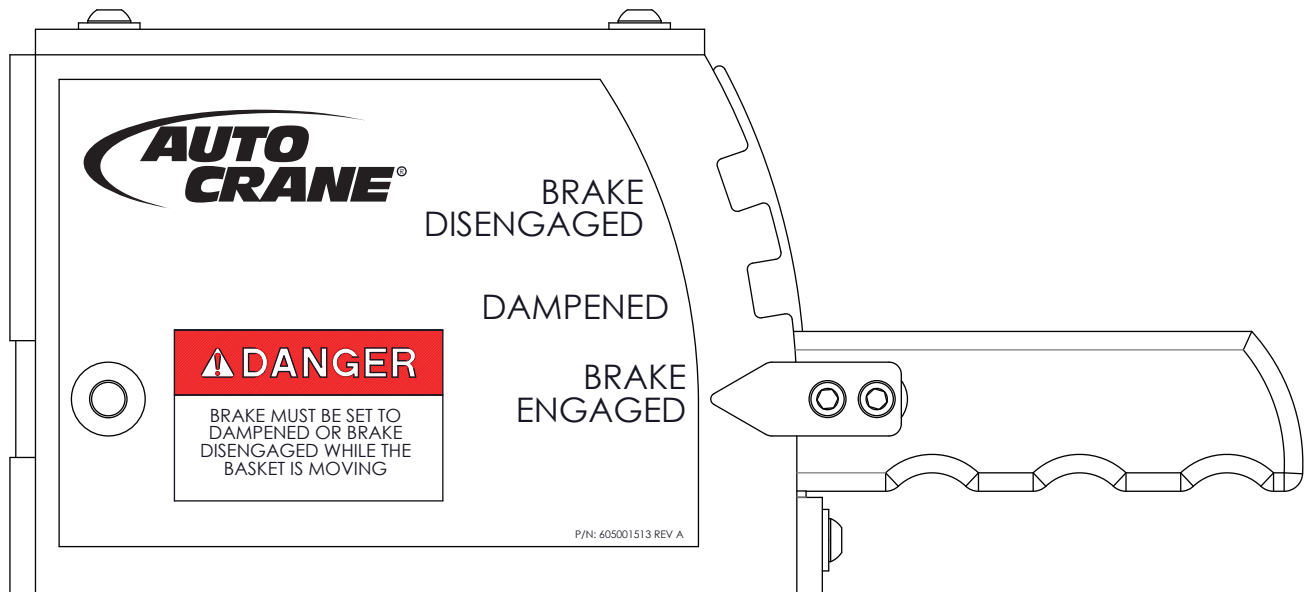
1. If brake will not hold load:
 - A. Adjust castle nut first by removing the cotter pin first, and then turning the castle nut clockwise one flat.
 - B. Reinstall cotter pin and retest brake operation by placing test weight in basket, pushing basket off of level, and setting brake to ON position.
2. If brake holds load:
 - A. Carefully bring basket back to level.
3. If brake does not hold load:
 - A. The castle nut adjustment can be performed again, and/or the clevis can be unpinned from the lever and turned clockwise to increase brake force.
4. After load holding has been established:
 - A. Place brake in dampened position.
 - B. Lift and lower basket to determine dampening level.
5. If dampening level requires adjustment:
 - A. The clevis can be unpinned and turned to increase/decrease brake force.
 - B. Repeat until dampening level is acceptable to operator.
6. Periodic greasing of caliper pins and pad pins is recommended to keep brake caliper operating normally. Do not allow grease to come into contact with brake pads or brake bar.

Maintenance and Inspection 6

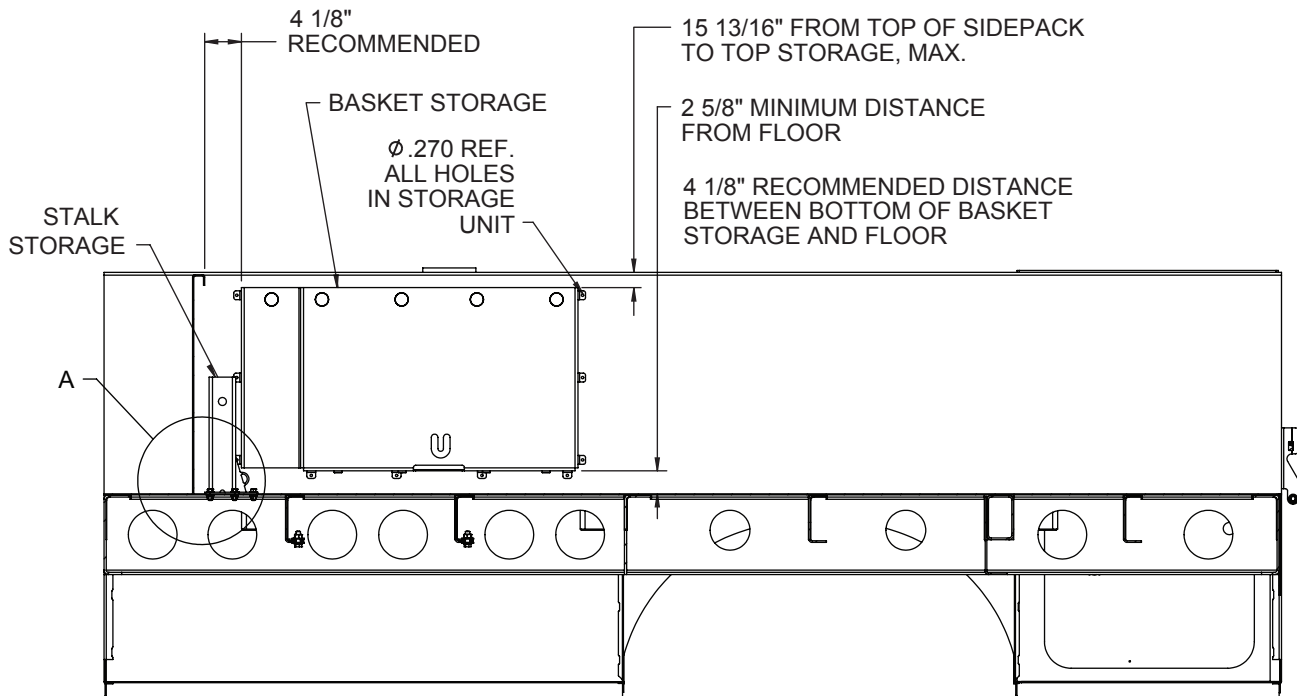
Brake Adjustment



Brake Function Diagram



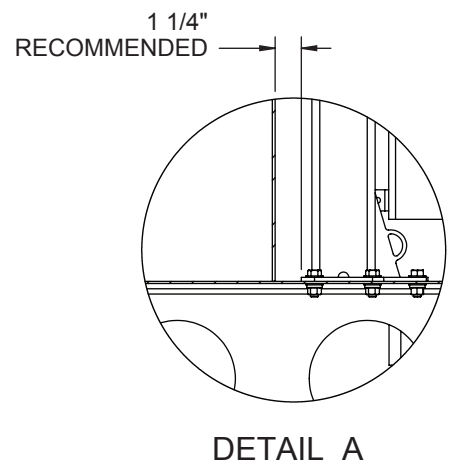
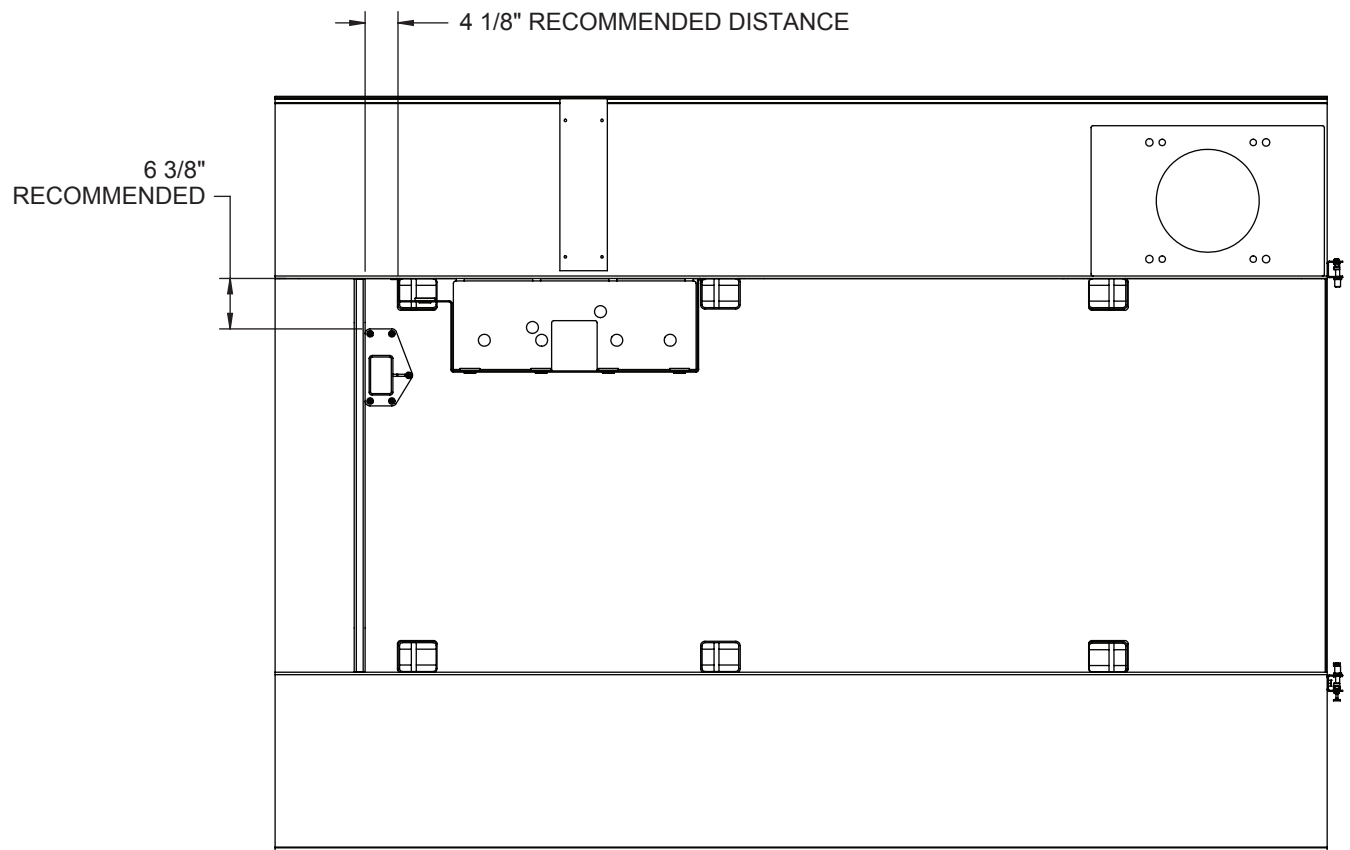
7 Personnel Basket Storage Installation



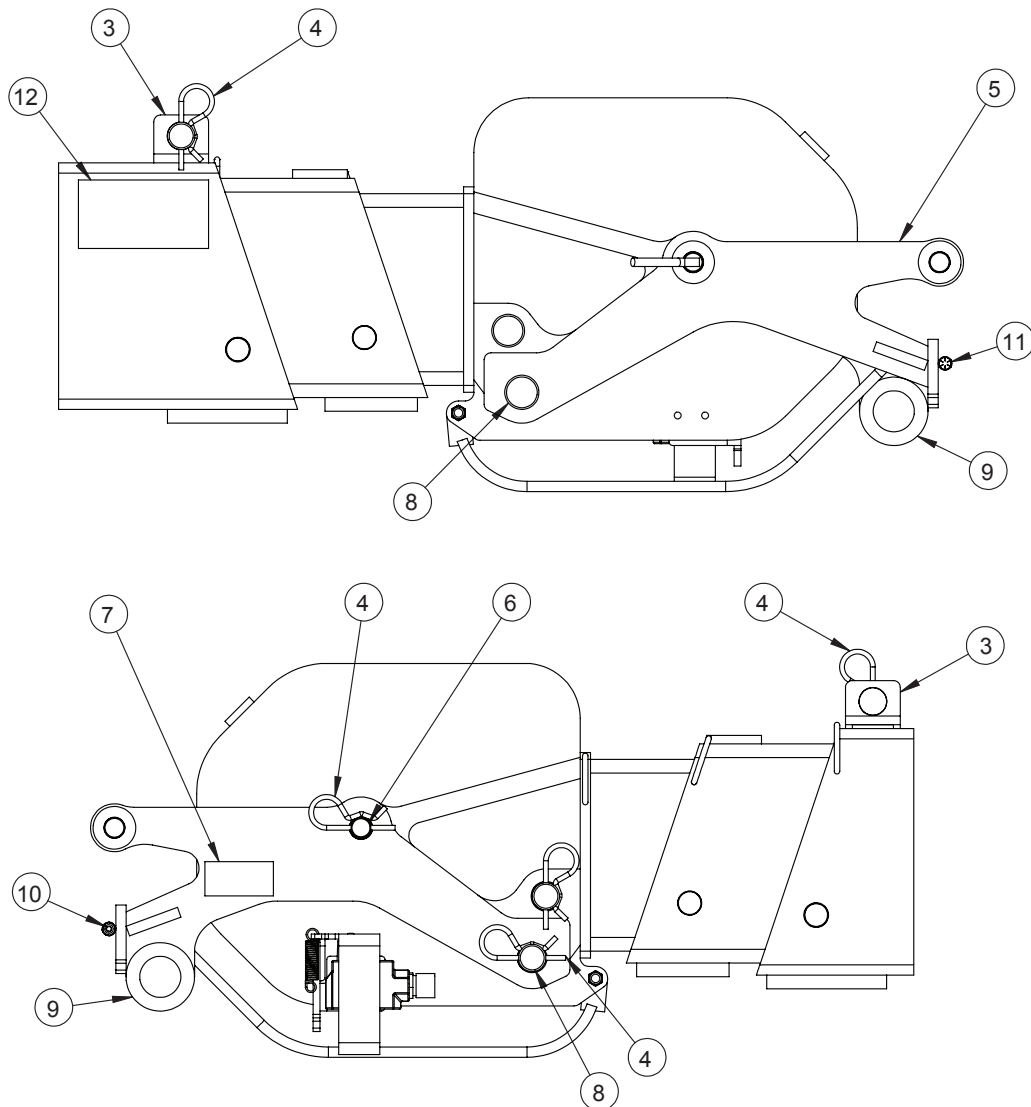
1. Basket storage to be placed on sidepack, minimum of 2-5/8" between bottom of unit and floor.
2. Once desired location is found, temporarily hold basket storage to sidepack and determine if any attachment point holes will interfere with structural members and adjust accordingly.
3. Using basket storage as template, transfer hole pattern to sidepack and drill 0.270" Holes to accept the hardware provided.
4. After holes have been drilled, seal around holes and attach basket storage with supplied hardware.

The stalk storage should be placed on the floor of the body, and used as a pattern to transfer its mounting hole pattern. It should be determined prior to drilling if any of the holes will interfere with existing equipment underneath the floor. Once this determination has been made, drill 0.400" holes into the floor. Seal around holes in floor and mount stalk storage with provided hardware.

Personnel Basket Storage Installation 7

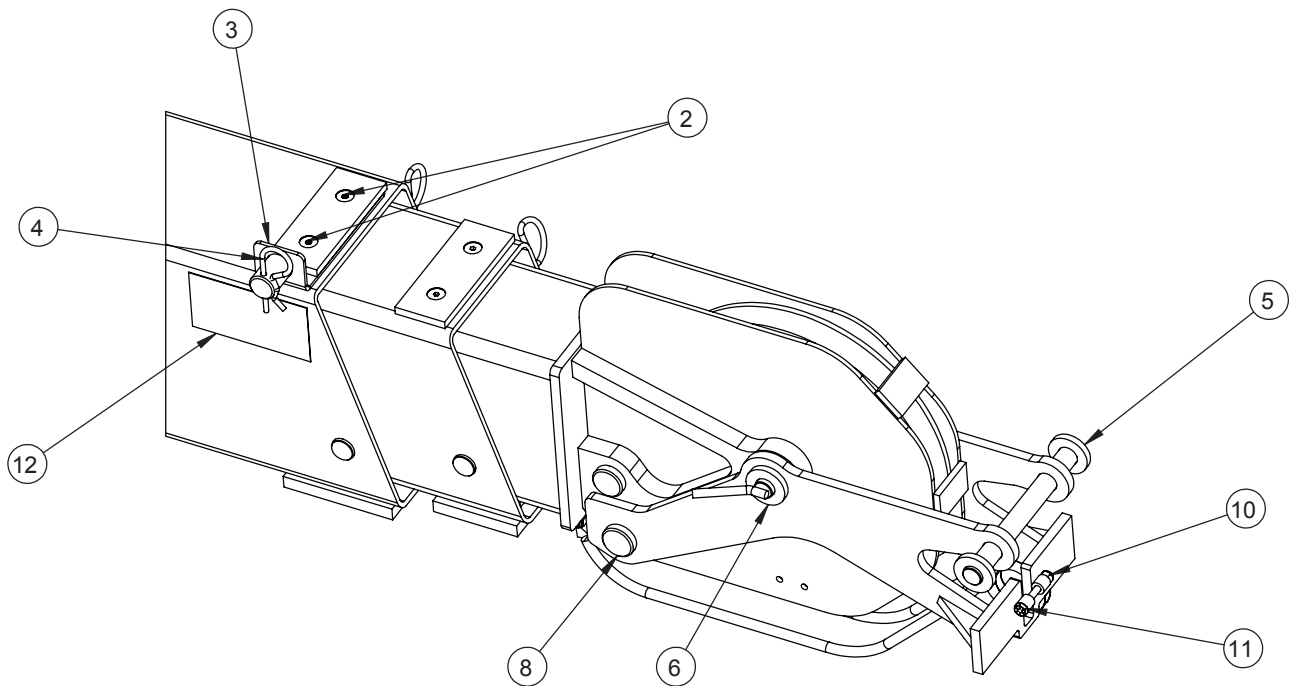


8 Adapter Kit Installation



ITEM NO.	QTY	PART NO.	DESCRIPTION
1	1	460081000	WEAR PAD, CABLE
2	2	479200304	SCREW SOC HD CTR SNK 5/16-24 UNF X 7/8
3	1	605001171	WELDMENT, CABLE STOW, 3/8 CABLE
4	3	360124	PIN HITCH
5	1	605001163	WELDMENT, ADAPTER, PERSONNEL BASKET, CROWN, HC-7 THRU HC-12S
6	1	605001174	WELDMENT, PIN, SHEAVE, QUICK RELEASE
7	1	605001505	DECAL, ANCHOR POINT
8	1	605001178	PIN, ROPE, HEADED, 1.00 DIA, 5.13 LG, W/ THRU HOLE
9	2	605001248	DECAL, ANCHOR, CONSPICUITY
10	1	016300	NUT HX NYLK 1/4-20 UNC
11	1	605001253	SCREW HX HD, 1/4-20 X 2, GR8
12	1	605001504	DECAL, LOAD LINE STOW

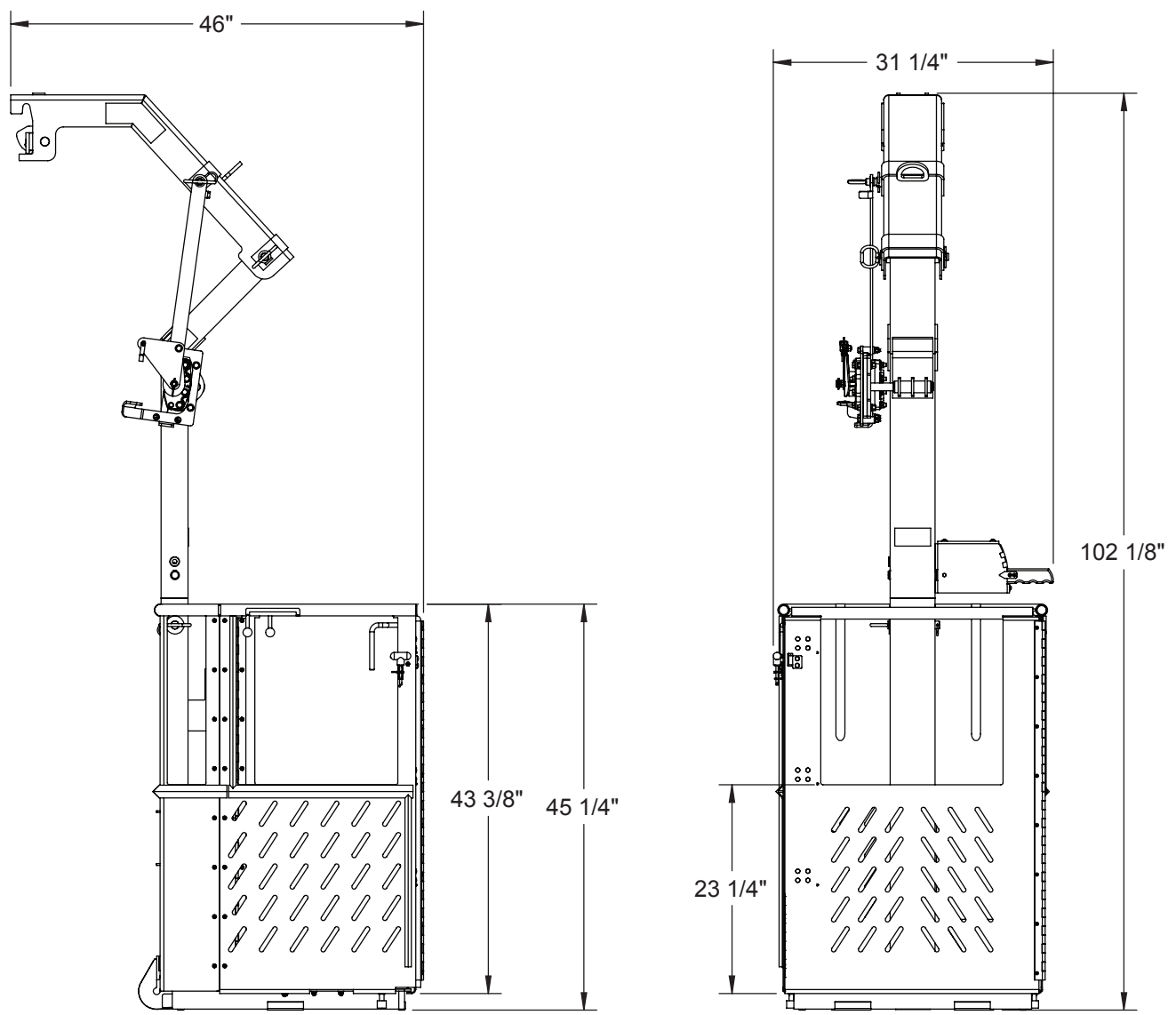
Adapter Kit Installation 8



1. To install crown adapter, remove existing sheave bolt and dead end rope pin while holding sheave temporarily in place.
2. Slide adapter (605001163) around crown, as per diagram, and install new pin (605001174) through sheave and secure with hitch pin (360124).
3. Replace rope into crown and install new dead end rope pin (605001178). Install anchor point decal (605001505) next to anchor point per diagram.
4. To install cable stow weldment (605001171), remove existing flat head screws from lower boom cable guard And discard screws. Place cable stow under cable guard and install with new flat had screws (479200304/479200307).
5. Once cable stow is in place, install decal as close as possible to cable stow.
6. Other kits attach similarly to the respective crane.

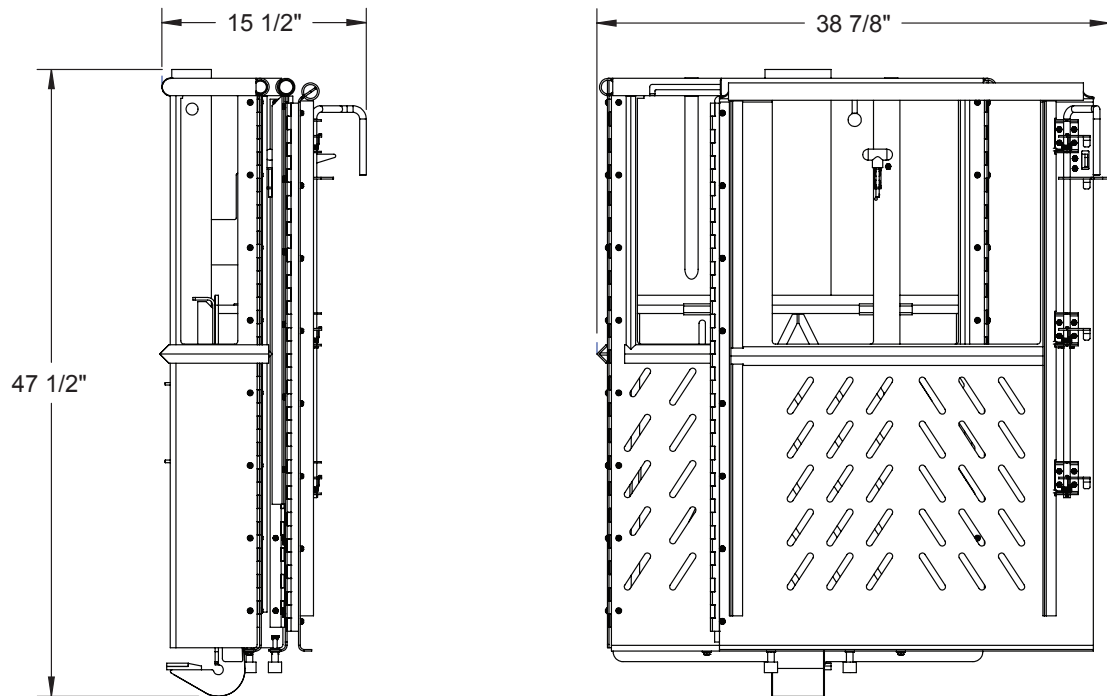
9 General Dimensions

Personnel Basket Assembly

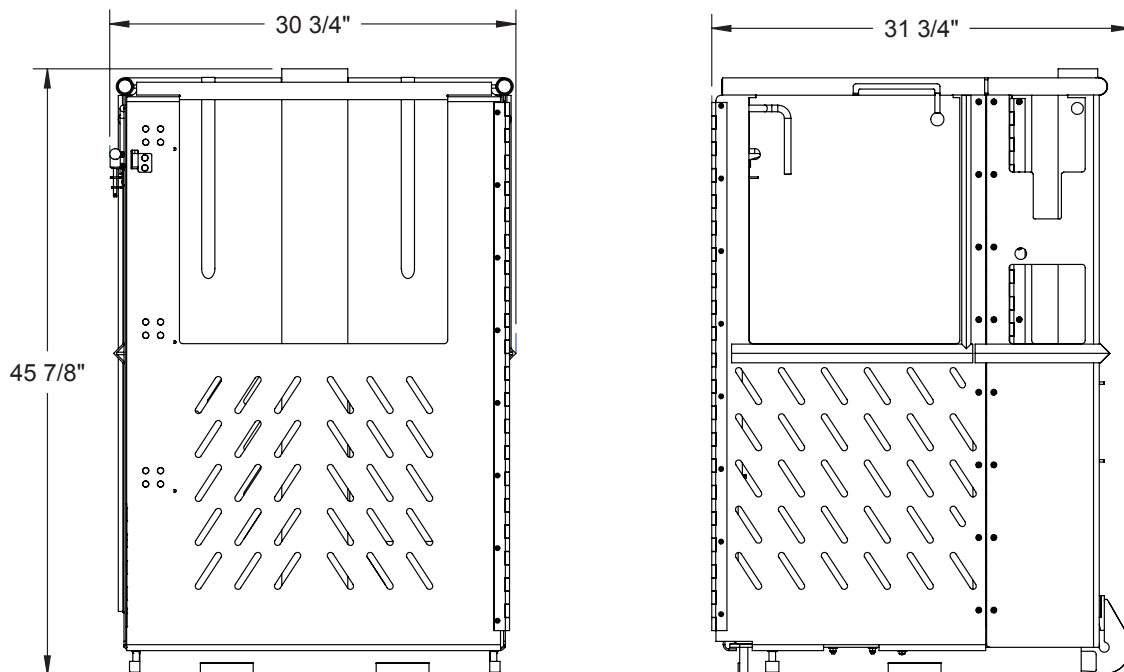


General Dimensions 9

Basket Assembly Folded

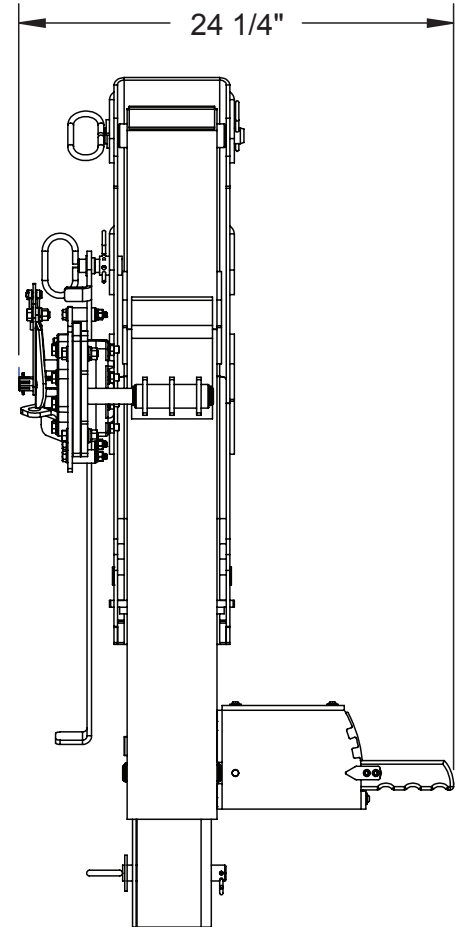
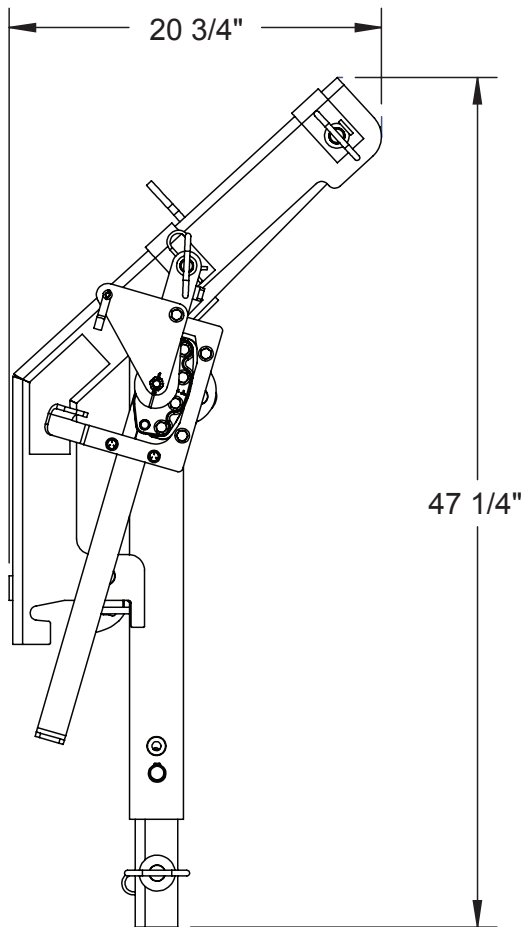


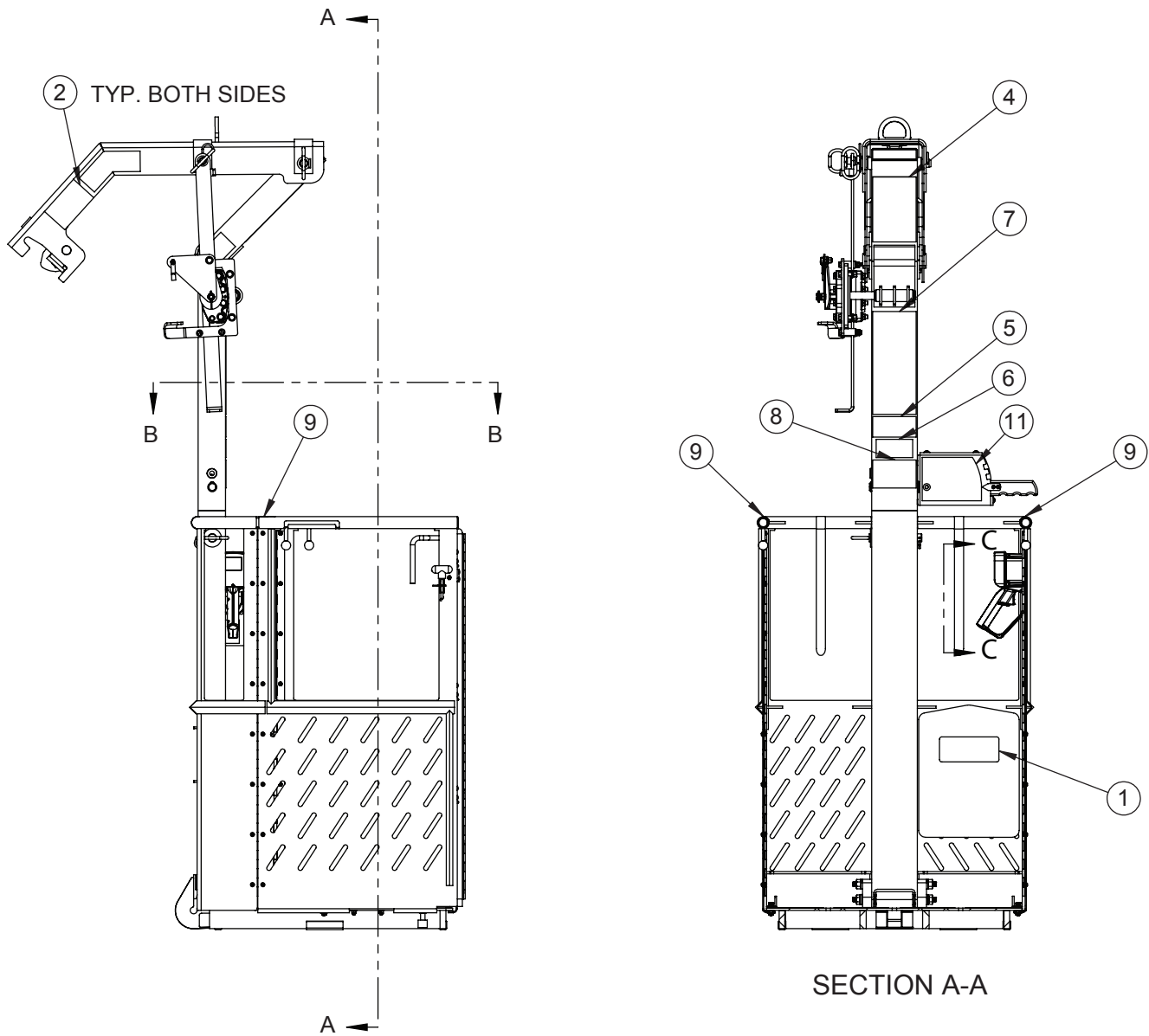
Basket Assembly Unfolded



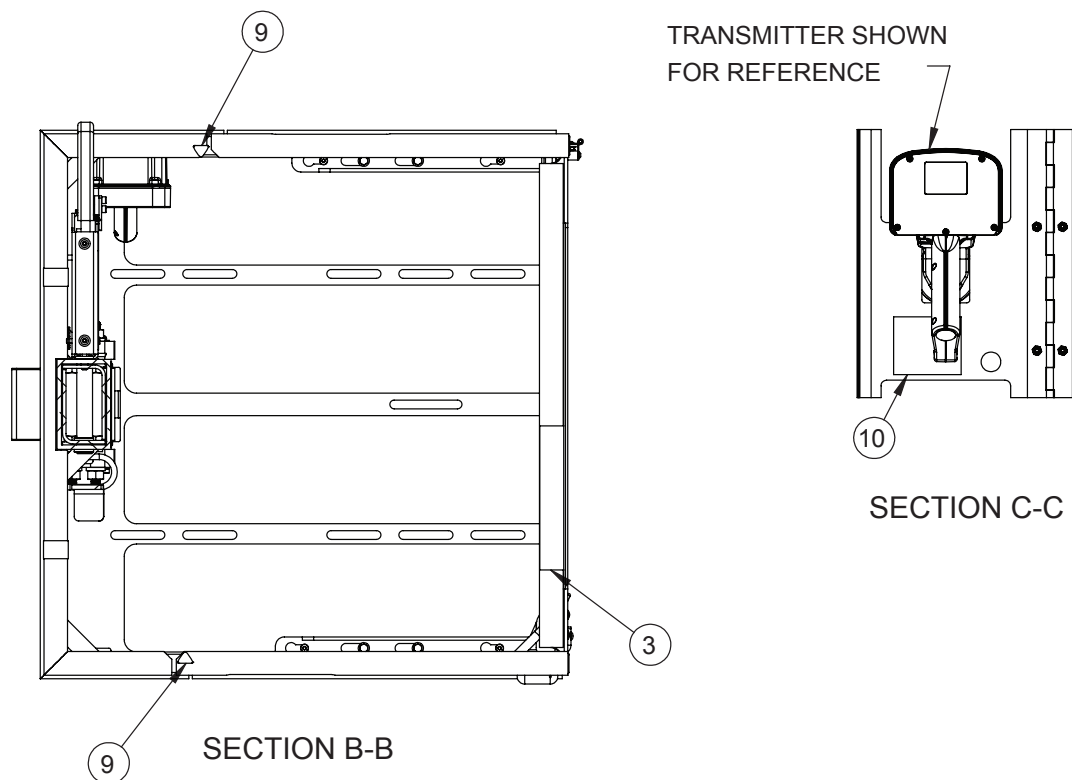
9 General Dimensions

Stalk Stowed



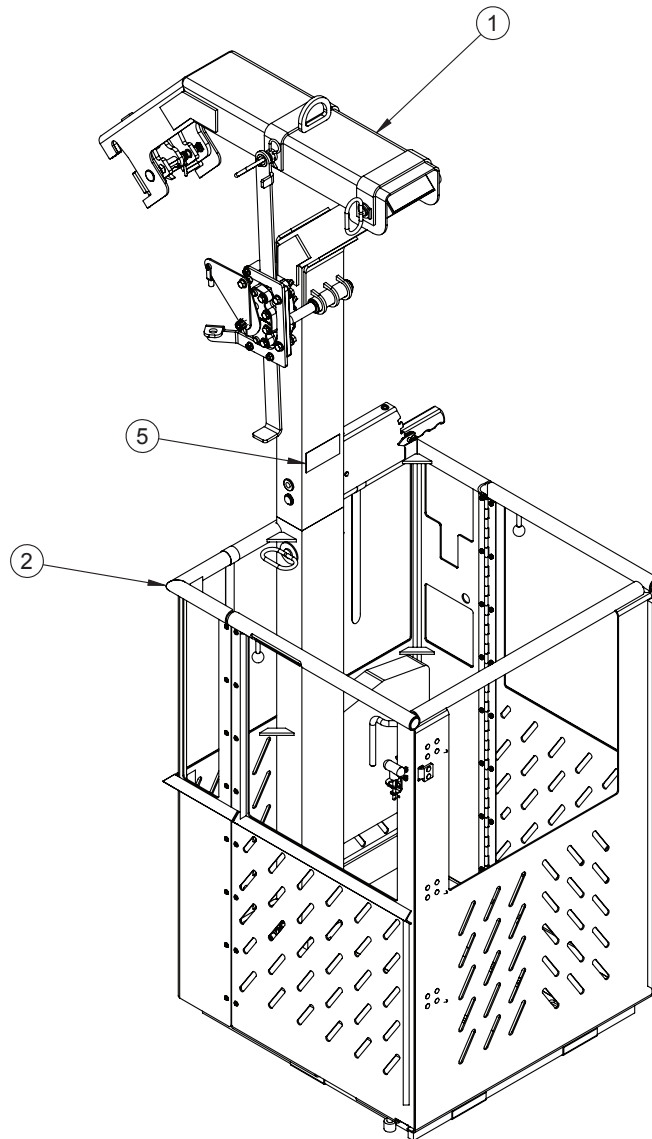


10 Decal Layout P/N: 605001500



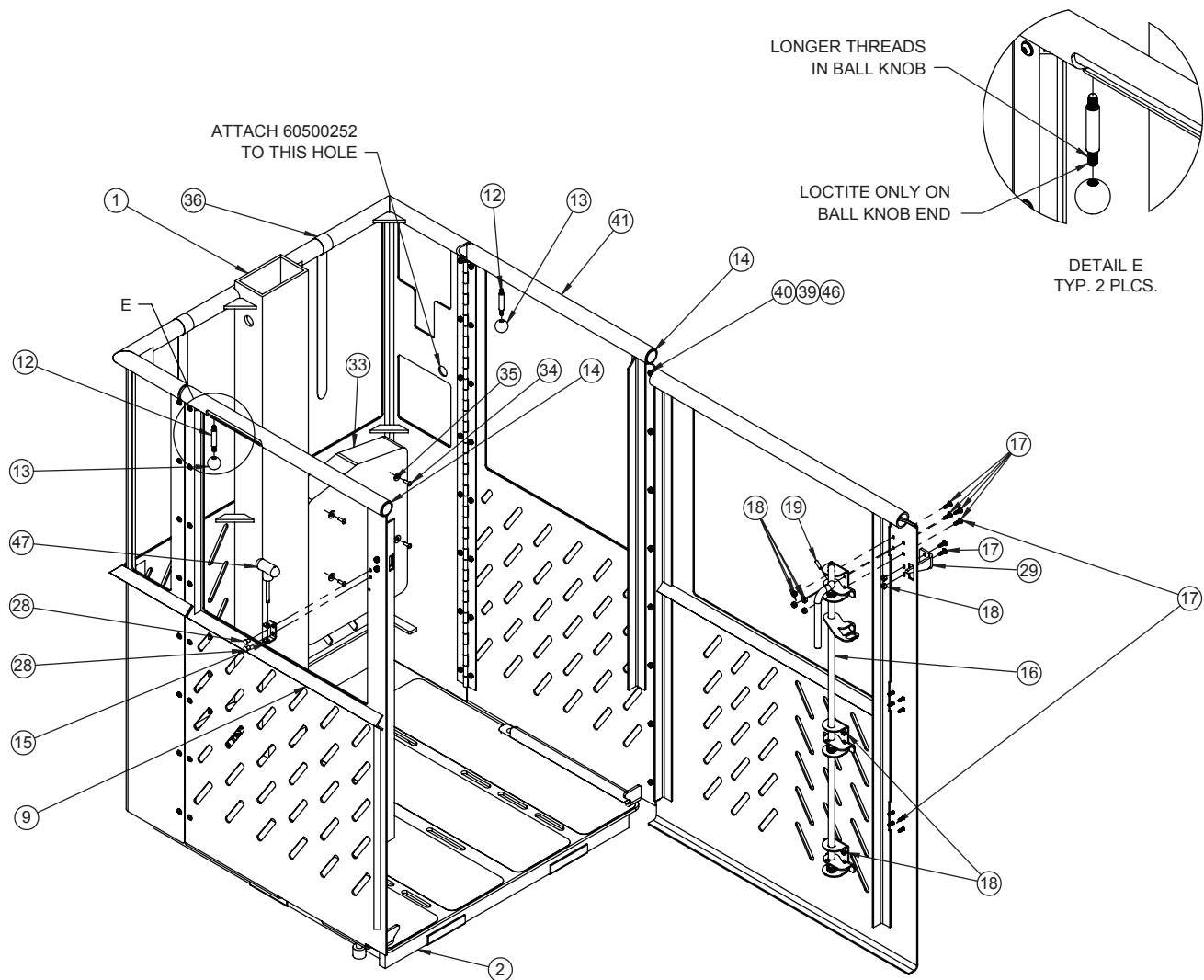
ITEM NO.	QTY	PART NUMBER	DESCRIPTION
1	1	605001501	DECAL, OWNER'S MANUAL
2	2	605001502	DECAL, LOCKING PIN
3	1	605001503	DECAL, HARNESS AND DOORS
4	1	605001506	DECAL, ELECTROCUTION HAZARD
5	1	605001507	DECAL, CAPACITY
6	1	605001508	DECAL, NAME PLATE
7	1	605001510	DECAL, GENERAL DANGER
8	1	605001511	DECAL, LOAD TEST
9	2	605001512	DECAL, PINCH POINT
10	1	605001513	DECAL, TRANSMITTER STORAGE
11	1	605001514	DECAL, BRAKE

General Assembly P/N: 605001000 11

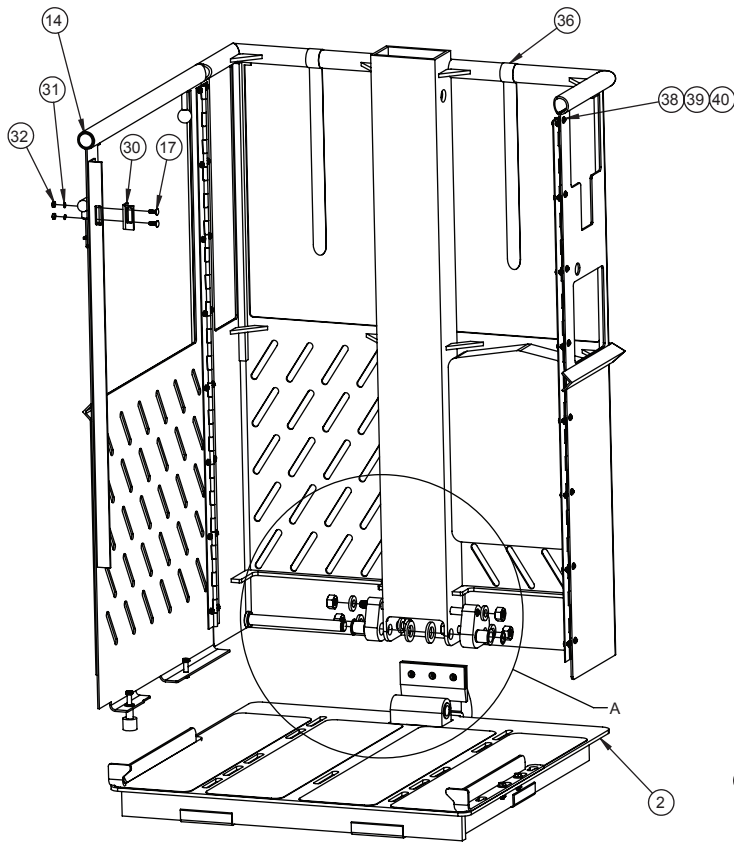


ITEM NO.	QTY	PART NUMBER	DESCRIPTION
1	1	605001007	STALK ASSEMBLY, FOLDING, STEEL/ALUM, 350 LBS. CAP.
2	1	605001009	PERSONNEL BASKET, FOLDING, ALUM, 350 LBS. CAP.
3	1	605001500	KIT, DECAL, PERSONNEL BASKET
4	1	605001515	MANUAL, PERSONNEL BASKET, FOLDING, ALUM, 350 LBS. CAP.
5	1	605001508	DECAL, NAME PLATE

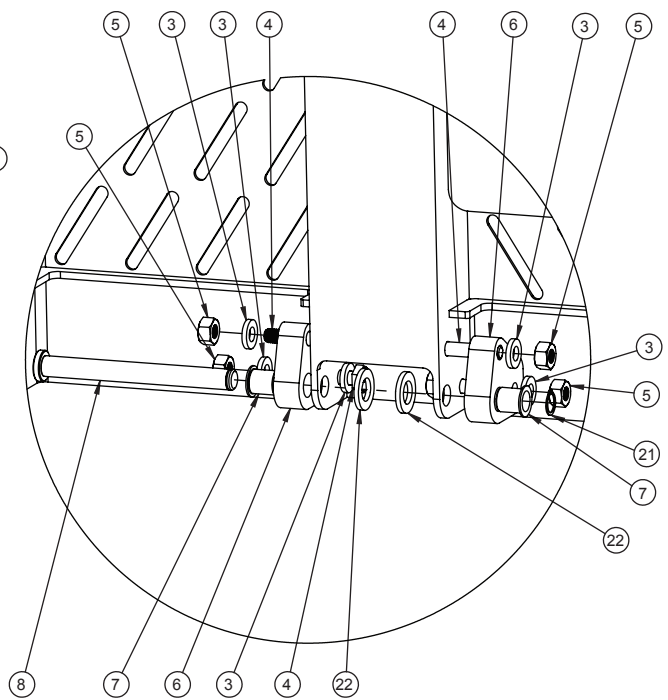
12 Folding Alum. Assembly P/N: 605001009



Folding Alum. Assembly P/N: 605001009 12

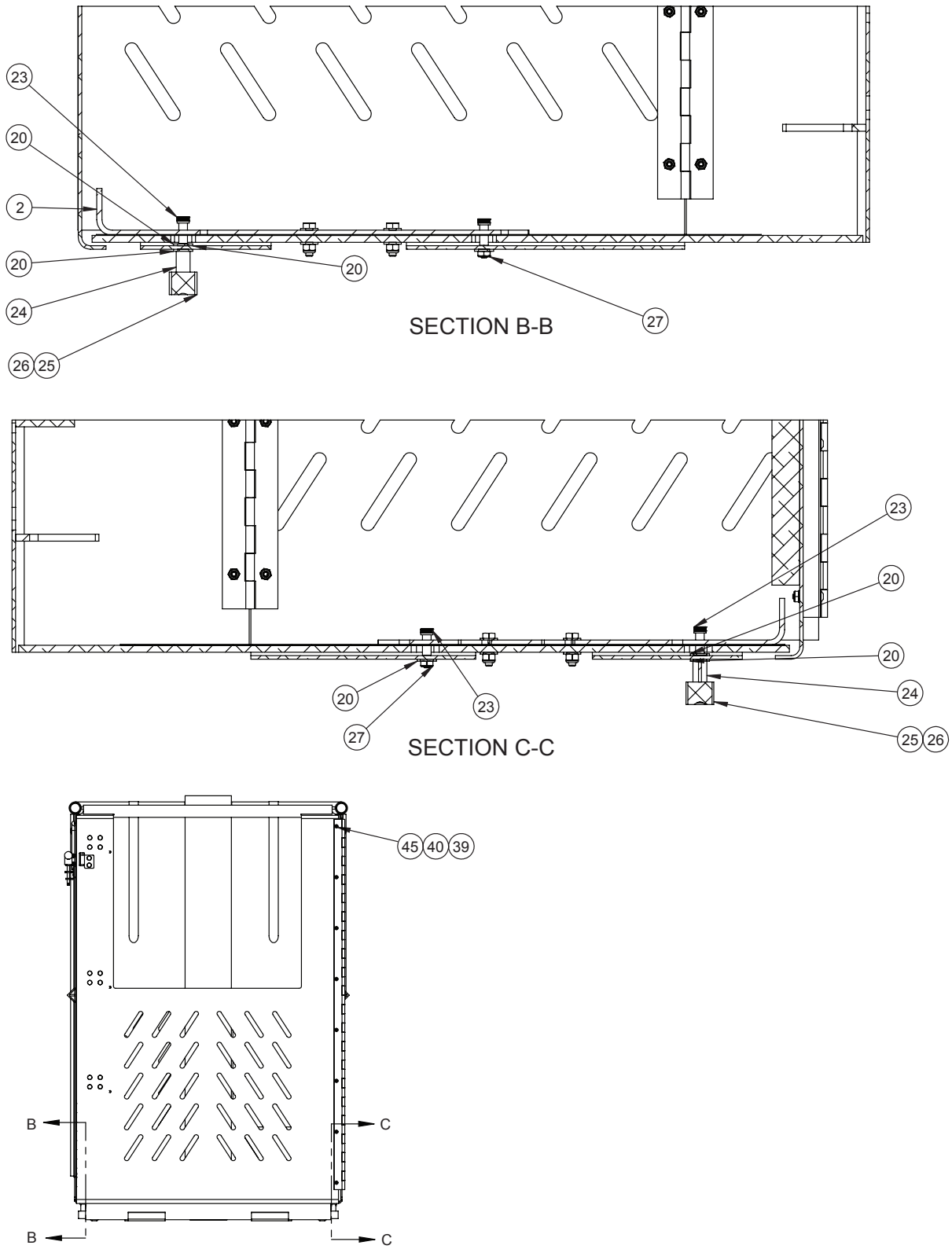


FLOOR HINGE DETAIL
SOME ITEMS REMOVED FOR CLARITY

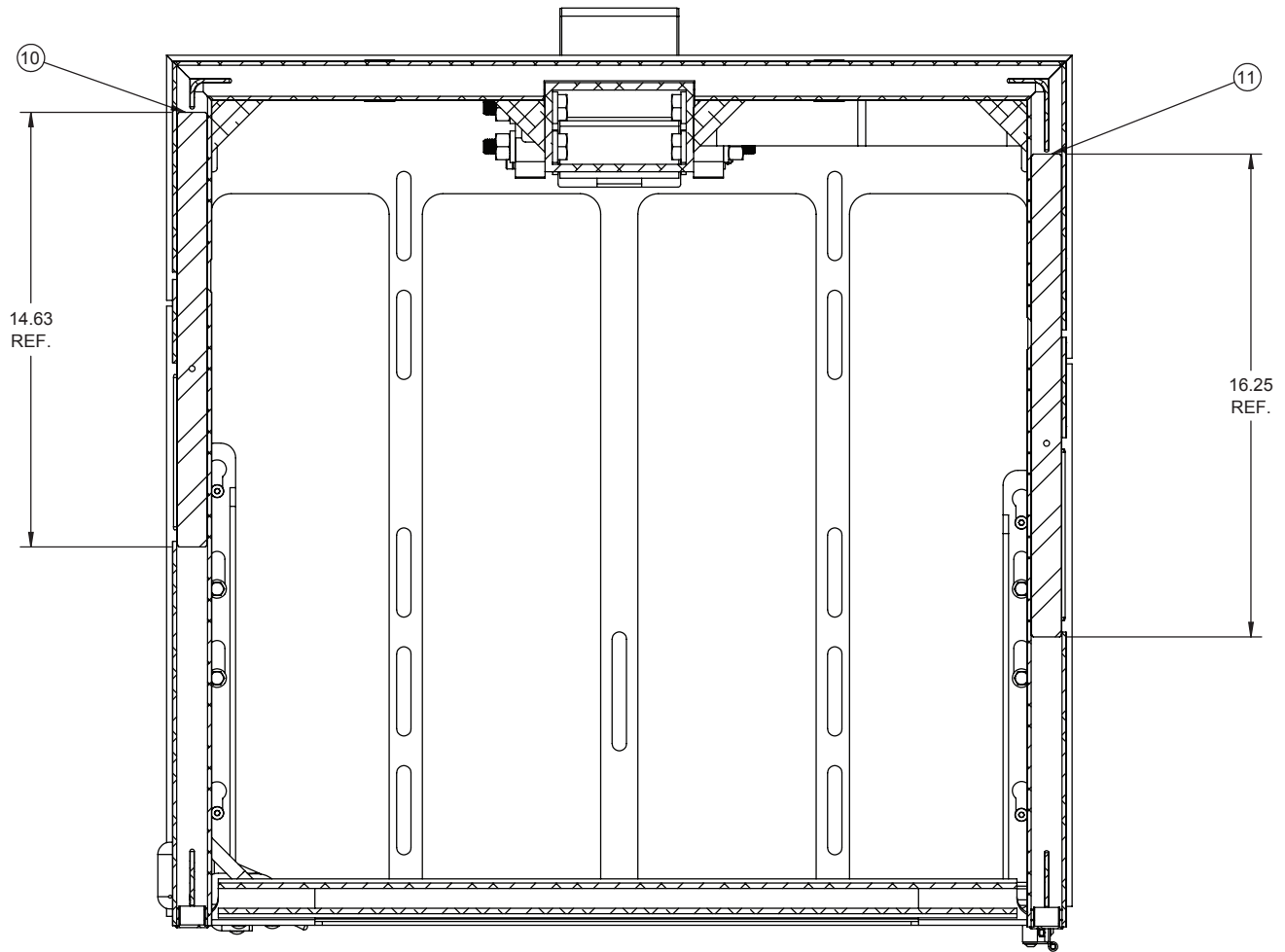


DETAIL A

12 Folding Alum. Assembly P/N: 605001009



Folding Alum. Assembly P/N: 605001009 12



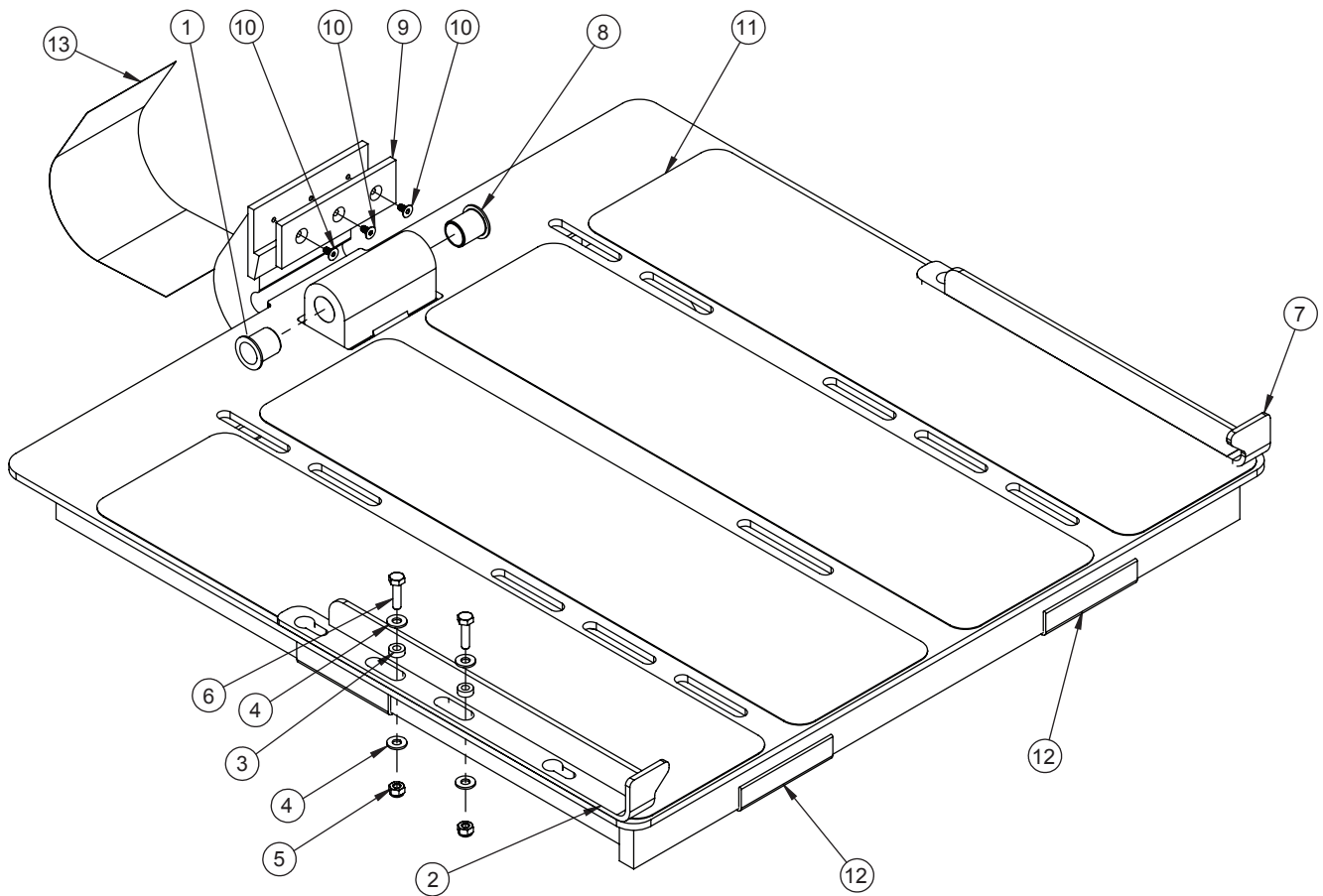
TOP VIEW - PIN DETAIL

ITEM NO.	QTY	PART NO.	DESCRIPTION
1	1	605001010	WELDMENT, FLOOR AND BACK, FOLDING, ALUM, 350 LBS. CAP.
2	1	605001008	FLOOR ASSEMBLY, FOLDING, ALUM, 350 LBS. CAP.
3	8	605001048	WASHER, FLAT, 1/2, F436, GALVANIZED
4	4	605001046	BOLT, 1/2-13, 2.50 LG, A325, GALVANIZED
5	4	605001047	NUT, 1/2-13, A563, GALVANIZED
6	2	605001043	HINGE BLOCK, ALUM
7	2	605001044	BEARING, 1.125 FLANGE, 1.00 LG, PLASTIC, FOR 0.75 OD SHAFT
8	1	605001049	PIN, HEADED, 0.749 OD, 7.625 LG, ZINC PLATED
9	1	605001026	WELDMENT, LEFT SIDE, FOLDING, ALUM
10	1	605001038	PIN, 1.019 OD, 12.38 LG, MOLY-FILLED NYLON
11	1	605001039	PIN, 1.019 OD, 13.56 LG, MOLY-FILLED NYLON
12	2	605001040	SHAFT, LEVER, 1/4-20 THREADED ENDS, 0.375 DIA, 2.375 OAL, SS
13	2	605001041	KNOB, BALL, PP, BLACK, 1/4-20 THREADED INSERT, 1.00 OD

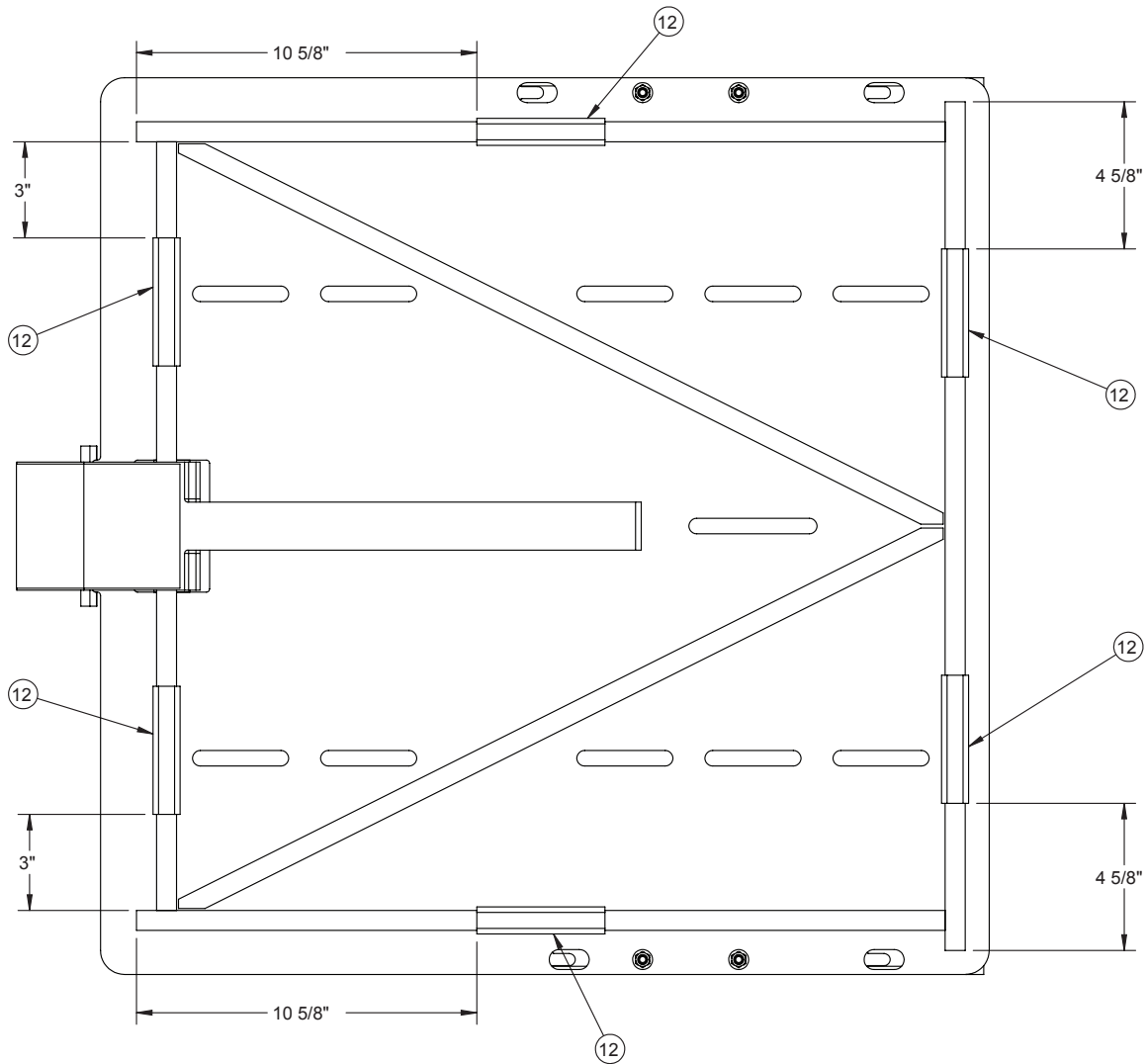
12 Folding Alum. Assembly P/N: 605001009

ITEM NO.	QTY	PART NO.	DESCRIPTION
14	2	605001042	PLUG, ROUND, SNAP-IN, PLASTIC, BLACK, FOR 0.96-1.07 ID
15	1	605001034	BRACKET, PIN, SS
16	1	605001051	LATCH ASSEMBLY, SS
17	16	605001036	BOLT, CARRIAGE, SQ NECK, 10-24, 0.625 LG, SS
18	14	605001060	NUT, NYLON LOCK, 10-24, SS
19	3	605001058	CAP, PUSH-ON, EPDM, BLACK, 1.0625 OAL, FOR 5/64 DIA
20	6	605001064	WASHER, FLAT, 0.69 OD, 0.26 ID, 0.07 THICK, NYLON
21	1	605001050	RETAINING RING, EXTERNAL, FOR 0.75 OD, ZINC PLATED
22	2	605001045	SPACER, UNTHREADED, 1.50 OD, 0.78 ID, 0.175 THICK, NYLON
23	4	605001063	SCREW, 0.75 LG SHOULDER, 0.313 DIA, 1/4-20, 1.41 OAL, SS
24	2	605001065	STANDOFF, ROUND, 0.50 OD, 0.75 LG, 1/4-20 FEMALE THREAD, ALUM
25	2	605001066	FOOT, 1.00 OD, 0.81 LG, W/ CS HOLE, NYLON, BLACK
26	2	605001151	SCREW, FLAT HEAD, 1/4-20, 1.125 LG, ZINC PLATED
27	2	605001069	NUT, THIN, NYLON LOCK, 1/4-20, SS
28	2	750783000	RIVET HINGE SS
29	1	605001059	RAMP, LATCH, SS
30	1	605001035	BRACKET, LATCH RAMP
31	2	605001037	WASHER, LOCK, SPLIT, #10, SS
32	2	750074000	NUT #10 NC STAINLESS
33	1	605001095	HOLDER, DOCUMENT, PLASTIC
34	4	754028000	RIVET POP 3/16 DIA X 1/4 - 3/8 GRIP SS
35	4	020400000	WASHER FL SAE 1/4
36	1	605001181	STRAP, HOOK AND LOOP, 18 IN X 1 IN, MARINE GRADE
37	2	605001195	HINGE, CONTINUOUS, SIDE, 2 X 40, SS
38	32	605001235	SCREW, BUTTON HEAD, 10-24, 7/16 LG, SS
39	48	605001197	WASHER, #10, SS
40	48	605001241	NUT, THIN, NYLON LOCK, 10-24, SS
41	1	605001189	WELDMENT, RIGHT SIDE, FOLDING, ALUM
42	1	605001196	HINGE, CONTINUOUS, CORNER, 2 X 40, SS
43	1	605001232	SPACER, HINGE, ALUM
44	1	605001190	WELDMENT, FRONT, FOLDING, ALUM
45	8	605001236	SCREW, BUTTON HEAD, 10-24, 1 LG, SS
46	8	605001199	SCREW, BUTTON HEAD, 10-24, 3/8 LG, SS
47	1	605001249	DETENT PIN, 1/4 DIA, 2 IN GRIP LENGTH, TEE HANDLE, W/ LANYARD
48	1	605001250	LANYARD, TRANSMITTER
49	1	605001252	CARABINER

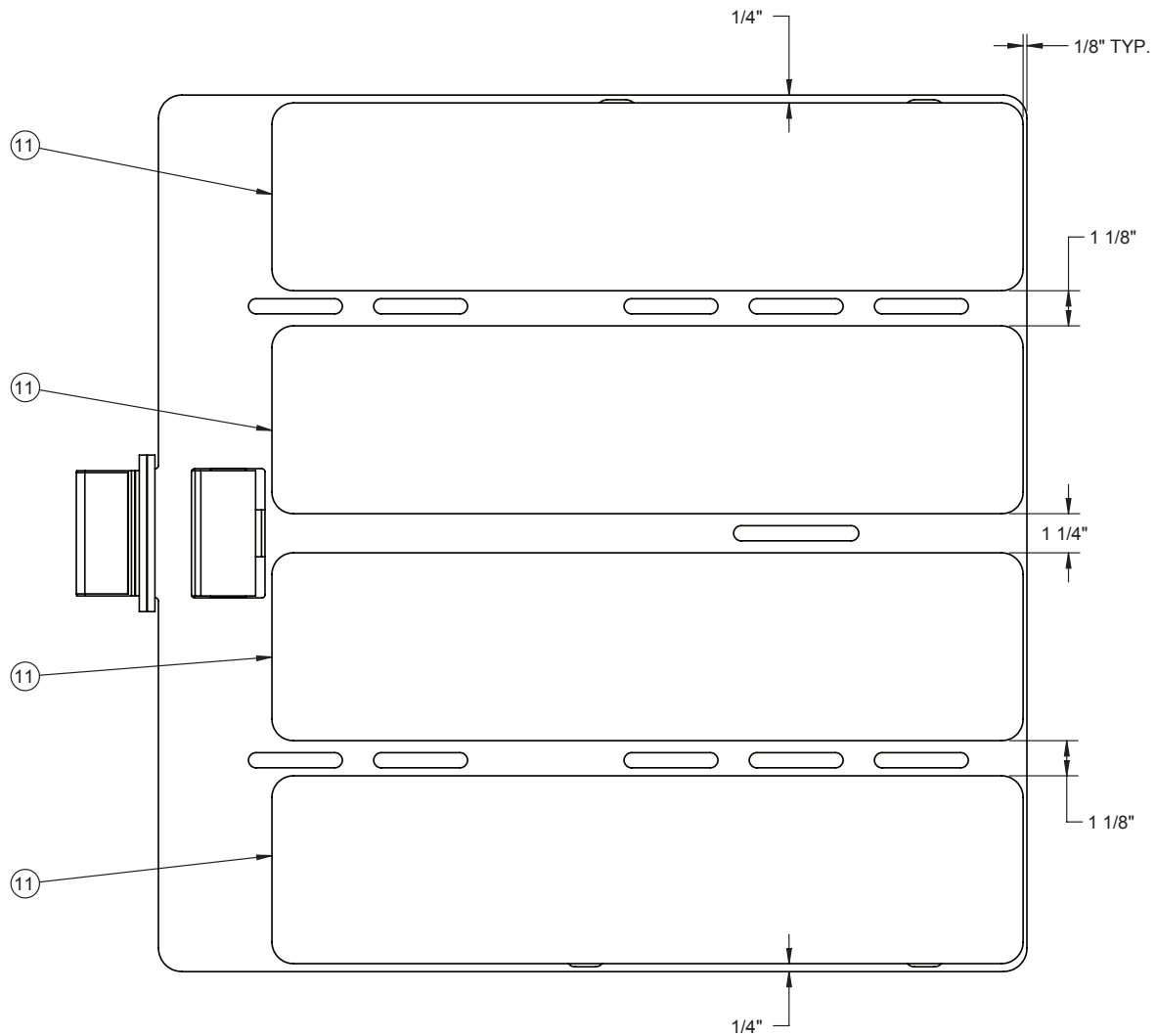
Floor Assembly P/N: 605001008 13



13 Floor Assembly P/N: 605001008

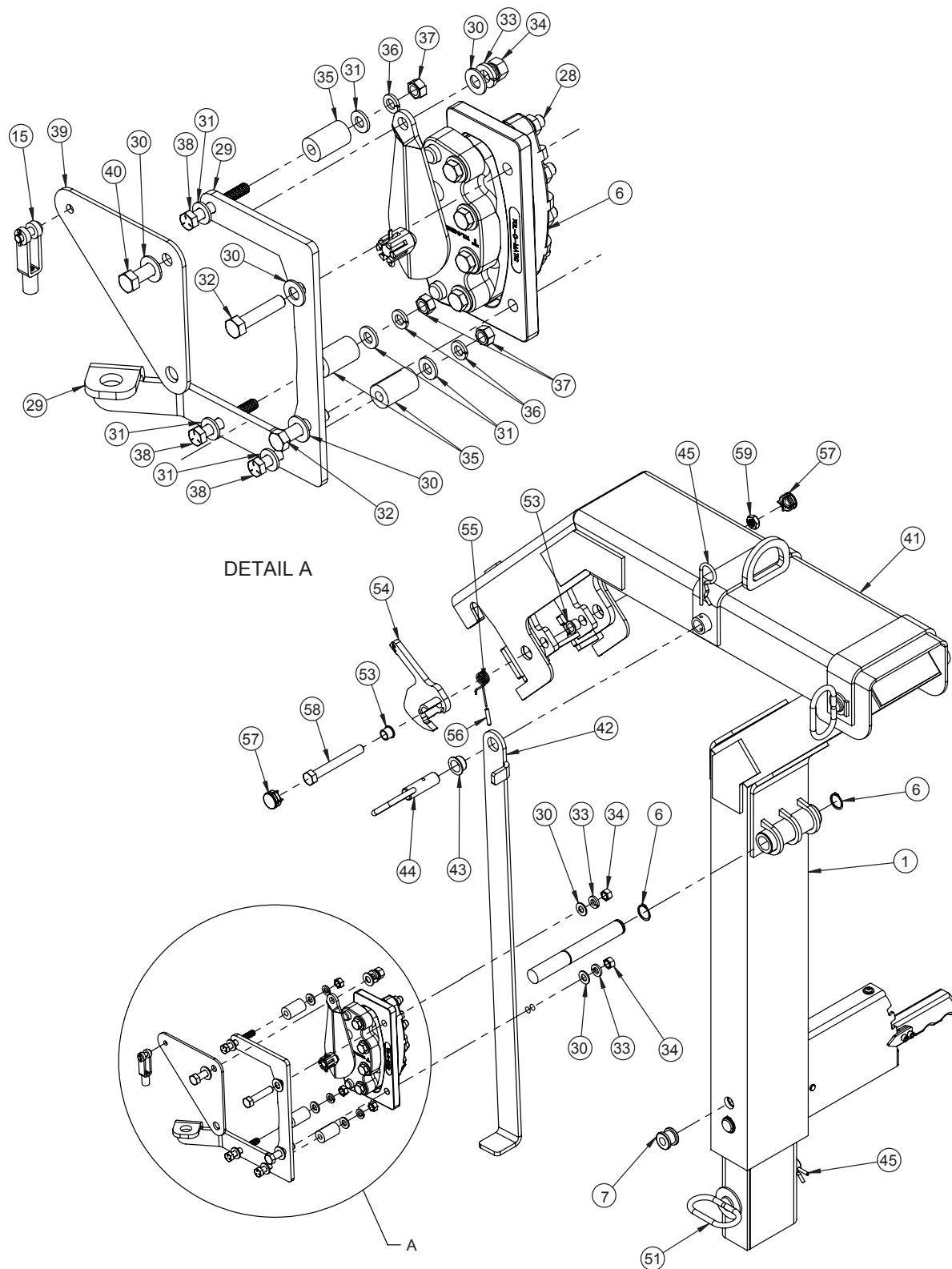


Floor Assembly P/N: 605001008 13

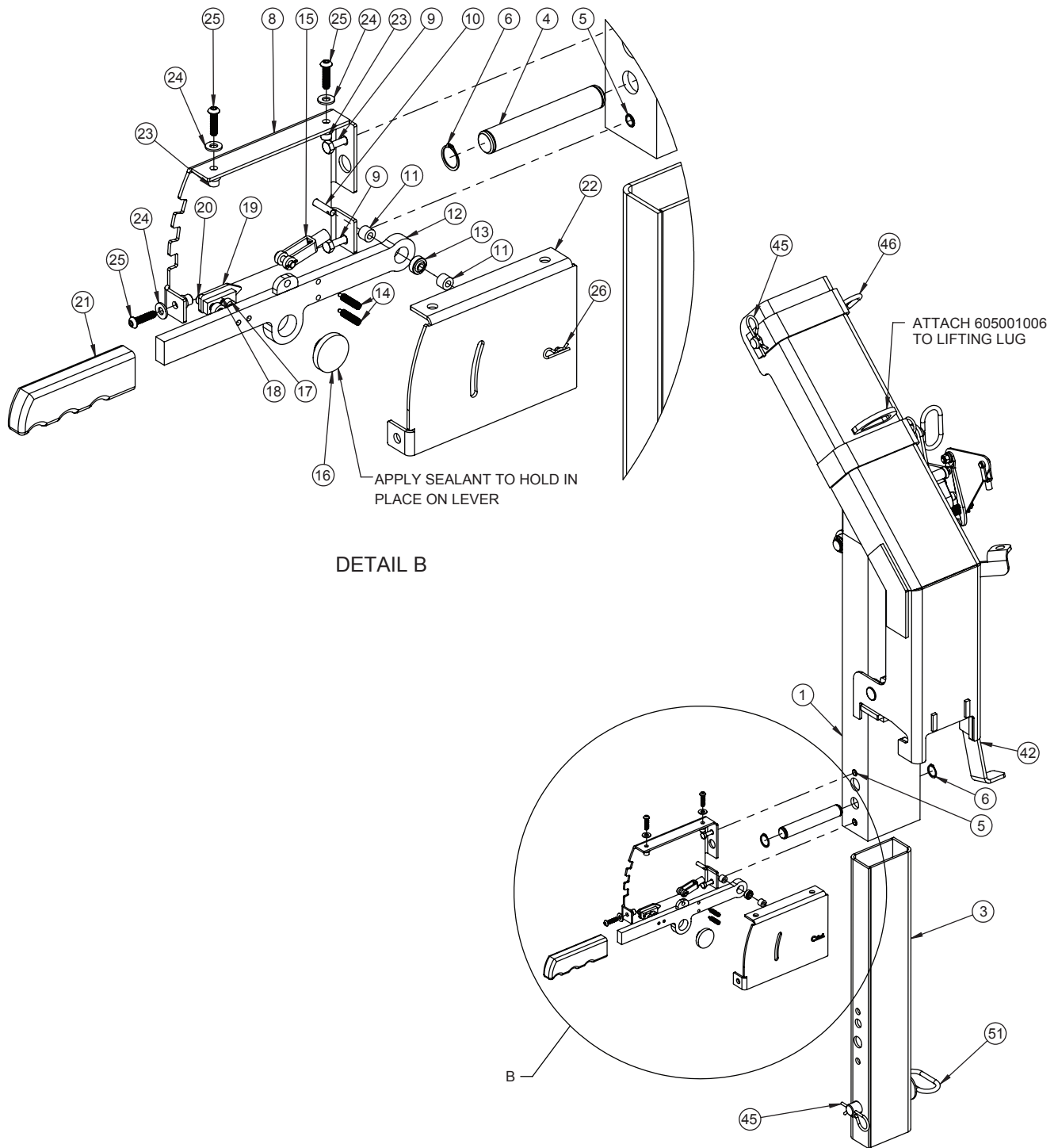


ITEM NO.	QTY	PART NUMBER	DESCRIPTION
1	1	605001083	WELDMENT, FLOOR ASSEMBLY, FOLDING, ALUM, 350 LBS. CAP.
2	1	605001067	WELDMENT, LOCKING BAR, LEFT, SS
3	4	605001068	SPACER, UNTHREADED, 0.50 OD, .188 LG, FOR 0.25 SCREW, NYLON
4	8	020400000	WASHER FL SAE 1/4
5	4	016300000	NUT HX NYLK 1/4-20 UNC
6	4	005604000	SCREW HX HD 1/4-20 UNC X 1 LG
7	1	605001185	WELDMENT, LOCKING BAR, RIGHT, SS
8	2	605001044	BEARING, 1.125 FLANGE, 1.00 LG, PLASTIC, FOR 0.75 OD SHAFT
9	1	605001091	WEAR PAD, CAM
10	3	605001092	SCREW, FLAT HEAD, 10-24, 3/8 LG, SS
11	4	766141000	DECAL, SAFETY SURFACE
12	24"	605001093	EDGE TRIM, 0.625 GRIP
13	1	605001094	ROCK GUARD, 3.875 X 10.00

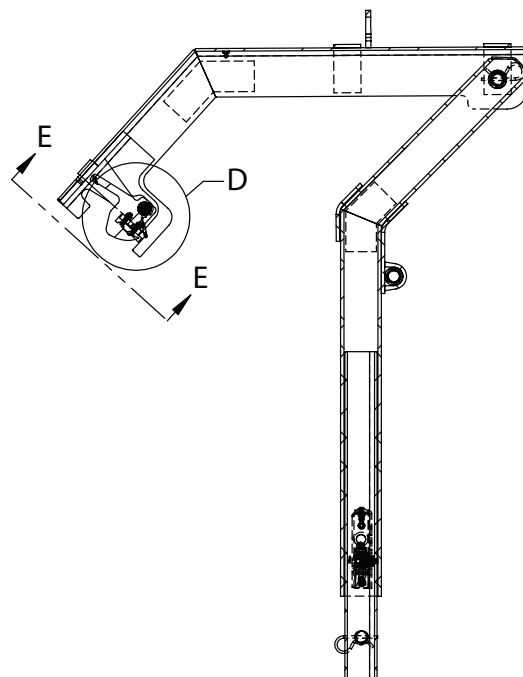
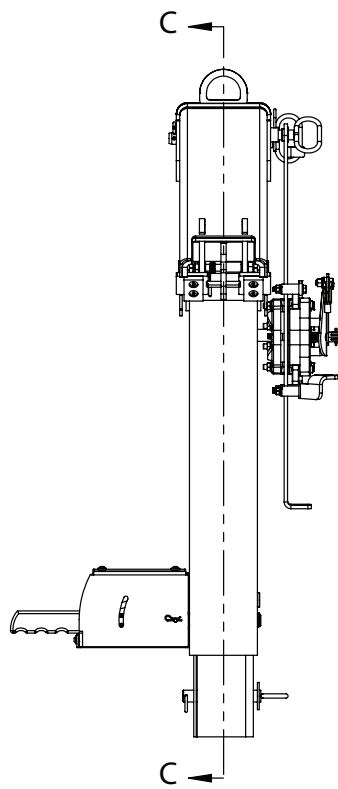
14 Stalk Assembly P/N: 605001007



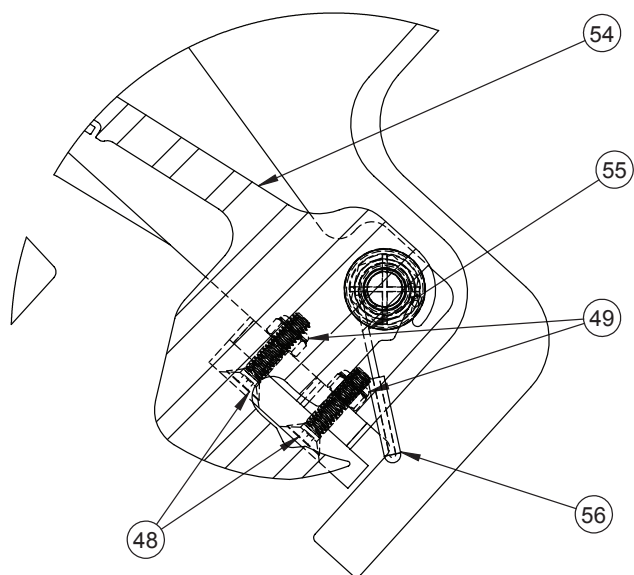
Stalk Assembly P/N: 605001007 14



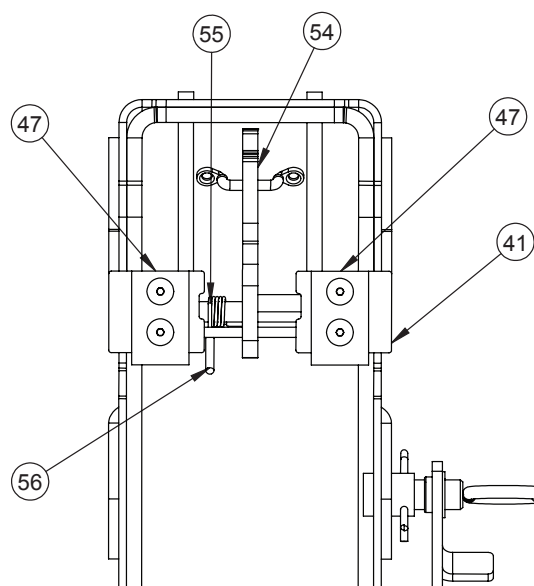
14 Stalk Assembly P/N: 605001007



SECTION C-C

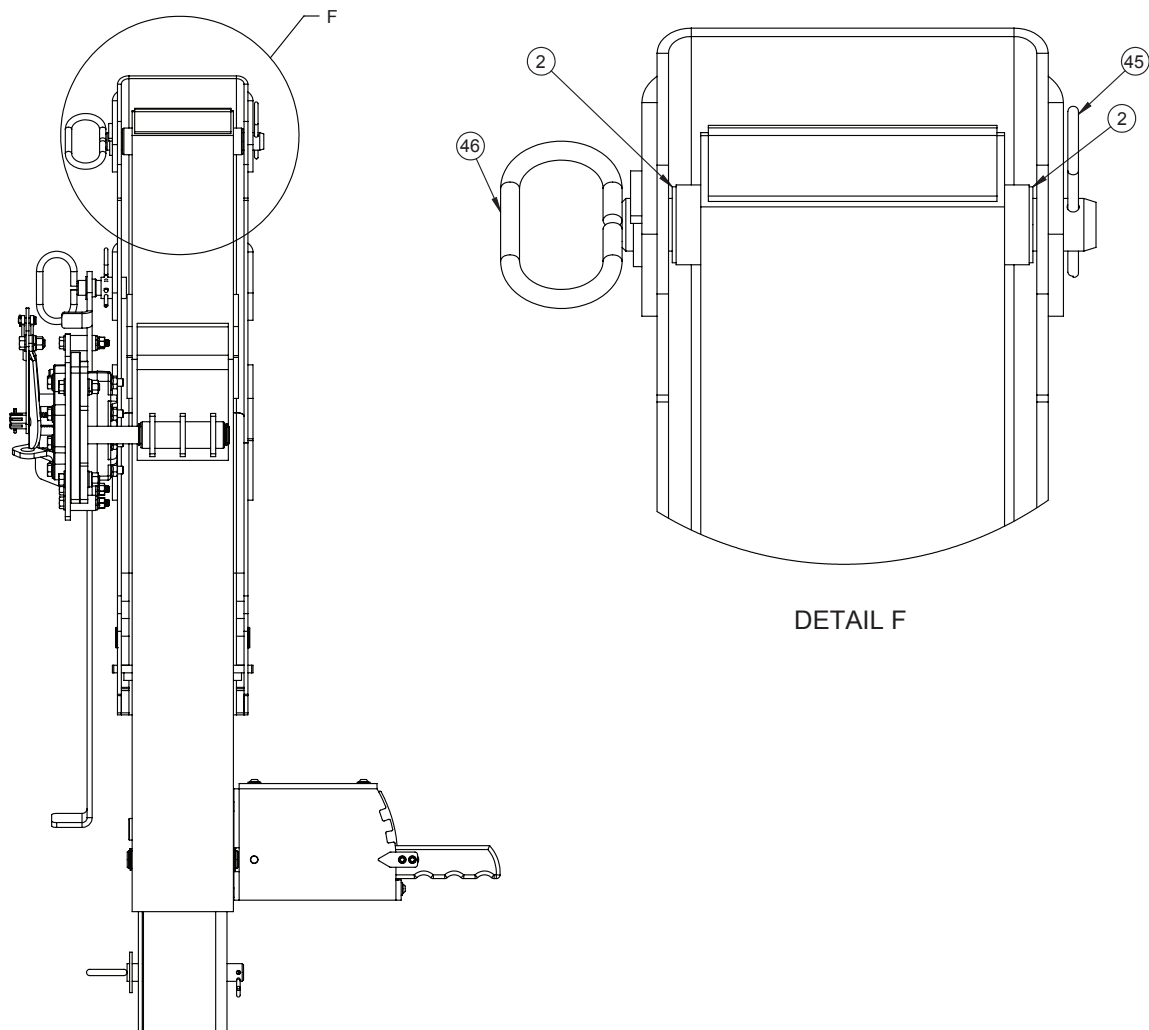


DETAIL D



SECTION E-E

Stalk Assembly P/N: 605001007 14

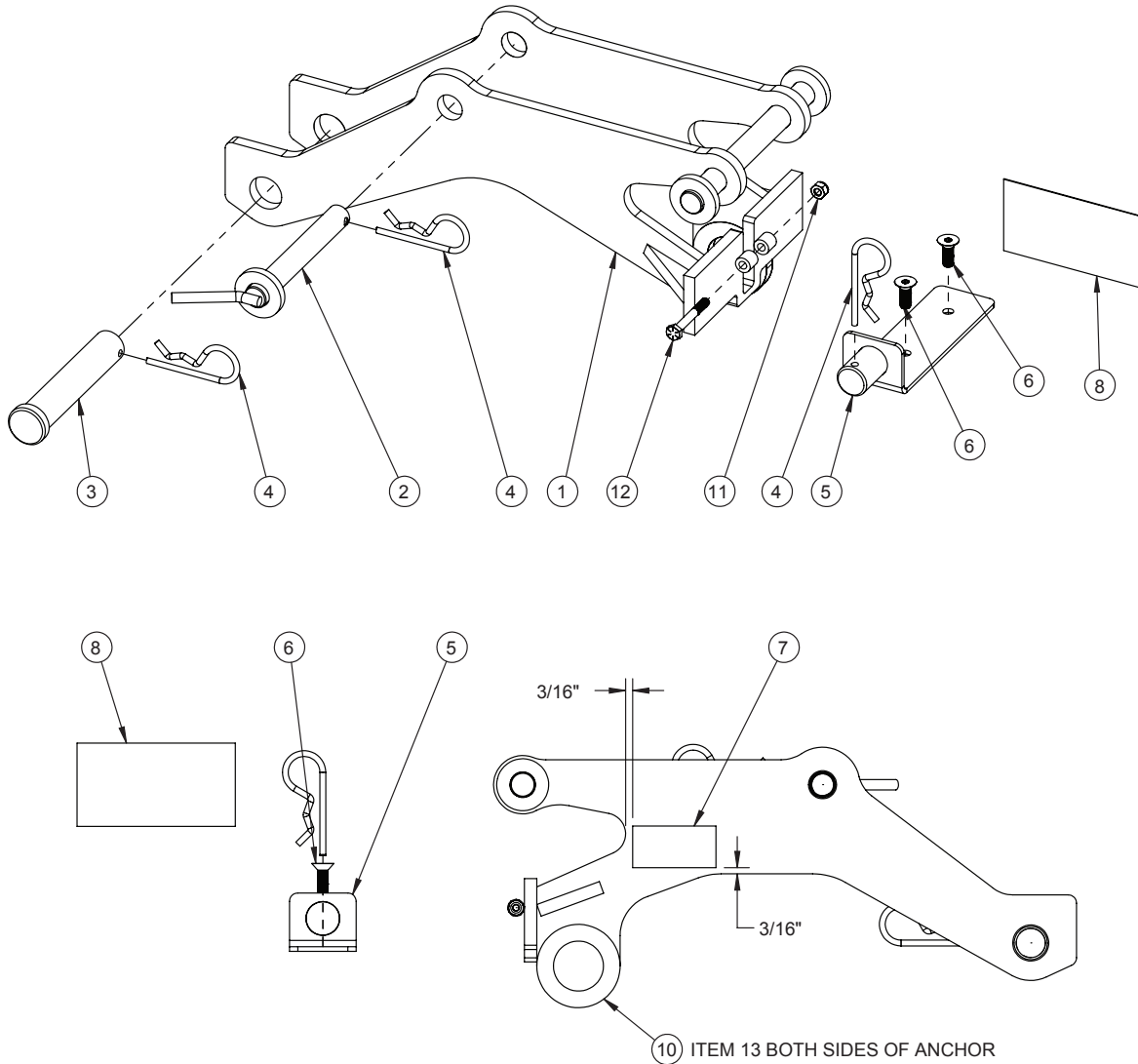


ITEM NO.	QTY	PART NUMBER	DESCRIPTION
1	1	605001096	WELDMENT, STALK, ALUM, 350 LBS. CAP.
2	4	605001109	BEARING, 1.25 FLANGE, 1.50 LG, PLASTIC, FOR 0.875 OD SHAFT
3	1	605001106	WELDMENT, SLEEVE, STALK, ALUM, 350 LBS. CAP.
4	1	605001123	PIN, 0.874 OD, 5.48 LG, MACHINED
5	2	736276000	NUTSERT 1/4 NC X .165-.260 GRIP
6	4	605001112	RETAINING RING, EXTERNAL, FOR 0.875 OD, ZINC PLATED
7	1	772027000	GROMMET, RUBBER, 1/2" ID, 1/2" THICK PLATE
8	1	605001124	PLATE, COVER, FRONT, BRAKE
9	2	005500000	SCREW HX HD 1/4-20 UNC X 3/4 LG
10	1	605001132	PIN, CLEVIS, 0.25 DIA, 0.38 HEAD DIA, 1.563 USABLE LG, 1.75 OAL, SS
11	2	605001131	SPACER, UNTHREADED, 0.50 OD, 0.252 ID, 0.38 LG, NYLON
12	1	605001126	WELDMENT, LEVER, BRAKE
13	1	605001130	BEARING, SPHERICAL, 0.66 OD, 0.25 ID, 0.38 WIDE, NYLON
14	2	605001129	PLUNGER, SPRING, SS, LONG NOSE, HIGH TORQUE, 1/4-20, 1-4 LBS. NOSE FORCE, 1.19 LG

14 Stalk Assembly P/N: 605001007

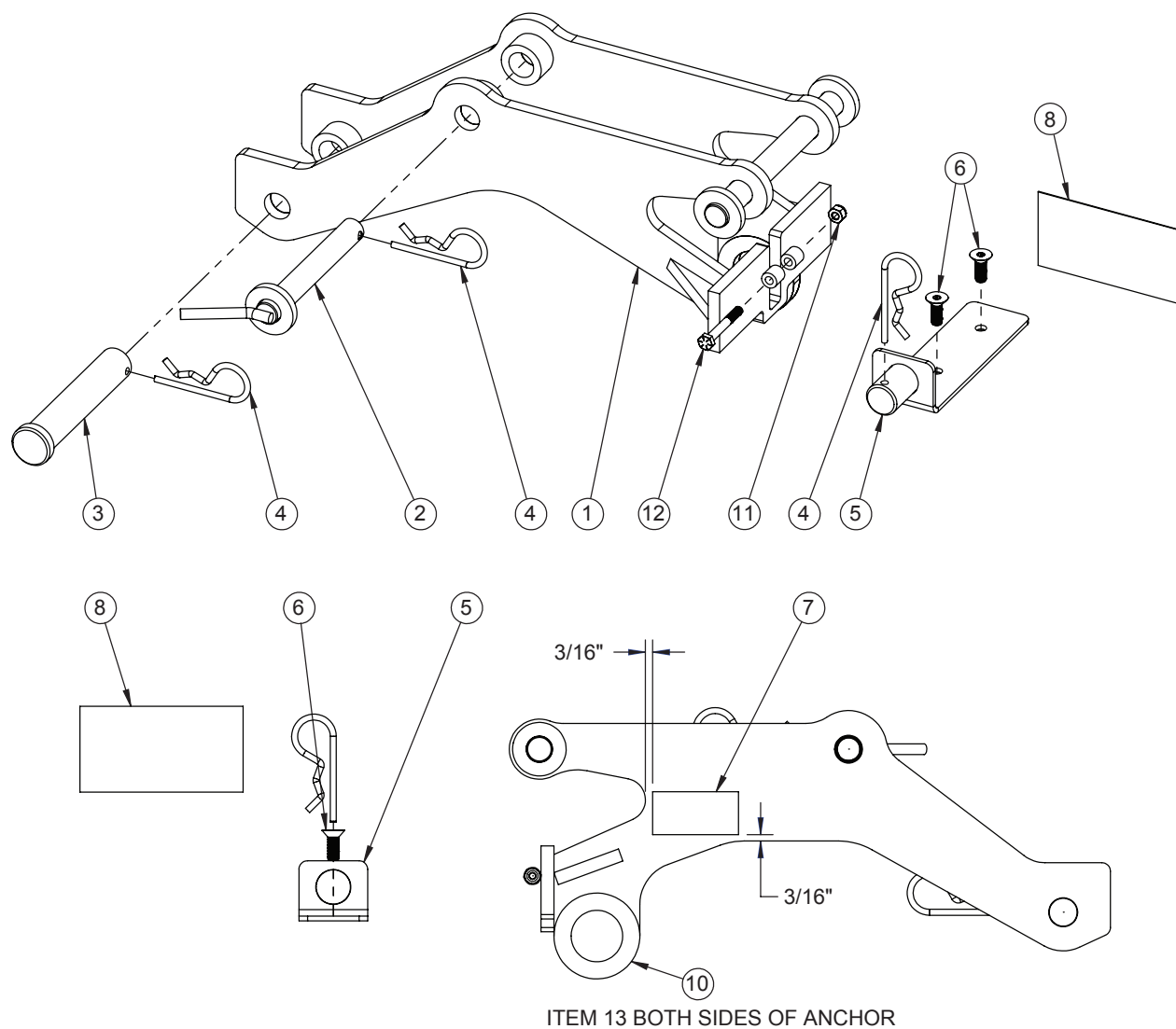
ITEM NO.	QTY	PART NO.	DESCRIPTION
15	2	605001119	CLEVIS, STEEL, 0.25 PIN, 1/4-28, ZINC PLATED, 2.25 LG
16	1	360767000	PAD BOOM 1.5 O.D.
17	2	605001134	SPACER, UNTHREADED, 0.50 OD, 0.252 ID, 0.25 LG, NYLON
18	1	605001135	BAR, 0.50 WIDE, 0.25 THICK, 1.375 LG, W/ HOLES
19	1	605001136	INDICATOR, BRAKE, STEEL, W/ CUTOUTS
20	2	005611000	SCREW SOC HD 1/4 UNC X 1 ZP GR8
21	1	605001137	HANDGRIP, W/ HOLES
22	1	605001125	PLATE, COVER, REAR, BRAKE
23	3	736272000	NUTSERT 1/4-20 UNC X .027-.165 GRIP
24	3	020400000	WASHER FL SAE 1/4
25	3	605001133	SCREW, BUTTON HD, HEX SKT, 1/4-20, 1.00 LG, ZINC PLATED
26	1	560093001	HAIR PIN .080 DIA X 1 3/16 LG
27	1	605001114	WELDMENT, PIVOT, BRAKE CALIPER
28	1	605001111	CALIPER, DISC BRAKE, W/ FLOATING BRACKET
29	1	605001117	BRACKET, CABLE, BRAKE CALIPER
30	6	021200000	WASHER FL 3/8
31	6	020901000	WASHER FL 5/16
32	2	460113000	SCREW HX HD 3/8-16 UNC X 1-3/4 LG GR8
33	3	021100000	WASHER SP LK 3/8
34	3	330372000	NUT HX 3/8 NC GR5
35	3	605001120	SPACER, UNTHREADED, 0.75 OD, 0.315 ID, 1.25 LG, NYLON
36	3	020600000	WASHER 5/16 LOCK SS
37	3	016500000	NUT HX 5/16-18UNC
38	3	605001121	SCREW, HX HD, 5/16-18, 2.25 LG, GR 5, ZINC PLATED
39	1	605001118	LEVER, BRAKE CALIPER, W/ HOLES
40	1	008701000	SCW HX 3/8 UNC X 1 GR5
41	1	605001139	WELDMENT, STALK, STEEL, 350 LBS. CAP.
42	1	605001113	BAR, BRAKE, SS, W/ HOLE
43	1	605001110	BEARING, 1.125 FLANGE, 0.50 LG, PLASTIC, FOR 0.75 OD SHAFT
44	1	605001157	WELDMENT, PIN, BRAKE BAR
45	4	360124000	PIN HITCH
46	1	605001152	WELDMENT, PIN, PIVOT, STALK
47	2	605001150	WEAR PAD, STOP PLATE, W/ HOLES
48	4	605001151	SCREW, FLAT HEAD, 1/4-20, 1.125 LG, ZINC PLATED
49	4	016300000	NUT HX NYLK 1/4-20 UNC
50	1	605001122	BRAKE CABLE
51	1	605001159	WELDMENT, PIN, STALK, REMOVABLE
52	1	605001006	LANYARD, PERSONNEL BASKET, SS
53	2	605001242	BUSHING, FLANGED, NYLON, 0.5 ID, .625 OD
54	1	605001256	WELDMENT, LATCH, STALK, SS
55	1	605001056	SPRING
56	1	605001058	CAP, PUSH-ON, EPDM, BLACK, 1.0625 OAL, FOR 5/64 DIA
57	2	605001254	PLUG, ROUND, SNAP-IN, PLASTIC, BLACK, FOR 0.84-0.95 ID
58	1	738058007	CAPSCREW-12/-13 UNC X 4, GR8
59	1	605001257	NUT, THIN, NYLON LOCK, 1/2-13
60	1	605001251	LANYARD, LATCH

Crown Adapter Kit P/N: 605001179 15



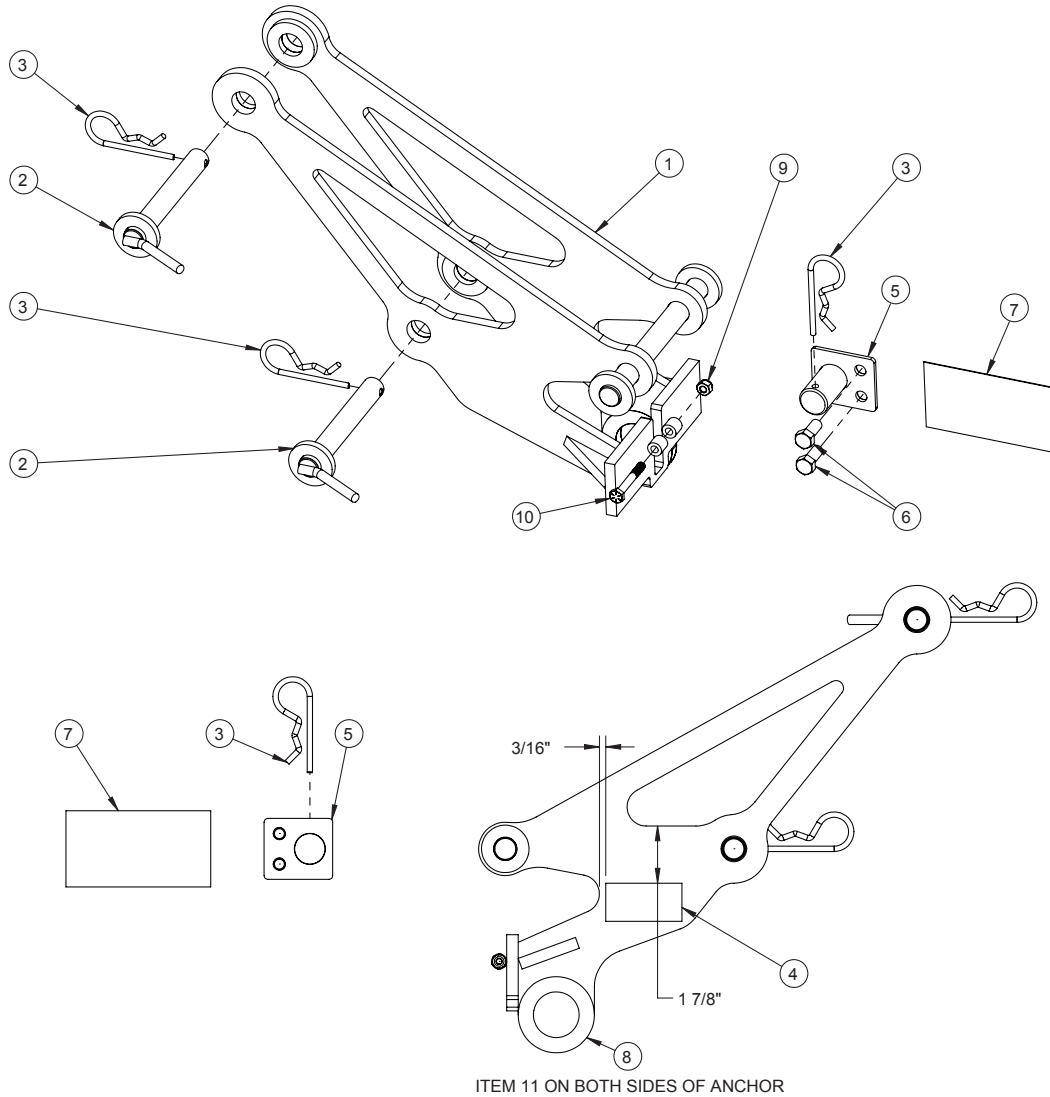
ITEM NO.	QTY	PART NUMBER	DESCRIPTION
1	1	605001163	WELDMENT, ADAPTER, PERSONNEL BASKET, CROWN, HC-7 THRU HC-12S
2	1	605001174	WELDMENT, PIN, SHEAVE, QUICK RELEASE
3	1	605001178	PIN, ROPE, HEADED, 1.00 DIA, 5.13 LG, W/ THRU HOLE
4	3	360124000	PIN HITCH
5	1	605001171	WELDMENT, CABLE STOW, 3/8 CABLE
6	2	479200304	SCREW SOC HD CTR SNK 5/16-24 UNF X 7/8
7	1	605001505	DECAL, ANCHOR POINT
8	1	605001504	DECAL, LOAD LINE STOW
9	2	479200307	5/16-24 X 1 FLAT SOCKET CAP SCREW, STEEL, ZINC PLATED
10	2	605001248	DECAL, ANCHOR, CONSPICUITY
11	1	016300000	NUT HX NY LK 1/4-20 UNC
12	1	605001253	SCREW HX HD, 1/4-20 X 2, GR8

15 Crown Adapter Kit P/N: 605001204



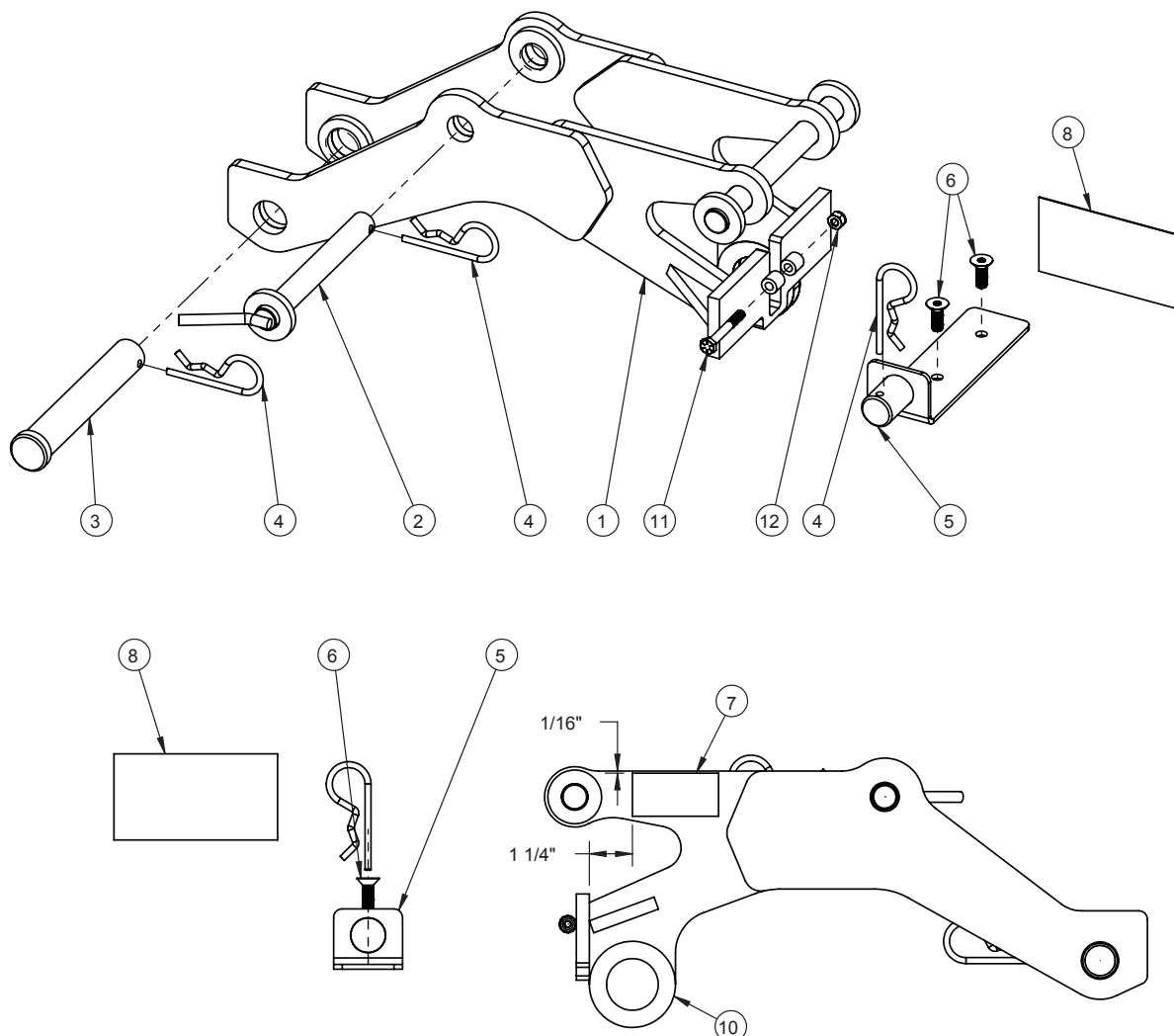
ITEM NO.	QTY	PART NUMBER	DESCRIPTION
1	1	605001202	ADAPTER, PERSONNEL BASKET, CROWN, HC-5 THRU HC-6
2	1	605001174	WELDMENT, PIN, SHEAVE, QUICK RELEASE
3	1	605001178	PIN, ROPE, HEADED, 1.00 DIA, 5.13 LG, W/ THRU HOLE
4	3	360124000	PIN HITCH
5	1	605001171	WELDMENT, CABLE STOW, 3/8 CABLE
6	2	479200304	SCREW SOC HD CTRSNK 5/16-24 UNF X 7/8
7	1	605001505	DECAL, ANCHOR POINT
8	1	605001504	DECAL, LOAD LINE STOW
9	2	479200307	5/16-24 X 1 FLAT SOCKET CAP SCREW, STEEL, ZINC PLATED
10	2	605001248	DECAL, ANCHOR, CONSPICUITY
11	1	016300000	NUT HX NYLK 1/4-20 UNC
12	1	605001253	SCREW HX HD, 1/4-20 X 2, GR8

Crown Adapter Kit P/N: 605001213 15



ITEM NO.	QTY	PART NUMBER	DESCRIPTION
1	1	605001206	WELDMENT, ADAPTER, PERSONNEL BASKET, CROWN, HC-7X/8X
2	2	605001174	WELDMENT, PIN, SHEAVE, QUICK RELEASE
3	3	360124000	PIN HITCH
4	1	605001505	DECAL, ANCHOR POINT
5	1	605001212	WELDMENT, CABLE STOW, 3/8 CABLE, HEX BOOM
6	2	738733100	SCREW HX HD 3/8-24 UNF X 7/8 LG
7	1	605001504	DECAL, LOAD LINE STOW
8	2	605001248	DECAL, ANCHOR, CONSPICUITY
9	1	016300000	NUT HX NYLK 1/4-20 UNC
10	1	605001253	SCREW HX HD, 1/4-20 X 2, GR8

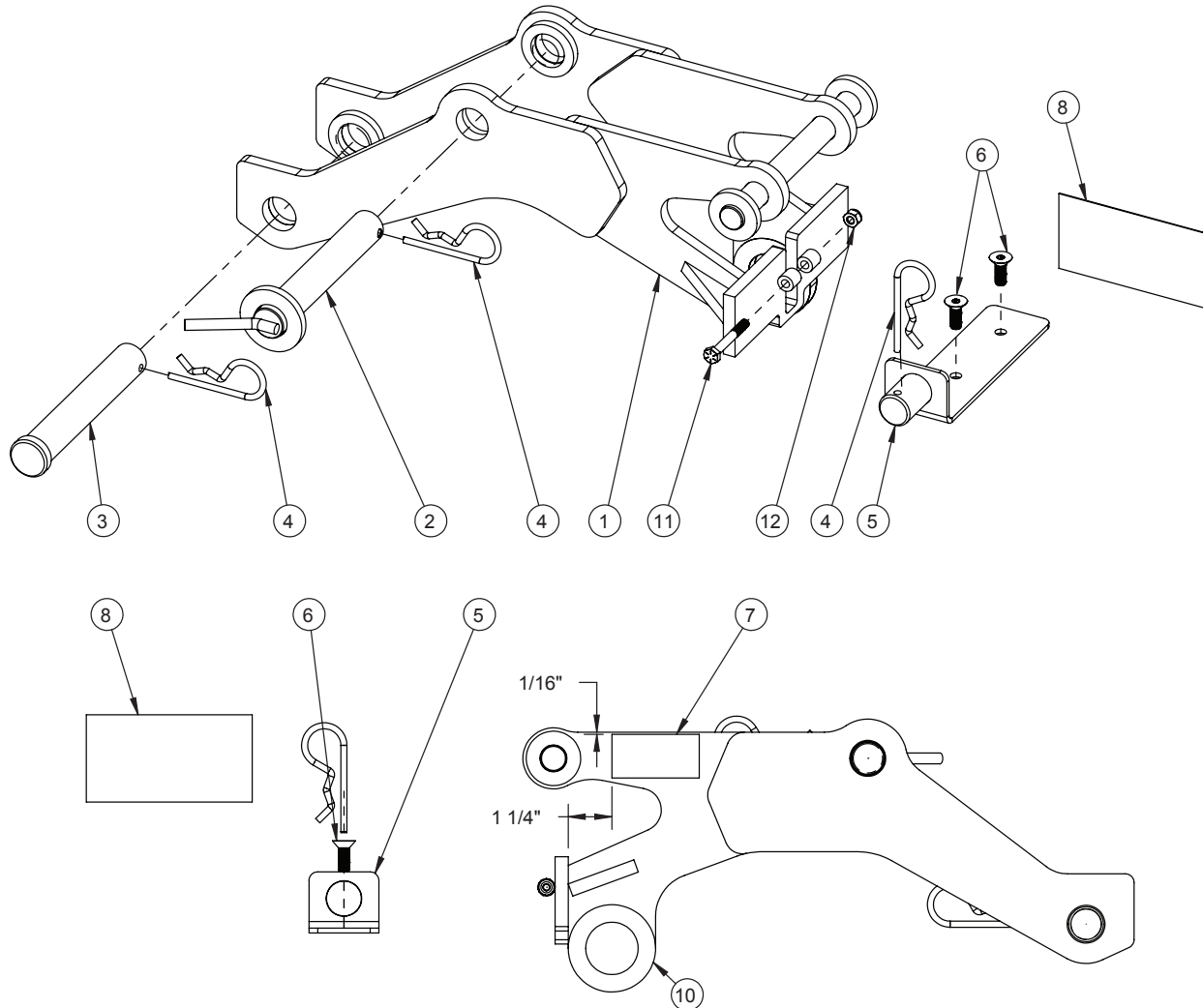
15 Crown Adapter Kit P/N: 605001221



ITEM 13 ON BOTH SIDES OF ANCHOR

ITEM NO.	QTY	PART NUMBER	DESCRIPTION
1	1	605001219	WELDMENT, ADAPTER, PERSONNEL BASKET, CROWN, HC-12
2	1	605001225	WELDMENT, PIN, SHEAVE, QUICK RELEASE, HC-12
3	1	605001226	PIN, 1 DIA 6-1/16 LG
4	3	360124000	PIN HITCH
5	1	605001228	WELDMENT, CABLE STOW, 3/8 CABLE, HC-12/14
6	2	479200304	SCREW SOC HD CTRS NK 5/16-24 UNF X 7/8
7	1	605001505	DECAL, ANCHOR POINT
8	1	605001504	DECAL, LOAD LINE STOW
9	2	479200307	5/16-24 X 1 FLAT SOCKET CAP SCREW, STEEL, ZINC PLATED
10	2	605001248	DECAL, ANCHOR, CONSPICUITY
11	1	605001253	SCREW HX HD, 1/4-20 X 2, GR8
12	1	016300000	NUT HX NYLK 1/4-20 UNC

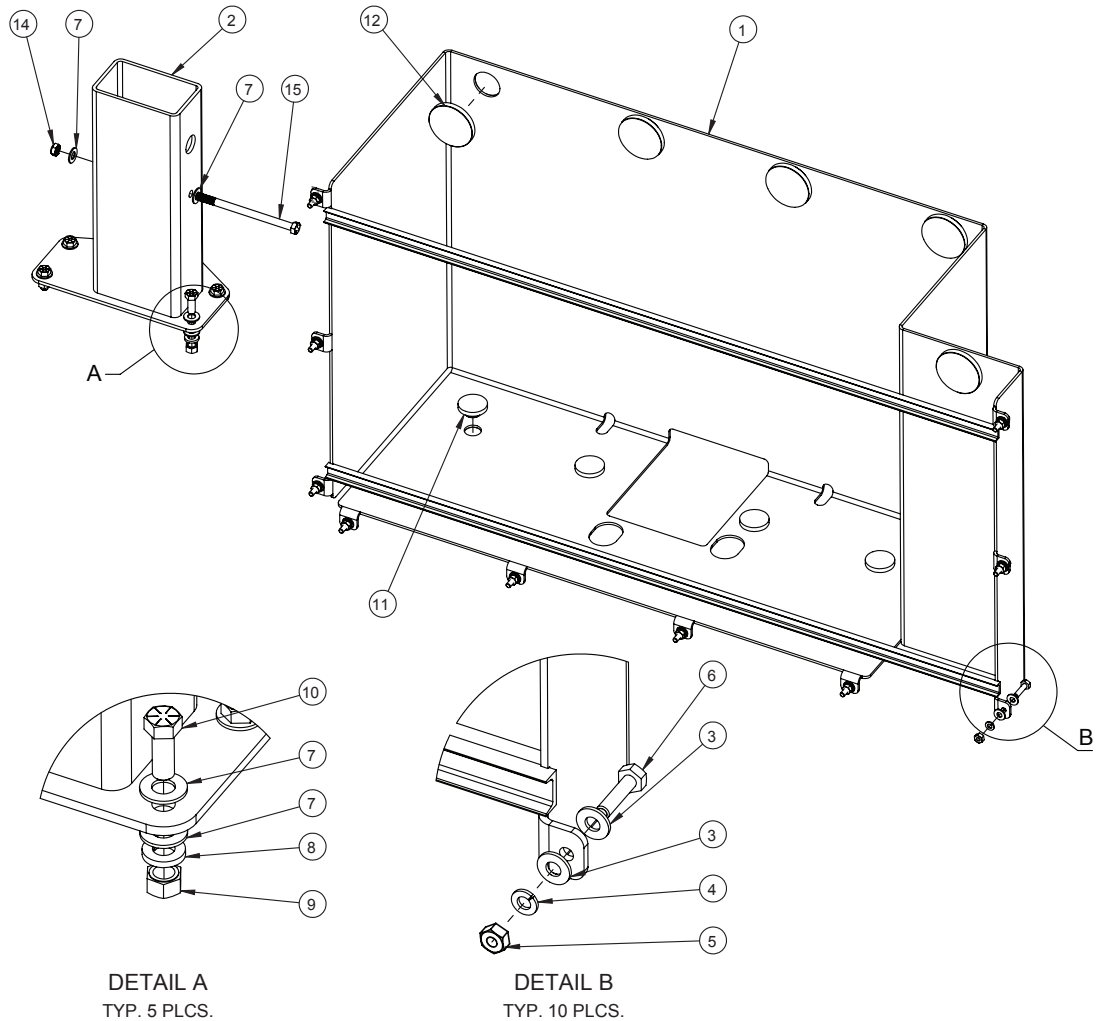
Crown Adapter Kit P/N: 605001222 15



ITEM 13 ON BOTH SIDES OF ANCHOR

ITEM NO.	QTY	PART NUMBER	DESCRIPTION
1	1	605001220	WELDMENT, ADAPTER, PERSONNEL BASKET, CROWN, HC-14
2	1	605001231	WELDMENT, PIN, SHEAVE, QUICK RELEASE, HC-14
3	1	605001226	PIN, 1 DIA 6-1/16 LG
4	3	360124	PIN HITCH
5	1	605001228	WELDMENT, CABLE STOW, 3/8 CABLE, HC-12/14
6	2	479200304	SCREW SOC HD CTRSNK 5/16-24 UNF X 7/8
7	1	605001505	DECAL, ANCHOR POINT
8	1	605001504	DECAL, LOAD LINE STOW
9	2	479200307	5/16-24 X 1 FLAT SOCKET CAP SCREW, STEEL, ZINC PLATED
10	2	605001248	DECAL, ANCHOR, CONSPICUITY
11	1	605001253	SCREW HX HD, 1/4-20 X 2, GR8
12	1	016300	NUT HX NYLK 1/4-20 UNC

Storage Kit P/N: 605001180 16



ITEM NO.	QTY	PART NUMBER	DESCRIPTION
1	1	605001001	WELDMENT, FOLDING PERSONNEL BASKET STORAGE, VERTICAL, BOLTON
2	1	605001005	WELDMENT, STALK STORAGE
3	20	020400	WASHER FL SAE 1/4
4	10	020200	WASHER SP LK 1/4
5	10	015900000	NUT HX 1/4-20 UNC SS
6	10	005604	SCREW HX HD 1/4-20 UNC X 1 LG
7	12	021200	WASHER FL 3/8
8	5	021100	WASHER SP LK 3/8
9	5	330372	NUT HX 3/8 NC GR5
10	5	330371	SCREW HX HD 3/8-16 UNC X 1 LG GR8
11	4	360767000	PAD BOOM 1.5 O.D.
12	5	407203000	PAD, BOOM, 2.50 O.D. x .563 THK
13	2	725039000	STRAP HOLD DOWN OXY/ACET
14	1	017400000	NUT HX HL-LOCK 3/8 NFCP
15	1	009900000	SCREW HX HD 3/8 UNF X 5 1/2 GR5



P.O. Box 580697 Phone: (918) 438-2760
4707 N. Mingo Rd. Tulsa, OK 74158-0697

LIMITED WARRANTY 2 YEAR PARTS AND LABOR

Auto Crane will warranty to the consumer for a period of (2) years parts and labor from the date of purchase. Each new Auto Crane product sold will be free, under normal use and service, from defects in material and workmanship. Date of purchase will be honored as the date indicated on the Bill of Sale, which must accompany the Warranty Registration and be on file with Auto Crane. Absent a valid Warranty Registration and appropriate documentation, the original date of manufacture, as indicated by the serial number on the product, will be used to determine the effective date of the 2 year warranty.

The obligation of Auto Crane under this warranty is limited to the replacement or repair of parts that appear to the manufacturer after review and/or inspection to be defective and paid flat rate labor for replacing defective parts. This warranty does not obligate Auto Crane to bear the travel time charges in connection with the replacement or repair of defective parts. Responsibility for customer's claims arising from misapplication, abuse, misuse or alteration of equipment or parts lies with the distributor or user and no warranty obligation is assumed under these circumstances by Auto Crane.

Auto Crane will in no event be liable for any consequential damages or contingent liabilities arising out of the failure of any Auto Crane Product or parts to operate properly.

Auto Crane makes no warranty in respect to component accessories, it being subject to the warranties of their respective manufacturers.

If field service, at the request of the distributor, is rendered and fault is found not to be with Auto Crane's product, the distributor shall pay the time and expense of the field representative.

Claims for service labor or other expenses that have incurred by the buyer without approval or authorization from Auto Crane will not be accepted.

When applying for warranty, claims may be handled by contacting your nearest authorized Auto Crane Distributor. All claims are to be filed in writing on an Auto Crane Warranty Claim Form.

AUTO CRANE COMPANY IS UNDER NO OBLIGATION TO EXTEND THIS WARRANTY TO ANY CUSTOMER FOR WHICH AN AUTO CRANE DELIVERY REPORT FORM HAS NOT BEEN COMPLETED AND IS ON FILE WITH AUTO CRANE.

MANDATORY APPENDIX I
PERSONNEL LIFT PLATFORM PLANNING AND AUTHORIZATION FORM

1. Location: _____ Date: ____ / ____ / ____

2. Purpose of lift: _____

3. Hoisting eqpt. mfg: _____ Model#: _____ Serial#: _____

4. Expected radius: _____ (maximum): _____ (at work location)

5. (A) Rated load at radius: _____ (B) Maximum lift load: _____ [50% of 5(A)]

6. Platform ID: _____ Platform rating: _____

7. Platform weight: _____ Type: (Pin On) _____ (Suspended) _____

8. (A) Number of platform occupants: _____ (B) Approx. wt. (With equip): _____

9. Total lift weight: _____ [7 + 8(B)] [No more than 5(B) above]

10. Personnel lift supervisor: _____

11. What are the alternatives to this personnel lift? _____

12. Why are they not being used? _____

13. Pre-lift briefing held: _____ AM/PM

Attendees: _____

14. Anticipated hazards (wind, weather, visibility, power lines): _____

15. Lift accomplished date: _____ Time: _____

16. Remarks: _____

Personnel Lift Authorizer Signature / Date

MANDATORY APPENDIX II PERSONNEL LIFT PLATFORM PRE-LIFT INSPECTION

Inspector: _____ Date: ____ / ____ / ____

Platform ID: _____

Frequent Inspection

Markings	Sat	Unsat
Platform (all information legible)	_____	_____
Suspension system	_____	_____

Structure

Load-supporting welds/bolts	_____	_____
Load-supporting members	_____	_____
Barrier from toeboard to intermediate rail	_____	_____
Handrail	_____	_____
Fall protection device anchorage points	_____	_____
Gate-locking mechanisms	_____	_____
Platform flooring	_____	_____
Suspension attachment points	_____	_____

Attachment Mechanisms

Pins/ears/bolt-ups/eyes (circle)	_____	_____
Wire rope/chain/rigid leg (circle)	_____	_____
Master links	_____	_____

Periodic Inspection

Greasing hinges	_____	_____
Proper Brake operation	_____	_____

General comments: _____

Lift Director Signature

