

Auto Crane Company

P.O. BOX 580697 • TULSA, OKLAHOMA 74158-0697
4707 N. MINGO ROAD • TULSA, OKLAHOMA 74117
918-836-0463 • TELEX 158108 RAMSEY TUL
FAX 918-438-6688

OWNER'S MANUAL

6006H

SERIAL NO. RV001-4-88

6006H SERIES - OWNER'S MANUAL

- CONTENTS -

	SECTION/PAGE
1. INTRODUCTION.....	1-1.0.0
2. INSTALLATION	2-1.0.0
3. LUBRICATION	3-1.0.0
4. GENERAL ASSEMBLY	4-1.0.0
5. ELECTRICAL SECTION	5-1.0.0
6. HYDRAULIC SECTION	6-1.0.0
7. GENERAL DIMENSIONS	7-1.0.0
8. OUTRIGGERS	8-1.0.0
9. WARRANTY	LAST PAGE



AUTO CRANE COMPANY

INTRODUCTION 6006H SERIES

Auto Crane products have been engineered to provide safe, trouble-free, dependable service for many years when these products are properly used and maintained.

To assist you in obtaining the best service from your crane and to avoid untimely failure of the unit and/or the vehicle on which it is mounted, the following operating and service instructions are herein published, and it is specifically recommended that all operating and service personnel consider this manual as mandatory material for reading and study before operating or servicing Auto Crane products. It is highly recommended that crane owners, equipment managers and supervisors also read this manual.

Auto Crane has incorporated several safety features in the 6006H series for your protection. The material and electrical systems were designed to minimize weight and lengthen durability. The hydraulic components are designed for a 4:1 safety factor. Holding valves are installed on the power versions to prevent the load from dropping if a hose should fail. A 10u filter is installed in the hydraulic system to remove dirt and grit that may cause premature failure. The reservoir is protected with a 15u filter in the filler cap, and a 40 mesh strainer in the suction line.

For your convenience the overall dimensions of the 6006H series are included on the General Dimension Drawing. Rotation and turning radius are also listed.

Remember that the crane adds weight to the vehicle and may change the driving and riding characteristics of the vehicle on which it is mounted unless this weight is properly provided for with appropriate overload springs. The payload of the vehicle is also reduced by the amount that the crane weighs, and as the vehicle is loaded, care should be exercised not to overload the vehicle. Exercising care in distributing the payload on the vehicle will greatly improve the driving and riding characteristics of the vehicle. A minimum G.V.W. of 14,500 lbs. is recommended for mounting the 6006H series cranes.

Auto Crane Company issues a limited warranty certificate with each unit sold.

See last page for warranty policy.

It has always been Auto Crane Company policy to handle all warranty claims we receive as promptly as possible. If material or workmanship is involved, immediate corrective action is taken. It

is therefore, understandable that Auto Crane Company cannot assume responsibility or liability when our products have obviously been abused, mis-used, overloaded or otherwise damaged by inexperienced persons trying to operate the equipment without even reading the manual. The Auto Crane is designed and built to be safe and efficient. Auto Crane will not assume responsibility or liability for any unit which has been modified, changed, or which has unauthorized or unapproved components installed.

Auto Crane maintains a strong distributor network and a knowledgeable Customer Service Department. In most cases an equipment problem can be solved through a telephone conversation with our Customer Service Department. The Customer Service Department also has the ability to bring a local distributor, a regional sales manager, or a factory serviceman into the solution of an equipment problem if necessary. If through no fault of Auto Crane Company it is necessary to send an experienced factory serviceman on a field service call, the rates stated in the Auto Crane, Distributor's Flat Rate Manual will apply.

Auto Crane Company's extensive Research and Development Program assures our customers of the best equipment on the market, and our Engineering Staff, as well as our knowledgeable sales people are always available to our customers in solving crane and winch-type application problems. When in doubt-call the the Auto Crane factory.

DISTRIBUTOR ASSISTANCE:

Should you require any assistance not given in this manual, we recommend that you consult your nearest Auto Crane Distributor. Our distributors are stocked with authorized replacement parts and a service department that can solve almost any needed repair.

NOTE: THIS MANUAL SHOULD REMAIN WITH THE CRANE AT ALL TIMES.

The material herein does not imply to cover all maintenance, instructions, operations, or variations pertinent to every possible situation. If additional information is required, please refer to the Auto Crane Company at the following telephone number: 918 - 438-2760. The information contained in the manual was in effect at the time of printing. Auto Crane Company reserves the right to update this material at any time without prior notice or obligation.

-IMPORTANT-

SAFETY TIPS AND PRECAUTIONS

1. Make certain the vehicle meets minimum chassis requirements. (These requirements do not guarantee unit stability.)
2. Make certain the crane is installed per factory specifications. Contact your local Distributor or the Auto Crane factory if any questions arise.
3. Keep the vehicle in as level a position as possible while loading or unloading.
4. ALWAYS set the vehicle emergency brake before beginning crane operations
5. ALWAYS use outriggers from vehicle to the ground during crane operation. Insure that they are firmly positioned on solid footings.
6. All load ratings are based on crane capacity, NOT unit stability.
7. ALWAYS comply with load chart capacities (centerline of rotation to hoist hook).
8. NEVER OPERATE THE CRANE NEAR ELECTRICAL POWER LINES. Auto Crane Company recommends that a crane never be moved any closer to a power line (including telephone lines) than 20 feet at any point.
9. Keep objects and personnel clear of crane path during operation.
10. Keep hoist cable pulled tight at all times.
11. **WARNING NEVER** un-reel last wrap of cable from drum.
12. **WARNING NEVER** wrap cable around load.
13. **REMEMBER** - in lifting a heavy load, the weight can create enough tipping moment to overturn the vehicle.
14. **WARNING NEVER** attempt to lift or drag a load from the side- the boom can fail far below its rated capacity.
15. Oil gears as required.
16. Periodic adjustment of hoist worm brake may be required (see automatic safety brake drawing, page 4-5.0.0).
17. **WARNING NEVER** weld, modify, or use unauthorized components on any Auto Crane unit. This will void any warranty or liability. Also failure of the crane may result.
18. An important item which an operator should consider and use properly is the hoist hook. It should be checked on a 30-day basis for distortion or cracks.
19. **WARNING NEVER** place a chain link on the tip of the hook and try to lift a load with the hoist.
20. **WARNING NEVER** use a sling bar or anything larger than the hook throat which could prevent the hook from closing with the block, thus negating the safety feature.
21. **WARNING** In using a safety hook, ALWAYS insure that the hook throat is closed before lifting a load. Proper attention and common sense applied to the use of the hoist hook and various slings will prevent possible damage to material being hoisted and may prevent injury to personnel.
22. **WARNING NEVER** hold any pendant Select switch on that will negate safe operating conditions.
23. ALWAYS store outriggers before road travel.
24. **WARNING NEVER** use crane for hoisting personnel.

OPERATION OF UNIT

1. Make sure this manual has been thoroughly read by all crane operating personnel.
2. A routine inspection of the crane should be mandatory before each operating day. Any defects should be corrected immediately.
3. At a job site the vehicle should be positioned so that the crane can adequately reach the load within the rated capacity (centerline of rotation to hoist hook).
4. Keep the vehicle as level as possible during operation.
5. Engage emergency brake, block wheels, and turn ignition off with transmission left in gear or in park (for automatic transmissions). This is for Auto Crane units requiring only battery operation. For larger Auto Crane units requiring battery and hydraulic operation, engage emergency brake and place gear select in neutral; press clutch and pull PTO knob in gear; release clutch and set throttle control to proper engine speed.
WARNING: DO NOT EXCEED ENGINE SPEED NECESSARY TO MEET PUMP RPM REQUIREMENT - (see hydraulic section) POSSIBLE DAMAGE MAY RESULT.
6. Always use outriggers from the truck to the ground. Be sure these are firm and adequately positioned.
7. Then remove pendant control from cab (on smaller units) and plug into receptacle on crane. Crane is now ready for operation. On Auto Crane's larger units, remove pendant control from guard and unwrap cable from boom. Crane is now ready for operation. **DO NOT OPERATE CRANE WITH CABLE WRAPPED AROUND BOOM LOOPS.**
8. Always boom up before rotating so that the boom will clear the required boom support.
9. When extending the boom always maintain clearance between the boom crown and the traveling block or hoist hook.
10. Always observe safe and practical operation to avoid possible accidents. Refer to Safety Tips and Precautions.
11. After completing lifting operations, return the boom to stowed position on the boom support. Avoid excess pressure on the boom support.
12. Store pendant control on proper location (in cab or on crane).
13. Return outriggers to stowed position. Make sure they are pinned in place or jacklegs are returned to compartment.
14. Check work area for any tools or equipment not stored.
15. Press clutch and disengage PTO. Release throttle control and emergency brake.
16. Report any unusual occurrence during crane operation that may indicate required maintenance or repair.

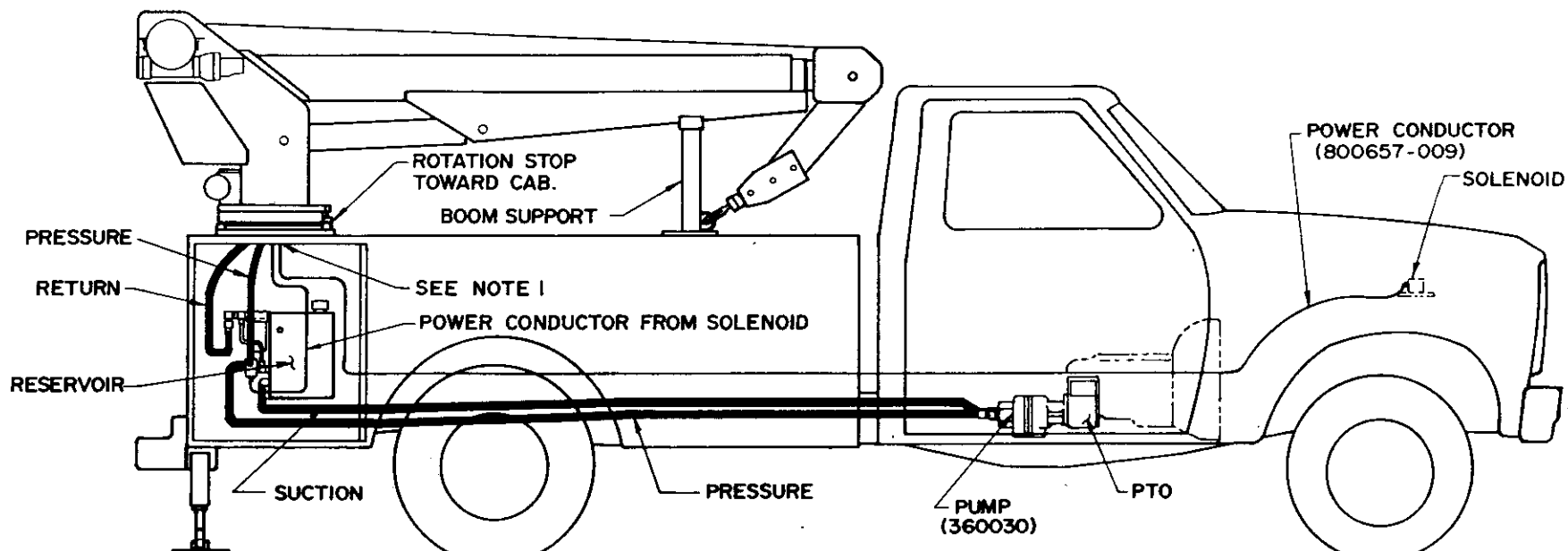
OPERATION OF HYDRAULIC OUTRIGGERS

1. Prior to operating outriggers, detach crane hook from dead man.
2. Shift crane - outrigger selector valve to "outrigger" position.
3. While operating the outrigger control valves (located on the outrigger cylinders), simultaneously operate the boom-up control switch. This will allow hydraulic system to build pressure.
4. After outriggers are positioned, return crane-outrigger selector valve to "crane" position. Crane is now ready to operate.

MOUNTING AND INSTALLATION 6006H

1. Vehicle should meet minimum GVW rating of 14,500
2. Make sure compartment or crane mount is adequately reinforced.
3. A 13 1/2" Dia. hole should be cut out of mounting location (centered with mounting bolts, for access of lower ring gear bolts and hydraulic connections.
4. Mounting bolts (015104 - Screw, Hx. 7/8 N.F. x 5" G5, 4 required) to be torqued to 440 ft. lbs. (dry).
5. Power conductor (Item 46, 800657-009, Drawing AW-366000 to be uncoiled from bottom of crane and routed to positive pole on starter solenoid.
6. Pressure and return hoses and fittings are not furnished with crane. These items are normally calculated, (length) at installation. Refer to reservoir ass'y, AW480150. **NOTE:** The reservoir should be thoroughly flushed out before installing the hydraulic hoses to the crane.
 - A) Return line from crane to reservoir
hose - size 8 (SAE 100 R2 type AT) at desired length.
Fittings - one - 10 JIC female swivel fitting, (reservoir end). One - 8 JIC female swivel fitting (crane end).
 - B) Pressure line from vented relief valve to crane
Hose - size 8 (SAE 100 R2 type AT) at desired length.
Fittings - two - 8 JIC female swivel fittings.
 - C) Suction hose from pump to reservoir.
Hose size 16 (SAE 100 R4) at desired length.
Fittings - one hose adapter - 16 JIC female swivel fitting (pump end).
One - 16 straight adapter (reservoir end). Four hose clamps - 16 (two each end).
 - D) Pressure line from pump to vented relief valve
Hose - size 12 (SAE 100 R2 type AT) at desired length.
Fittings - two - 10 JIC female swivel fittings.
- NOTE:** If no pressure received at reservoir, alternate hose connections at pump.
7. When crane is not in operation, a boom support should always be used. Traveling block should be connected to hook loop.
8. Always use cable loops on boom and pendant guard to store pendant assembly.
9. Crane operation requires 8 G.P.M. at 2200 p.s.i.
10. **THE VEHICLE MUST BE EQUIPPED WITH AN ENGINE SPEED CONTROL AND TACHOMETER.**

2-2.0.0



NOTES

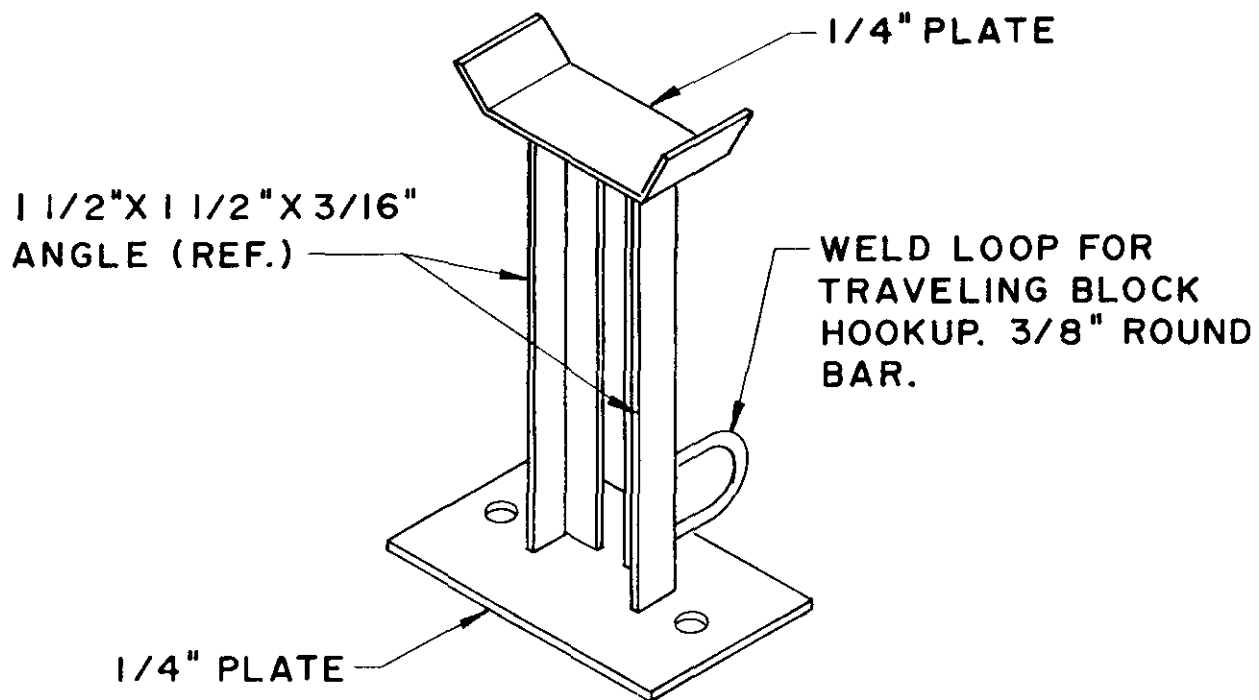
1. AFTER POWER CONDUCTORS ARE INSERTED THROUGH HOLE IN BASE OF CRANE, SEAL ALL AROUND WITH SILICONE RUBBER, OR EQUAL, TO PREVENT WIRE DAMAGE.

MOUNTING AND INSTALLATION, 6006H

AW - 072

AUTO CRANE'S SUGGESTED BOOM SUPPORT

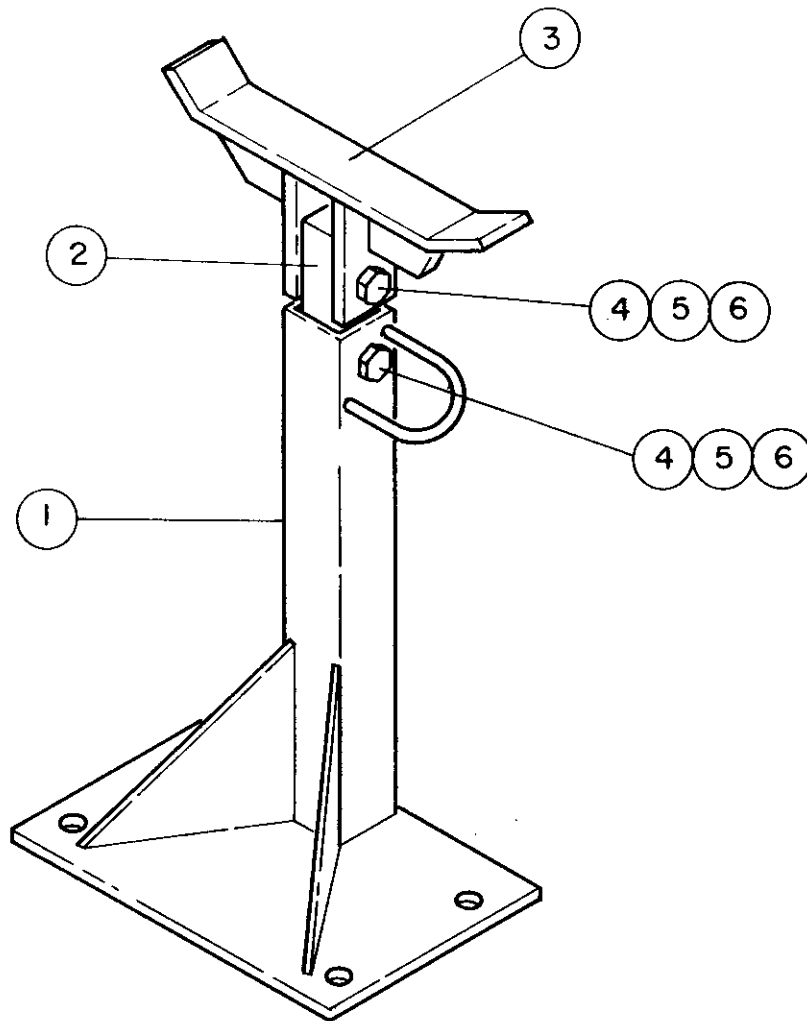
LEAVE $\frac{3}{4}$ " CLEARANCE ON EACH SIDE OF BOOM



BOOM SUPPORT IS REQUIRED.

AUTO CRANE COMPANY

P.O. BOX 580697 TULSA OKLAHOMA 74158-0697
4707 N. MINGO ROAD 918-836-0463



<u>ITEM</u>	<u>QTY.</u>	<u>PART NO.</u>	<u>DESCRIPTION</u>
1	1	750586	BASE
2	1	750596	EXTENSION TUBE
3	1	750589	BOOM SUPPORT
4	2	009800	BOLT, HX. 3/8" X 3 1/2"
5	2	017102	NUT HX. 3/8" NF
6	2	021101	WASHER, SR LK. 3/8"

AW-081 BOOM SUPPORT (P/N 750585)

WIRE LINE LUBRICATION

Lubrication of the wire line serves two important purposes: (1) helps to prevent corrosion; (2) lubricates the cable strands to reduce wear due to flexing and abrasion caused by contact with the sheaves, rollers and cable on the drum.

PREPARATION:

Remove rust and foreign matter with a wire brush and wipe clean. Be sure cable is dry.

APPLICATION:

Two methods are illustrated in figures 1 and 2. A light weight motor oil may be used, as in figure 1; or a heavier lubricant such as grease gun lubricant, as in figure 2.

Illustrated in figure 1 is one easy and effective method of applying lubrication. Dip the brush into the lubricant and apply. In some cases a rag or piece of sheepskin is dipped in the lubricant and used to swab the lubricant on to the rope.

Another simple method is shown in figure 2. Leather gloves are preferred to canvas because of greater protection and less penetration of the grease.

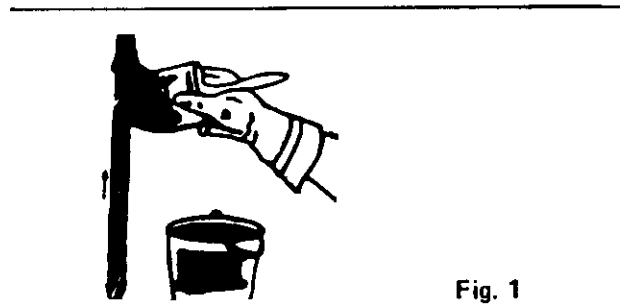


Fig. 1

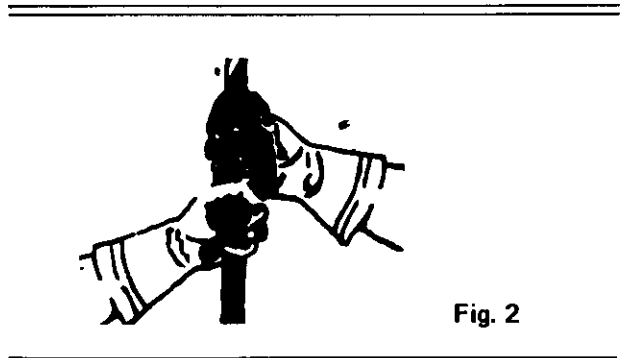


Fig. 2

"LIFE OF WIRE LINE"

So many variable factors can cause the deterioration of wire line cable that it is not possible to determine a definite life expectancy.

Some of these factors are:

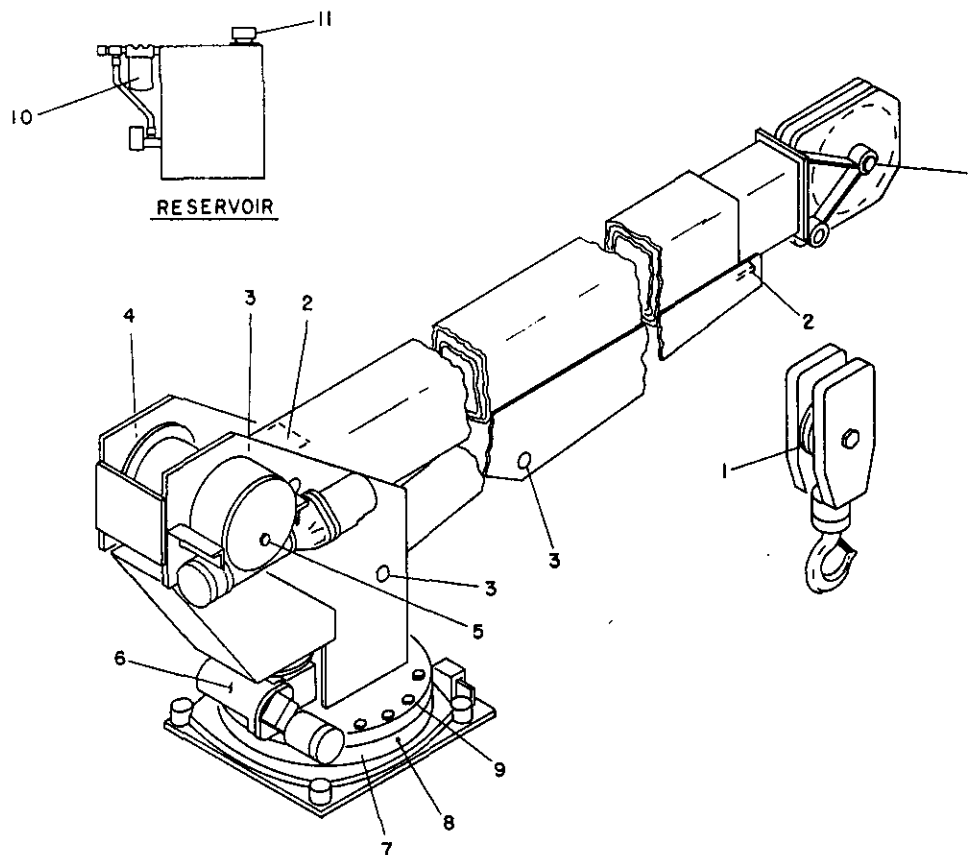
1. Load being handled.
2. Corrosive conditions.
3. Maintenance of the unit.
 - a. Keep the sheaves turning freely.
 - b. Maintain tension on cable to insure proper spooling.
 - c. Lubricate line. (See above)
 - d. Avoid kinks in cable.
 - e. Avoid abrasive action and contact with sharp corners.
4. Frequency of use.

Auto Crane units, with 6000 pound ratings, use 3/8 inch diameter galvanized preformed 7 x 19 aircraft cable which, when new, has minimum strength of 14,400 pounds. It is recommended when 4,000 pound loads are exceeded to use a two-part line with a traveling block. It can be seen that there is a safety factor of 3.6 to 1 when the cable is new.

Keeping the above factor of safety in mind and knowing the kind of loads that will be handled, the user can determine by inspection of the cable as to when it should be replaced.

Items to look for while inspecting the cables are:

1. Broken strands.
2. Kinks and flattened sections.
3. Corrosion and abrasion.



1. SHEAVE ROLLER BEARING SEALED TYPE. NO LUBE REQUIRED.
2. BOOM PADS: IF REPLACED, GREASE UPON INSTALLATION USE CHASSIS LUBRICANT.
3. GREASE ZERK: PIVOT POINTS, LUBE ONCE A WEEK. USE MOBILPLEX EP-2 OR EQUIVALENT.

(CYLINDER CROSSTUBE @ BOOM)
 (CYLINDER CROSSTUBE @ PEDESTAL)
 (BOOM PIVOT)

4. HOIST ROLLER BEARINGS: SEALED TYPE. NO LUBE REQUIRED.
5. HOIST ACTUATOR: MAINTAIN LUBE AT PLUG. USE EXTREME PRESSURE GEAR LUBE (E.P. 80-90). SPUR GEAR TO USE 30 WT. OIL. REPLACE LUBE EVERY SIX MONTHS.
6. ROTATION GEAR BOX: REQUIRES 1 3/4 PINT OF EPO-140. REPLACE EVERY SIX MONTHS.
7. RING GEAR: LUBE EVERY 3 MONTHS AT PINION. USE MOBILTAC LL OR EQUIVALENT.
8. RING GEAR RACE: LUBE EVERY 3 MONTHS AT ZERK. USE MOBILPLEX EP-2 OR EQUIVALENT.
9. BOLTS: RING GEAR - PEDESTAL BASE. REQUIRED TORQUE OF BOLTS IF REPLACED - 150#LBS. HARDENED WASHERS REQUIRED.
 NOTE: BOLTS SHOULD BE CHECKED PERIODICALLY AND RETIGHTENED TO PROPER TORQUE. THE POSSIBILITY EXISTS THAT DUE TO THE STRESSES APPLIED TO THE ROTATION SYSTEM, THE BOLTS COULD WORK LOOSE.
10. RESERVOIR FILTER: 10 MICRON SPIN ON FILTER REQUIRED. REPLACE EVERY 3 MONTHS.
11. HYDRAULIC FLUID: USE DTE-13 OR EQUAL TO KEEP LEVEL AT SIGHT GAUGE. RESERVOIR SHOULD BE FLUSHED AND NEW FLUID ADDED EVERY 2 YEARS OR IF A HYDRAULIC FAILURE OCCURS.

AW-074, LUBRICATION MAINTENANCE

GENERAL ASSEMBLY - 6006H, AW-366000

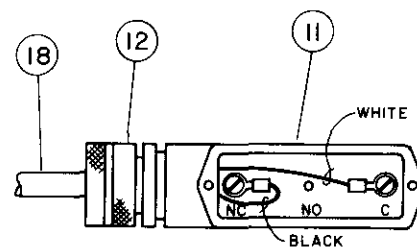
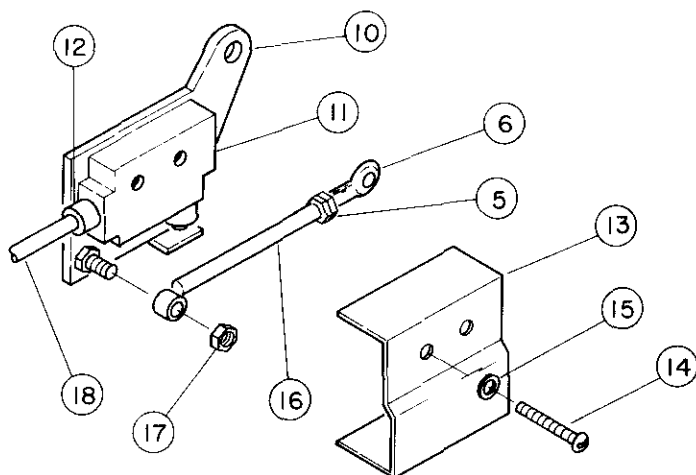
ITEM	QTY.	PART NO.	DESCRIPTION
1	1	360536	BASE PLATE ASSEMBLY
2	1	366045	PEDESTAL WELDMENT ASSEMBLY
3	1	480023	BEARING, ROTATION
4	1	480075	ACTUATOR, HOIST
5	1	480028	ACTUATOR, ROTATION
6	1	480182	VALVE BANK (SEE NOTE 1.)
7	1	480076	MOTOR, HYD. (HOIST)
8	1	480027	MOTOR, HYD. (ROTATION)
9	2	400500	BEARING
10	1	366180	DRUM, HOIST
11	1	480094	KEYSTOCK 3/8" SQ.
12	1	366161	CYLINDER, BOOM UP
13	1	366191	PIN, PEDESTAL/CYLINDER
14	1	480093	PENDANT, ASS'Y
15	1	366070	LOWER BOOM
16	1	366080	CENTER BOOM
17	1	366110	MANUAL BOOM
18	1	366162	CYLINDER, BOOM EXTENSION
19	1	366183	STOP, CENTER BOOM
20	1	366112	STOP, UPPER BOOM
21	1	366201	PAD, BOOM TOP
22	1	366202	PAD, BOOM TOP
23	1	366199	PAD, BOOM
24	1	366187	PAD, RETAINER LOWER
25	1	366185	PAD, BOOM TOP (CENTER BOOM)
26	3	366186	PAD, BOOM (CENTER BOOM)
27	2	366184	RETAINER, EXT. CYL.
28	1	366190	PIN ASS'Y, WITH LANYARD
29	1	366189	PIN, BOOM CYLINDER
30	1	366192	PIN, LOWER BOOM PIVOT
31	1	366193	PIN, EXTENSION CYLINDER
32	2	480029	RETAINING RING
33	1	366198	SHEAVE ASS'Y 3/8 (366197 BEARING ONLY)
34	1	480031	ROPE ASS'Y 3/8"
35	1	360125	PIN, BLOCK
36	1	360124	PIN, HITCH
37	1	360544	COVER, VALVE
38	2	360038	ANGLE INDICATOR
39	3	005500	SCREW, HX. HD. 1/4" - 20 NC X 3/4" LG.
40	3	020200	WASHER, SP. LK. 1/4"
41	2	016300	NUT HX. LK. 1/4 - 20 NC
42	6	002608	SCREW 1/4 - NC X 3/4 SELF TAP
43	1	020901	WASHER FLAT 5/16 SAE
44	2	480024	MOUNT, PENDANT RETAINER
45	1	014304	SCREW, HX. HD. 3/4 X 6" NF GR.5

CONTINUED GENERAL ASSEMBLY - 6006H, AW-366000

ITEM	QTY.	PART NO.	DESCRIPTION
46	1	108600	NUT HX. LK. 3/4" NFCP
47	12	008400	SCREW, HX. HD. 3/8 NC X 3/4" LG.
48	8	007808	SCREW, HX. HD. 5/16 - NF X 1/2" LG.
49	4	005406	SCREW, HX. HD. 1/4 - NF X 1/2 LG.
50	4	008800	SCREW HX. HD. 3/8 - NF X 1" LG.
51	12	021100	WASHER, SP. LK. 3/8"
52	6	021200	WASHER, FLAT 3/8"
53	38	012198	SCREW HX. HD. 5/8 - NC X 1 3/4" GR5
54	38	023902	WASHER, FLAT 5/8", HARDENED
55	4	006205	SCREW, SOC. HD. 5/8 - NC X 1 1/4 GR.8
56	4	011608	SCREW, HX. HD. 1/2 - NC X 2" GR.5
57	1	480019	GASKET, MOTOR
58	2	750413	REDUCER, 1/2 - 14 NPT/ 3/8 - 18 NPTF
59	2	750412	SWIVEL JOINT
60	2	360054	ADAPTER, ST. 1/2 - NPT / 3/4-JIC
61	2	360276	DUST CAP
62	4	008601	SCREW HX. HD. 3/8 - NC X 7/8" GR.5
63	8	021500	WASHER, SP. LK. 1/2
64	4	012197	SCREW, HX. HD. 1/2 - NC X 1 1/2" GR.5
65	1	634000	GUARD, PENDANT
66	2	002615	SCREW, 1/4 - 20 X 3/8 S.T. TYPE F
67	1	800657-009	CONDUCTOR, POWER
68	2	330468	COLLAR, SPLIT-LOCK
69	4	330394	SCREW, HX. HD. 3/8 - NC X 1 1/2"
70	4	017100	NUT, HX. 3/8 - NC CP
71	1	480183	CARTRIDGE, FLOW REGULATOR (SEE NOTE 1)
72	2	REF.	ANGLE, BRACKET, (SEE NOTE 1)
73	4	REF.	SCREW, HX. HD. 3/8 - NC X 7/8" LG. (SEE NOTE 1)
74	1	000109	PLUG, PIPE 3/8 (SEE NOTE 1)
75	8	480184	VALVE, CARTRIDGE (SEE NOTE 1)
76	4	REF.	WASHER FLAT 3/8 (SEE NOTE 1)
77	1	360162	RING, ECCENTRIC
78	1	239000	GREASE ZERK
79	1	366203	TRAVELING BLOCK
80	4	015104	SCREW, HX. HD. 7/8 - NF X 5" LG. GR.5
81	4	022200	LOCKWASHER, 7/8"
82	4	018900	NUT, HX. 7/8 - NF

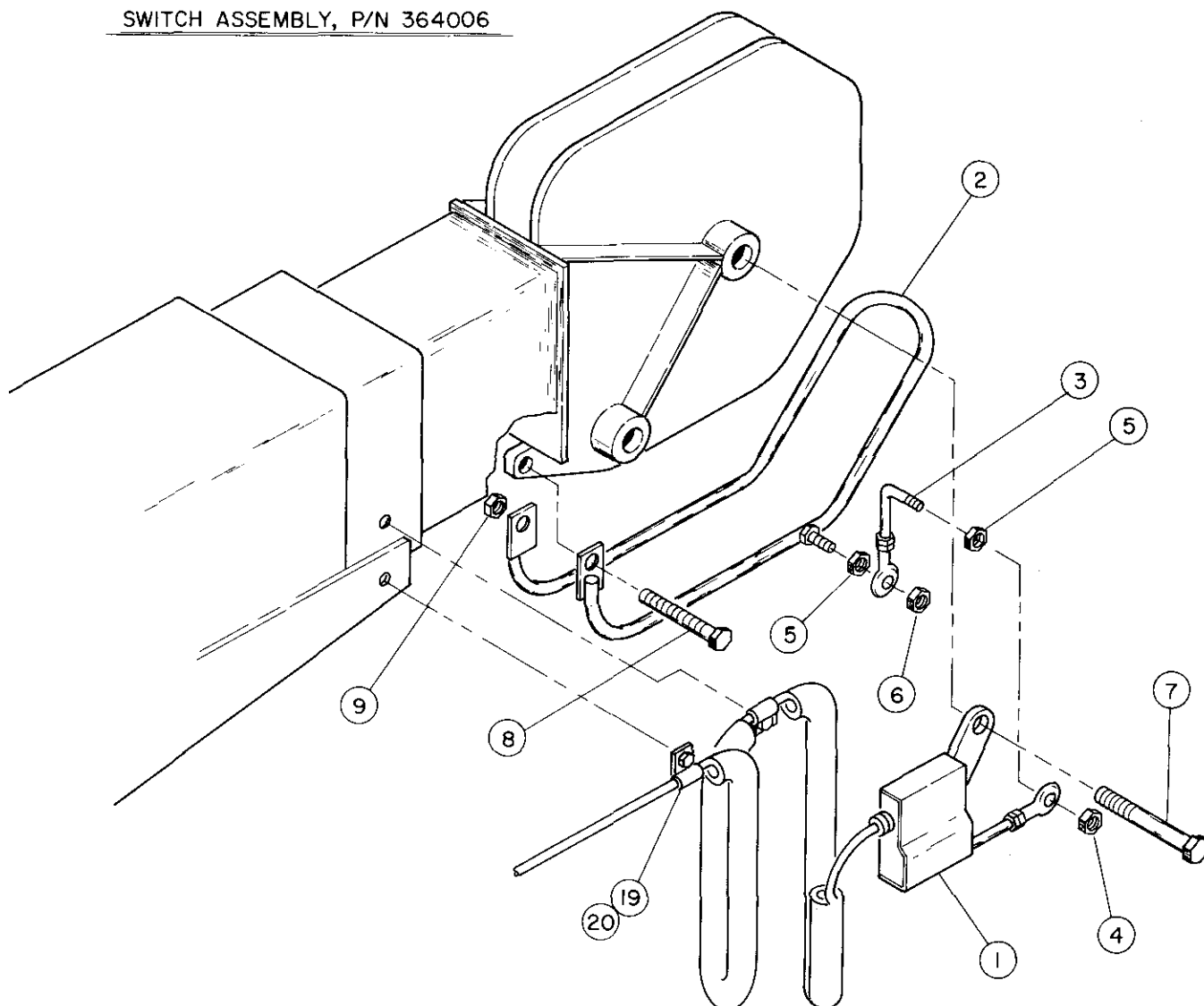
NOTES:

1. ITEMS 6, 71, 72, 73, 74, 75, 76 CAN BE PURCHASED AS AN ASSEMBLY WITH PART NUMBER 480181



SWITCH ASSEMBLY

SWITCH ASSEMBLY, P/N 364006



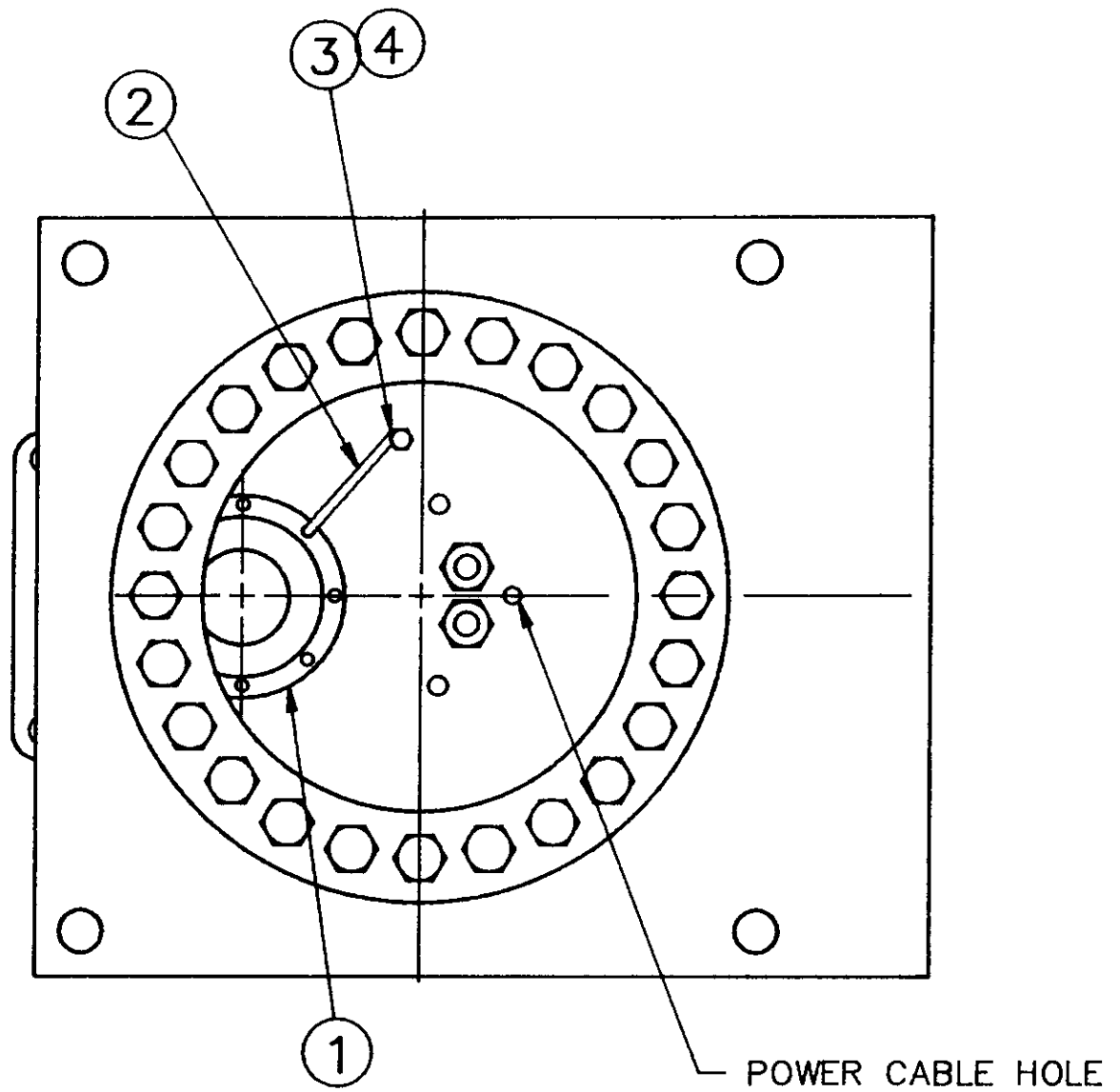
2 - BLOCK ASSEMBLY

2 - BLOCK ASSEMBLY, AW-069

ITEM	QTY.	PART NO.	DESCRIPTION
1	1	364006	2 - BLOCK SWITCH ASSEMBLY
2	1	366116	2 - BLOCK ASSEMBLY
3	1	366196	PIVOT ARM
4	2	016200	NUT, HX. LK. 1/4 NFCP
5	6	016100	NUT, HX. 1/4 NFCP
6	2	363006	BEARING, ROD END
7	1	REF.	SCREW, HX. 3/4 X 6" NF
8	1	007803	SCREW, HX. HD. 5/16 - NC X 3 1/2" LG
9	1	016801	NUT, HX. LK. 5/16 - NC
10	1	363003	MOUNTING PLATE ASS'Y
11	1	646900	SWITCH
12	1	642908	CORD CONNECTOR
13	1	363004	COVER, SWITCH
14	2	002602	SCREW RD. HD. #6 X 1 1/4 NC
15	2	019600	WASHER, SP. LK. #6
16	1	363005	ROD
17	1	017301	NUT, HX. LK. 3/8 NC
18	1	363018	CORD ASSEMBLY
19	7	000115	CLIP
20	7	002608	SCREW HX. HD. 1/4 X 3/4

NOTE:

1. ITEMS 11,12,18 MAY BE PURCHASED AS AN ASSEMBLY WITH PART NO. 363015.



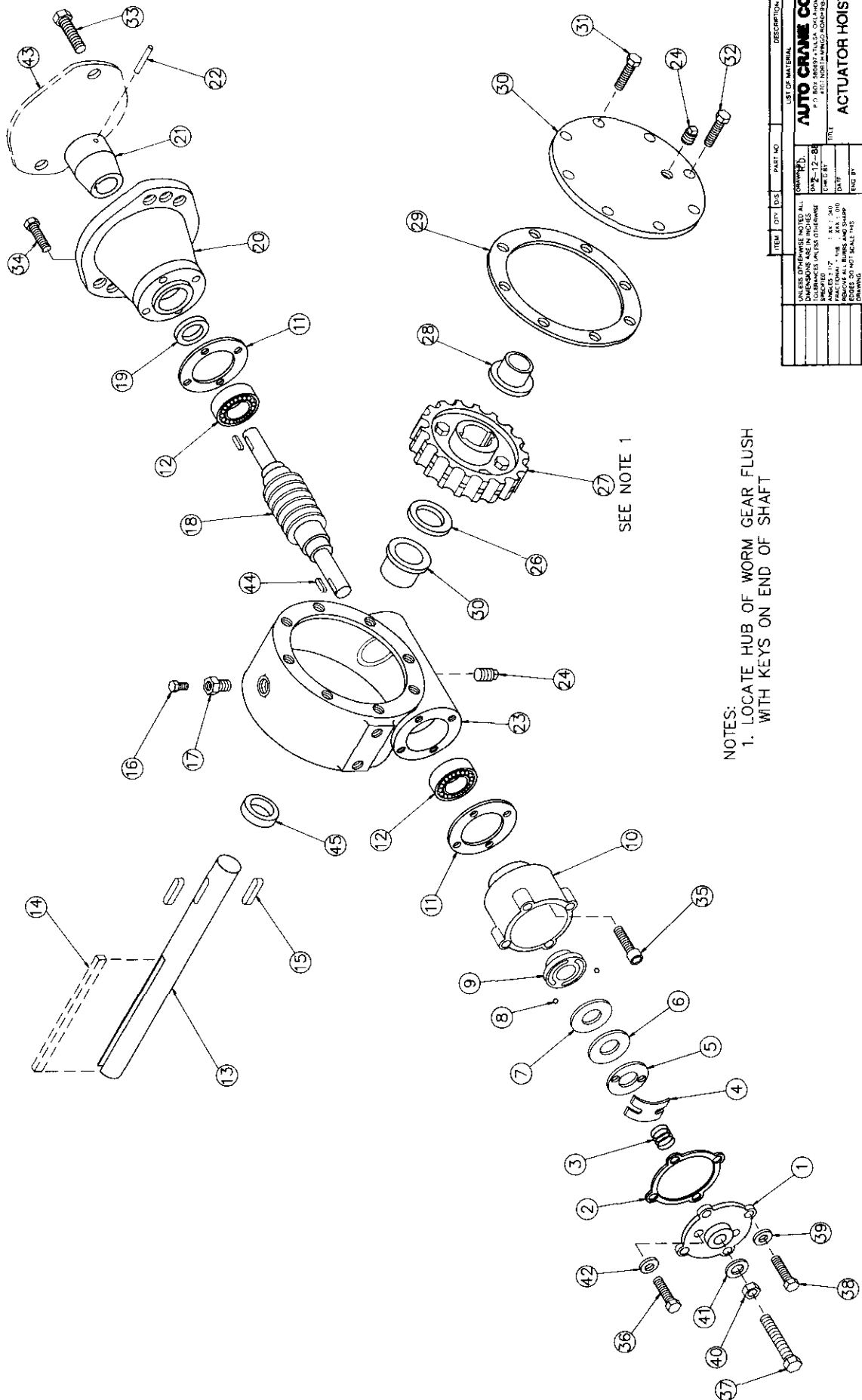
BOTTOM VIEW OF PEDESTAL

AW-067

BOTTOM VIEW OF PEDESTAL, AW-067

ITEM	QTY.	PART NO.	DESCRIPTION
1	1	360162	RING, ECCENTRIC
2	1	360207	RETAINER, ECCENTRIC RING
3	1	007402	SCREW HX. HD. 5/16" - NC X 5/8 GR.5
4	1	020600	WASHER, SP. LK. 5/16"

FIGURE NO.	COMPANY NO.	REVISIONS	DATE	APP.



NOTES:
1. LOCATE HUB OF WORM GEAR FLUSH WITH KEYS ON END OF SHAFT

ITEM	QTY	DES	PART NO	DESCRIPTION
1	1			WORM GEAR
2	1			SHAFT
3	1			KEY
4	1			WORM GEAR
5	1			SHAFT
6	1			KEY
7	1			WORM GEAR
8	1			SHAFT
9	1			KEY
10	1			WORM GEAR
11	1			SHAFT
12	1			KEY
13	1			WORM GEAR
14	1			SHAFT
15	1			KEY
16	1			WORM GEAR
17	1			SHAFT
18	1			KEY
19	1			WORM GEAR
20	1			SHAFT
21	1			KEY
22	1			WORM GEAR
23	1			SHAFT
24	1			KEY
25	1			WORM GEAR
26	1			SHAFT
27	1			KEY
28	1			WORM GEAR
29	1			SHAFT
30	1			KEY
31	1			WORM GEAR
32	1			SHAFT
33	1			KEY
34	1			WORM GEAR
35	1			SHAFT
36	1			KEY
37	1			WORM GEAR
38	1			SHAFT
39	1			KEY
40	1			WORM GEAR
41	1			SHAFT
42	1			KEY
43	1			WORM GEAR
44	1			SHAFT
45	1			KEY
46	1			WORM GEAR
47	1			SHAFT
48	1			KEY
49	1			WORM GEAR
50	1			SHAFT
51	1			KEY
52	1			WORM GEAR
53	1			SHAFT
54	1			KEY
55	1			WORM GEAR
56	1			SHAFT

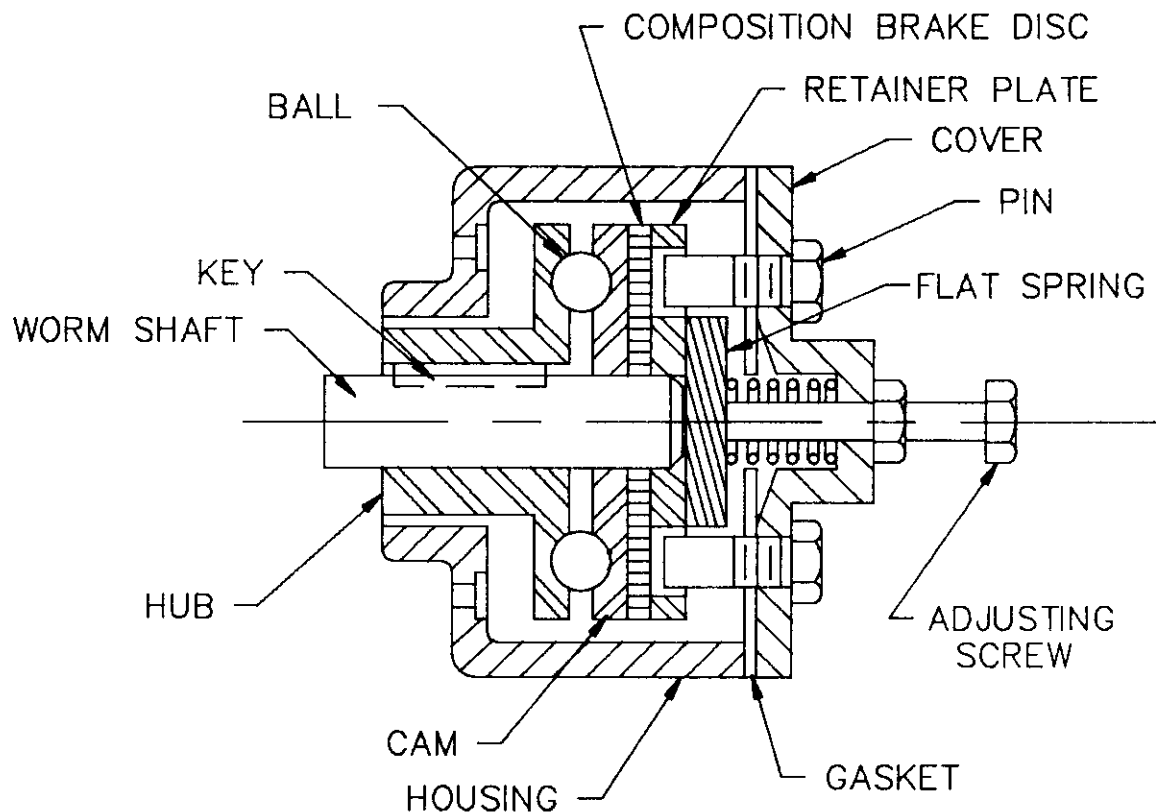
ITEM	QTY	DES	PART NO	DESCRIPTION
1	1			WORM GEAR
2	1			SHAFT
3	1			KEY
4	1			WORM GEAR
5	1			SHAFT
6	1			KEY
7	1			WORM GEAR
8	1			SHAFT
9	1			KEY
10	1			WORM GEAR
11	1			SHAFT
12	1			KEY
13	1			WORM GEAR
14	1			SHAFT
15	1			KEY
16	1			WORM GEAR
17	1			SHAFT
18	1			KEY
19	1			WORM GEAR
20	1			SHAFT
21	1			KEY
22	1			WORM GEAR
23	1			SHAFT
24	1			KEY
25	1			WORM GEAR
26	1			SHAFT
27	1			KEY
28	1			WORM GEAR
29	1			SHAFT
30	1			KEY
31	1			WORM GEAR
32	1			SHAFT
33	1			KEY
34	1			WORM GEAR
35	1			SHAFT
36	1			KEY
37	1			WORM GEAR
38	1			SHAFT
39	1			KEY
40	1			WORM GEAR
41	1			SHAFT
42	1			KEY
43	1			WORM GEAR
44	1			SHAFT
45	1			KEY
46	1			WORM GEAR
47	1			SHAFT
48	1			KEY
49	1			WORM GEAR
50	1			SHAFT
51	1			KEY
52	1			WORM GEAR
53	1			SHAFT
54	1			KEY
55	1			WORM GEAR
56	1			SHAFT

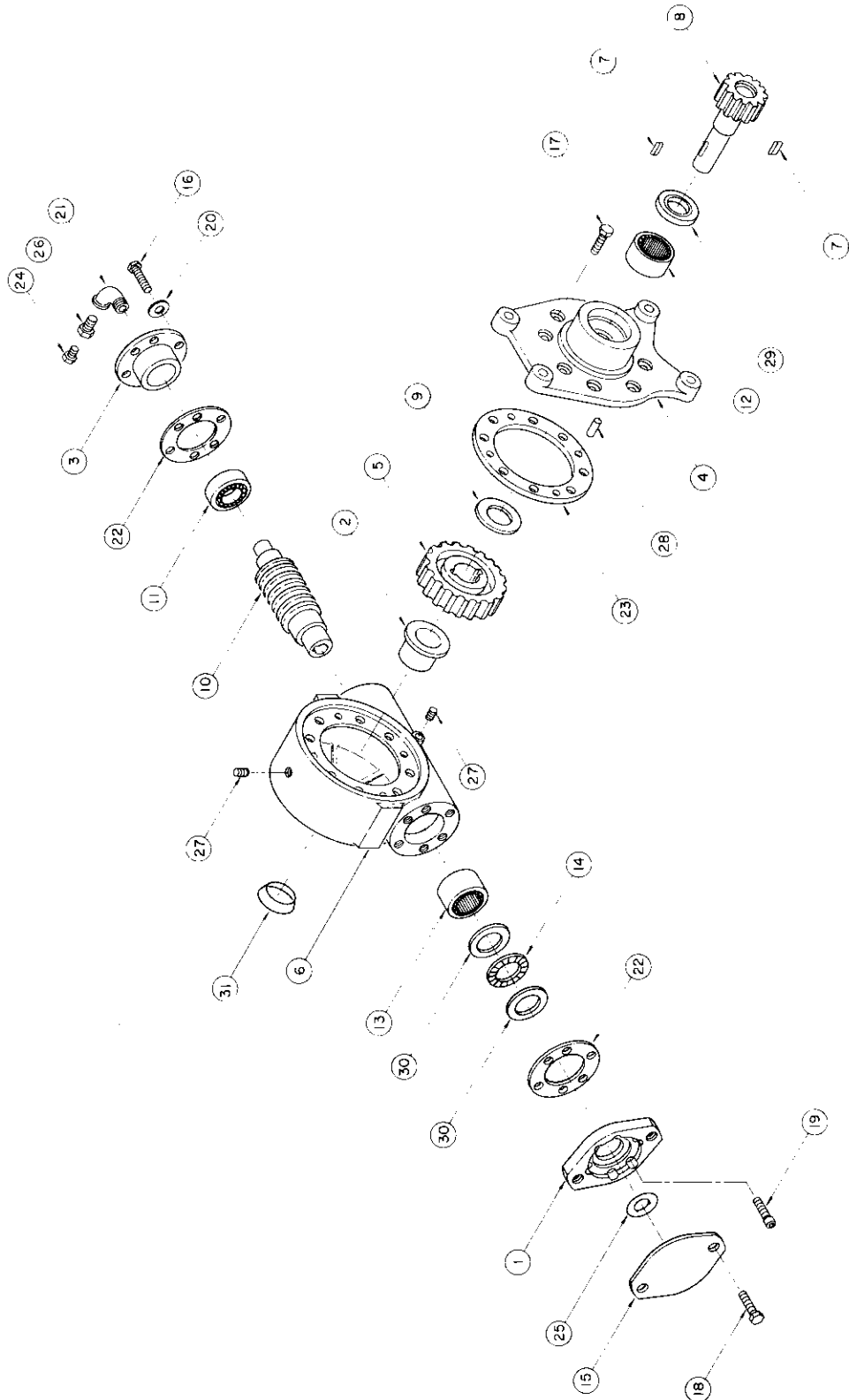
HOIST ACTUATOR - AW-480075

ITEM	QTY.	PART NO.	DESCRIPTION
1	1	360450	COVER, WORM BRAKE
2	1	360359	GASKET
3	1	360368	SPRING
4	1	360367	SPRING, FLAT
5	1	360342	PLATE RETAINER
6	1	360364	PLATE, THRUST
7	1	360331	CAM PLATE
8	2	360345	BALL, BRAKE
9	1	360339	HUB-BRAKE
10	1	360336	HOUSING, BRAKE
11	2	360358	GASKET
12	2	360346	BEARING
13	1	480078	SHAFT-OUTPUT
14	1	480094	KEY 5/16 (REF. FOR DRUM)
15	2	360340	KEY
16	1	360360	FITTING-RELIEF
17	1	360361	REDUCER
18	1	360344	WORM-R.H.
19	1	360365	OIL SEAL
20	1	360330	ADAPTER
21	1	360332	COUPLING
22	1	360363	SPIROL PIN
23	1	360451	HOUSING - GEAR
24	2	360362	PIPE PLUG
25	1	360348	BUSHING
26	1	360369	THRUST WASHER
27	1	360457	GEAR/HUB ASSEMBLY R.H. 46:1
28	1	360347	BUSHING
29	1	360357	GASKET
30	1	360333	COVER
31	7	360350	CAPSCREW 1/4 - 20 NC X 3/4 HX. HD. GR.5
32	1	360452	CAPSCREW 1/4 - 20 NC X 3/4 HX. HD. NYLOK HVY PATCH GR.5
33	2	010202	CAPSCREW 1/2 - 13 NC X 1 HX. HD.
34	4	360352	CAPSCREW 1/4 - 20 NC X 1 3/4 SOC. HD. LOC.-WEL
35	4	360454	CAPSCREW 1/4 - 20 NC X 7/8 SOC. HD. BUTTON GR.5
36	2	360453	CAPSCREW 1/4 - 20 NC X 1 HX. HD. GR.5 ALL THRD. NYLOC HVY. PATCH
37	1	360456	CAPSCREW 3/8 - 16 NC X 1 1/2 HX. HD. ALL THRD. GR.5
38	4	005604	CAPSCREW 1/4 - 20 NC X 1 HX. HD. GR.5
39	4	360354	LOCKWASHER 1/4 MED. SECT. C.P.
40	1	360353	NUT 3/8 - 16 NC HX. JAM
41	1	360371	SEAL
42	2	360455	WASHER - FLAT 1/4 ALUM.
43	1	360349	COVER - HYD. ADAPTER
44	2	360341	KEY
45	1	360366	OIL SEAL
46	1	480289	SEAL AND GASKET KIT

AUTOMATIC SAFETY BRAKE ASSEMBLY (OIL COOLED) HOIST

1. Winch has right hand worm and gear and spools over drum; use number one slots for brake balls.
2. Install brake hub on winch worm with key.
3. Assemble balls in cam using hard grease to hold balls in place.
4. Install cam and balls, fitting balls in slots on hub.
5. Install brake disc.
6. Install retainer.
7. Install flat spring in brake housing cover (arch down).
8. Install brake housing cover, fitting pins in slots on spring and holes in retainer.
9. Test brake by shifting winch to UP then DOWN to see if brake is working in proper rotation. If not, remove brake and locate brake balls in opposite set of slots.
10. Adjust to suit by tightening or loosening screw on outside of cover. When proper adjustment is obtained, secure screw with jam nut.





DESCRIPTION			
ITEM	QTY	DIS	PART NO
LIST OF MATERIAL			
UNLESS OTHERWISE NOTED ALL DIMENSIONS ARE IN INCHES			
TOLERANCES UNLESS OTHERWISE SPECIFIED			
FRACTIONS 1/16 1/8 3/16 1/4 5/16 3/8 7/8 1 1 1/2 2 3 4 6 8 10 12 14 16 18 20 22 24 26 28 30 32 34 36 38 40 42 44 46 48 50 52 54 56 58 60 62 64 66 68 70 72 74 76 78 80 82 84 86 88 90 92 94 96 98 100			
DECIMALS .0005 .001 .002 .003 .004 .005 .006 .007 .008 .009 .010 .015 .020 .025 .030 .035 .040 .045 .050 .055 .060 .065 .070 .075 .080 .085 .090 .095 .100 .105 .110 .115 .120 .125 .130 .135 .140 .145 .150 .155 .160 .165 .170 .175 .180 .185 .190 .195 .200 .205 .210 .215 .220 .225 .230 .235 .240 .245 .250 .255 .260 .265 .270 .275 .280 .285 .290 .295 .300 .305 .310 .315 .320 .325 .330 .335 .340 .345 .350 .355 .360 .365 .370 .375 .380 .385 .390 .395 .400 .405 .410 .415 .420 .425 .430 .435 .440 .445 .450 .455 .460 .465 .470 .475 .480 .485 .490 .495 .500 .505 .510 .515 .520 .525 .530 .535 .540 .545 .550 .555 .560 .565 .570 .575 .580 .585 .590 .595 .600 .605 .610 .615 .620 .625 .630 .635 .640 .645 .650 .655 .660 .665 .670 .675 .680 .685 .690 .695 .700 .705 .710 .715 .720 .725 .730 .735 .740 .745 .750 .755 .760 .765 .770 .775 .780 .785 .790 .795 .800 .805 .810 .815 .820 .825 .830 .835 .840 .845 .850 .855 .860 .865 .870 .875 .880 .885 .890 .895 .900 .905 .910 .915 .920 .925 .930 .935 .940 .945 .950 .955 .960 .965 .970 .975 .980 .985 .990 .995 1.000			
ANGLES 15 30 45 60 75 90 105 120 135 150 165 180 195 210 225 240 255 270 285 300 315 330 345 360			
SURFACE FINISHES UNLESS OTHERWISE SPECIFIED			
MATERIALS UNLESS OTHERWISE SPECIFIED			
FINISHES UNLESS OTHERWISE SPECIFIED			
WEIGHTS UNLESS OTHERWISE SPECIFIED			
NEXT ASSY			
DRAWING NO. AW-480028			
SHEET 1 OF 1			

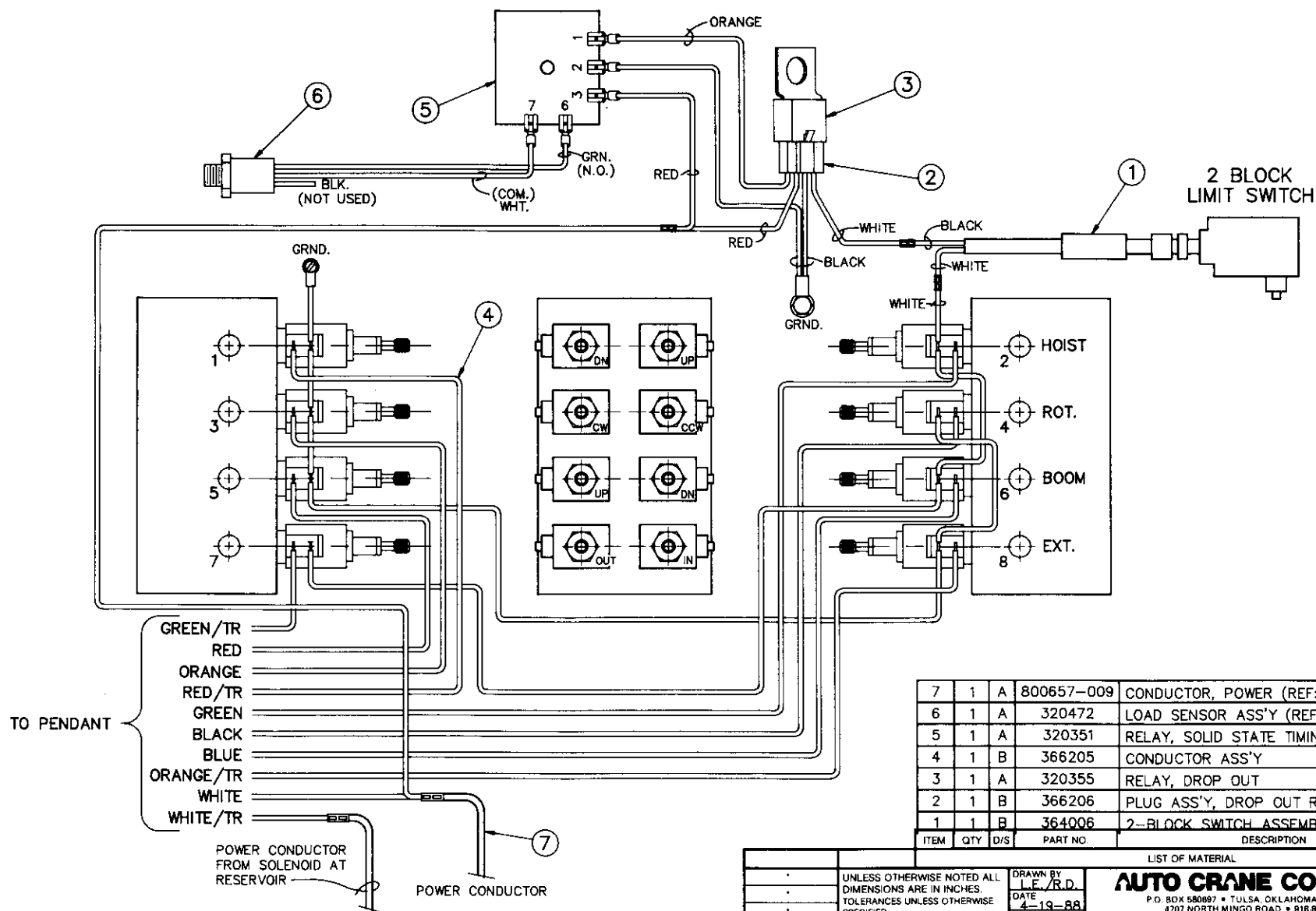
GEAR BOX, ROTATION AW-480028

ITEM	QTY.	PART NO.	DESCRIPTION
1	1	480240	ADAPTER
2	1	480241	BUSHING
3	1	480242	CAP, BEARING
4	1	480243	COVER
5	1	480244	GEAR - R.H.
6	1	480237	HOUSING-GEAR
7	2	480246	KEY
8	1	480247	SHAFT-OUTPUT
9	1	480248	WASHER-THRUST
10	1	480249	WORM, R.H.
11	1	480251	BEARING-BALL
12	1	480252	BEARING-NEEDLE
13	1	480253	BEARING-NEEDLE
14	1	480254	BEARING-THRUST
15	1	480255	COVER
16	6	007400	CAPSCREW, 5/16 - 18 NC X 1" LG. HX. HD.
17	8	480238	CAPSCREW, 5/16 - 18 NC X 1 1/4 LG. HX. NYLOC HVY PATCH
18	2	011508	CAPSCREW, 1/2 - 13 NC X 3/4 LG. HX. HD.
19	6	480256	CAPSCREW, 5/16 - 18 NC X 1" LG. SOC. HD. LOC.-WEL
20	6	480258	LOCKWASHER, 5/16 MED. SECT. C.P.
21	1	480259	ELBOW, 90°
22	2	480260	GASKET
23	1	480250	GASKET
24	1	480262	FITTING, RELIEF
25	1	480239	O-RING
26	1	480263	REDUCER
27	2	480264	PLUG, PIPE
28	4	480265	PIN-DOWEL
29	1	480266	SEAL-OIL
30	2	480268	WASHER-THRUST
31	1	480269	PLUG, EXPANSION

TRAVELING BLOCK ASSEMBLY - AW-366203

ITEM	QTY.	PART NO.	DESCRIPTION
1	1	480130	SHEAVE ASSEMBLY
2	1	200197	HOOK, SWIVEL
3	2	360601	BLOCK, SIDE PLATE
4	1	240237	SPACER, BUSHING 1" O.D.
5	1	006801	SCREW, HX. HD. 1/2 - 20 X 4" LG.
6	1	017800	NUT, HX. LK. 1/2 - 20
7	2	360124	PIN, HITCH
8	2	360605	PIN, BLOCK

5-1.0.0



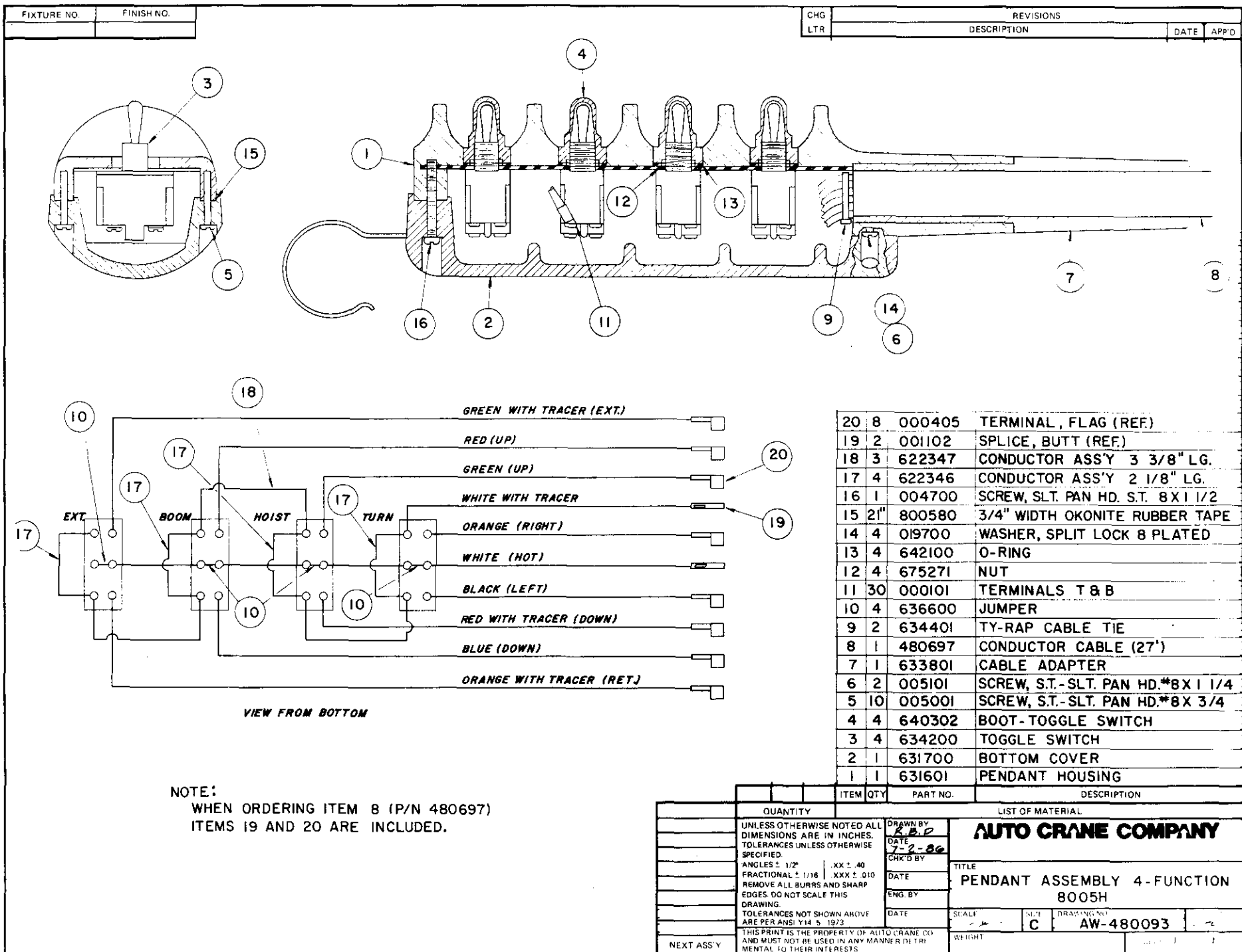
7	1	A	800657-009	CONDUCTOR, POWER (REF:)
6	1	A	320472	LOAD SENSOR ASS'Y (REF:)
5	1	A	320351	RELAY, SOLID STATE TIMING
4	1	B	366205	CONDUCTOR ASS'Y
3	1	A	320355	RELAY, DROP OUT
2	1	B	366206	PLUG ASS'Y, DROP OUT RELAY
1	1	B	364006	2-BLOCK SWITCH ASSEMBLY
ITEM	QTY	D/S	PART NO.	DESCRIPTION

LIST OF MATERIAL

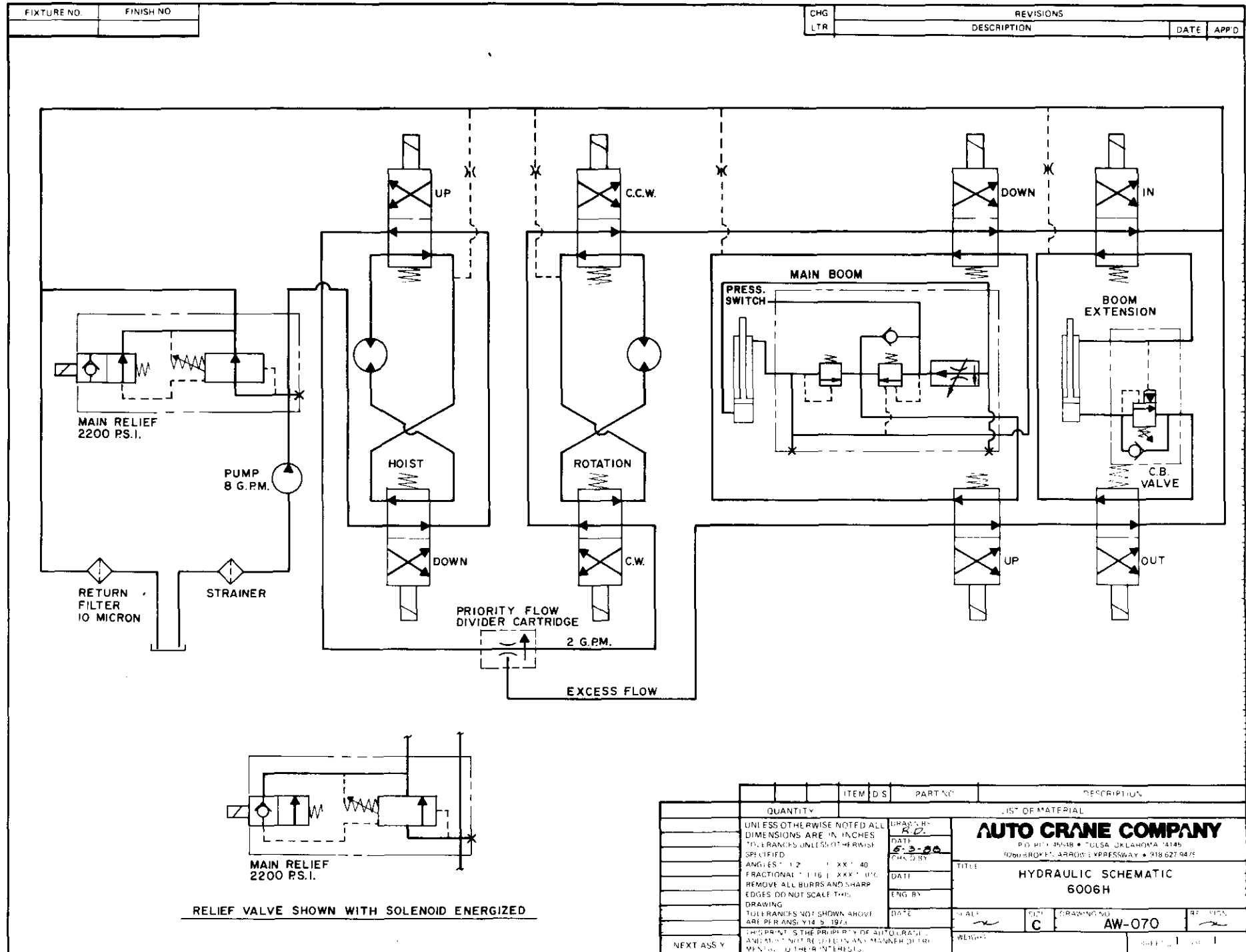
UNLESS OTHERWISE NOTED ALL DIMENSIONS ARE IN INCHES. TOLERANCES UNLESS OTHERWISE SPECIFIED:		DRAWN BY L.E./R.D.	
ANGLES $\pm 1/2^\circ$		DATE 4-19-88	
FRACTIONAL $\pm 1/16$		CHK'D BY	
XX $\pm .040$		DATE	
REMOVE ALL BURRS AND SHARP EDGES. DO NOT SCALE THIS DRAWING.		ENG. BY	
TOLERANCES NOT SHOWN ABOVE ARE PER ANSI Y14.5-1973		DATE	
THIS PRINT IS THE PROPERTY OF AUTO CRANE CO AND MUST NOT BE USED IN ANY MANNER DETRIMENTAL TO THEIR INTERESTS.		NEXT ASSY	
AUTO CRANE COMPANY P.O. BOX 580897 • TULSA, OKLAHOMA 74158-0897 4707 NORTH MINGO ROAD • 918 836-0463			
TITLE ELECTRICAL ASSEMBLY 6006H			
SCALE	SIZE	DRAWING NO.	REVISION
	C	AW-366200	A
WEIGHT			SHEET 1 OF 1

CHG	DESCRIPTION	DATE	APP'D
LTR	REVISIONS		

5-2.0.0



6-1.0.0



ITEM	D.S.	PART NO.	DESCRIPTION
QUANTITY			
LIST OF MATERIAL			
UNLESS OTHERWISE NOTED ALL DIMENSIONS ARE IN INCHES			
TOLERANCES UNLESS OTHERWISE SPECIFIED			
ANGLES: 1/2" 1/4" 1/8" 1/16" 1/32" 1/64"			
FRACTIONAL: 1/16" 1/8" 1/4" 1/2" 3/4" 1" 1 1/2" 2" 3" 4" 6" 8" 10" 12"			
REMOVE ALL BURRS AND SHARP EDGES DO NOT SCALE THIS DRAWING			
TOLERANCES NOT SHOWN ABOVE ARE PER ANSI Y14.5-1973			
THIS PRINT IS THE PROPERTY OF AUTO CRANE COMPANY AND IS NOT TO BE REPRODUCED IN ANY MANNER WITHOUT WRITTEN CONSENT OF THE COMPANY			
NEXT ASSY		WEIGHT	

AUTO CRANE COMPANY

P.O. BOX 3008 • TULSA, OKLAHOMA 74105

4060 BROOKLYN AVE. • TULSA, OKLAHOMA 74105

**HYDRAULIC SCHEMATIC
6006H**

SCALE: **C** DRAWING NO: **AW-070**

HYDRAULICS--8006H (AW-075)

VENTED RELIEF VALVE SETTING

Ref: see reservoir assembly AW-366160

1. The crane must receive 8 GPM and 2200 PSI. To assure proper flow, install an in-line flow meter between the crane and the reservoir in the return hose, or confirm pump (480018) speed at 1000 RPM. Proper pressure setting can be achieved by removing the pipe plug 000209 on relief valve (see page 6-8.0.0) and installing a 0-2500 PSI pressure gage. **WARNING**, this should be done with the PTO disengaged.
2. The boom can now be elevated to 75° (full cylinder extension) and the pressure noted. If the gage reading is not 2200 PSI, adjust the pressure relief (part no. 366211 of 366212 assembly) until the correct pressure is registered. Verify this setting by booming down to 60°, then booming up to full cylinder extension and the pressure checked for 2200 PSI.
3. Disengage PTO. Remove gage and re-install the plug. The crane is now ready for operation.

COUNTERBALANCE VALVE ADJUSTMENT

Ref: see hydraulic assembly, AW-366160 (page 6-4.0.0)

1. With PTO disengaged and BOOM PROPERLY SUPPORTED, remove the "X" port plug located on the left side of the boom cylinder hydraulic block, and install a pressure gage (0-2500 PSIG).
2. engage PTO and maintain proper engine speed to supply 8 GPM at 2200 PSI to the crane. With no load, boom up to approximately 45° and loosen the 5mm lock nut on the flow control valve (see diagram below). With a 4mm allen wrench, turn the adjusting screw counter clockwise (CCW) two full turns to open the valve fully.

Boom up to 75°, boom down and note pressure reading. The pressure reading should be 1200-1300 PSIG. If not, the counterbalance valve requires adjustment.

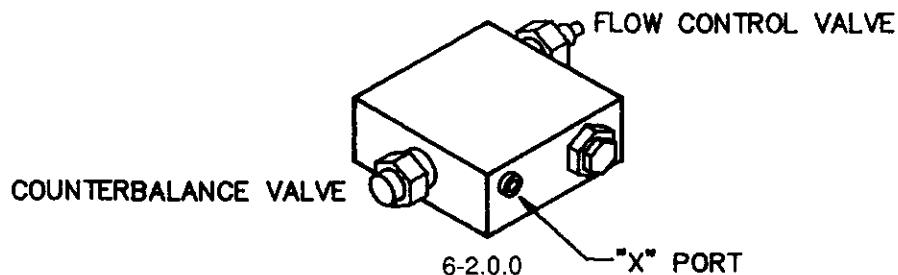
A. To increase CB valve setting, loosen the 17mm locknut and with a 5mm allen wrench turn the adjusting screw clockwise (CW).

B. To reduce the CB valve setting, loosen the 17mm locknut and with a 5mm allen wrench turn the adjusting screw counter clockwise (CCW).

After adjusting the CB valve, turn the flow control valve adjusting screw clockwise (CW) until the boom down pressure reading is 1,450 PSIG (internal relief pressure setting non-adjustable). Continue turning clockwise to achieve desired boom down speed. If the speed is too fast, a slight bounce may occur during boom down. Tighten both flow control valve and counterbalance valve locknuts.

3. Disengage PTO. Remove gage and re-install the plug. The crane is now ready for operation.

NOTE: DANGER- Adjust valves with boom stationary. Failure to do so may result in personal injury!



6006H SERIES HYDRAULICS TROUBLESHOOTING

CAUTION: Never check for hydraulic leaks by feeling around hoses, fittings, or any other components. High pressure oil can be injected through the skin causing severe injury, or death.

The hydraulic system of the 6006H power version is electrically operated and requires a minimum of 12v for satisfactory performance. The hydraulic pump is bi-rotational with a pressure relief setting of 2200 p.s.i. (REF). Standard pump speed is 1000 R.P.M. (Ref. Pump P/N 480018). This pump is for direct flange mounting only, not to be shaft driven.

PROBLEM

SOLUTION

FLOW PRESENT BUT FUNCTION WILL NOT WORK

Remove valve cover to gain access to the manual override on the end of the valve cartridge. With pump operating, operate pendant switch to supply flow to the crane and twist/pull the manual override knob out. If function does not operate, check pump pressure and relief valve setting. If the function does operate, check for loose wire, low voltage or bad ground. If the above items check out all right, replace valve cartridge. If the problem is traced to no voltage at the valve cartridge, remove pendant and with the switch engaged check for an open circuit with an ohmmeter. If the circuit is open, check for broken wiring or bad switch.

HYDRAULIC "CHATTER"

When a hydraulic function is engaged and causes the crane to "chatter", check for loose wire, low voltage at valve cartridge, low pump pressure, or air in the system.

NO FLOW OR LIMITED FLOW TO CRANE

Check for adequate oil supply in reservoir. Check operation of vented relief valve by pressing manual over-ride on solenoid of relief valve while operating crane. If crane functions, check for 12V at solenoid when operating crane. If voltage present-check solenoid on relief for continuity and ground. If low flow condition continues to exist when relief valve vent manual over ride is operated, remove relief valve cartridge and check for dirt. Other possible causes for a low flow condition are:

1. Engine speed too slow.
2. Blocked pressure hose from pump. This condition can be identified by excessive lugging of engine and rapid overheating of oil.
3. Collapsed or blocked suction hose to pump. This condition is usually identified by pump cavitation noise.
4. Bad pumps - a bad pump will usually have some flow but the flow will drop off rapidly as pressure increases. This condition will cause overheating of the system.

Progressively disconnect fittings at test points to verify existence of flow. Rule: Pumps pump flow only, systems and their loads-resistances produce pressure, up to that limit imposed by lowest pressure limiting exposed to pressure.

NO PRESSURE OR TOO LOW PRESSURE

Check to maintain adequate oil in reservoir (approx. 8 gal.) by means of sight gauge. Make sure pressure gauge is functioning correctly. Possible relief hung open. Check for excessive leakage and correct. Check to insure that pressure limit switch is correctly set.

Progressively test circuit points to determine pressure existence.

TOO HIGH FLOW

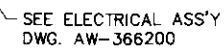
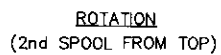
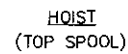
Make sure pump size is correct and pump speed is not too fast (1000R.P.M.). Check or replace flow control. Check components for flow displacements.

TOO HIGH PRESSURE

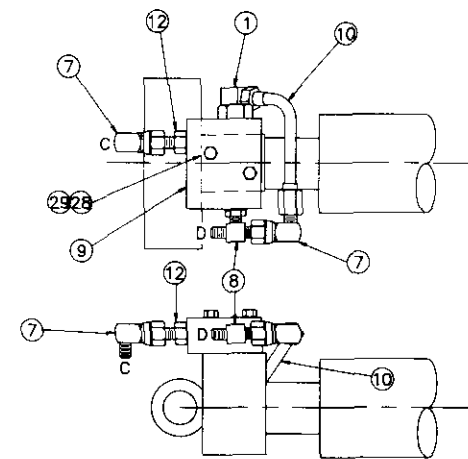
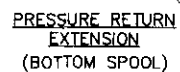
Make sure pressure relief valve is correctly set.

CAUTION

The Auto Crane 6006H Series cranes are manufactured with a standard overload protection system to prevent structural damage to the crane. When the crane load rating is exceeded, main boom down, extend out, and hoist up will not function. These operations cannot be used again until the load on the crane is reduced. Also, the main boom elevation will be limited in its operation as the crane becomes overload. Attempting to raise the main boom with a load exceeding the crane rating will open the main relief valve resulting in no boom movement. This problem can be resolved by moving the load closer to the crane pedestal.



BOOM UP
(3rd SPOOL FROM TOP)

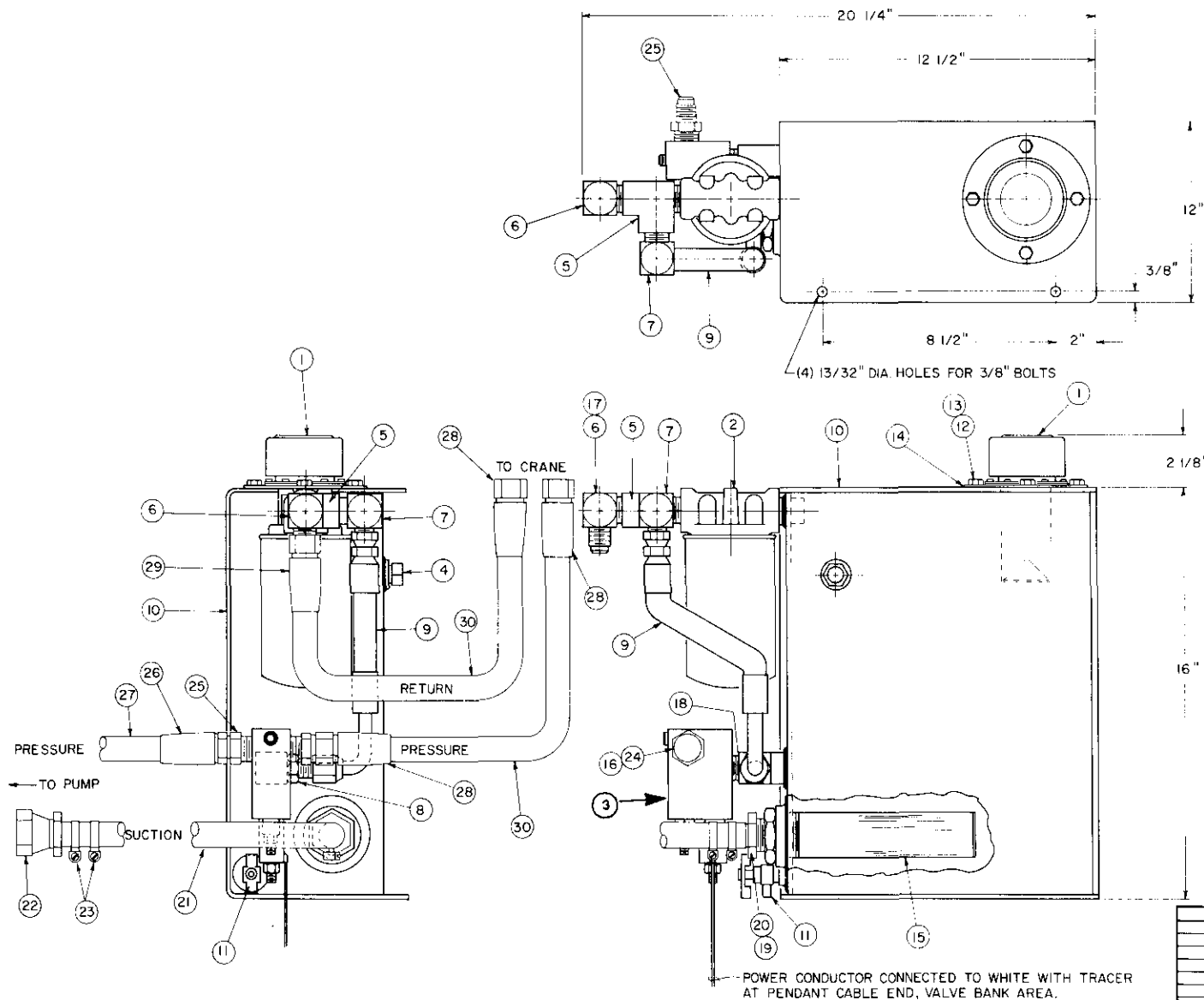


DETAIL "A"

ITEM		QTY	U.S.	PART NO	DESCRIPTION
					LIST OF MATERIAL
UNLESS OTHERWISE NOTED ALL DIMENSIONS ARE IN INCHES TO BRACKETS UNLESS OTHERWISE SPECIFIED ANGLES 1/2" x 1/2" x 6" FUNCTIONAL 1" x 1/2" x 6" DO REMOVE ALL BURRS AND SHARP EDGES DO NOT SCALE THIS DRAWING TOLERANCES NOT SHOWN ARE ARE PER AND 1/4" X 1/2"					DRAWING NO 2-88 TITLE HYDRAULIC ASSY 6006H
THIS IS THE PROPERTY OF AUTO CRANE CO AND MUST NOT BE LOANED, REPRODUCED OR COPIED IN ANY MANNER SETTING					710 N. CHILANBY RD 410 NORTH MINDO ROAD • 118 ZONE 0633
NEXT ASY	DATE	SCALE	REV	DRAWING NO	REVISION
			0	AW-36160	
				SHEET	OF

HYDRAULIC ASSEMBLY, AW-366160

ITEM	QTY.	PART NO.	DESCRIPTION
1	7	200892	ELL, 90° 3/8 - 18 NPT, 9/16 - 18 JIC
2	2	202759	ELL, 90° 1/2 - NPT, 9/16 - JIC
3	2	360043	ELL, 90° 1/2 - 14 NPT, 3/4 - JIC
4	2	360044	ELL, 90° 3/8 - 18 NPT, 3/4 - 16 JIC
5	1	480190	ELL, 90° 3/8 - 18 NPT, 3/4 - 16 JIC (LONG)
6	1	480213	ELL, 90° 3/8 NPT, 3/4 JIC (MED. LONG)
7	2	480194	ELL, 90° 9/16 - 18 JIC SWIVEL, 9/16 - 18
8	1	241168	TEE, 9/16 O-RING, 9/16 JIC RUN
9	1	330412	COUNTER BALANCE VALVE
10	1	480212	TUBE ASSEMBLY (EXT. CYL.)
11	1	480211	TUBE ASSEMBLY (PRESSURE)
12	3	200876	ADAPTER, 9/16 - 18 O-RING, 9/16 - 18 JIC
13	1	360572	HOSE ASSEMBLY
14	1	360573	HOSE ASSEMBLY
15	1	480202	HOSE ASSEMBLY
16	1	480203	HOSE ASSEMBLY
17	2	480204	HOSE ASSEMBLY
18	1	360578	HOSE ASSEMBLY
19	1	360579	HOSE ASSEMBLY
20	2	480208	HOSE ASSEMBLY
21	2	480195	ELL, 45° 9/16 O-RING, 9/16 - JIC
22	1	366164	COUNTER BALANCE VALVE
23	1	366163	TUBE ASSEMBLY
24	2	360054	ADAPTER, STR. 1/2 - 14 NPT, 3/4 - 16 JIC
25	2	750413	REDUCER, 1/2 - 14 NPT, 3/8 NPTF
26	1	750412	SWIVEL JOINT -8
27	4	005612	SCREW, 1/4 - 20 X 3/4 SOC. HD.
28	2	020200	1/4" LK. WASHER
29	2	005810	SCREW, 1/4 NC X 1 3/4 HX. HD.
30	1	320472	LOAD SENSOR



DESCRIPTION	DATE	APP'D
REVISIONS		

ITEM	QTY	D/S	PART NO	DESCRIPTION
LIST OF MATERIAL				
UNLESS OTHERWISE NOTED ALL DIMENSIONS ARE IN INCHES				
TOLERANCES UNLESS OTHERWISE SPECIFIED				
ANGLES - 1/2" - 1/4" - 1/8" - 1/16" - 1/32" - 1/64" - 1/128" - 1/256" - 1/512" - 1/1024" - 1/2048" - 1/4096" - 1/8192" - 1/16384" - 1/32768" - 1/65536" - 1/131072" - 1/262144" - 1/524288" - 1/1048576" - 1/2097152" - 1/4194304" - 1/8388608" - 1/16777216" - 1/33554432" - 1/67108864" - 1/134217728" - 1/268435456" - 1/536870912" - 1/1073741824" - 1/2147483648" - 1/4294967296" - 1/8589934592" - 1/17179869184" - 1/34359738368" - 1/68719476736" - 1/137438953472" - 1/274877906944" - 1/549755813888" - 1/1099511627776" - 1/2199023255552" - 1/4398046511104" - 1/8796093022208" - 1/17592186044416" - 1/35184372088832" - 1/70368744177664" - 1/140737488355328" - 1/281474976710656" - 1/562949953421312" - 1/1125899906842624" - 1/2251799813685248" - 1/4503599627370496" - 1/9007199254740992" - 1/18014398509481984" - 1/36028797018963968" - 1/72057594037927936" - 1/144115188075855872" - 1/288230376151711744" - 1/576460752303423488" - 1/1152921504606846976" - 1/2305843009213693952" - 1/4611686018427387904" - 1/9223372036854775808" - 1/18446744073709551616" - 1/36893488147419103232" - 1/73786976294838206464" - 1/147573952589676412928" - 1/295147905179352825856" - 1/590295810358705651712" - 1/1180591620717411303424" - 1/2361183241434822606848" - 1/4722366482869645213696" - 1/9444732965739290427392" - 1/18889465931478580854784" - 1/37778931862957161709568" - 1/75557863725914323419136" - 1/151115727451828646838272" - 1/302231454903657293676544" - 1/604462909807314587353088" - 1/1208925819614629174706176" - 1/2417851639229258349412352" - 1/4835703278458516698824704" - 1/9671406556917033397649408" - 1/19342813113834066795298816" - 1/38685626227668133590597632" - 1/77371252455336267181195264" - 1/154742504910672534362390528" - 1/309485009821345068724781056" - 1/618970019642690137449562112" - 1/1237940039285380274899124224" - 1/2475880078570760549798248448" - 1/4951760157141521099596496896" - 1/9903520314283042199192993792" - 1/19807040628566084398385987584" - 1/39614081257132168796771975168" - 1/79228162514264337593543950336" - 1/158456325028528675187087900672" - 1/316912650057057350374175801344" - 1/633825300114114700748351602688" - 1/1267650600228229401496703205376" - 1/2535301200456458802993406410752" - 1/5070602400912917605986812821504" - 1/10141204801825835211973625643008" - 1/20282409603651670423947251286016" - 1/40564819207303340847894502572032" - 1/81129638414606681695789005144064" - 1/162259276829213363391578010288128" - 1/324518553658426726783156020576256" - 1/649037107316853453566312041152512" - 1/1298074214633706907132624082305024" - 1/2596148429267413814265248164610048" - 1/5192296858534827628530496329220096" - 1/10384593717069655257060992658440192" - 1/20769187434139310514121985316880384" - 1/41538374868278621028243970633760768" - 1/83076749736557242056487941267521536" - 1/166153499473114484112975882535043072" - 1/332306998946228968225951765070086144" - 1/664613997892457936451903530140172288" - 1/1329227995784915872903807060280344576" - 1/2658455991569831745807614120560689152" - 1/5316911983139663491615228241121378304" - 1/10633823966279326983230456482242756608" - 1/21267647932558653966460912964485513216" - 1/42535295865117307932921825928971026432" - 1/85070591730234615865843651857942052864" - 1/170141183460469231731687303715884105728" - 1/340282366920938463463374607431768211456" - 1/680564733841876926926749214863536422912" - 1/1361129467683753853853498429727072845824" - 1/2722258935367507707706996859454145691648" - 1/5444517870735015415413993718908291383296" - 1/10889035741470030830827987437816582766592" - 1/21778071482940061661655974875633165533184" - 1/43556142965880123323311949751266331066368" - 1/87112285931760246646623899502532662132736" - 1/174224571863520493293247799005065244265472" - 1/348449143727040986586495598010130488530944" - 1/696898287454081973172991196020260977061888" - 1/1393796574908163946345982392040521954123776" - 1/2787593149816327892691964784081043908247552" - 1/5575186299632655785383929568162087816495104" - 1/11150372599265311570767859136324175632990208" - 1/22300745198530623141535718272648351265980416" - 1/44601490397061246283071436545296702531960832" - 1/89202980794122492566142873090593405063921664" - 1/178405961588244985132285746181186810127843328" - 1/356811923176489970264571492362373620255686656" - 1/713623846352979940529142984724747240511373312" - 1/1427247692705959881058285969449494481022746624" - 1/2854495385411919762116571938898988962045493248" - 1/5708990770823839524233143877797977924090986496" - 1/11417981541647679048466287755595955848181972992" - 1/22835963083295358096932575511191911696363945984" - 1/45671926166590716193865151022383823392727891968" - 1/91343852333181432387730302044767646785455783936" - 1/182687704666362864775460604089535293570911567872" - 1/365375409332725729550921208179070587141823135744" - 1/730750818665451459101842416358141174283646271488" - 1/1461501637330902918203684832716282348567292542976" - 1/2923003274661805836407369665432564697134585085952" - 1/5846006549323611672814739330865129394269170171904" - 1/11692013098647223345629478661730258788538340343808" - 1/23384026197294446691258957323460517577076680687616" - 1/46768052394588893382517914646921035154153361375232" - 1/93536104789177786765035829293842070308306722750464" - 1/187072209578355573530071658587684140616613445500928" - 1/374144419156711147060143317175368281233226891001856" - 1/748288838313422294120286634350736562466453782003712" - 1/1496577676626844588240573268701473124932907564007424" - 1/2993155353253689176481146537402946249865815128014848" - 1/5986310706507378352962293074805892499731630256029696" - 1/11972621413014756705924586149611784999463260512059392" - 1/23945242826029513411849172299223569998926521024118784" - 1/47890485652059026823698344598447139997853042048237568" - 1/95780971304118053647396689196894279995706084096475136" - 1/191561942608236107294793378393788559991412168192950272" - 1/383123885216472214589586756787577119982824336385900544" - 1/766247770432944429179173513575154239965648672771801088" - 1/1532495540865888858358347027150308479931297345543602176" - 1/3064991081731777716716694054300616959862594691087204352" - 1/6129982163463555433433388108601233919725189382174408704" - 1/1225996432692711086686677621720246783945037876434881728" - 1/2451992865385422173373355243440493567890075752869763456" - 1/4903985730770844346746710486880987135780151505739526912" - 1/9807971461541688693493420973761974271560303011479053824" - 1/1961594292308337738698684194752394854312060602295806752" - 1/3923188584616675477397368389504789708624121204591613504" - 1/7846377169233350954794736779009579417248242409183227008" - 1/15692754338466701909589473558019158834496484818366454016" - 1/31385508676933403819178947116038317668992969636732908032" - 1/62771017353866807638357894232076635337985939273465816064" - 1/125542034707733615276715788464153270675971878546931632128" - 1/251084069415467230553431576928306541351943757093863264256" - 1/502168138830934461106863153856613082703887514187726528512" - 1/1004336277661868922213726307713226165407775028375453056" - 1/2008672555323737844427452615426452330815550056750906112" - 1/4017345110647475688854905230852904661631100113501812224" - 1/8034690221294951377709810461705809323262200227003624448" - 1/1606938044258990275541962092341161864652440045400724896" - 1/3213876088517980551083924184682323729304880090801449792" - 1/6427752177035961102167848369364647458609760181602899584" - 1/12855504354071922204335696738729294917219520363205799168" - 1/25711008708143844408671393477458589834439040726411598336" - 1/51422017416287688817342786954917179668878081452823196672" - 1/102844034832575377634685573909834359337756162905646393344" - 1/205688069665150755269371147819668718675512325811292786688" - 1/411376139330301510538742295639337437351024651622585573376" - 1/822752278660603021077484591278674874702049303245171146752" - 1/1645504557321206042154969182557349749404098606490342293504" - 1/3291009114642412084309938365114699498808197212980684587008" - 1/6582018229284824168619876730229398997616394425961369174016" - 1/13164036458569648337239753460458797995232788519222738348032" - 1/26328072917139296674479506920917595990465577038445476696064" - 1/52656145834278593348959013841835191980931154076890953392128" - 1/105312291668557186697918027683670383961862308153781906784256" - 1/210624583337114373395836055367340767923724616307563813568512" - 1/421249166674228746791672110734681535847449232615127627137024" - 1/842498333348457493583344221469363071694898465230255254274048" - 1/1684996666896914987166688442938726143389796930460510508548096" - 1/3369993333793829974333376885877452286779593860921021017096192" - 1/6739986667587659948666753771754904573559187721842042034192384" - 1/13479973335175319897333507543509809147118375443684084068384768" - 1/26959946670350639794667015087019618294236750887368168136769536" - 1/53919893340701279589334030174039236588473501774736336273539072" - 1/107839786681402559178668060348078473176947003549472672547078144" - 1/215679573362805118357336120696156946353894007098945345094156288" - 1/431359146725610236714672241392313892707788014197890690188312576" - 1/862718293451220473429344482784627785415576028395781380376625152" - 1/1725436586902440946858688965569254970831152056791562760753250304" - 1/3450873173804881893716694054300616959862594691087204352" - 1/6901746347609763787433388108601233919725189382174408704" - 1/1380349269521952757486677621720246783945037876434881728" - 1/2760698539043905514973355243440493567890075752869763456" - 1/5521397078087811029946710486880987135780151505739526912" - 1/11042794156175622059893420973761974271560303011479053824" - 1/2208558831235124411978684194752394854312060602295806752" - 1/4417117662470248823957368389504789708624121204591613504" - 1/8834235324940497647914736779009579417248242409183227008" - 1/17668470649880995295829473558019158834496484818366454016" - 1/35336941299761990591658947116038317668992969636732908032" - 1/70673882599523981183317894232076635337985939273465816064" - 1/14134776519904796236663778464692103515415336137523196672" - 1/2826955303980959247332755732938420703083067227003624448" - 1/565391070796191847466551147587684140616613445500928" - 1/1130782141592383694933102295175368281233226891001856" - 1/2261564283184767389866204593546736562466453782003712" - 1/4523128566369534779732409187093473124932907564007424" - 1/904625713371143755946481837418674854312060602295806752" - 1/1809251426702287411912963678237349708624121204591613504" - 1/3618502853404574823825927356474699417248242409183227008" - 1/7237005706809149647651854712949398834496484818366454016" - 1/1447401141361829929530370942589879708624121204591613504" - 1/2894802282723659859060741885179759417248242409183227008" - 1/578960456544731971812148377035951834496484818366454016" - 1/115792091088456394362429674407191668896489636732908032" - 1/231584182176912788724859348814383337793181873465816064" - 1/463168364353825577449718697628766675586363746931632128" - 1/926336728707651154899437395257533351172727473863264256" - 1/1852673457415302309798874790514666702345454737262528512" - 1/37053469148306046195977495810293334046909094745250561024" - 1/74106938296612092391954991620586668093818189490501122048" - 1/148213875533240184783909983241173336187636378981002244096" - 1/2964277510664803695678199664823466723752727579620044912" - 1/5928555021329607391356399329646933447505455159240089824" - 1/1185711004265921478271279865929386689501091031680177936" - 1/2371422008531842956542559731858773790002182063360355872" - 1/4742844017063685913085119463717547580004364126720711744" - 1/9485688034127371826170238927435095160008728253441423488" - 1/1897137606825474365234047844870119020001756506688284736" - 1/3794275213650948730468095689740238040003513013376569472" - 1/7588550427301897460936191379480476080007026026753138944" - 1/15177100854603794921872382758960952160014052053506277888" - 1/30354201709207589843744765517921904320028104107012555776" - 1/60708403418415179687489531035843808640056208214025111552" - 1/121416806836830359374979062071687617280112416428050223104" - 1/24283361367366071874995812414337523456022483285610044608" - 1/48566722734732143749991624828675046912044966571220089216" - 1/97133445469464287499983249657350093824089933142440178304" - 1/194266890938928574999964499114700187648179866284880356608" - 1/388533781877857149999928998229400375296359732569760713216" - 1/777067563755714299999857996458800750592719465139521426432" - 1/1554135127511428599999715992917601501185438930279042852864" - 1/3108270255022857199999431985835203002370877				

RESERVOIR ASS'Y 8 GAL. AW-480150

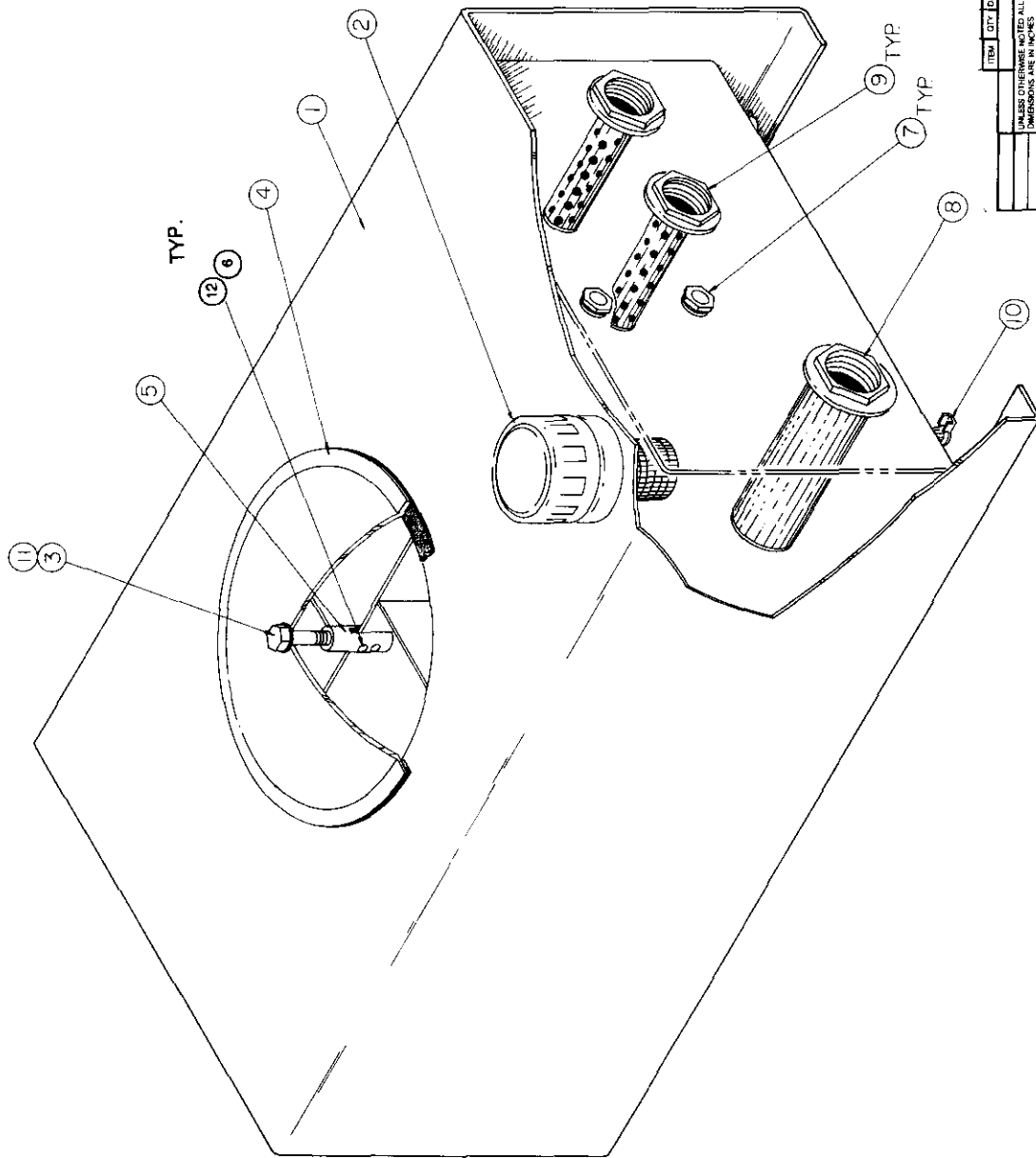
ITEM	QTY.	PART NO.	DESCRIPTION
1	1	360151	FILLER ASS'Y
2	2	360156	FILTER ASS'Y (SEE NOTE 2)
3	1	366212	VENTED RELIEF VALVE ASS'Y
4	1	360150	SIGHT PLUG
5	1	360262	TEE
6	1	360263	ELL
7	1	551222	ELL
8	1	360054	ADAPTER, STRAIGHT
9	1	360284	HOSE ASS'Y
10	1	480151	RESERVOIR, WELDMENT
11	1	750715	DRAIN
12	4	005500	SCREW, 1/4 - 20 X 3/4" LG.
13	4	020200	WASHER, 1/4 SP. LK.
14	1	360249	COVER, CLEAN OUT
15	1	360282	STRAINER, SUCTION LINE
16	1	360276	DUST CAP
17	1	360272	DUST CAP
18	1	360279	DUST CAP
19	1	360271	DUST CAP
20	1	REF.	ADAPTER, 16-16
21	1	REF.	HOSE, -16
22	1	REF.	HOSE ADAPTER, 16-16
23	4	REF.	HOSE CLAMPS, -16
24	1	REF.	ADAPTER, 8-8
25	1	REF.	ADAPTER, 8-10
26	2	REF.	FITTING, REUSABLE 10-12
27	1	REF.	HOSE, -12
28	3	REF.	FITTING, REUSABLE, 8-8
29	1	REF.	FITTING, REUSABLE, 10-8
30	2	REF.	HOSE, -8

NOTE:

1. THE REFERENCED ITEMS CAN BE PURCHASED AS A KIT WITH PART NUMBER 480159
2. FOR REPLACEMENT FILTER, ORDER PART NUMBER 360277

REV	DESCRIPTION	DATE	APP'D
1			

REV	DESCRIPTION
1	



ITEM	QTY	DIS	PART NO	DESCRIPTION
1	1		100-1000	RESERVOIR, 16 GAL TOP ASSY.
2	1		100-1000	RESERVOIR, 16 GAL TOP ASSY.
3	1		100-1000	RESERVOIR, 16 GAL TOP ASSY.
4	1		100-1000	RESERVOIR, 16 GAL TOP ASSY.
5	1		100-1000	RESERVOIR, 16 GAL TOP ASSY.
6	1		100-1000	RESERVOIR, 16 GAL TOP ASSY.
7	1		100-1000	RESERVOIR, 16 GAL TOP ASSY.
8	1		100-1000	RESERVOIR, 16 GAL TOP ASSY.
9	1		100-1000	RESERVOIR, 16 GAL TOP ASSY.
10	1		100-1000	RESERVOIR, 16 GAL TOP ASSY.
11	1		100-1000	RESERVOIR, 16 GAL TOP ASSY.
12	1		100-1000	RESERVOIR, 16 GAL TOP ASSY.

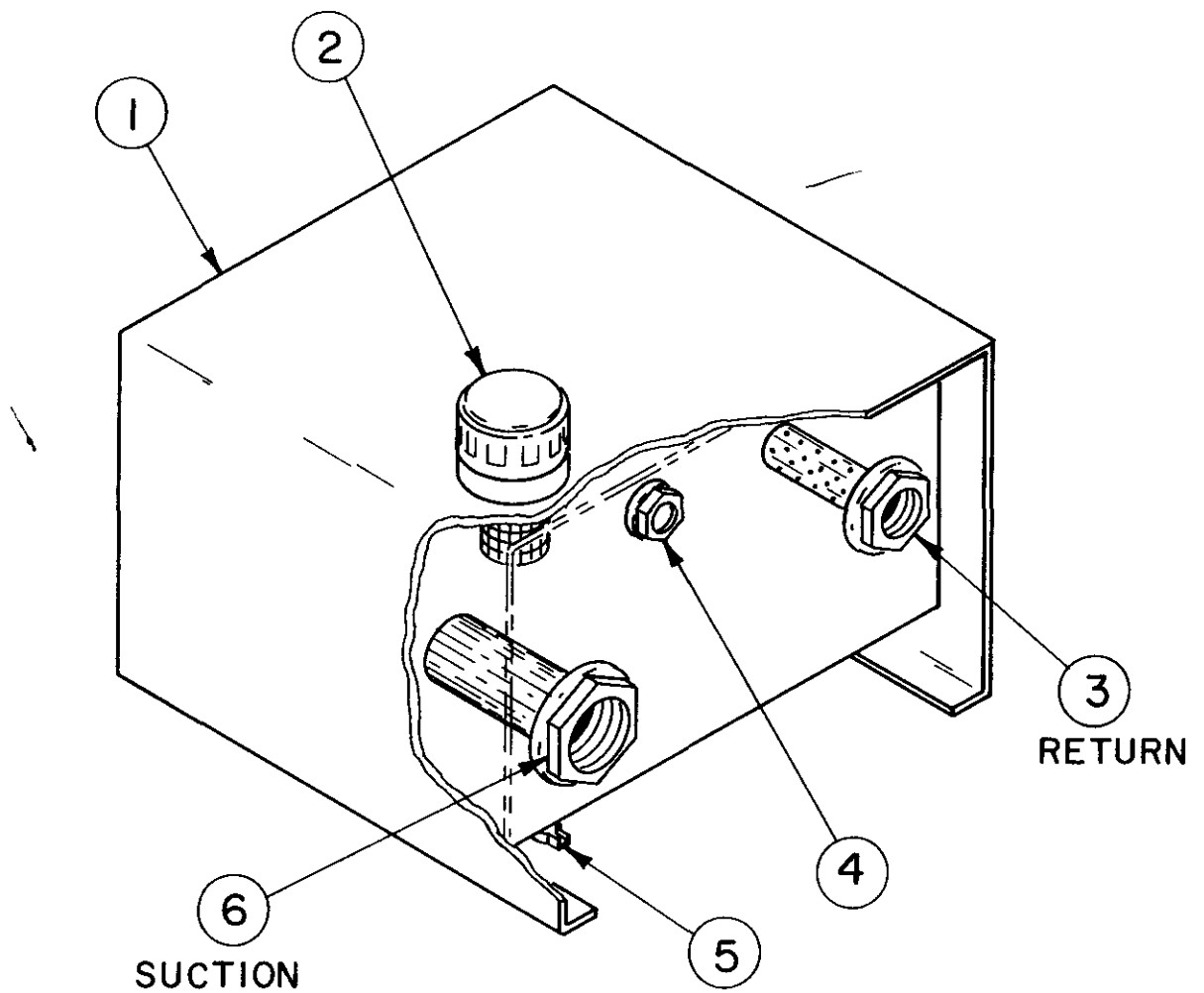
AUTO CRANE COMPANY

RESERVOIR, 16 GAL TOP ASSY.

SCALE: 1" = 1" DRAWING NO: 100-1000 SHEET 1 OF 1

RESERVOIR, 18 GALLON AW-750690

ITEM	QTY.	PART NO.	DESCRIPTION
1	1	750691	RESERVOIR WELD ASS'Y
2	1	360151	FILLER ASS'Y
3	1	750711	BOLT, END COVER
4	1	750712	END COVER
5	1	750709	ADAPTER, BAFFLE
6	2	330394	SCREW, 3/8 X 1 1/2 HX. HD. NC
7	2	360150	PLUG, RESERVOIR
8	1	750707	STRAINER, SUCTION
9	2	750708	STRAINER, DIFFUSER
10	1	750715	VALVE, DRAIN
11	1	750716	CRUSH WASHER
12	2	017301	NUT 3/8 NC. HX. LK.

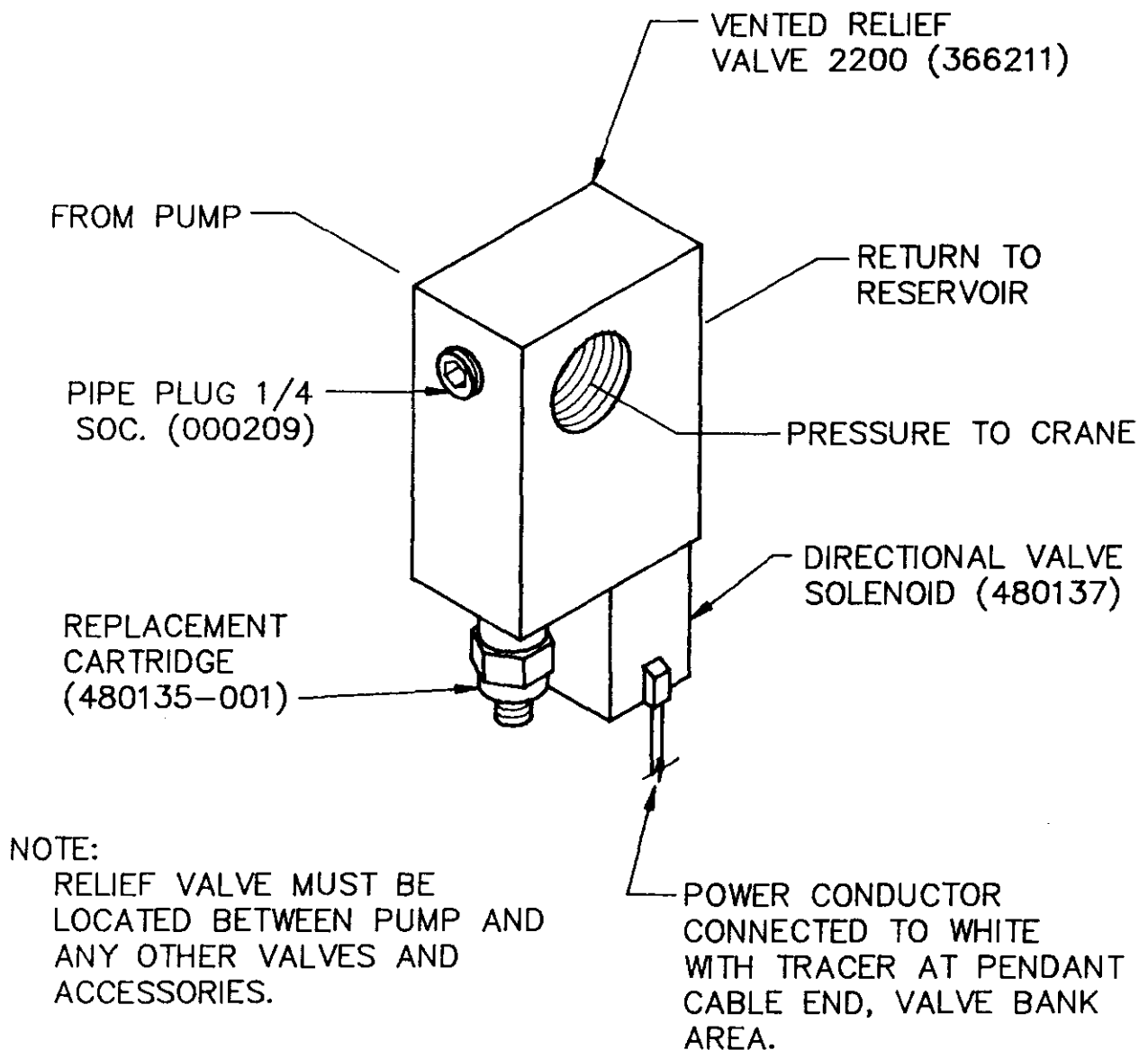


9 GALLON RESERVOIR

PART NO. 750500

RESERVOIR ASS'Y AW-750500

ITEM	QTY.	PART NO.	DESCRIPTION
1	1	750501	RESERVOIR, WELD. ASS'Y
2	1	360151	FILLER ASS'Y
3	1	750708	STRAINER, DIFFUSER
4	1	360150	SIGHT GAGE
5	1	750715	DRAIN VALVE
6	1	360282	STRAINER, SUCTION



VENTED RELIEF VALVE ASSEMBLY, WITH SOLENOID

PART NO. 366212

6-6-9

FIXTURE NO.	FINISH NO.	CHG	REVISIONS			
		LTR	DESCRIPTION			DATE APP'D

NOTE:
FOR SEAL KIT ORDER PART NO. 480184-001

2	1	-	480186	SPOOL ASSEMBLY
1	1	-	480185	COIL, CARTRIDGE

ITEM	QTY	D/S	PART NO.	DESCRIPTION
QUANTITY				
LIST OF MATERIAL				

<p>UNLESS OTHERWISE NOTED ALL DIMENSIONS ARE IN INCHES. TOLERANCES UNLESS OTHERWISE SPECIFIED.</p> <p>ANGLES $\pm 1/2^\circ$.XX $\pm .40$ FRACTIONAL $\pm 1/16$.XXX $\pm .010$</p> <p>REMOVE ALL BURRS AND SHARP EDGES. DO NOT SCALE THIS DRAWING.</p> <p>TOLERANCES NOT SHOWN ABOVE ARE PER ANSI Y14.5 - 1973</p> <p>THIS PRINT IS THE PROPERTY OF AUTO CRANE CO. AND MUST NOT BE USED IN ANY MANNER DETRIMENTAL TO THEIR INTERESTS.</p>	<p>DRAWN BY <i>W. J. Strong</i></p> <p>DATE 9-20-84</p> <p>CHK'D BY</p> <p>DATE</p> <p>ENG. BY</p> <p>DATE</p>	<p>AUTO CRANE COMPANY</p> <p>TITLE VALVE CARTRIDGE</p> <p>SCALE \sim SIZE B DRAWING NO. AW-480184 REVISION</p> <p>WEIGHT</p> <p>SHEET <u>1</u> OF <u>1</u></p>
--	--	---

6-10.0.0

FIXTURE NO.	FINISH NO.	CHG LTR	REVISIONS	DATE	APP'D
		DESCRIPTION			

.438" DIA. THRU.
2 HOLES

ADAPTER: SAE "A" 2-BOLT FLANGE (DIRECT MOUNT)
SHAFT: STRAIGHT, 3/4" DIA. X 2 3/4" LONG
KEY: 3/16" SQ. X 1 5/8" LONG

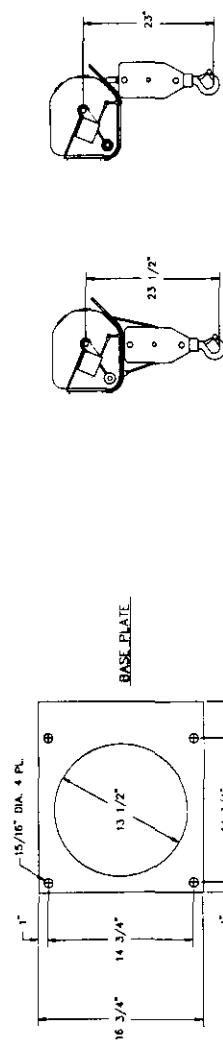
3/4 -14 N.P.T.
2 PLACES

8 G.P.M. AT 1000 R.P.M.

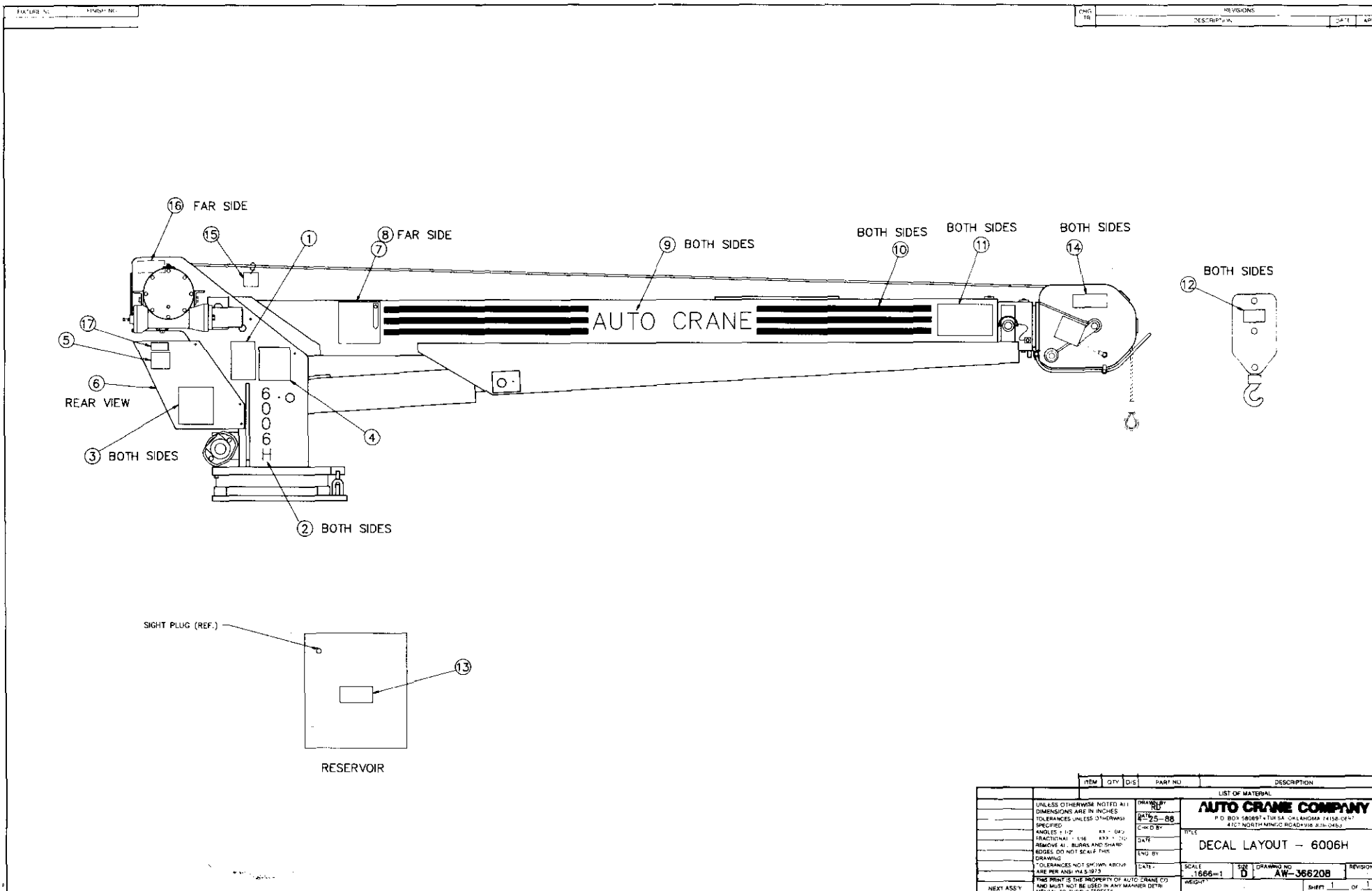
NOTES:

- FOR HYD. PUMP ASSEMBLY USE PART NO. 480022, WHICH CONSISTS OF HYD. PUMP (480018), ADAPTER SUCTION (360055) 3/4-14 NPT / 1 5/16-12 JIC. ADAPTER PRESSURE (750399) 3/4-14 NPT / 1 1/16-12 JIC
- FOR SEAL KIT, USE PART NO. 480018-001
- FOR SERVICE KIT, USE PART NO. 480018-002

ITEM	QTY	D/S	PART NO.	DESCRIPTION
LIST OF MATERIAL				
UNLESS OTHERWISE NOTED ALL DIMENSIONS ARE IN INCHES. TOLERANCES UNLESS OTHERWISE SPECIFIED: ANGLES $\pm 1/2^\circ$ XX $\pm .040$ FRACTIONAL $\pm 1/16$ XXX $\pm .010$ REMOVE ALL BURRS AND SHARP EDGES. DO NOT SCALE THIS DRAWING. TOLERANCES NOT SHOWN ABOVE ARE PER ANSI Y14.5-1973 THIS PRINT IS THE PROPERTY OF AUTO CRANE CO. AND MUST NOT BE USED IN ANY MANNER DETRIMENTAL TO THEIR INTERESTS.			DRAWN BY <i>R. DAY</i>	
			DATE	
			CHK'D BY	
			DATE	
NEXT ASSY			TITLE PUMP, HYDRAULIC - DIRECT MOUNT	
			SCALE <i>1/2" = 1"</i> SIZE B DRAWING NO. AW-480018 REVISION	
			WEIGHT	
			SHEET 1 OF 1	

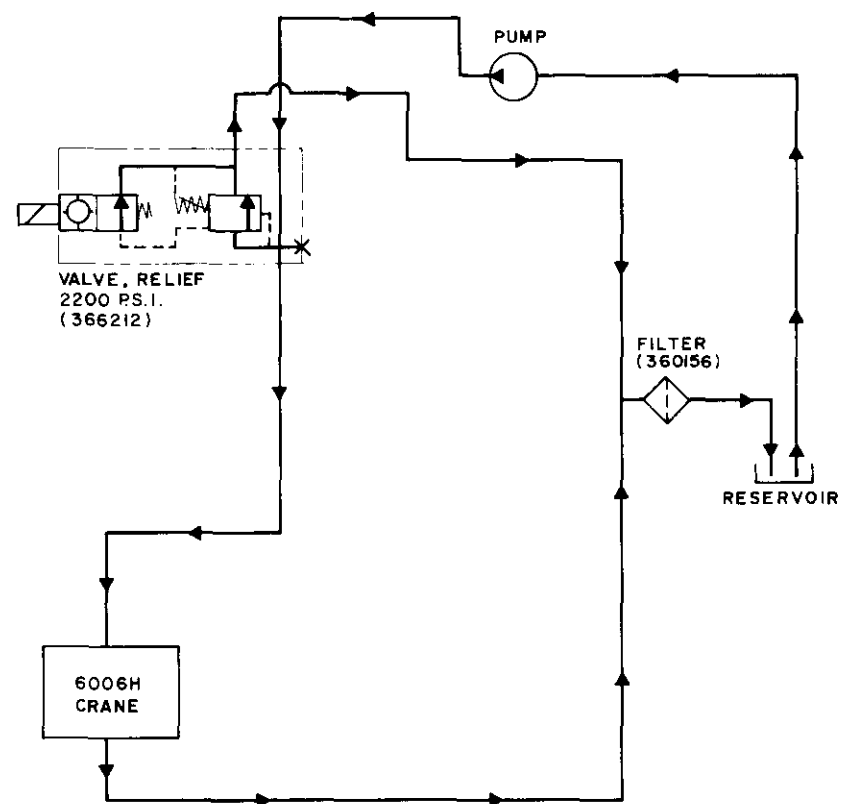
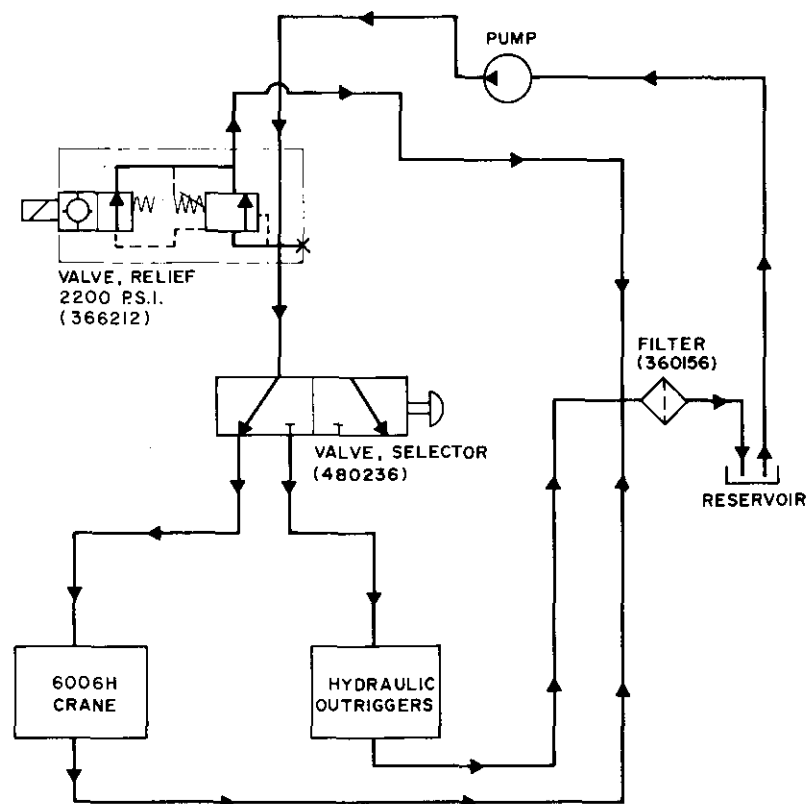
[illegible]

7-2.0.0



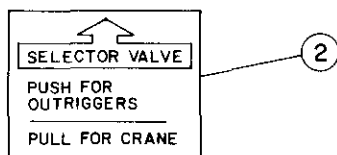
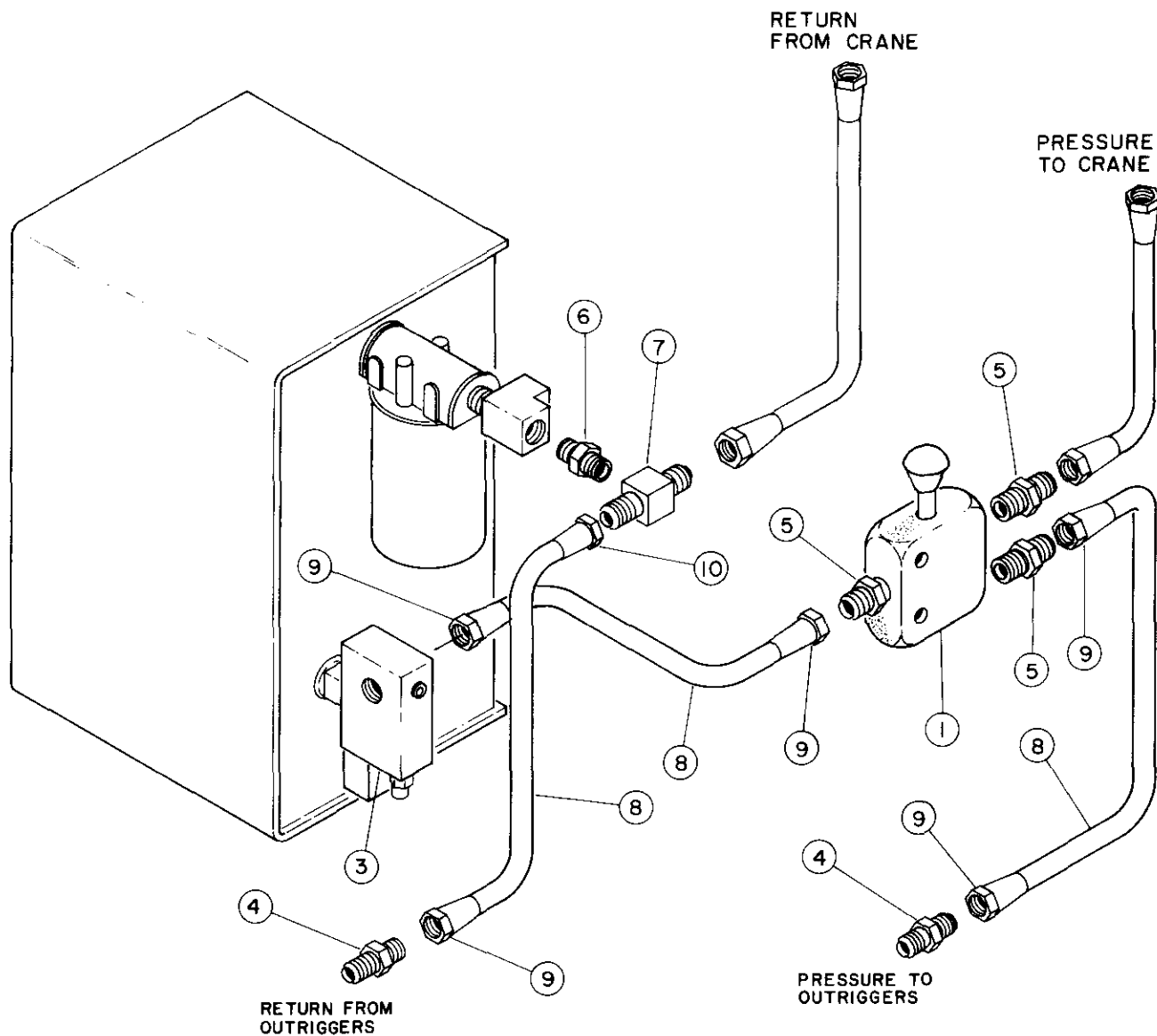
DECAL LAYOUT 6006H, AW-366208

ITEM	QTY.	PART NO.	DESCRIPTION
1	1	040579	DECAL, WORK RULES
2	2	366210	DECAL, 6006H
3	2	366195	LOAD CHART
4	1	040580	DECAL, OPERATE
5	1	040632	DECAL, WARNING, CYL. IN OPER.
6	1	360034	DECAL A/C LOGO
7	1	360036	DECAL, ANGLE IND. RIGHT
8	1	360037	DECAL, ANGLE IND. LEFT
9	2	040624	DECAL, AUTO CRANE
10	13'	040620	STRIPING
11	2	040529	DECAL, WIRING SHOCK
12	2	040630	DECAL, STAY CLEAR OF LOAD
13	1	366209	CAUTION, 8 GPM
14	2	040517	DECAL, STAY CLEAR OF BOOM
15	1	999946	CHECKLIST
16	1	330622	DECAL, SERIAL NO.
17	1	330633	DECAL, OPTI-FLOW



8-1.0.0

		ITEM	D/S	PART NO	DESCRIPTION
QUANTITY		LIST OF MATERIAL			
UNLESS OTHERWISE NOTED ALL DIMENSIONS ARE IN INCHES. TOLERANCES UNLESS OTHERWISE SPECIFIED: ANGLES ± 1/2° .XX ± .40 FRACTIONAL ± 1/16 .XXX ± .010 REMOVE ALL BURRS AND SHARP EDGES. DO NOT SCALE THIS DRAWING. TOLERANCES NOT SHOWN ABOVE ARE PER ANSI Y14.5-1973.		DRAWN BY B.D.	AUTO CRANE COMPANY TITLE HYDRAULIC SCHEMATIC 6006H WITH / WITHOUT HYDRAULIC OUTRIGGERS		
		DATE			
		CHK'D BY			
		DATE			
		ENG. BY	SCALE		
		DATE	SIZE		
THIS PRINT IS THE PROPERTY OF AUTO CRANE CO. AND MUST NOT BE USED IN ANY MANNER DETRIMENTAL TO THEIR INTERESTS.			DRAWING NO. C AW-068		
NEXT ASS'Y			REVISION		
			SHEET ____ OF ____		



NOTES

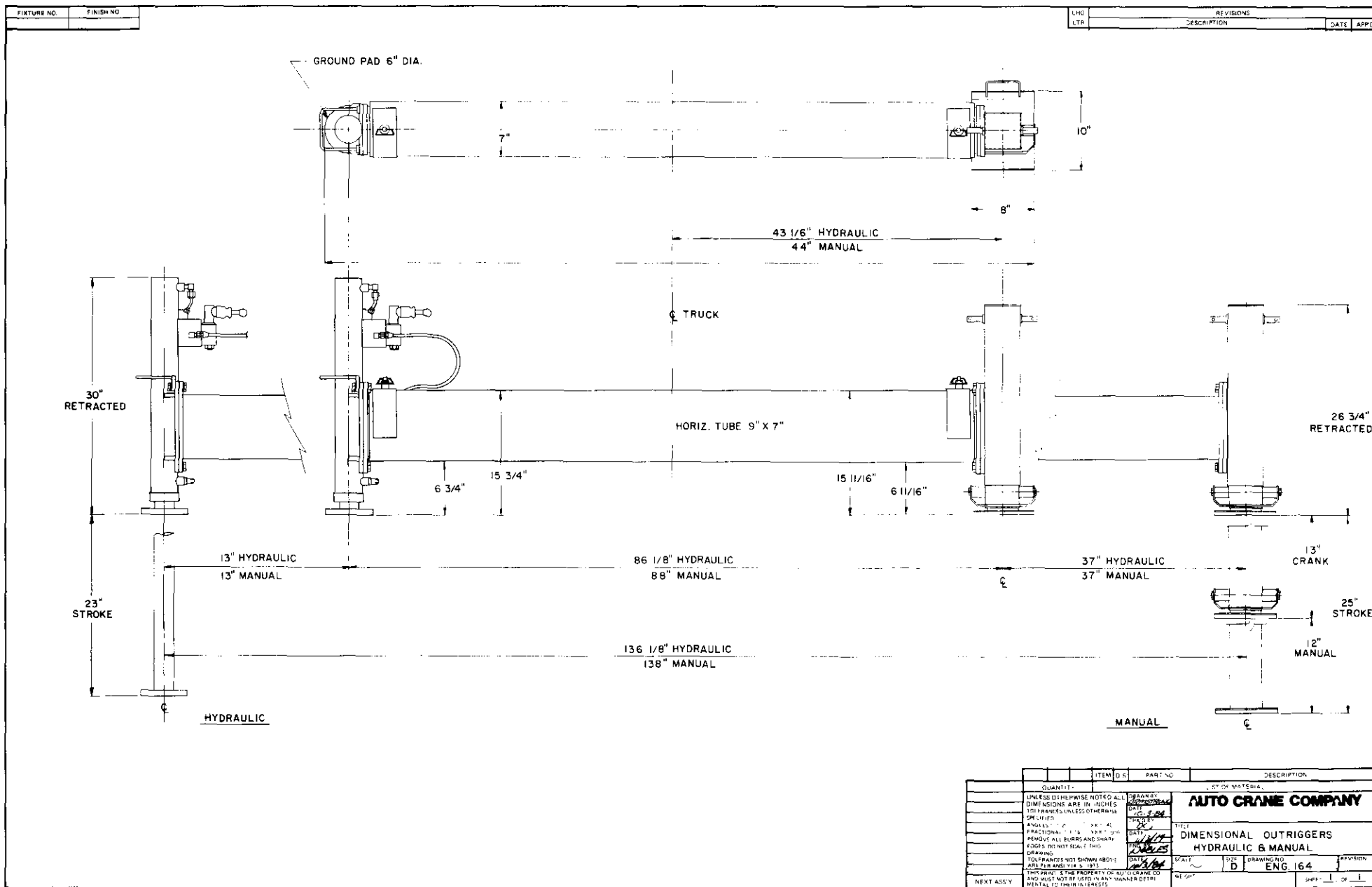
1. ITEMS 4 THROUGH 10 MAY BE PURCHASED AS A KIT WITH PART NUMBER 480234.
2. FOR ADDITIONAL INFORMATION, SEE AW-480150 AND 366212.

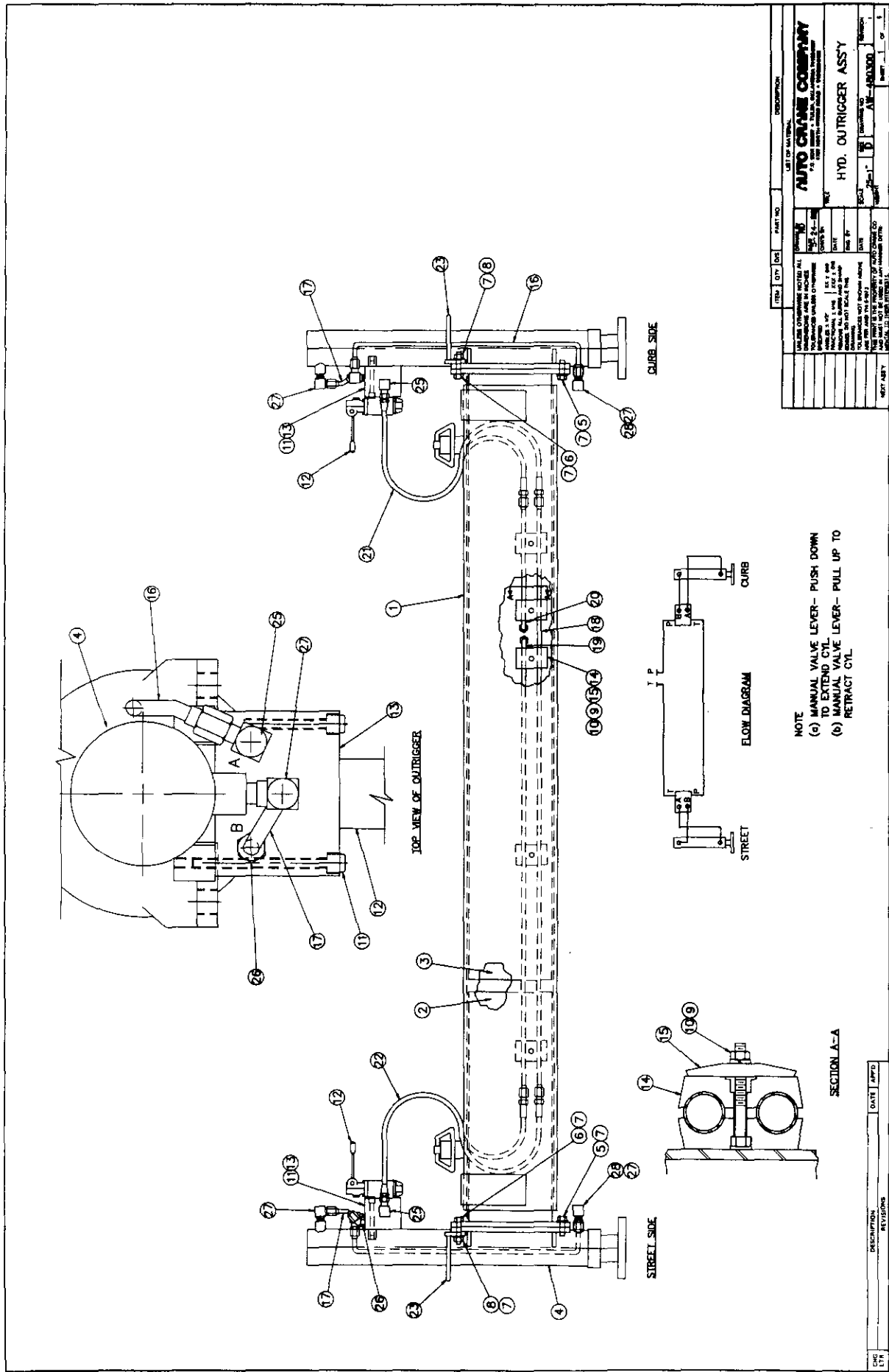
ITEM	QTY.	PART NO.	DESCRIPTION
1	1	480236	SELECTOR VALVE
2	1	750271	DECAL, SELECTOR VALVE
3	1	REF.	DUMP VALVE ASS'Y
4	2	REF.	ADAPTER ST. -8 JIC / -8 JIC
5	3	REF.	ADAPTER ST. -8 NPT / -8 JIC
6	1	REF.	ADAPTER ST. -8 NPT / -12 NPT
7	1	REF.	TEE, -10 JIC RUN / -8 NPT FEM.
8	12'	REF.	HOSE, -8
9	5	REF.	HOSE FITTING, -8 JIC / -8 HOSE
10	1	REF.	HOSE FITTING, -8 JIC / -10 HOSE

OUTRIGGER INSTALLATION KIT

PART NO. 480235

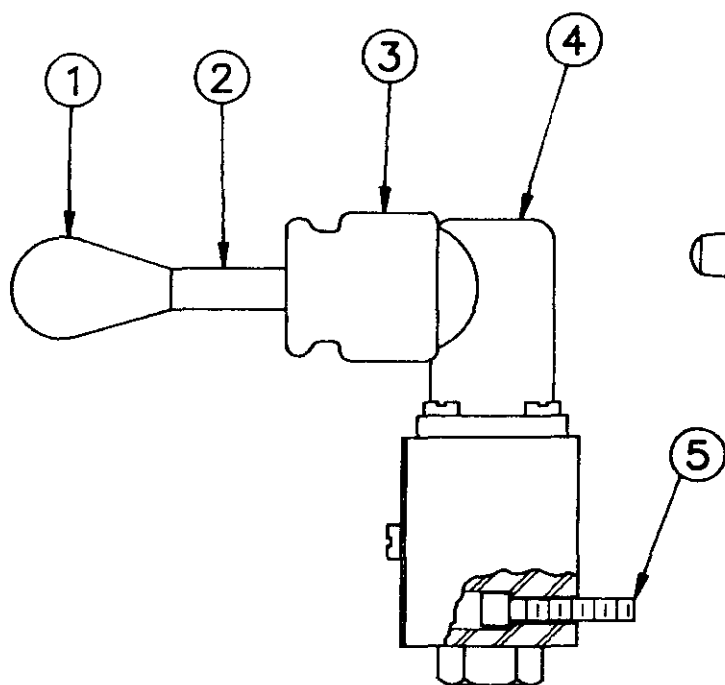
8-3-0.0





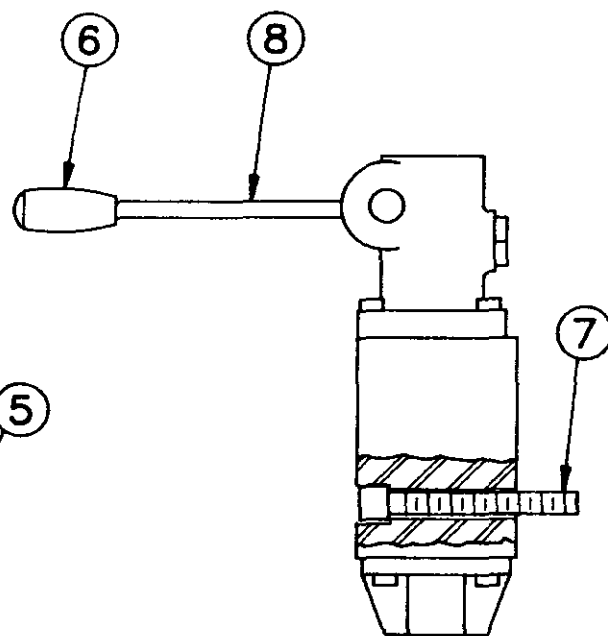
HYD. OUTRIGGER ASS'Y, AW-480300

ITEM	QTY.	PART NO.	DESCRIPTION
1	1	759035	MAIN CROSS TUBE
2	1	750893	SLIDE, STREET SIDE
3	1	750894	SLIDE, CURB SIDE
4	2	480017	CYLINDER, VERTICAL
5	4	012203	SCREW, HX. HD. 5/8 - NF X 1 1/4
6	8	013506	SCREW, HX. HD. 5/8 - NF X 2 1/4
7	8	023800	WASHER, SP. LK. 5/8
8	4	018302	NUT, HX. 5/8 - NF
9	5	016500	NUT, HX. 5/16 - NC
10	5	020600	WASHER, SP. LK. 5/16
11	4	003906	SCREW SOC. HD. 5/16 - 18 NC X 3 1/4
12	2	480230	VALVE MANUAL, OUTRIGGER (VERTICAL)
13	2	480231	MANIFOLD, OUTRIGGER
14	5	480232	CLAMP, HALVES
15	5	480233	PLATE, TWIN COVER
16	2	480220	TUBE ASS'Y (LEG)
17	2	480221	TUBE ASS'Y (LEG)
18	1	480222	TUBE ASS'Y
19	1	480223	TUBE ASS'Y
20	1	480224	TUBE ASS'Y
21	2	480225	HOSE ASS'Y O.R. (CURB SIDE)
22	2	480226	HOSE ASS'Y O.R. (STREET SIDE)
23	2	480227	HANDLE ASS'Y
24	1	480235	KIT, OUTRIGGER INSTALLATION
25	6	241175	ELL, 90°, -6 ORB/ -6 JIC
26	2	480195	ELL, 45°, -6 ORB/ -6 JIC
27	4	200892	ELL, 90°, 3/8 NP/ -6 JIC
28	2	360048	ELL, 90°, -6 NPT/ -6 NPTF
29	1	480014	SEAL KIT (FOR CYL. 480017)



CONTINENTAL

SEAL KIT (CONTINENTAL)
480230-009



REXROTH

SEAL KITS (REXROTH)
480230-010, BUNA (LOW TEMP.)
480230-011, VITA (HIGH TEMP.)

AW-073. OUTRIGGER VALVE (PART NO. 480230)

OUTRIGGER VALVE, AW-073

ITEM	QTY.	PART NO.	DESCRIPTION
1	1	480230-001	KNOB
2	1	480230-002	LEVER ASS'Y
3	1	480230-003	BOOT
4	1	480230-004	HOUSING, ASS'Y
5	1	480230-005	BOLT KIT (4 SOC. HD. SCREWS #10 - 24 X 7/8)
6	1	480230-006	KNOB
7	1	480230-007	BOLT KIT(4, SOC. HD. SCREWS #10 - 24 X 2" LG)
8	1	480230-008	LEVER ASS'Y



NOTES:

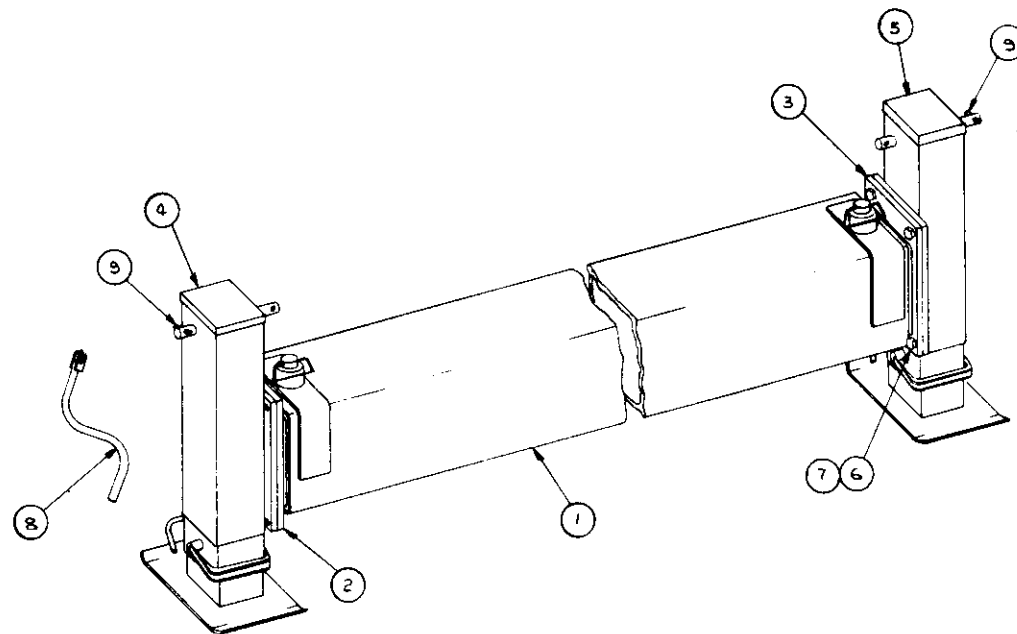
2. CAUTION: ON HYDRAULIC OUTRIGGERS (REF P/N-480170), POSITION SO THAT THE WELD OR BRACING DOES NOT INTERFERE WITH HYDRAULIC TUBING OR HOSE HOOK-UP.

QUANTITY		ITEM NO.	CART NO.	DESCRIPTION
JULIUS (OTHERWISE NOT ALL DIMENSIONS ARE IN INCHES UNLESS OTHERWISE SPECIFIED)		DRAWING NO. 10-11-1		LIST OF MATERIAL
AW-137 12 2X 40 40		10-11-1		AUTO CRANE COMPANY
MACHINE, 11000 LB. CAP.		DATE		7000 HUNTSVILLE AVENUE & REDWATER • 510-837-8476
REMOVE 40 LB. RAS AND SHAS		TIME		INSTALLATION - OUTRIGGERS 800SH
CABLE 100' NOT USED - 100'				
DRAWING				
TOLERANCES NOT SHOWN: ANGLES ±1° PLACES ±1/16" ±.003				
NEK-ASS-3				
REMARKS: THE FOLLOWING LIST OF MATERIAL IS FOR THE CRANE AND NOT FOR THE CRANE AND NOT FOR THE CRANE AND NOT FOR THE CRANE				
		WEIGHT	SCALE	SPRINGS NO. 10000
			D	AW-108
				SHEET 1 OF 1

8-7.0.0

FIXTURE NO.	FINISH NO.

CHG	REVISIONS	DATE
LTR	DESCRIPTION	

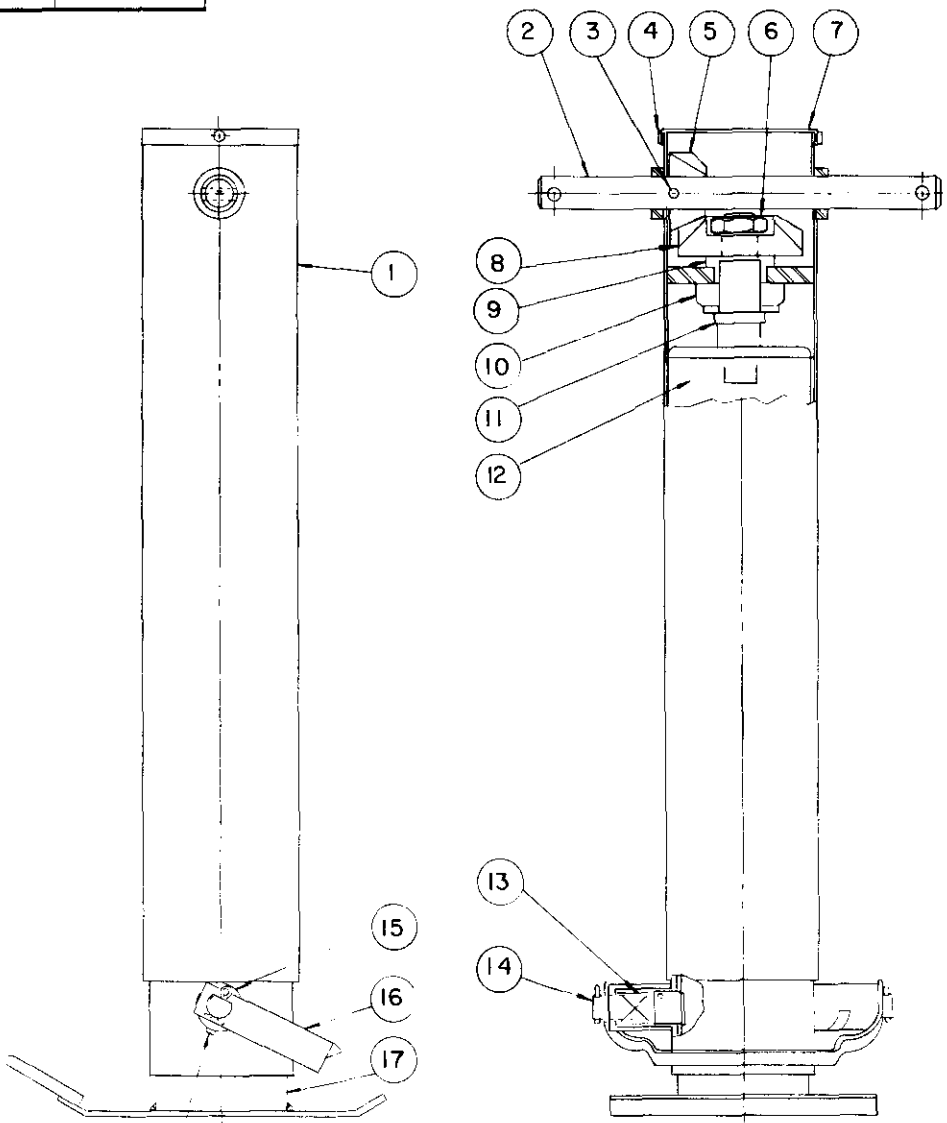


NOTE:
INSTALL ITEM 9 (PIN) WITH
1/2 INCH EACH SIDE OF CRANK SHAFT.

2	9	A	480162	PIN, ROLL 3/8 x 2 LG.
1	8	A	480164	HANDLE CRANK
8	7	A	023800	WASHER, SP LK 5/8
8	6	A	012203	SCREW HX HD 5/8 NF x 1 1/8 LG
1	5	B	480169	OUTRIGGER, MANUAL WELDMENT (R)
1	4	B	480168	OUTRIGGER, MANUAL WELDMENT (L)
1	3	B	750894	SLIDE, CURB SIDE
1	2	B	750893	SLIDE, STREET SIDE
1	1	B	750891	MAIN CROSS TUBE ASSY

QUANTITY	ITEM	D/S	PART NO	DESCRIPTION								
UNLESS OTHERWISE NOTED ALL DIMENSIONS ARE IN INCHES. TOLERANCES UNLESS OTHERWISE SPECIFIED												
ANGLES: 1/2" XX" FRACTIONAL: 1/16 XXX: .010 REMOVE ALL BURRS AND SHARP EDGES. DO NOT SCALE THIS DRAWING TOLERANCES NOT SHOWN ABOVE ARE PER ANSI Y14.5, 1973 THIS PRINT IS THE PROPERTY OF AUTO CRANE CO AND MUST NOT BE USED IN ANY MANNER DETRIMENTAL TO THEIR INTERESTS.												
<table border="0"> <tr> <td> DRAWN BY RICKMAN DATE 5-5-84 CHK'D BY OK DATE 5-10-84 ENG BY NICKLES DATE 5-10-84 </td> <td> AUTO CRANE COMPANY P.O. BOX 45548 • TULSA, OKLAHOMA 74145 9260 BROKEN ARROW EXPRESSWAY • 918-627-9475 </td> </tr> <tr> <td colspan="2"> TITLE OUTRIGGER ASSEMBLY (MANUAL) </td> </tr> <tr> <td> SCALE 1 - C </td> <td> DRAWING NO AW-480301 </td> </tr> <tr> <td> WEIGHT </td> <td> REVISION - </td> </tr> </table>					DRAWN BY RICKMAN DATE 5-5-84 CHK'D BY OK DATE 5-10-84 ENG BY NICKLES DATE 5-10-84	AUTO CRANE COMPANY P.O. BOX 45548 • TULSA, OKLAHOMA 74145 9260 BROKEN ARROW EXPRESSWAY • 918-627-9475	TITLE OUTRIGGER ASSEMBLY (MANUAL)		SCALE 1 - C	DRAWING NO AW-480301	WEIGHT	REVISION -
DRAWN BY RICKMAN DATE 5-5-84 CHK'D BY OK DATE 5-10-84 ENG BY NICKLES DATE 5-10-84	AUTO CRANE COMPANY P.O. BOX 45548 • TULSA, OKLAHOMA 74145 9260 BROKEN ARROW EXPRESSWAY • 918-627-9475											
TITLE OUTRIGGER ASSEMBLY (MANUAL)												
SCALE 1 - C	DRAWING NO AW-480301											
WEIGHT	REVISION -											
NEXT ASS'Y												

8-8.0.0

FIXTURE NO.		FINISH NO.		CHG		REVISIONS		DATE		APP'D																																																																																															
				LTR		DESCRIPTION																																																																																																			
				<table border="1"><thead><tr><th>ITEM</th><th>D/S</th><th>PART NO.</th><th>DESCRIPTION</th></tr></thead><tbody><tr><td>2</td><td>18</td><td>A</td><td>480287</td><td>ROLL PIN</td></tr><tr><td>1</td><td>17</td><td>A</td><td>480286</td><td>DROP LEG S/A</td></tr><tr><td>1</td><td>16</td><td>A</td><td>480285</td><td>SHOT PIN HANDLE</td></tr><tr><td>2</td><td>15</td><td>A</td><td>480284</td><td>COTTER PIN</td></tr><tr><td>2</td><td>14</td><td>A</td><td>480283</td><td>SHOT PIN</td></tr><tr><td>2</td><td>13</td><td>A</td><td>480282</td><td>COMP SPRING</td></tr><tr><td>1</td><td>12</td><td>A</td><td>480281</td><td>INNER LEG S/A</td></tr><tr><td>1</td><td>11</td><td>A</td><td>480280</td><td>SPECIAL WASHER</td></tr><tr><td>1</td><td>10</td><td>A</td><td>480279</td><td>THRUST BEARING</td></tr><tr><td>1</td><td>9</td><td>A</td><td>480278</td><td>BUSHING</td></tr><tr><td>1</td><td>8</td><td>A</td><td>480277</td><td>BEVEL GEAR</td></tr><tr><td>1</td><td>7</td><td>A</td><td>480276</td><td>COVER</td></tr><tr><td>1</td><td>6</td><td>A</td><td>480275</td><td>JAM NUT</td></tr><tr><td>1</td><td>5</td><td>A</td><td>480274</td><td>BEVEL PINION GEAR</td></tr><tr><td>2</td><td>4</td><td>A</td><td>480273</td><td>SELF TAPPING SCR.</td></tr><tr><td>1</td><td>3</td><td>A</td><td>480272</td><td>SPRAL PIN</td></tr><tr><td>1</td><td>2</td><td>A</td><td>480271</td><td>CRANK SHAFT</td></tr><tr><td>1</td><td>1</td><td>A</td><td>480270</td><td>OUTER LEG S/A</td></tr></tbody></table>								ITEM	D/S	PART NO.	DESCRIPTION	2	18	A	480287	ROLL PIN	1	17	A	480286	DROP LEG S/A	1	16	A	480285	SHOT PIN HANDLE	2	15	A	480284	COTTER PIN	2	14	A	480283	SHOT PIN	2	13	A	480282	COMP SPRING	1	12	A	480281	INNER LEG S/A	1	11	A	480280	SPECIAL WASHER	1	10	A	480279	THRUST BEARING	1	9	A	480278	BUSHING	1	8	A	480277	BEVEL GEAR	1	7	A	480276	COVER	1	6	A	480275	JAM NUT	1	5	A	480274	BEVEL PINION GEAR	2	4	A	480273	SELF TAPPING SCR.	1	3	A	480272	SPRAL PIN	1	2	A	480271	CRANK SHAFT	1	1	A	480270	OUTER LEG S/A
ITEM	D/S	PART NO.	DESCRIPTION																																																																																																						
2	18	A	480287	ROLL PIN																																																																																																					
1	17	A	480286	DROP LEG S/A																																																																																																					
1	16	A	480285	SHOT PIN HANDLE																																																																																																					
2	15	A	480284	COTTER PIN																																																																																																					
2	14	A	480283	SHOT PIN																																																																																																					
2	13	A	480282	COMP SPRING																																																																																																					
1	12	A	480281	INNER LEG S/A																																																																																																					
1	11	A	480280	SPECIAL WASHER																																																																																																					
1	10	A	480279	THRUST BEARING																																																																																																					
1	9	A	480278	BUSHING																																																																																																					
1	8	A	480277	BEVEL GEAR																																																																																																					
1	7	A	480276	COVER																																																																																																					
1	6	A	480275	JAM NUT																																																																																																					
1	5	A	480274	BEVEL PINION GEAR																																																																																																					
2	4	A	480273	SELF TAPPING SCR.																																																																																																					
1	3	A	480272	SPRAL PIN																																																																																																					
1	2	A	480271	CRANK SHAFT																																																																																																					
1	1	A	480270	OUTER LEG S/A																																																																																																					
<p>18 - INSERT ROLL PIN UNTIL FLUSH WITH OUTSIDE OF TUBE.</p>				<table border="1"><thead><tr><th colspan="2">QUANTITY</th><th colspan="2">LIST OF MATERIAL</th></tr></thead><tbody><tr><td colspan="2">UNLESS OTHERWISE NOTED ALL DIMENSIONS ARE IN INCHES.</td><td colspan="2">DRAWN BY</td></tr><tr><td colspan="2">TOLERANCES UNLESS OTHERWISE SPECIFIED</td><td colspan="2">DATE</td></tr><tr><td colspan="2">ANGLES $\pm 1/2^\circ$ XX $\pm .40$</td><td colspan="2">CHK'D BY</td></tr><tr><td colspan="2">FRACTIONAL $\pm 1/16$ XXX $\pm .010$</td><td colspan="2">DATE</td></tr><tr><td colspan="2">REMOVE ALL BURRS AND SHARP EDGES DO NOT SCALE THIS DRAWING.</td><td colspan="2">ENG BY</td></tr><tr><td colspan="2">TOLERANCES NOT SHOWN ABOVE ARE PER ANSI Y14.5-1973</td><td colspan="2">DATE</td></tr><tr><td colspan="2">THIS PRINT IS THE PROPERTY OF AUTO CRANE CO. AND MUST NOT BE USED IN ANY MANNER DETRIMENTAL TO THEIR INTERESTS.</td><td colspan="2">SCALE</td></tr><tr><td colspan="2">NEXT ASS'Y</td><td colspan="2">SIZE</td></tr><tr><td colspan="2"></td><td colspan="2">WEIGHT</td></tr></tbody></table>								QUANTITY		LIST OF MATERIAL		UNLESS OTHERWISE NOTED ALL DIMENSIONS ARE IN INCHES.		DRAWN BY		TOLERANCES UNLESS OTHERWISE SPECIFIED		DATE		ANGLES $\pm 1/2^\circ$ XX $\pm .40$		CHK'D BY		FRACTIONAL $\pm 1/16$ XXX $\pm .010$		DATE		REMOVE ALL BURRS AND SHARP EDGES DO NOT SCALE THIS DRAWING.		ENG BY		TOLERANCES NOT SHOWN ABOVE ARE PER ANSI Y14.5-1973		DATE		THIS PRINT IS THE PROPERTY OF AUTO CRANE CO. AND MUST NOT BE USED IN ANY MANNER DETRIMENTAL TO THEIR INTERESTS.		SCALE		NEXT ASS'Y		SIZE				WEIGHT																																																							
QUANTITY		LIST OF MATERIAL																																																																																																							
UNLESS OTHERWISE NOTED ALL DIMENSIONS ARE IN INCHES.		DRAWN BY																																																																																																							
TOLERANCES UNLESS OTHERWISE SPECIFIED		DATE																																																																																																							
ANGLES $\pm 1/2^\circ$ XX $\pm .40$		CHK'D BY																																																																																																							
FRACTIONAL $\pm 1/16$ XXX $\pm .010$		DATE																																																																																																							
REMOVE ALL BURRS AND SHARP EDGES DO NOT SCALE THIS DRAWING.		ENG BY																																																																																																							
TOLERANCES NOT SHOWN ABOVE ARE PER ANSI Y14.5-1973		DATE																																																																																																							
THIS PRINT IS THE PROPERTY OF AUTO CRANE CO. AND MUST NOT BE USED IN ANY MANNER DETRIMENTAL TO THEIR INTERESTS.		SCALE																																																																																																							
NEXT ASS'Y		SIZE																																																																																																							
		WEIGHT																																																																																																							
				<table border="1"><thead><tr><th colspan="2">TITLE</th><th colspan="2">DRAWING NO.</th><th colspan="2">REVISION</th></tr></thead><tbody><tr><td colspan="2">OUTRIGGER, MANUAL</td><td colspan="2">AW-480166</td><td colspan="2"></td></tr><tr><td colspan="2"></td><td colspan="2"></td><td colspan="2">SHEET 2 OF 2</td></tr></tbody></table>								TITLE		DRAWING NO.		REVISION		OUTRIGGER, MANUAL		AW-480166								SHEET 2 OF 2																																																																													
TITLE		DRAWING NO.		REVISION																																																																																																					
OUTRIGGER, MANUAL		AW-480166																																																																																																							
				SHEET 2 OF 2																																																																																																					

AUTO CRANE COMPANY

P.O. BOX 45548 • TULSA, OKLAHOMA 74145
9260 BROKEN ARROW EXPRESSWAY • 918.627.9475

OUTRIGGER, MANUAL

C AW-480166



AUTO CRANE COMPANY

P. O. BOX 581510 • TULSA, OKLAHOMA 74158

Limited Warranty

Auto Crane will warranty to consumer for a period of twelve months from date of purchase that each new Auto Crane product it sells will be free under normal use and service, from defects in material and workmanship. Date of purchase will be honored as either date of purchase by distributor or his date of sale of the product as substantiated by Distributor Delivery Report.

Obligation of Auto Crane under this warranty is limited to replacement or repair of parts that appear to manufacturer after review and / or inspection to be defective. This warranty does not obligate Auto Crane to bear the cost of labor or transportation charges in connection with the replacement or repair of defective parts. Responsibility for customer's claims arising from misapplication, abuse, misuse or alteration of equipment or parts lies with the distributor or user and no warranty obligation is assumed in the circumstances by Auto Crane.

Auto Crane will in no event be liable for any consequential damages or contingent liabilities arising out of the failure of any Auto Crane product or parts to operate properly.

Auto Crane makes no warranty in respect to component accessories, same being subject to the warranties of their respective manufacturers.

If field service, at the request of buyer, is rendered and fault is found not to be with Auto Crane's product, the buyer shall pay the time and expense of the field representative. Claims for service labor or other expenses that have been incurred by the buyer without approval or authorization of Auto Crane will not be accepted.

AUTO CRANE COMPANY IS UNDER NO OBLIGATION TO EXTEND THIS WARRANTY TO ANY CUSTOMER FOR WHICH AN AUTO CRANE WARRANTY REGISTRATION CARD HAS NOT BEEN COMPLETED AND MAILED TO AUTO CRANE COMPANY WITHIN FIFTEEN (15) DAYS AFTER DATE OF PURCHASE.