

Auto Crane Company

9260 Broken Arrow Expressway
P.O. Box 470548 — Tulsa, Oklahoma 74147-0548
PHONE (918) 627-9475

OWNER'S MANUAL

5005H SERIES

Serial No. _____

5005H OWNER'S MANUAL

— CONTENTS —

	Page
1. OPERATION, SERVICE, & SAFETY TIPS	2
2. INSTALLATION	5
3. MAINTENANCE	10
4. GENERAL ASSEMBLY	11
5. ROTATION GEAR BOX	17
6. HOIST ACTUATOR	19
7. ELECTRICAL SECTION	22
8. HYDRAULIC SECTION	26
9. RESERVOIR ASSEMBLY	31
10. GENERAL DIMENSIONS	37
11. STABILIZERS	41
12. WARRANTY	42

AUTO CRANE

OPERATION, SERVICE, AND MAINTENANCE TIPS

Auto Crane products have been engineered to provide safe, trouble-free, dependable service for many years when these products are properly used and maintained.

To assist you in obtaining the best service from your crane and to avoid untimely failure of the unit and/or the vehicle on which it is mounted, the following operating and service instructions are herein published, and it is specifically recommended that all operating and service personnel consider this manual as mandatory material for reading and study before operating or servicing Auto Crane products. It is highly recommended that crane owners, equipment managers and supervisors also read this manual.

Auto Crane has incorporated several safety features in the 5005H series for your protection. The material and electrical systems were designed to minimize weight and lengthen durability. The hydraulic components are designed for a 4:1 safety factor. Holding valves are installed on the cylinders to prevent the load from dropping if a hose should fail. A 10u filter is installed in the hydraulic system to remove dirt and grit that may cause premature failure. The reservoir is protected with a 15u filter in the filler cap.

For your convenience the overall dimensions of the 5005H series are included on the General Dimension Drawing Eng. 50. Rotation and turning radius are also listed. See page 37.

Remember that the crane adds weight to the vehicle and may change the driving and riding characteristics of the vehicle on which it is mounted unless this weight is properly provided for with appropriate overload springs. The payload of the vehicle is also reduced by the amount that the crane weighs, and as the vehicle is loaded, care should be exercised not to overload the vehicle. Exercising care in distributing the payload on the vehicle will greatly improve the driving and riding characteristics of the vehicle. A minimum G.V.W. of 10,500 lbs. is recommended for mounting the 5005H series cranes.

Always take the necessary time to properly install and/or set the jacklegs or outriggers before lifting a load with the crane. Insure that the base of the jacklegs or outriggers is firmly positioned on solid footings, at a minimum of 79 inches from the center line of the chassis on the curb side. The extra time taken to properly set these outriggers will be more than compensated for by the reduced wear on the

vehicle. Most of the best engineered bodies have jackleg positions or "pockets" at each corner (minimum of four pockets). It is highly recommended that crane operators take full advantage of these four pockets (i.e., use a jackleg in each pocket on the "curb side" of the body when unloading or loading from this side). Always place jacklegs solidly under the body area where the load is being handled by the crane. **Remember—in lifting a heavy load, the weight can create enough tipping moment to overturn the vehicle.**

The 5005H boom was designed to handle column or compressive loads and bending loads induced from the load. **If twisting loads are induced by trying to lift or drag a load from the side, the boom can fail far below its rated capacity.**

Never operate the crane near overhead electrical power lines. Auto Crane Company recommends that a crane boom never be moved any closer to a power line (including telephone lines) than 20 feet at any point.

Occasionally a customer will overload a crane and bend the boom and try to straighten the boom and reinforce it by welding angle or plate to it; or they replace a component with an inappropriate, locally purchased component. The Auto Crane Company cannot warrant a unit under these conditions. Auto Crane Company utilizes a 50,000 P.S.I. yield type steel in all our crane structural sections. If a unit should be heavily overloaded, it would "crumple" rather than snap as a brittle type steel (yield point close to tensile point) would react. This is the main reason that Auto Crane cannot permit a customer to weld on Auto Crane units. Welding heat could change the molecular structure and cause the steel to become brittle. All of the various components utilized in Auto Crane Products have been thoroughly tested and are the best available for the particular function they perform. Many components are custom built to stringent Auto Crane specifications. Auto Crane Company has a continuous "on-going" Research and Development Program, and as new components appear on the market, they are thoroughly tested. Only a few of these many components pass the rigid requirements demanded by Auto Crane Engineers. This is the basic reason that our warranty is automatically void when a customer replaces a factory furnished part with an "unauthorized" component which has not been factory tested and approved.

Auto Crane Company issues a limited warranty certificate with each unit sold. See last page for warranty policy.

If material or workmanship is involved, immediate corrective action is taken. It is therefore, understandable that Auto Crane Company cannot assume responsibility or liability when our products have obviously been abused, mis-used, overloaded or otherwise damaged by inexperienced persons trying to operate the equipment without even reading the manual. The Auto Crane is designed and built to be safe and efficient. Auto Crane will not assume responsibility or liability for any unit which has been modified, changed, or which has unauthorized or unapproved components installed.

Auto Crane Company maintains a crew of skilled and highly trained Service Personnel. The men in our Service Department are available to all of our customers throughout the continental limits of the United States. Many times a telephone conversation with a serviceman can solve a

customer's equipment problem. When the serviceman makes a field trip, an accepted warranty claim trip is naturally paid by Auto Crane Company; however, our service rates are reasonable and, in most instances, the serviceman can repair a damaged unit on the spot, plus the Auto Crane serviceman can train customer operators, maintenance and servicemen in the field. This training can alleviate a lot of customer expense due to inexperienced personnel, and most customers agree that the nominal service trip expense is well worth the cost because of the training benefits gained.

Auto Crane Company's extensive Research and Development Program assures our customers of the best equipment on the market, and our Engineering Staff, as well as our knowledgeable sales people are always available to our customers in solving crane and winch-type problems. When in doubt — call the Auto Crane factory.

IMPORTANT

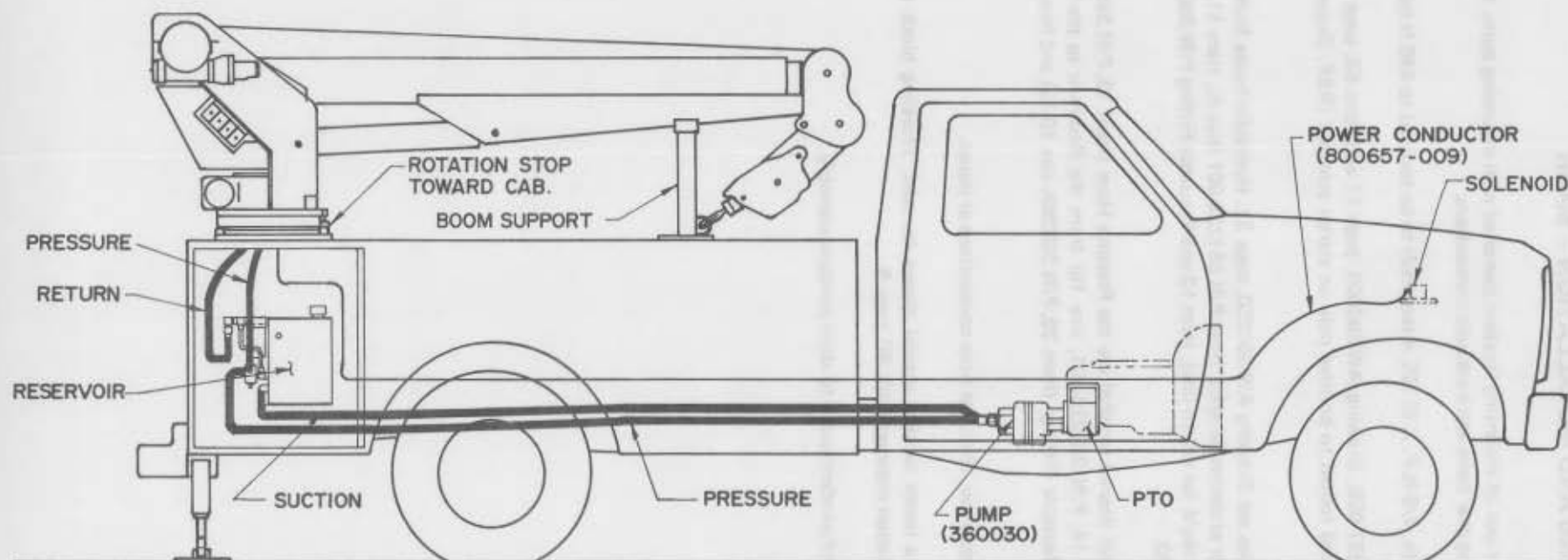
OPERATION PROCEDURES, SAFETY TIPS, AND PRECAUTIONS

1. Keep hoist cable pulled tight at all times.
2. Never un-reel last wrap of cable from drum.
3. Keep truck in as level a position as possible while loading or unloading.
4. Never wrap cable around load.
5. Use Jacklegs (stabilizers) from truck to the ground.
7. Oil gears as required. See Maintenance Section, page 10.
8. A friction brake holds the load when power is off. This brake may need to be adjusted periodically. Never adjust brake tighter than required to hold the load. Adjustment nut is located on rear of actuator.
9. An important item which an operator should consider and use properly is the hoist hook. It should be checked on a 30-day basis for distortion or cracks.
 - A. Never place a chain link on the tip of the hook and try to lift a load with the hoist.
 - B. Never use a sling bar or anything larger than the hook throat which could prevent the hook from closing with the block, thus negating the safety feature.
 - C. In case of a safety hook, always insure that the hook throat is closed before lifting a load. Proper attention and common sense applied to the use of the hoist hook and various slings will prevent possible damage to material being hoisted, and may prevent injury to personnel.

WHEN ORDERING REPLACEMENT PARTS, PLEASE PROVIDE THE FOLLOWING INFORMATION:

- (1) Model Number; (2) Serial Number; (3) Part Number and Description

FIXTURE NO.	FINISH NO.	CHG	REVISIONS		
		LTR	DESCRIPTION	DATE	APP'D



NOTES:

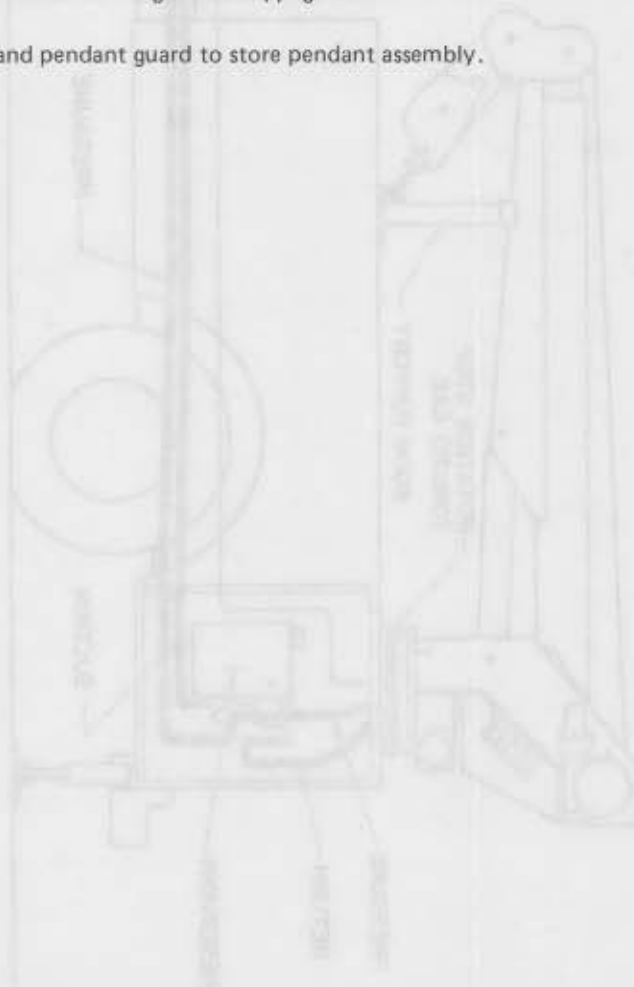
- SEE PAGE 6 FOR FURTHER INSTRUCTIONS.
- THE INSTALLATION ABOVE SHOWN IN SOLID LINE FORM FOR CLARITY.
- MAKE PRESSURE AND RETURN HOSES FROM THE RESERVOIR TO THE CRANE AS LONG AS POSSIBLE.

ITEM	D/S	PART NO.	DESCRIPTION
QUANTITY		LIST OF MATERIAL	
UNLESS OTHERWISE NOTED ALL DIMENSIONS ARE IN INCHES. TOLERANCES UNLESS OTHERWISE SPECIFIED.		AUTO CRANE COMPANY P.O. BOX 45548 • TULSA, OKLAHOMA 74145 9260 BROKEN ARROW EXPRESSWAY • 918-627-9475	
ANGLES $\pm 1/2^\circ$		TITLE	
FRACTIONAL $\pm 1/16$		MOUNTING AND INSTALLATION	
REMOVE ALL BURRS AND SHARP EDGES. DO NOT SCALE THIS DRAWING.		5005H	
TOLERANCES NOT SHOWN ABOVE ARE PER ANSI Y14.5 - 1973		SCALE	SIZE
THIS PRINT IS THE PROPERTY OF AUTO CRANE CO. AND MUST NOT BE USED IN ANY MANNER DETRIMENTAL TO THEIR INTERESTS.		WEIGHT	DRAWING NO.
NEXT ASS'Y			ENG. -60
			REVISION
			SHEET 1 OF 2

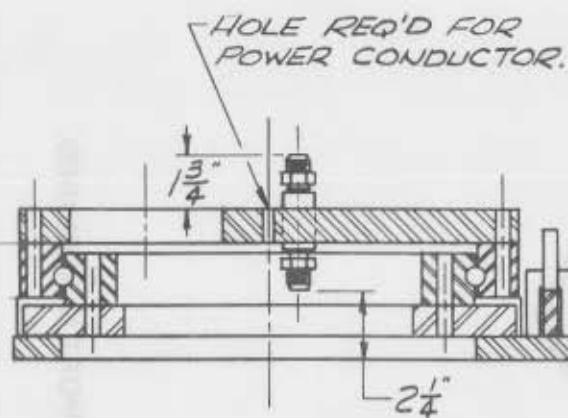
11/83

MOUNTING AND INSTALLATION – 5005H

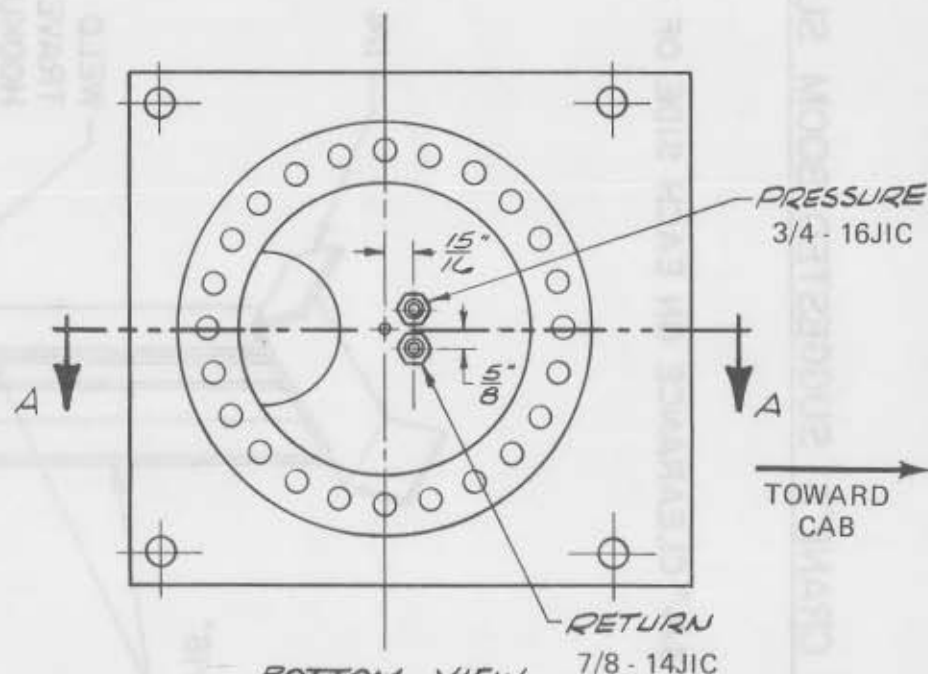
1. A 13-1/2" Dia. hole should be cut out of mounting location (centered with mounting bolts. Ref: ENG. 50, page 37) for access of lower ring gear bolts and hydraulic connections.
 2. Mounting bolts (015104 - Screw, Hx. 7/8 N.F. X 5" G5, 4 required) to be torqued to 440 ft.lbs. (dry).
 3. Power Conductor (Item 65, 800657-009, Drawing AW-360000, page 11 and Item 62, page 14) to be uncoiled from bottom of crane and routed to positive pole on starter solenoid (REF. Drawing ENG., page 5).
 4. REF: For the following instructions see Drawing AW-360250, page 31. Hydraulic hoses from reservoir to crane to be installed by customer at desired lengths. Hose P/N 551228-001 (size 8), Item 11. Reusable Fitting P/N 551227 (Size 10-8, 2 req'd for return line), Item 12 and Reusable Fitting P/N 360266 (Size 8, 2 req'd for pressure line), Item 23.
 5. Also to be installed by customer (at desired lengths) are the Pressure Hose (Item 13, P/N 360274-001, size 12) and Suction Hose (Item 14, P/N 360275-001, size 16) from the Reservoir to the Hydraulic Pump (REF: 360030, page 33). Reusable Fittings (Item 20, P/N 360269, size 10-12) and Hose Adapter (Item 21, P/N 360273) are used.
- NOTE:** If no pressure received at reservoir, alternate hose connections at pump.
6. When crane is not in operation, a boom support should always be used. Traveling block should be connected to hook loop. See Illustration drawing ENG. 60, page 5.
 7. Always use cable loops on boom and pendant guard to store pendant assembly.



FIXTURE NO.	FINISH NO.	CHG	REVISIONS			
			LTR	DESCRIPTION	DATE	APP'D



SECTION "A-A"



BOTTOM VIEW

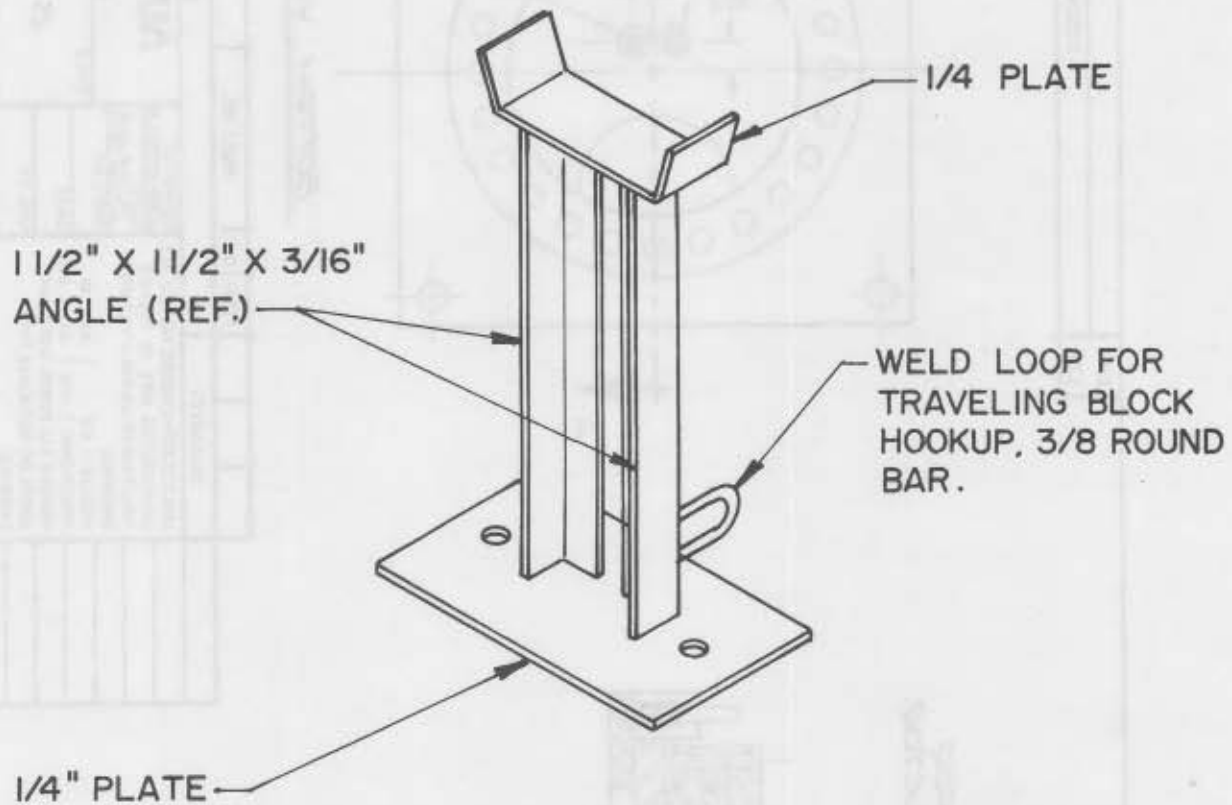
QUANTITY		ITEM	D/S	PART NO.	DESCRIPTION	
		LIST OF MATERIAL				
		AUTO CRANE COMPANY P.O. BOX 45548 • TULSA, OKLAHOMA 74145 9260 BROKEN ARROW EXPRESSWAY • 918-627-9475				
		BASE ASSEMBLY - 5005H				
		SCALE $\frac{1}{4}":1"$ SIZE B DRAWING NO. ENG. 61 REVISION				
		WEIGHT				SHEET <u>1</u> OF <u>1</u>

R05/84

NEXT ASS'Y

AUTO CRANE'S SUGGESTED BOOM SUPPORT

LEAVE 3/4" CLEARANCE ON EACH SIDE OF BOOM.



BOOM SUPPORT IS REQUIRED.

AUTO CRANE COMPANY

P.O. BOX 45548 • TULSA, OKLAHOMA 74145
9260 BROKEN ARROW EXPRESSWAY • 918-627-9475

WIRE LINE LUBRICATION

Lubrication of the wire line serves two important purposes: (1) helps to prevent corrosion; (2) lubricates the cable strands to reduce wear due to flexing and abrasion caused by contact with the sheaves, rollers and cable on the drum.

PREPARATION:

Remove rust and foreign matter with a wire brush and wipe clean. Be sure cable is dry.

APPLICATION:

Two methods are illustrated in figures 1 and 2. A light weight motor oil may be used, as in figure 1; or a heavier lubricant such as grease gun lubricant, as in figure 2.

Illustrated in figure 1 is one easy and effective method of applying lubrication. Dip the brush into the lubricant and apply. In some cases a rag or piece of sheepskin is dipped in the lubricant and used to swab the lubricant on to the rope.

Another simple method is shown in figure 2. Leather gloves are preferred to canvas because of greater protection and less penetration of the grease.



Fig. 1



Fig. 2

"LIFE OF WIRE LINE"

So many variable factors can cause the deterioration of wire line cable that it is not possible to determine a definite life expectancy.

Some of these factors are:

1. Load being handled.
2. Corrosive conditions.
3. Maintenance of the unit.
 - a. Keep the sheaves turning freely.
 - b. Maintain tension on cable to insure proper spooling.
 - c. Lubricate line. (See above)
 - d. Avoid kinks in cable.
 - e. Avoid abrasive action and contact with sharp corners.
4. Frequency of use.

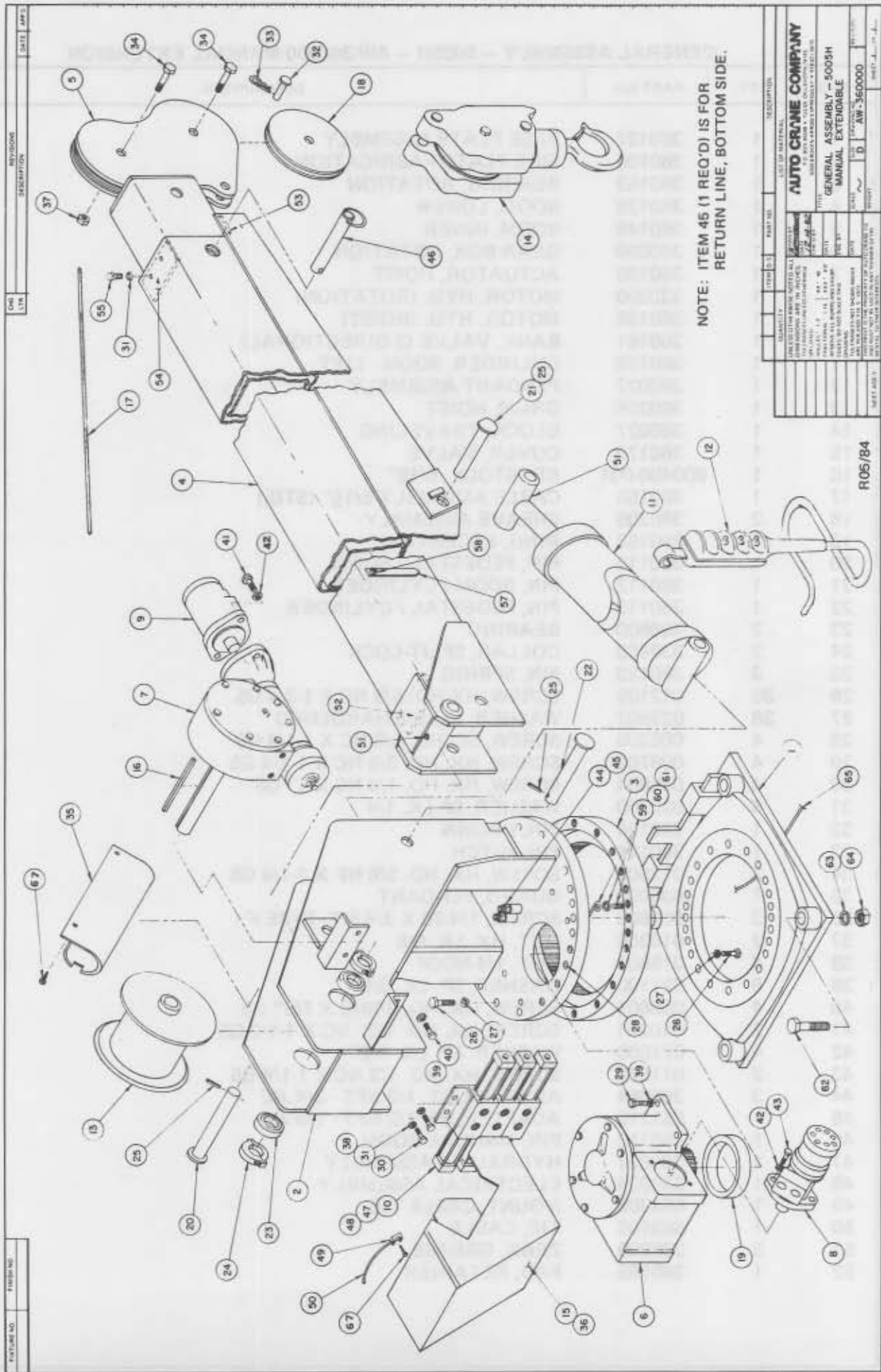
Auto Crane units, with 5000 pound ratings, use 5/16 inch diameter galvanized preformed 7 x 19 aircraft cable which, when new, has a minimum strength of 9800 pounds. It is recommended when 2500 pound loads are exceeded to use a two-part line with a traveling block. It can be seen that there is a safety factor of 3.9 to 1 when the cable is new.

Keeping the above factor of safety in mind and knowing the kind of loads that will be handled, the user can determine by inspection of the cable as to when it should be replaced.

Items to look for while inspecting the cables are:

1. Broken strands.
2. Kinks and flattened sections.
3. Corrosion and abrasion.

FIXTURE NO.	FINISH NO.	CHG LTR	REVISIONS	DATE	APP'D																																		
		DESCRIPTION																																					
		<ol style="list-style-type: none"> 1. SHEAVE ROLLER BEARINGS: SEALED TYPE. NO LUBE REQUIRED. 2. BOOM PADS: IF REPLACED, GREASE UPON INSTALLATION. USE CHASSIS LUBRICANT. 3. GREASE ZERK: PIVOT POINTS, (CYLINDER CROSSTUBE @ BOOM) (CYLINDER CROSSTUBE @ PEDESTAL) (BOOM PIVOT) 4. HOIST ROLLER BEARINGS: SEALED TYPE. NO LUBE REQUIRED. 5. HOIST ACTUATOR: MAINTAIN LUBE AT PLUG. USE EXTREME PRESSURE GEAR LUBE (E.P. 80-90). SPUR GEAR TO USE 30 WT. OIL. REPLACE LUBE EVERY SIX MONTHS. 6. ROTATION GEAR BOX: PACK GREASE THRU COVER AS REQUIRED TO MAINTAIN 5 LBS. (EPO-901 MULTIFAK OR EQUIVALENT). 7. RING GEAR: LUBE EVERY 6 MONTHS AT PINION. USE MOBILTAC LL OR EQUIVALENT. 8. RING GEAR RACE: LUBE EVERY 6 MONTHS AT ZERK. USE MOBILPLEX EP-2 OR EQUIVALENT. 9. BOLTS: RING GEAR - PEDESTAL BASE. REQUIRED TORQUE OF BOLTS IF REPLACED - 150#/LBS. HARDENED WASHERS REQUIRED. 																																					
		NOTE: BOLTS SHOULD BE CHECKED PERIODICALLY AND RETIGHTENED TO PROPER TORQUE. THE POSSIBILITY EXISTS THAT DUE TO THE STRESSES APPLIED TO THE ROTATION SYSTEM, THE BOLTS COULD WORK LOOSE.																																					
		<table border="1" style="width: 100%; border-collapse: collapse;"> <thead> <tr> <th style="width: 10%;">ITEM</th> <th style="width: 10%;">D/S</th> <th style="width: 10%;">PART NO.</th> <th style="width: 70%;">DESCRIPTION</th> </tr> </thead> <tbody> <tr> <td colspan="4">QUANTITY</td> </tr> <tr> <td colspan="4">LIST OF MATERIAL</td> </tr> <tr> <td colspan="4"> <div style="display: flex; justify-content: space-between;"> <div style="width: 45%;"> <p>UNLESS OTHERWISE NOTED ALL DIMENSIONS ARE IN INCHES. TOLERANCES UNLESS OTHERWISE SPECIFIED.</p> <p>ANGLES $\pm 1/2^\circ$.XX $\pm .40$</p> <p>FRACTIONAL $\pm 1/16$.XXX $\pm .010$</p> <p>REMOVE ALL BURRS AND SHARP EDGES. DO NOT SCALE THIS DRAWING.</p> <p>TOLERANCES NOT SHOWN ABOVE ARE PER ANSI Y14.5 - 1973</p> </div> <div style="width: 50%;"> <p>DRAWN BY <i>ARMSTRONG</i></p> <p>DATE 2-21-83</p> <p>CHK'D BY</p> <p>DATE</p> <p>ENG. BY</p> <p>DATE</p> </div> </div> </td> </tr> <tr> <td colspan="4"> <p style="text-align: center;">AUTO CRANE COMPANY</p> <p style="text-align: center;">P.O. BOX 45548 • TULSA, OKLAHOMA 74145</p> <p style="text-align: center;">9260 BROKEN ARROW EXPRESSWAY • 918-627-9475</p> </td> </tr> <tr> <td colspan="4"> <p style="text-align: center;">LUBRICATION - MAINTENANCE</p> <p style="text-align: center;">5005H</p> </td> </tr> <tr> <td colspan="2">SCALE </td> <td>SIZE B</td> <td>DRAWING NO. AW-5005</td> <td>REVISION</td> </tr> <tr> <td colspan="2">WEIGHT</td> <td colspan="3">SHEET <u>1</u> OF <u>1</u></td> </tr> </tbody> </table>				ITEM	D/S	PART NO.	DESCRIPTION	QUANTITY				LIST OF MATERIAL				<div style="display: flex; justify-content: space-between;"> <div style="width: 45%;"> <p>UNLESS OTHERWISE NOTED ALL DIMENSIONS ARE IN INCHES. TOLERANCES UNLESS OTHERWISE SPECIFIED.</p> <p>ANGLES $\pm 1/2^\circ$.XX $\pm .40$</p> <p>FRACTIONAL $\pm 1/16$.XXX $\pm .010$</p> <p>REMOVE ALL BURRS AND SHARP EDGES. DO NOT SCALE THIS DRAWING.</p> <p>TOLERANCES NOT SHOWN ABOVE ARE PER ANSI Y14.5 - 1973</p> </div> <div style="width: 50%;"> <p>DRAWN BY <i>ARMSTRONG</i></p> <p>DATE 2-21-83</p> <p>CHK'D BY</p> <p>DATE</p> <p>ENG. BY</p> <p>DATE</p> </div> </div>				<p style="text-align: center;">AUTO CRANE COMPANY</p> <p style="text-align: center;">P.O. BOX 45548 • TULSA, OKLAHOMA 74145</p> <p style="text-align: center;">9260 BROKEN ARROW EXPRESSWAY • 918-627-9475</p>				<p style="text-align: center;">LUBRICATION - MAINTENANCE</p> <p style="text-align: center;">5005H</p>				SCALE		SIZE B	DRAWING NO. AW-5005	REVISION	WEIGHT		SHEET <u>1</u> OF <u>1</u>		
		ITEM	D/S	PART NO.	DESCRIPTION																																		
		QUANTITY																																					
		LIST OF MATERIAL																																					
		<div style="display: flex; justify-content: space-between;"> <div style="width: 45%;"> <p>UNLESS OTHERWISE NOTED ALL DIMENSIONS ARE IN INCHES. TOLERANCES UNLESS OTHERWISE SPECIFIED.</p> <p>ANGLES $\pm 1/2^\circ$.XX $\pm .40$</p> <p>FRACTIONAL $\pm 1/16$.XXX $\pm .010$</p> <p>REMOVE ALL BURRS AND SHARP EDGES. DO NOT SCALE THIS DRAWING.</p> <p>TOLERANCES NOT SHOWN ABOVE ARE PER ANSI Y14.5 - 1973</p> </div> <div style="width: 50%;"> <p>DRAWN BY <i>ARMSTRONG</i></p> <p>DATE 2-21-83</p> <p>CHK'D BY</p> <p>DATE</p> <p>ENG. BY</p> <p>DATE</p> </div> </div>																																					
		<p style="text-align: center;">AUTO CRANE COMPANY</p> <p style="text-align: center;">P.O. BOX 45548 • TULSA, OKLAHOMA 74145</p> <p style="text-align: center;">9260 BROKEN ARROW EXPRESSWAY • 918-627-9475</p>																																					
		<p style="text-align: center;">LUBRICATION - MAINTENANCE</p> <p style="text-align: center;">5005H</p>																																					
		SCALE		SIZE B	DRAWING NO. AW-5005	REVISION																																	
WEIGHT		SHEET <u>1</u> OF <u>1</u>																																					
<p>THIS PRINT IS THE PROPERTY OF AUTO CRANE CO. AND MUST NOT BE USED IN ANY MANNER DETRIMENTAL TO THEIR INTERESTS.</p>																																							
<p>11/83</p>																																							
<p>NEXT ASS'Y</p>																																							



GENERAL ASSEMBLY - 5005H - AW-360000 MANUAL EXTENSION

ITEM	QTY.	PART NO.	DESCRIPTION
1	1	360127	BASE PLATE ASSEMBLY
2	1	360100	SIDE PLATE FABRICATION
3	1	360163	BEARING, ROTATION
4	1	360135	BOOM, LOWER
5	1	360146	BOOM, INNER
6	1	360099	GEAR BOX, ROTATION
7	1	360198	ACTUATOR, HOIST
8	1	330200	MOTOR, HYD. (ROTATION)
9	1	360199	MOTOR, HYD. (HOIST)
10	1	360161	BANK, VALVE (3 DIRECTIONAL)
11	1	360158	CYLINDER, BOOM - LIFT
12	1	360022	PENDANT ASSEMBLY
13	1	360208	DRUM, HOIST
14	1	360027	BLOCK, TRAVELING
15	1	360170	COVER, VALVE
16	1	800400-001	KEYSTOCK, 5/16"
17	1	360155	CABLE ASSEMBLY 5/16" (STD.)
18	2	360205	SHEAVE ASSEMBLY
19	1	360162	RING, ECCENTRIC
20	1	360115	PIN, PEDESTAL / BOOM
21	1	360117	PIN, BOOM / CYLINDER
22	1	360113	PIN, PEDESTAL / CYLINDER
23	2	400500	BEARING
24	2	330468	COLLAR, SPLIT-LOCK
25	3	360123	PIN, SPRING
26	38	012199	SCREW, HX. HD. 5/8 NC X 1-3/4 G5
27	38	023902	WASHER, FL. 5/8 HARDENED
28	4	006205	SCREW, SC. HD. 5/8 NC X 1-1/4 G5
29	4	008702	SCREW, HX. HD. 3/8 NC X 1-1/4 G5
30	4	005604	SCREW, HX. HD. 1/4 NC X 1" G5
31	6	020200	WASHER, SP. LK. 1/4
32	1	360126	PIN, CROWN
33	1	360124	PIN, HITCH
34	2	013506	SCREW, HX. HD. 5/8 NF X 2-1/4 G5
35	1	634000	GUARD, PENDANT
36	3	002608	SCREW, 1/4-20 X 3/4 S.T. TYPE F
37	2	018300	NUT, HX. LK. 5/8
38	4	015900	NUT, 1/4 NCCP
39	8	021100	WASHER, SP. LK. 3/8
40	4	008601	SCREW, HX. HD. 3/8NC X 7/8" G5
41	2	010201	SCREW, HX. HD. 1/2" NC X 1-1/2 G5
42	4	021500	WASHER SP. LK. 1/2"
43	2	011510	SCREW, HX. HD. 1/2 NC X 1-1/4 G5
44	3	360054	ADAPTER, ST. 1/2 NPT - 3/4 JIC
45	1	551215	ADAPTER, ST. 1/2 NPT - 7/8 JIC
46	1	360112	PIN, MANUAL BOOM
47	1	360021	HYDRAULIC ASSEMBLY
48	1	360024	ELECTRICAL ASSEMBLY
49	1	663300	MOUNT, CABLE TIE
50	1	663100	TIE, CABLE
51	3	239000	ZERK, GREASE
52	1	360165	PAD, RETAINER

GENERAL ASSEMBLY -- 5005H -- AW-360000 MANUAL EXTENSION

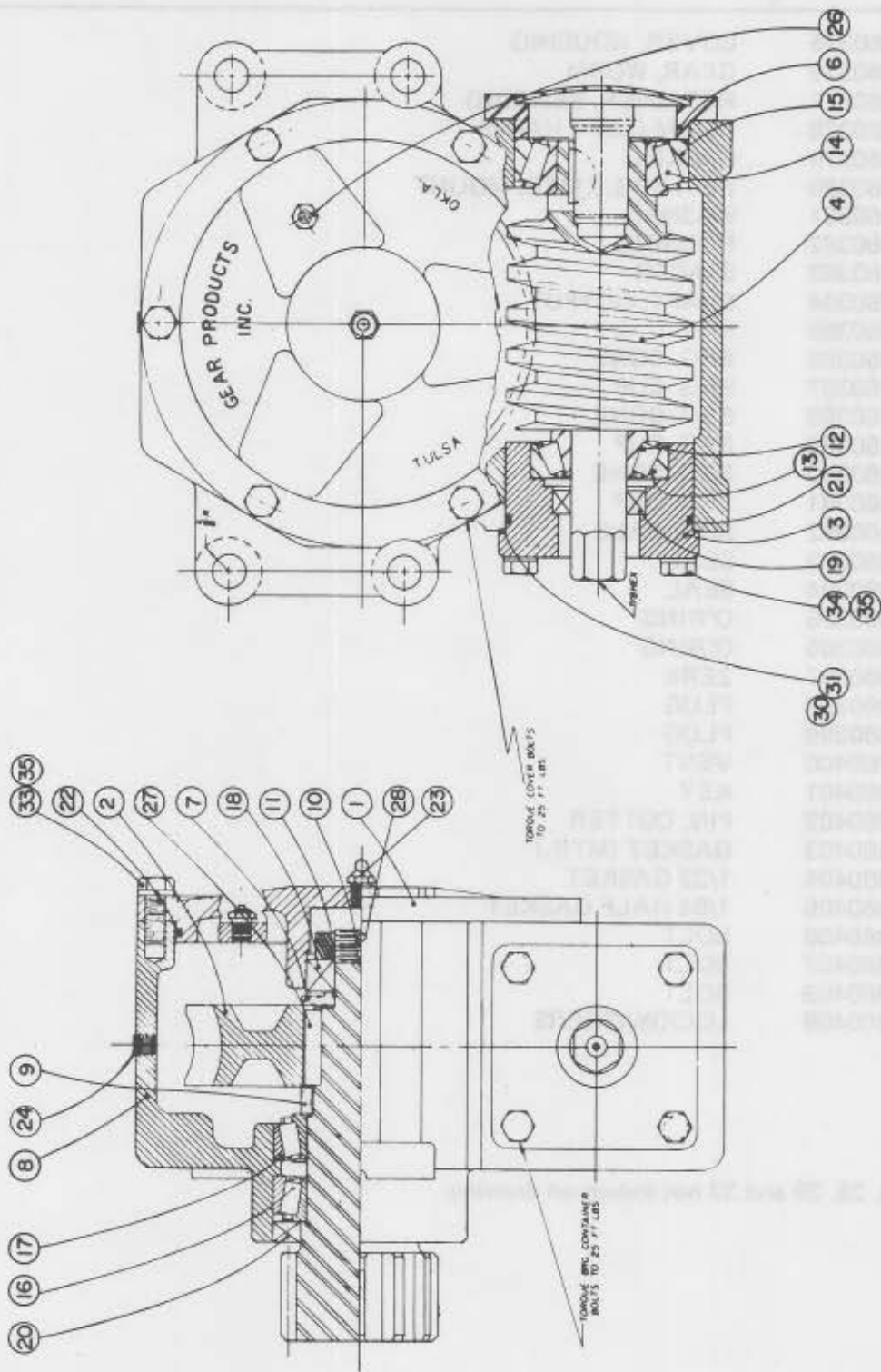
ITEM	QTY.	PART NO.	DESCRIPTION
53	1	360167	PAD, RETAINER - LOWER
54	1	360204	RETAINER, INNER BOOM
55	2	005901	SCREW, HX. HD. 1/4 NC X 1/2
56	1	360031	KIT, SHIP LOOSE
57	2	360038	INDICATOR, ANGLE
58	2	016300	NUT, HX. LK. 1/4 NC
59	1	360207	RETAINER, ECCENTRIC RING
60	1	007402	SCREW, HX. HD. 5/16 NC X 5/8 G5
61	1	020600	WASHER, SP. LK. 5/16"
62	4	015104	SCREW, HX. 7/8 NF X 5" G5
63	4	022200	LOCKWASHER, 7/8
64	4	018900	NUT, HX. 7/8 NF
65	1	800657-009	CONDUCTOR, POWER
66	1	360032	KIT, DECAL
67	3	002615	SCREW, 1/4-20 X 3/8 S.T. TYPE F

GENERAL ASSEMBLY – 5005H – AW-360001 POWER EXTENSION

ITEM	QTY.	PART NO.	DESCRIPTION
1	1	360127	BASE PLATE ASSEMBLY
2	1	360100	SIDE PLATE FABRICATION
3	1	360163	BEARING, ROTATION
4	1	360135	BOOM, LOWER
5	1	360146	BOOM, INNER
6	1	360099	GEAR BOX, ROTATION
7	1	360198	ACTUATOR, HOIST
8	1	330200	MOTOR, HYD. (ROTATION)
9	1	360199	MOTOR, HYD. (HOIST)
10	1	360159	BANK, VALVE (4 DIRECTIONAL)
11	1	360158	CYLINDER, BOOM - LIFT
12	1	360023	PENDANT ASSEMBLY
13	1	360208	DRUM, HOIST
14	1	360027	BLOCK, TRAVELING
15	1	360170	COVER, VALVE
16	1	800400-001	KEYSTOCK, 5/16"
17	1	360155	CABLE ASSEMBLY 5/16" (STD.)
18	2	360205	SHEAVE ASSEMBLY
19	1	360162	RING, ECCENTRIC
20	1	360115	PIN, PEDESTAL / BOOM
21	1	360117	PIN, BOOM / CYLINDER
22	1	360113	PIN, PEDESTAL / CYLINDER
23	2	400500	BEARING
24	2	330468	COLLAR, SPLIT-LOCK
25	3	360123	PIN, SPRING
26	38	012199	SCREW, HX.HD. 5/8 NC X 1-3/4 G5
27	38	023902	WASHER, FL. 5/8 HARDENED
28	4	006205	SCREW, SC. HD. 5/8 NC X 1-1/4 G5
29	4	008702	SCREW, HX. HD. 3/8 NC X 1-1/4 G5
30	4	005604	SCREW, HX. HD. 1/4 NC X 1" G5
31	6	020200	WASHER, SP.LK. 1/4
32	1	360126	PIN, CROWN
33	1	360124	PIN, HITCH
34	2	013506	SCREW, HX. HD. 5/8 NF X 2-1/4 G5
35	1	634000	GUARD, PENDANT
36	3	002608	SCREW, 1/4-20 X 3/4 S.T. TYPE F
37	2	018300	NUT, HX. LK. 5/8
38	4	015900	NUT, 1/4 NCCP
39	8	021100	WASHER, SP. LK. 3/8
40	4	008601	SCREW, HX. HD. 3/8NC X 7/8" G5
41	2	010201	SCREW, HX. HD. 1/2" NC X 1-1/2 G5
42	4	021500	WASHER, SP. LK. 1/2"
43	2	011510	SCREW, HX. HD. 1/2 NC X 1-1/4 G5
44	3	360054	ADAPTER, ST. 1/2 NPT - 3/4 JIC
45	1	551215	ADAPTER, ST. 1/2 NPT - 7/8 JIC
46	1	360121	PIN, EXT. CYL. UPPER BOOM
47	1	360026	HYDRAULIC ASSEMBLY
48	1	360025	ELECTRICAL ASSEMBLY
49	1	663300	MOUNT, CABLE TIE
50	1	663100	TIE, CABLE
51	3	239000	ZERK, GREASE
52	1	360165	PAD, RETAINER

GENERAL ASSEMBLY - 5005H - AW-360001 POWER EXTENSION

ITEM	QTY.	PART NO.	DESCRIPTION
53	1	360167	PAD, RETAINER - LOWER
54	1	360204	RETAINER, INNER BOOM
55	2	005901	SCREW, HX. HD. 1/4 NC X 1/2
56	1	360031	KIT, SHIP LOOSE
57	2	360038	INDICATOR, ANGLE
58	2	016300	NUT, HX. LK. 1/4 NC
59	1	360207	RETAINER, ECCENTRIC RING
60	1	007402	SCREW, HX. HD. 5/16 NC X 5/8 G5
61	1	020600	WASHER, SP. LK. 5/16"
62	1	800657-009	CONDUCTOR, POWER
63	4	015104	SCREW, HX. 7/8 NF X 5" G5
64	4	022200	LOCKWASHER, 7/8
65	4	018900	NUT, HX. 7/8 NF
66	1	360152	CYLINDER, BOOM EXT.
67	4	360122	RING, RETAINING
68	1	360120	PIN, EXT. CYL. LOWER
69	1	360032	KIT, DECAL
70	3	002615	SCREW, 1/4-20 X 3/8 S.T. TYPE F



AUTO CRANE CO. - AW-360099

AUTO CRANE

ROTATION GEAR BOX – 5005H – AW-360099

ITEM	QTY.	PART NO.	DESCRIPTION
1	1	360375	COVER, HOUSING
2	1	360376	GEAR, WORM
3	1	360377	RETAINER, BEARING
4	1	360378	WORM (LEFT HAND)
5	A/R	360379	GASKET
6	1	360380	RET. BRG. / MTG. MOUNT
7	1	360381	WASHER
8	1	360382	HOUSING
9	1	360383	SPACER
10	1	360384	SHAFT, OUTPUT
11	1	360385	NUT
12	1	360386	BRG. CONE
13	1	360387	BRG. CUP
14	1	360388	BRG. CONE
15	1	360389	BRG. CUP
16	2	360390	BRG. CONE
17	2	360391	BRG. CUP
18	1	360392	BRG. BALL
19	1	360393	SEAL
20	1	360394	SEAL
21	1	360395	O'RING
22	1	360396	O'RING
23	1	360397	ZERK
24	1	360398	PLUG
25	1	360399	PLUG
26	1	360400	VENT
27	2	360401	KEY
28	1	360402	PIN, COTTER
29	1	360403	GASKET (MTR.)
30	1	360404	1/32 GASKET
31	1	360405	1/64 HALF GASKET
32	2	360406	BOLT
33	6	360407	BOLT
34	4	360408	BOLT
35	10	360409	LOCKWASHERS

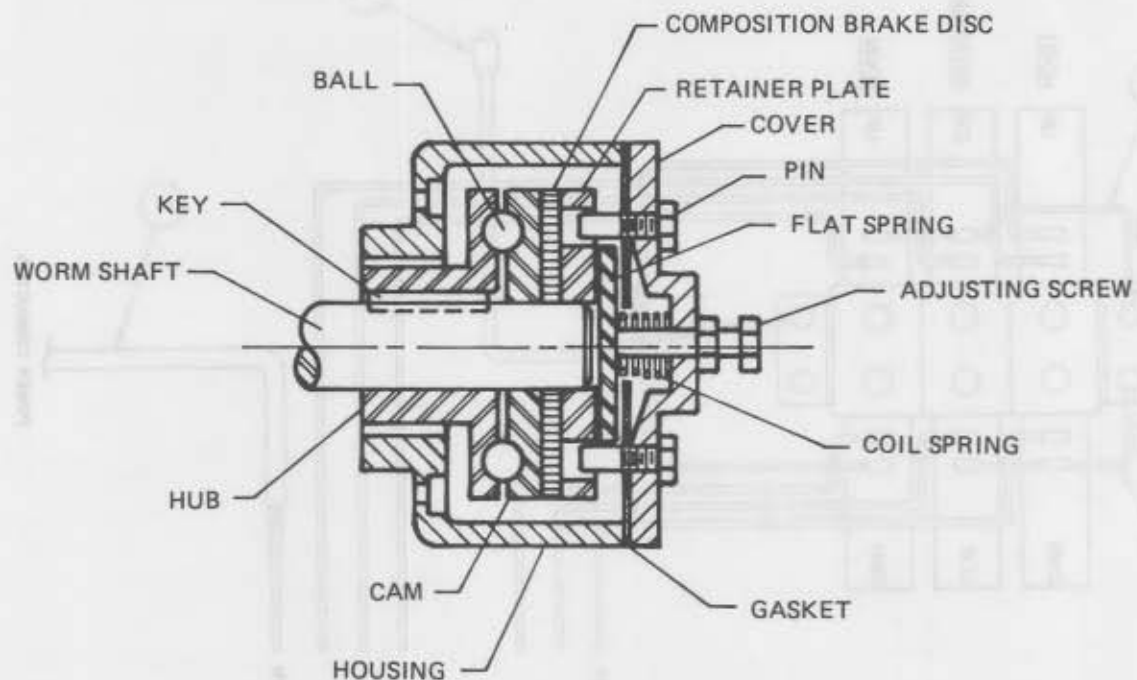
NOTE: ITEMS 5, 25, 29 and 32 not shown on drawing.

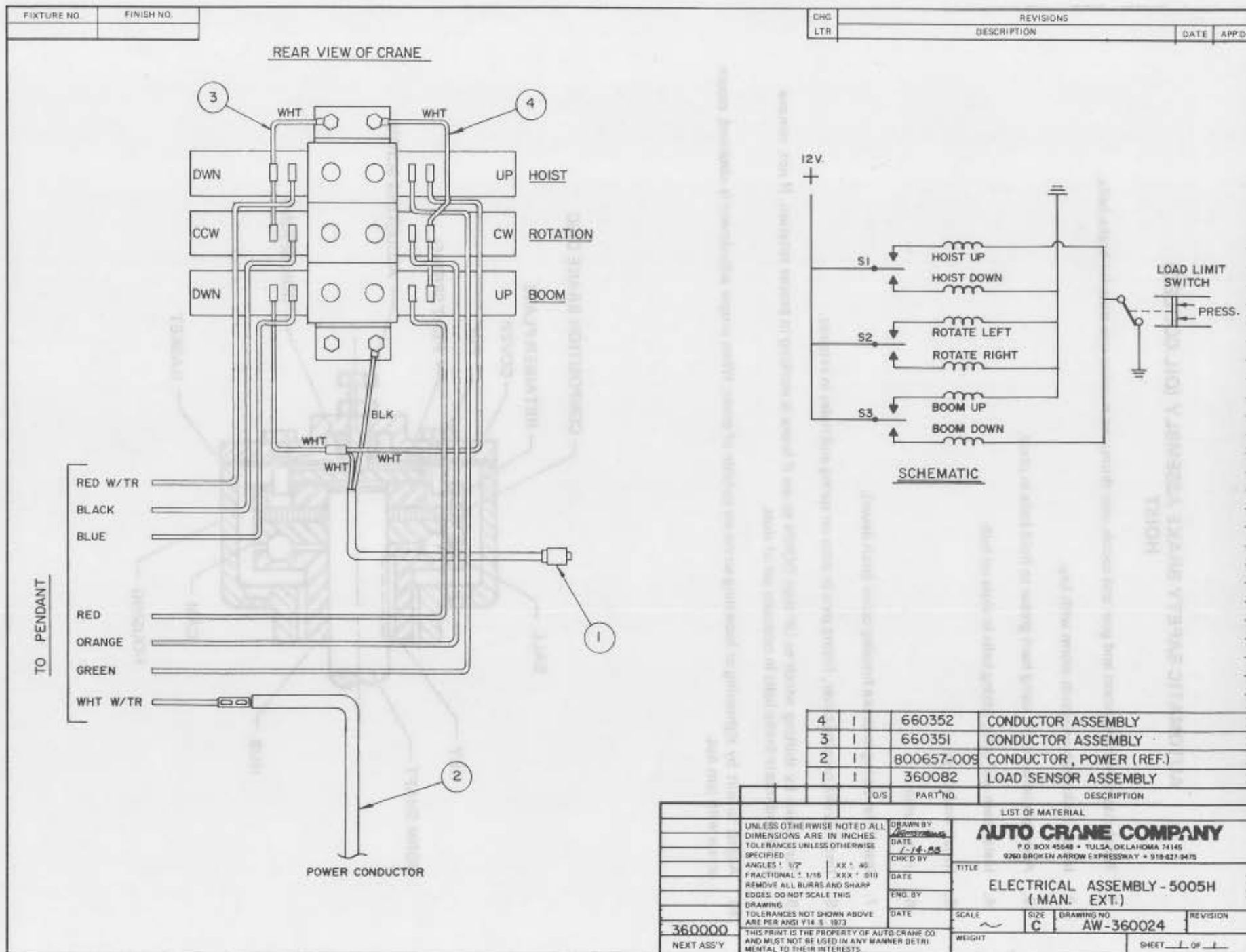
ACTUATOR, HOIST - 5005H - AW-360198

ITEM	QTY.	PART NO.	DESCRIPTION
1	1	360330	ADAPTER
2	1	360331	CAM PLATE
3	1	360332	COUPLING
4	1	360333	COVER, WORM GEAR
5	1	360334	COVER, WORM BRAKE
6	1	360335	GEAR, R.H.
7	1	360336	BRAKE HOUSING
8	1	360337	HOUSING, GEAR
9	1	360338	HUB, GEAR
10	1	360339	HUB, WORM BRAKE
11	2	360340	KEY, RD. ENDS
12	2	360341	KEY, RD. ENDS
13	1	(Ref) 800400-001	KEY, 5/16" (Ref. for Drum)
14	1	360342	RETAINER
15	1	360343	SHAFT
16	1	360344	WORM, R.H.
17	2	360345	BALL, POPPET
18	2	360346	BEARING, BALL
19	1	360347	BUSHING
20	1	360348	BUSHING
21	1	360349	COVER, MOTOR (Ref. For Shipping)
22	8	005500	CAPSCREW, 1/4NC X 3/4 G5
23	4	005604	CAPSCREW, 1/4NC X 1
24	2	360350	CAPSCREW, 1/4NC X 3/4 C.P.
25	6	007807	CAPSCREW, 5/16NC X 3/4 G5
26	1	360351	CAPSCREW, 3/8NC X 1-1/2 G2
27	2	(Ref) 010202	CAPSCREW, 1/2NC X 1" (For Shipping)
28	4	005610	CAPSCREW, 1/4NC X 3/4 S.HD.
29	4	360352	CAPSCREW, 1/4NC X 1-3/4 S.HD. L/W
30	1	360353	NUT, 3/8NC HX. JAM
31	4	360354	LOCKWASHER, 1/4 MED. SECT. C.P.
32	2	360355	WASHER - FLAT, 1/4 ALUM.
33	1	360356	WASHER - FLAT, 3/8 ALUM.
34	1	360357	GASKET
35	2	360358	GASKET
36	1	360359	GASKET
37	1	360360	RELIEF FITTING
38	1	360361	REDUCER
39	2	360362	PIPE PLUG
40	1	360363	SPIROL PIN
41	1	360364	PLATE, THRUST
42	1	360356	OIL SEAL
43	1	360366	OIL SEAL
44	1	360367	SPRING, FLAT
45	1	360368	SPRING
46	1	360369	THRUST WASHER

AUTOMATIC SAFETY BRAKE ASSEMBLY (OIL COOLED) HOIST

1. Winch has right hand worm and gear and spools over drum; use number one slots for brake balls.
2. Install brake hub on winch worm with key.
3. Assemble balls in cam using hard grease to hold balls in place.
4. Install cam and balls, fitting balls in slots on hub.
5. Install brake disc.
6. Install retainer.
7. Install flat spring in brake housing cover (arch down).
8. Install brake housing cover, fitting pins in slots on spring and holes in retainer.
9. Test brake by shifting winch to UP then DOWN to see if brake is working in proper rotation. If not, remove brake and locate brake balls in opposite set of slots.
10. Adjust to suit by tightening or loosening screw on outside of cover. When proper adjustment is obtained, secure screw with jam nut.

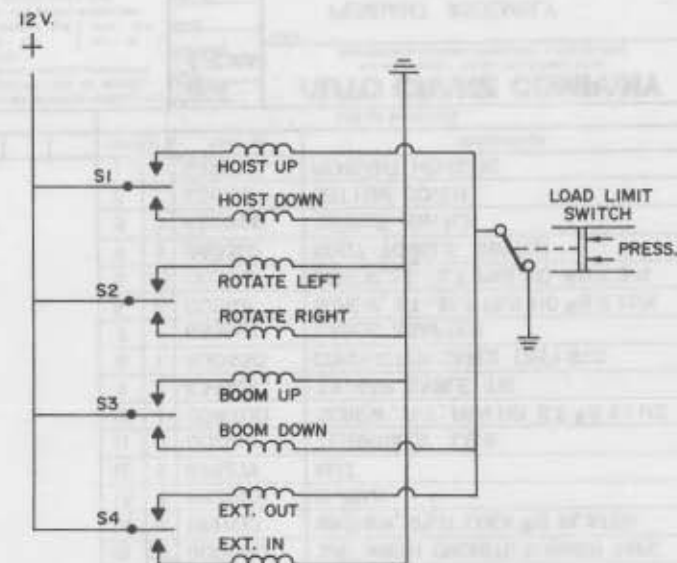
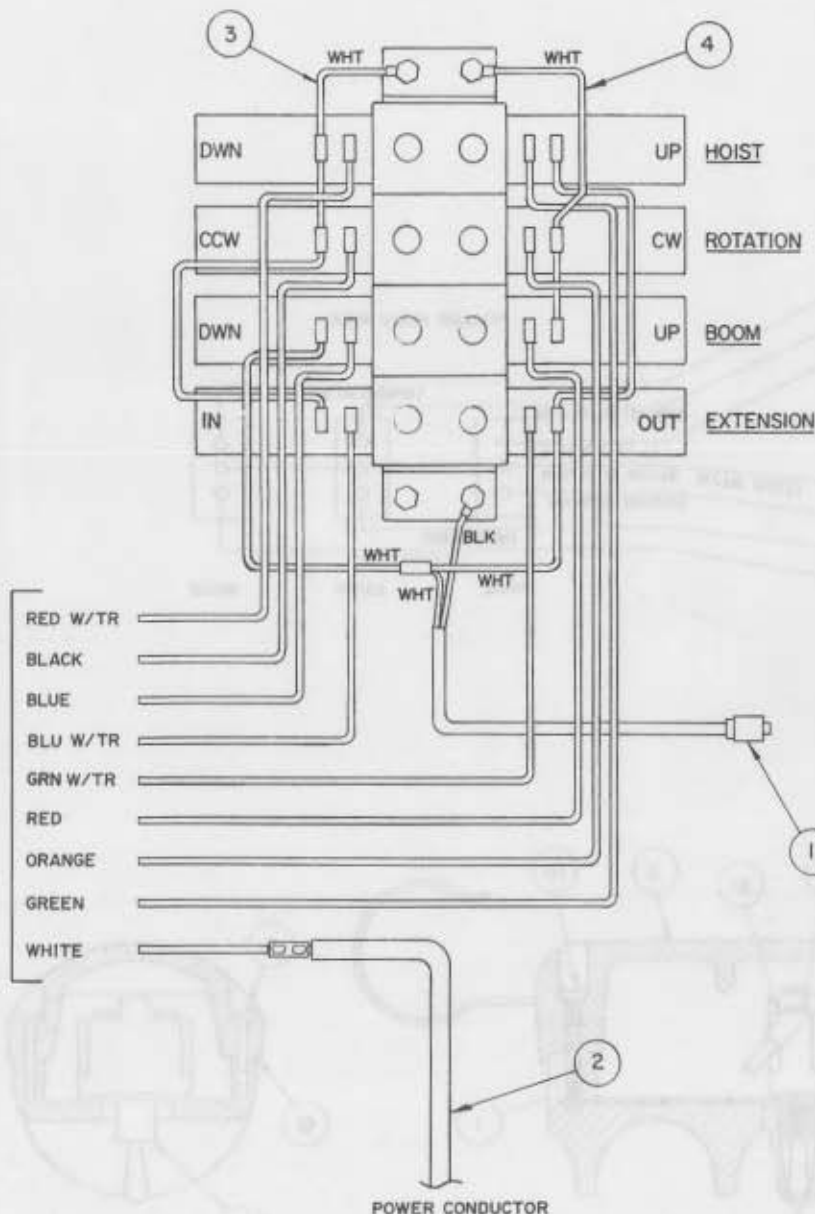




FIXTURE NO.	FINISH NO.

CHG LTR	REVISIONS		DATE	APP'D
	DESCRIPTION			

REAR VIEW OF CRANE

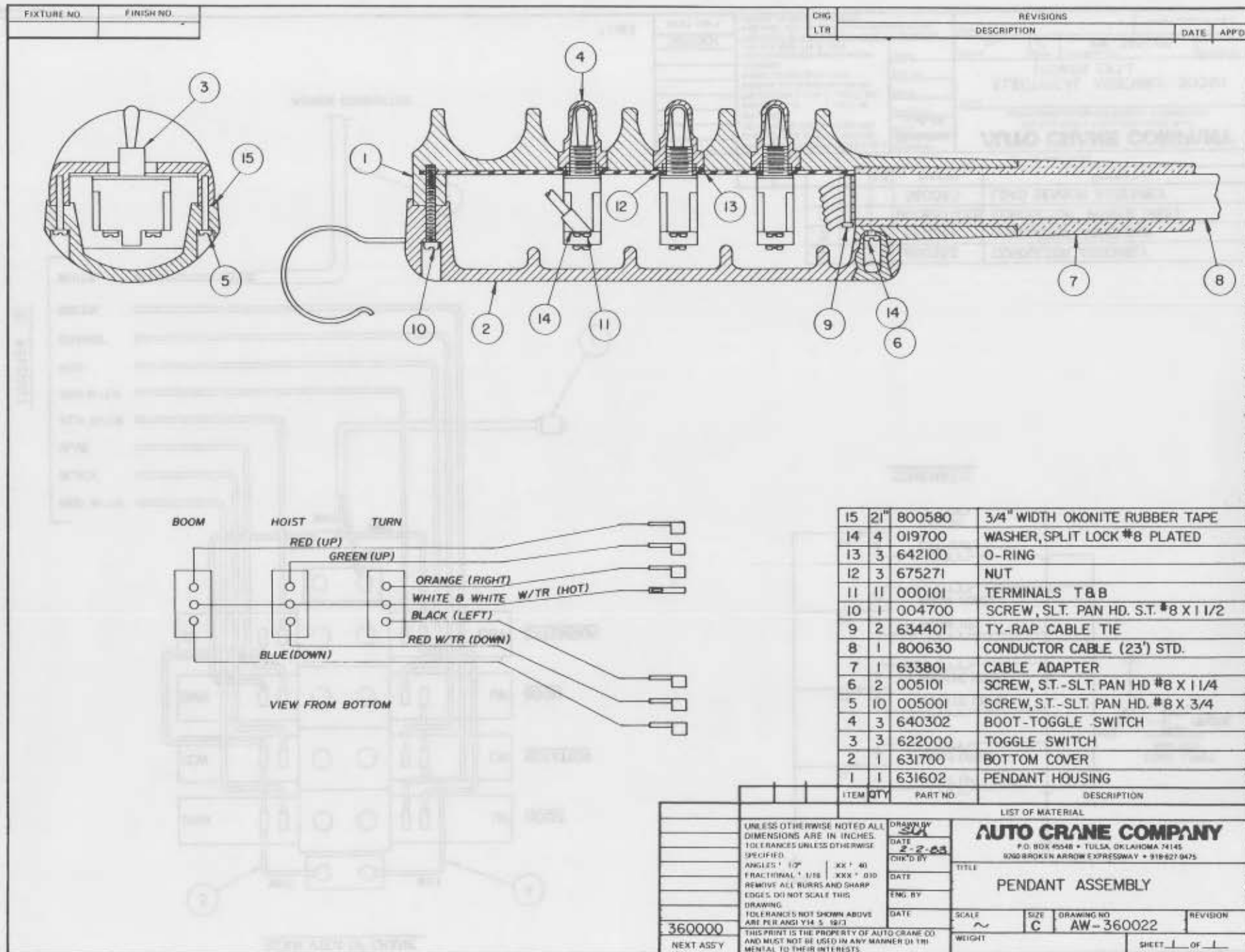


SCHEMATIC

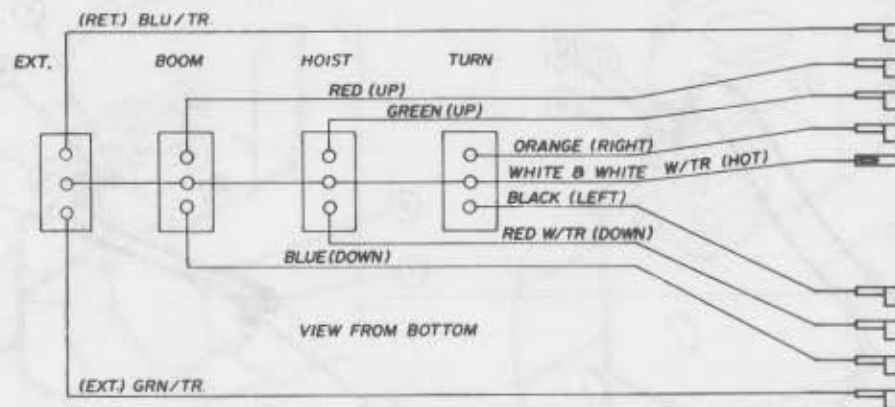
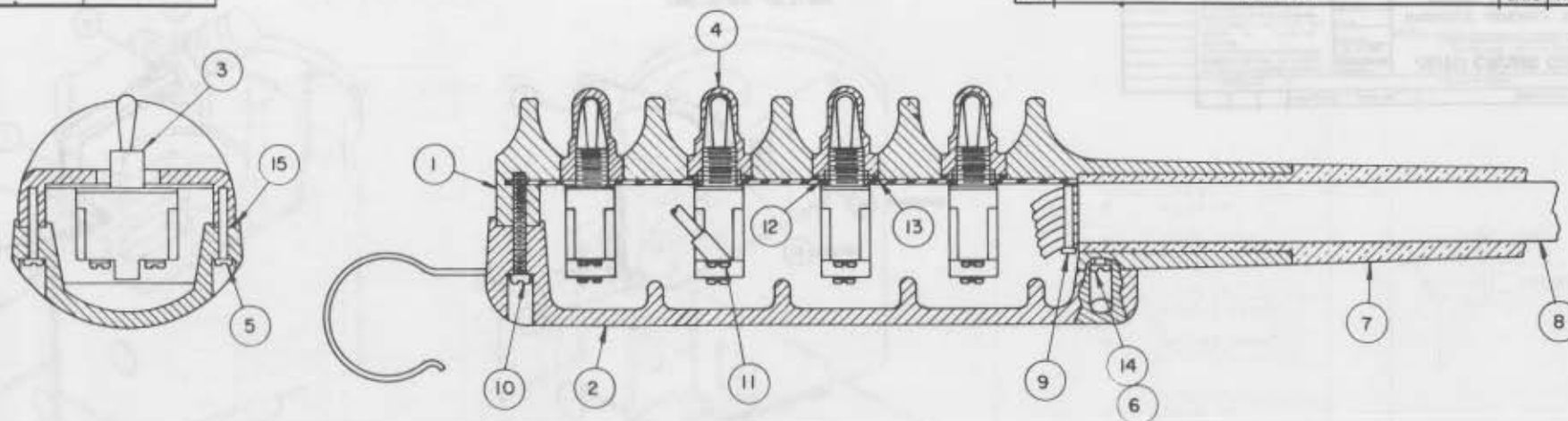
4	1	660353	CONDUCTOR ASSEMBLY
3	1	660351	CONDUCTOR ASSEMBLY
2	1	800657-009	CONDUCTOR, POWER (REF.)
1	1	360083	LOAD SENSOR ASSEMBLY

D/S		PART NO	DESCRIPTION
LIST OF MATERIAL			
AUTO CRANE COMPANY P.O. BOX 45548 • TULSA, OKLAHOMA 74148 8260 BROOKER ARROW EXPRESSWAY • 918 627-9475			
UNLESS OTHERWISE NOTED ALL DIMENSIONS ARE IN INCHES. TOLERANCES UNLESS OTHERWISE SPECIFIED: ANGLES ± 1/2° FRACTIONAL ± 1/16" XXX ± .010 REMOVE ALL BURRS AND SHARP EDGES. DO NOT SCALE THIS DRAWING. TOLERANCES NOT SHOWN ABOVE ARE PER ANSI Y14.5-1973. THIS PRINT IS THE PROPERTY OF AUTO CRANE CO. AND MUST NOT BE USED IN ANY MANNER DETRIMENTAL TO THEIR INTERESTS.		DRAWN BY DATE CHK'D BY DATE ENG. BY DATE	TITLE ELECTRICAL ASSEMBLY - 5005H (POWER EXT.) SCALE C DRAWING NO. AW-360025 REVISION SHEET 1 OF 1
360001	NEXT ASS'Y	WEIGHT	

11/83



FIXTURE NO.	FINISH NO.	CHG	REVISIONS	DATE	APP'D
		LTR	DESCRIPTION		



15	21"	800580	3/4" WIDTH OKONITE RUBBER TAPE
14	4	019700	WASHER, SPLIT LOCK #8 PLATED
13	4	642100	O-RING
12	4	675271	NUT
11	15	000101	TERMINALS T & B
10	1	004700	SCREW, SLT. PAN HD. S.T. #8 X 1 1/2"
9	2	634401	TY-RAP CABLE TIE
8	1	800631	CONDUCTOR CABLE (23') STD.
7	1	633801	CABLE ADAPTER
6	2	005101	SCREW, S.T.-SLT. PAN HD #8 X 1 1/4
5	10	005001	SCREW, S.T.-SLT. PAN HD. #8 X 3/4
4	4	640302	BOOT-TOGGLE SWITCH
3	4	622000	TOGGLE SWITCH
2	1	631700	BOTTOM COVER
1	1	631602	PENDANT HOUSING

ITEM	QTY	PART NO.	DESCRIPTION
LIST OF MATERIAL			
UNLESS OTHERWISE NOTED ALL DIMENSIONS ARE IN INCHES. TOLERANCES UNLESS OTHERWISE SPECIFIED.			
DRAWN BY: J.A.			
DATE: 2-7-65			
CHECKED BY:			
DATE:			
ENG. BY:			
DATE:			
TOLERANCES NOT SHOWN ABOVE ARE PER ANSI Y14.5-1973			
THIS PRINT IS THE PROPERTY OF AUTO CRANE CO. AND MUST NOT BE USED IN ANY MANNER DETRIMENTAL TO THEIR INTERESTS.			
360001		SCALE: ~	SIZE: C
NEXT ASSY		DRAWING NO: AW-360023	REVISION
		WEIGHT	SHEET 1 OF 1

11/83



NOTES:
 1 VALVE BANK ROTATED FOR CLARITY OF ASSEMBLY. TYPICAL ALL VIEWS.
 2 WIRE CONNECTED TO ELECTRICAL ASSEMBLY. (AW-360024)

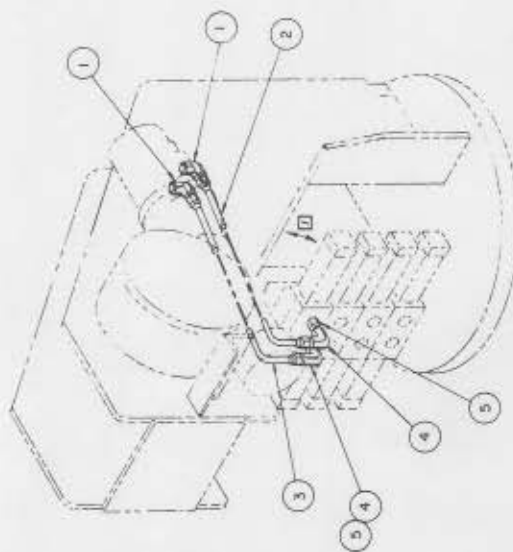
[illegible]

HYDRAULIC ASSEMBLY MAN. EXT. - 5005H - AW-360021

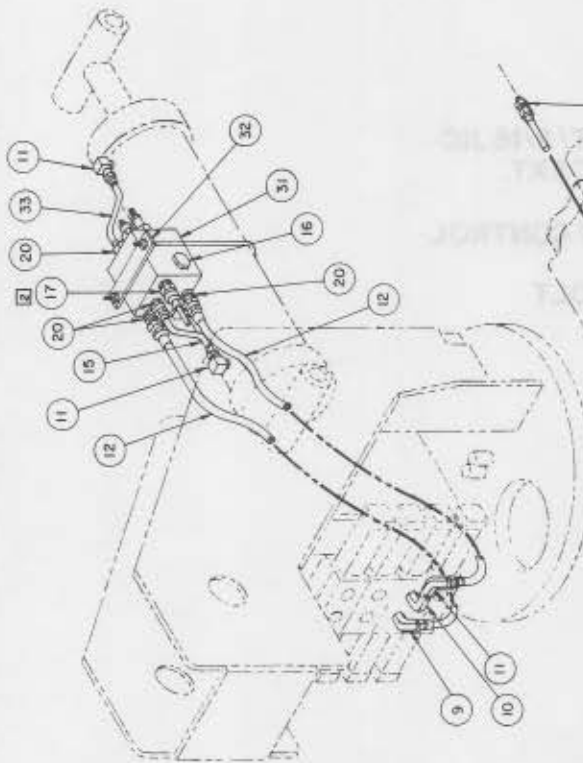
ITEM	QTY.	PART NO.	DESCRIPTION
1	3	360043	ELL, 1/2 P. EXT. / 3/4 JIC EXT.
2	1	360062	TUBE ASSEMBLY
3	1	360063	TUBE ASSEMBLY
4	2	360049	ELL, 3/4 JIC SWIVEL/FLARE
5	5	360040	ADAPTER, ST. 3/8 P. EXT. / 3/4 JIC EXT.
6	1	360064	TUBE ASSEMBLY
7	1	360065	TUBE ASSEMBLY
8	1	360045	ELL, 1/2 P.EXT. / 3/4 JIC EXT.
9	1	360046	ELL, 3/8 P. EXT. / 9/16 JIC EXT.
10	2	360048	ELL, 3/8 P.M. / 3/8 P.F.
11	3	200892	ELL, 3/8 P.M. / 9/16 JIC
12	2	360076	HOSE ASSEMBLY
13	1	360060	TUBE ASSEMBLY
14	2	360073	TUBE ASSEMBLY
15	1	000209	PLUG, PIPE 1/4-18
16	4	360041	ADAPTER, ST. 1/4 P.EXT/ 9/16 JIC
17	1	360044	ELL, 3/8 P. EXT./ 3/4 JIC EXT.
18	1	360072	TUBE ASSEMBLY
19	1	360074	VALVE, C' BAL & FLOW CONTROL
20	1	360082	LOAD SENSOR (Ref.)
21	1	360097	CLAMP ASSEMBLY U-BOLT
22	1	360098	HOSE ASSEMBLY

FIGURE NO. PART NO.

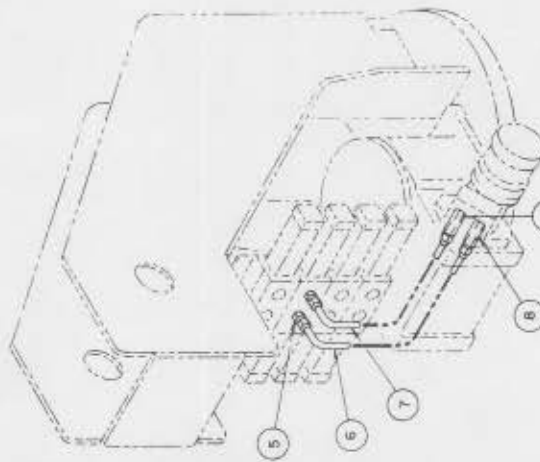
REV. NO. DESCRIPTION DATE APP'D



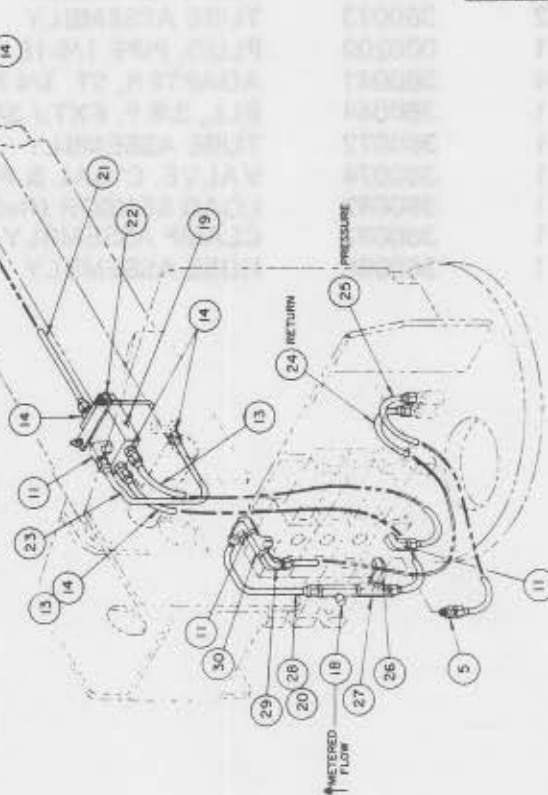
HOIST



BOOM-UP



ROTATION



POWER EXTENSION

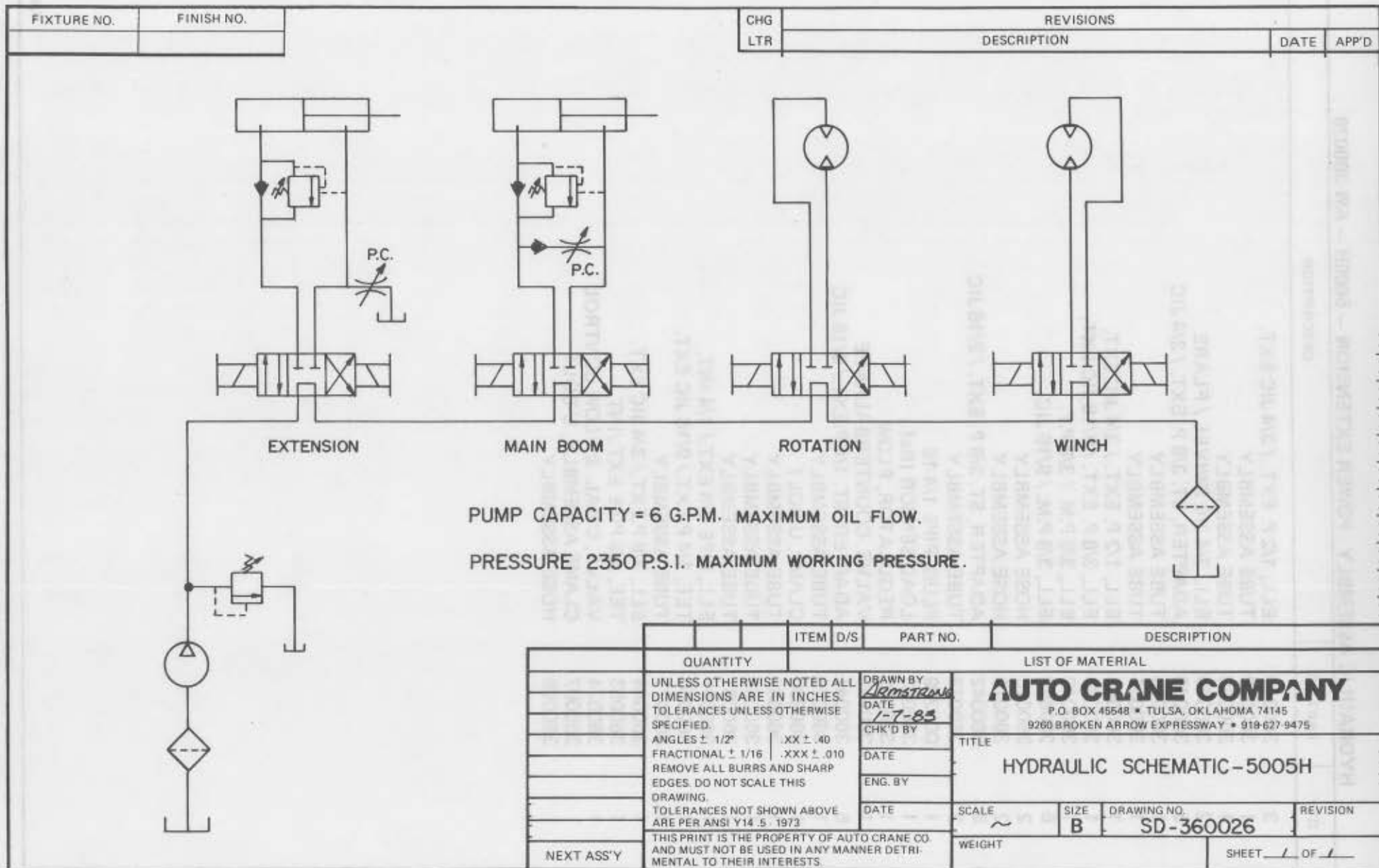
NOTES:
☐ VALVE BANK ROTATED FOR CLARITY OF ASSEMBLY. TYPICAL ALL VIEWS.
☒ WIRE CONNECTED TO ELECTRICAL ASSEMBLY. (AW-360025)

QUANTITY	ITEM	DESCRIPTION	PART NO.
1	AW-360001	HYDRAULIC ASSEMBLY, 5000SH	AW-360001
1	AW-360025	WIRE CONNECTED TO ELECTRICAL ASSEMBLY	AW-360025
1	AW-360026	WIRE CONNECTED TO ELECTRICAL ASSEMBLY	AW-360026
1	AW-360027	WIRE CONNECTED TO ELECTRICAL ASSEMBLY	AW-360027
1	AW-360028	WIRE CONNECTED TO ELECTRICAL ASSEMBLY	AW-360028
1	AW-360029	WIRE CONNECTED TO ELECTRICAL ASSEMBLY	AW-360029
1	AW-360030	WIRE CONNECTED TO ELECTRICAL ASSEMBLY	AW-360030
1	AW-360031	WIRE CONNECTED TO ELECTRICAL ASSEMBLY	AW-360031
1	AW-360032	WIRE CONNECTED TO ELECTRICAL ASSEMBLY	AW-360032
1	AW-360033	WIRE CONNECTED TO ELECTRICAL ASSEMBLY	AW-360033
1	AW-360034	WIRE CONNECTED TO ELECTRICAL ASSEMBLY	AW-360034
1	AW-360035	WIRE CONNECTED TO ELECTRICAL ASSEMBLY	AW-360035
1	AW-360036	WIRE CONNECTED TO ELECTRICAL ASSEMBLY	AW-360036
1	AW-360037	WIRE CONNECTED TO ELECTRICAL ASSEMBLY	AW-360037
1	AW-360038	WIRE CONNECTED TO ELECTRICAL ASSEMBLY	AW-360038
1	AW-360039	WIRE CONNECTED TO ELECTRICAL ASSEMBLY	AW-360039
1	AW-360040	WIRE CONNECTED TO ELECTRICAL ASSEMBLY	AW-360040
1	AW-360041	WIRE CONNECTED TO ELECTRICAL ASSEMBLY	AW-360041
1	AW-360042	WIRE CONNECTED TO ELECTRICAL ASSEMBLY	AW-360042
1	AW-360043	WIRE CONNECTED TO ELECTRICAL ASSEMBLY	AW-360043
1	AW-360044	WIRE CONNECTED TO ELECTRICAL ASSEMBLY	AW-360044
1	AW-360045	WIRE CONNECTED TO ELECTRICAL ASSEMBLY	AW-360045
1	AW-360046	WIRE CONNECTED TO ELECTRICAL ASSEMBLY	AW-360046
1	AW-360047	WIRE CONNECTED TO ELECTRICAL ASSEMBLY	AW-360047
1	AW-360048	WIRE CONNECTED TO ELECTRICAL ASSEMBLY	AW-360048
1	AW-360049	WIRE CONNECTED TO ELECTRICAL ASSEMBLY	AW-360049
1	AW-360050	WIRE CONNECTED TO ELECTRICAL ASSEMBLY	AW-360050
1	AW-360051	WIRE CONNECTED TO ELECTRICAL ASSEMBLY	AW-360051
1	AW-360052	WIRE CONNECTED TO ELECTRICAL ASSEMBLY	AW-360052
1	AW-360053	WIRE CONNECTED TO ELECTRICAL ASSEMBLY	AW-360053
1	AW-360054	WIRE CONNECTED TO ELECTRICAL ASSEMBLY	AW-360054
1	AW-360055	WIRE CONNECTED TO ELECTRICAL ASSEMBLY	AW-360055
1	AW-360056	WIRE CONNECTED TO ELECTRICAL ASSEMBLY	AW-360056
1	AW-360057	WIRE CONNECTED TO ELECTRICAL ASSEMBLY	AW-360057
1	AW-360058	WIRE CONNECTED TO ELECTRICAL ASSEMBLY	AW-360058
1	AW-360059	WIRE CONNECTED TO ELECTRICAL ASSEMBLY	AW-360059
1	AW-360060	WIRE CONNECTED TO ELECTRICAL ASSEMBLY	AW-360060
1	AW-360061	WIRE CONNECTED TO ELECTRICAL ASSEMBLY	AW-360061
1	AW-360062	WIRE CONNECTED TO ELECTRICAL ASSEMBLY	AW-360062
1	AW-360063	WIRE CONNECTED TO ELECTRICAL ASSEMBLY	AW-360063
1	AW-360064	WIRE CONNECTED TO ELECTRICAL ASSEMBLY	AW-360064
1	AW-360065	WIRE CONNECTED TO ELECTRICAL ASSEMBLY	AW-360065
1	AW-360066	WIRE CONNECTED TO ELECTRICAL ASSEMBLY	AW-360066
1	AW-360067	WIRE CONNECTED TO ELECTRICAL ASSEMBLY	AW-360067
1	AW-360068	WIRE CONNECTED TO ELECTRICAL ASSEMBLY	AW-360068
1	AW-360069	WIRE CONNECTED TO ELECTRICAL ASSEMBLY	AW-360069
1	AW-360070	WIRE CONNECTED TO ELECTRICAL ASSEMBLY	AW-360070
1	AW-360071	WIRE CONNECTED TO ELECTRICAL ASSEMBLY	AW-360071
1	AW-360072	WIRE CONNECTED TO ELECTRICAL ASSEMBLY	AW-360072
1	AW-360073	WIRE CONNECTED TO ELECTRICAL ASSEMBLY	AW-360073
1	AW-360074	WIRE CONNECTED TO ELECTRICAL ASSEMBLY	AW-360074
1	AW-360075	WIRE CONNECTED TO ELECTRICAL ASSEMBLY	AW-360075
1	AW-360076	WIRE CONNECTED TO ELECTRICAL ASSEMBLY	AW-360076
1	AW-360077	WIRE CONNECTED TO ELECTRICAL ASSEMBLY	AW-360077
1	AW-360078	WIRE CONNECTED TO ELECTRICAL ASSEMBLY	AW-360078
1	AW-360079	WIRE CONNECTED TO ELECTRICAL ASSEMBLY	AW-360079
1	AW-360080	WIRE CONNECTED TO ELECTRICAL ASSEMBLY	AW-360080
1	AW-360081	WIRE CONNECTED TO ELECTRICAL ASSEMBLY	AW-360081
1	AW-360082	WIRE CONNECTED TO ELECTRICAL ASSEMBLY	AW-360082
1	AW-360083	WIRE CONNECTED TO ELECTRICAL ASSEMBLY	AW-360083
1	AW-360084	WIRE CONNECTED TO ELECTRICAL ASSEMBLY	AW-360084
1	AW-360085	WIRE CONNECTED TO ELECTRICAL ASSEMBLY	AW-360085
1	AW-360086	WIRE CONNECTED TO ELECTRICAL ASSEMBLY	AW-360086
1	AW-360087	WIRE CONNECTED TO ELECTRICAL ASSEMBLY	AW-360087
1	AW-360088	WIRE CONNECTED TO ELECTRICAL ASSEMBLY	AW-360088
1	AW-360089	WIRE CONNECTED TO ELECTRICAL ASSEMBLY	AW-360089
1	AW-360090	WIRE CONNECTED TO ELECTRICAL ASSEMBLY	AW-360090
1	AW-360091	WIRE CONNECTED TO ELECTRICAL ASSEMBLY	AW-360091
1	AW-360092	WIRE CONNECTED TO ELECTRICAL ASSEMBLY	AW-360092
1	AW-360093	WIRE CONNECTED TO ELECTRICAL ASSEMBLY	AW-360093
1	AW-360094	WIRE CONNECTED TO ELECTRICAL ASSEMBLY	AW-360094
1	AW-360095	WIRE CONNECTED TO ELECTRICAL ASSEMBLY	AW-360095
1	AW-360096	WIRE CONNECTED TO ELECTRICAL ASSEMBLY	AW-360096
1	AW-360097	WIRE CONNECTED TO ELECTRICAL ASSEMBLY	AW-360097
1	AW-360098	WIRE CONNECTED TO ELECTRICAL ASSEMBLY	AW-360098
1	AW-360099	WIRE CONNECTED TO ELECTRICAL ASSEMBLY	AW-360099
1	AW-360100	WIRE CONNECTED TO ELECTRICAL ASSEMBLY	AW-360100

3/84

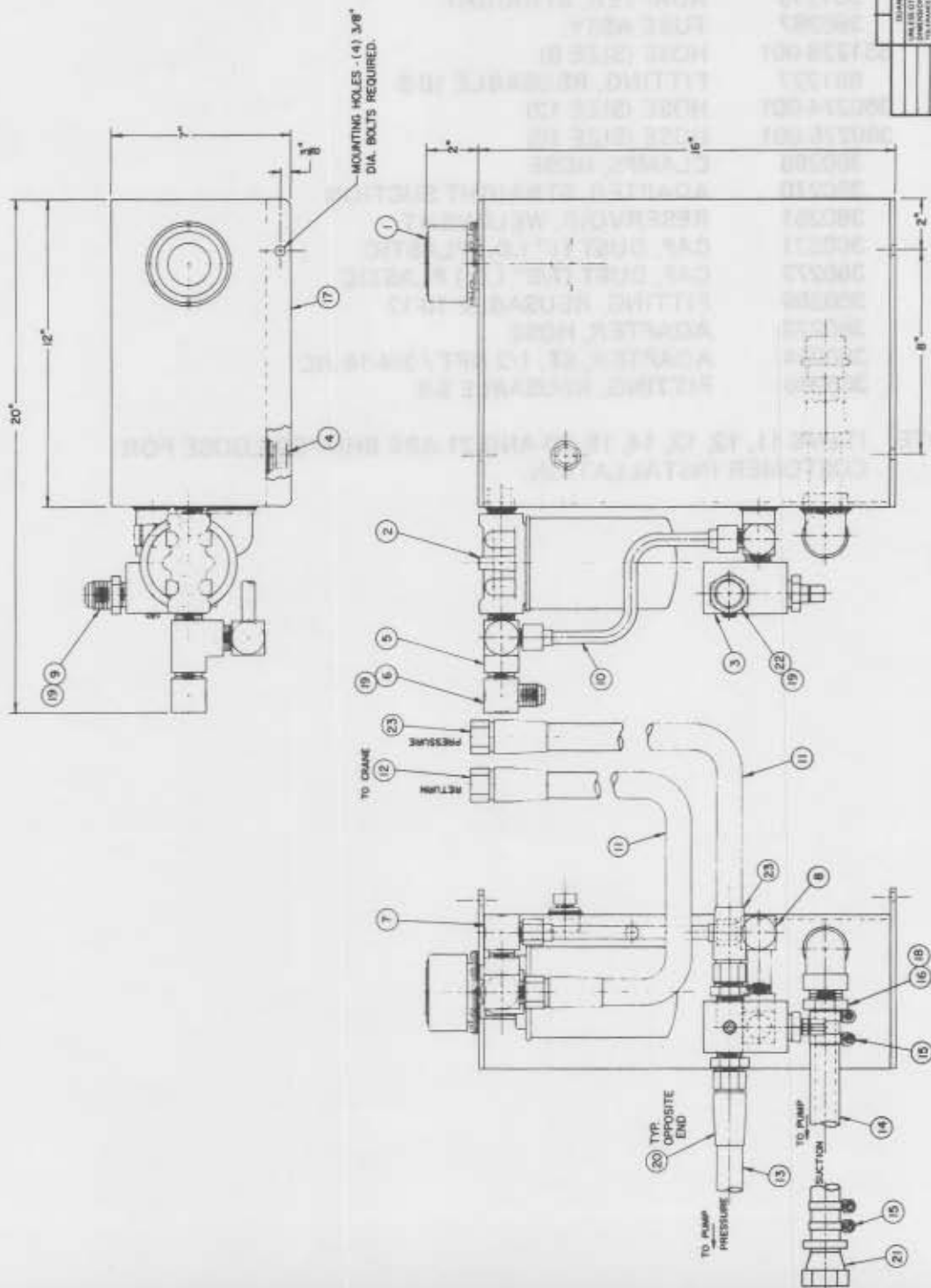
HYDRAULIC ASSEMBLY - POWER EXTENSION - 5005H - AW-360026

ITEM	QTY.	PART NO.	DESCRIPTION
1	3	360043	ELL, 1/2 P. EXT. / 3/4 JIC EXT.
2	1	360062	TUBE ASSEMBLY
3	1	360063	TUBE ASSEMBLY
4	2	360049	ELL, 3/4 JIC SWIVEL / FLARE
5	5	360040	ADAPTER, ST. 3/8 P. EXT. / 3/4 JIC
6	1	360064	TUBE ASSEMBLY
7	1	360065	TUBE ASSEMBLY
8	1	360045	ELL, 1/2 P. EXT. / 3/4 JIC EXT.
9	1	360046	ELL, 3/8 P. EXT. / 9/16 JIC EXT.
10	1	360048	ELL, 3/8 P.M. / 3/8 P.F.
11	6	200892	ELL, 3/8 P.M. / 9/16 JIC
12	2	360076	HOSE ASSEMBLY
13	2	360075	HOSE ASSEMBLY
14	5	360042	ADAPTER, ST. 3/8 P. EXT. / 9/16 JIC
15	2	360073	TUBE ASSEMBLY
16	1	000209	PLUG, PIPE 1/4-18
17	1	360083	LOAD SENSOR (Ref.)
18	1	330582	REGULATOR, FLOW
19	1	360153	VALVE, COUNTERBALANCE
20	5	360041	ADAPTER, ST. 1/4 P.EXT./ 9/16 JIC
21	1	360070	TUBE ASSEMBLY
22	1	360090	CLAMP, U-BOLT
23	1	360069	TUBE ASSEMBLY
24	1	360060	TUBE ASSEMBLY
25	1	360061	TUBE ASSEMBLY
26	1	360047	ELL, PIPE 3/8 EXT./ 1/4 INT.
27	1	360050	TEE, 1/4 P.EXT./ 9/16 JIC EXT.
28	1	360071	TUBE ASSEMBLY
29	1	360044	ELL, 3/8 P.EXT./ 3/4 JIC EXT.
30	1	360053	TEE, 3/8 PIPE EXT./INT.
31	1	360074	VALVE, C'BAL. & FLOW CONTROL
32	1	360097	CLAMP ASSEMBLY, U-BOLT
33	1	360098	HOSE ASSEMBLY



REV	DATE	APP'D
1		

REV	DATE	APP'D
1		



ITEM	QTY	DESCRIPTION
1	1	RESERVOIR ASSEMBLY
2	1	TO PUMP PRESSURE
3	1	TO PUMP PRESSURE
4	1	TO PUMP PRESSURE
5	1	TO PUMP PRESSURE
6	1	TO PUMP PRESSURE
7	1	TO PUMP PRESSURE
8	1	TO PUMP PRESSURE
9	1	TO PUMP PRESSURE
10	1	TO PUMP PRESSURE
11	1	TO PUMP PRESSURE
12	1	TO PUMP PRESSURE
13	1	TO PUMP PRESSURE
14	1	TO PUMP PRESSURE
15	1	TO PUMP PRESSURE
16	1	TO PUMP PRESSURE
17	1	TO PUMP PRESSURE
18	1	TO PUMP PRESSURE
19	1	TO PUMP PRESSURE
20	1	TO PUMP PRESSURE
21	1	TO PUMP PRESSURE
22	1	TO PUMP PRESSURE
23	1	TO PUMP PRESSURE

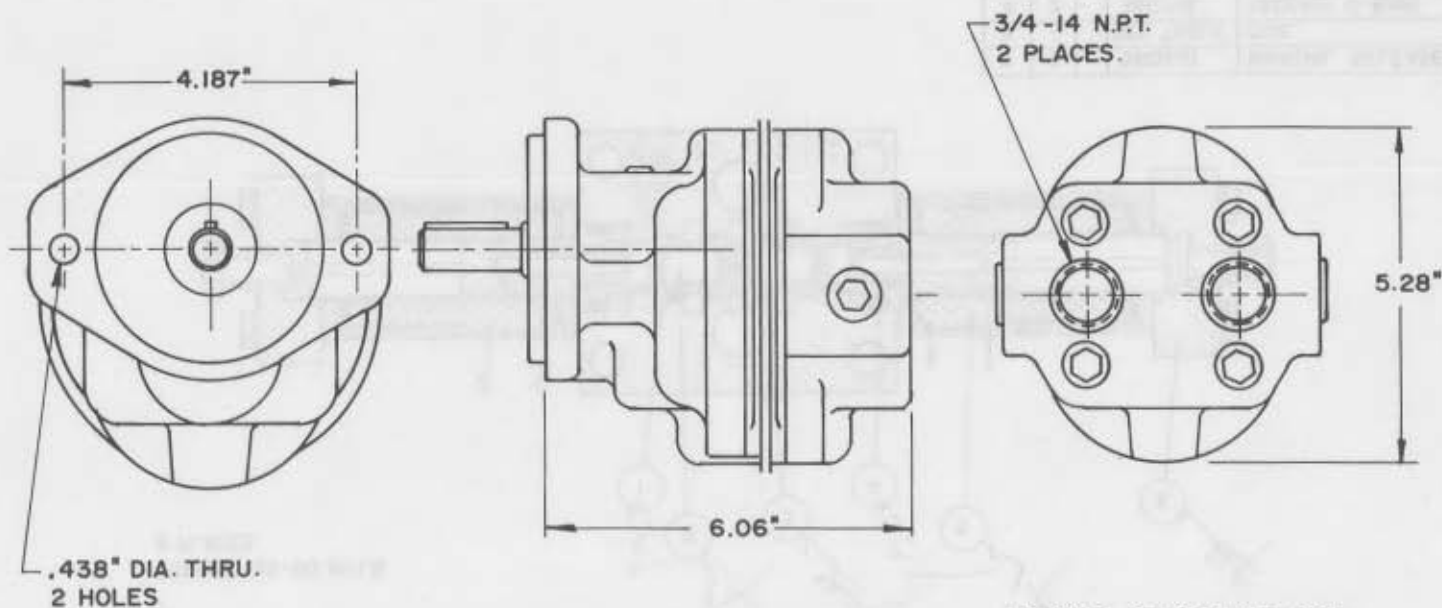
R05/84

RESERVOIR ASSEMBLY – 5005H – AW-360250

ITEM	QTY.	PART NO.	DESCRIPTION
1	1	360151	FILLER ASSY., RESERVOIR
2	1	360156	FILTER, HYD. FLUID
3	1	360157	VALVE, RELIEF (MAIN PRESSURE)
4	1	360150	PLUG, RESERVOIR SIGHT
5	1	360262	TEE
6	1	360263	ELL
7	1	551222	ELL
8	1	360264	ELL
9	1	551215	ADAPTER, STRAIGHT
10	1	360267	TUBE ASSY.
11	1	551228-001	HOSE (SIZE 8)
12	2	551227	FITTING, REUSABLE 10-8
13	1	360274-001	HOSE (SIZE 12)
14	1	360275-001	HOSE (SIZE 16)
15	4	360268	CLAMPS, HOSE
16	1	360270	ADAPTER, STRAIGHT SUCTION
17	1	360251	RESERVOIR, WELDMENT
18	1	360271	CAP, DUST (1" I.D.) PLASTIC
19	3	360272	CAP, DUST (7/8" I.D.) PLASTIC
20	2	360269	FITTING, REUSABLE 10-12
21	1	360273	ADAPTER, HOSE
22	1	360054	ADAPTER, ST. 1/2 NPT / 3/4-16 JIC
23	2	360266	FITTING, REUSABLE 8-8

NOTE: ITEMS 11, 12, 13, 14, 15, 20 AND 21 ARE SHIPPED LOOSE FOR CUSTOMER INSTALLATION.

FIXTURE NO.	FINISH NO.	CHG	REVISIONS	DATE	APP'D
		LTR	DESCRIPTION		



NOTE:
PUMP SPEED -950 R.P.M.(STANDARD)

ADAPTER: SAE 2 BOLT FLANGE.
SHAFT: STRAIGHT SHAFT WITH KEY 3/4" DIA. 2-3/4" LONG
3/16" SQ. KEY 1-5/8" LONG

ITEM	D/S	PART NO.	DESCRIPTION
QUANTITY		LIST OF MATERIAL	
UNLESS OTHERWISE NOTED ALL DIMENSIONS ARE IN INCHES. TOLERANCES UNLESS OTHERWISE SPECIFIED. ANGLES $\pm 1/2^\circ$.XX $\pm .40$ FRACTIONAL $\pm 1/16$.XXX $\pm .010$ REMOVE ALL BURRS AND SHARP EDGES. DO NOT SCALE THIS DRAWING. TOLERANCES NOT SHOWN ABOVE ARE PER ANSI Y14.5-1973 THIS PRINT IS THE PROPERTY OF AUTO CRANE CO. AND MUST NOT BE USED IN ANY MANNER DETRIMENTAL TO THEIR INTERESTS.		DRAWN BY <i>ALB THONG</i>	AUTO CRANE COMPANY P.O. BOX 45548 • TULSA, OKLAHOMA 74145 9260 BROKEN ARROW EXPRESSWAY • 918-627-9475
		DATE 2-16-83	
		CHK'D BY	
		DATE	
		ENG. BY	
NEXT ASS'Y		DATE	SCALE
		WEIGHT	SIZE
		DRAWING NO.	REVISION
		AW-360030	
		SHEET	OF
		1	1

FIXTURE NO.	FINISH NO.

CHG	REVISIONS	DATE	APP'D
LTR	DESCRIPTION		

MODEL NO. 1618-3-12
OR 16181-3-12

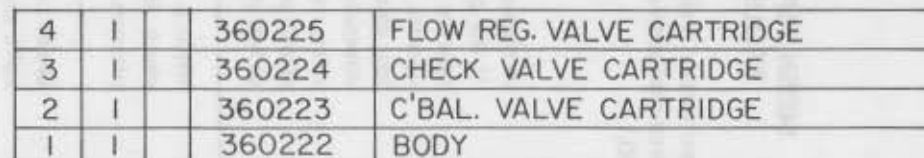
TORQUE 55-60 IN/LB.
8 PLACES

ITEM	QTY	PART NO.	DESCRIPTION & MODEL NO.
5	2	360219	COIL (1618-3-12)
5	2	360220	COIL (16181-3-12)

6	2	360221	MANUAL RELEASE ASSEMBLY
5	—	SEE TABLE	COIL
4	2	360218	PACKING, O-RING
3	4	360217	PACKING, O-RING
2	1	360216	SPOOL ASSEMBLY
1	1	36Q215	SLEEVE

QUANTITY		LIST OF MATERIAL	
UNLESS OTHERWISE NOTED ALL DIMENSIONS ARE IN INCHES. TOLERANCES UNLESS OTHERWISE SPECIFIED: ANGLES 1° 1/2° XX 1/40 FRACTIONAL 1/16 XXX 1/80 REMOVE ALL BURRS AND SHARP EDGES. DO NOT SCALE THIS DRAWING. TOLERANCES NOT SHOWN ABOVE ARE PER ANSI Y14.5-1973 THIS PRINT IS THE PROPERTY OF AUTO CRANE CO. AND MUST NOT BE USED IN ANY MANNER DETRIMENTAL TO THEIR INTERESTS.		AUTO CRANE COMPANY P.O. BOX 95548 • TULSA, OKLAHOMA 74145 9060 BROKEN ARROW EXPRESSWAY • 918-627-9475	
DRAWN BY DATE CHK'D BY DATE ENG. BY DATE		TITLE KIT, SOLENOID VALVE SCALE SIZE C DRAWING NO. AW-360214 REVISION	
NEXT ASSY		WEIGHT SHEET <u>1</u> OF <u>1</u>	

CHG	REVISIONS		
	DESCRIPTION	DATE	APP'D



			ITEM	D/S	PART NO.	DESCRIPTION
--	--	--	------	-----	----------	-------------

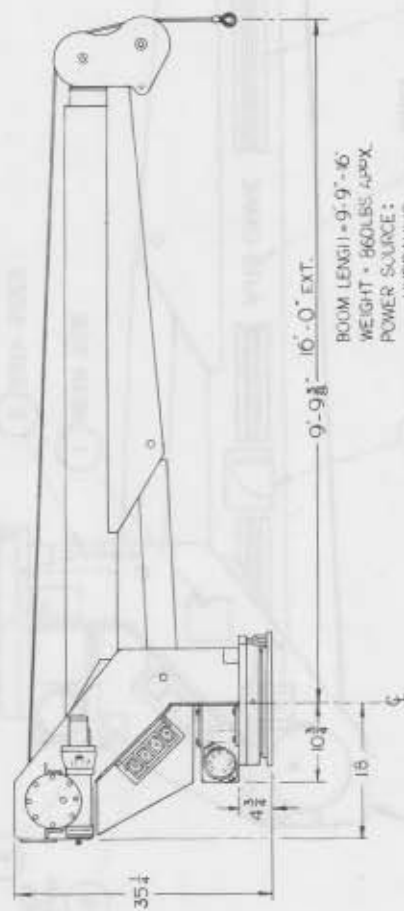
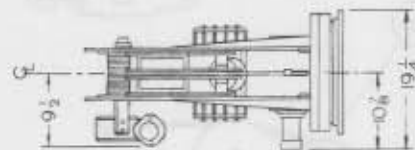
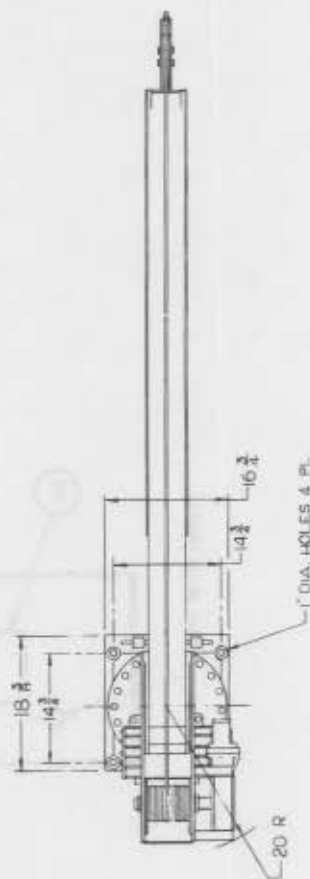
3/84

5005H SERIES HYDRAULICS TROUBLESHOOTING

The hydraulic system of the 5005H power version is electrically operated and requires a minimum of 12V for satisfactory performance. The hydraulic pump is bi-rotational with a pressure relief setting of 2350 P.S.I. (REF.) Standard pump speed to be 950 R.P.M. (Ref. Pump P.N. 360030.)

PROBLEM	SOLUTION
FLOW PRESENT BUT FUNCTION WILL NOT WORK	A manual override is on each end of the directional valves on the 5005H. If the pump is operating, and pushing the manual override in does not operate the selected function, check pump pressure. If the function does operate, remove direction valve cover (360170) and check for loose wire, low voltage or bad ground. If the above items check out all right, replace directional valve. If the problem is traced to no voltage at the directional valve, remove pendant and with the switch engaged check for an open circuit with an ohmmeter. If the circuit is open, check for broken wiring or bad switch.
HYDRAULIC "CHATTER"	When a hydraulic function is engaged and causes the crane to "chatter," check for loose wire, low voltage at directional valve, or low pump pressure.
NO FLOW OR CRANE FAILS TO MOVE WHEN OPERATED	Check to maintain adequate oil in reservoir (approx. 4½ gal.) by means of sight gauge. Replace if coupling or coupling key is broken. Correct if relieve valve stuck open. Check for pressure line blockage. Make sure pump is working correctly. Also check actuator. Insure no restriction in suction line. Check directional valve.
Progressively disconnect fittings at test points to verify existence of flow. Rule: Pumps pump flow only; systems and their loads-resistances produce pressure, up to that limit imposed by lowest pressure limiting device exposed to pressure.	
NO PRESSURE OR TOO LOW PRESSURE	Check to maintain adequate oil in reservoir (approx. 4½ gal.) by means of sight gauge. Make sure pressure gauge is functioning correctly. Possible relief hung open. Check for excessive leakage and correct. Check to insure that pressure limit switch is correctly set.
Progressively test circuit points to determine pressure existence.	
TOO HIGH FLOW	Make sure pump size is correct and pump speed is not too fast (950 R.P.M.) Check or replace flow control. Check components for flow displacements.
TOO HIGH PRESSURE	Make sure pressure limit switch is correctly set.

FIGURE NO.	FIGURE NO.	REVISIONS	DATE	APP.



BOOM LENGTH = 9'-9" - 16'
 WEIGHT = 900 LBS. APPROX.
 POWER SOURCE :
 — HYDRAULIC
 REACTOR MOUNTED RESERVOIR
 570° ROTATION

3/84

ITEM NO.	ITEM QTY.	ITEM NO.	REVISION
1	1	1	1
2	1	2	2
3	1	3	3
4	1	4	4
5	1	5	5
6	1	6	6
7	1	7	7
8	1	8	8
9	1	9	9
10	1	10	10
11	1	11	11
12	1	12	12
13	1	13	13
14	1	14	14
15	1	15	15
16	1	16	16
17	1	17	17
18	1	18	18
19	1	19	19
20	1	20	20
21	1	21	21
22	1	22	22
23	1	23	23
24	1	24	24
25	1	25	25
26	1	26	26
27	1	27	27
28	1	28	28
29	1	29	29
30	1	30	30
31	1	31	31
32	1	32	32
33	1	33	33
34	1	34	34
35	1	35	35
36	1	36	36
37	1	37	37
38	1	38	38
39	1	39	39
40	1	40	40
41	1	41	41
42	1	42	42
43	1	43	43
44	1	44	44
45	1	45	45
46	1	46	46
47	1	47	47
48	1	48	48
49	1	49	49
50	1	50	50
51	1	51	51
52	1	52	52
53	1	53	53
54	1	54	54
55	1	55	55
56	1	56	56
57	1	57	57
58	1	58	58
59	1	59	59
60	1	60	60
61	1	61	61
62	1	62	62
63	1	63	63
64	1	64	64
65	1	65	65
66	1	66	66
67	1	67	67
68	1	68	68
69	1	69	69
70	1	70	70
71	1	71	71
72	1	72	72
73	1	73	73
74	1	74	74
75	1	75	75
76	1	76	76
77	1	77	77
78	1	78	78
79	1	79	79
80	1	80	80
81	1	81	81
82	1	82	82
83	1	83	83
84	1	84	84
85	1	85	85
86	1	86	86
87	1	87	87
88	1	88	88
89	1	89	89
90	1	90	90
91	1	91	91
92	1	92	92
93	1	93	93
94	1	94	94
95	1	95	95
96	1	96	96
97	1	97	97
98	1	98	98
99	1	99	99
100	1	100	100

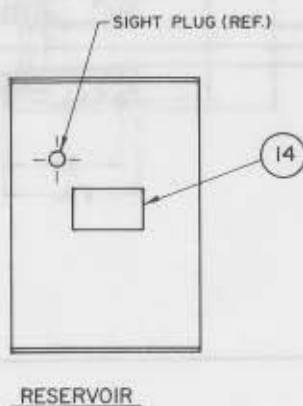
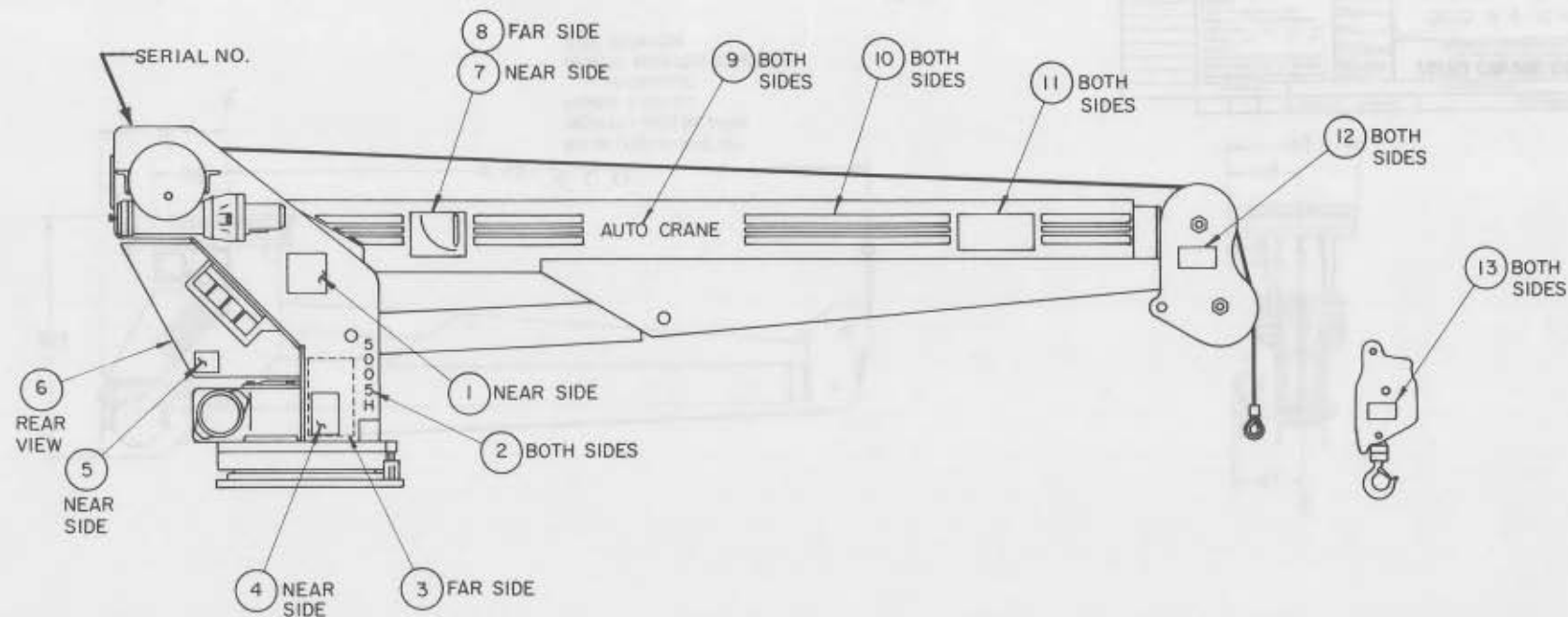
AUTO CRANE COMPANY
 1000 10TH AVE. S.W.
 SEASIDE, CALIF. 94062

5000 9'-9" - 16' HYD.

NOTE: ALL DIMENSIONS IN
 INCHES UNLESS NOTED.

FIXTURE NO.	FINISH NO.

CHG LTR	REVISIONS		DATE	APP'D
	DESCRIPTION			

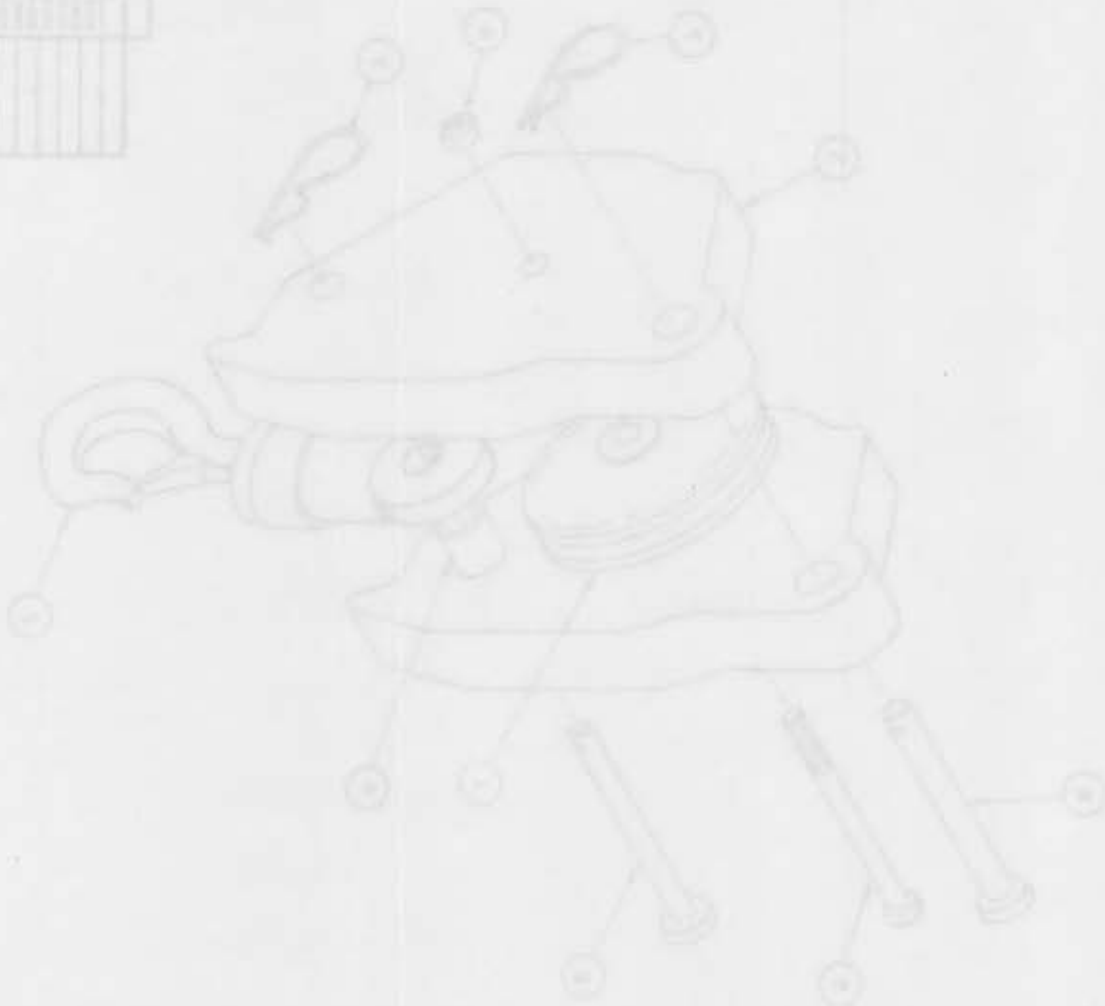


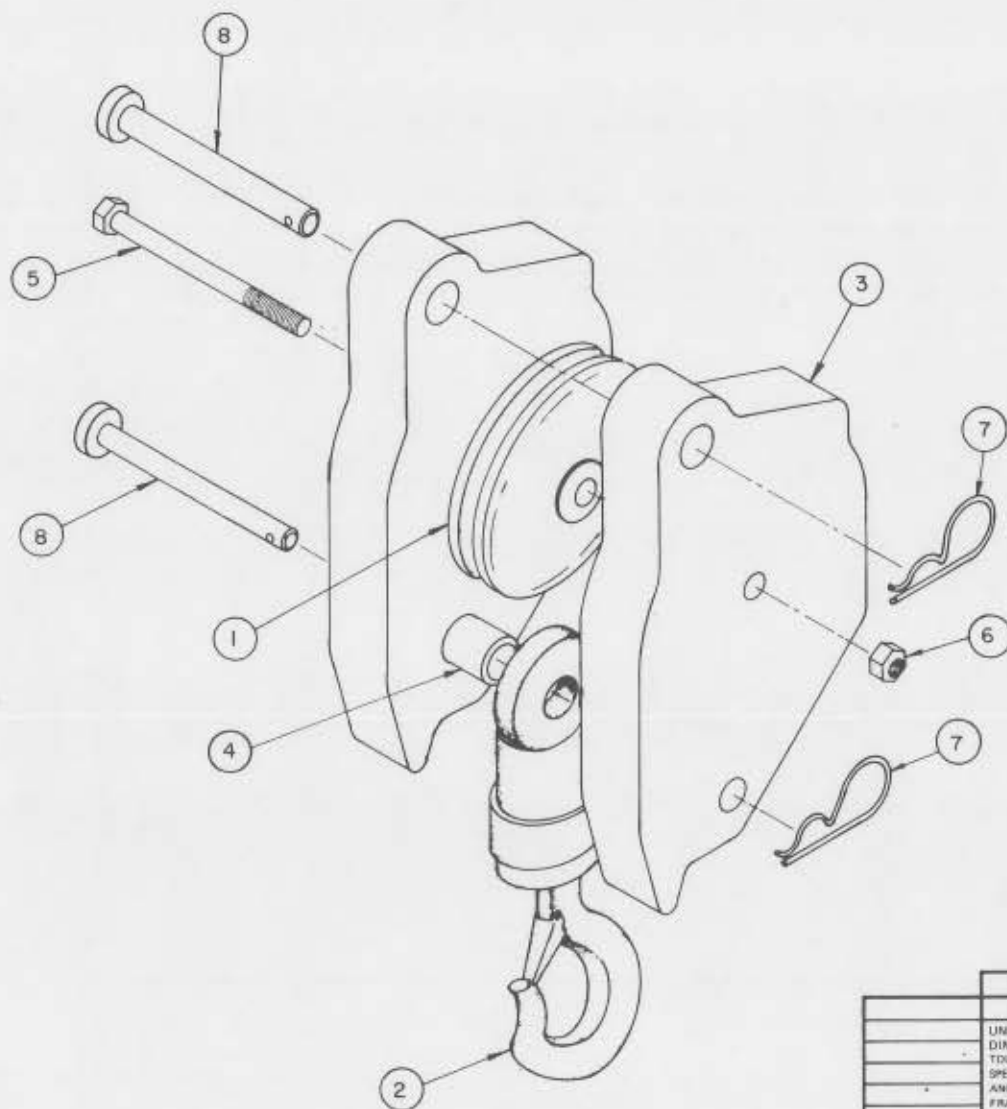
NOTICE: IF CRANE IS REPAINTED, ALL CAUTION AND WARNING DECALS SHOULD BE REPLACED.

QUANTITY	ITEM	D/S	PART NO.	DESCRIPTION
LIST OF MATERIAL				
UNLESS OTHERWISE NOTED ALL DIMENSIONS ARE IN INCHES. TOLERANCES UNLESS OTHERWISE SPECIFIED:			DRAWN BY <i>Auto Crane</i> DATE 2-10-83	
ANGLES ± 1/2°			CHK'D BY	
FRACTIONAL ± 1/16			DATE	
.XXX ± .015			ENG. BY	
REMOVE ALL BURRS AND SHARP EDGES. DO NOT SCALE THIS DRAWING.			DATE	
TOLERANCES NOT SHOWN ABOVE ARE PER ANSI Y14.5, 1973.			SCALE	
THIS PRINT IS THE PROPERTY OF AUTO CRANE CO. AND MUST NOT BE USED IN ANY MANNER DETRIMENTAL TO THEIR INTERESTS.			SIZE C	
NEXT ASS'Y			DRAWING NO. AW-360032	
			REVISION	
			SHEET 1 OF 1	

DECAL LAYOUT – 5005H – AW-360032

ITEM	QTY.	PART NO.	DESCRIPTION
1	1	040579	DECAL - SIX WORKING RULES
2	2	360033	DECAL - 5005H
3	1	360035	LOAD CHART
4	1	040580	DECAL - MUST NOT OPERATE UNLESS . . .
5	1	040632	DECAL - WARNING CYLS. INOP.
6	1	360034	DECAL - LOGO
7	1	360036	DECAL - ANGLE INDICATOR RIGHT
8	1	360037	DECAL - ANGLE INDICATOR LEFT
9	2	040624	DECAL - AUTO CRANE
10	13'	040620	STRIPING
11	2	040529	DECAL - WARNING - BOOM
12	2	040517	DECAL - STAY CLEAR . . .
13	2	040630	DECAL - STAY CLEAR OF LOAD
14	1	040633	CAUTION - 6 GPM . . .



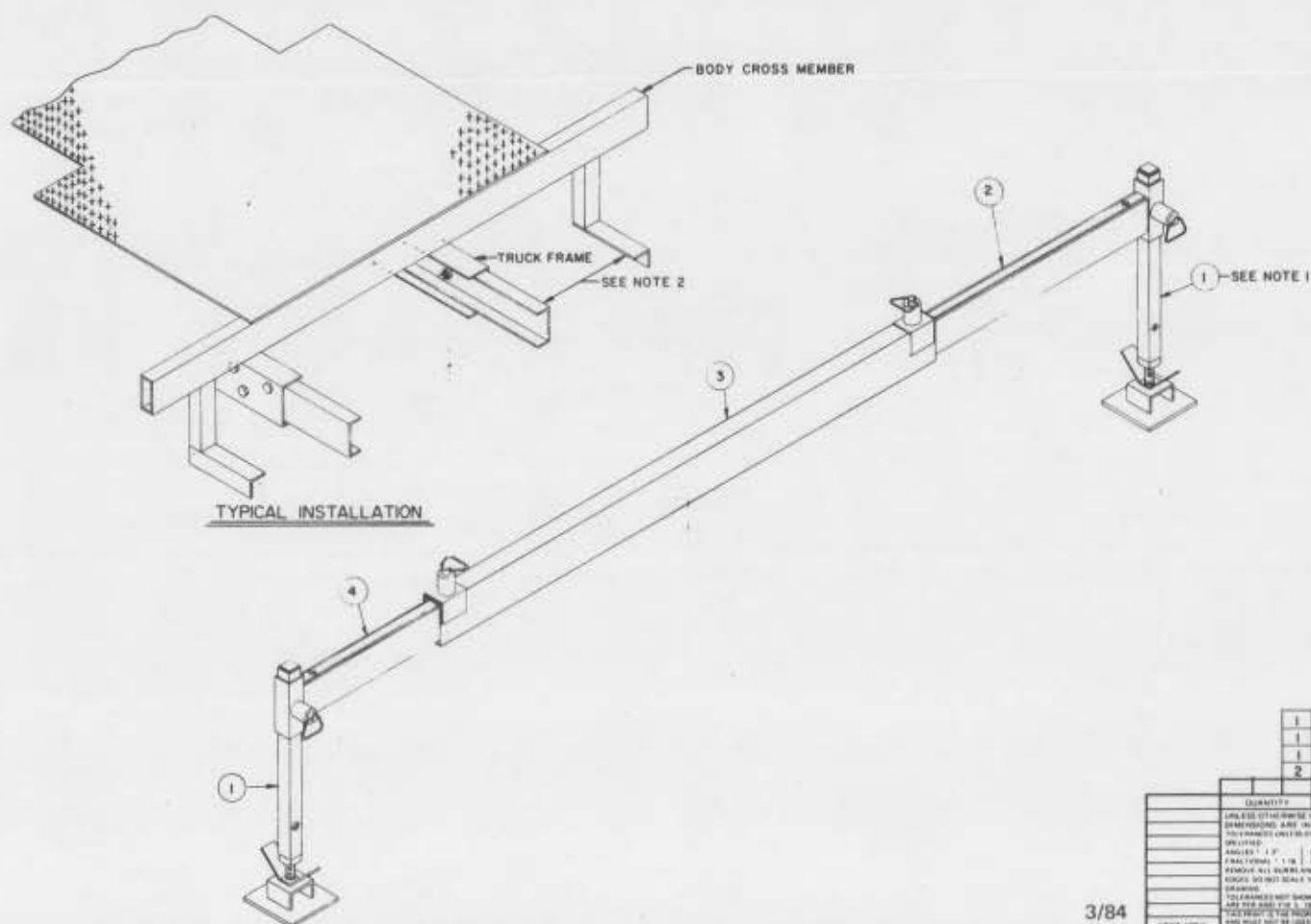


2	8	360125	PIN, BLOCK
2	7	360124	PIN, HITCH
1	6	017800	NUT, HEX. -LOCK 1/2-20
1	5	011610	SCREW, HEX.-HD 1/2-20 X 5 GR5
1	4	240237	SPACER, BUSHING 1" O.D.
2	3	240238	PLATE, SIDE-TRAVEL BLOCK
1	2	200197	HOOK, SWIVEL
1	1	240236	SHEAVE ASSEMBLY

			ITEM	D/S	PART NO.	DESCRIPTION			
QUANTITY			LIST OF MATERIAL						
UNLESS OTHERWISE NOTED ALL DIMENSIONS ARE IN INCHES. TOLERANCES UNLESS OTHERWISE SPECIFIED: ANGLES: 1/2° XX ± .40 FRACTIONAL 2/16 XX ± .010 REMOVE ALL BURRS AND SHARP EDGES; DO NOT SCALE THIS DRAWING. TOLERANCES NOT SHOWN ABOVE ARE PER ANSI Y14.3-1973 THIS PRINT IS THE PROPERTY OF AUTO CRANE CO. AND MUST NOT BE USED IN ANY MANNER DETRIMENTAL TO THE INTERESTS OF THE COMPANY.			DRAWN BY <i>[Signature]</i>		AUTO CRANE COMPANY P.O. BOX #6548 • TULSA, OKLAHOMA 74145 8260 BROKEN ARROW EXPRESSWAY • 918-427-9475				
			DATE <i>1-10-85</i>		TITLE TRAVELING BLOCK ASSEMBLY 5005H				
			CHK'D BY						
			DATE						
			ENG. BY						
			DATE						
			SCALE <i>~</i>		SIZE C	DRAWING NO. AW-360027		REVISION	
WEIGHT			SHEET <i>1</i> OF <i>1</i>						

PICTURE NO.	FIGURE NO.

REV.	DESCRIPTION	DATE	APPD.
1			



NOTES:

1. ADDITIONAL 3/4" HOLES MAY BE DRILLED IN THE LEG ASSEMBLIES FOR PROPER HEIGHTS. (DEPENDENT ON INDIVIDUAL APPLICATIONS.)

2. WELD ITEM 3 TO FRAME EXTENSIONS AND CROSS MEMBER EXTENSIONS.

1	4	C	360325	SOCKET / PULL PIN ASS'Y
1	3	C	360303	O.R. SOCKET / PULL PIN ASS'Y
1	2	C	360302	SOCKET / PULL PIN ASS'Y
2	1	C	360301	LEG ASS'Y

ITEM	QTY	PART NO.	DESCRIPTION
1	4	C 360325	SOCKET / PULL PIN ASS'Y
1	3	C 360303	O.R. SOCKET / PULL PIN ASS'Y
1	2	C 360302	SOCKET / PULL PIN ASS'Y
2	1	C 360301	LEG ASS'Y

3/84



AUTO CRANE COMPANY

P. O. BOX 581510 • TULSA, OKLAHOMA 74158

Limited Warranty

Auto Crane will warranty to consumer for a period of twelve months from date of purchase that each new Auto Crane product it sells will be free under normal use and service, from defects in material and workmanship. Date of purchase will be honored as either date of purchase by distributor or his date of sale of the product as substantiated by Distributor Delivery Report.

Obligation of Auto Crane under this warranty is limited to replacement or repair of parts that appear to manufacturer after review and / or inspection to be defective. This warranty does not obligate Auto Crane to bear the cost of labor or transportation charges in connection with the replacement or repair of defective parts. Responsibility for customer's claims arising from misapplication, abuse, misuse or alteration of equipment or parts lies with the distributor or user and no warranty obligation is assumed in the circumstances by Auto Crane.

Auto Crane will in no event be liable for any consequential damages or contingent liabilities arising out of the failure of any Auto Crane product or parts to operate properly.

Auto Crane makes no warranty in respect to component accessories, same being subject to the warranties of their respective manufacturers.

If field service, at the request of buyer, is rendered and fault is found not to be with Auto Crane's product, the buyer shall pay the time and expense of the field representative. Claims for service labor or other expenses that have been incurred by the buyer without approval or authorization of Auto Crane will not be accepted.

AUTO CRANE COMPANY IS UNDER NO OBLIGATION TO EXTEND THIS WARRANTY TO ANY CUSTOMER FOR WHICH AN AUTO CRANE WARRANTY REGISTRATION CARD HAS NOT BEEN COMPLETED AND MAILED TO AUTO CRANE COMPANY WITHIN FIFTEEN (15) DAYS AFTER DATE OF PURCHASE.