

HC-9**HC9** NexStar™

Engineered for the Way You Work

Auto Crane's HC-9 (hydraulic crane) is engineered specifically for Class 6 mechanic's trucks and equipped with the industry's leading, truly proportional truck-mounted crane control technology—NexStar™.

Key Specifications

Weight:

1,500 lb (680.4 kg)

Single Line Speed:

60 ft/min (18.3 m/min)

Extended Boom Length:

20' 6" (6.2 m)

Boom elevation range:

-14° - +75°

Boom rotation:

370°, full, non-continuous

Hydraulic Requirements:

13-17 gpm (49-64 L/min)

at 2,750 psi (189.6 bar)

Cable:

95 ft (28.95 m) of 3/8" (9.52 mm)

EIPS IWRC galvanized wire rope

Control Options:

NexStar II, Hardware

Warranty:

Two-year factory warranty



**AUTO
CRANE®**

**Engineered First.
Engineered to Last.**

MADE IN THE USA

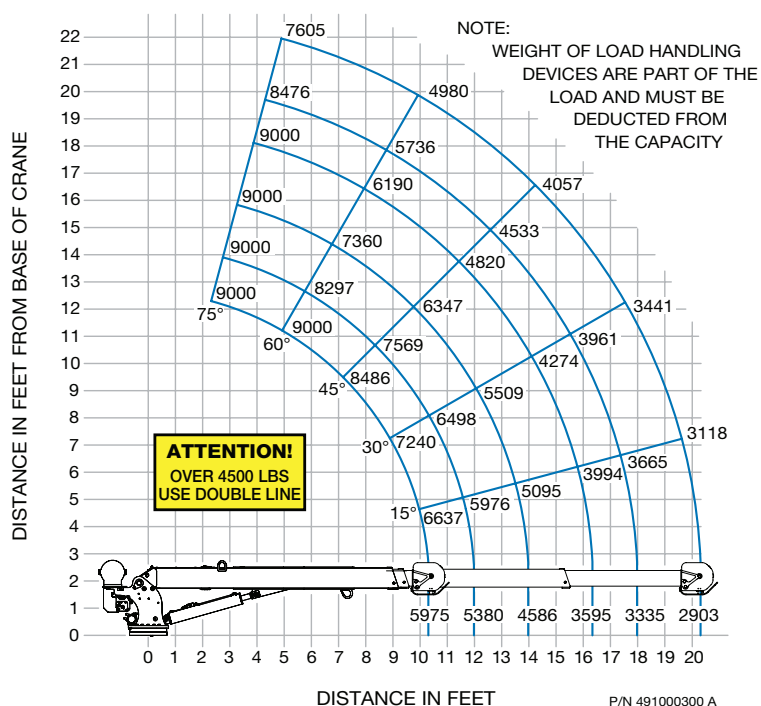
Capacity: 9,000 lb (4,082 kg)

Rating: 59,000 ft-lb (8.15 tM)

Features and Benefits of NexStar™

- **Automatic stop at 100% load capacity**
 - Keeps people, equipment, and loads safer
- **Adjustable speed settings; from 25% to 100%**
 - Enables fine tuning of speeds for total control over the load
- **Proportional control of multiple functions simultaneously and independently**
 - Adjust any function anytime to a different speed, for total control over the load
- **Level sensors monitor the angle of the truck and crane with the NexStar FM remote system on a Titan® crane body**
 - Prevents operation in unsafe, unlevel conditions
- **The NexStar FM remote system receiver displays load-monitoring and diagnostic readouts in plain English**
 - No codes to look-up or memorize; operator views precise percentage load capacity

HC-9 Load Chart



Note: Weight of load handling devices are part of the load and must be deducted from the capacity.

Auto Crane® is a brand of Auto Crane Company, a wholly owned subsidiary of Ramsey Industries, Inc.

Engineered to be the best, Auto Crane is committed to the ongoing improvement of its products. Auto Crane reserves the right to make changes to our products without notice.

autocrane.com | 4707 N. Mingo Road, Tulsa, OK 74117 | Phone: 918-438-2760 | Fax: 888-848-5445

© 2014. All rights reserved. HC-9_12/14_39015