

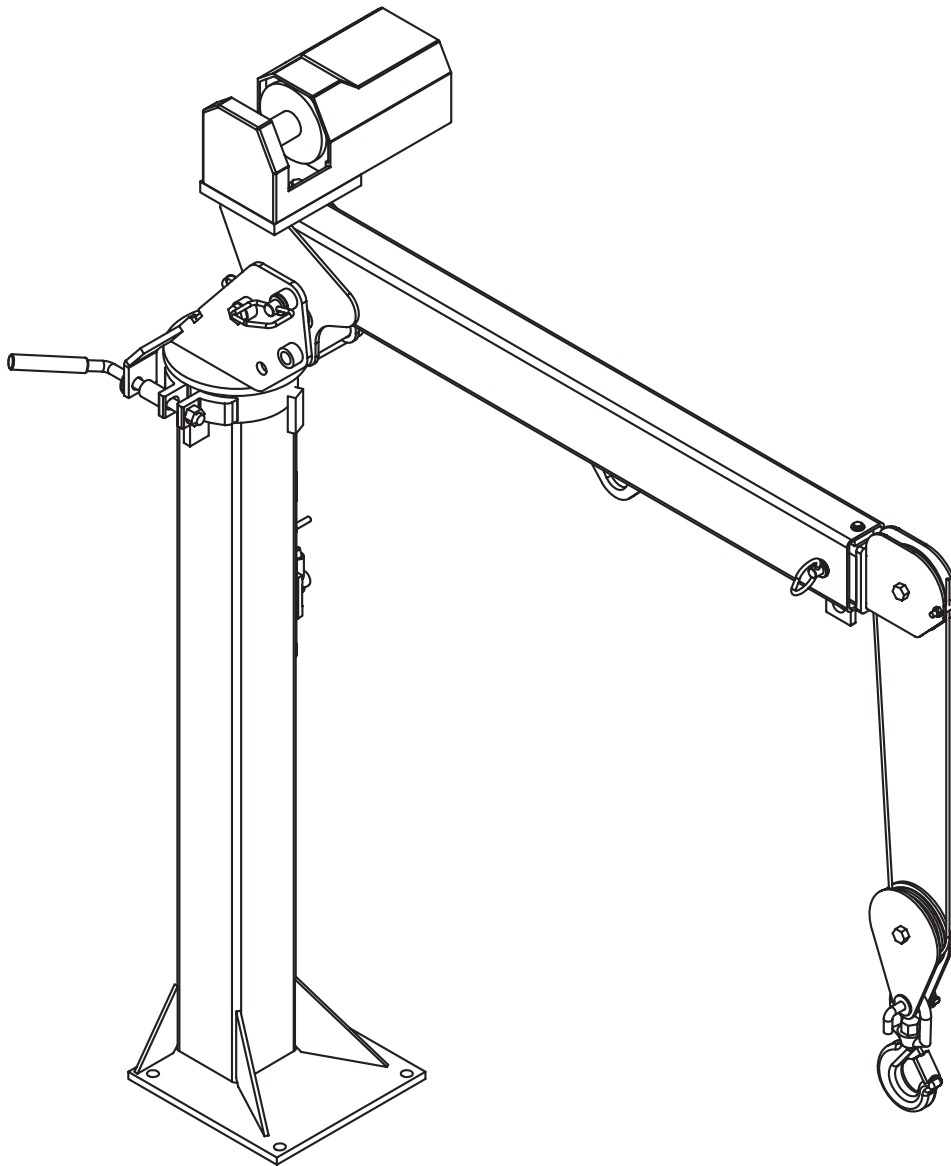


MODEL EC2000

TELESCOPIC CRANE

OWNERS' MANUAL

Installation • Assembly Drawings • Parts



Notice: A copy of this manual must remain with the equipment at all times.
For a printable download copy, please visit: www.stellarindustries.com

Stellar Industries, Inc.

190 State Street

PO Box 169

Garner, IA 50438

800-321-3741

Fax: 641-923-2811

www.stellarindustries.com


Subject to Change without Notification.
© 2017 Stellar Industries, Inc.

Rev 1
PN 90037

EC2000 Manual Revisions

Date of Revision	Section Revised	Description of Revision
January 2, 2013	Installation/Assembly Drawings	Updated wiring schematics and assembly drawings to reflect engineering changes.
October 1, 2013	All Sections	Updated drawings to reflect engineering changes.

Serial Tag Location



DATE

PATENT INFORMATION
<http://www.stellarindustries.com/ip>

MODEL NO. SERIAL NO.

MADE IN THE U.S.A. BY STELLAR INDUSTRIES, INC.
PN C5942

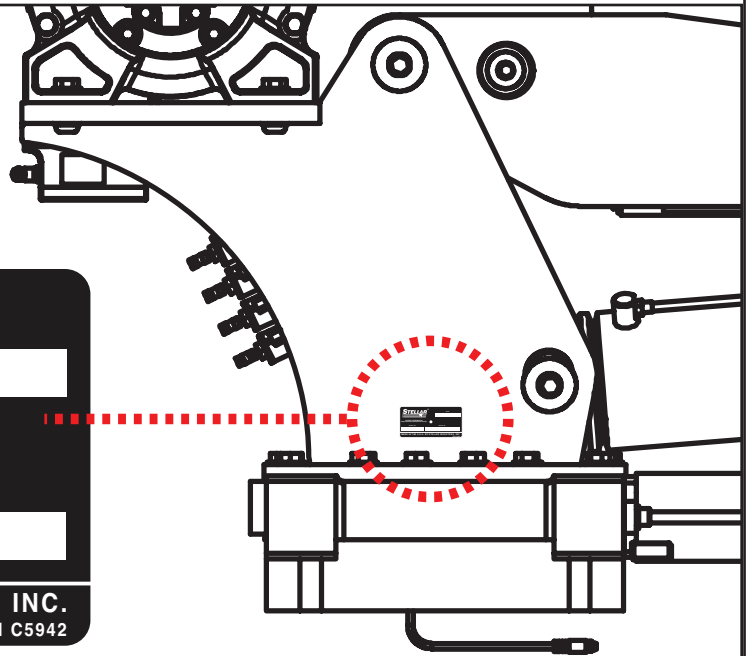


Table of Contents

Introduction.....	ii
Chapter 1 - Specifications.....	1
Capacity Chart - Decal PN 18039.....	2
Chapter 2 - Installation	3
General Installation	3
Installer Notice	3
Torque Data Chart	4
Installation and Mounting Instructions	5
Wiring Diagram.....	6
Control Kit Power Rotation - PN 70117	7
Electrical Circuit Grounding	8
Stability Procedure	9
Decal Kit - PN 18776	10
Chapter 3 - Assembly Drawings	11
Standard Crane Assembly - PN 17631	11
50' Wire Rope Crane Assembly - PN 33939	12
Short Mast Crane Assembly - PN 19146	13
Power Rotation Crane Assembly - PN 22601	14
Power Rotation Short Mast Crane Assembly - PN 24906.....	15
LH Mount Crane Assembly - PN 56658	16
Chapter 4 - Replacement Parts	17

Introduction

A copy of this manual is provided with every crane and can be found in the hard plastic manual case that is installed on the chassis. A copy of this manual shall remain with the crane at all times.

Throughout the manual, three signal words will be used to bring attention to important items:

NOTICE

A NOTICE signal word indicates a practice not related to physical injury.

⚠ WARNING

A WARNING signal word indicates a hazardous situation which, if not avoided, could result in death or serious injury.

⚠ DANGER

A DANGER signal word indicates a hazardous situation which, if not avoided, will result in death or serious injury.

Information contained within this manual does not cover operation, maintenance, or troubleshooting. Please refer to the General EC Crane Manual for details on these items.

This manual is not binding. Stellar Industries, Inc. reserves the right to change, at any time, any or all of the items, components, and parts deemed necessary for product improvement or commercial/production purposes. This right is kept with no requirement or obligation for immediate mandatory updating of this manual.

In closing:

If more information is required or technical assistance is needed, or if you feel that any part of this manual is unclear or incorrect, please contact the Stellar Customer Service Department by phone at 800-321-3741 or email at service@stellarindustries.com.

**For Technical Questions, Information, Parts, or Warranty, Call Toll-Free at
800-321-3741**

Hours: Monday - Friday, 8:00 a.m. - 5:00 p.m. CST

Or email at the following addresses:

Technical Questions, and Information

service@stellarindustries.com

Order Parts

parts@stellarindustries.com

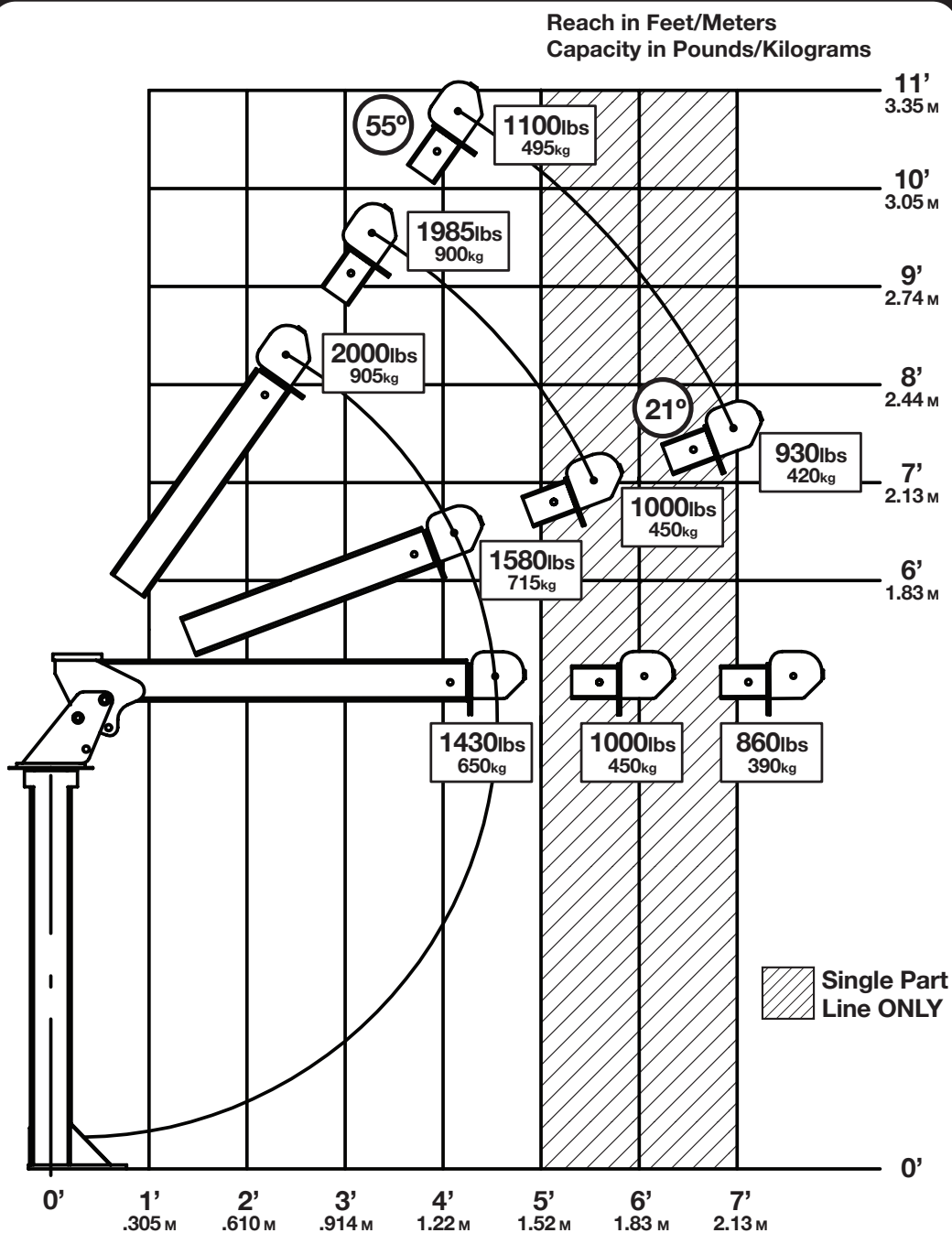
Warranty Information

warranty@stellarindustries.com

Chapter 1 - Specifications

Crane Rating:	6500 ft-lb (.899 TM)
Standard Boom Length:	4' (1.219 m) from CL of Crane
Boom Extension:	1st Position: Manual 18" (45.7 cm)
	2nd Position: Manual 18" (45.7 cm)
Maximum Horizontal Reach:	7' (2.13 m) from CL of Crane
Maximum Vertical Lift (from crane base):	10'9" (3.28 m)
Boom Elevation:	0 to +21 to +56 degrees
Winch Specification	
Rope Diameter:	3/16" (.476 cm)
Line Pull Speed:	20 ft/min (6.10 m)
Max. Single Part Line:	1100 lbs (495 kg)
Max. Double Part Line:	2000 lbs (905 kg)
Manual Rotation:	340° Manual
Power Rotation:	314° Power
Lifting Capacities:	1580 lbs @ 4' (715 kg @ 1.219 m)
	1190 lbs @ 5'6" (540 kg @ 1.676 m)
	930 lbs @ 7' (420 kg @ 2.13 m)
Stowed Height:	60" (152.4 cm)
Crane Only:	30" (76.2 cm) - Short Mast
Mounting Space Required:	12" x 12" (30.5 cm x 30.5 cm)
Approximate Crane Weight:	275 lbs (124.7 kg)
	230 lbs (104.3 kg) - Short Mast
	300 lbs (136.1 kg) - Power Rotation

Capacity Chart - Decal PN 18039



Weight of load handling devices are part of the load lifted and must be deducted from the capacity.

Maximum 1 - part line capacity is 1100lbs (495kg). For greater loads, use 2 - part line.

EC2000



PN 18039

Chapter 2 - Installation

General Installation

This chapter is designed to serve as a general guide for the installation of a EC2000 Crane. Each installation is considered unique so certain portions of this chapter may or may not apply to your direct application. If a question should arise during the installation process, please contact Stellar Customer Service at (800) 321 3741.

It is the installer's responsibility to assure that the crane is mounted on a platform that will support the maximum crane rating of this crane.

⚠ WARNING Do not install this crane on a body not capable of handling the loads imposed on it. Failure to do so may result in serious injury or death.

NOTICE When installing welder units to the service bodies, it is highly recommended that a surge protector is installed on the chassis batteries to protect the crane radio receiver, wiring and other electronic devices from an unexpected electrical spike or surge. Failure to do so could result in extensive damage to the service body and crane electrical circuit.

Installer Notice

According to Federal Law (49 cfr part 571), each final-stage manufacturer shall complete the vehicle in such a manner that it conforms to the standards in effect on the date of manufacture of the incomplete vehicle, the date of final completion, or a date between those two dates. This requirement shall, however, be superseded by any conflicting provisions of a standard that applies by its terms to vehicles manufactured in two or more stages.

Therefore, the installer of Stellar® Cranes and Bodies is considered one of the manufacturers of the vehicle. As such a manufacturer, the installer is responsible for compliance with all applicable federal and state regulations. They are required to certify that the vehicle is in compliance with the Federal Motor Vehicle Safety Standards and other regulations issued under the National Traffic and Motor Vehicle Safety Act.

Please reference the Code of Federal Regulations, title 49 - Transportation, Volume 5 (400-999), for further information, or visit <http://www.gpoaccess.gov/nara/index.html> for the full text of Code of Federal Regulations.

Torque Data Chart

When using the torque data in the chart, the following rules should be observed:

- Bolt manufacturer's particular specifications should be consulted when provided.

- Flat washers of equal strength must be used.

- All torque measurements are given in foot-pounds. To convert to inch-pounds, multiply by 12.

- Torque values specified are for bolts with residual oils or no special lubricants applied. If special lubricants of high stress ability, such as Never-Seez compound graphite and oil, molybdenum

disulphite, colloidal copper or white lead are applied, multiply the torque values in the charts by the factor .90. The use of Loctite does not affect the torque values listed above.

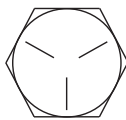
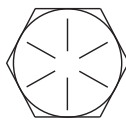
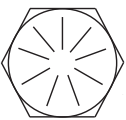
- Torque values for socket-head capscrews are the same as for Grade 8 capscrews.

- Do not use these values if a different torque value or tightening procedure is given for a specific application. Torque values listed are for general use only. Check tightness of fasteners periodically.

- Shear bolts are designed to fail under predetermined loads. Always replace shear bolts with identical grade.

- Fasteners should be replaced with the same or higher grade. If higher grade fasteners are used, these should only be tightened to the strength of the original.

- Tighten plastic insert or crimped steel-type lock nuts to approximately 110 percent of the dry torque values shown in the chart below, applied to the nut, not to the bolt head. Tighten toothed or serrated-type lock nuts to the full torque value. *Note: "Lubricated" means coated with a lubricant such as engine oil, or fasteners with phosphate and oil coatings. "Dry" means plain or zinc plated without lubrication. Tighten lubricated bolts to approximately 80% of dry bolts.*

		GRADE 5		GRADE 8		GRADE 9
						
Size (DIA-TPI)	Bolt DIA (Inches)	Plain (Ft-Lb)	Plated (Ft-Lb)	Plain (Ft-Lb)	Plated (Ft-Lb)	Plated (Ft-Lb)
5/16-18	0.3125	17	13	25	18	22
3/8-16	0.3750	31	23	44	33	39
7/16-14	0.4375	49	37	70	52	63
1/2-13	0.5000	75	57	105	80	96
9/16-12	0.5625	110	82	155	115	139
5/8-11	0.6250	150	115	220	160	192
3/4-10	0.7500	265	200	375	280	340
7/8-9	0.8750	395	295	605	455	549
1-8	1.000	590	445	910	680	823
1 1/8-7	1.1250	795	595	1290	965	1167
1 1/4-7	1.2500	1120	840	1815	1360	1646
1 3/8-6	1.3750	1470	1100	2380	1780	2158
1 1/2-6	1.500	1950	1460	3160	2370	2865

Installation and Mounting Instructions

Installation Instructions:

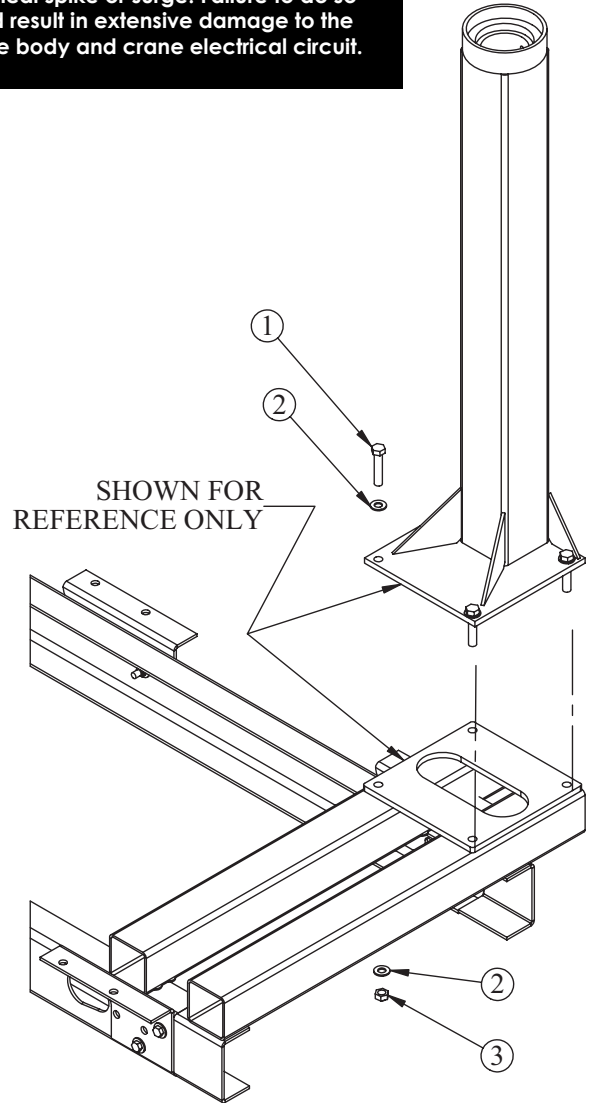
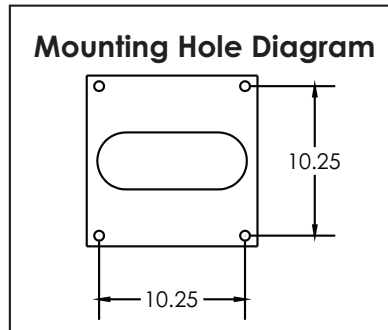
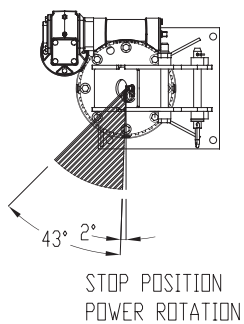
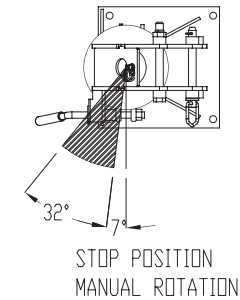
Prepare Platform For Crane Installation (Not Supplied)

1. When designing the platform, maintain a proper clearance for the crane mounting and operation.
2. The platform must be strong enough to support the crane and rated load.
3. Platform/crane support minimum requirements: Top plate should be made from 0.50" grade 50 plate. The structure should be supported by 4 x 4 x 3/16 tubing.

Important: When installing welder units to the service bodies, it is highly recommended that a surge protector is installed on the chassis batteries to protect the crane radio receiver, wiring and other electronic devices from an unexpected electrical spike or surge. Failure to do so could result in extensive damage to the service body and crane electrical circuit.

Mounting Instructions:

1. Lower the crane onto the mounting platform.
2. Mount the crane using 5/8" grade 8 bolts, flat washers, and nyloc nuts.
3. Connect the power supply and control wiring per recommendations as shown on the wiring diagrams in this chapter.
4. Operate the crane for several cycles.

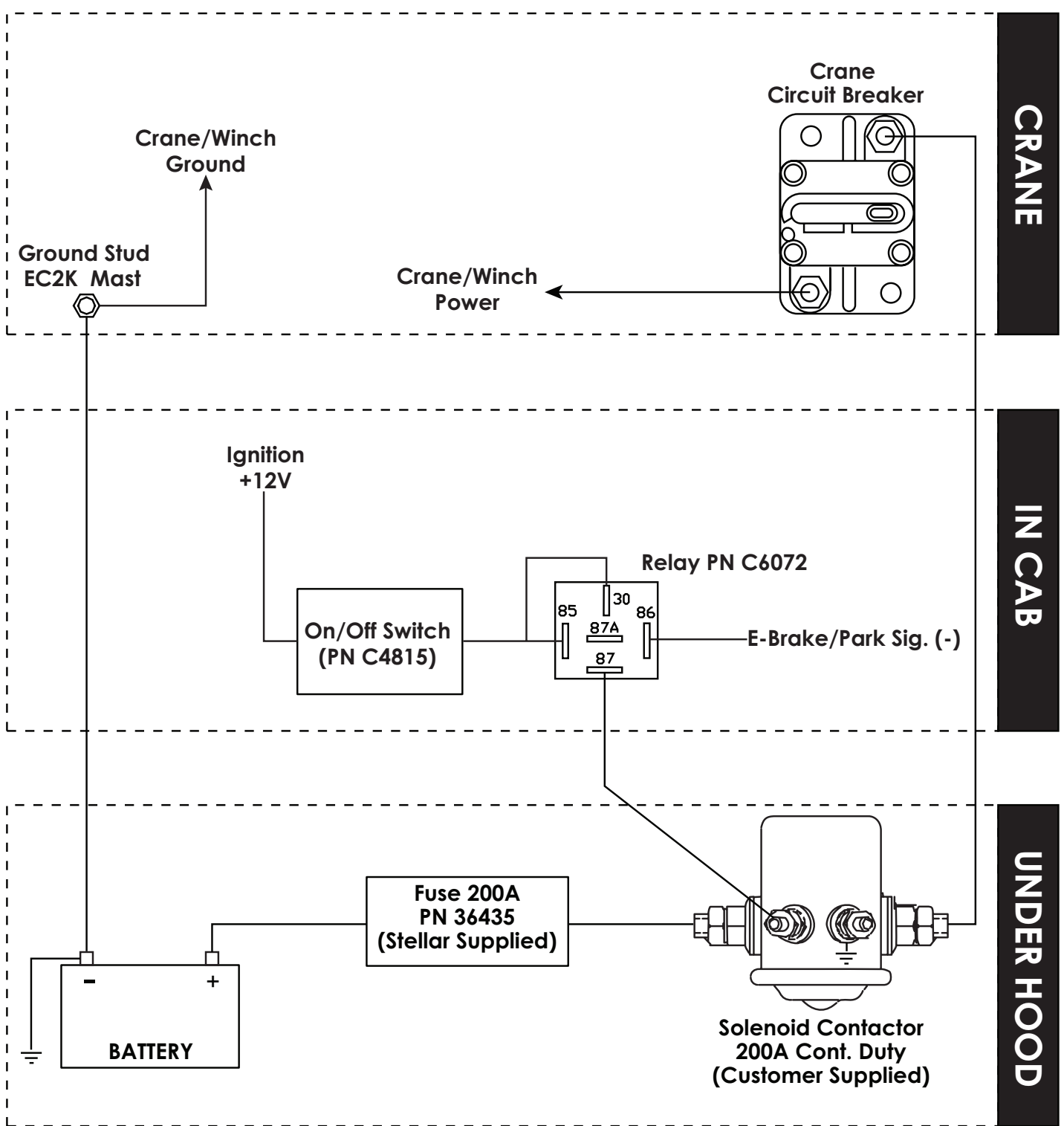


Installation Kit PN 19177

ITEM	PART	DESCRIPTION	QTY.
1	D1034	CAP SCR 0.63-11 X 3.00 HHGR8 ZY	4
2	C5902	WASHER 0.63 SAE FLAT YELLOW GR8	8
3	24868	NUT 0.63-11 HHGR8 NYLOCK ZY	4

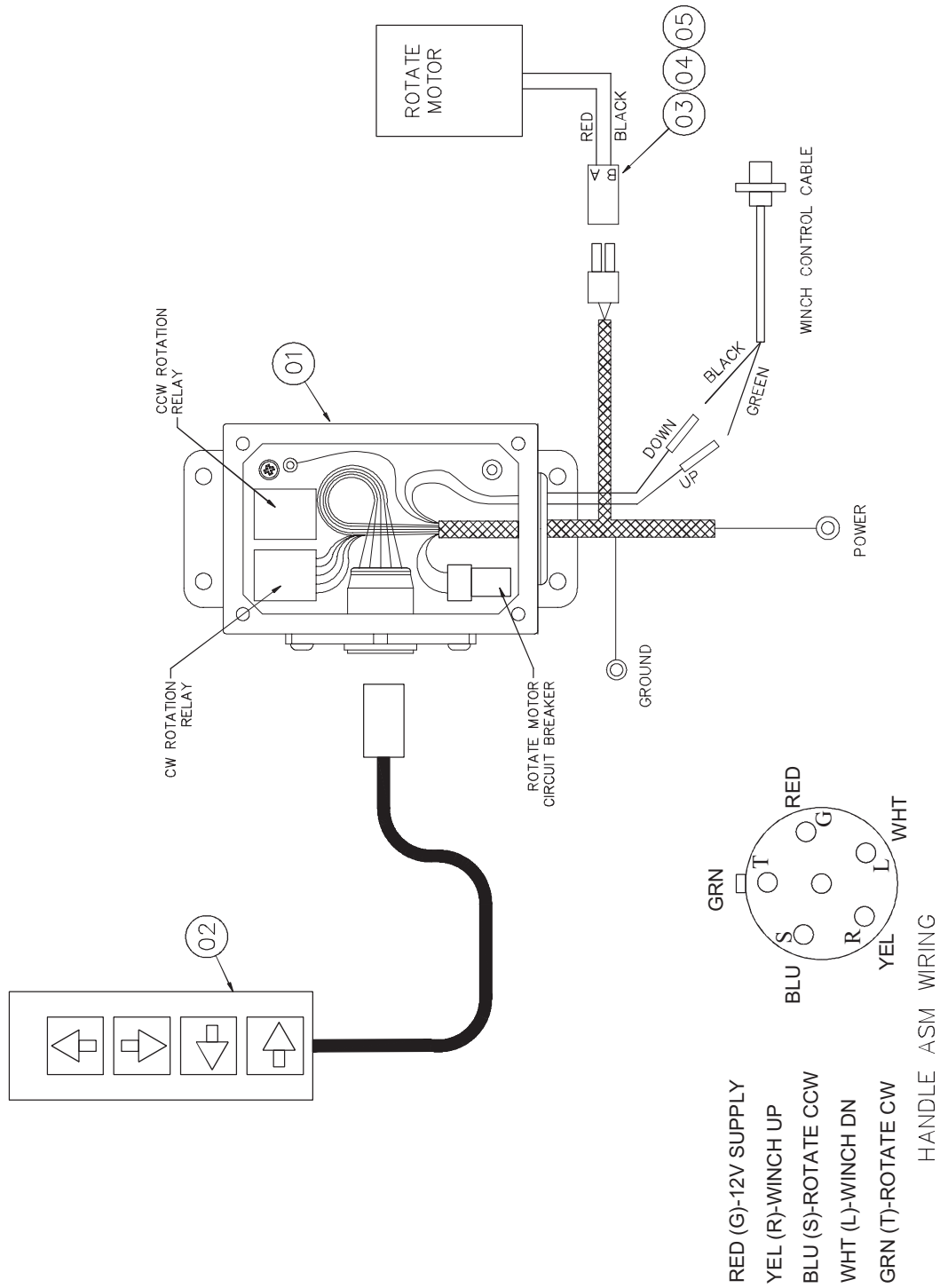
* Items for electrical installation ship with crane in a sealed bag:
Toggle Switch C4815, Relay C6072, Fuse 36435 and Fuse Holder 32523.

Wiring Diagram



* Minimum wire size for power and ground cables: #4

Control Kit Power Rotation - PN 70117



ITEM	PART No.	DESCRIPTION	QTY
01	70073	CONTROL JBOX ASM EC2K PWR ROT	1
02	86044	HANDLE ASM 2 FCTN EC2K POWER	1
03	9752	CONNECTOR 2 PIN SHROUD WEATHERPACK	1
04	13564	CONTACT MALE TERMINAL	2
05	11359	CABLE SEAL 14-16GA	2

Electrical Circuit Grounding

When installing the crane, always locate a good source for grounding the circuit. A majority of electrical failures are due to poor grounding. Poor grounding can cause intermittent operation of the equipment, electrical component failures and cause the equipment to not operate at all.

Chassis manufacturers usually will have a ground strap which ties into the truck frame from the battery, but it is always a good idea to check each individual model to verify where the ground is located. Never use the mechanic body as a ground source. Make sure the electrical grounds are routed to either the chassis frame rail or the chassis's main grounding source.

Stellar provides a stud (PN 40992) for grounding the crane to the chassis frame rail:



Inside Frame Rail



Outside Frame Rail

- **⚠ WARNING** Drill the hole to the frame rail in accordance with the chassis body builder's guide.
- **Hole size: 21/64"**
- The hole location should allow for the shortest length of ground wire while keeping enough slack for flexibility.
- Be sure to grind the frame rail around the hole to ensure a proper ground connection.
- Frame rail thickness may require additional flat washers (as shown).
- Use an electrical coating on hardware to prevent corrosion.

Stability Procedure

Definition of Stability for the Stellar Telescopic Crane Products:

A truck is stable until the load cannot be lifted off the ground with the winch, without tipping over the truck. Every Stellar crane installed must be tested for stability to determine the actual load capacity of the final truck package. The actual test data must be recorded and supplied with the truck at the time of in-service and should be kept with the truck at all times. The following procedure will test the truck package for stability and will provide a stability capacity chart. The load limit information shown on the stability capacity chart is formulated on 85% tipping.

Set Up:

1. Locate the truck on a test course in position for loading and engage travel brakes.
2. Set stabilizers so that they make contact with firm, level footings.
3. Operate the crane under partial load to assure operator proficiency and proper machine function.

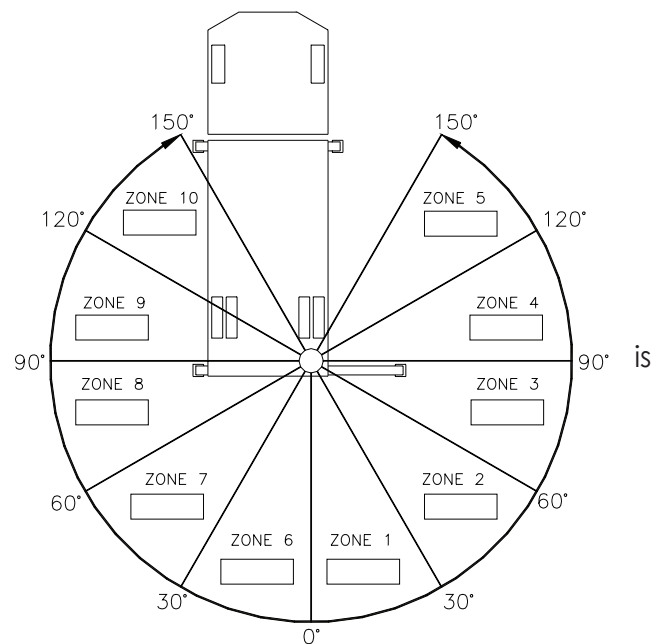
EC2000 Stability Data

Max Horizontal Reach: 180" (From the center of rotation to boom tip)

Stability Test Weight: 875 lbs.

Test Procedure

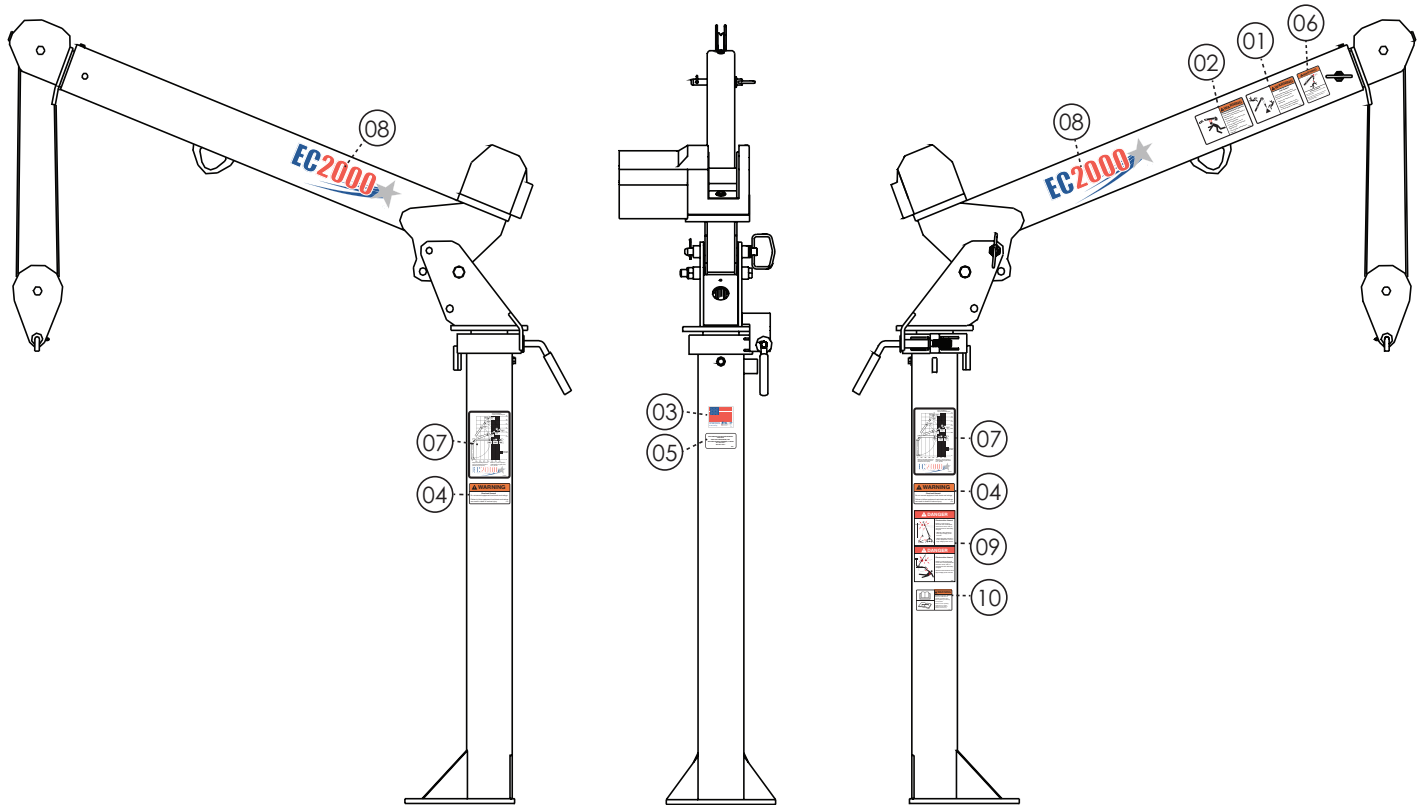
1. Rotate the crane into Zone 1 position.
2. With the crane fully retracted and the boom horizontal, winch the test weight off the ground. Note: Keep weight within six inches of the ground at all times.
3. Extend the boom outward until full extension has been reached or until the truck becomes unstable (Again, use the winch to keep the weight within six inches of the ground.)
4. If the boom goes full extension without becoming unstable, the crane termed stable for this zone and 100% can be written in the Zone 1 data box.
5. If the truck becomes unstable prior to going full extension, retract the boom until the truck becomes stable and measure the horizontal reach in this position (center of rotation to boom tip). This is the stable horizontal reach for this zone. Stable horizontal reach divided by Maximum horizontal reach multiplied by 100 equals the percentage of rated capacity for this zone. Use the following formula to determine the percentage of rated capacity:



$$\frac{\text{Stable Horizontal Reach}}{\text{Max Horizontal Reach}} \times 100 = \text{Percentage of Rated}$$

6. Record this number in the data box for Zone 1. This is the revised capacity due to stability for this zone.
7. Repeat this procedure for each zone until the worksheet is completed.
8. This is the revised capacity based on stability of this package.

Decal Kit - PN 18776



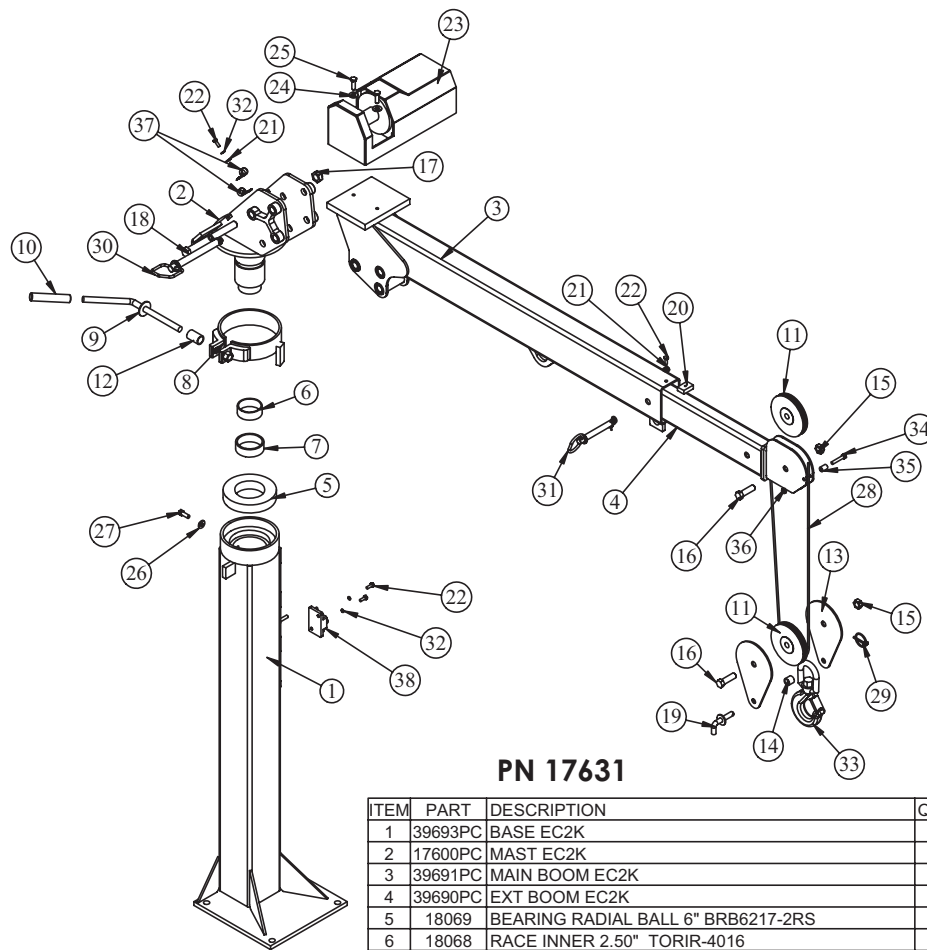
PN 18776
(Rev C - 05/15/17)
Updated BOM's

EC2000 DECAL KIT

ITEM	PN	DESCRIPTION	LOCATION	QTY
01	12451	DECAL WARNING HOISTING PERSONNEL	Main Boom	1
02	12452	DECAL WARNING MANUAL EXT	Main Boom	1
03	35234	DECAL STELLAR MADE IN THE USA	Main Boom	1
04	4189	DECAL WARNING OVERLOAD	Crane Compartment	1
05	4214	DECAL SERVICE	Crane Compartment	1
06	12300	DECAL WARNING TWO BLOCKING	Crane Horse Head	1
07	18039	DECAL CAPACITY EC2000	Crane Mast (Both Sides)	2
08	18040	DECAL IDENTIFICATION EC2000	Main Boom (Both Sides)	2
09	6727	DECAL DANGER ELECTROCUTION VERT	Crane Mast	1
10	77734	DECAL WARNING UNTRAINED OPERATOR	Crane Mast	1

Chapter 3 - Assembly Drawings

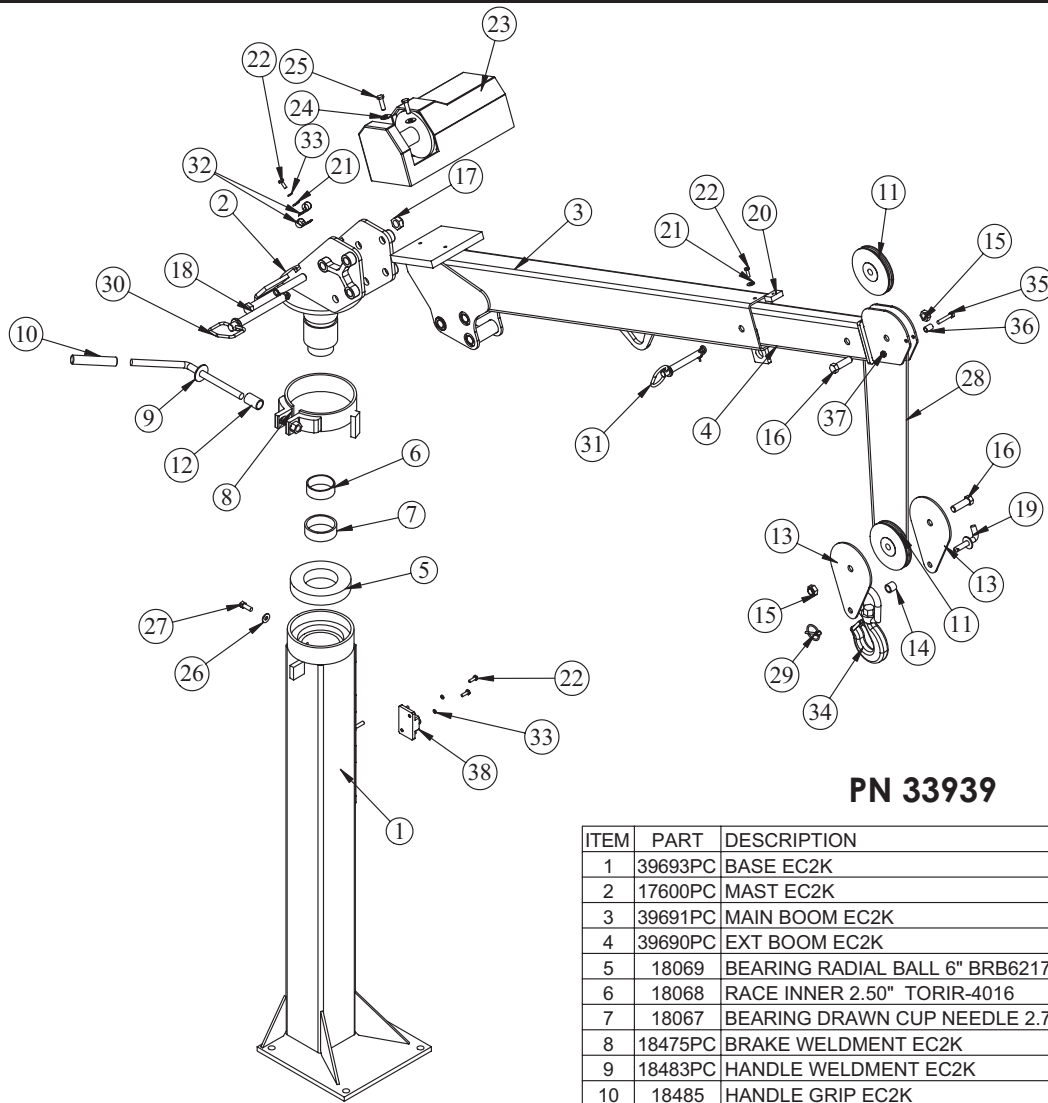
Standard Crane Assembly - PN 17631



PN 17631

ITEM	PART	DESCRIPTION	QTY.
1	39693PC	BASE EC2K	1
2	17600PC	MAST EC2K	1
3	39691PC	MAIN BOOM EC2K	1
4	39690PC	EXT BOOM EC2K	1
5	18069	BEARING RADIAL BALL 6" BRB6217-2RS	1
6	18068	RACE INNER 2.50" TORIR-4016	1
7	18067	BEARING DRAWN CUP NEEDLE 2.75" TORB-4416	1
8	18475PC	BRAKE WELDMENT EC2K	1
9	18483PC	HANDLE WELDMENT EC2K	1
10	18485	HANDLE GRIP EC2K	1
11	17222	SHEAVE EC2K 5.00 DIA .19R/.75 THK	2
12	18711PC	PIPE 0.75 SCH40X1.63	1
13	17965PC	PLATE EC2K SNATCH BLOCK	2
14	18036PC	SPACER SNATCH BLOCK EC2K	1
15	2826	NUT 0.63-11 HH NYLOC	2
16	0399	CAP SCR 0.63-11X2.00 HHGR5	2
17	C0538	NUT 0.75-10 HHGR8 NYLOC	1
18	18712	CAP SCR 0.75-10X7.50 HHGR8 ZY	1
19	18714PC	PIN WELDMENT LATCHING	1
20	18715PC	STOP EXT EC2K	1
21	0340	WASHER 0.25 FLAT	2
22	0479	CAP SCR 0.25-20X0.75 HHGR5	4
23	18774	WINCH 1000 03002	1
24	C6353	WASHER 0.38 FLAT GR8	2
25	13576	CAP SCR 0.38-16X1.25 HHGR8	2
26	0346	WASHER 0.38 FLAT	1
27	0351	CAP SCR 0.38-16X1.00 HHGR5	1
28	18773	WIRE ROPE 3/16 7X19 GAC 40FT	1
29	5753	PIN 0.19X1.56 LYNCH	1
30	18778	PIN HITCH 0.75X6.25 W LANYARD	1
31	18777	PIN HITCH 0.63X4.00 W LANYARD	1
32	0521	WASHER 0.25 LOCK	3
33	C6018	HOOK CRANE-3 TON	1
34	0487	CAP SCR 0.31-18X1.75 HHGR5	1
35	19374PC	SPACER BOOM TIP EC2K	1
36	0342	NUT 0.31-18 HH NYLOC	1
37	C0078	CLAMP 0.38 BLK VINYL	2
38	69846	CIRCUIT BREAKER 50A MAN RESET PTT SRFMNT	1

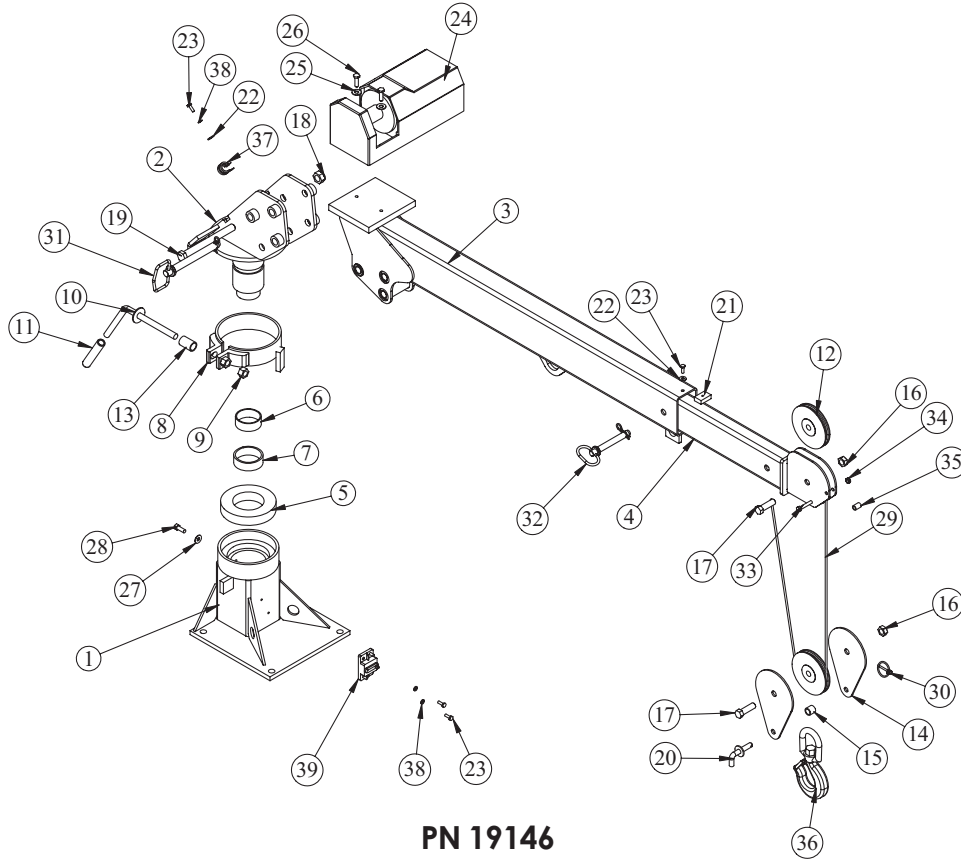
50' Wire Rope Crane Assembly - PN 33939



PN 33939

ITEM	PART	DESCRIPTION	QTY.
1	39693PC	BASE EC2K	1
2	17600PC	MAST EC2K	1
3	39691PC	MAIN BOOM EC2K	1
4	39690PC	EXT BOOM EC2K	1
5	18069	BEARING RADIAL BALL 6" BRB6217-2RS	1
6	18068	RACE INNER 2.50" TORIR-4016	1
7	18067	BEARING DRAWN CUP NEEDLE 2.75" TORB-4416	1
8	18475PC	BRAKE WELDMENT EC2K	1
9	18483PC	HANDLE WELDMENT EC2K	1
10	18485	HANDLE GRIP EC2K	1
11	17222	SHEAVE EC2K 5.00 DIA .19R/.75 THK	2
12	18711PC	PIPE 0.75 SCH40X1.63	1
13	17965PC	PLATE EC2K SNATCH BLOCK	2
14	18036PC	SPACER SNATCH BLOCK EC2K	1
15	2826	NUT 0.63-11 HH NYLOC	2
16	0399	CAP SCR 0.63-11X2.00 HHGR5	2
17	C0538	NUT 0.75-10 HHGR8 NYLOC	1
18	18712	CAP SCR 0.75-10X7.50 HHGR8 ZY	1
19	18714PC	PIN WELDMENT LATCHING	1
20	18715PC	STOP EXT EC2K	1
21	0340	WASHER 0.25 FLAT	2
22	0479	CAP SCR 0.25-20X0.75 HHGR5	4
23	18774	WINCH 1000 03002	1
24	C6353	WASHER 0.38 FLAT GR8	2
25	13576	CAP SCR 0.38-16X1.25 HHGR8	2
26	0346	WASHER 0.38 FLAT	1
27	0351	CAP SCR 0.38-16X1.00 HHGR5	1
28	33940	WIRE ROPE 3/16 7X19 IWRC-XIP 50 FT	1
29	5753	PIN 0.19X1.56 LYNCH	1
30	18778	PIN HITCH 0.75X6.25 W LANYARD	1
31	18777	PIN HITCH 0.63X4.00 W LANYARD	1
32	C0078	CLAMP 0.38 BLK VINYL	2
33	0521	WASHER 0.25 LOCK	3
34	C6018	HOOK CRANE-3 TON	1
35	0487	CAP SCR 0.31-18X1.75 HHGR5	1
36	19374PC	SPACER BOOM TIP EC2K	1
37	0342	NUT 0.31-18 HH NYLOC	1
38	69846	CIRCUIT BREAKER 50A MAN RESET PTT SRFMNT	1

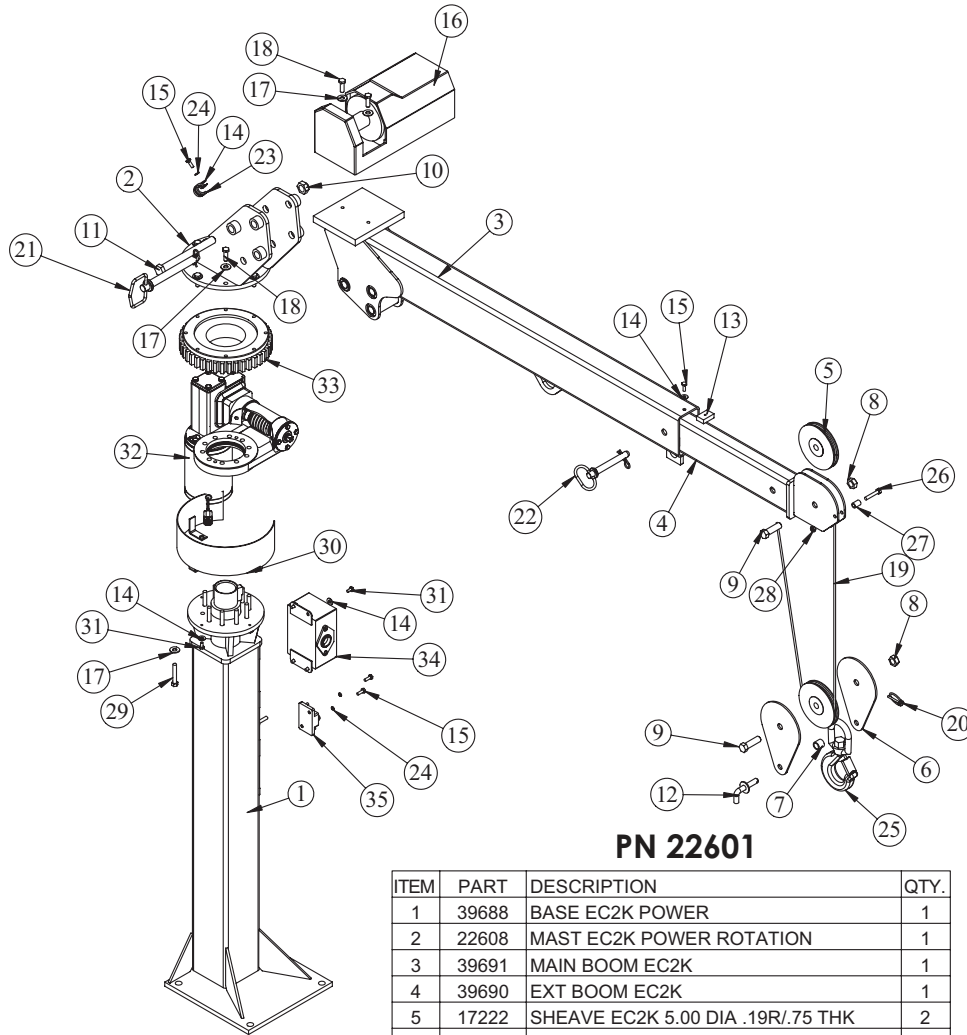
Short Mast Crane Assembly - PN 19146



PN 19146

ITEM	PART	DESCRIPTION	QTY.
1	39703	BASE EC2K SHORT	1
2	17600	MAST EC2K	1
3	39691	MAIN BOOM EC2K	1
4	39690	EXT BOOM EC2K	1
5	18069	BEARING RADIAL BALL 6" BRB6217-2RS	1
6	18068	RACE INNER 2.50" TORIR-4016	1
7	18067	BEARING DRAWN CUP NEEDLE 2.75" TORB-4416	1
8	18475	BRAKE WELDMENT EC2K	1
9	0357	NUT 0.63-11 HHGR5	1
10	18483PC	HANDLE WELDMENT EC2K	1
11	18485	HANDLE GRIP EC2K	1
12	17222	SHEAVE EC2K 5.00 DIA .19R/.75 THK	2
13	18711	PIPE 0.75 SCH40X1.63	1
14	17965	PLATE EC2K SNATCH BLOCK	2
15	18036	SPACER SNATCH BLOCK EC2K	1
16	2826	NUT 0.63-11 HH NYLOC	2
17	0399	CAP SCR 0.63-11X2.00 HHGR5	2
18	2828	NUT 0.75-10 HH NYLOC	1
19	18712	CAP SCR 0.75-10X7.50 HHGR8 ZY	1
20	18714	PIN WELDMENT LATCHING	1
21	18715	STOP EXT EC2K	1
22	0340	WASHER 0.25 FLAT	2
23	0479	CAP SCR 0.25-20X0.75 HHGR5	4
24	18774	WINCH 1000 03002	1
25	C6353	WASHER 0.38 FLAT GR8	2
26	13576	CAP SCR 0.38-16X1.25 HHGR8	2
27	0346	WASHER 0.38 FLAT	1
28	0351	CAP SCR 0.38-16X1.00 HHGR5	1
29	18773	WIRE ROPE 3/16 7X19 GAC 40FT	1
30	5753	PIN 0.19X1.56 LYNCH	1
31	18778	PIN HITCH 0.75X6.25 W\ LANYARD	1
32	18777	PIN HITCH 0.63X4.00 W\ LANYARD	1
33	0487	CAP SCR 0.31-18X1.75 HHGR5	1
34	0342	NUT 0.31-18 HH NYLOC	1
35	19374	SPACER BOOM TIP EC2K	1
36	C6018	HOOK CRANE-3 TON	1
37	7623	CLAMP 1.00 RUBBER	1
38	0521	WASHER 0.25 LOCK	3
39	69846	CIRCUIT BREAKER 50A MAN RESET PTT SRFMNT	1

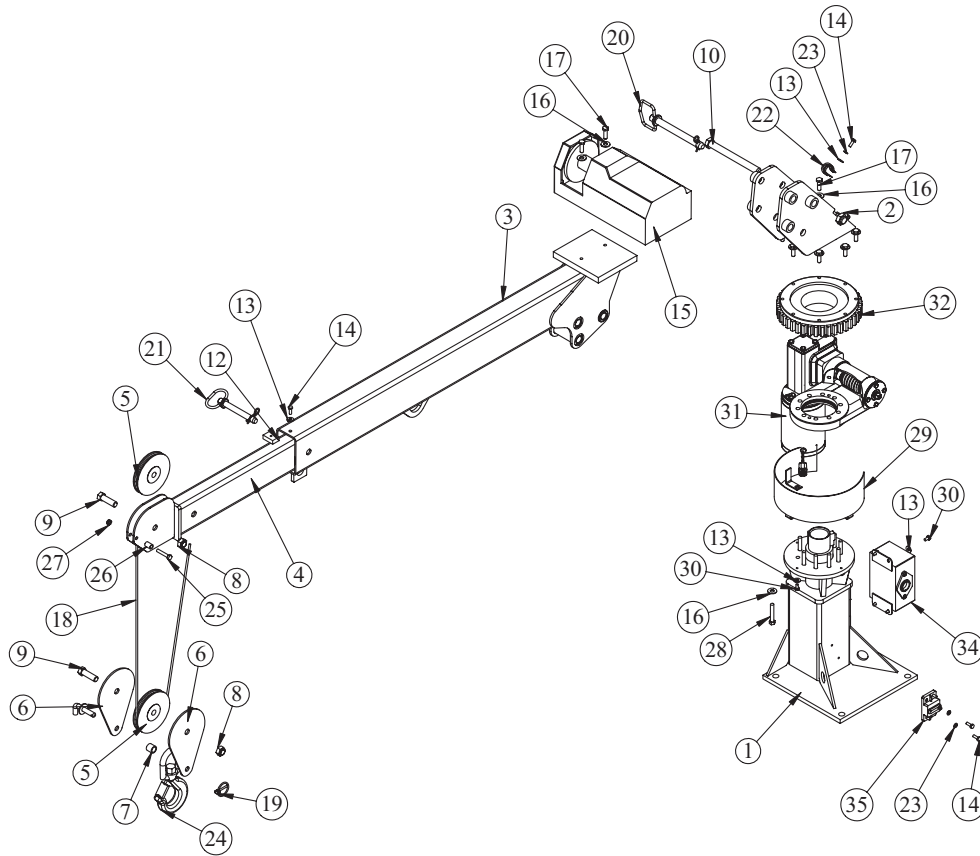
Power Rotation Crane Assembly - PN 22601



PN 22601

ITEM	PART	DESCRIPTION	QTY.
1	39688	BASE EC2K POWER	1
2	22608	MAST EC2K POWER ROTATION	1
3	39691	MAIN BOOM EC2K	1
4	39690	EXT BOOM EC2K	1
5	17222	SHEAVE EC2K 5.00 DIA .19R/.75 THK	2
6	17965	PLATE EC2K SNATCH BLOCK	2
7	18036	SPACER SNATCH BLOCK EC2K	1
8	2826	NUT 0.63-11 HH NYLOC	2
9	0399	CAP SCR 0.63-11X2.00 HHGR5	2
10	C0538	NUT 0.75-10 HHGR8 NYLOC	1
11	18712	CAP SCR 0.75-10X7.50 HHGR8 ZY	1
12	18714	PIN WELDMENT LATCHING	1
13	18715	STOP EXT EC2K	1
14	0340	WASHER 0.25 FLAT	9
15	0479	CAP SCR 0.25-20X0.75 HHGR5	4
16	18774	WINCH 1000 03002	1
17	C6353	WASHER 0.38 FLAT GR8	20
18	13576	CAP SCR 0.38-16X1.25 HHGR8	10
19	18773	WIRE ROPE 3/16 7X19 GAC 40FT	1
20	5753	PIN 0.19X1.56 LYNCH	1
21	18778	PIN HITCH 0.75X6.25 W/ LANYARD	1
22	18777	PIN HITCH 0.63X4.00 W/ LANYARD	1
23	7623	CLAMP 1.00 RUBBER	1
24	0521	WASHER 0.25 LOCK	3
25	C6018	HOOK CRANE-3 TON	1
26	0487	CAP SCR 0.31-18X1.75 HHGR5	1
27	19374	SPACER BOOM TIP EC2K	1
28	0342	NUT 0.31-18 HH NYLOC	1
29	22924	CAP SCR 0.38-16X2.25 HHGR8	10
30	22616	GUARD TTB EC2K	1
31	0478	CAP SCR 0.25-20X0.50 HHGR5	7
32	79699	BEARING HOUSING EC2000 V2	1
33	22613	BEARING GEAR SY7B0101N-10-B	1
34	70117	CONTROL KIT EC2K PWR ROT	1
35	69846	CIRCUIT BREAKER 50A MAN RESET PTT	1

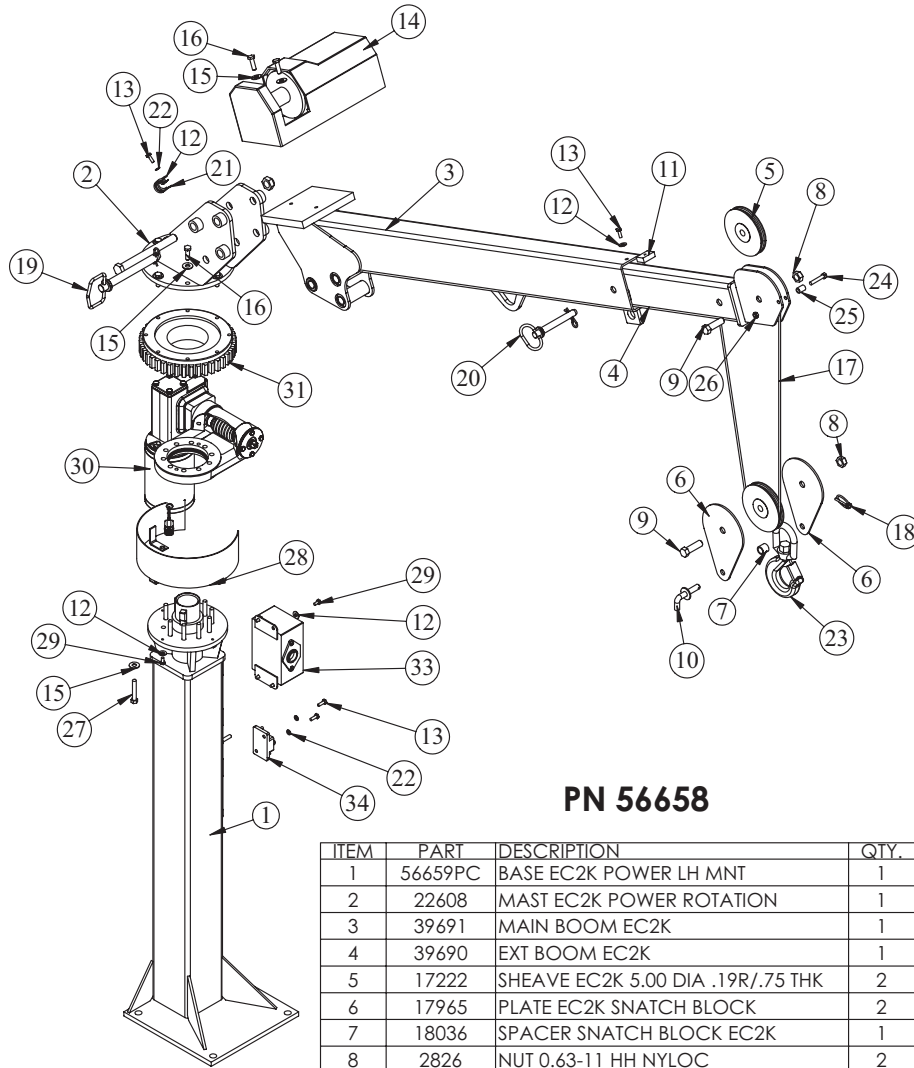
Power Rotation Short Mast Crane Assembly - PN 24906



PN 24906

ITEM	PART	DESCRIPTION	QTY.
1	39696	BASE EC2K POWER SHORT	1
2	22608	MAST EC2K POWER ROTATION	1
3	39691	MAIN BOOM EC2K	1
4	39690	EXT BOOM EC2K	1
5	17222	SHEAVE EC2K 5.00 DIA .19R/.75 THK	2
6	17965	PLATE EC2K SNATCH BLOCK	2
7	18036	SPACER SNATCH BLOCK EC2K	1
8	2826	NUT 0.63-11 HH NYLOC	2
9	0399	CAP SCR 0.63-11X2.00 HHGR5	2
10	18712	CAP SCR 0.75-10X7.50 HHGR8 ZY	1
11	18714	PIN WELDMENT LATCHING	1
12	18715	STOP EXT EC2K	1
13	0340	WASHER 0.25 FLAT	9
14	0479	CAP SCR 0.25-20X0.75 HHGR5	4
15	18774	WINCH 1000 03002	1
16	C6353	WASHER 0.38 FLAT GR8	20
17	13576	CAP SCR 0.38-16X1.25 HHGR8	10
18	18773	WIRE ROPE 3/16 7X19 GAC 40FT	1
19	5753	PIN 0.19X1.56 LYNCH	1
20	18778	PIN HITCH 0.75X6.25 W\ LANYARD	1
21	18777	PIN HITCH 0.63X4.00 W\ LANYARD	1
22	7623	CLAMP 1.00 RUBBER	1
23	0521	WASHER 0.25 LOCK	3
24	C6018	HOOK CRANE-3 TON	1
25	0487	CAP SCR 0.31-18X1.75 HHGR5	1
26	19374	SPACER BOOM TIP EC2K	1
27	0342	NUT 0.31-18 HH NYLOC	1
28	22924	CAP SCR 0.38-16X2.25 HHGR8	10
29	22616	GUARD TTB EC2K	1
30	0478	CAP SCR 0.25-20X0.50 HHGR5	7
31	79699	BEARING HOUSING EC2000 V2	1
32	22613	BEARING GEAR SY7B0101N-10-B	1
33	C0538	NUT 0.75-10 HHGR8 NYLOC	1
34	70117	CONTROL KIT EC2K PWR ROT	1
35	69846	CIRCUIT BREAKER 50A MAN RESET PTT SRFMNT	1

LH Mount Crane Assembly - PN 56658



PN 56658

ITEM	PART	DESCRIPTION	QTY.
1	56659PC	BASE EC2K POWER LH MNT	1
2	22608	MAST EC2K POWER ROTATION	1
3	39691	MAIN BOOM EC2K	1
4	39690	EXT BOOM EC2K	1
5	17222	SHEAVE EC2K 5.00 DIA. .19R/.75 THK	2
6	17965	PLATE EC2K SNATCH BLOCK	2
7	18036	SPACER SNATCH BLOCK EC2K	1
8	2826	NUT 0.63-11 HH NYLOC	2
9	0399	CAP SCR 0.63-11X2.00 HHGR5	2
10	18714	PIN WELDMENT LATCHING	1
11	18715	STOP EXT EC2K	1
12	0340	WASHER 0.25 FLAT	9
13	0479	CAP SCR 0.25-20X0.75 HHGR5	4
14	18774	WINCH 1000 03002	1
15	C6353	WASHER 0.38 FLAT GR8	20
16	13576	CAP SCR 0.38-16X1.25 HHGR8	10
17	18773	WIRE ROPE 3/16 7X19 GAC 40FT	1
18	5753	PIN 0.19X1.56 LYNCH	1
19	18778	PIN HITCH 0.75X6.25 W\ LANYARD	1
20	18777	PIN HITCH 0.63X4.00 W\ LANYARD	1
21	7623	CLAMP 1.00 RUBBER	1
22	0521	WASHER 0.25 LOCK	3
23	C6018	HOOK CRANE-3 TON	1
24	0487	CAP SCR 0.31-18X1.75 HHGR5	1
25	19374	SPACER BOOM TIP EC2K	1
26	0342	NUT 0.31-18 HH NYLOC	1
27	22924	CAP SCR 0.38-16X2.25 HHGR8	10
28	22616	GUARD ITB EC2K	1
29	0478	CAP SCR 0.25-20X0.50 HHGR5	7
30	79699	BEARING HOUSING EC2000 V2	1
31	22613	BEARING GEAR SY7B0101N-10-B	1
32	C0538	NUT 0.75-10 HHGR8 NYLOC	1
33	70117	CONTROL KIT EC2K PWR ROT	1
34	69846	CIRCUIT BREAKER 50A MAN RESET PTT SRFMNT	1
35	18712	CAP SCR 0.75-10X7.50 HHGR8 ZY	1

Chapter 4 - Replacement Parts

ASSEMBLY COMPONENTS

22612	BEARING HOUSING - ROTATION (POWER ROTATION MODELS)
22613	GEAR BEARING - ROTATION (POWER ROTATION MODELS)
18069	BEARING - RADIAL BALL 6.00"
18068	RACE - INNER 2.50"
18067	BEARING DRAWN CUP NEEDLE 2.75"
17222	SHEAVE 5.00" DIA.
18773	WIRE ROPE 40 FT (STANDARD MODELS)
33940	WIRE ROPE 50 FT
18483PC	HANDLE WELDMENT EC2K
18485	HANDLE GRIP EC2K
18715PC	STOP - EXTENSION WELDMENT
18777	HITCH PIN 0.63"X 4.00" W / LANYARD
18778	HITCH PIN 0.75"X 6.25" W / LANYARD
18714PC	PIN WELDMENT - LATCHING
5753	PIN - LYNCH 0.19"X1.56"
C6018	HOOK 3-TON
10709	SAFETY LATCH FOR 3 TON HOOK

ELECTRICAL COMPONENTS

22932	HANDLE ASM 2 FUNCTION EC2K (POWER ROTATION MODELS)
22620	HANDLE ASM - WINCH FUNCTION ONLY (MANUAL ROTATION)
18774	WINCH
39836	COVER - PLASTIC (WINCH)
39687	SOLENOID - SOLID STATE SSC 10-100
37751	BOOT - SOLID STATE SOLENOID TERMINALS
28834	WIRE HARNESS (POWER ROTATION MODELS)
C6072	BOSCH RELAY (POWER ROTATION MODELS)
36435	FUSE 200A
32523	FUSE HOLDER
14994	CONNECTOR SOCKET - TRAILER 6 PIN (POWER ROTATION MODELS)
23892	JUNCTION BLOCK 5/16" 2 POST (POWER ROTATION MODELS)



Subject to Change without Notification.
© 2017 Stellar Industries, Inc.