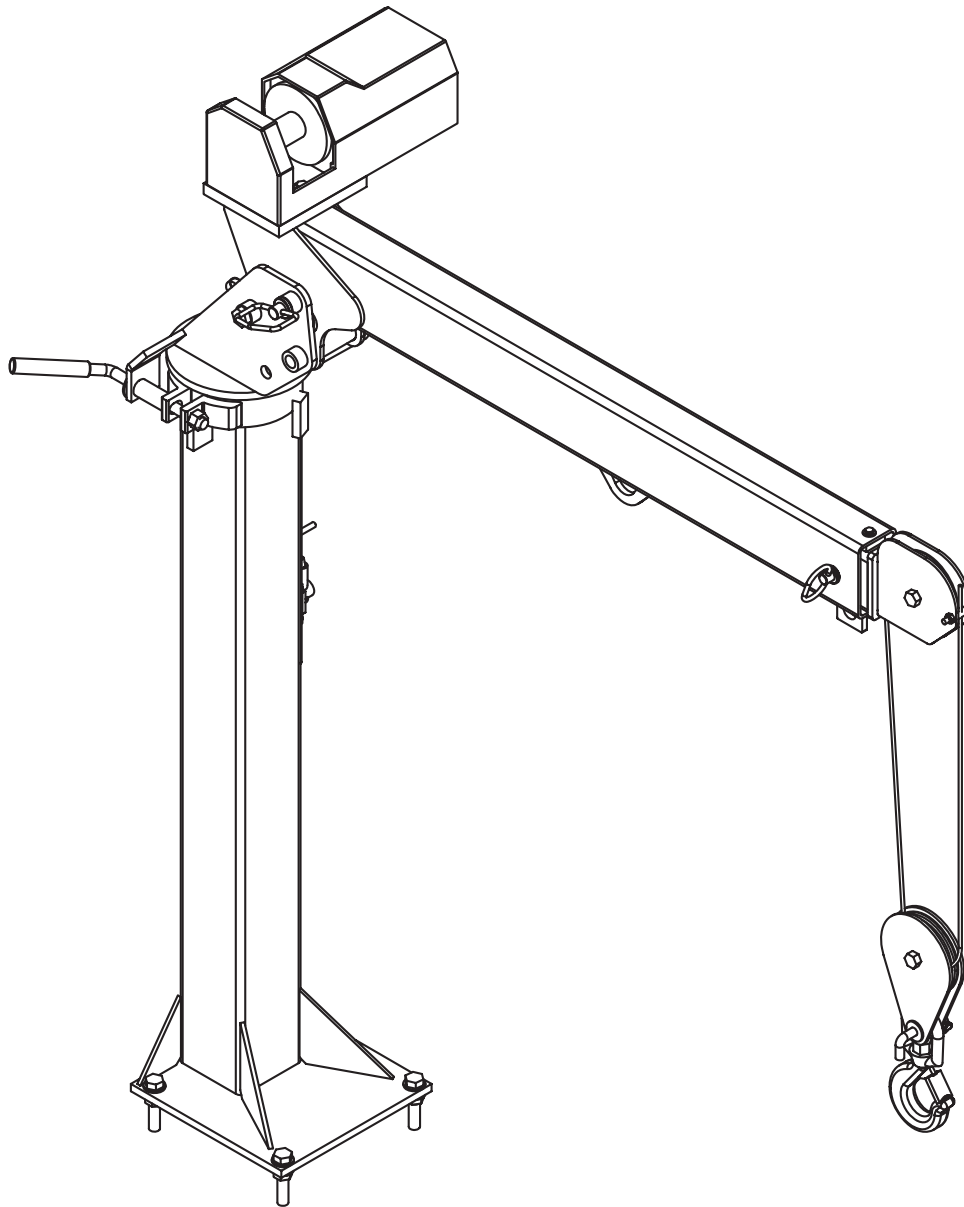




MODEL EC2000

TELESCOPIC CRANE OWNERS' MANUAL

Installation • Assembly Drawings • Parts



Stellar Industries, Inc.

190 State Street

PO Box 169

Garner, IA 50438

800-321-3741

Fax: 641-923-2811

www.stellarindustries.com

Subject to Change without Notification.
© 2012 Stellar Industries, Inc.

Last Revision: 01/23/12

EC2000 Manual Revisions

Date of Revision	Section Revised	Description of Revision

Table of Contents

Chapter 1 - Specifications	1
Capacity Chart - Decal PN 18039	2
Chapter 2 - Installation	3
Wiring Schematic - Power Rotation	4
Wiring Schematic - Manual Rotation	4
Control Kit Power Rotation - PN 22930	5
Stability Procedure	6
Stability Capacity Chart	7
Decal Kit - PN 18776	8
Decals of Note	8
Chapter 3 - Assembly Drawings	9
Standard Crane Assembly - PN 17631	9
50' Wire Rope Crane Assembly - PN 33939	10
Short Mast Crane Assembly - PN 19146	11
Power Rotation Crane Assembly - PN 22601	12
Power Rotation/Short Mast Crane Assembly - PN 24906	13
LH Mount Crane Assembly - PN 56658	14
Control Kit Assembly	15
Chapter 4 - Replacement Parts	17

Find a Dealer Near You:

<http://www.stellarindustries.com/pages/dist/distsearch.htm>

For Technical Questions, Information, Parts, or Warranty, Call Toll-Free at

800-321-3741

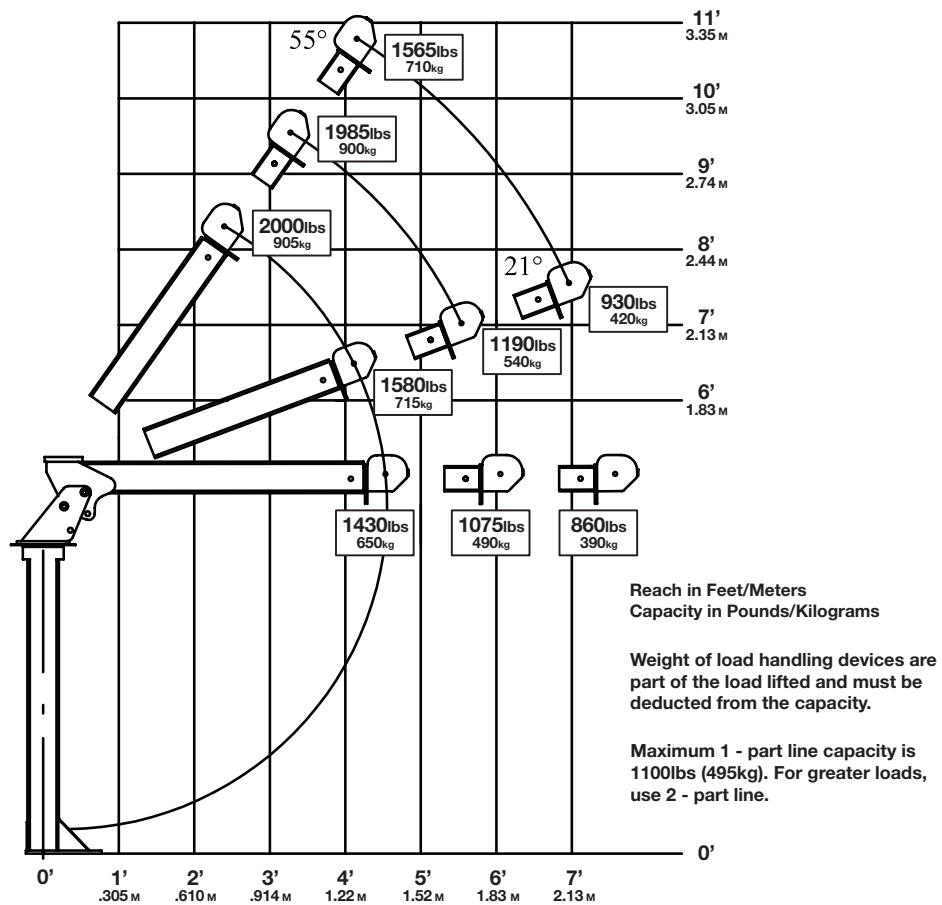
Hours: Monday - Friday, 8:00 a.m. - 5:00 p.m. CST

Or email at the following addresses:

Technical Questions, and Information
Order Parts
Warranty Information

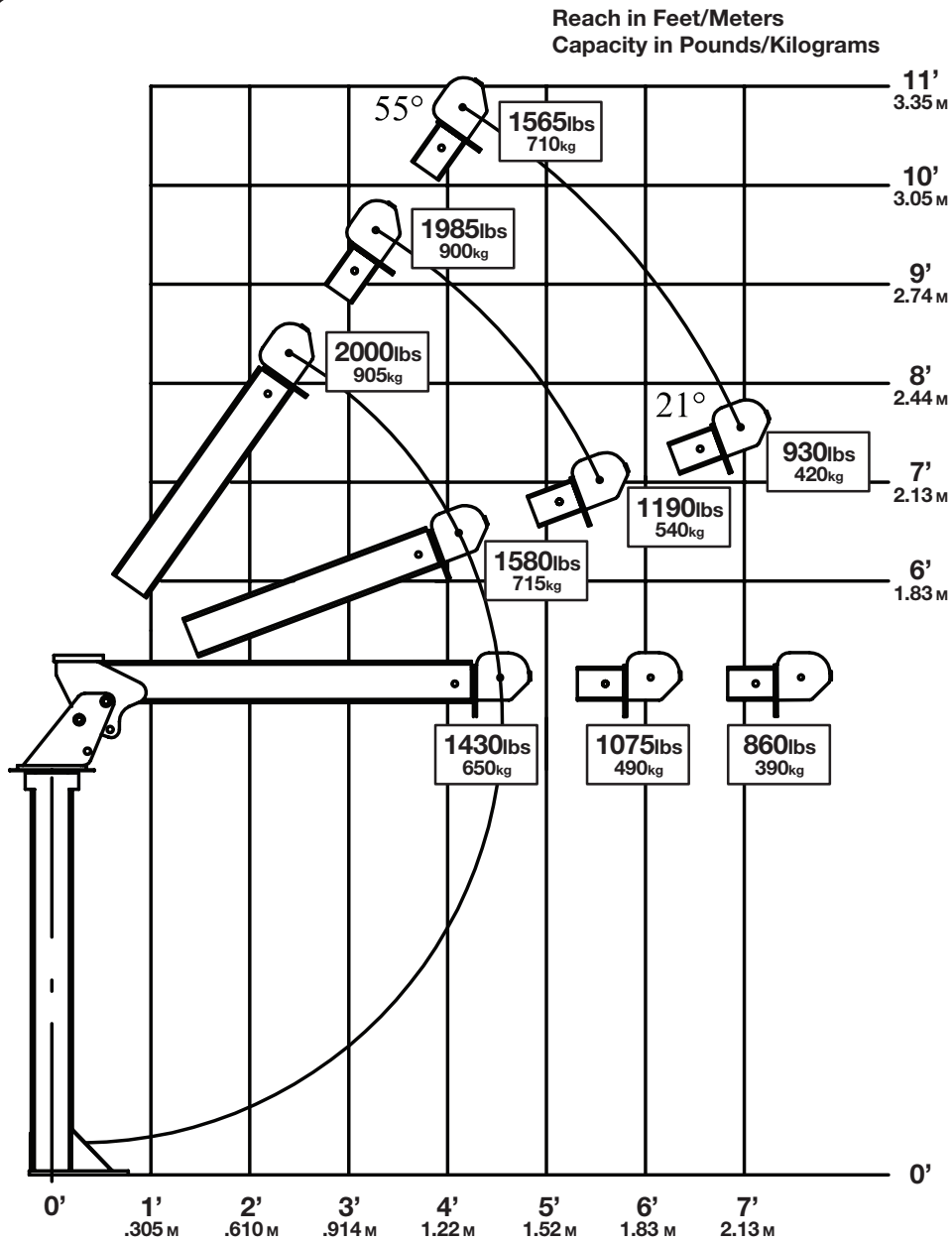
service@stellarindustries.com
parts@stellarindustries.com
warranty@stellarindustries.com

Chapter 1 - Specifications



Crane Rating:	6500 ft-lb (.899 TM)
Standard Boom Length:	4' (1.219 m) from CL of Crane
Boom Extension:	1st Position: Manual 18" (45.7 cm) 2nd Position: Manual 18" (45.7 cm)
Maximum Horizontal Reach:	7' (2.13 m) from CL of Crane
Maximum Vertical Lift (from crane base):	10'9" (3.28 m)
Boom Elevation:	0 to +21 to +56 degrees
Winch Specification	
Rope Diameter:	3/16" (.476 cm)
Line Pull Speed:	20 ft/min (6.10 m)
Max. Single Part Line:	1100 lbs (495 kg)
Max. Double Part Line:	2000 lbs (905 kg)
Manual Rotation:	340° Manual
Power Rotation:	314° Power
Lifting Capacities:	1580 lbs @ 4' (715 kg @ 1.219 m) 1190 lbs @ 5'6" (540 kg @ 1.676 m) 930 lbs @ 7' (420 kg @ 2.13 m)
Stowed Height:	60" (152.4 cm)
Crane Only:	30" (76.2 cm) - Short Mast
Mounting Space Required:	12" x 12" (30.5 cm x 30.5 cm)
Approximate Crane Weight:	275 lbs (124.7 kg) 230 lbs (104.3 kg) - Short Mast 300 lbs (136.1 kg) - Power Rotation

Capacity Chart - Decal PN 18039



Weight of load handling devices are part of the load lifted and must be deducted from the capacity.

Maximum 1 - part line capacity is 1100lbs (495kg). For greater loads, use 2 - part line.



PN 18039

Chapter 2 - Installation

Notice: Read this Page Before Installation of the Crane

Installation Instructions:

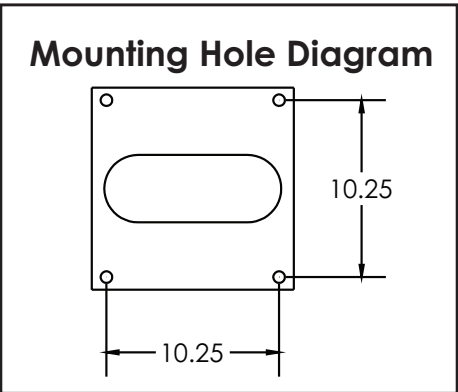
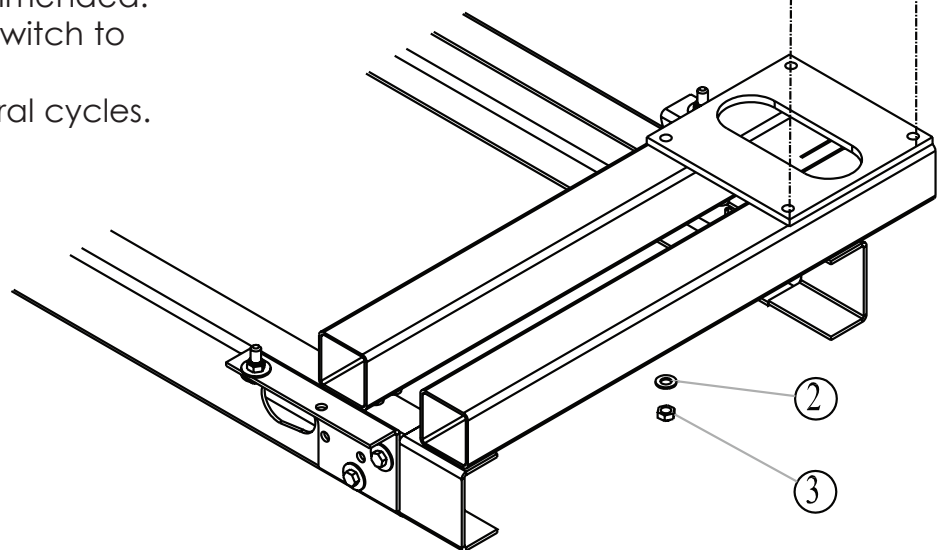
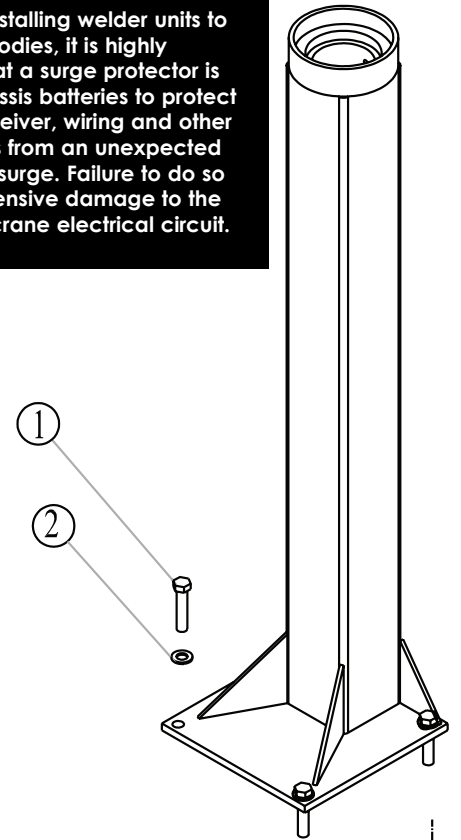
Prepare Platform For Crane Installation (Not Supplied)

1. When designing the platform, maintain a proper clearance for the crane mounting and operation.
2. The platform must be strong enough to support the crane and rated load.
3. Platform/crane support minimum requirements: Top plate should be made from 0.50" grade 50 plate. The structure should be supported by 4 x 4 x 3/16 tubing.

Mounting Instructions:

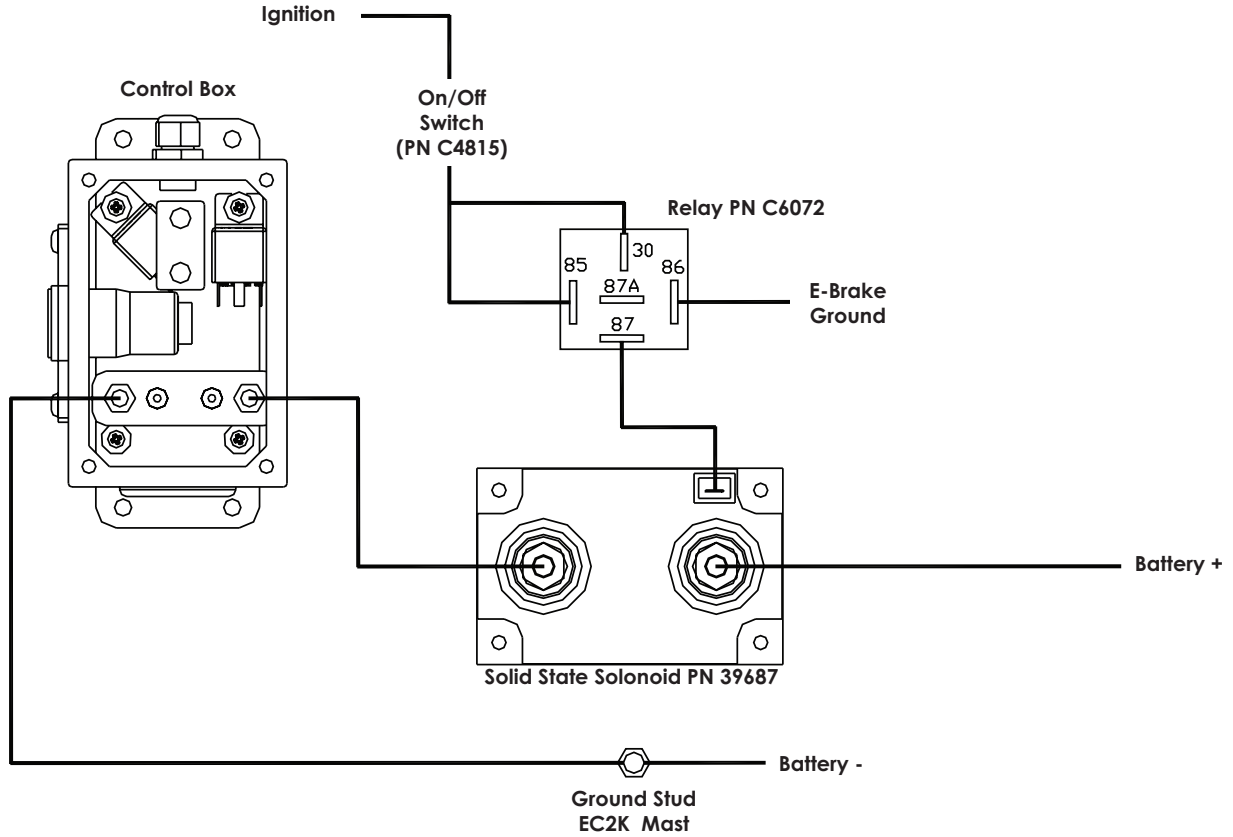
1. Lower the crane onto the mounting platform.
2. Mount the crane using 5/8" grade 8 bolts, flat washers, and nyloc nuts.
3. Connect power (+12V) and ground wires per winch manufacturer's specifications. Power Rotation: Route 4 ga. wires (not included) from junction box to power (+12V) and ground. Recommended: Use solenoid and a toggle switch to power the crane.
4. Operate the crane for several cycles.

Important: When installing welder units to the service bodies, it is highly recommended that a surge protector is installed on the chassis batteries to protect the crane radio receiver, wiring and other electronic devices from an unexpected electrical spike or surge. Failure to do so could result in extensive damage to the service body and crane electrical circuit.

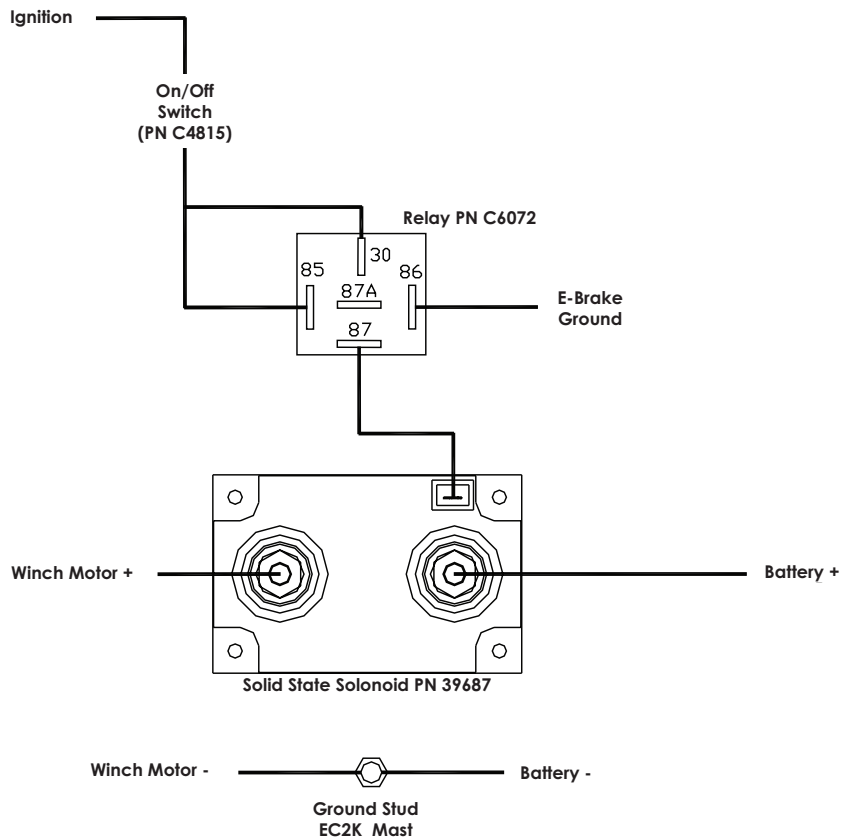


Item No.	Part No.	Description	Qty.
1	D1034	CAP SCR 0.63-11 X 3.00 HHGR8 ZY	4
2	C5902	WASHER 0.63 FLAT GR8	8
3	2826	NUT 0.63-11 HH NYLOC	4

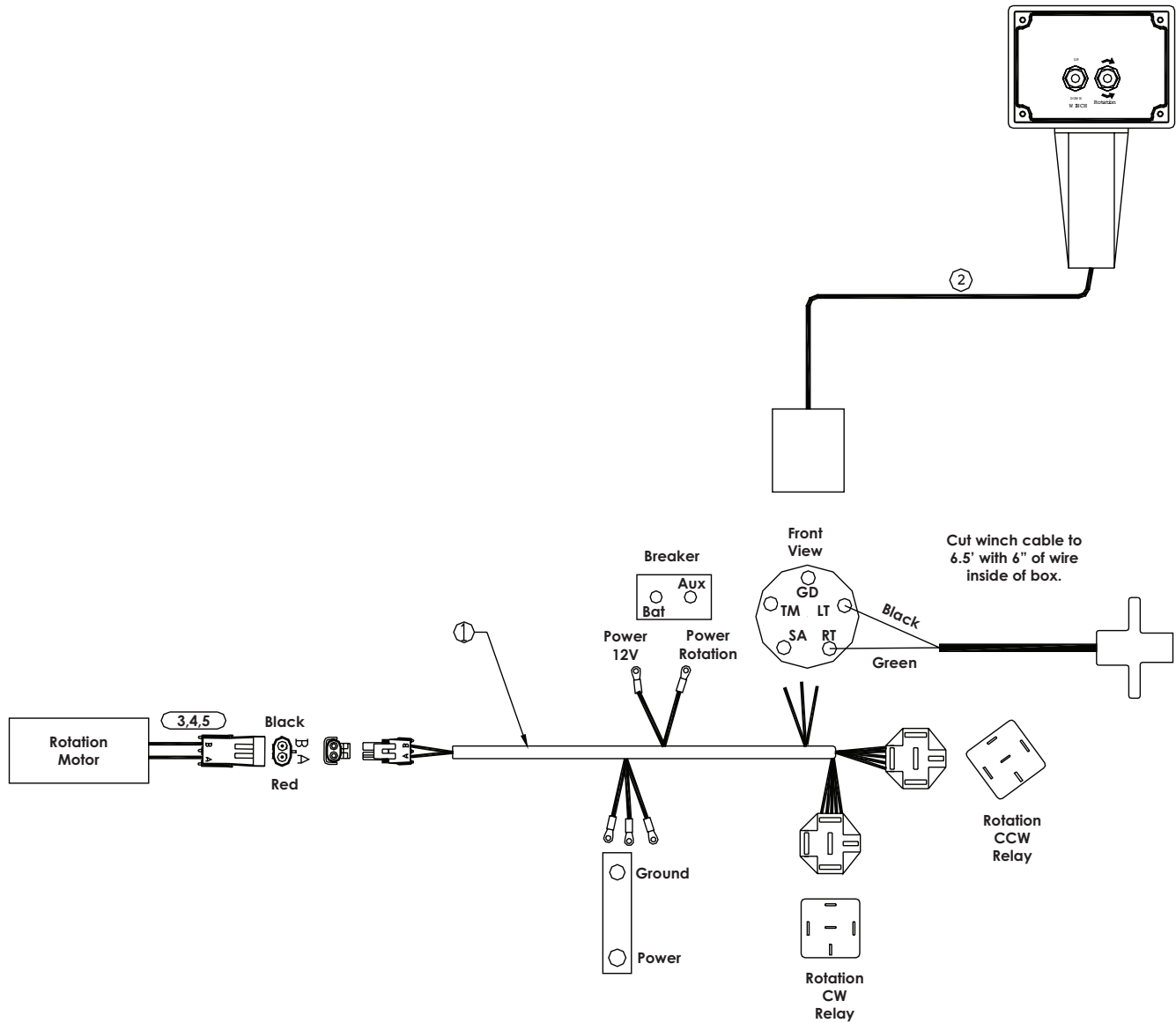
Wiring Schematic - Power Rotation



Wiring Schematic - Manual Rotation



Control Kit Power Rotation - PN 22930



PN 22930

ITEM	PART NO.	DESCRIPTION	QTY
01	28834	WIRE HARNESS	1
02	22932	HANDLE ASM 2 FCTN EC2K POWER	1
03	9751	CONNECT 2 PIN SHROUD PACKARD	1
04	11359	CABLE SEAL 14-16 PACKARD 39001	2
05	13564	CONTACT M TERM SHROUD 12 32038	2

Stability Procedure

Definition of Stability for the Stellar Telescopic Crane Products:

A truck is stable until the load cannot be lifted off the ground with the winch, without tipping over the truck. Every Stellar crane installed must be tested for stability to determine the actual load capacity of the final truck package. The actual test data must be recorded and supplied with the truck at the time of in-service and should be kept with the truck at all times. The following procedure will test the truck package for stability and will provide a stability capacity chart. The load limit information shown on the stability capacity chart is formulated on 85% tipping.

Set Up:

1. Locate the truck on a test course in position for loading and engage travel brakes.
2. Set stabilizers so that they make contact with firm, level footings.
3. Operate the crane under partial load to assure operator proficiency and proper machine function.

EC2000 Stability Data

Max Horizontal Reach: 180" (From the center of rotation to boom tip)
Stability Test Weight: 875 lbs.

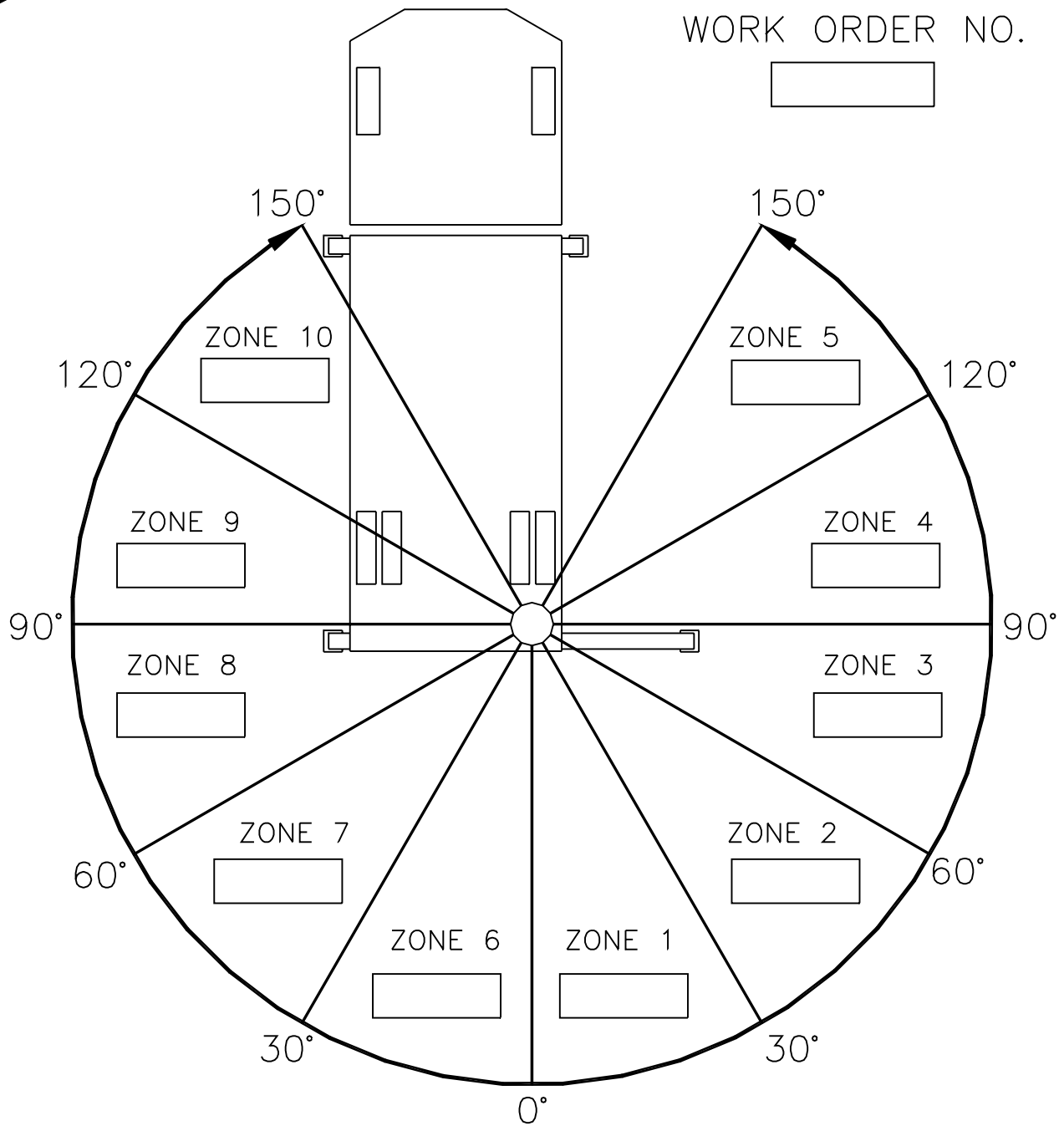
Test Procedure

1. Rotate the crane into Zone 1 position.
2. With the crane fully retracted and the boom horizontal, winch the test weight off the ground. Note: Keep weight within six inches of the ground at all times.
3. Extend the boom outward until full extension has been reached or until the truck becomes unstable (Again, use the winch to keep the weight within six inches of the ground.)
4. If the boom goes full extension without becoming unstable, the crane is termed stable for this zone and 100% can be written in the Zone 1 data box.
5. If the truck becomes unstable prior to going full extension, retract the boom until the truck becomes stable and measure the horizontal reach in this position (center of rotation to boom tip). This is the stable horizontal reach for this zone. Stable horizontal reach divided by Maximum horizontal reach multiplied by 100 equals the percentage of rated capacity for this zone. Use the following formula to determine the percentage of rated capacity:

$$\frac{\text{Stable Horizontal Reach}}{\text{Max Horizontal Reach}} \times 100 = \text{Percentage of Rated}$$

6. Record this number in the data box for Zone 1. This is the revised capacity due to stability for this zone.
7. Repeat this procedure for each zone until the worksheet is completed.
8. This is the revised capacity based on stability of this package.

Stability Capacity Chart

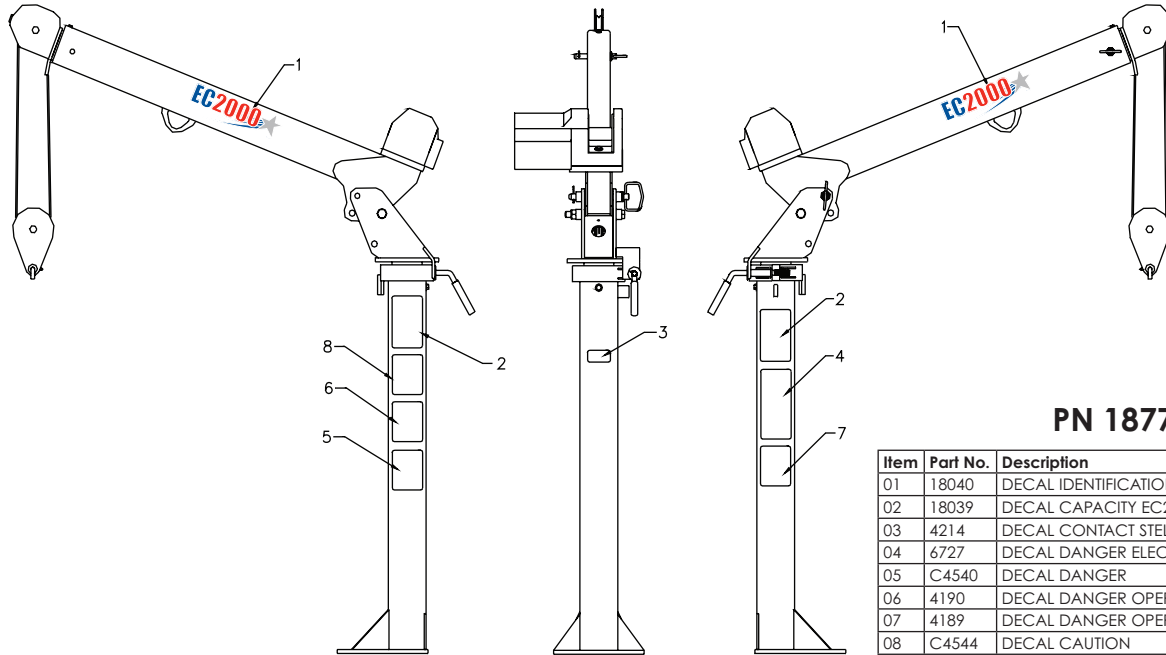


BOXES TO BE FILLED IN WITH PERCENTAGE OF RATED CAPACITY IN THE APPROPRIATE REGION.

STABILITY CAPACITY CHART

STABILITY is based on this specific truck package.

Decal Kit - PN 18776



PN 18776

Item	Part No.	Description	QTY
01	18040	DECAL IDENTIFICATION EC2K	2
02	18039	DECAL CAPACITY EC2K	2
03	4214	DECAL CONTACT STELLAR	1
04	6727	DECAL DANGER ELECTROCUTION VERT	1
05	C4540	DECAL DANGER	1
06	4190	DECAL DANGER OPERATION CONDITION	1
07	4189	DECAL DANGER OPERATION RESTRICTION	1
08	C4544	DECAL CAUTION	1

Decals of Note

! DANGER

FAILURE TO OBEY THE FOLLOWING WILL RESULT IN

DEATH OR SERIOUS INJURY

INSTABILITY OR STRUCTURAL DAMAGE

- Read, understand and follow the equipment load and work area charts.
- Do not exceed winch or equipment ratings.
- Weights of accessories attached to the boom or loadline must be deducted from the load chart ratings or be added to the load weight.
- Do not exceed jib load ratings at reduced boom lengths.

4189

! DANGER

FAILURE TO OBEY THE FOLLOWING WILL RESULT IN

DEATH OR SERIOUS INJURY

- Follow all recommended inspections and maintenance practices listed in the equipment manufacturer's manuals. If manuals are missing from this equipment, contact manufacturer for replacement.
- Do not modify or alter this equipment without written manufacturer's approval. Use only manufacturer approved attachments or parts on this equipment.
- Equipment must be mounted on factory recommended chassis. If re-mounted or rebuilt, the equipment must be re-certified.

4190

! DANGER

ELECTROCUTION HAZARD
THIS CRANE IS NOT INSULATED

DEATH OR SERIOUS INJURY
WILL RESULT FROM CONTACT OR INADEQUATE CLEARANCE

- Main safe clearances from electrical lines. This crane does not provide protection from contact with or proximity to an electrically charged conductor. Allow for boom, electrical line and load line swaying.
- Maintain a clearance of at least 10 feet between any part of the crane, load line or load and any electrical line carrying up to 50,000 volts.
- One foot additional clearance is required for every additional 30,000 volts or less.

! DANGER

AN UNTRAINED OPERATOR
SUBJECTS HIMSELF AND OTHERS TO

DEATH OR SERIOUS INJURY

YOU MUST NOT OPERATE THIS EQUIPMENT UNLESS

- You have been trained in the safe operation of this equipment.
- You read, understand and follow the safety and operating recommendations contained in the equipment manufacturer's manuals, your employer's work rules and applicable government regulations.

C4540

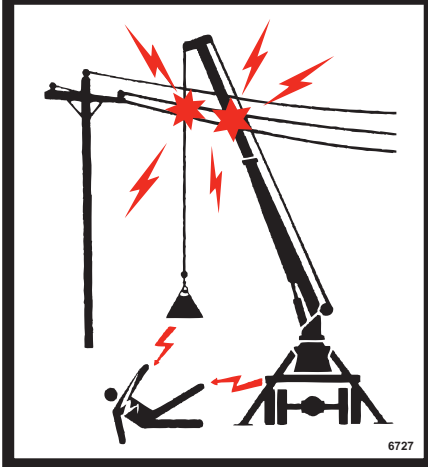
! DANGER

FAILURE TO OBEY THE FOLLOWING WILL RESULT IN

DEATH OR SERIOUS INJURY

- Inspect equipment and its operation daily.
- For equipment stability, use only on solid, level surface with outriggers properly extended.
- Equipment must be level.
- Operate all controls slowly and smoothly.
- Never operate the equipment with personnel under boom or load.
- Keep load underboom tip. Do not side load boom or drag loads. Avoid free swinging loads.
- Keep at least 3 wraps of loadline on winch drum.
- For travel, boom and outriggers must be in stowed position.

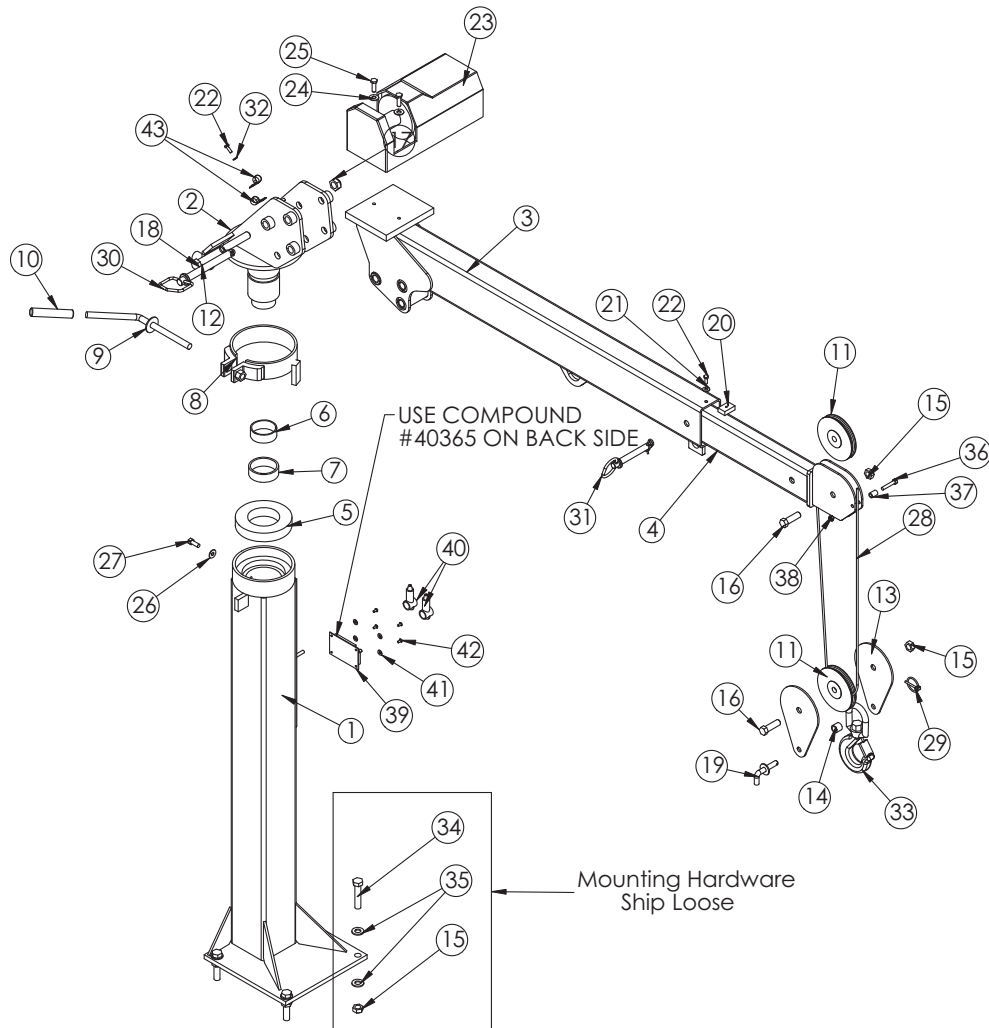
C4544



6727

Chapter 3 - Assembly Drawings

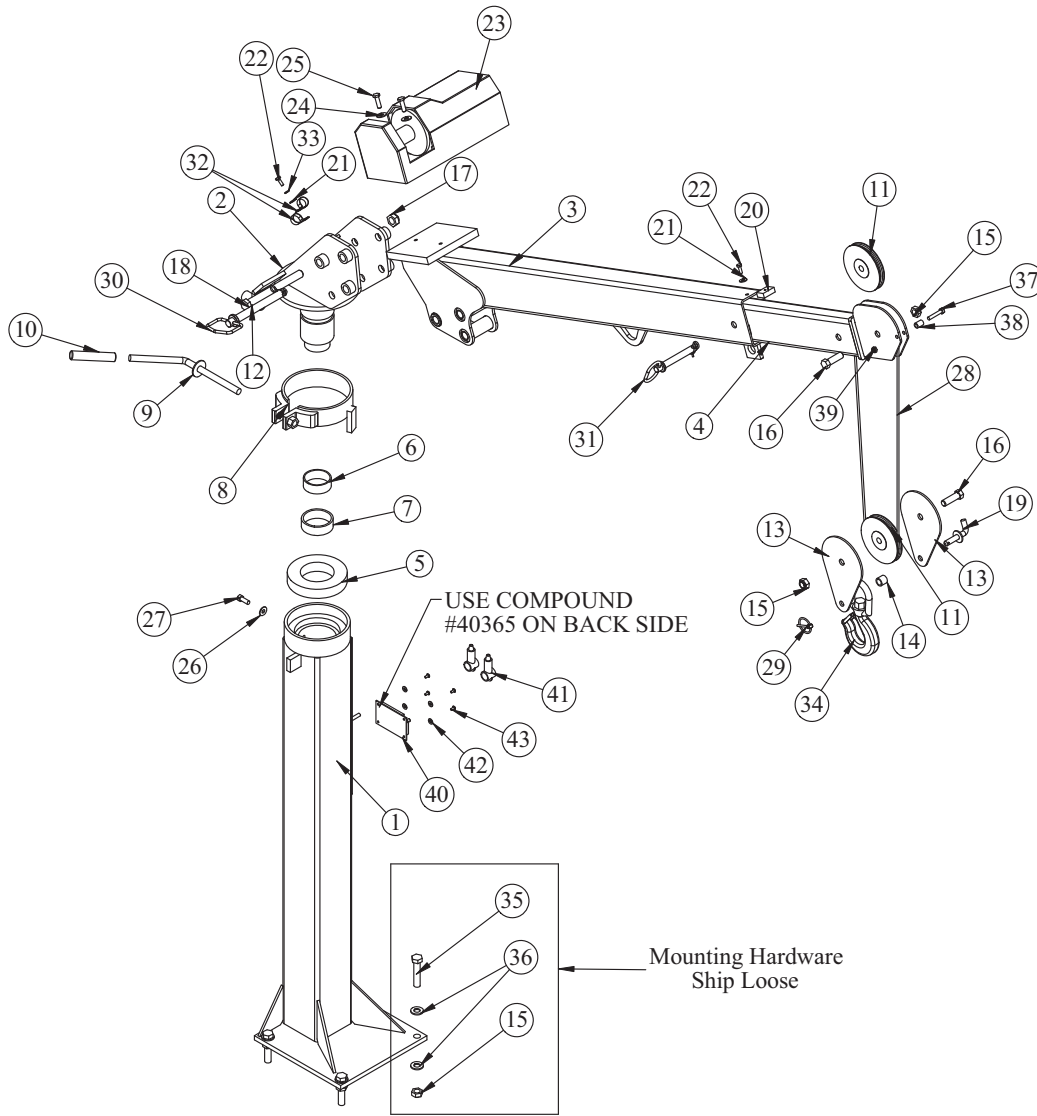
Standard Crane Assembly - PN 17631



PN 17631

ITEM	PART	DESCRIPTION	QTY.	ITEM	PART	DESCRIPTION	QTY.
1	39693	BASE EC2K	1	23	18774	WINCH 1000 03002	1
2	17600PC	MAST EC2K	1	24	C6353	WASHER 0.38 FLAT GR8	2
3	39691	MAIN BOOM EC2K	1	25	13576	CAP SCR 0.38-16X1.25 HHGR8	2
4	39690	EXT BOOM EC2K	1	26	0346	WASHER 0.38 FLAT	1
5	18069	BEARING RADIAL BALL 6" BRB6217-2RS	1	27	0351	CAP SCR 0.38-16X1.00 HHGR5	1
6	18068	RACE INNER 2.50" TORIR-4016	1	28	18773	WIRE ROPE 3/16 7X19 GAC 40FT	1
7	18067	BEARING DRAWN CUP NEEDLE 2.75" TORB-4416	1	29	5753	PIN 0.19X1.56 LYNCH	1
8	18475PC	BRAKE WELDMENT EC2K	1	30	18778	PIN HITCH 0.75X6.25 W LANYARD	1
9	18483PC	HANDLE WELDMENT EC2K	1	31	18777	PIN HITCH 0.63X4.00 W LANYARD	1
10	18485	HANDLE GRIP EC2K	1	32	0521	WASHER 0.25 LOCK	1
11	17222	SHEAVE EC2K 5.00 DIA .19R/.75 THK	2	33	C6018	HOOK CRANE-3 TON	1
12	18711PC	PIPE 0.75 SCH40X2.38	1	34	D1034	CAP SCR 0.63-11 X 3.00 HHGR8 ZY	4
13	17965PC	PLATE EC2K SNATCH BLOCK	2	35	C5902	WASHER 0.63 SAE FLAT YELLOW GR8	8
14	18036PC	SPACER SNATCH BLOCK EC2K	1	36	0487	CAP SCR 0.31-18X1.75 HHGR5	1
15	2826	NUT 0.63-11 HH NYLOC	6	37	19374PC	SPACER BOOM TIP EC2K	1
16	0399	CAP SCR 0.63-11X2.00 HHGR5	2	38	0342	NUT 0.31-18 HH NYLOC	1
17	C0538	NUT 0.75-10 HHGR8 NYLOC	1	39	39687	SOLENOID SOLID STATE SSC 10-100	1
18	18712	CAP SCR 0.75-10X7.50 HHGR8 ZY	1	40	37751	BOOT TERML SOLENOID SOLID TB-22-2	2
19	18714PC	PIN WELDMENT LATCHING	1	41	5290	WASHER #8 SAE FLAT ZINC	4
20	18715PC	STOP EXT EC2K	1	42	62792	SCREW #8-32X0.63 BTNHD SS	4
21	0340	WASHER 0.25 FLAT	2	43	C0078	HOSE CLAMP #8 RUBBER COATED	2
22	0479	CAP SCR 0.25-20X0.75 HHGR5	2				

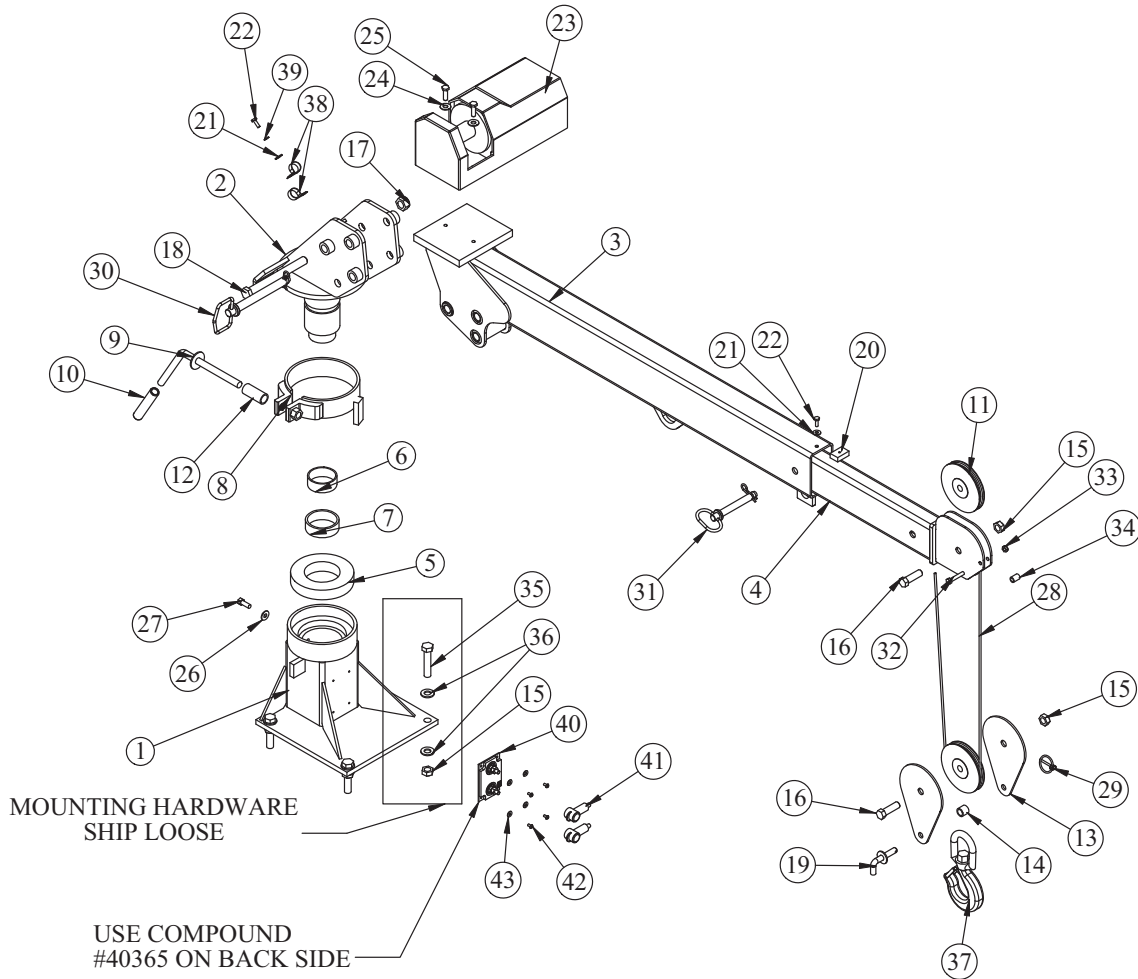
50' Wire Rope Crane Assembly - PN 33939



PN 33939

ITEM	PART	DESCRIPTION	QTY.	ITEM	PART	DESCRIPTION	QTY.
1	39693	BASE EC2K	1	23	18774	WINCH 1000 03002	1
2	17600PC	MAST EC2K	1	24	C6353	WASHER 0.38 FLAT GR8	2
3	39691	MAIN BOOM EC2K	1	25	13576	CAP SCR 0.38-16X1.25 HHGR8	2
4	39690	EXT BOOM EC2K	1	26	0346	WASHER 0.38 FLAT	1
5	18069	BEARING RADIAL BALL 6" BRB6217-2RS	1	27	0351	CAP SCR 0.38-16X1.00 HHGR5	1
6	18068	RACE INNER 2.50" TORIR-4016	1	28	33940	WIRE ROPE 3/16 7X19 IWRC-XIP 50 FT	1
7	18067	BEARING DRAWN CUP NEEDLE 2.75" TORB-4416	1	29	5753	PIN 0.19X1.56 LYNCH	1
8	18475PC	BRAKE WELDMENT EC2K	1	30	18778	PIN HITCH 0.75X6.25 W/ LANYARD	1
9	18483PC	HANDLE WELDMENT EC2K	1	31	18777	PIN HITCH 0.63X4.00 W/ LANYARD	1
10	18485	HANDLE GRIP EC2K	1	32	C5946	HOSE CLAMP #8 RUBBER COATED	2
11	17222	SHEAVE EC2K 5.00 DIA .19R/.75 THK	2	33	0521	WASHER 0.25 LOCK	1
12	18711PC	PIPE 0.75 SCH40X2.38	1	34	C6018	HOOK CRANE-3 TON	1
13	17965PC	PLATE EC2K SNATCH BLOCK	2	35	D1034	CAP SCR 0.63-11 X 3.00 HHGR8 ZY	4
14	18036PC	SPACER SNATCH BLOCK EC2K	1	36	C5902	WASHER 0.63 SAE FLAT YELLOW GR8	8
15	2826	NUT 0.63-11 HH NYLOC	6	37	0487	CAP SCR 0.31-18X1.75 HHGR5	1
16	0399	CAP SCR 0.63-11X2.00 HHGR5	2	38	19374PC	SPACER BOOM TIP EC2K	1
17	C0538	NUT 0.75-10 HHGR8 NYLOC	1	39	0342	NUT 0.31-18 HH NYLOC	1
18	18712	CAP SCR 0.75-10X7.50 HHGR8 ZY	1	40	39687	SOLENOID SOLID STATE SSC 10-100	1
19	18714PC	PIN WELDMENT LATCHING	1	41	37751	BOOT TERML SOLENOID SOLID TB-22-2	2
20	18715PC	STOP EXT EC2K	1	42	5290	WASHER #8 SAE FLAT ZINC	4
21	0340	WASHER 0.25 FLAT	2	43	62792	SCREW #8-32X0.63 BTNHD SS	4
22	0479	CAP SCR 0.25-20X0.75 HHGR5	2				

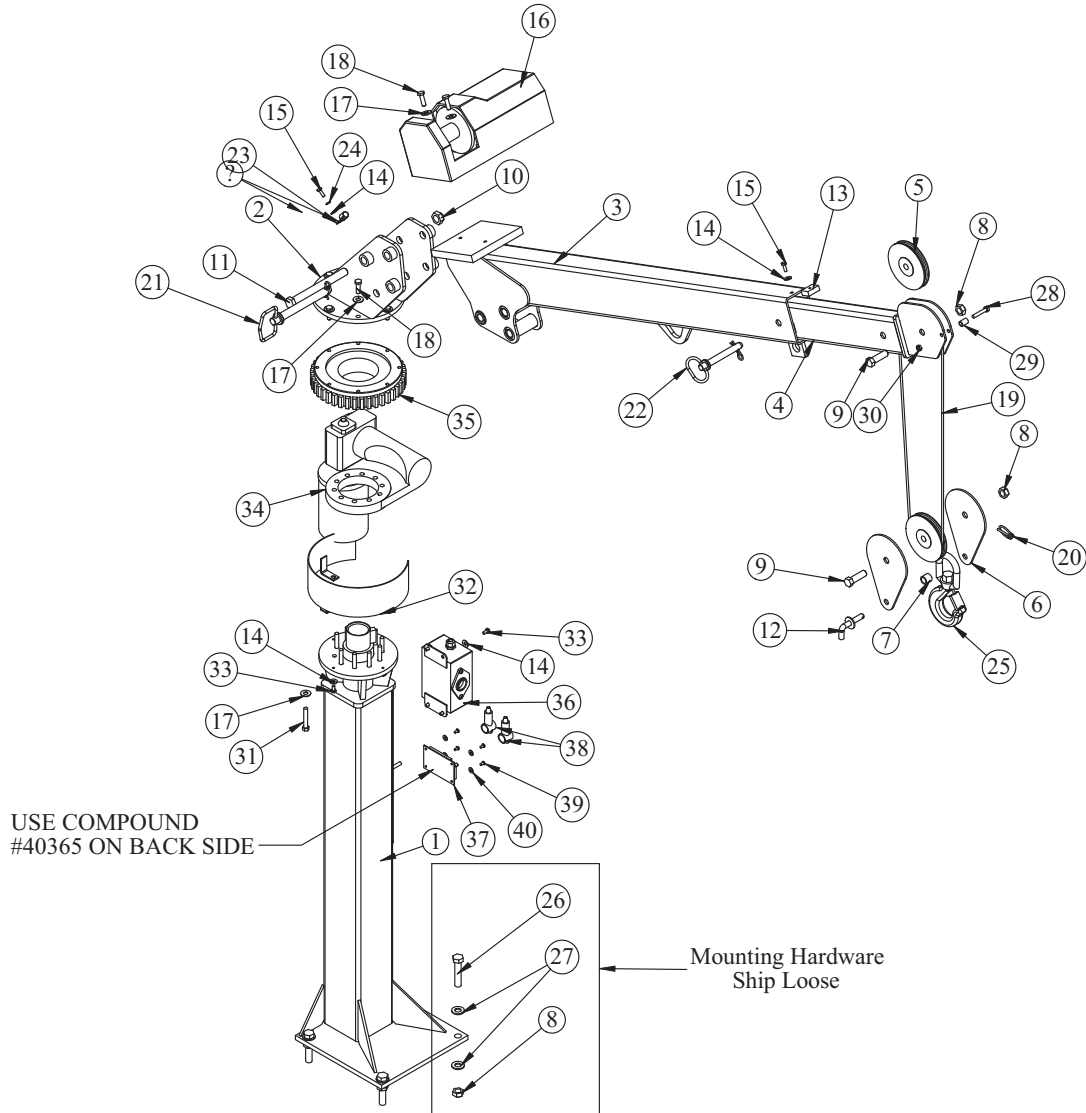
Short Mast Crane Assembly - PN 19146



PN 19146

ITEM	PART	DESCRIPTION	QTY.	ITEM	PART	DESCRIPTION	QTY.
1	39703	BASE EC2K SHORT	1	23	18774	WINCH 1000 03002	1
2	17600PC	MAST EC2K	1	24	C6353	WASHER 0.38 FLAT GR8	2
3	39691	MAIN BOOM EC2K	1	25	13576	CAP SCR 0.38-16X1.25 HHGR8	2
4	39690	EXT BOOM EC2K	1	26	0346	WASHER 0.38 FLAT	1
5	18069	BEARING RADIAL BALL 6" BRB6217-2RS	1	27	0351	CAP SCR 0.38-16X1.00 HHGR5	1
6	18068	RACE INNER 2.50" TORIR-4016	1	28	18773	WIRE ROPE 3/16 7X19 GAC 40FT	1
7	18067	BEARING DRAWN CUP NEEDLE 2.75" TORB-4416	1	29	5753	PIN 0.19X1.56 LYNCH	1
8	18475PC	BRAKE WELDMENT EC2K	1	30	18778	PIN HITCH 0.75X6.25 W LANYARD	1
9	18483PC	HANDLE WELDMENT EC2K	1	31	18777	PIN HITCH 0.63X4.00 W LANYARD	1
10	18485	HANDLE GRIP EC2K	1	32	0487	CAP SCR 0.31-18X1.75 HHGR5	1
11	17222	SHEAVE EC2K 5.00 DIA .19R/.75 THK	2	33	0342	NUT 0.31-18 HH NYLOC	1
12	18711PC	PIPE 0.75 SCH40X2.38	1	34	19374PC	SPACER BOOM TIP EC2K	1
13	17965PC	PLATE EC2K SNATCH BLOCK	2	35	D1034	CAP SCR 0.63-11 X 3.00 HHGR8 ZY	4
14	18036PC	SPACER SNATCH BLOCK EC2K	1	36	C5902	WASHER 0.63 SAE FLAT YELLOW GR8	8
15	2826	NUT 0.63-11 HH NYLOC	6	37	C6018	HOOK CRANE-3 TON	1
16	0399	CAP SCR 0.63-11X2.00 HHGR5	2	38	C5946	HOSE CLAMP #8 RUBBER COATED	2
17	2828	NUT 0.75-10 HH NYLOC	1	39	0521	WASHER 0.25 LOCK	1
18	18712	CAP SCR 0.75-10X7.50 HHGR8 ZY	1	40	39687	SOLENOID SOLID STATE SSC 10-100	1
19	18714PC	PIN WELDMENT LATCHING	1	41	37751	BOOT TERML SOLENOID SOLID TB-22-2	2
20	18715PC	STOP EXT EC2K	1	42	62792	SCREW #8-32X0.63 BTNHD SS	4
21	0340	WASHER 0.25 FLAT	2	43	5290	WASHER #8 SAE FLAT ZINC	4
22	0479	CAP SCR 0.25-20X0.75 HHGR5	2				

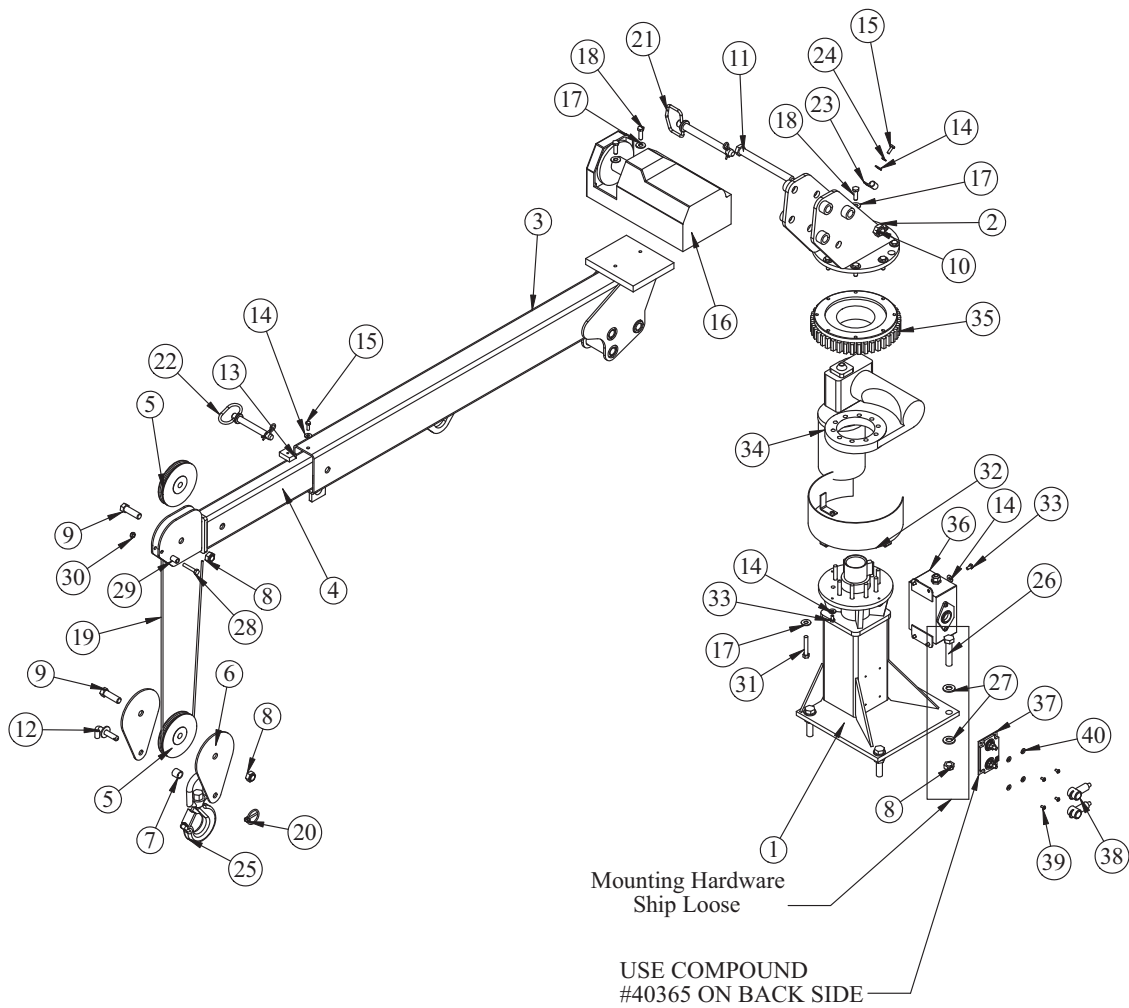
Power Rotation Crane Assembly - PN 22601



PN 22601

ITEM	PART	DESCRIPTION	QTY.	ITEM	PART	DESCRIPTION	QTY.
1	39688	BASE EC2K POWER	1	22	18777	PIN HITCH 0.63X4.00 W/ LANYARD	1
2	22608PC	MAST EC2K POWER ROTATION	1	23	C0081	CLAMP 0.50 BLK VINYL	1
3	39691	MAIN BOOM EC2K	1	24	0521	WASHER 0.25 LOCK	1
4	39690	EXT BOOM EC2K	1	25	C6018	HOOK CRANE-3 TON	1
5	17222	SHEAVE EC2K 5.00 DIA .19R/.75 THK	2	26	D1034	CAP SCR 0.63-11 X 3.00 HHGR8 ZY	4
6	17965PC	PLATE EC2K SNATCH BLOCK	2	27	C5902	WASHER 0.63 SAE FLAT YELLOW GR8	8
7	18036PC	SPACER SNATCH BLOCK EC2K	1	28	0487	CAP SCR 0.31-18X1.75 HHGR5	1
8	2826	NUT 0.63-11 HH NYLOC	6	29	19374PC	SPACER BOOM TIP EC2K	1
9	0399	CAP SCR 0.63-11X2.00 HHGR5	2	30	0342	NUT 0.31-18 HH NYLOC	1
10	C0538	NUT 0.75-10 HHGR8 NYLOC	1	31	22924	CAP SCR 0.38-16X2.25 HHGR8	10
11	18712	CAP SCR 0.75-10X7.50 HHGR8 ZY	1	32	22616PC	GUARD TTB EC2K	1
12	18714PC	PIN WELDMENT LATCHING	1	33	0478	CAP SCR 0.25-20X0.50 HHGR5	7
13	18715PC	STOP EXT EC2K	1	34	22612	BEARING HOUSING SD14511S	1
14	0340	WASHER 0.25 FLAT	9	35	22613	BEARING GEAR SY7B0101N-10-B	1
15	0479	CAP SCR 0.25-20X0.75 HHGR5	2	36	22930PC	CONTROL KIT EC2K POWER	1
16	18774	WINCH 1000 03002	1	37	39687	SOLENOID SOLID STATE SSC 10-100	1
17	C6353	WASHER 0.38 FLAT GR8	20	38	37751	BOOT TERML SOLENOID SOLID TB-22-2	2
18	13576	CAP SCR 0.38-16X1.25 HHGR8	10	39	62792	SCREW #8-32X0.63 BTNHD SS	4
19	18773	WIRE ROPE 3/16 7X19 GAC 40FT	1	40	5290	WASHER #8 SAE FLAT ZINC	4
20	5753	PIN 0.19X1.56 LYNCH	1				
21	18778	PIN HITCH 0.75X6.25 W/ LANYARD	1				

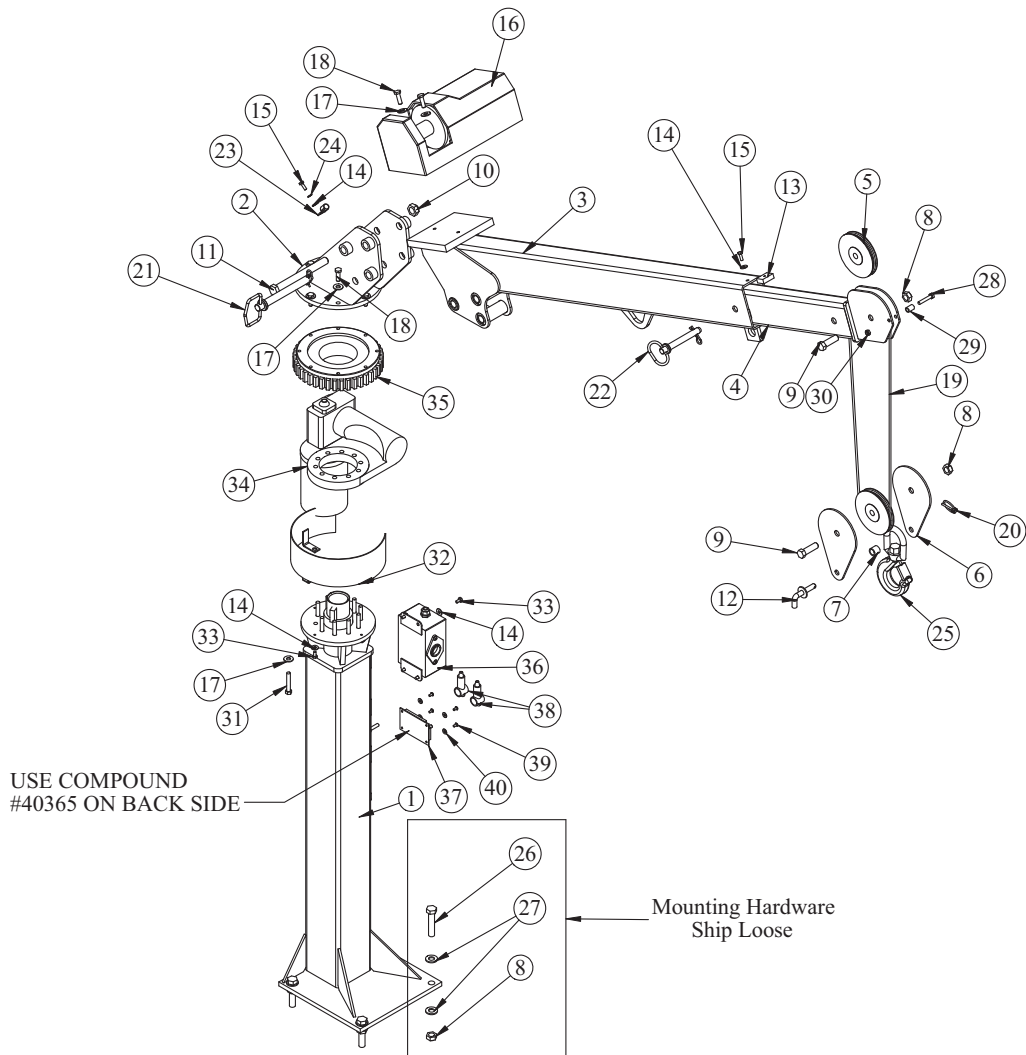
Power Rotation Short Mast Crane Assembly - PN 24906



PN 24906

ITEM	PART	DESCRIPTION	QTY.	ITEM	PART	DESCRIPTION	QTY.
1	39696PC	BASE EC2K POWER SHORT	1	21	18778	PIN HITCH 0.75X6.25 W\ LANYARD	1
2	22608PC	MAST EC2K POWER ROTATION	1	22	18777	PIN HITCH 0.63X4.00 W\ LANYARD	1
3	39691PC	MAIN BOOM EC2K	1	23	C0081	CLAMP 0.50 BLK VINYL	1
4	39690PC	EXT BOOM EC2K	1	24	0521	WASHER 0.25 LOCK	1
5	17222	SHEAVE EC2K 5.00 DIA .19R/.75 THK	2	25	C6018	HOOK CRANE-3 TON	1
6	17965PC	PLATE EC2K SNATCH BLOCK	2	26	D1034	CAP SCR 0.63-11 X 3.00 HHGR8 ZY	4
7	18036PC	SPACER SNATCH BLOCK EC2K	1	27	C5902	WASHER 0.63 SAE FLAT YELLOW GR8	8
8	2826	NUT 0.63-11 HH NYLOC	6	28	0487	CAP SCR 0.31-18X1.75 HHGR5	1
9	0399	CAP SCR 0.63-11X2.00 HHGR5	2	29	19374PC	SPACER BOOM TIP EC2K	1
10	C0538	NUT 0.75-10 HHGR8 NYLOC	1	30	0342	NUT 0.31-18 HH NYLOC	1
11	18712	CAP SCR 0.75-10X7.50 HHGR8 ZY	1	31	22924	CAP SCR 0.38-16X2.25 HHGR8	10
12	18714PC	PIN WELDMENT LATCHING	1	32	22616PC	GUARD TTB EC2K	1
13	18715PC	STOP EXT EC2K	1	33	0478	CAP SCR 0.25-20X0.50 HHGR5	7
14	0340	WASHER 0.25 FLAT	9	34	22612	BEARING HOUSING SD14511S	1
15	0479	CAP SCR 0.25-20X0.75 HHGR5	2	35	22613	BEARING GEAR SY7B0101N-10-B	1
16	18774	WINCH 1000 03002	1	36	22930	CONTROL KIT EC2K POWER	1
17	C6353	WASHER 0.38 FLAT GR8	20	37	39687	SOLENOID SOLID STATE SSC 10-100	1
18	13576	CAP SCR 0.38-16X1.25 HHGR8	10	38	37751	BOOT TERML SOLENOID SOLID TB-22-2	2
19	18773	WIRE ROPE 3/16 7X19 GAC 40FT	1	39	62792	SCREW #8-32X0.63 BTNHD SS	4
20	5753	PIN 0.19X1.56 LYNCH	1	40	5290	WASHER #8 SAE FLAT ZINC	4

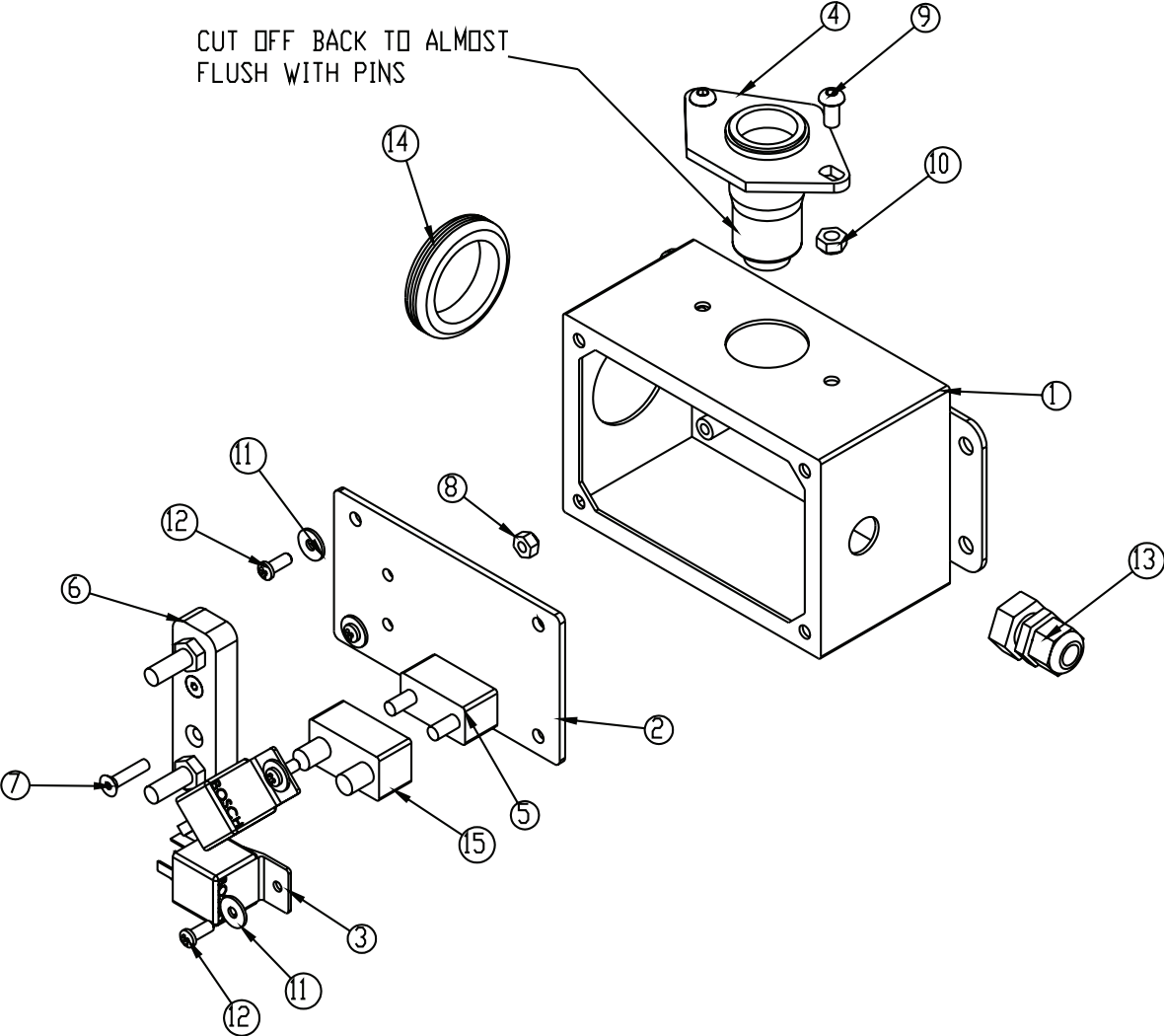
LH Mount Crane Assembly - PN 56658



PN 56658

ITEM	PART	DESCRIPTION	QTY.	ITEM	PART	DESCRIPTION	QTY.
1	56659PC	BASE EC2K POWER LH MNT	1	21	18778	PIN HITCH 0.75X6.25 W\ LANYARD	1
2	22608PC	MAST EC2K POWER ROTATION	1	22	18777	PIN HITCH 0.63X4.00 W\ LANYARD	1
3	39691PC	MAIN BOOM EC2K	1	23	C0081	CLAMP 0.50 BLK VINYL	1
4	39690PC	EXT BOOM EC2K	1	24	0521	WASHER 0.25 LOCK	1
5	17222	SHEAVE EC2K 5.00 DIA .19R/.75 THK	2	25	C6018	HOOK CRANE-3 TON	1
6	17965PC	PLATE EC2K SNATCH BLOCK	2	26	D1034	CAP SCR 0.63-11 X 3.00 HHGR8 ZY	4
7	18036PC	SPACER SNATCH BLOCK EC2K	1	27	C5902	WASHER 0.63 SAE FLAT YELLOW GR8	8
8	2826	NUT 0.63-11 HH NYLOC	6	28	0487	CAP SCR 0.31-18X1.75 HHGR5	1
9	0399	CAP SCR 0.63-11X2.00 HHGR5	2	29	19374PC	SPACER BOOM TIP EC2K	1
10	C0538	NUT 0.75-10 HHGR8 NYLOC	1	30	0342	NUT 0.31-18 HH NYLOC	1
11	18712	CAP SCR 0.75-10X7.50 HHGR8 ZY	1	31	22924	CAP SCR 0.38-16X2.25 HHGR8	10
12	18714PC	PIN WELDMENT LATCHING	1	32	22616PC	GUARD TT8 EC2K	1
13	18715PC	STOP EXT EC2K	1	33	0478	CAP SCR 0.25-20X0.50 HHGR5	7
14	0340	WASHER 0.25 FLAT	9	34	22612	BEARING HOUSING SD14511S	1
15	0479	CAP SCR 0.25-20X0.75 HHGR5	2	35	22613	BEARING GEAR SY780101N-10-B	1
16	18774	WINCH 1000 03002	1	36	22930	CONTROL KIT EC2K POWER	1
17	C6353	WASHER 0.38 FLAT GR8	20	37	39687	SOLENOID SOLID STATE SSC 10-100	1
18	13576	CAP SCR 0.38-16X1.25 HHGR8	10	38	37751	BOOT TERML SOLENOID SOLID TB-22-2	2
19	18773	WIRE ROPE 3/16 7X19 GAC 40FT	1	39	62792	SCREW #8-32X0.63 BTNHD SS	4
20	5753	PIN 0.19X1.56 LYNCH	1	40	5290	WASHER #10 SAE FLAT ZINC	4

Control Kit Assembly



ITEM	PART	DESCRIPTION	QTY.	ITEM	PART	DESCRIPTION	QTY.
1	22925	ENCLOSURE 6.00X4.00 MACHINED	1	9	D0561	CAP SCR 0.25-20X0.50 BTNHD SS	2
2	22927	PLATE ELECTRICAL MTG EC2K	1	10	0333	NUT 0.25-20 HHGR5 NYLOC	2
3	C6072	RELAY BOSCH 20-30 AMP	2	11	D0178	WASHER #10 SAE FLAT ZINC	4
4	14994	CONNECTOR SOCKET TRAILER 6 PIN	1	12	6684	CAP SCR #10-32X0.50 SH	4
5	22931	CIRCUIT BREAKER 12V 20 AMP AUTO RES	1	13	12870	STRAIN RELIEF .38 NPT .08-.24 CABLE	1
6	23892	JUNCTION BLOCK 5/16" 2 POST	1	14	23893	GROMENT RUBBER 1.75	1
7	D0896	CAP SCR #10-24X0.75 FSHS SS	2	15	23908	BOOT CIRCUIT BREAKER RED 23540	1
8	C4956	NUT #10-24 HH NYLOC SS	2				

Chapter 4 - Replacement Parts

ASSEMBLY COMPONENTS	
22612	BEARING HOUSING - ROTATION (POWER ROTATION MODELS)
22613	GEAR BEARING - ROTATION (POWER ROTATION MODELS)
18069	BEARING - RADIAL BALL 6.00"
18068	RACE - INNER 2.50"
18067	BEARING DRAWN CUP NEEDLE 2.75"
17222	SHEAVE 5.00" DIA.
18773	WIRE ROPE 40 FT (STANDARD MODELS)
33940	WIRE ROPE 50 FT
18483PC	HANDLE WELDMENT EC2K
18485	HANDLE GRIP EC2K
18715PC	STOP - EXTENSION WELDMENT
18777	HITCH PIN 0.63"X 4.00" W / LANYARD
18778	HITCH PIN 0.75"X 6.25" W / LANYARD
18714PC	PIN WELDMENT - LATCHING
5753	PIN - LYNCH 0.19"X1.56"
C6018	HOOK 3-TON
10709	SAFETY LATCH FOR 3 TON HOOK
ELECTRICAL COMPONENTS	
22932	HANDLE ASM 2 FUNCTION EC2K (POWER ROTATION MODELS)
22620	HANDLE ASM - WINCH FUNCTION ONLY (MANUAL ROTATION)
18774	WINCH
39836	COVER - PLASTIC (WINCH)
39687	SOLENOID - SOLID STATE SSC 10-100
37751	BOOT - SOLID STATE SOLENOID TERMINALS
28834	WIRE HARNESS (POWER ROTATION MODELS)
C6072	BOSCH RELAY (POWER ROTATION MODELS)
22931	CIRCUIT BREAKER (POWER ROTATION MODELS)
23908	BOOT - CIRCUIT BREAKER RED (POWER ROTATION MODELS)
14994	CONNECTOR SOCKET - TRAILER 6 PIN (POWER ROTATION MODELS)
23892	JUNCTION BLOCK 5/16" 2 POST (POWER ROTATION MODELS)



Limited Warranty Statement

Stellar Industries, Inc. (Stellar) warrants products designed and manufactured by Stellar to be free from defects in material and workmanship under proper use and maintenance. Products must be installed and operated in accordance with Stellar's written instructions and capacities. This warranty shall cover the following:

Stellar Cranes, Stellar Hooklift Hoists, Stellar Cable Hoists, Stellar Container Carriers, Stellar Service Trucks, and Stellar X-Tra-Lift Systems:

Twelve (12) month warranty on parts from the date recorded by Stellar as the in-service date, not to extend beyond twenty-four (24) months from date of manufacture.

Twelve (12) month repair labor from the date recorded by Stellar as the in-service date, not to extend beyond twenty-four (24) month from date of manufacture, and

Thirty-six (36) month warranty on all Stellar Manufactured structural parts from the date recorded by Stellar as the in-service date, not to extend beyond forty-eight (48) months from date of manufacture.

Stellar Tarper Systems:

Twelve (12) month warranty on parts from the date recorded by Stellar as the in-service date, not to extend beyond twenty-four (24) months from date of manufacture and

Three (3) month repair labor from the date recorded by Stellar as the in-service date, not to extend beyond fifteen (15) month from date of manufacture.

The in-service date will be derived from the completed warranty registration card. In the event a warranty registration card is not received by Stellar, the factory ship date will be used.

Stellar's obligation under this warranty is limited to, and the sole remedy for any such defect shall be, the repair and/or replacement (at Stellar's option) of the unaltered part and/or component in question. Stellar after-sales service personnel must be notified by telephone, fax, or letter of any warranty-applicable damage within fourteen (14) days of its occurrence. If at all possible, Stellar will ship the replacement part within 24-hours of notification by the most economical, yet expedient, means possible. Expedited freight delivery will be at the expense of the owner.

Warranty claims must be submitted and shall be processed in accordance with Stellar's established warranty claim procedure. Stellar after-sales service personnel must be contacted prior to any warranty claim. A return materials authorization (RMA) account number must be issued to the claiming party prior to the return of any warranty parts. Parts returned without prior authorization will not be recognized for warranty consideration. All damaged parts must be returned to Stellar freight prepaid; freight collect returns will be refused. Freight reimbursement of returned parts will be considered as part of the warranty claim.

Warranty service will be performed by any Stellar new equipment distributor, or by any Stellar-recognized service center authorized to service the type of product involved, or by the Stellar factory in the event of a direct sale. At the time of requesting warranty service, the owner must present evidence of date of delivery of the product. The owner shall be obligated to pay for any overtime labor requested of the servicing company by the owner, any field service call charges, and any towing and/or transportation charges associated with moving the equipment to the designated repair/service provider.

All obligations of Stellar and its authorized dealers and service providers shall be voided if someone other than an authorized Stellar dealer provides other than routine maintenance service without prior written approval from Stellar. In the case repair work is performed on a Stellar-manufactured product, original Stellar parts must be used to keep the warranty in force. The warranty may also be voided if the product is modified or altered in any way not approved, in writing, by Stellar.

The owner/operator is responsible for furnishing proof of the date of original purchase of the Stellar product in question. Warranty registration is the ultimate responsibility of the owner and may be accomplished by the completion and return of the Stellar product registration card provided with the product. If the owner is not sure of registration, he is encouraged to contact Stellar at the address below to confirm registration of the product in question. This warranty covers only defective material and workmanship. It does not cover depreciation or damage caused by normal wear and tear, accident, mishap, untrained operators, or improper or unintended use. The owner has the obligation of performing routine care and maintenance duties as stated in Stellar's written instructions, recommendations, and specifications. Any damage resulting from owner/operator failure to perform such duties shall void the coverage of this warranty. The owner will pay the cost of labor and supplies associated with routine maintenance.

The only remedies the owner has in connection with the breach or performance of any warranty on the Stellar product specified are those set above. In no event will Stellar, the Stellar distributor/dealer, or any company affiliated with Stellar be liable for business interruptions, costs of delay, or for any special, indirect, incidental, or consequential costs or damages. Such costs may include, but are not limited to, loss of time, loss of revenue, loss of use, wages, salaries, commissions, lodging, meals, towing, hydraulic fluid, or any other incidental cost.

All products purchased by Stellar from outside vendors shall be covered by the warranty offered by that respective manufacturer only. Stellar does not participate in, or obligate itself to, any such warranty.

Stellar reserves the right to make changes in design or improvement upon its products without imposing upon itself the same upon its products theretofore manufactured.

This warranty will apply to all Stellar Cranes, Stellar Hooklift Hoists, Stellar Cable Hoists, Stellar Container Carriers, Stellar Service Trucks, Stellar X-Tra-Lift Systems, and Stellar Tarper Systems shipped from Stellar's factory after January 1st, 2010. The warranty is for the use of the original owner only and is not transferable without prior written permission from Stellar.

THIS WARRANTY IS EXPRESSLY IN LIEU OF ANY OTHER WARRANTIES, EXPRESS OR IMPLIED, INCLUDING ANY WARRANTY OF MERCHANTABILITY OR FITNESS FOR A PARTICULAR PURPOSE. REMEDIES UNDER THIS WARRANTY ARE LIMITED TO THE PROVISION OF MATERIAL AND SERVICES, AS SPECIFIED HEREIN. STELLAR INDUSTRIES, INC. IS NOT RESPONSIBLE FOR INCIDENTAL OR CONSEQUENTIAL DAMAGES.

Revision Date: February 2010

Document Number: 37040