



# CRANE MODEL 9620

280 W. 3<sup>rd</sup> St., Box 169 • Garner, IA 50438 • Phone: 641-923-3741 • Fax: 641-923-2812

UPDATED 11/11/02

# **TABLE OF CONTENTS**

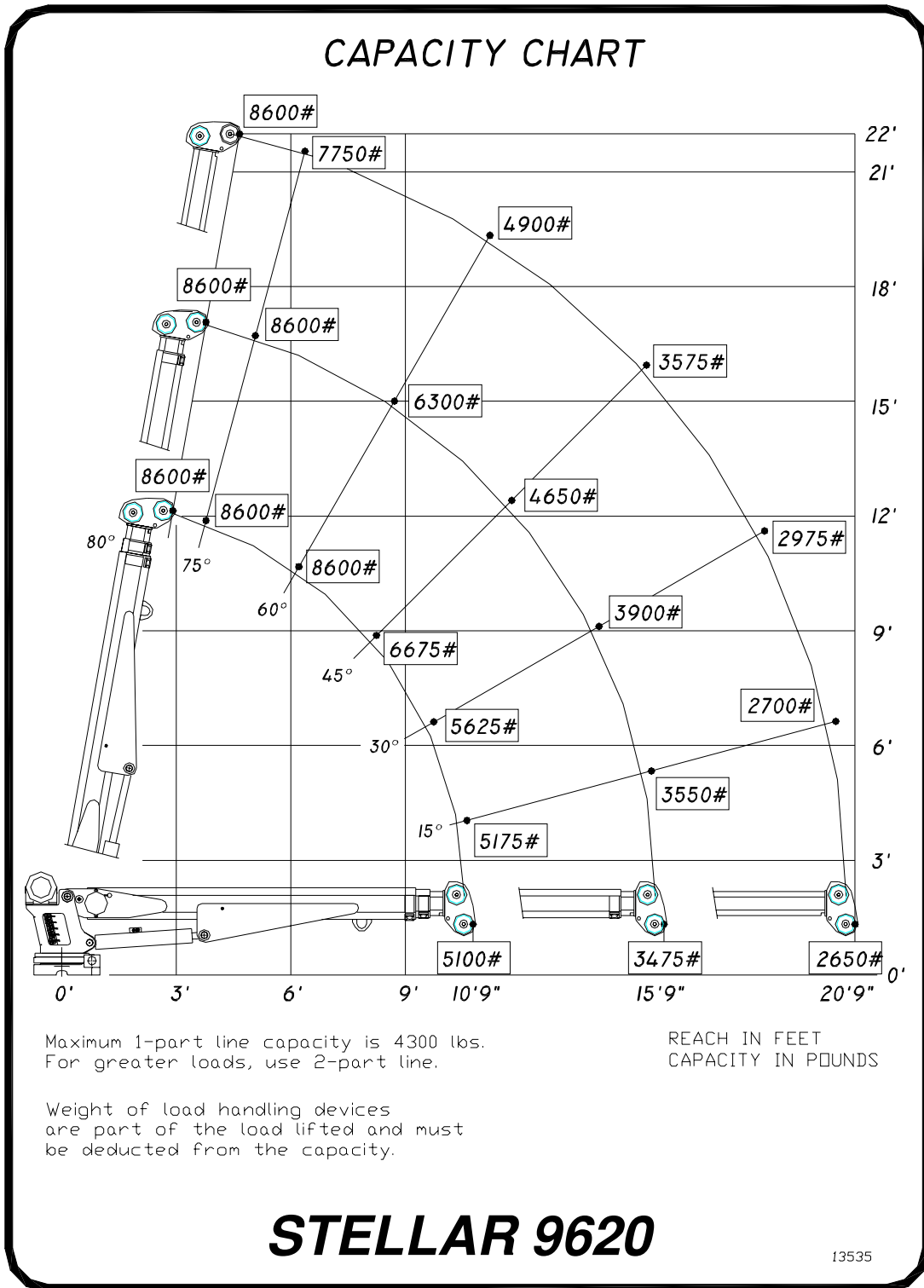
## **STELLAR CRANE 9620**

| <b>PAGE</b> | <b>DESCRIPTION</b>              |
|-------------|---------------------------------|
| 3.)         | SPECIFICATION SHEET             |
| 4.)         | CAPACITY CHART                  |
| 5.)         | CRANE OPERATION – 4 FUNCTION    |
| 6.)         | CRANE OPERATION – 7 FUNCTION    |
| 7.)         | MANUAL OPERATION                |
| 8.)         | BASE ASSEMBLY                   |
| 9.)         | MAST ASSEMBLY                   |
| 10.)        | MAIN BOOM ASSEMBLY              |
| 11.)        | CYLINDER ASSEMBLY               |
| 12.)        | EXTENSION BOOM ASSEMBLY         |
| 13.)        | CABLE AND HOOK ASSEMBLY         |
| 14.)        | WIRE ROPE/SHEAVE CONFIGURATIONS |
| 15.)        | CONTROL KIT – 4 FUNCTION        |
| 16.)        | CONTROL KIT – 7 FUNCTION        |
| 17.)        | HYDRAULIC KIT                   |
| 18.)        | INSTALLATION KIT                |
| 19.)        | DECAL KIT                       |
| 20.)        | STABILITY PROCEDURE             |
| 21.)        | STABILITY CHART                 |
| 22.)        | WARRANTY STATEMENT              |

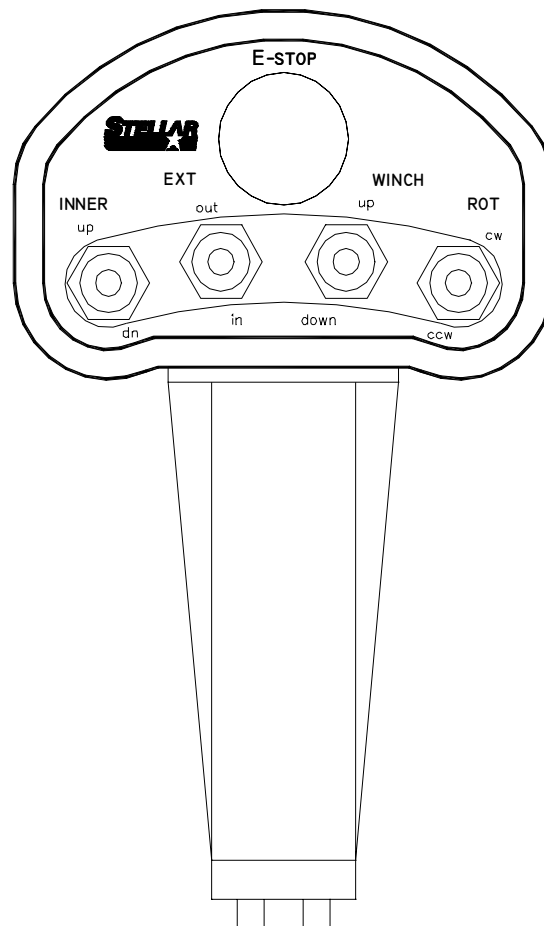
## Model 9620 Crane SPECIFICATION SHEET

|  |  |
|--|--|
| Crane Rating                               | 55,000 ft-lbs  |
| Standard Boom Length                       | 10' 9" from CL of Crane  |
| Boom Extension                             | 1 <sup>st</sup> stage: Hydraulic 60"<br>2 <sup>nd</sup> stage: Hydraulic 60" |
| Maximum Horizontal Reach                   | 20'9" from CL of Crane   |
| Maximum Vertical Lift<br>(from crane base) | 22'  |
| Boom Elevation                             | -5 to +80 degree   |
| Winch Specification                        |  |
| Rope Diameter                              | 3/8"   |
| Line pull speed                            | 60 ft/min  |
| Max. single part line                      | 4300 lbs   |
| Max. double part line                      | 8600 lbs   |
| Rotation                                   | 400 degree power<br>(worm gear)  |
| Lifting Capacities                         | 5100 lbs @ 10'9"<br>3475 lbs @ 15'9"<br>2650 lbs @ 20'9"                     |
| Power Supply Required                      | PTO & Pump<br>(7-10 gpm @ 3000 psi)  |
| Controls                                   | Radio control standard<br>for all functions.                                 |
| Stowed Height<br>(crane only)              | 34 inches  |
| Mounting Space Required                    | 20 x 21 inches   |
| Approximate Shipping Weight                | 2120 lbs   |

# CAPACITY CHART



## CRANE OPERATION – 4 FUNCTION



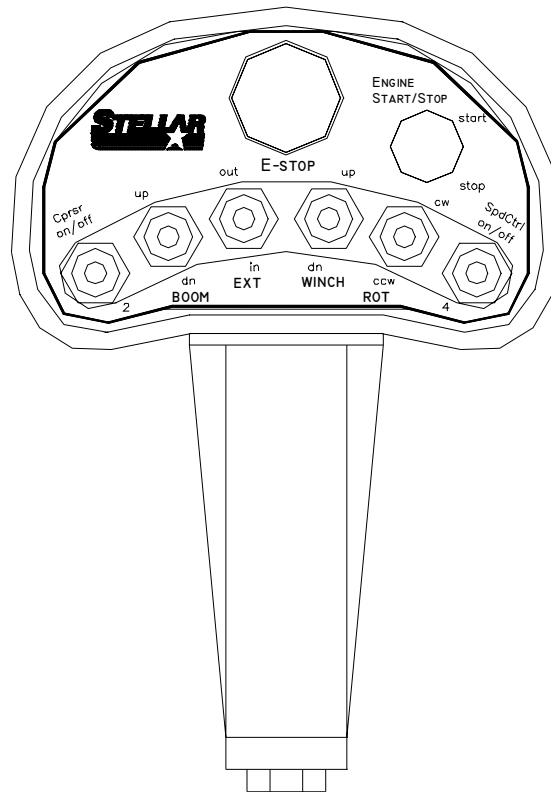
This crane is operated by a radio control system which operates an electronic valve bank. The controller (as shown) operates the following functions:

- main boom up and down
- extension boom in and out
- winch up and down
- rotation cw and ccw

To operate crane, activate the desired toggle switch. The crane will not function until the trigger on the remote handle is activated. The crane speed will change as the trigger is pulled or released.

NOTE: If the crane does not operate, check the batteries located in the remote handle and replace if necessary.

## CRANE OPERATION – 7 FUNCTION



This crane is operated by a radio control system which operates an electronic valve bank. The controller (as shown) operates the following functions:

- main boom up and down
- extension boom in and out
- winch up and down
- rotation cw and ccw

This controller can also be utilized to operate the following optional functions:

- engine start and stop
- speed control on and off
- compressor on and off

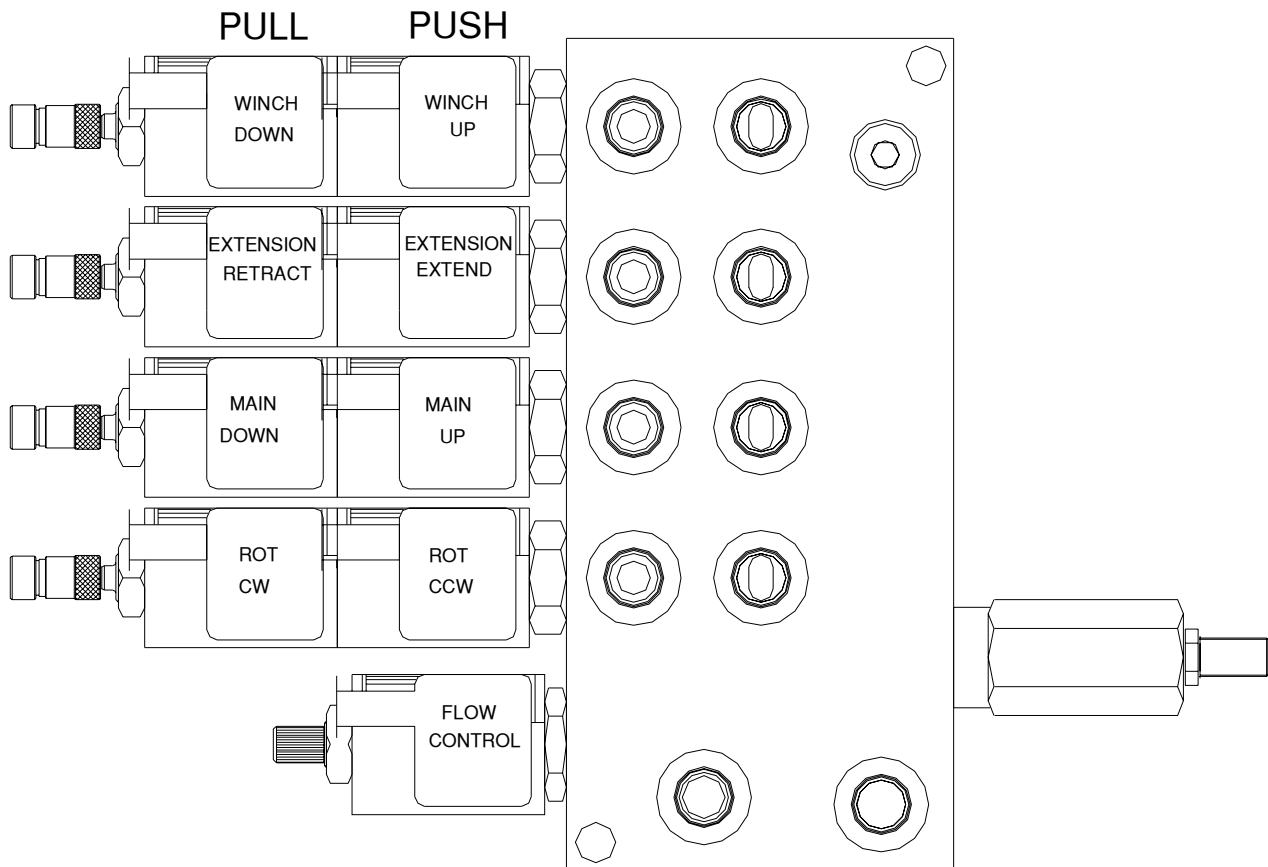
Two optional functions are also available for other customer needs. Option two and option four are both momentary 12 volt functions and will require a latching relay for most installations.

# MANUAL OPERATION

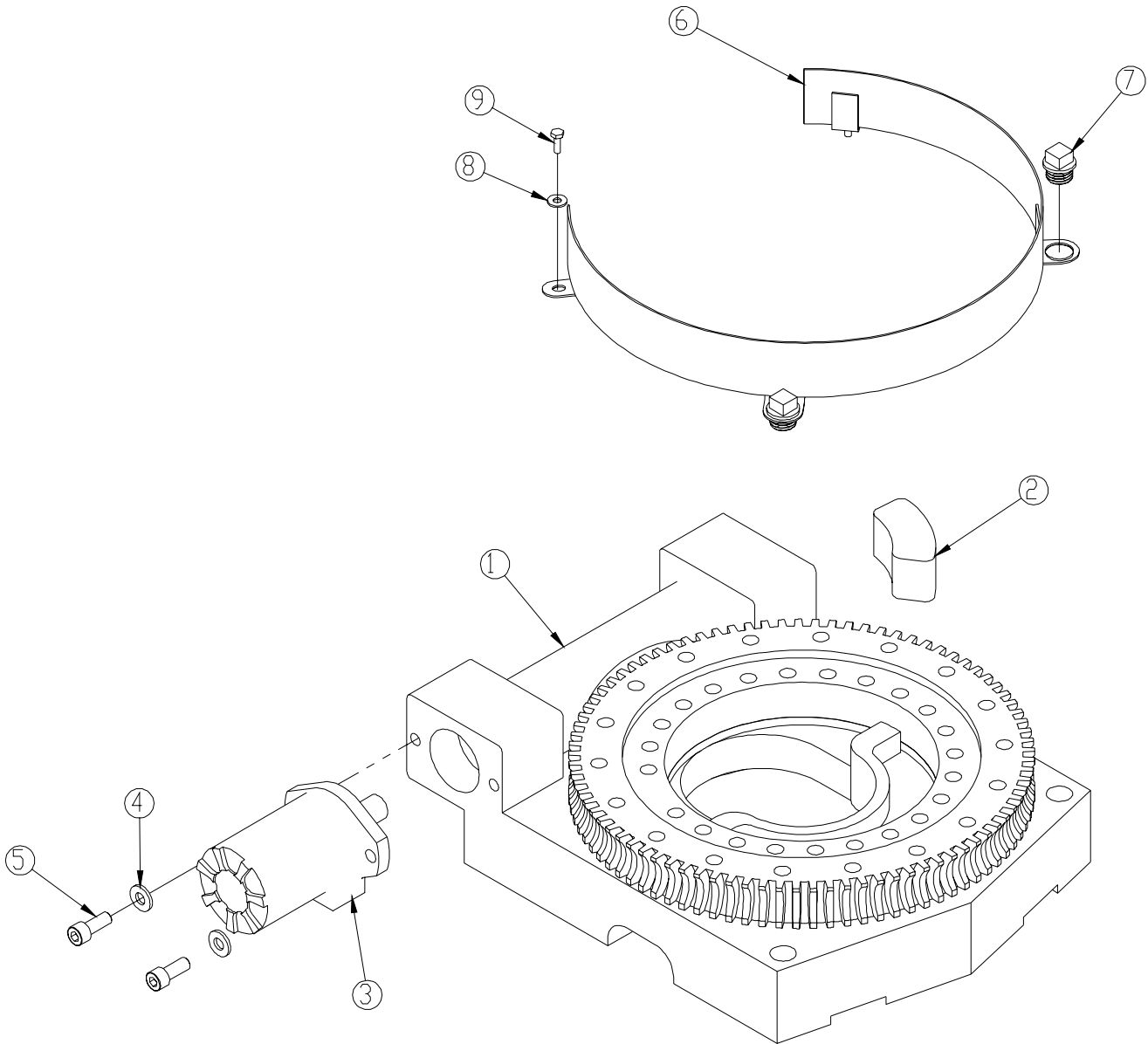
IN CASE OF RADIO FAILURE THE CRANE CAN BE OPERATED USING MANUAL OVERRIDES LOCATED ON THE VALVE BANK.

## VALVE MANUAL OVERRIDE OPERATION

1. **ACTIVATE FLOW CONTROL**  
TURN OVERRIDE SCREW ON FLOW CONTROL OUT.
2. **OPERATE SOLENOIDS**  
UNLATCH THEN PUSH OR PULL TO OPERATE.
3. **DEACTIVATE FLOW CONTROL**  
TURN OVERRIDE SCREW ON FLOW CONTROL IN.
4. **HAVE UNIT SERVICED**



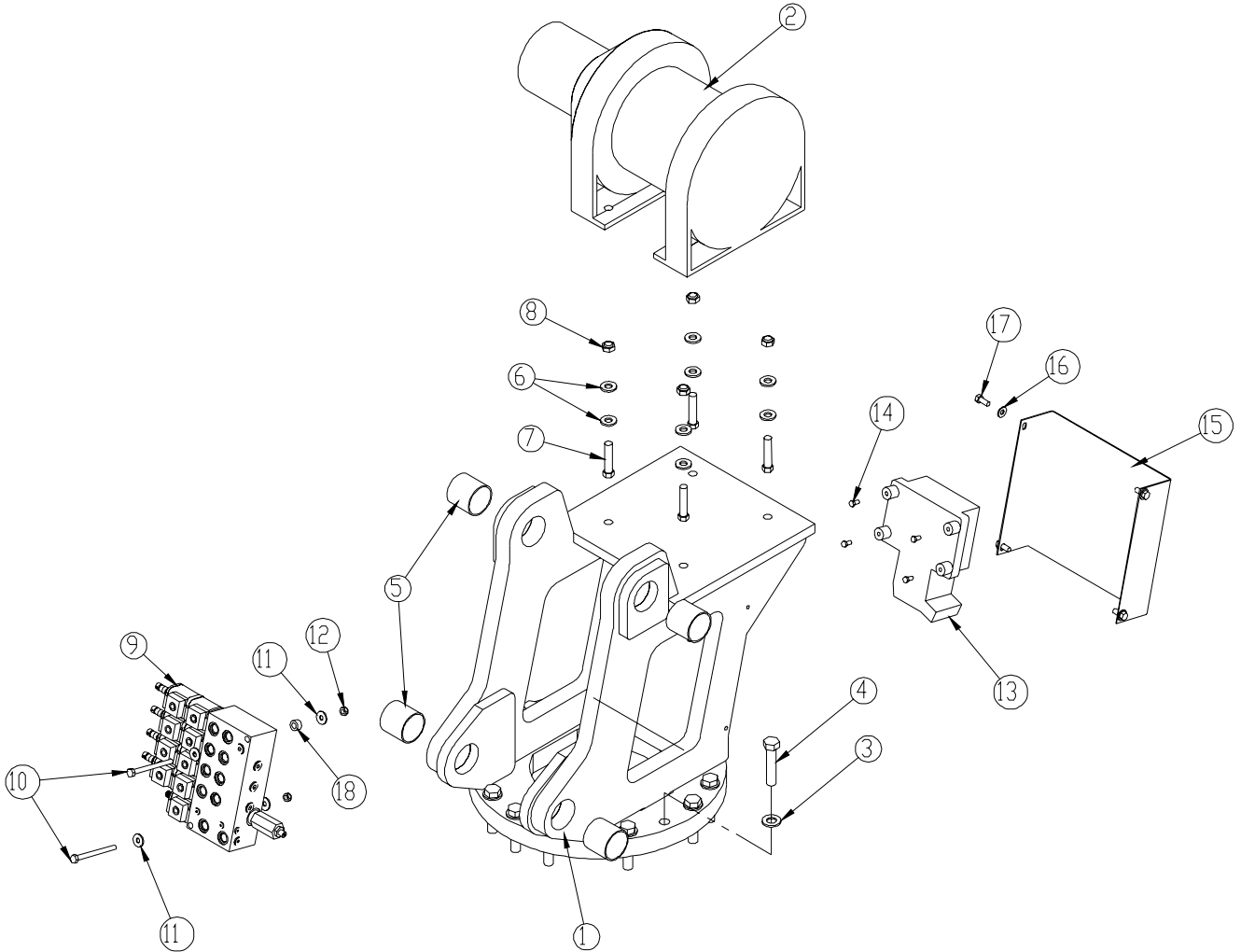
# BASE ASSEMBLY P/N 18027



| ITEM | PART  | DESCRIPTION                        | QTY. | ITEM | PART  | DESCRIPTION                  | QTY. |
|------|-------|------------------------------------|------|------|-------|------------------------------|------|
| 1    | 11453 | BEARING SWING DRIVE CAST BASE 6620 | 1    | 6    | 12730 | GUARD TTB 6620 CRANE         | 1    |
| 2    | 11542 | STOP 3820 400 SLIDE                | 1    | 7    | 13959 | CAP SCR 1.00-8 X .63 PLASTIC | 2    |
| 3    | C6069 | MOTOR HYD ROSS MK080613AAAB        | 1    | 8    | 0340  | WASHER 0.25 FLAT             | 2    |
| 4    | D0790 | WASHER 0.50 FLAT GR8               | 2    | 9    | 0479  | CAP SCR 0.25-20X0.75 HHGR5   | 2    |
| 5    | D1307 | CAP SCR 0.50-13X1.25 SH            | 2    |      |       |                              |      |

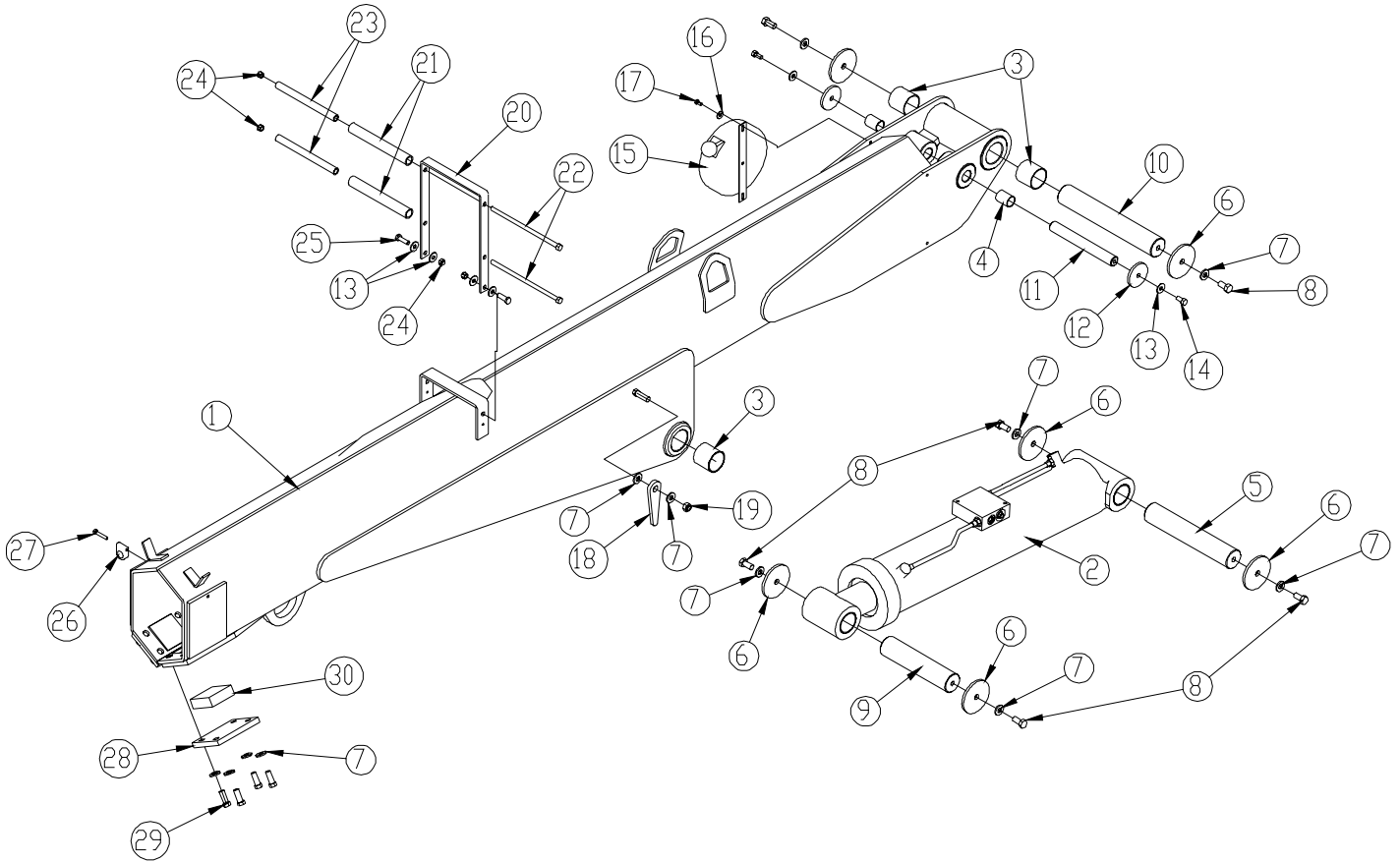


# MAST ASSEMBLY P/N 18028



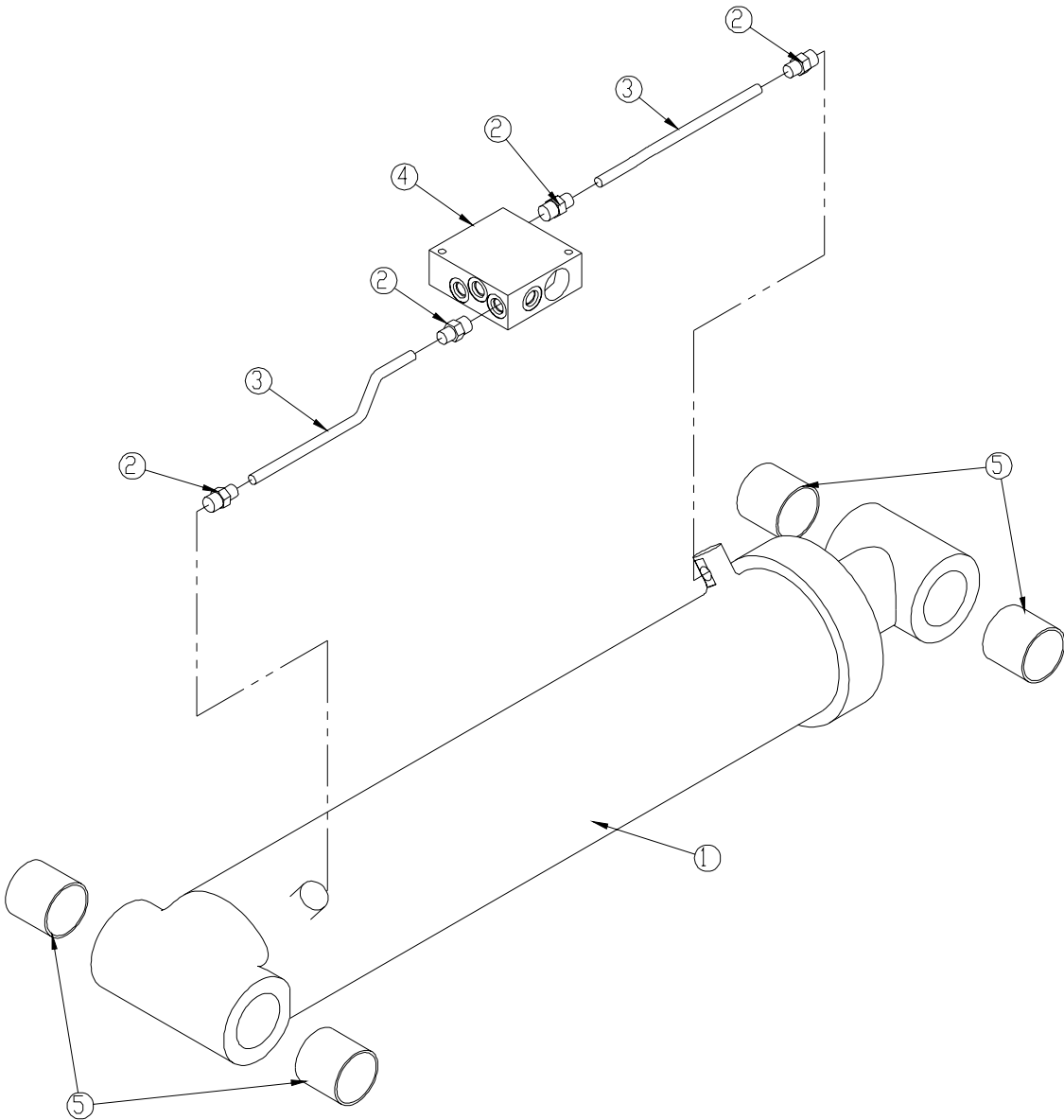
| ITEM | PART  | DESCRIPTION                         | QTY. | ITEM | PART  | DESCRIPTION                | QTY. |
|------|-------|-------------------------------------|------|------|-------|----------------------------|------|
| 1    | 12967 | MAST 9620 CRANE                     | 1    | 10   | 24139 | CAP SCR 0.31-18X3.75 HHGR5 | 2    |
| 2    | 12968 | WINCH 5000 P5-CC-05-1               | 1    | 11   | 0343  | WASHER 0.31 FLAT           | 4    |
| 3    | C5902 | WASHER 0.63 FLAT GR8                | 14   | 12   | 0342  | NUT 0.31-18 HH NYLOC       | 2    |
| 4    | D1034 | CAP SCR 0.63-11 X 3.00 HHGR8 ZY     | 14   | 13   | 11847 | RADIO RECEIVER             | 1    |
| 5    | 4381  | BUSHING 32DXR32 2.00X2.00 GARLOCK   | 4    | 14   | 10976 | CAP SCR 6MMX12MM HHGR8     | 4    |
| 6    | D0790 | WASHER 0.50 FLAT GR8                | 8    | 15   | 13391 | COVER 9620 MAST            | 1    |
| 7    | 10661 | CAP SCR 0.50-13X2.25 HHGR8 ZY       | 4    | 16   | 0340  | WASHER 0.25 FLAT           | 4    |
| 8    | C6106 | NUT 0.50-13 HHGR5 NYLOC             | 4    | 17   | 0420  | CAP SCR 0.31-18X0.75 HHGR5 | 4    |
| 9    | 24685 | VB 4 SECT ELECT W/PROP STERLING8GPM | 1    | 18   | 3336  | COLLAR 0.38X0.69X0.38      | 2    |

# MAIN BOOM ASSEMBLY P/N 18029



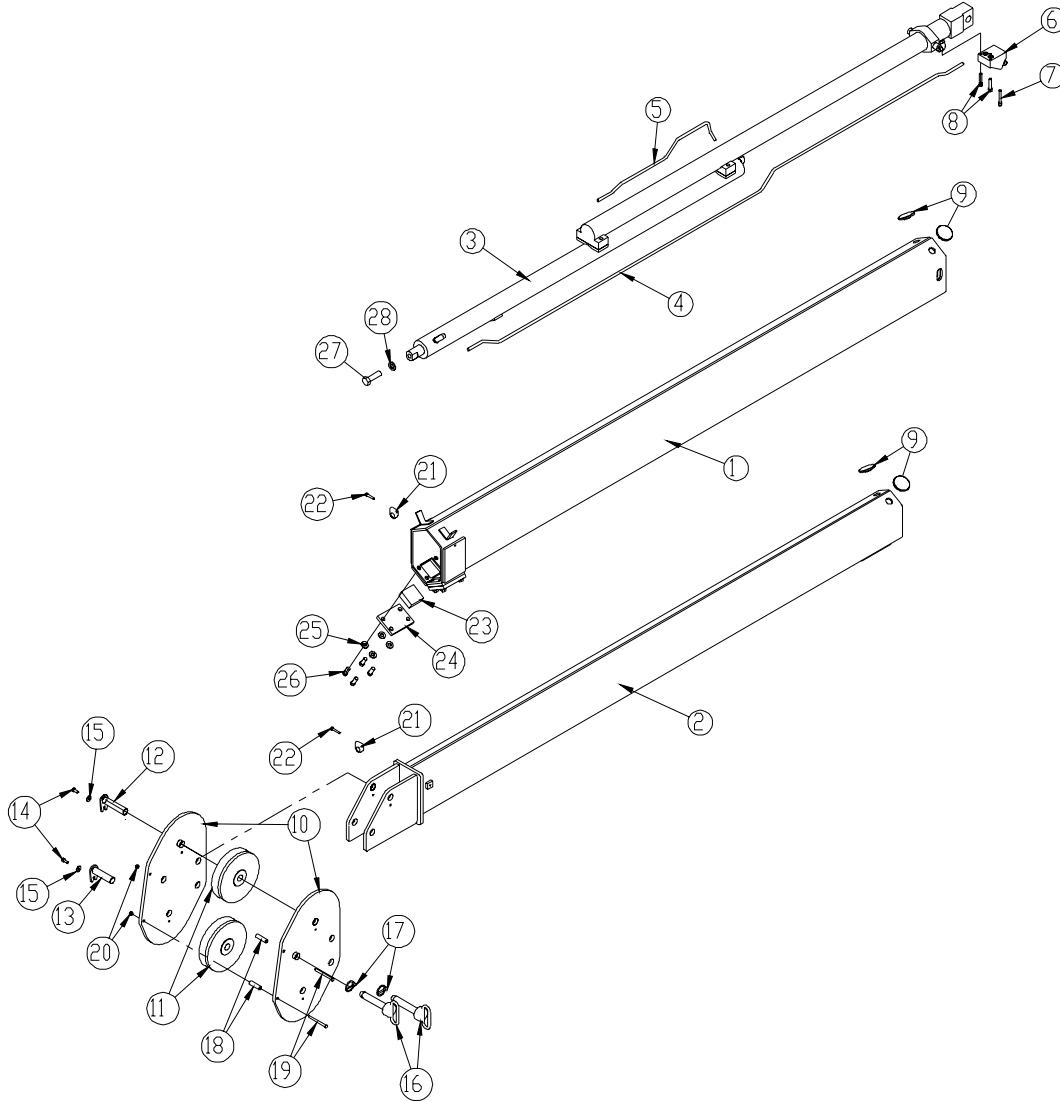
| ITEM | PART  | DESCRIPTION                       | QTY. | ITEM | PART  | DESCRIPTION                      | QTY. |
|------|-------|-----------------------------------|------|------|-------|----------------------------------|------|
| 1    | 12884 | BOOM INNER 9620                   | 1    | 16   | 0340  | WASHER 0.25 FLAT                 | 2    |
| 2    | 24144 | CYLINDER ASM 9620 INNER           | 1    | 17   | 0478  | CAP SCR 0.25-20X0.50 HHGR5       | 2    |
| 3    | 4381  | BUSHING 32DXR32 2.00X2.00 GARLOCK | 4    | 18   | D1194 | PLATE ANGLE INDICATOR            | 2    |
| 4    | 0068  | BUSHING QSI-1618-24               | 2    | 19   | C6106 | NUT 0.50-13 HHGR5 NYLOC          | 2    |
| 5    | 13363 | PIN 2.00X11.19 D&T                | 1    | 20   | 13435 | BRKT ROPE GUIDE 9620             | 1    |
| 6    | 8377  | PIN CAP 0.56X3.50X.25             | 6    | 21   | 13038 | PIPE 0.75X7.75 PVC               | 2    |
| 7    | D0790 | WASHER 0.50 FLAT GR8              | 18   | 22   | 12168 | CAP SCR 0.38-16X9.00 HHGR5       | 2    |
| 8    | 10172 | CAP SCR 0.50-13X1.00 HHGR8 ZY     | 6    | 23   | 11669 | SPACER ROPE GUIDE 6620           | 2    |
| 9    | 9711  | PIN 2.00X8.88 D&T                 | 1    | 24   | 0347  | NUT 0.38-16 HH NYLOC             | 4    |
| 10   | 13364 | PIN 2.00X12.69 D&T                | 1    | 25   | 0335  | CAP SCR 0.38-16X1.25 HHGR5       | 2    |
| 11   | 9712  | PIN 1.00X8.38 D&T                 | 1    | 26   | 0337  | HOSE CLAMP LN 4190 PP            | 1    |
| 12   | 7403  | PIN CAP 0.44X2.50X.252            | 2    | 27   | 0220  | CAP SCR 0.25-20 X 1.50 HHGR5     | 1    |
| 13   | C6353 | WASHER 0.38 FLAT GR8              | 6    | 28   | 13398 | PLATE WEAR PAD SUPPORT 9620      | 2    |
| 14   | 9843  | CAP SCR 0.38-16X0.75 HHGR8        | 2    | 29   | 10666 | CAP SCR 0.50-13X1.25 HHGR8       | 8    |
| 15   | 11544 | CORD REEL 6620                    | 1    | 30   | 13395 | WEAR PAD 3.00X3.00X1.00 NYLATRON | 2    |

# CYLINDER ASSEMBLY P/N 24144



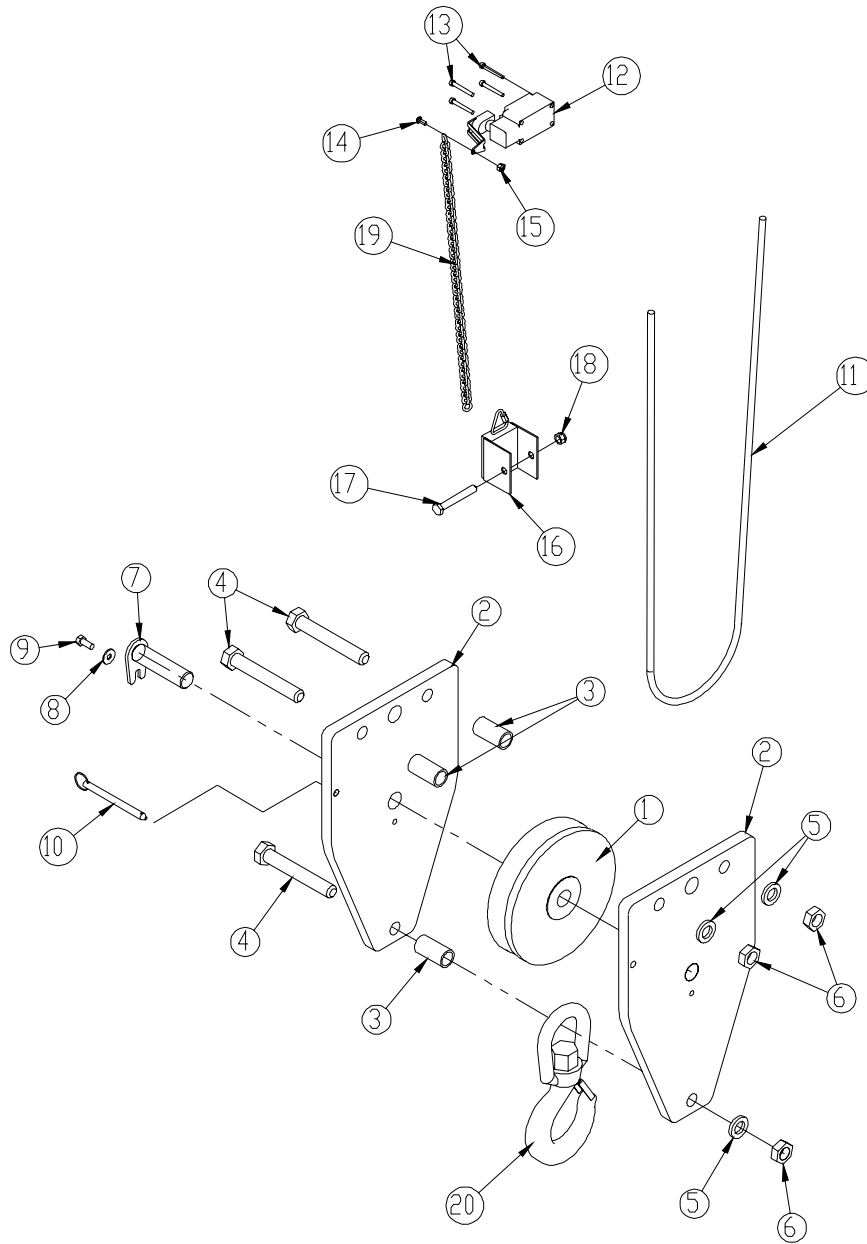
| ITEM | PART  | DESCRIPTION                       | QTY. |
|------|-------|-----------------------------------|------|
| 1    | 12970 | CYLINDER INNER 9620 5.00X21.38    | 1    |
| 2    | 0279  | FTG ADAPT 6-F5OLO-S               | 4    |
| 3    | 12158 | TUBE ASM 0.38X8.88 MAIN CYL 6620  | 2    |
| 4    | 13080 | MANIFOLD ASM 6620 INNER HOLDING   | 1    |
| 5    | 4381  | BUSHING 32DXR32 2.00X2.00 GARLOCK | 4    |

# EXTENSION BOOM ASSEMBLY P/N 18233



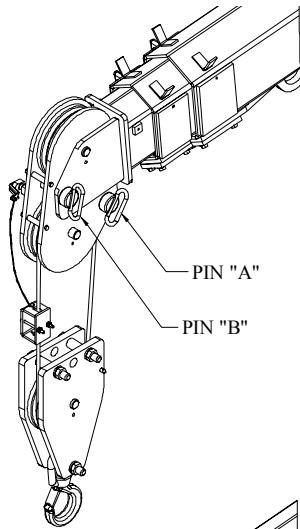
| ITEM | PART  | DESCRIPTION                        | QTY. | ITEM | PART  | DESCRIPTION                      | QTY. |
|------|-------|------------------------------------|------|------|-------|----------------------------------|------|
| 1    | 12885 | EXT BOOM 9620 1ST                  | 1    | 15   | 0343  | WASHER 0.31 FLAT                 | 2    |
| 2    | 15890 | EXT BOOM 10620 2ND                 | 1    | 16   | 12824 | PIN HITCH 1.00X4.50              | 2    |
| 3    | 13980 | CYLINDER EXT 9620 2 STAGE 2.5/2.5  | 1    | 17   | 5753  | PIN 0.19X1.56 LYNCH              | 2    |
| 4    | 14443 | TUBE ASM 0.38X102.25 EXT CYL 6620  | 1    | 18   | 11936 | SPACER BOOM TIP 3820             | 2    |
| 5    | 14442 | TUBE ASM 0.38X23.25 EXT CYL 6620   | 1    | 19   | 0490  | CAP SCR 0.31-18X3.50 HHGR5       | 2    |
| 6    | 14115 | MANIFOLD ASM 6620 EXT CBBB-LJN-XVN | 1    | 20   | 0342  | NUT 0.31-18 HH NYLOC             | 2    |
| 7    | 14601 | CAP SCR 0.38-16X2.25 SH ZC         | 1    | 21   | 0337  | HOSE CLAMP LN 4190 PP            | 2    |
| 8    | 11882 | CAP SCR 0.38-16X1.75 SH ZC         | 2    | 22   | 0220  | CAP SCR 0.25-20 X 1.50 HHGR5     | 2    |
| 9    | 9991  | WEAR PAD 0.25X2.00 RND NYLATRON    | 4    | 23   | 13396 | WEAR PAD 2.50X2.50X1.00 NYLATRON | 2    |
| 10   | 15998 | PLATE SHEAVE MOUNTING 10620        | 2    | 24   | 13397 | PLATE 1ST EXT 9620 WEAR PAD      | 2    |
| 11   | 13339 | SHEAVE 9620 8.00 DIA .38R/1.94 THK | 2    | 25   | D0790 | WASHER 0.50 FLAT GR8             | 8    |
| 12   | 13400 | PIN TEAR DROP 1.00X4.38            | 1    | 26   | 10666 | CAP SCR 0.50-13X1.25 HHGR8       | 8    |
| 13   | 13399 | PIN TEAR DROP 1.00X3.81            | 1    | 27   | 4974  | CAP SCR 0.75-10X2.50 HHGR8 ZY    | 1    |
| 14   | 0420  | CAP SCR 0.31-18X0.75 HHGR5         | 2    | 28   | C6219 | WASHER 0.75 SAE FLAT YELLOW GR8  | 1    |

# CABLE AND HOOK ASSEMBLY P/N 18234

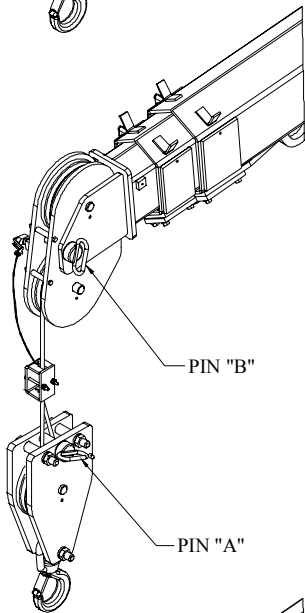


| ITEM | PART  | DESCRIPTION                        | QTY. | ITEM | PART  | DESCRIPTION                       | QTY. |
|------|-------|------------------------------------|------|------|-------|-----------------------------------|------|
| 1    | 13339 | SHEAVE 9620 8.00 DIA .38R/1.94 THK | 1    | 11   | 13403 | WIRE ROPE 3/8 6X25 IWRC-XIP 100FT | 1    |
| 2    | 16000 | PLATE 10620 SNATCH BLOCK           | 2    | 12   | 11938 | SWITCH LIMIT A2B FURNAS 3SE3170   | 1    |
| 3    | 13394 | SPACER 9620 SNATCH BLOCK           | 3    | 13   | 12177 | CAP SCR #10-24 X 1.50 SHGR5       | 4    |
| 4    | C1030 | CAP SCR 0.75-10X5.00 HHGR8         | 3    | 14   | D1711 | CAP SCR #10-24X0.50 BTNHD SS      | 1    |
| 5    | C6219 | WASHER 0.75 SAE FLAT YELLOW GR8    | 3    | 15   | C4956 | NUT #10-24 HH NYLOC SS            | 1    |
| 6    | 0538  | NUT 0.75 HHGR8 NYLOC               | 3    | 16   | 19994 | WEIGHT 3315 ATB                   | 1    |
| 7    | 13399 | PIN TEAR DROP 1.00X3.81            | 1    | 17   | 0530  | CAP SCR 0.38-16X2.75 HHGR5        | 1    |
| 8    | 0343  | WASHER 0.31 FLAT                   | 1    | 18   | 0347  | NUT 0.38-16 HH NYLOC              | 1    |
| 9    | 0420  | CAP SCR 0.31-18X0.75 HHGR5         | 1    | 19   | 18454 | Chain 0.105 X 19.00               | 1    |
| 10   | 13436 | PIN .38X4.00 QUICK RELEASE         | 1    | 20   | 3863  | HOOK 5 TON                        | 1    |

# WIRE ROPE / SHEAVE CONFIGURATIONS

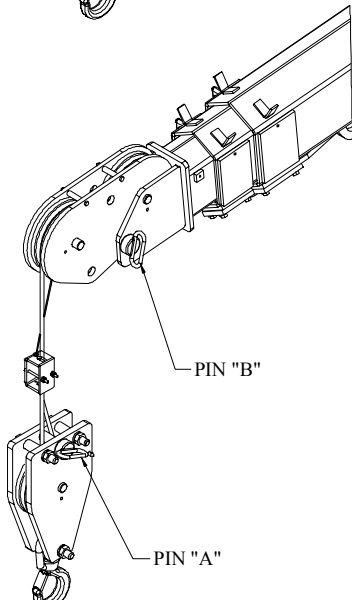


STANDARD 2 PART LINE  
SHEAVE FLIPPED DOWN  
CAPACITIES AS SHOWN ON  
LOAD CHART



SINGLE PART LINE  
SHEAVE FLIPPED DOWN  
(MAXIMUM CAPACITY 4300#)

- 1.) REMOVE PIN A FROM BOOM TIP
- 2.) ROUTE WIRE ROPE THROUGH SNATCH BLOCK
- 3.) PIN WIRE ROPE TO SNATCH BLOCK AS SHOWN WITH PIN "A"

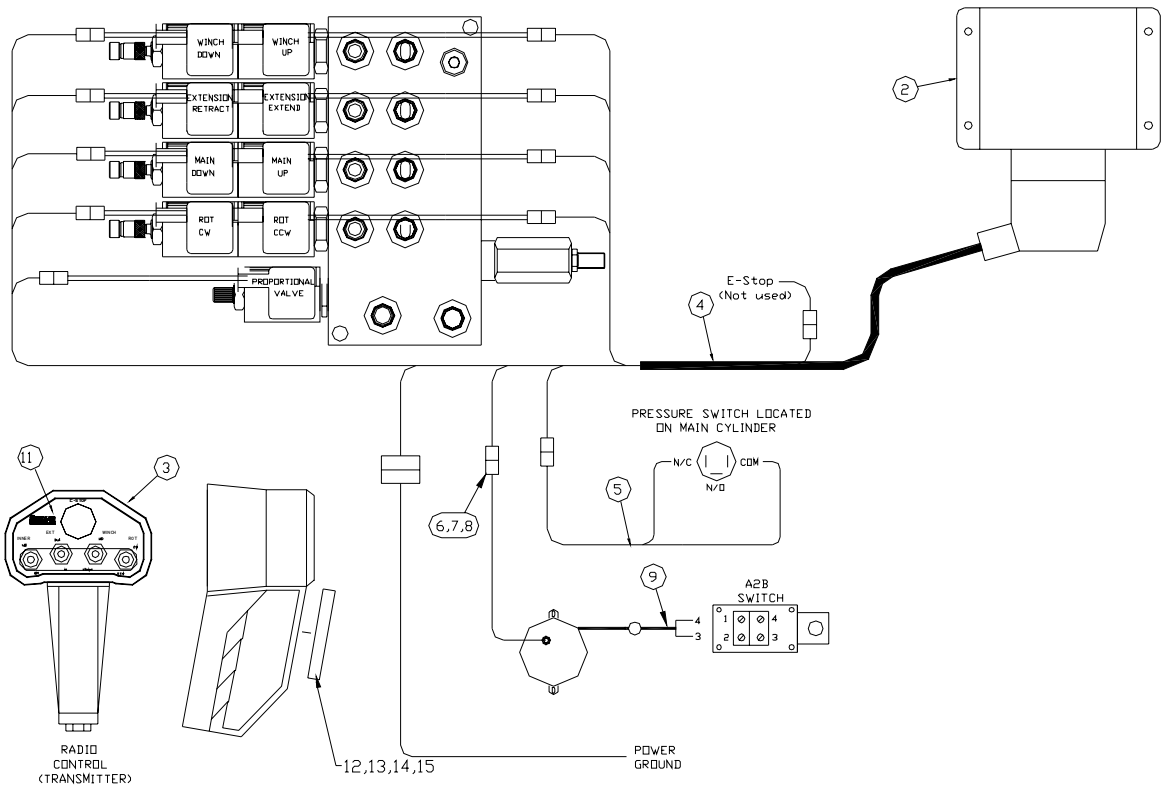


SINGLE PART LINE  
SHEAVE FLIPPED UP  
(MAXIMUM CAPACITY 4300#)

- 1.) REMOVE PIN B
- 2.) FLIP SHEAVE
- 3.) INSERT PIN B WITH SHEAVE IN UP POSITION

# CONTROL KIT – 4 FUNCTION

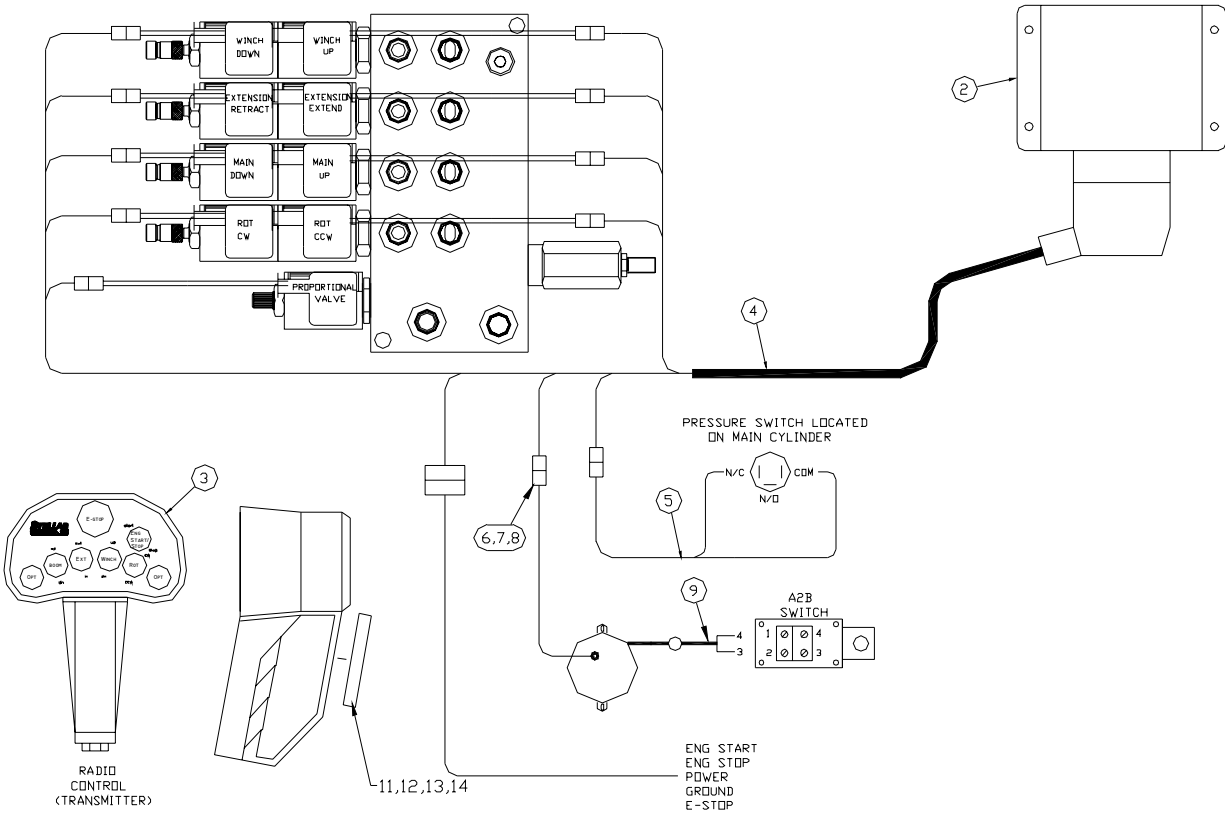
## P/N 18932



|      |          |                                   |     |
|------|----------|-----------------------------------|-----|
| 15   | 0333     | NUT 0.25-20 HHGR5 NYLOC           | 1   |
| 14   | 06021    | CAP SCR 0.25-20X0.75 BTNHD SS     | 1   |
| 13   | 6632     | DECAL MAGNET COVER-2.94DIA        | 1   |
| 12   | 6629     | MAGNET 70# 2.80 DIA               | 1   |
| 11   | 18460    | Decal - 4 function - Mech Cranes  | 1   |
| 10   | 10255    | BATTERY CHARGER W/BTRY 110-3.6V   | 1   |
| 09   | 10965    | CABLE GROMMET                     | 1   |
| 08   | 10976    | CONTACT M/TERM SHROUD             | 2   |
| 11   | 18460    | Decal - 4 function - Mech Cranes  | 1   |
| 10   | 10255    | BATTERY CHARGER W/BTRY 110-3.6V   | 1   |
| 09   | 10965    | CABLE GROMMET                     | 1   |
| 08   | 10976    | CONTACT M/TERM SHROUD             | 2   |
| 07   | 8384     | CABLE SEAL                        | 2   |
| 06   | 9752     | CONNECT 2 PIN SHROUD              | 1   |
| 05   | 13004    | WIRE HARNESS PRESSURE SWITCH 6620 | 1   |
| 04   | 17744    | WIRE HARNESS RADIO/VB             | 1   |
| 03   | 11833    | TRANSMITTER - RADIO (PART OF 1)   | RBP |
| 02   | 11847    | RECEIVER - RADIO (PART OF 1)      | RBP |
| 01   | 11832    | RADIO CONTROLLER ASSEMBLY         | 1   |
| ITEM | PART No. | DESCRIPTION                       | QTY |

# CONTROL KIT – 7 FUNCTION

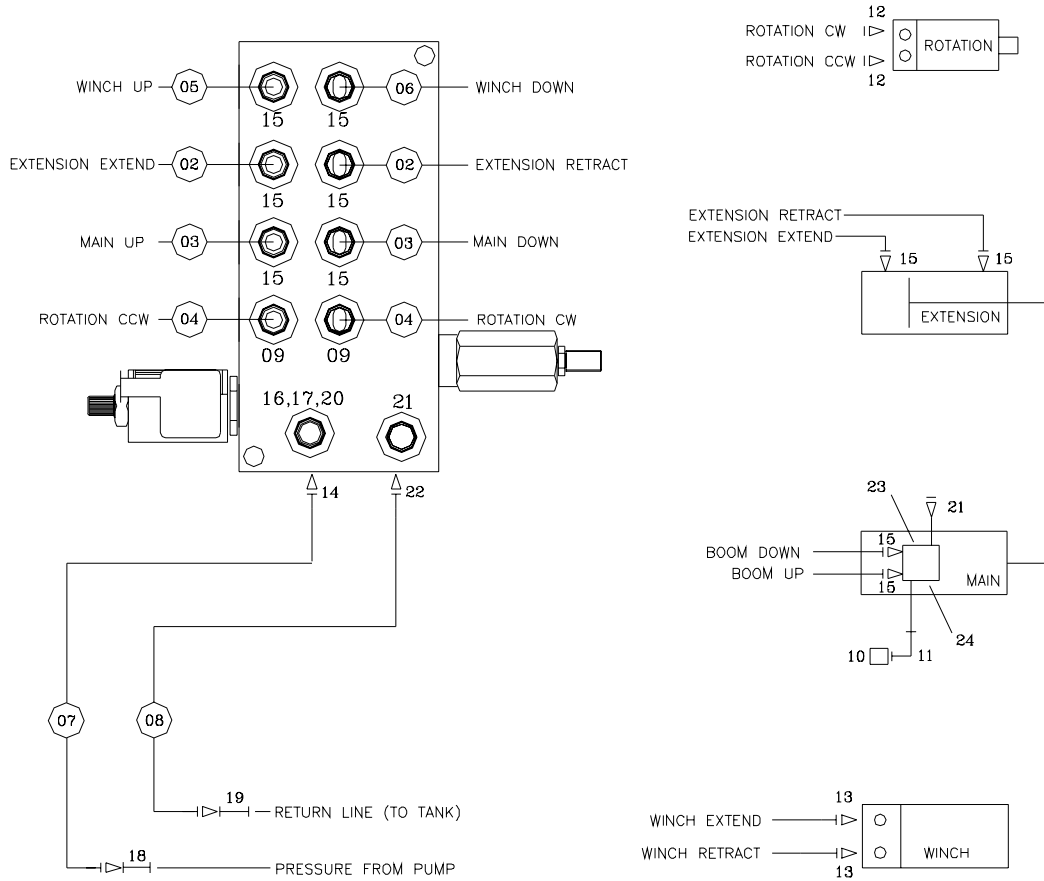
## P/N 10701



|      |          |                                   |     |
|------|----------|-----------------------------------|-----|
| 14   | 0333     | NUT 0.25-20 HHGR5 NYLOC           | 1   |
| 13   | C8021    | CAP SCR 0.25-20X0.75 BTNHD SS     | 1   |
| 12   | 8832     | DECAL MAGNET COVER-2.94DIA        | 1   |
| 11   | 8629     | MAGNET 70# 2.80 DIA               | 1   |
| 10   | 16255    | BATTERY CHARGER W/BTRY 110-3.6V   | 1   |
| 09   | 10965    | CABLE GROMMET                     | 1   |
| 08   | 10978    | CONTACT M/TERM SHROUD             | 2   |
| 07   | 8384     | CABLE SEAL                        | 2   |
| 06   | 9762     | CONNECT 2 PIN SHROUD              | 1   |
| 05   | 13004    | WIRE HARNESS PRESSURE SWITCH 6620 | 1   |
| 04   | 12134    | WIRE HARNESS RADIO/VB             | 1   |
| 03   | 11834    | TRANSMITTER - RADIO (PART OF 1)   | RBF |
| 02   | 11847    | RECEIVER - RADIO (PART OF 1)      | RBF |
| 01   | 11835    | RADIO CONTROLLER ASSEMBLY         | 1   |
| ITEM | PART No. | DESCRIPTION                       | QTY |

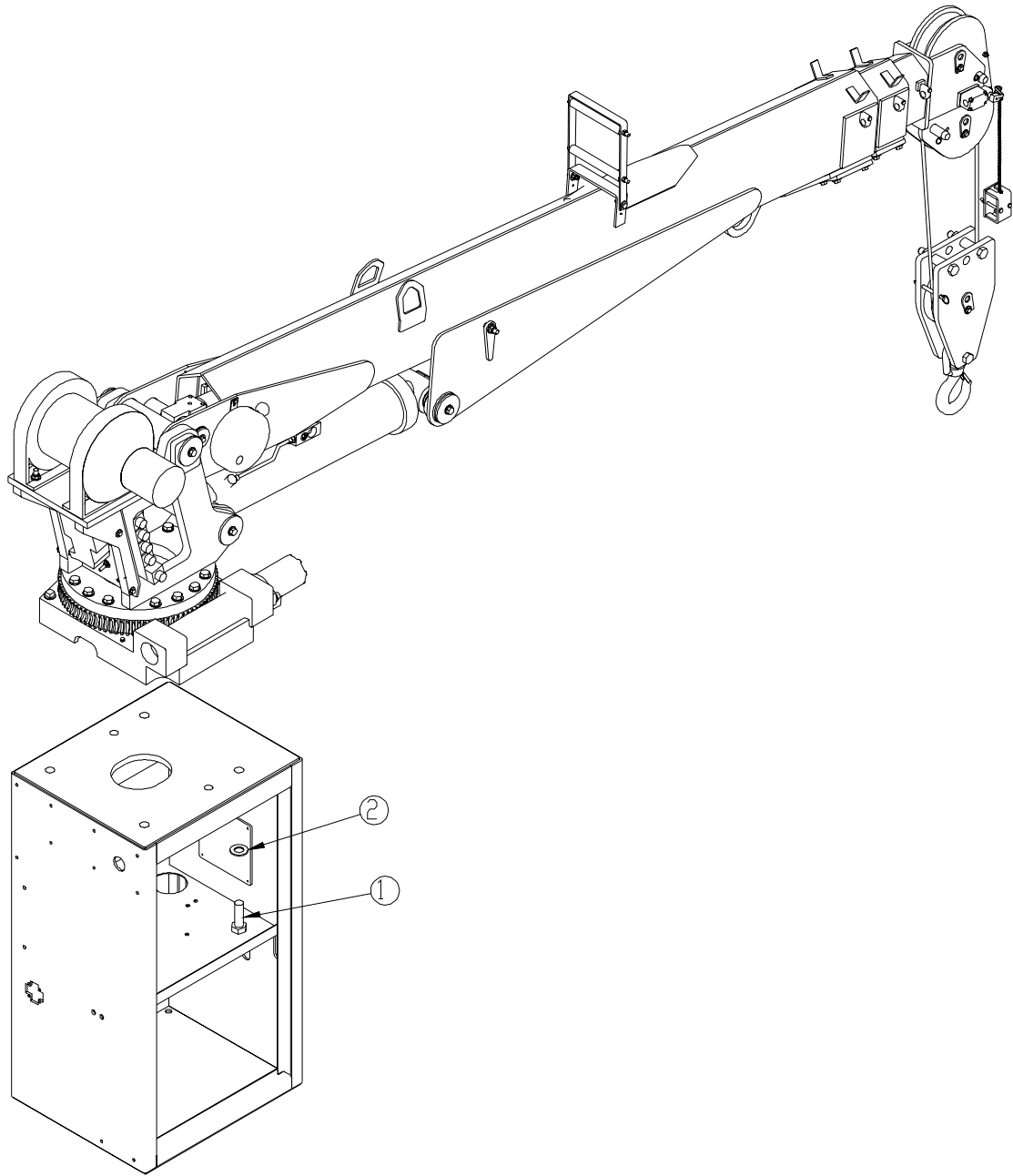


# HYDRAULIC KIT P/N 13971



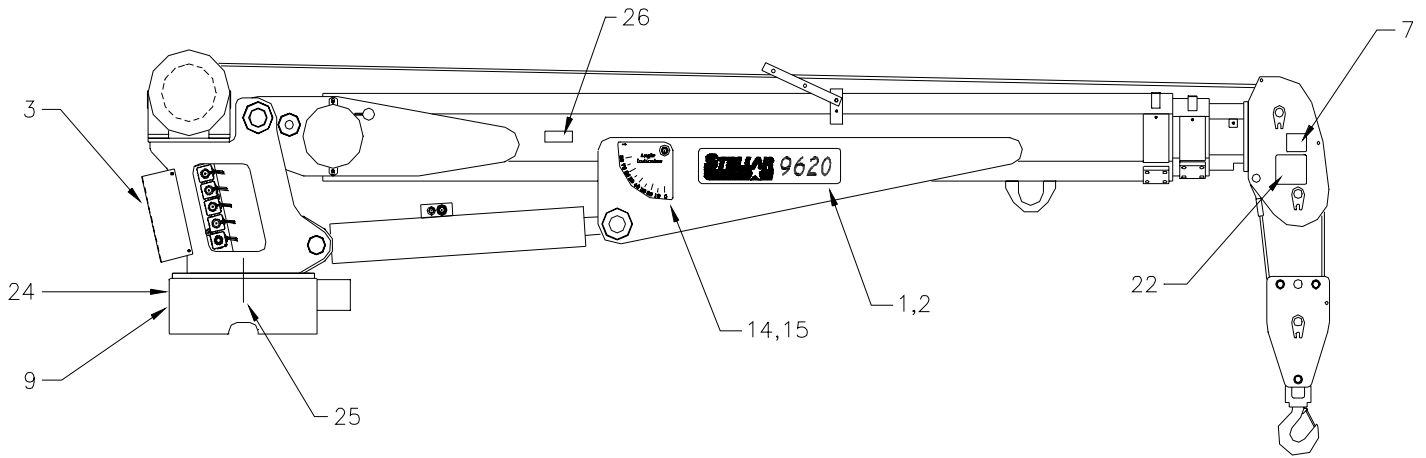
| ITEM | PART No. | DESCRIPTION                         | QTY  |
|------|----------|-------------------------------------|------|
| 24   | 11991    | VALVE C-BAL PLUG                    | REF  |
| 23   | 9803     | VALVE C-BAL                         | REF  |
| 22   | C1175    | FTG ELL 8-V5OLO-S                   | 1    |
| 21   | C4961    | PLUG STR HOLLOW HEX 0.38 6-HP50N    | 2    |
| 20   | D1430    | FTG ADAPT O-RING FMP 6-1/4 F50G-S   | 1    |
| 19   | 12172    | FTG SWIVEL 0.50 FS/FS PS81 JMJM-8-8 | 1    |
| 18   | 12171    | FTG SWIVEL 0.38 FS/FS PS81 JMJM-6-6 | 1    |
| 17   | 6397     | GAUGE OIL LF 2.5" 0-5000 CBM        | 1    |
| 16   | C5908    | FTG 0.25 ML ELL                     | 1    |
| 15   | 0279     | FTG ADAPT 6 F5OLO-S                 | 10   |
| 14   | D1193    | FTG ADAPT 6-V5OLO-S                 | 1    |
| 13   | 7343     | FTG O-RING FS 45 DEG 6-8 V5OLO      | 2    |
| 12   | D1302    | FTG ST TH ELB 90 DEG 6-10 C5OLO     | 2    |
| 11   | 3861     | FTG ML FM O-RING 90 DEG             | 1    |
| 10   | 4587     | SWITCH PRES OVERLD 744.6-S03R-3200N | 1    |
| 09   | C4922    | FTG ADAPT 4-6 F5OLO-S               | 2    |
| 08   | 25022    | HOSE-HYD .50 X 5                    | 1ref |
| 07   | 25021    | HOSE-HYD .38 X 6                    | 1ref |
| 06   | 13032    | HOSE-HYD .38 X 15                   | 1ref |
| 05   | 13031    | HOSE-HYD .38 X 14                   | 1ref |
| 04   | 13030    | HOSE-HYD .25 X 39                   | 2ref |
| 03   | 13029    | HOSE-HYD .38 X 22.50                | 2ref |
| 02   | 13028    | HOSE-HYD .38 X 17                   | 2ref |
| 01   | 13027    | HOSE KIT,9620 CRANE (incl:2-11)     | 1    |

# INSTALLATION KIT P/N 13539



| ITEM | PART | DESCRIPTION                     | QTY. |
|------|------|---------------------------------|------|
| 1    | 5199 | CAP SCR 1.00X8X3.00 HHGR8 ZY    | 6    |
| 2    | 6538 | WASHER 1.00 SAE FLAT YELLOW GR8 | 6    |

# DECAL KIT P/N 13538



|      |          |                                  |     |
|------|----------|----------------------------------|-----|
| 26   | 15172    | DECAL ASME/ANSI B30.22/B30.5     | 1   |
| 25   | 15171    | DECAL GREASE WORM DRIVE BEARINGS | 1   |
| 24   | 4188     | DECAL-ROTATION ALIGNMENT         | 1   |
| *23  | C4541    | DECAL-CRANE STOWING              | 1   |
| 22   | 12300    | DECAL-TWO BLOCKING               | 1   |
| *21  | 4214     | DECAL-SERVICE                    | 1   |
| *20  | C0568    | DECAL-DIESEL                     | 2   |
| *19  | 12452    | DECAL MANUAL EXT                 | 1   |
| *18  | C5911    | DECAL-STELLAR 2x4.5              | 3   |
| *17  | C5910    | DECAL-STELLAR 4x9.5              | 1   |
| *16  | 12451    | DECAL HOISTING PERSONNEL         | 1   |
| 15   | D1197    | DECAL-ANGLE INDICATOR LH         | 1   |
| 14   | D1196    | DECAL-ANGLE INDICATOR RH         | 1   |
| *13  | C1179    | DECAL-ELECTROCUTION 4.5x7.5      | 2   |
| *12  | C5918    | DECAL-DANGER MOVING O.R.         | 2   |
| *11  | C4795    | DECAL-DANGER O.R.                | 2   |
| *10  | 4190     | DECAL-DANGER                     | 1   |
| 09   | 9188     | DECAL-ROTATE/GREASE              | 1   |
| *08  | 4189     | DECAL-DANGER                     | 1   |
| 07   | 4186     | DECAL-ELECTROCUTION 2x2.75       | 1   |
| *06  | C4544    | DECAL-DANGER                     | 1   |
| *05  | C4540    | DECAL-DANGER                     | 1   |
| *04  | C4545    | DECAL-ELECTROCUTION 5x13         | 4   |
| *03  | 13535    | DECAL CAPACITY                   | 2   |
| 02   | 13537    | DECAL IDENTIFICATION CS          | 1   |
| 01   | 13538    | DECAL IDENTIFICATION SS          | 1   |
| ITEM | PART No. | DESCRIPTION                      | QTY |

\*USE THESE DECALS WITH BODY PACKAGE

# STABILITY

Definition of **STABILITY** for the Stellar Telescopic Crane Products:

A truck is stable until the load cannot be lifted off the ground with the winch, without tipping over the truck.

Every Stellar crane installed must be tested for stability to determine the actual load capacity of the final truck package. The actual test data must be recorded and supplied with the truck at the time of in-service and should be kept with the truck at all times. The following procedure will test the truck package for stability and will provide a stability capacity chart. The load limit information shown on the stability capacity chart is formulated on 85% of tipping.

## Set Up

- Locate the truck on a test course in position for loading and engage travel brakes.
- Set outriggers so that they make contact with firm, level footings.
- Operate the crane under partial load to assure operator proficiency and proper machine function.

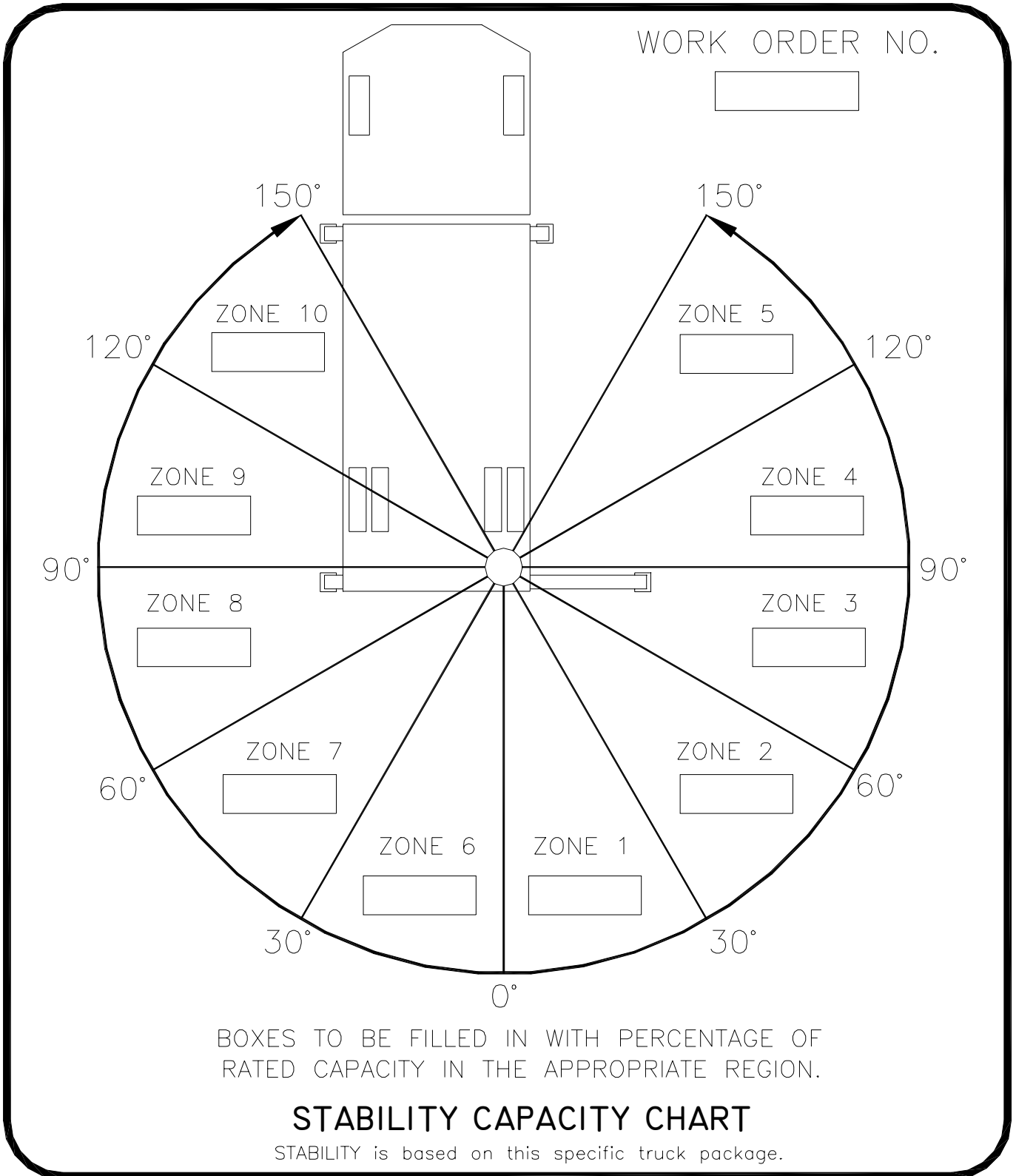
## Test Data for 9620 Crane

- Maximum Horizontal Reach – 249 inches (center of rotation to boom tip)
- Stability Test Weight – 3125#

## Test Procedure

- Rotate the crane into zone 1 position.
- With the crane fully retracted and the boom horizontal, winch the test weight off the ground. Note: keep the weight within six inches of the ground at all times.
- Extend the boom outward until full extension has been reached or until the truck becomes unstable (again, use the winch to keep the weight within six inches of the ground).
- If the boom goes full extension without becoming unstable, the crane is termed stable for this zone and 100% can be written in the zone 1 data box.
- If the truck becomes unstable prior to going full extension - retract the boom until the truck becomes stable and measure the horizontal reach in this position (center of rotation to boom tip). This is the stable horizontal reach for this zone. Use the following formula to determine the percentage of rated capacity.  
Stable horizontal reach divided by Maximum horizontal reach multiplied by 100 equals the percentage of rated capacity for this zone. Record this number in the data box for zone 1. This is the revised capacity due to stability for this zone.
- Repeat this procedure for each zone until the worksheet is completed.
- This is the revised CAPACITY based on STABILITY of this package.

# STABILITY CHART



## **Limited Warranty Statement**

### **for Stellar Tire Service Trucks, Truck-mounted Cranes, Truck-mounted Stellarc Welders & Truck-mounted Compressed Air Systems ONLY**

Stellar Industries, Inc. (Stellar) warrants products designed and manufactured by Stellar to be free from defects in material and workmanship under proper use and maintenance. Products must be installed and operated in accordance with Stellar's written instructions and stated lifting capacities. The warranty period shall be Twelve (12) month warranty on all Stellar designed and fabricated parts, and Ninety (90) days repair labor.

The warranty period shall begin from the date recorded by Stellar as the in-service date. This date will be derived from the completed warranty registration card. In the event a warranty registration card is not received by Stellar, the factory ship date will be used. Stellar's obligation under this warranty is limited to, and the sole remedy for any such defect shall be, the repair and/or replacement (at Stellar's option) of the part and/or component in question. Stellar after-sales service personnel must be notified by telephone, fax, e-mail, or mail of any warranty-applicable damage within fourteen (14) days of its occurrence. If at all possible, Stellar will ship the replacement part within 24-hours of notification by the most economical, yet expedient, means possible. Expedited freight delivery will be at the expense of the owner.

Warranty claims must be submitted and shall be processed in accordance with Stellar's established warranty claim procedure. Stellar Service personnel must be contacted prior to any warranty claim. A return materials authorization (RMA) account number must be issued to the claiming party prior to the return of any warranty parts. Parts returned without prior authorization will not be recognized for warranty consideration. All damaged parts must be returned to Stellar freight prepaid; freight collect returns will be refused.

Warranty service will be performed by any Stellar new equipment distributor, or by any Stellar-recognized service center authorized to service the type of product involved, or at the Stellar factory. At the time of requesting warranty service, the owner must present evidence of date of delivery of the product. The owner shall be obligated to pay for any overtime labor requested of the servicing company by the owner, any field service call charges, and any towing and/or transportation charges associated with moving the equipment to the designated repair/service provider.

All obligations of Stellar and its authorized dealers and service providers shall be voided if someone other than an authorized Stellar dealer provides other than routine maintenance service without prior written approval from Stellar. In the case repair work is performed on the Stellar-manufactured product, original Stellar parts must be used to keep the warranty in force. The warranty may also be voided if the product is modified or altered in any way not approved, in writing, by Stellar engineering.

The owner/operator is responsible for furnishing proof of the date of original purchase of the Stellar product in question.

Warranty registration is the ultimate responsibility of the owner and may be accomplished by the completion and return of the Stellar product registration card provided with the product. If the owner is unsure of registration, he is encouraged to contact Stellar at the address below to confirm registration of the product in question. This warranty covers only defective material and workmanship. It does not cover depreciation or damage caused by normal wear and tear, accident, mishap, untrained operators, or improper or unintended use. The owner has the obligation of performing routine care and maintenance duties as stated in Stellar's written instructions, recommendations, and specifications. Any damage resulting from owner/operator failure to perform such duties shall void the coverage of this warranty. The cost of labor and supplies associated with routine maintenance will be paid by the owner.

The only remedies the owner has in connection with the breach or performance of any warranty on the Stellar product specified are those set above. In no event will Stellar, the Stellar distributor/dealer, or any company affiliated with Stellar be liable for business interruptions, costs of delay, or for any special, indirect, incidental, or consequential costs or damages. Such costs may include, but are not limited to, loss of time, loss of revenue, loss of use, wages, salaries, commissions, lodging, meals, towing, hydraulic fluid, or any other incidental cost.

All products purchased by Stellar from outside vendors shall be covered by the warranty offered by that respective manufacturer only. Stellar does not participate in, or obligate itself to, any such warranty.

Hydraulic cylinders used in Stellar products are subject to the same warranty provisions stated above. Should a cylinder defect develop within the above stated warranty period, notify Stellar immediately. Stellar will ship, freight prepaid, by the most effective, expedient, means a new or re-manufactured cylinder of the same size and type. An authorization for return of the original part will be issued at the time the order is placed. The defective cylinder is to be returned to Stellar freight prepaid by the owner. Cylinders returned freight collect will be refused. Should the defective cylinder not be returned within 30 days of shipping the replacement cylinder, the owner is responsible to pay Stellar the full purchase price of the replacement part.

Stellar reserves the right to make changes in design or improvement upon its products without imposing upon itself the same upon its products theretofore manufactured.

This warranty will apply to all Stellar Tire Service Trucks, Truck-mounted Cranes, Truck-mounted Stellarc Welders & Truck-mounted Compressed Air Systems shipped from Stellar's factory after January 1, 1997. The warranty is for the use of the original owner only and is not transferable without prior written permission from Stellar.

THIS WARRANTY IS EXPRESSLY IN LIEU OF ANY OTHER WARRANTIES, EXPRESS OR IMPLIED, INCLUDING ANY WARRANTY OF MERCHANTABILITY OR FITNESS FOR A PARTICULAR PURPOSE. REMEDIES UNDER THIS WARRANTY ARE LIMITED TO THE PROVISION OF MATERIAL AND SERVICES, AS SPECIFIED HEREIN. STELLAR INDUSTRIES, INC. IS NOT RESPONSIBLE FOR INCIDENTAL OR CONSEQUENTIAL DAMAGES.

**Stellar Industries, Inc. • 280 West Third Street • Garner, Iowa 50438 • U.S.A.**

**E-Mail • sales@stellar-industries.com**

**Telephone: 800/321-3741; 641/923-3741 • Fax: 641/923-2812; 641/923-2811**

Revised 10/05/2000