

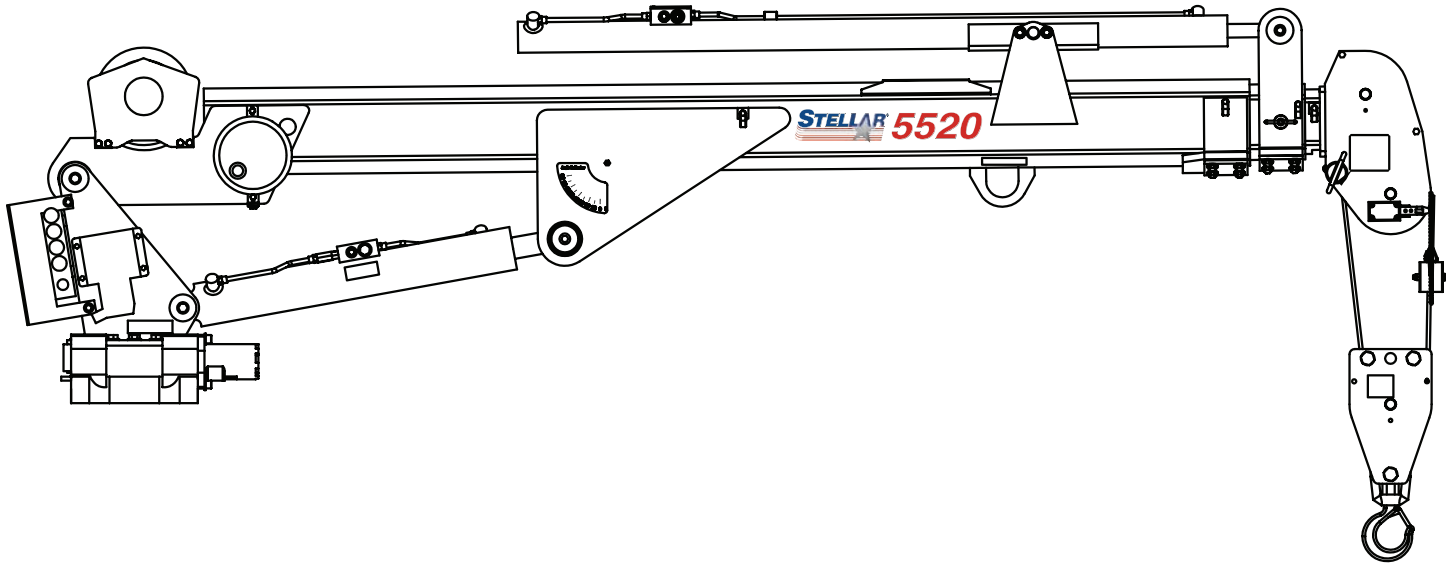


MODEL 5520

TELESCOPIC CRANE

OWNERS' MANUAL

Installation • Assembly Drawings • Parts



Stellar Industries, Inc.

190 State Street

PO Box 169

Garner, IA 50438

800-321-3741

Fax: 641-923-2811

www.stellarindustries.com

Subject to Change without Notification.
© 2010 Stellar Industries, Inc.

Last Revision: 06/06/10

5520 Manual Revisions

Date of Revision	Section Revised	Description of Revision

Table of Contents

Chapter 1 - Specifications	1
Capacity Chart - Decal PN 13758	2
Chapter 2 - Installation	3
Installation Overview	4
Control Kit (Electrical Version) - PN 18467	5
Control Kit (Hydraulic Version) - PN 14035	6
Control Kit (Cradle A2B) - PN 43693	7
Control Kit (12V Cradle A2B) - PN 52258	8
Hydraulic Kit (Electrical Version) - PN 23898	9
Hydraulic Kit (Hydraulic Version) - PN 23901	10
Valve Bank - PN 50592	11
Hydraulic Installation	12
Hydraulic System	13
Stability Procedure	14
Stability Capacity Chart	15
Decal Kit Placement - PN 23909	16
Chapter 3 - Assembly Drawings	17
Base Assembly - PN 21814	17
Mast Assembly - PN 21815	18
Power Unit Assembly (Electric Version Only) - PN 23913	19
Main Boom Assembly - PN 37551	20
Extension Boom Assembly - PN 21817	21
Extension Boom Assembly (Optional)- PN 28693	22
Main Cylinder Assembly - PN 26847	23
Extension Cylinder Assembly - PN 26848	24
Cable & Hook Assembly - PN 38202	25
Basket Cable & Hook Assembly (Optional)- PN 43537	26
Chapter 4 - Replacement Parts	27

Find a Dealer Near You:

<http://www.stellarindustries.com/pages/dist/distsearch.htm>

For Technical Questions, Information, Parts, or Warranty, Call Toll-Free at

800-321-3741

Hours: Monday - Friday, 8:00 a.m. - 5:00 p.m. CST

Or email at the following addresses:

Technical Questions, and Information
Order Parts
Warranty Information

service@stellarindustries.com
 parts@stellarindustries.com
 warranty@stellarindustries.com

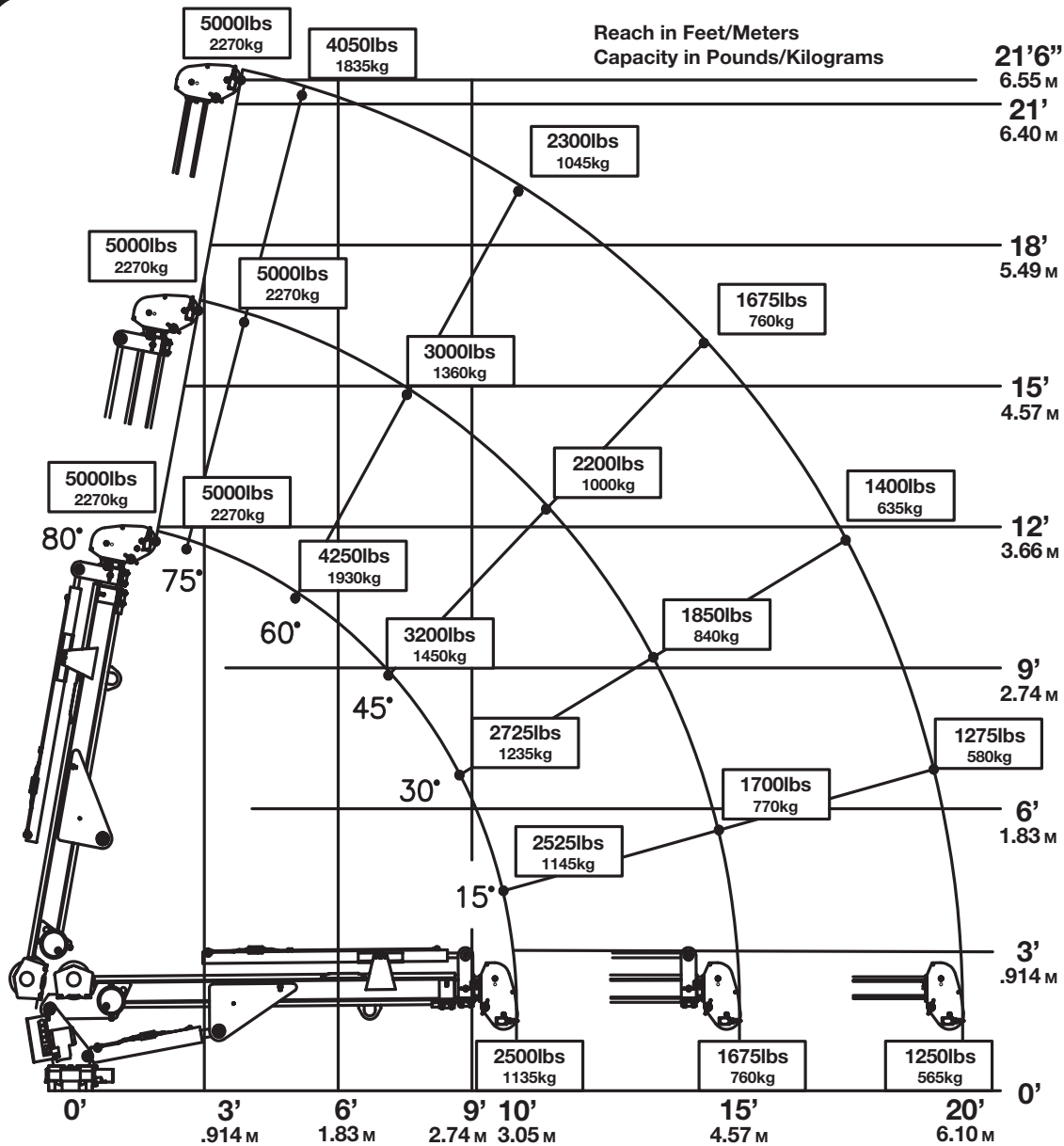
Chapter 1 - Specifications

Model 5520 Crane SPECIFICATION SHEET

Crane Rating:	25,000 ft-lb (3.46 TM)
Standard Boom Length:	10' (3.05 m) from CL of Crane
Boom Extension:	1st stage: Hydraulic 60" (152.4 cm) 2nd stage: Manual 60" (152.4 cm)
Maximum Horizontal Reach:	20' (6.10 m) from CL of Crane
Maximum Vertical Lift: (from crane base)	21' 6" (6.5 m)
Boom Elevation:	-5 to +80 degrees
Stowed Height: (crane only)	36.5" (80 cm)
Mounting Space Required:	18" x 20" (45.7 x 50.8 cm)
Approximate Crane Weight:	1,100 lbs (499 kg)
Controls:	Radio control standard for all functions
Winch Specifications	
Rope Diameter:	5/16" (.794 cm)
Line pull speed:	40 ft/min (6.1 m/min) 20 ft/min (electric version)
Max. single part line:	2500 lbs (1135 kg)
Max. double part line:	5000 lbs (2270 kg)
Rotation: (worm gear)	370 degree power
Lifting Capacities:	2500 lbs @ 10' (1135 kg @ 3.05 m) 1675 lbs @ 15' (760 kg @ 4.57 m) 1250 lbs @ 20' (565 kg @ 6.10 m)
Power Supply Required:	PTO & Pump 12 volt power unit (4.50 gpm @ 2850 psi) (4.5 gpm @ 2850 psi) (17.03 lpm @ 197 bar) (17.03 lpm @ 197 bar)

*Subject to change without notification

Capacity Chart - Decal PN 13758



Weight of load handling devices are part of the load lifted and must be deducted from the capacity.

Maximum 1 - part line capacity is 2500lbs (1135kg). For greater loads, use 2 - part line.



PN 13758

Chapter 2 - Installation

Notice: Read this Page Before Installation of the Crane

General Installation

This chapter is designed to serve as a general guide for the installation of a Stellar 5520 Telescopic Crane on a Stellar Service Body. Each installation is considered unique so certain portions of this chapter may or may not apply to your direct application. If a question should arise during the installation process, please contact Stellar Customer Service at (800) 321 3741.

This crane is designed for use with a Stellar Service Body installed on a vehicle that meets the minimum chassis requirements of the crane. It is the installer's responsibility to assure that the crane is mounted on a platform that will support the maximum crane rating of this crane.

Notice:

PTO and Pump installation instructions are provided by the corresponding manufacturers. For more information on which PTO and Pump fit your application, please contact your local Stellar Distributor or Stellar Customer Service.

Important: When installing welder units to the service bodies, it is highly recommended that a surge protector is installed on the chassis batteries to protect the crane radio receiver, wiring and other electronic devices from an unexpected electrical spike or surge. Failure to do so could result in extensive damage to the service body and crane electrical circuit.

Installation Notice

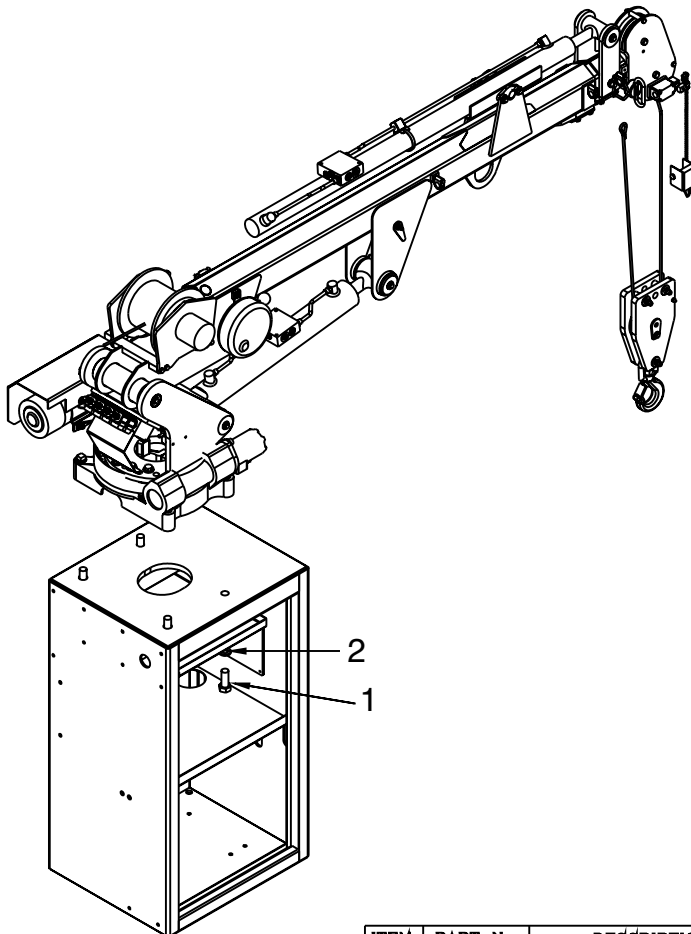
According to Federal Law (49 cfr part 571), each final-stage manufacturer shall complete the vehicle in such a manner that it conforms to the standards in effect on the date of manufacture of the incomplete vehicle, the date of final completion, or a date between those two dates. This requirement shall, however, be superseded by any conflicting provisions of a standard that applies by its terms to vehicles manufactured in two or more stages.

Therefore, the installer of Stellar cranes and bodies is considered one of the manufacturers of the vehicle. As such a manufacturer, the installer is responsible for compliance with all applicable federal and state regulations. They are required to certify that the vehicle is in compliance with the Federal Motor Vehicle Safety Standards and other regulations issued under the National Traffic and Motor Vehicle Safety Act.

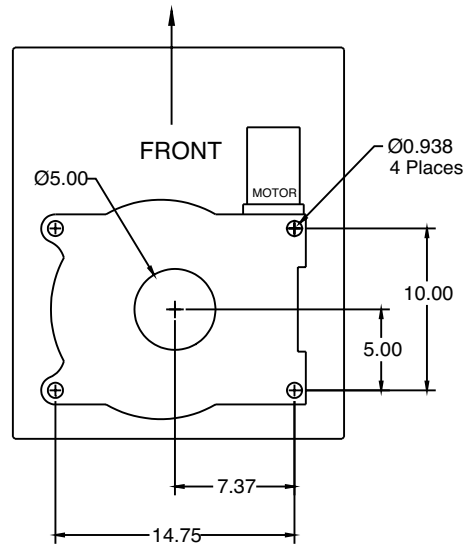
Please reference the Code of Federal Regulations, title 49 - Transportation, Volume 5 (400-999), for further information, or visit <http://www.gpoaccess.gov/nara/index.html> for the full text of Code of Federal Regulations.

Installation Overview

1. Determine that the mounting location for the 5520 crane is at least 18" x 20" (45.7 x 50.8 cm).
2. Use the detail below to drill .938" diameter holes into the mounting plate. Run tap on the threads of the base to be sure they are clean.
3. Use a crane or lifting device capable of lifting the weight of the Stellar crane. The Stellar 5520 weighs approximately 1100 lbs (499 kg). **Note: cranes are shipped with rotation positioned at 180 degrees from normal stowed travel position (See photo above).** This will allow for easy installation of the crane and permanent connection of all hydraulic and electrical components prior to repositioning into the crane saddle.
4. Connect straps or chain from the lifting device to the lifting rings on the Stellar 5520.
5. Use four (4) 7/8 x 2 1/4 #8 bolts and four (4) #8 flat washers.
6. Install a washer on each bolt.
7. Apply Loctite Thread locker #277 to the bolts.
8. Using the lifting device, lower the Stellar 5520 just above the crane compartment and start the bolts. Have someone assist in leveling the crane. **Note: the rotation motor should be to the door side of crane compartment and the boom should be extended back over the rear bumper.**
9. Secure the crane using the mounting hardware provided. **Note: longer or shorter cap screws may be required – recommended thread engagement into crane base is 1.00" – use grade 8, zinc plated cap screws only.**
10. Torque the cap screws to 454 ft-lbs.
11. Remove supporting crane.
12. Hook-up hydraulics and electrical using the schematics provided in *Chapter 8 - Hydraulics - Electrical*.
Note: If questions should arise during any portion of this installation, please contact Stellar Customer Service at (800) 321-3741.



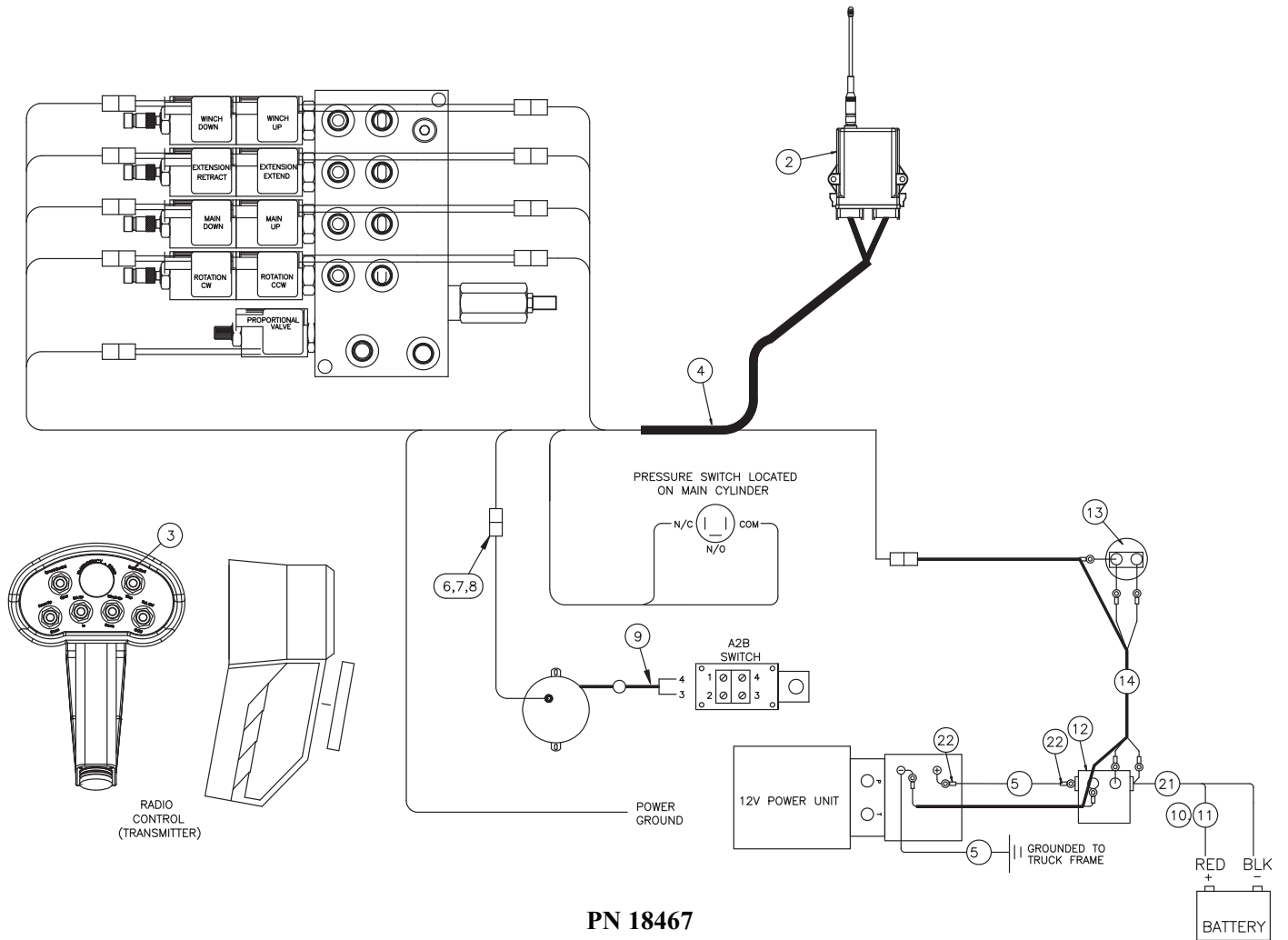
WARNING!
 The use of this crane on a body not capable of handling the loads imposed on it may result in serious injury or death.



Hole Mounting Detail

ITEM	PART No.	DESCRIPTION	QTY
01	17688	CAP SCR 0.88-9x2.25 HHGR8	4
02	8648	WASHER 0.88 SAE GR8	4

Control Kit (Electrical Version) - PN 18467

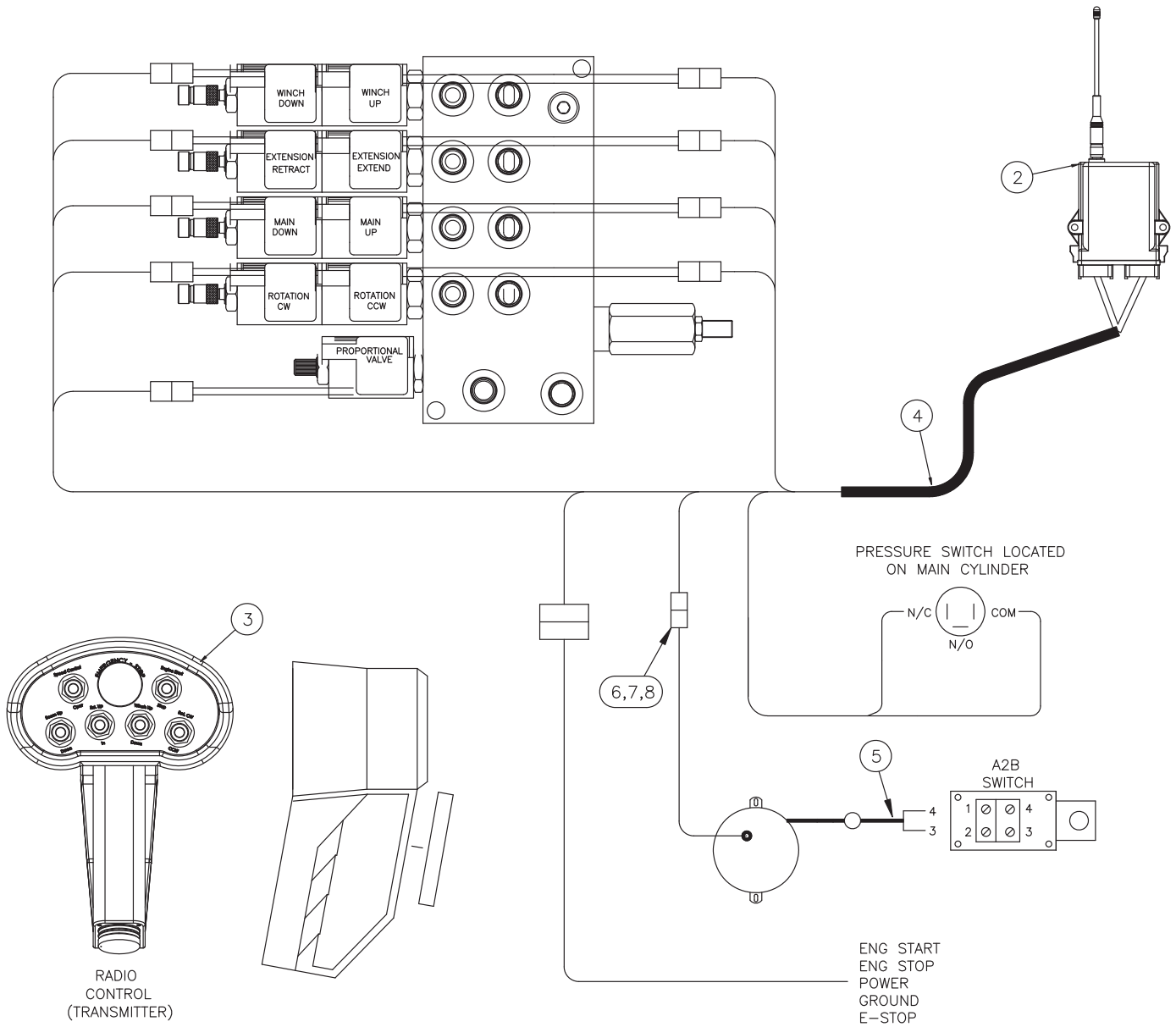


PN 18467

ITEM	PART No.	DESCRIPTION	QTY
01	36976	RADIO CONTROLLER ASM 6 FCTN	1
02	34103	RECEIVER - RADIO (PART OF 1)	1ref
03	34102	TRANSMITTER RADIO 6 FCTN (PART OF 1)	1ref
04	34443	WIRE HARNESS 6 FCTN 5520 12V H2	1
05	17279	CABLE #2 WELDING	20"
06	9752	CONNECT 2 PIN SHROUD PACKARD	1
07	8384	CABLE SEAL 18-20 PACKARD	2
08	9756	CONTACT M TERM SHROUD 18-20	2
09	10965	CABLE GROMMET	1
10	36435	FUSE 200 AMP 46274	1
11	32523	FUSE HOLDER 46039	1
12	18468	SOLENOID 12V 200 AMP CONT	REF
13	17771	SWITCH PUSH BUTTON	1
14	34658	WIRE HARNESS 5520 SOLENOID	1
15	13561	HEAT SHRINK 0.19 BLACK 4.00L	2
16	15218	HEAT SHRINK 0.50 BLK	2'
17	20466	CABLE #2 2 WIRE (RM)	34'
18	4070	TERML #2X.38 COPPER LUG	8

NOTE: SHIP LOOSE ITEMS 15,16,17,18(6)

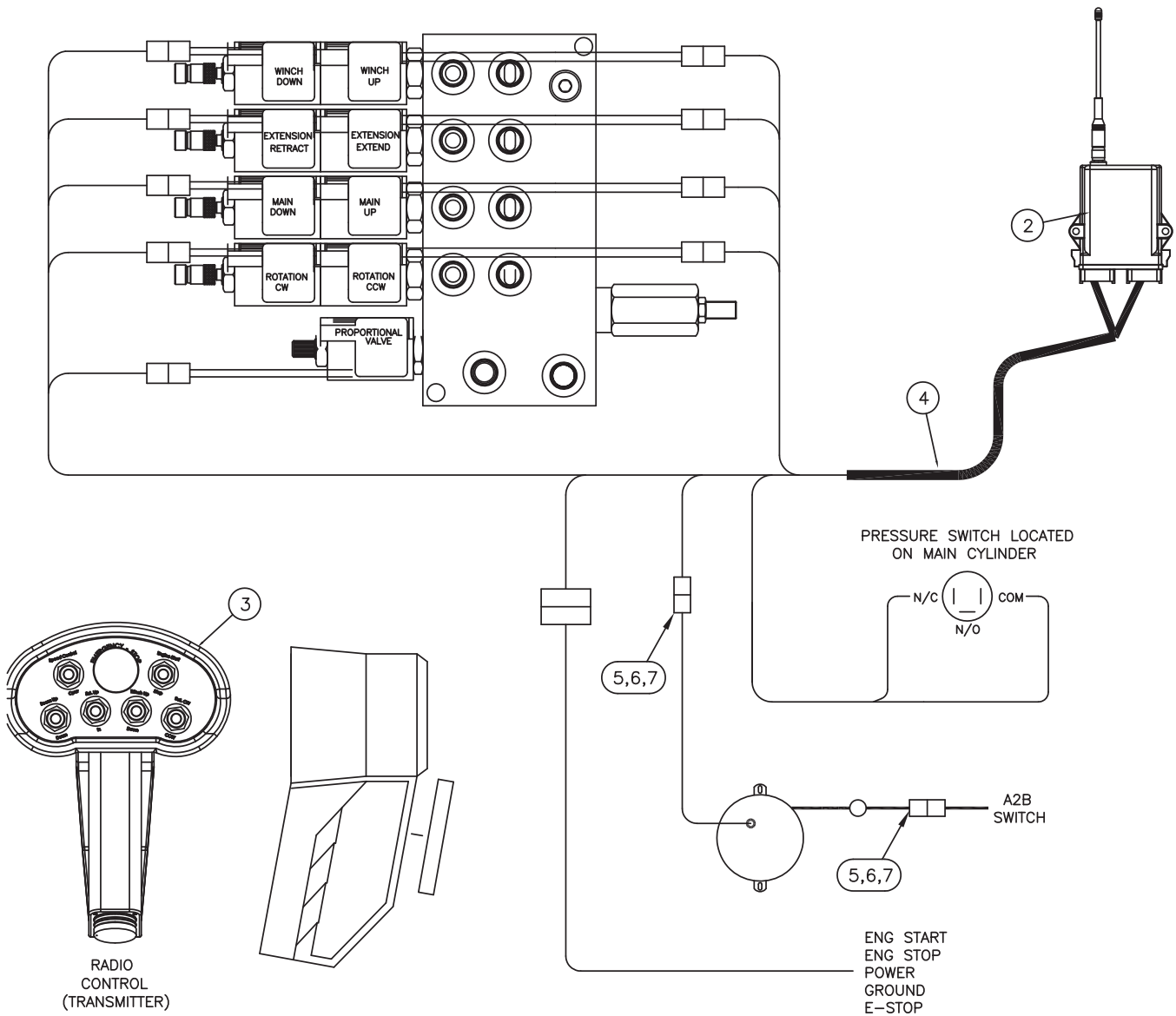
Control Kit (Hydraulic Version) - PN 14035



PN 14035

08	9756	CONTACT M TERM SHROUD 18-20	2
07	8384	CABLE SEAL 18-20 PACKARD	2
06	9752	CONNECT 2 PIN SHROUD	1
05	10965	CABLE GROMMET	1
04	44067	WIRE HARNESS RADIO/VB	1
03	34102	TRANSMITTER - RADIO (PART OF 1)	REF
02	34103	RECEIVER - RADIO (PART OF 1)	REF
01	34101	RADIO CONTROLLER ASSEMBLY	1
ITEM	PART No.	DESCRIPTION	QTY

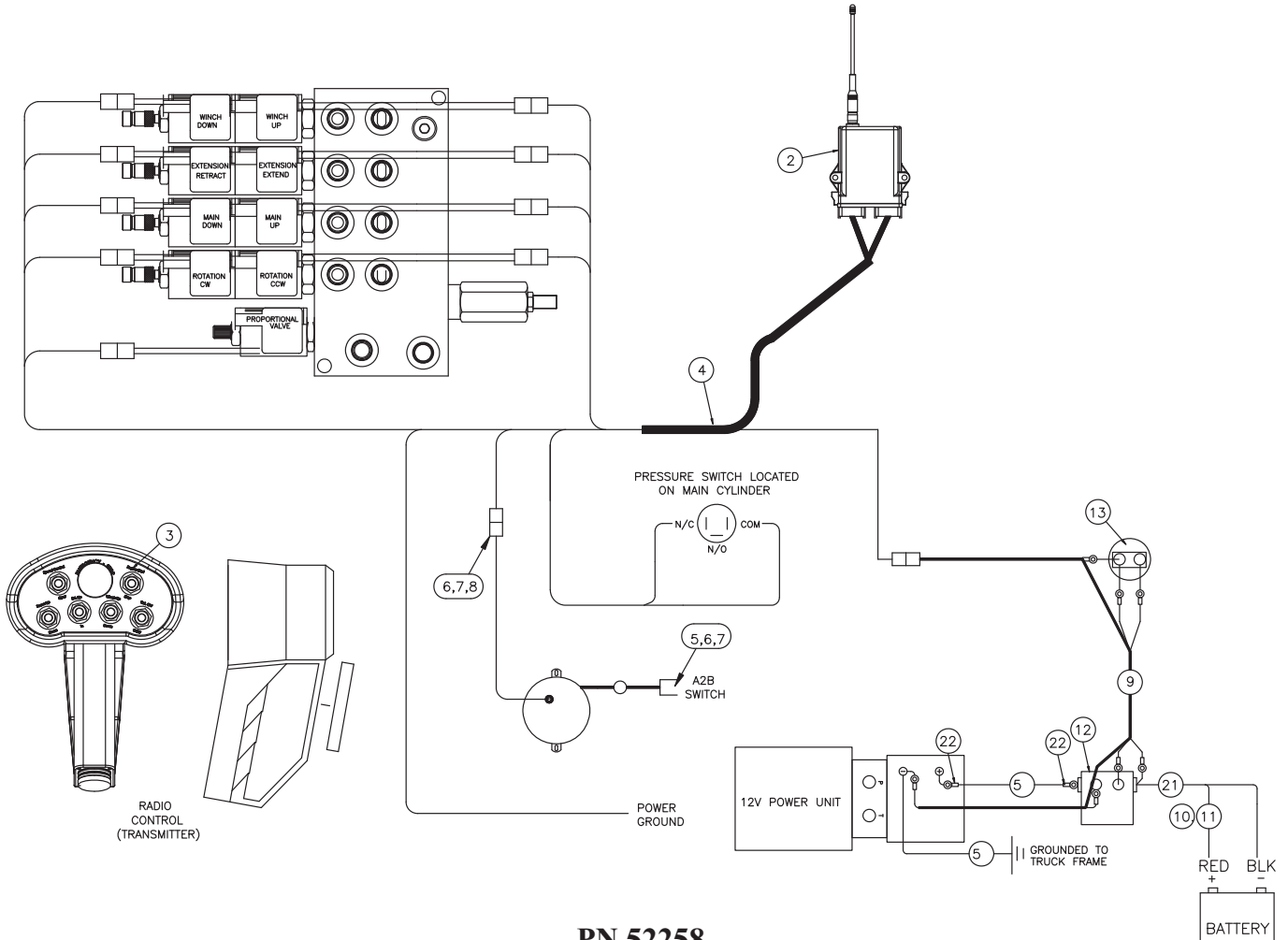
Control Kit (Cradle A2B) - PN 43693



PN 43693

07	9756	CONTACT M TERM SHROUD 18-20	4
06	8384	CABLE SEAL 18-20 PACKARD	4
05	9752	CONNECT 2 PIN SHROUD	2
04	44067	WIRE HARNESS RADIO/VB	1
03	34102	TRANSMITTER - RADIO (PART OF 1)	REF
02	34103	RECEIVER - RADIO (PART OF 1)	REF
01	34101	RADIO CONTROLLER ASSEMBLY	1
ITEM	PART No.	DESCRIPTION	QTY

Control Kit (12V Cradle A2B) - PN 52258

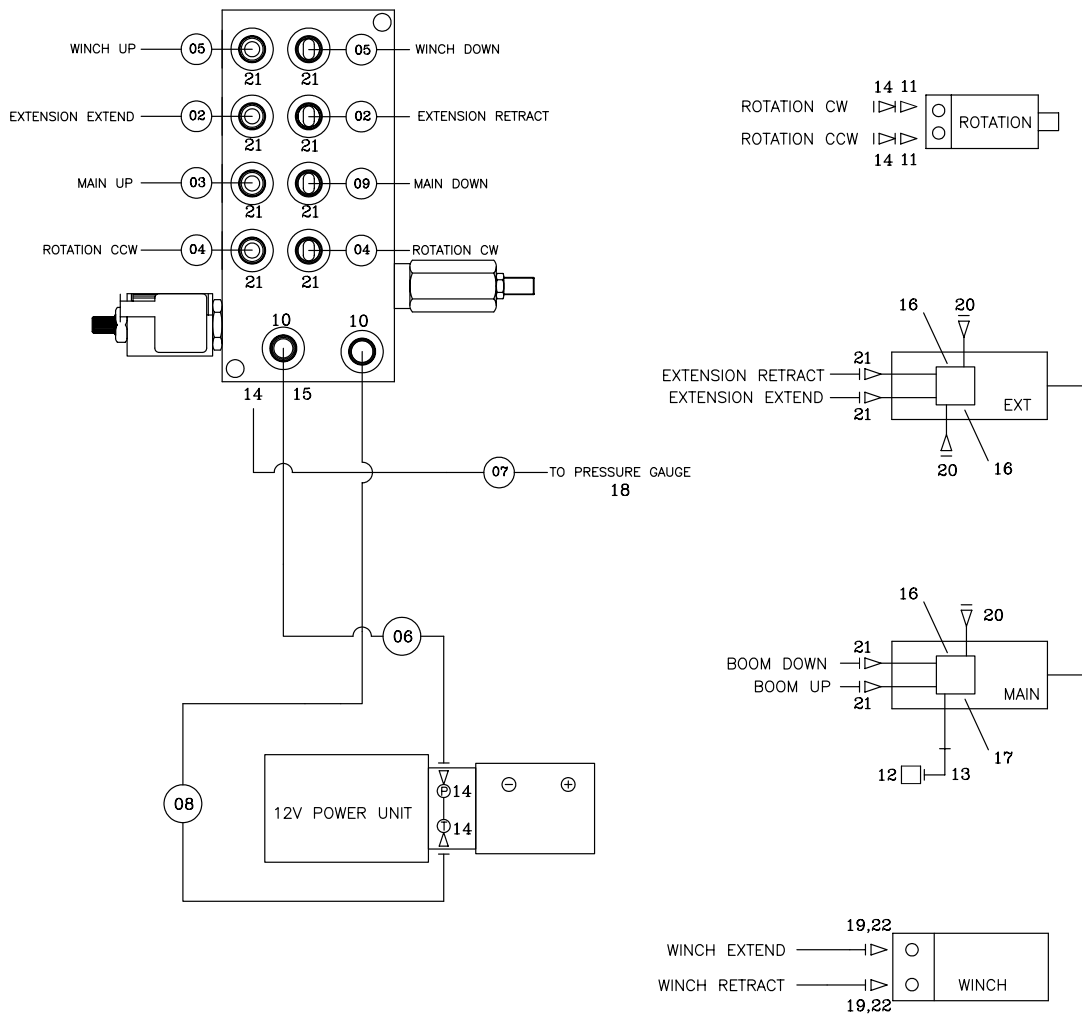


PN 52258

ITEM	PART No.	DESCRIPTION	QTY
01	36976	RADIO CONTROLLER ASM 6 FCTN	1
02	34103	RECEIVER - RADIO (PART OF 1)	1ref
03	34102	TRANSMITTER RADIO 6 FCTN (PART OF 1)	1ref
04	50922	WIRE HARNESS 6 FCTN 5520 12V H2	1
05	17279	CABLE #2 WELDING	20"
06	9752	CONNECT 2 PIN SHROUD PACKARD	2
07	8384	CABLE SEAL 18-20 PACKARD	4
08	9756	CONTACT M TERM SHROUD 18-20	4
09	34658	WIRE HARNESS 5520 SOLENOID	1
10	36435	FUSE 200 AMP 46274	1
11	32523	FUSE HOLDER 46039	1
12	18468	SOLENOID 12V 200 AMP CONT	REF
13	17771	SWITCH PUSH BUTTON	1
14	13561	HEAT SHRINK 0.19 BLACK 4.00L	2
15	15218	HEAT SHRINK 0.50 BLK	2'
16	20466	CABLE #2 2 WIRE (RM)	34'
17	4070	TERML #2X.38 COPPER LUG	8

NOTE: SHIP LOOSE ITEMS 14,15,16,17(6)

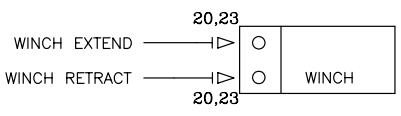
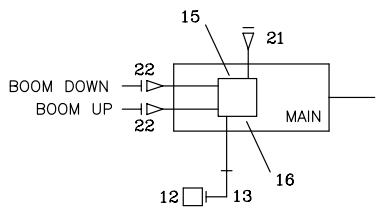
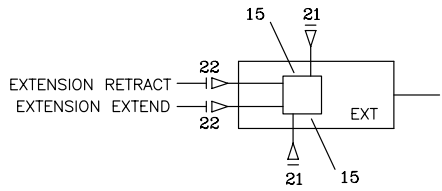
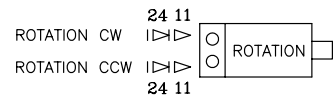
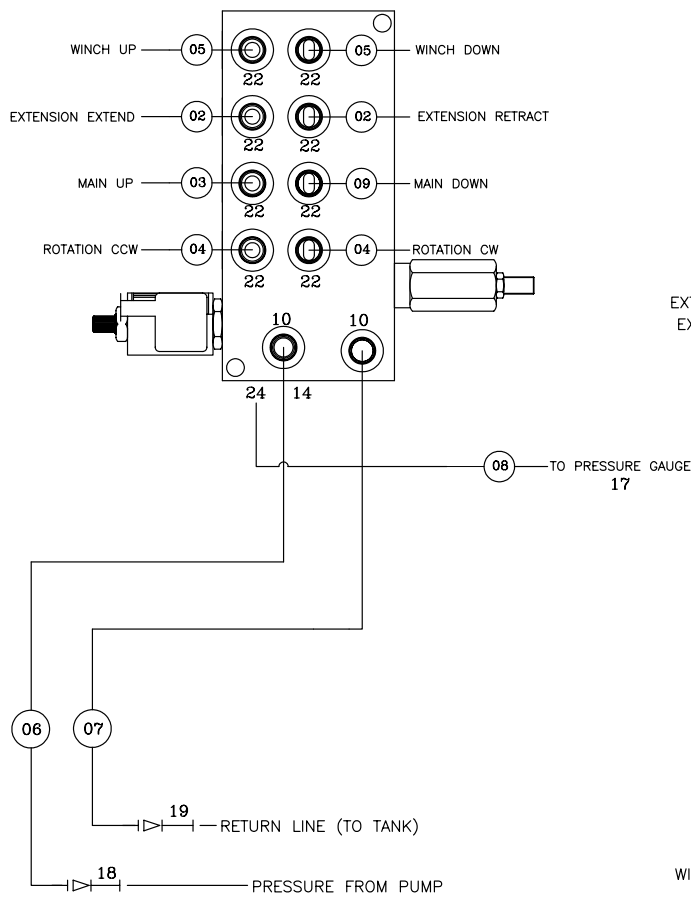
Hydraulic Kit (Electrical Version) - PN 23898



P/N 23898

22	0279	FTG ADAPT 6-F50LO-S	2
21	C4922	FTG ADAPT 4-6 F50LO-S	12
20	C4961	FTG O-RING PLUG	REF
19	20060	FTG ADAPT MBSPP/FSTR 3/8-6 F40HG5	1
18	25890	GAUGE OIL 0-5000 1/4 NPT TOU	1
17	11991	VALVE C-BAL PLUG	REF
16	9803	VALVE C-BAL	REF
15	D1535	PLUG STR HOLLOW HEX 0.50 8-HP50N	1
14	3338	FTG MF/MSTR 90 4-6 C50LO-S	5
13	3861	FTG ML FM O-RING 90 DEG	1
12	44534	SWITCH PRES OVERLD CD-11C-3200R/WD	1
11	C1111	FTG ADAPT MSTR/FSTR 10-6 F50G5	2
10	C0338	FTG MF/MSTR 90 6-C50LO-S	2
09	18290	HOSE-HYD .25 X 19	1ref
08	26021	HOSE-HYD .25 X 33.5	1ref
07	26016	HOSE-HYD .25 X 21	1ref
06	26020	HOSE-HYD .25 X 30.5	1ref
05	13438	HOSE-HYD .25 X 26	2ref
04	23905	HOSE-HYD .25 X 35	2ref
03	23903	HOSE-HYD .25 X 21	1ref
02	23904	HOSE-HYD .25 X 75	2ref
01	23914	HOSE KIT,5520C CRANE (incl:2-6)	1
ITEM	PART No.	DESCRIPTION	QTY

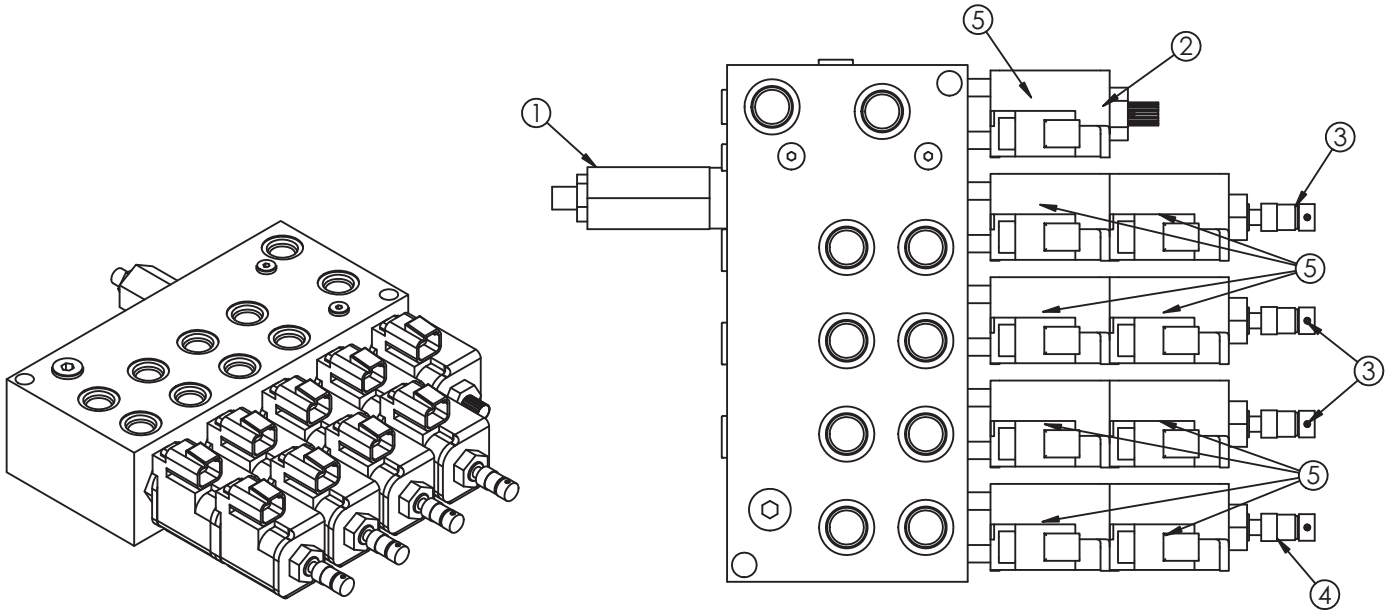
Hydraulic Kit (Hydraulic Version) - PN 23901



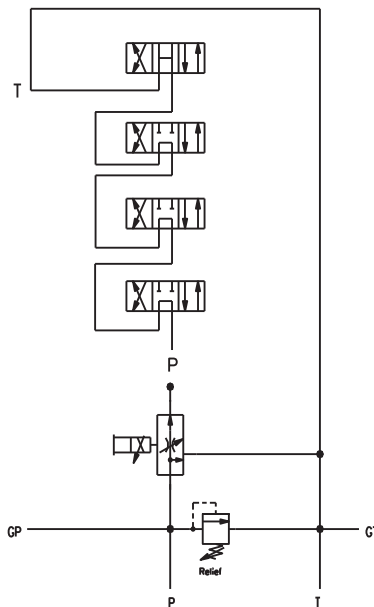
P/N 23901

24	3338	FTG MF/MSTR 90 4-6 C50LO-S	3
23	0279	FTG ADAPT 6-F50LO-S	2
22	C4922	FTG ADAPT 4-6 F50LO-S	12
	C4961	PLUG STR HOLLOW HEX 0.38 6-HP50N	REF
20	20060	FTG ADAPT MBSPP/FSTR 3/8-6 F40HG5	2
19	12172	FTG SWIVEL 0.50 FS/FS PS81 JMJM-8-8	1
18	12171	FTG SWIVEL 0.38 FS/FS PS81 JMJM-6-6	1
17	25890	GAUGE OIL 0-5000 1/4 NPT TOU	1
16	11991	VALVE C-BAL PLUG	REF
15	9803	VALVE C-BAL	REF
14	D1535	PLUG STR HOLLOW HEX 0.50 8-HP50N	1
13	3861	FTG ML FM O-RING 90 DEG	1
12	44534	SWITCH PRES OVERLD CD-11C-3200R/WD	1
11	C1111	FTG ADAPT MSTR/FSTR 10-6 F50G5	2
10	C0338	FTG MF/MSTR 90 6-C50LO-S	2
09	18290	HOSE-HYD .25 X 19	1ref
08	26016	HOSE-HYD .25 X 15	1ref
07	23907	HOSE-HYD .38 X 5	1ref
06	23906	HOSE-HYD .38 X 6	1ref
05	13438	HOSE-HYD .25 X 26	2ref
04	23905	HOSE-HYD .25 X 35	2ref
03	23903	HOSE-HYD .25 X 21	1ref
02	23904	HOSE-HYD .25 X 75	2ref
01	23902	HOSE KIT,5520C CRANE (incl:2-9)	1
ITEM	PART No.	DESCRIPTION	QTY

Valve Bank - PN 50592



HYDRAULIC SCHEMATIC

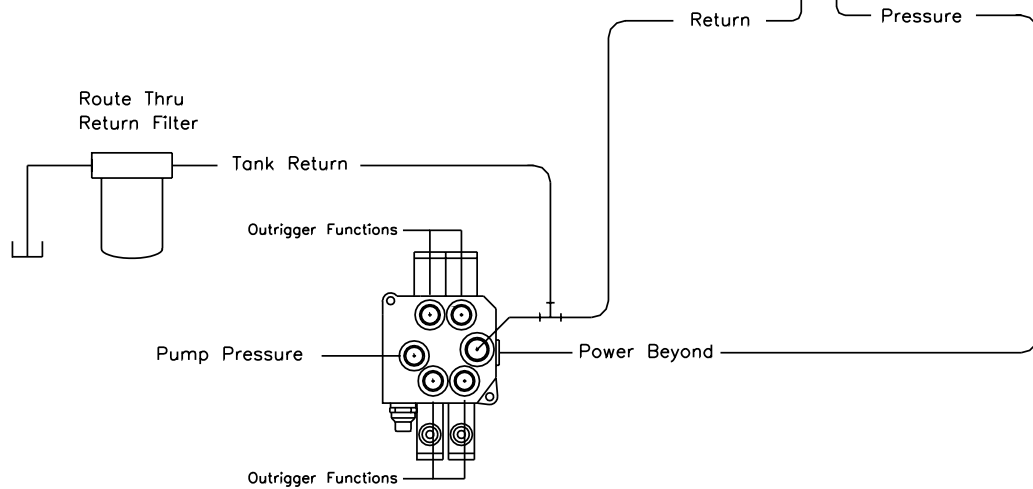
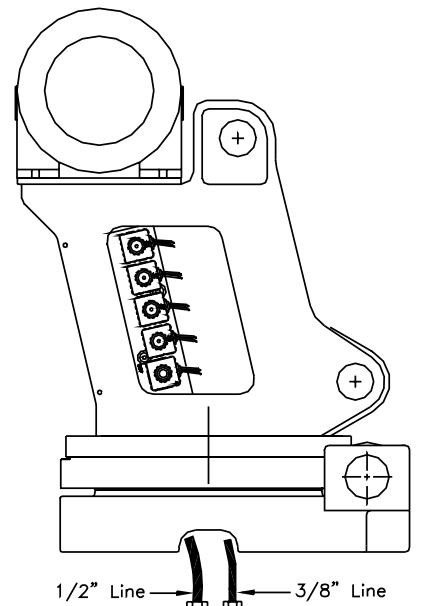


PN 50592

ITEM	PART	DESCRIPTION	QTY
1	25367	RELIEF VALVE 24685/24690	1
	25368	SEAL KIT 25367	
2	25381	VALVE FLW CTRL PRP/JP04C3150N 0-4	1
	25369	SEAL KIT 24960/25381	
3	25371	VALVE SOLND 3 POS 4 WAY TAND G04571	3
4	25372	VALVE SOLND 3 POS 4 WAY OPEN G04591	1
	25373	SEAL KIT 25371/25372	
	44532	COIL 12VDC DUETSCH CAP012H	
5	44532	COIL 12VDC DUETSCH CAP012H	9

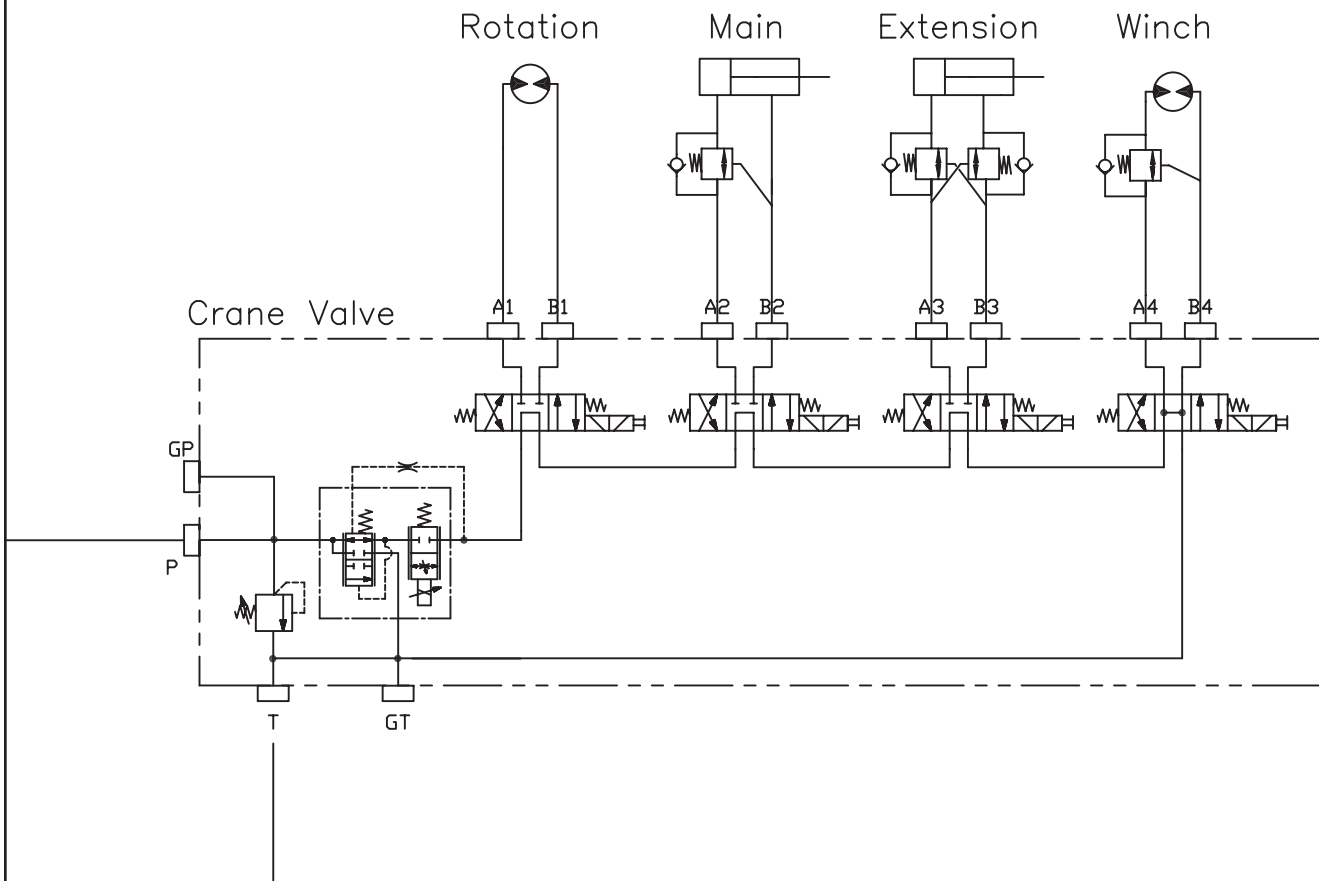
Hydraulic Installation

1. After mounting, locate the pressure and return lines. Note: Pressure line is 3/8" hose; Return line is 1/2" hose. Hoses are terminated using swivel fittings.
2. Install hydraulic lines per diagram below. Note: Outrigger valve supplies oil to crane using the Power Beyond feature.
3. Install hydraulic reservoir with return filter. Attach pump pressure line to valve, return link to tank.
4. Fill system with hydraulic oil (Mobil DTE-13M is recommended).



Typical Outrigger Valve
with Power Beyond Capabilities

Hydraulic System



Stability Procedure

Definition of Stability for the Stellar Telescopic Crane Products:

A truck is stable until the load cannot be lifted off the ground with the winch, without tipping over the truck. Every Stellar crane installed must be tested for stability to determine the actual load capacity of the final truck package. The actual test data must be recorded and supplied with the truck at the time of in-service and should be kept with the truck at all times. The following procedure will test the truck package for stability and will provide a stability capacity chart. The load limit information shown on the stability capacity chart is formulated on 85% tipping.

Set Up:

1. Locate the truck on a test course in position for loading and engage travel brakes.
2. Set outriggers so that they make contact with firm, level footings.
3. Operate the crane under partial load to assure operator proficiency and proper machine function.

5520 Stability Data

Max Horizontal Reach: 240" (From the center of rotation to boom tip)
Stability Test Weight: 1475 lbs.

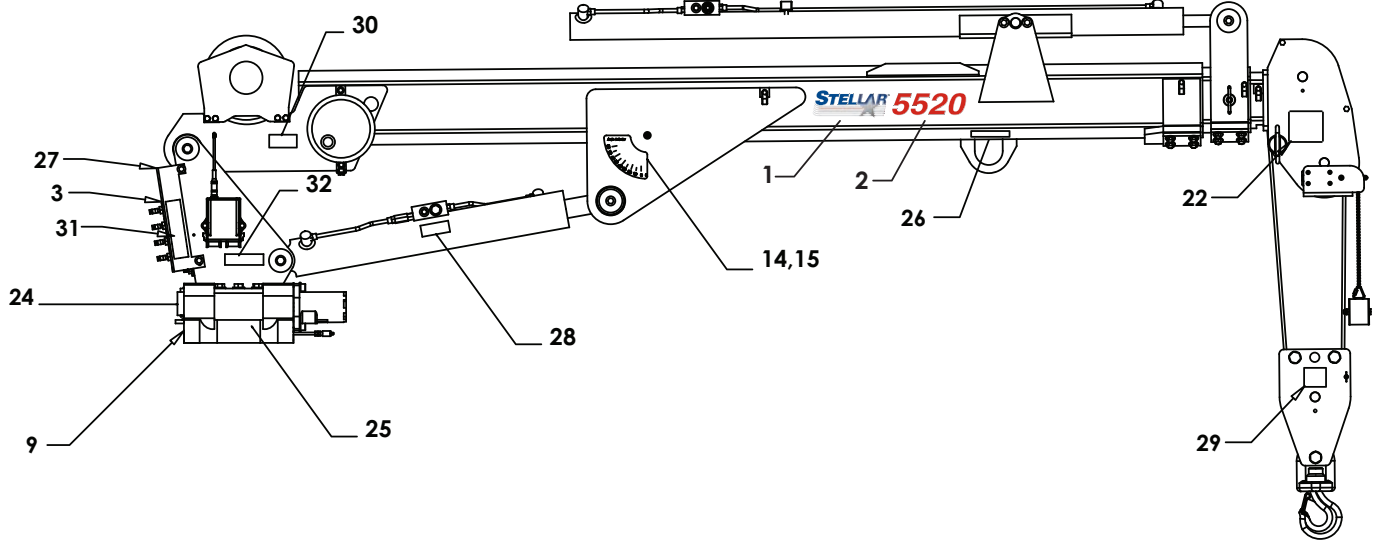
Test Procedure

1. Rotate the crane into Zone 1 position.
2. With the crane fully retracted and the boom horizontal, winch the test weight off the ground. Note: Keep weight within six inches of the ground at all times.
3. Extend the boom outward until full extension has been reached or until the truck becomes unstable (Again, use the winch to keep the weight within six inches of the ground.)
4. If the boom goes full extension without becoming unstable, the crane is termed stable for this zone and 100% can be written in the Zone 1 data box.
5. If the truck becomes unstable prior to going full extension, retract the boom until the truck becomes stable and measure the horizontal reach in this position (center of rotation to boom tip). This is the stable horizontal reach for this zone. Stable horizontal reach divided by Maximum horizontal reach multiplied by 100 equals the percentage of rated capacity for this zone. Use the following formula to determine the percentage of rated capacity:

$$\frac{\text{Stable Horizontal Reach}}{\text{Max Horizontal Reach}} \times 100 = \text{Percentage of Rated}$$

6. Record this number in the data box for Zone 1. This is the revised capacity due to stability for this zone.
7. Repeat this procedure for each zone until the worksheet is completed.
8. This is the revised capacity based on stability of this package.

Decal Kit Placement - PN 23909



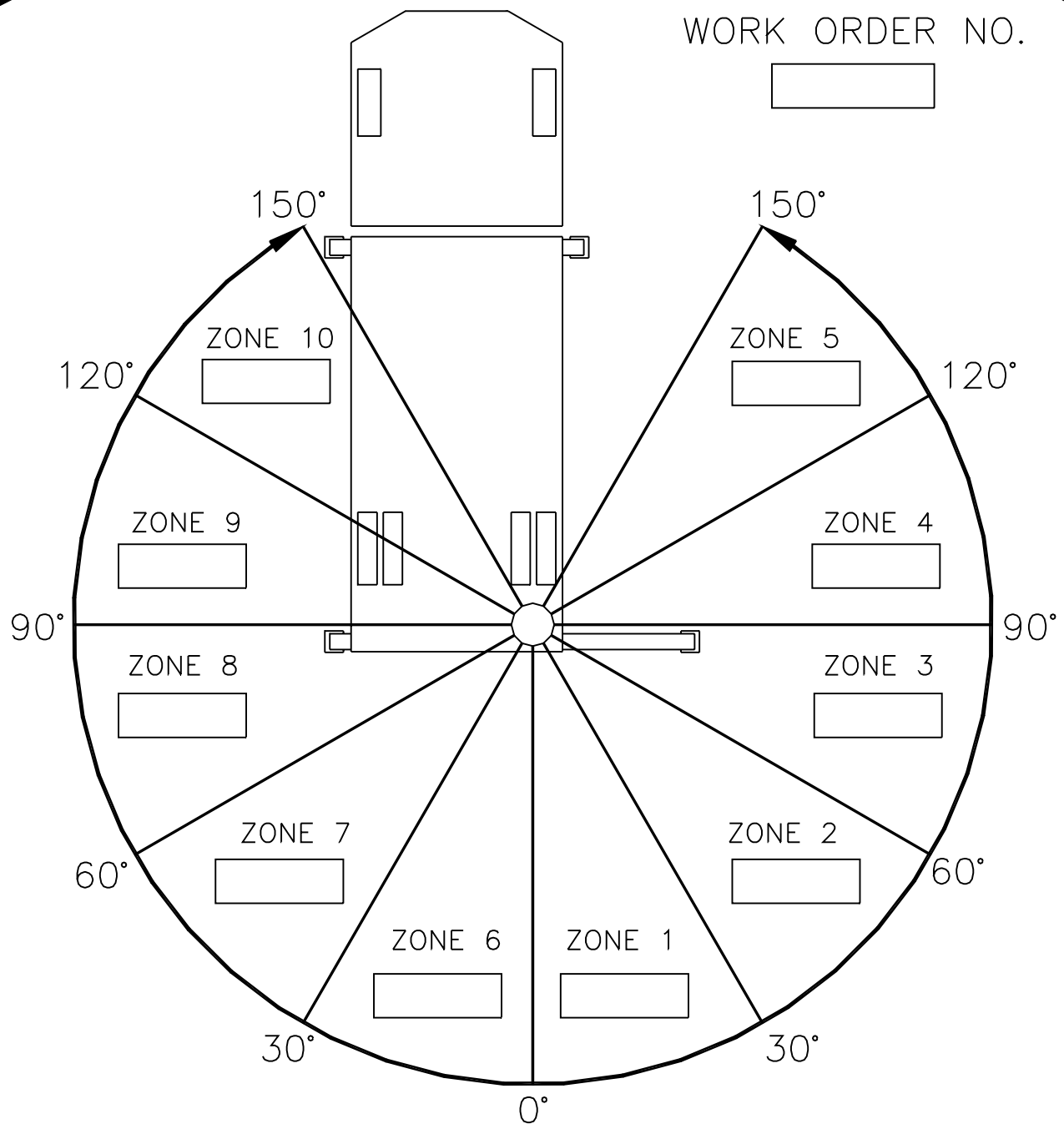
PN 23909

*16	12451	DECAL HOISTING PERSONNEL	1	32	15172	DECAL ASME/ANSI B30.22/B30.5	1
15	13819	DECAL-ANGLE INDICATOR SS	1	31	41068	DECAL VB CONTROL MECH CRANE	1
14	13820	DECAL ANGLE INDICATOR CS	1	**30	35234	DECAL STELLAR MADE IN THE USA	1
*13	C1179	DECAL-ELECTROCUTION 4.5x7.5	2	29	38471	DECAL SNATCH BLOCK CAP 5 TON	1
*12	C5918	DECAL-DANGER MOVING O.R.	2	28	28256	DECAL WARNING OVERLOAD DEVICE	1
*11	C4795	DECAL-DANGER O.R.	2	27	25159	DECAL WARNING MANUAL OVERRIDES	1
*10	4190	DECAL-DANGER	1	26	24712	DECAL CAUTION STOW HOOK	1
09	9188	DECAL-ROTATE/GREASE	1	25	15171	DECAL GREASE WORM DRIVE BEARINGS	1
*08	4189	DECAL-DANGER	1	24	4188	DECAL-ROTATION ALIGNMENT	1
*07	4186	DECAL-ELECTROCUTION 2x2.75	1	*23	C4541	DECAL-CRANE STOWING	1
*06	C4544	DECAL-DANGER	1	22	12300	DECAL-TWO BLOCKING	1
*05	C4540	DECAL-DANGER	1	*21	4214	DECAL-SERVICE	1
*04	C4545	DECAL-ELECTROCUTION 5x13	4	*20	C0568	DECAL-DIESEL	2
*03	13758	DECAL CAPACITY	2	*19	12452	DECAL MANUAL EXT	1
02	55131	DECAL 5520 IDENTIFICATION	2	*18	C5911	DECAL-STELLAR 2x4.5	3
01	55128	DECAL STELLAR LOGO 2.75 X 7.75	2	*17	C5910	DECAL-STELLAR 4x9.5	1
ITEM	PART No.	DESCRIPTION	QTY	ITEM	PART No.	DESCRIPTION	QTY

**THESE DECALS NOT INCLUDED WITH THE DECAL KIT

*USE THESE DECALS WITH BODY PACKAGE

Stability Capacity Chart



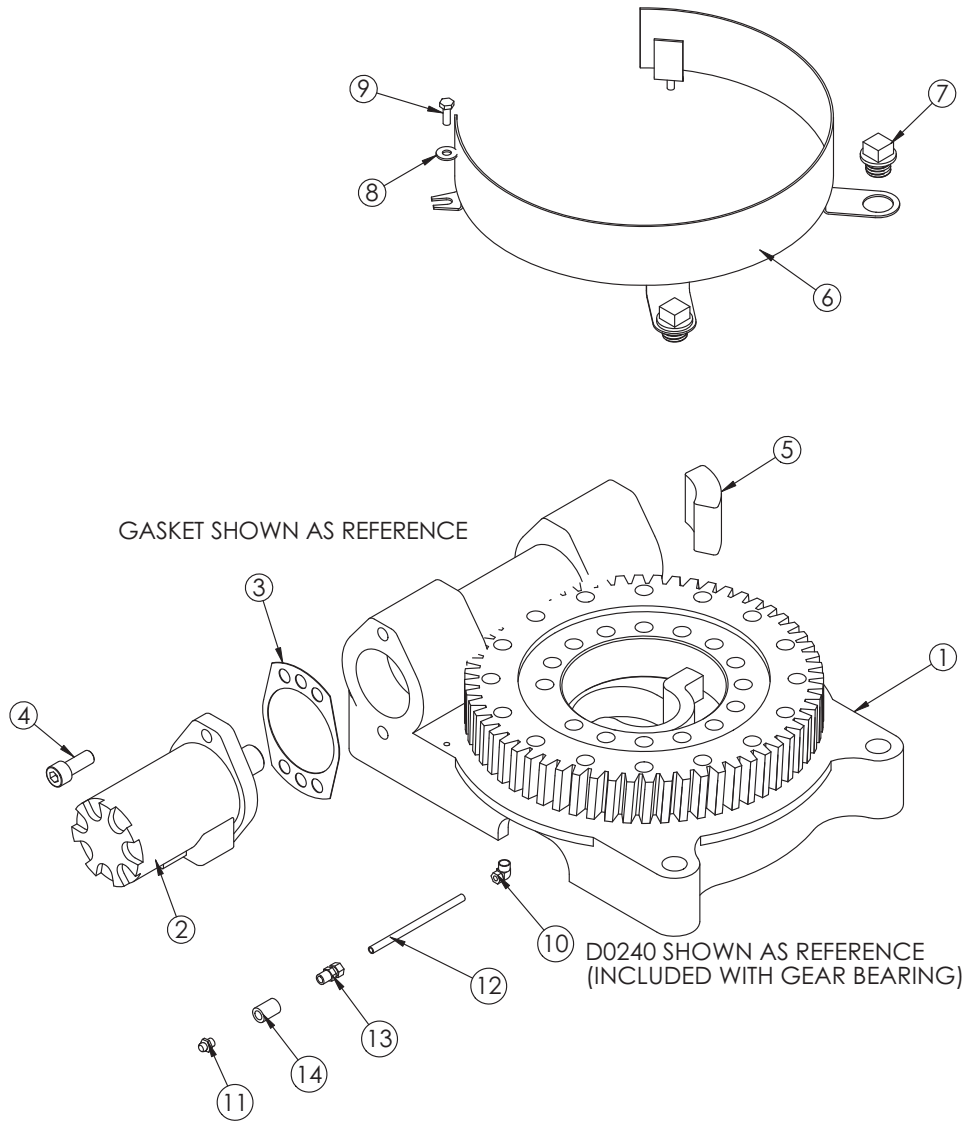
BOXES TO BE FILLED IN WITH PERCENTAGE OF RATED CAPACITY IN THE APPROPRIATE REGION.

STABILITY CAPACITY CHART

STABILITY is based on this specific truck package.

Chapter 3 - Assembly Drawings

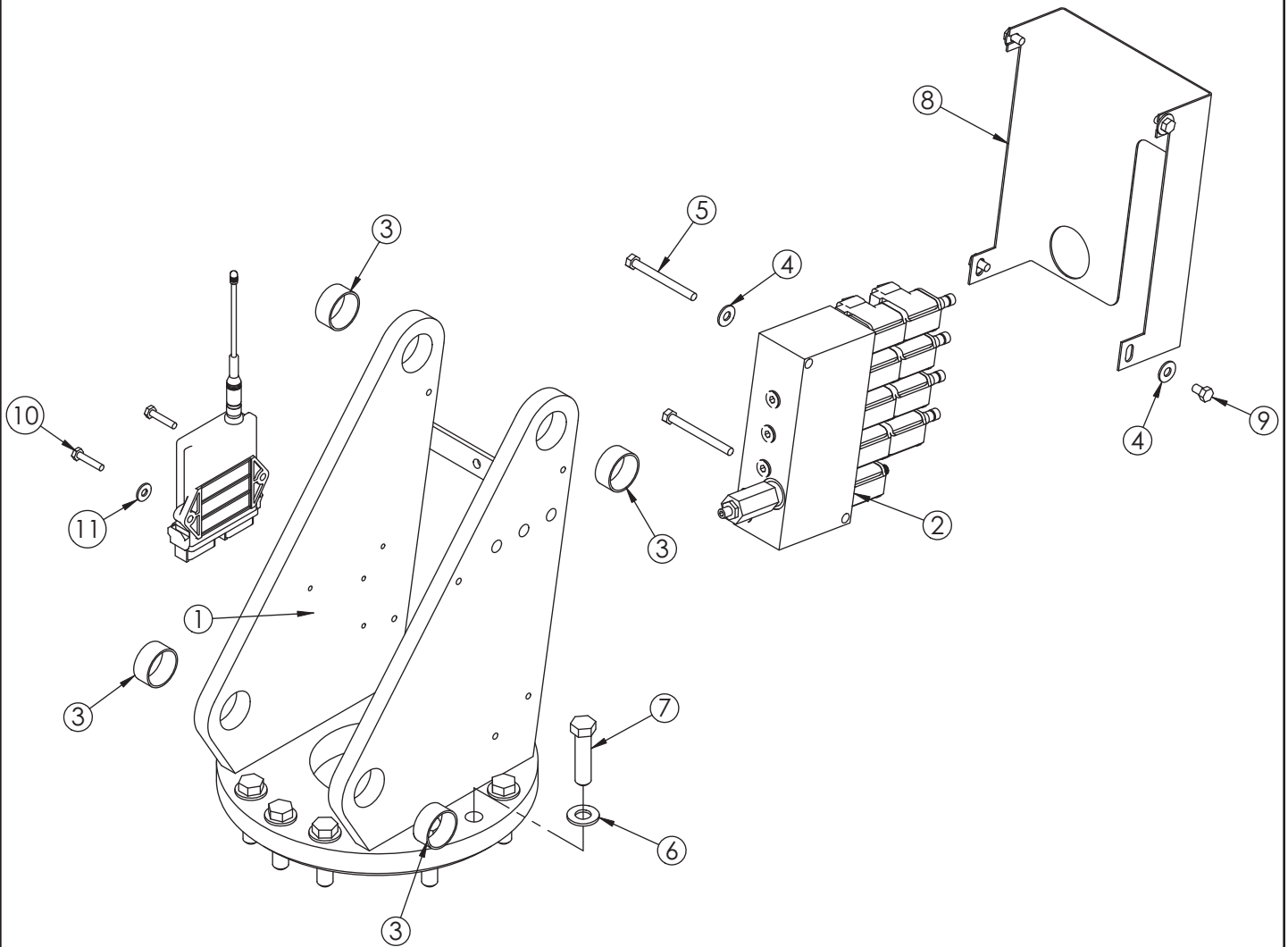
Base Assembly - PN 21814



PN 21814

ITEM	PART	DESCRIPTION	QTY.
1	16653	BEARING SWING DRIVE CAST	1
2	D1204	ROTATION MOTOR 5520	1
3	21151	GASKET MOTOR 008-10056-1	1
4	D1307	CAP SCR 0.50-13X1.25 SH	2
5	17750	STOP 3515	1
6	18945PC	GUARD TTB 5520 CRANE	1
7	18948	CAP SCR 0.88-9 X .63 PLASTIC	2
8	0340	WASHER 0.25 FLAT	2
9	0479	CAP SCR 0.25-20X0.75 HHGR5	2
10	D0240	FTG ELL 0.13 CPRSN TUBE TO NPT	1
11	c1592	ZERK 1/8 NPT STRAIGHT	1
12	22393	TUBE AIR	1
13	D1345	FTG CPRSN 0.12NPT/0.25 TUBE	1
14	C2256	FTG COUPLER PIPE 0.13	1

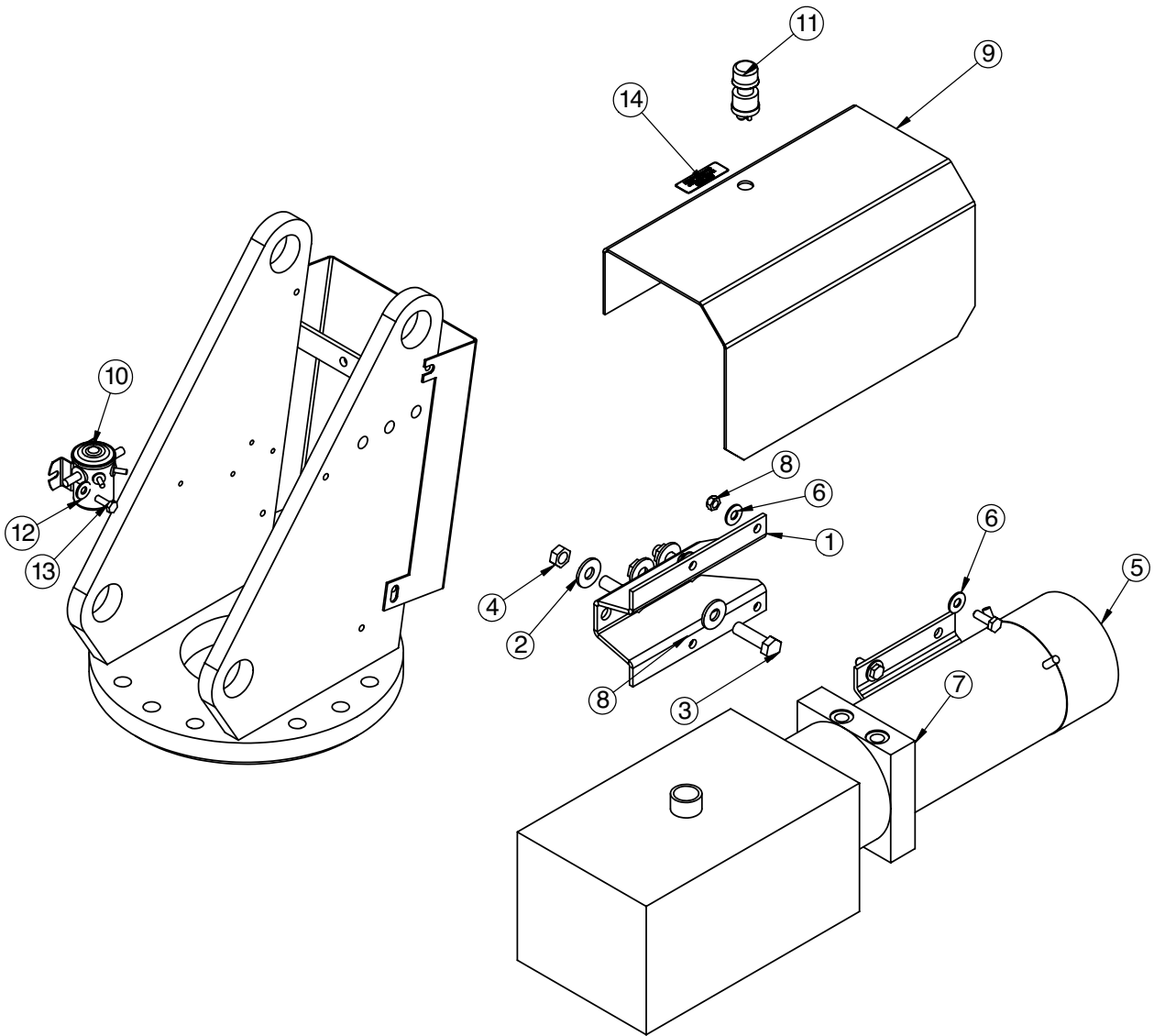
Mast Assembly - PN 21815



PN 21815

ITEM	PART	DESCRIPTION	QTY.
1	21530	MAST 5520C	1
2	50592	VB 4 SECT W/PROP STER4GPM DEUTSCH	1
3	21810	BUSHING GSI-2426-12 1.50X0.75	4
4	0343	WASHER 0.31 USS FLAT ZINC	6
5	12178	CAP SCR 0.31-18X3.25 HHGR5	2
6	C5902	WASHER 0.63 SAE FLAT YELLOW GR8	12
7	C1026	CAP SCR 0.63-11X2.50 HHGR8 ZY	12
8	25844PC	GUARD VB 5520C MULTIFUNCTION VB	1
9	0484	CAP SCR 0.31-18 X 0.50 HHGR5	4
10	0437	CAP SCR 0.25-20X1.25 HHGR5	2
11	0340	WASHER 0.25 FLAT	2

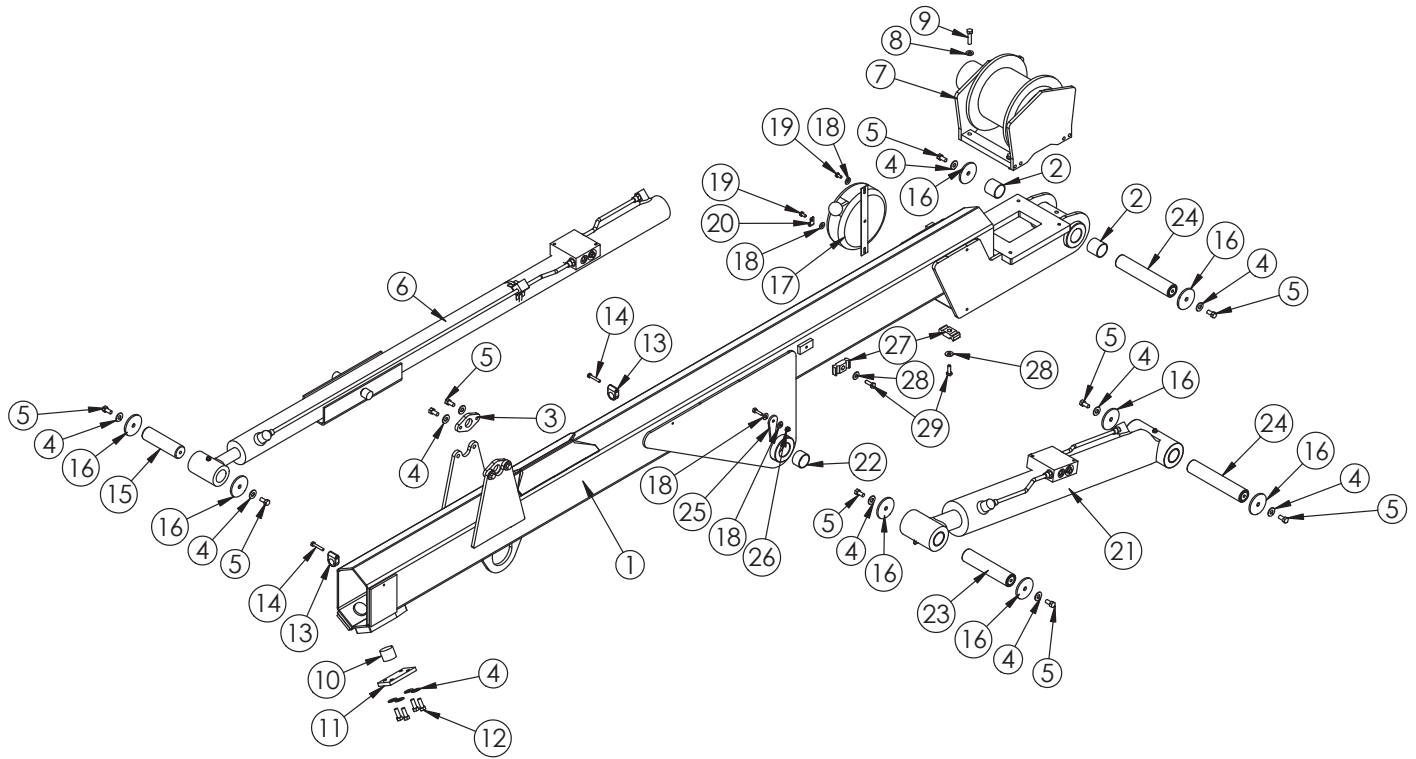
Power Unit Assembly (Electric Version Only) - PN 23913



P/N 23913

ITEM	PART	DESCRIPTION	QTY.
1	17132	BRKT POWER UNIT 5520	1
2	0352	WASHER 0.50 USS FLAT ZINC	6
3	0500	CAP SCR 0.50-13X1.75 HHGR5	3
4	C6106	NUT 0.50-13 HHGR5 NYLOC	3
5	16994	POWER UNIT 12V 5520 HORZ	1
6	0343	WASHER 0.31 USS FLAT ZINC	8
7	C0922	CAP SCR 0.31-18X1.00 HHGR5	4
8	0342	NUT 0.31-18 HH NYLOC	4
9	19997	COVER POWER UNIT 5520	1
10	18468	SOLENOID 12V 200 AMP CONT 24143	1
11	17771	SWITCH PUSH BUTTON 9216-03	1
12	0340	WASHER 0.25 FLAT	1
13	0479	CAP SCR 0.25-20X0.75 HHGR5	1
14	18472	DECAL MANUAL OPERATION 5520	1
15	25844	GUARD VB 5520C MULTIFUNCTION VB	1

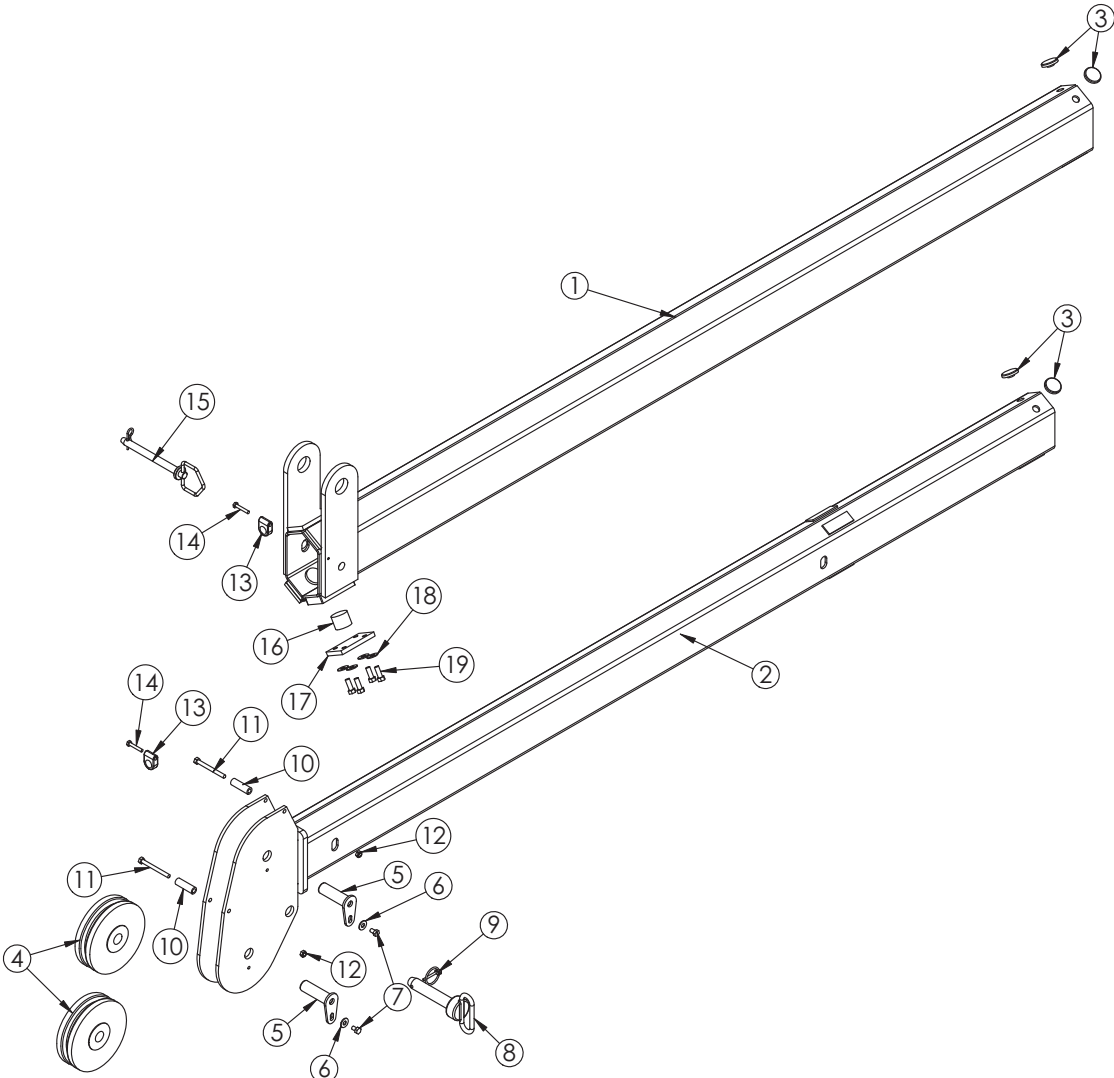
Main Boom Assembly - PN 37551



PN 37551

ITEM	PART	DESCRIPTION	QTY.	ITEM	PART	DESCRIPTION	QTY.
1	70346	INNER BOOM 5520C NEW WINCH MNT	1	16	7403	PIN CAP 0.44X2.50X0.19	8
2	0067	BUSHING BPC-2426-24 1.50X1.50	2	17	11544	CORD REEL 6620	1
3	3267PC	PLATE CYLINDER MTG	2	18	0340	WASHER 0.25 FLAT	6
4	C6353	WASHER 0.38 FLAT GR8	20	19	0478	CAP SCR 0.25-20X0.50 HHGR5	2
5	9843	CAP SCR 0.38-16X0.75 HHGR8 (TRQ 33 FT/LBS)	12	20	C5606	CLAMP 0.25 BLK VINYL	1
6	26848	CYLINDER ASM 2.50X60.00	1	21	26847	CYLINDER ASM 3.50X21.00	1
7	21528W	WINCH 2500 5520 CRANE	1	22	16067	BUSHING QSI-2426-16	2
8	C6353	WASHER 0.38 SAE FLAT YELLOW GR8	4	23	10547ZP	PIN 1.50X6.88 D&T	1
9	16962	CAP SCR 0.38-16X1.50 HHGR8	4	24	10545ZP	PIN 1.50x8.13 D&T	2
10	21536	WEAR PAD .1.19X1.50 RND	2	25	19881PC	PLATE ANGLE INDICATOR 3315	2
11	21809PC	PLATE 1ST EXT 3315 WEAR PAD	2	26	0333	NUT 0.25-20 HHGR5 NYLOC	2
12	13573	CAP SCR 0.38-16X1.00 HHGR8	8	27	8622	CLAMP HOSE/TUBE AG-2	2
13	0337	HOSE CLAMP LN 3160 PP	2	28	0343	WASHER 0.31 USS FLAT ZINC	2
14	0220	CAP SCR 0.25-20 X 1.50 HHGR5	2	29	C0922	CAP SCR 0.31-18X1.00 HHGR5	2
15	21811ZP	PIN 1.50X5.25 D&T	1				

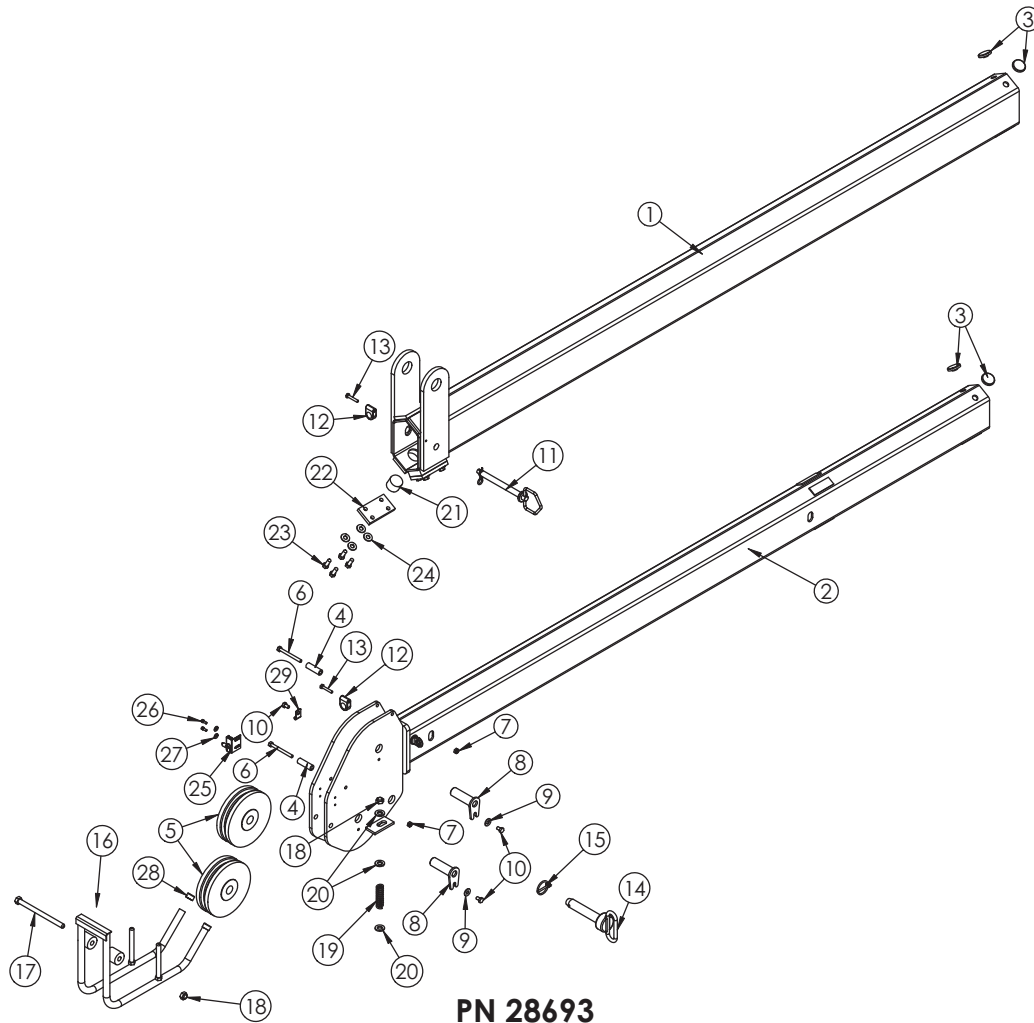
Extension Boom Assembly - PN 21817



PN 21817

ITEM	PART	DESCRIPTION	QTY.
1	21173	EXT BOOM 1ST 5520C	1
2	21165	EXT BOOM 2ND 5520C	1
3	21537	WEAR PAD 0.25X1.50 RND	4
4	11545	SHEAVE 6620 6.75 DIA .31R/1.94 THK	2
5	9706ZP	PIN TEAR DROP 1.00X3.25	2
6	0343	WASHER 0.31 USS FLAT ZINC	2
7	0484	CAP SCR 0.31-18 X 0.50 HHGR5	2
8	12824	PIN HITCH 1.00X4.50	1
9	5753	PIN 0.19X1.56 LYNCH	1
10	27719	SPACER BOOM TIP 6620 UHMW	2
11	12178	CAP SCR 0.31-18X3.25 HHGR5	2
12	0342	NUT 0.31-18 HH NYLOC	2
13	0337	HOSE CLAMP LN 3160 PP	2
14	0220	CAP SCR 0.25-20 X 1.50 HHGR5	2
15	D1298	PIN HITCH 0.63X6.25	1
16	21536	WEAR PAD .1.19X1.50 RND	2
17	21809PC	PLATE 1ST EXT 3315 WEAR PAD	2
18	C6353	WASHER 0.38 FLAT GR8	8
19	13573	CAP SCR 0.38-16X1.00 HHGR8	8

Extension Boom Assembly (Optional)- PN 28693

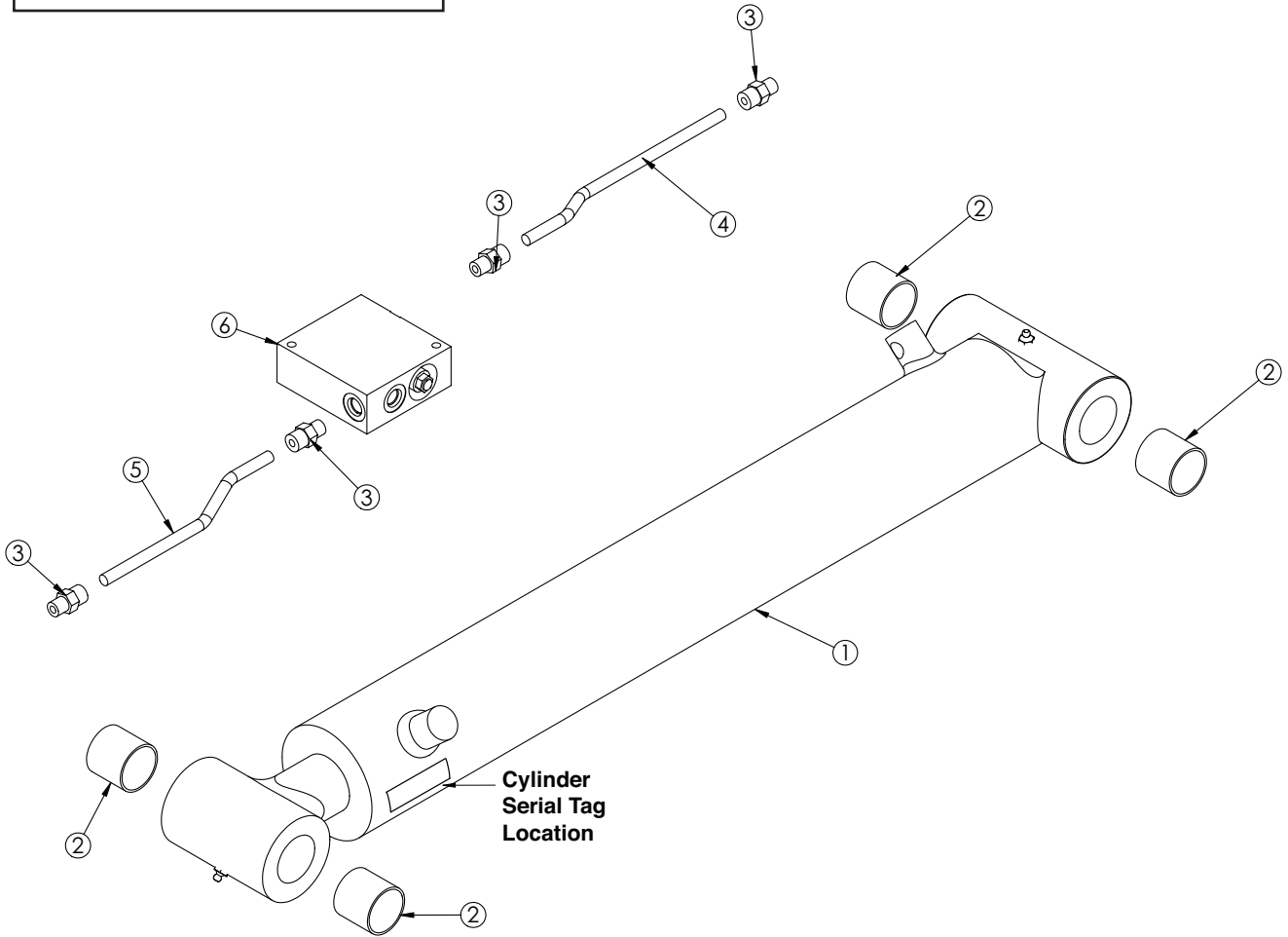


PN 28693

ITEM	PART	DESCRIPTION	QTY.
1	21173	EXT BOOM 1ST 5520C	1
2	28691	EXT BOOM 2ND 5520C SUMMIT	1
3	21537	WEAR PAD 0.25X1.50 RND	4
4	27719	SPACER BOOM TIP 6620 UHMW	2
5	11545	SHEAVE 6620 6.75 DIA .31R/1.94 THK	2
6	12178	CAP SCR 0.31-18X3.25 HHGR5	2
7	0342	NUT 0.31-18 HH NYLOC	2
8	9706	PIN TEAR DROP 1.00X3.25	2
9	0343	WASHER 0.31 USS FLAT ZINC	2
10	0484	CAP SCR 0.31-18 X 0.50 HHGR5	3
11	D1298	PIN HITCH 0.63X6.25	1
12	0337	HOSE CLAMP LN 4190 PP	2
13	0220	CAP SCR 0.25-20 X 1.50 HHGR5	2
14	12824	PIN HITCH 1.00X4.50	1
15	5753	PIN 0.19X1.56 LYNCH	1
16	27717PC	CRADLE WLDMT A-2-BLOCK 6620 SUMMIT	1
17	13915	CAP SCR 0.50-13X7.00 HHGR5	1
18	C6106	NUT 0.50-13 HHGR5 NYLOC	3
19	27710	SPRING ANTI 2 BLOCK SUMMIT	2
20	D0790	WASHER 0.50 FLAT GR8	6
21	21536	WEAR PAD .1.19X1.50 RND	2
22	21809PC	PLATE 1ST EXT 3315 WEAR PAD	2
23	13573	CAP SCR 0.38-16X1.00 HHGR8	8
24	C6353	WASHER 0.38 FLAT GR8	8
25	29085	SWITCH LIMIT E1117-B9111-6C	1
26	31132	SCREW #10-24X0.50 SH SS	2
27	D0178	WASHER #10 SAE FLAT ZINC	2
28	29199	CAP RUBBER CRADLE A2B	2
29	31279	CLAMP 0.31 BLK VINYL	1

Main Cylinder Assembly - PN 26847

Note: Main Cylinder uses Stellar Seal Kit P/N 10705



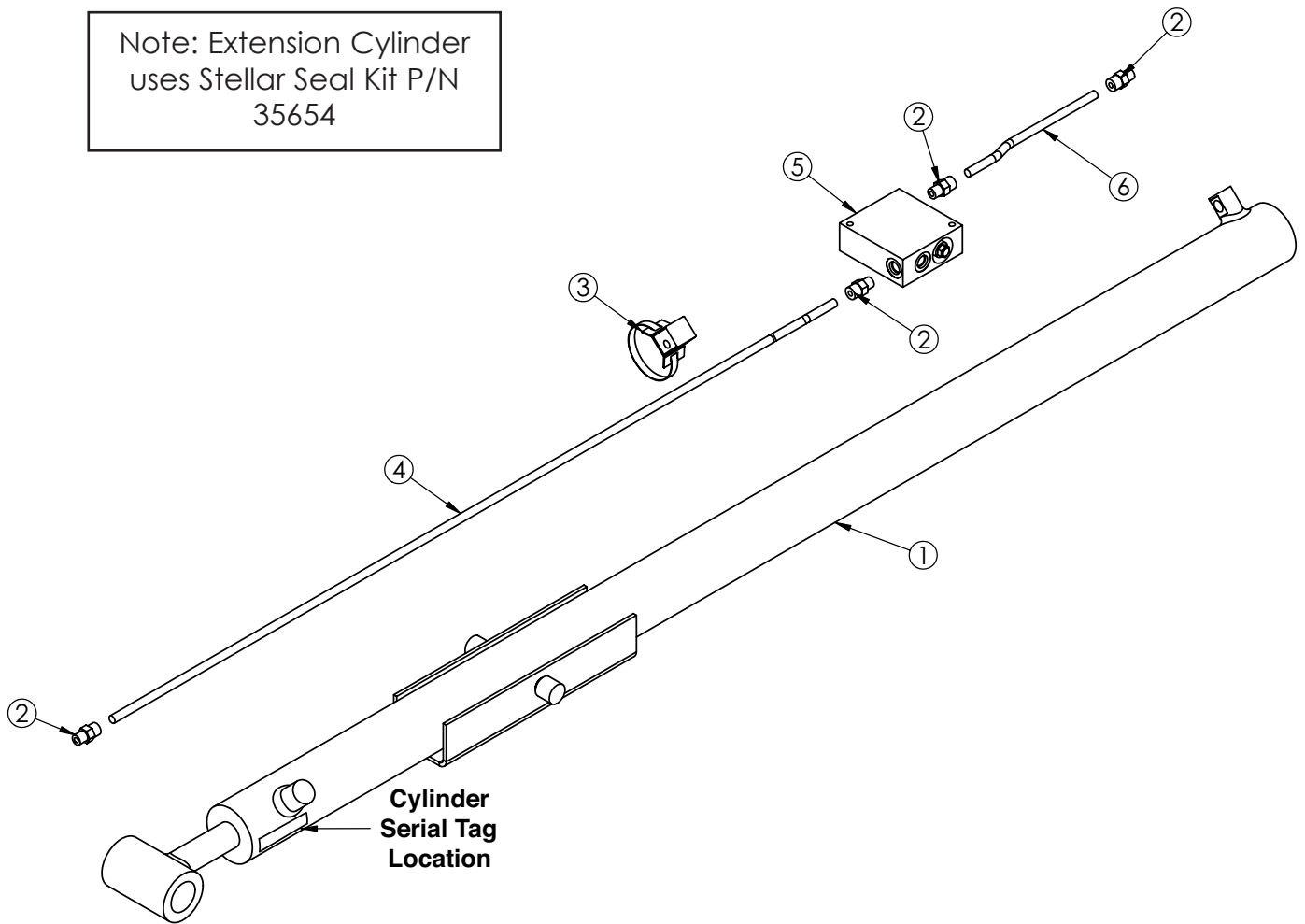
BUSHINGS SHOWN AS REFERENCE

PN 26847

ITEM	PART	DESCRIPTION	QTY.
1	13754	CYLINDER 3.50X21.00	1
2	0067	BUSHING BPC-2426-24 1.50X1.50	4
3	0279	FTG ADAPT 6-F5OLO-S	4
4	26212	TUBE ASM 0.38X9.63 MAIN CYL 6620	1
5	15173	TUBE ASM 0.38X7.81 MAIN CYL 5520	1
6	13080	MANIFOLD SINGLE T11A 3500 PSI	1

Extension Cylinder Assembly - PN 26848

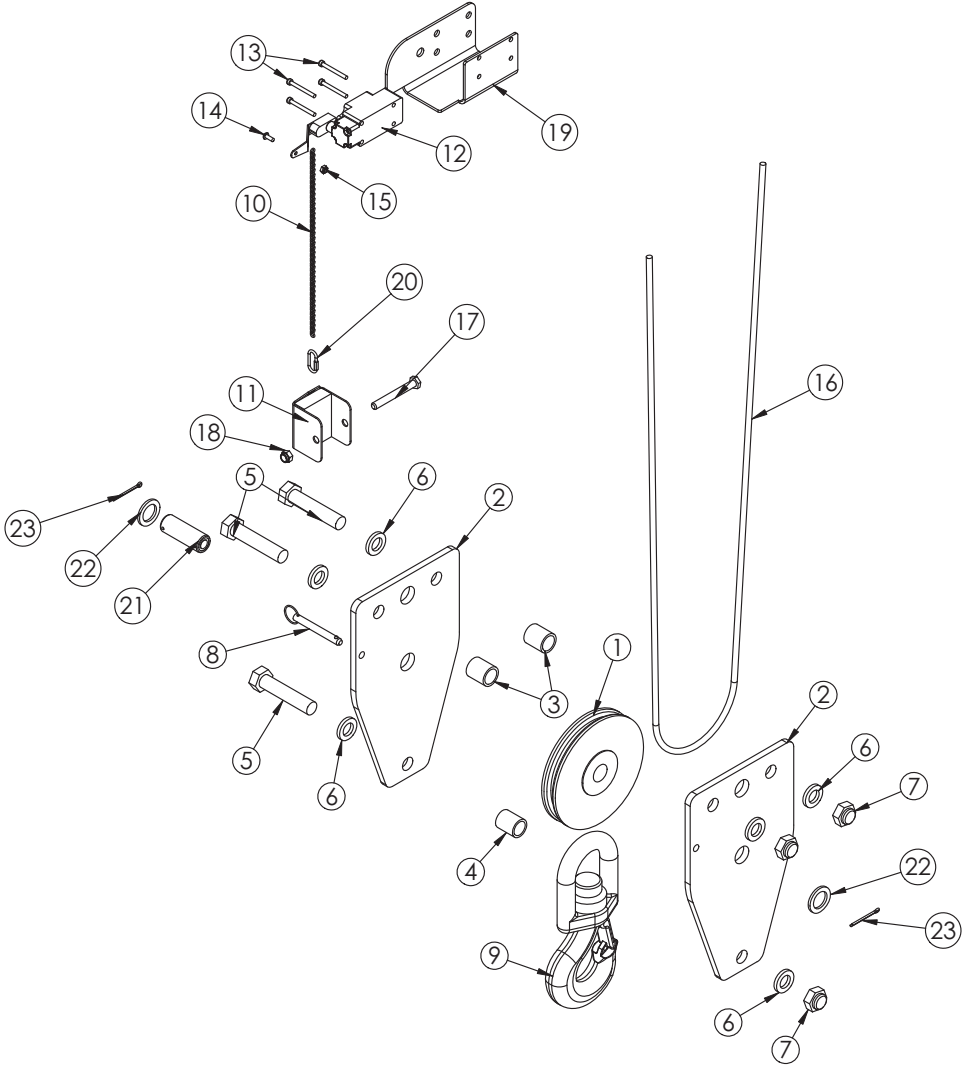
Note: Extension Cylinder uses Stellar Seal Kit P/N 35654



P/N 26848

ITEM	PART	DESCRIPTION	QTY.
1	21538	CYLINDER 2.50 X 60.00	1
2	0279	FTG ADAPT 6-F5OLO-S	4
3	14929	CLAMP 0.38 PORT TUBE	1
4	13575	TUBE ASM 0.38X45.00 EXT CYL 5520	1
5	16154	MANIFOLD DOUBLE T11A 3500 PSI	1
6	12158	TUBE ASM 0.38X8.88 MAIN CYL 6620	1

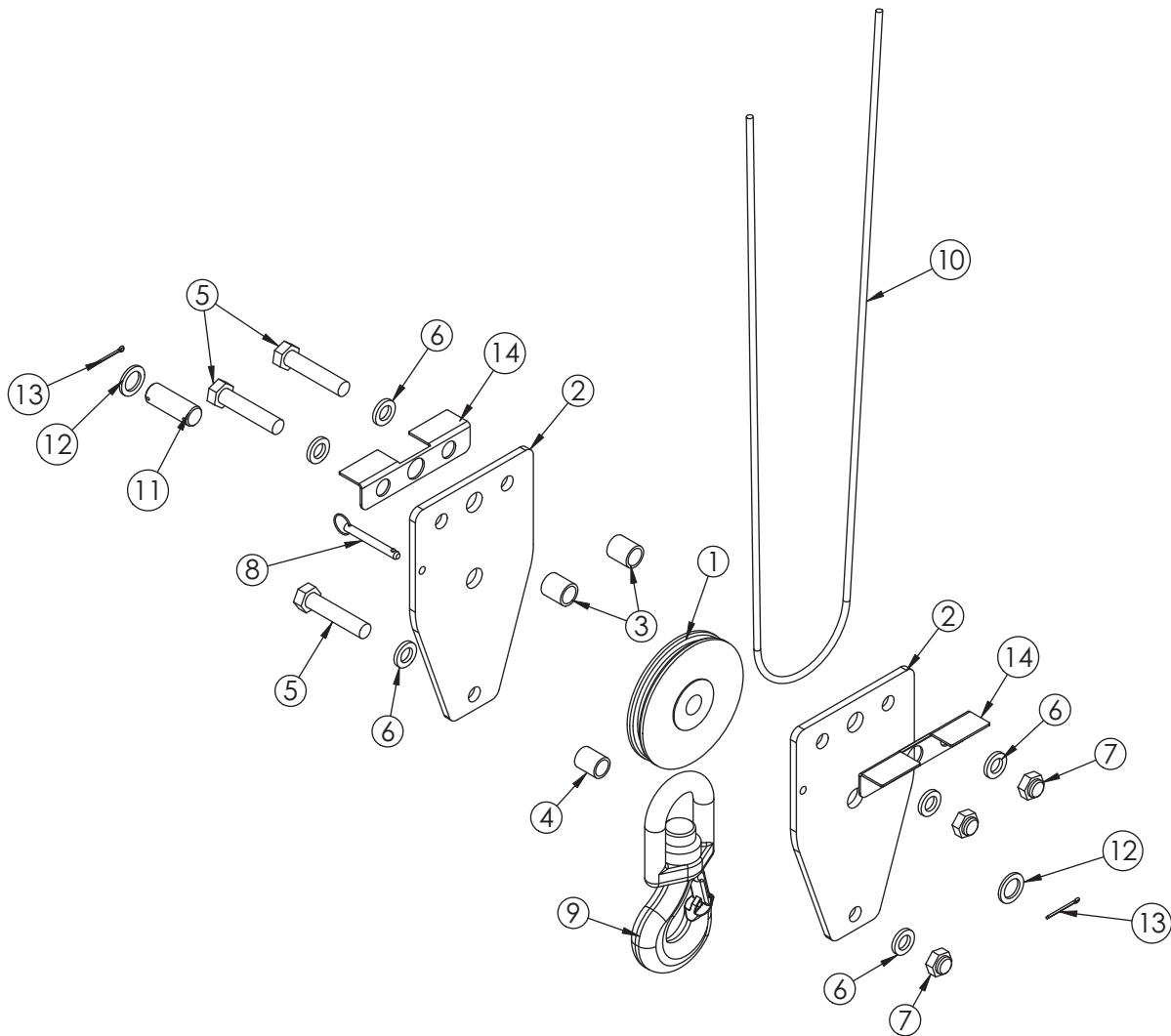
Cable & Hook Assembly - PN 38202



PN 38202

ITEM	PART	DESCRIPTION	QTY.
1	11934	SHEAVE 6620 6.50 DIA .31R/1.12 THK	1
2	37120PC	PLATE 6620 SNATCH BLOCK	2
3	27812	SPACER 6620 SNATCH BLOCK UHMW	2
4	11666PC	SPACER 5520 SNATCH BLOCK	1
5	4975	CAP SCR 0.75-10X3.50 HHGR8 ZY	3
6	C6219	WASHER 0.75 SAE FLAT YELLOW GR8	6
7	C0538	NUT 0.75-10 HHGR8 NYLOC	3
8	9263	PIN .38X3.00 QUICK RELEASE	1
9	25831	HOOK 5 TON SWIVEL CROSBY 1028623	1
10	10972	CHAIN 0.105 (RM) 2607-21201	1
11	35264PC	WEIGHT ANTI 2 BLOCK	1
12	11938	SWITCH LIMIT A2B FURNAS 3SE3170	1
13	33749	SCREW #10-24X1.75 SHGR8 ZINC	4
14	D1711	CAP SCR #10-24X0.50 BTNHD SS	1
15	C4956	NUT #10-24 HH NYLOC SS	1
16	9610	WIRE ROPE 0.31 6X19 IWRC-XIP 90FT	1
17	C0949	CAP SCR 0.38-16X3.00 HHGR5	1
18	0347	NUT 0.38-16 HH NYLOC	1
19	33081PC	COVER ANTI 2 BLOCK	1
20	37850	CONNECTOR QUICK LINK 0.13	1
21	37601ZP	PIN 1.00X2.75 COTTER	1
22	0424	MACHY WASHER 1.00ID 10GA	2
23	37824	COTTER PIN .125X1.00	2

Basket Cable & Hook Assembly (Optional)- PN 43537



PN 43537

ITEM	PART	DESCRIPTION	QTY.
1	11934	SHEAVE 6620 6.50 DIA .31R/1.12 THK	1
2	37120PC	PLATE 6620 SNATCH BLOCK	2
3	27812	SPACER 6620 SNATCH BLOCK UHMW	2
4	11666PC	SPACER 5520 SNATCH BLOCK	1
5	4975	CAP SCR 0.75-10X3.50 HHGR8 ZY	3
6	C6219	WASHER 0.75 SAE FLAT YELLOW GR8	6
7	C0538	NUT 0.75-10 HHGR8 NYLOC	3
8	9263	PIN .38X3.00 QUICK RELEASE	1
9	25831	HOOK 5 TON SWIVEL CROSBY 1028623	1
10	9610	WIRE ROPE 0.31 6X19 IWRC-XIP 90FT	1
11	37601	PIN 1.00X2.75 COTTER	1
12	0424	MACHY WASHER 1.00ID 10GA	2
13	37824	COTTER PIN .125X1.00	2
14	43536PC	BRACKET SNATCH BLOCK CRADLEA2B 5520	2

Chapter 4 - Replacement Parts

PART#	DESCRIPTION	QTY
D1204	HYDRAULIC SWING MOTOR	1
25367	RELIEF VALVE	1
25368	SEAL KIT - RELIEF VALVE	1
25381	FLOW CONTROL VALVE	1
25369	SEAL KIT - FLOW CONTROL VALVE	1
25371	SOLENOID VALVE TAND G04571	1
25372	SOLENOID VALVE OPEN G04591	1
25373	SEAL KIT - SOLENOID VALVE	1
44532	COIL - 12VDC	2
13080	MANIFOLD ASM - MAIN CYLINDER	
9803	C-BALANCE VALVE	2
11991	PLUG - C-BALANCE	1
16154	MANIFOLD ASM - EXTENSION CYLINDER	1
10705	SEAL KIT - MAIN LIFT CYLINDER	1
35654	SEAL KIT - EXTENSION CYLINDER	1
44534	PRESSURE SWITCH	1
25890	HYD PRESSURE GUAGE	1
C2027	O'RING - # 4 FACE SEAL	4
C2028	O'RING - # 6 FACE SEAL	4
D1245	O'RING - # 4 SAE	4
D1246	O'RING - # 6 SAE	4
15173	TUBE ASM - MAIN CYLINDER	1
12158	TUBE ASM - EXTENSION CYLINDER	1
13575	TUBE ASM - EXTENSION CYLINDER	1
21810	BUSHING 1.50" X 0.75"	2
#0067	BUSHING 1.50" X "1.50	2
16067	BUSHING 1.50" X 1.00"	2
21536	WEAR PAD 1.19" X 1.50"	2
21537	WEAR PAD 0.25" X 1.50"	2
7403	PIN CAP .44 X 2.50 X .25	2
9142	PIN CAP .56 X 2.50" X 0.25" SS	2
C6353	WASHER 0.38 FLAT GR8	4
9843	CAP SCR. 0.38-16 X 0.75"	4
11545	SHEAVE	1
11934	SHEAVE	1
9610	WIRE ROPE	1
12824	HITCH PIN 1.00" X 4.50"	1
D1298	HITCH PIN 0.63" X 6.25"	1
9263	QUICK RELEASE PIN .38 X 3.00"	1
5753	LYNCH PIN	1
11938	LIMIT SWITCH (FLIP SHEAVE MODEL)	1
35105	LIMIT SWITCH (NON-FLIP SHEAVE)	1
19501	SAFETY LATCH FOR 5 TON SWIVEL HOOK	1
11544	CORD REEL	1
18468	12V SOLENOID (12volt hydraulic system)	1
17771	PUSH BUTTON (12volt hydraulic system)	1
35264PC	ANTI-2 BLOCK WEIGHT	1
27710	ANTI-2 BLOCK SPRING	1
35447	HANDLE ASM - RADIO REMOTE	1
16975	E-STOP - RADIO REMOTE	1
22600	TOGGLE SWITCH - RADIO REMOTE	1
35441	BATTERY TUBE HOLDER - RADIO REMOTE	1
34102	TRANSMITTER - RADIO REMOTE	1



Limited Warranty Statement

Stellar Industries, Inc. (Stellar) warrants products designed and manufactured by Stellar to be free from defects in material and workmanship under proper use and maintenance. Products must be installed and operated in accordance with Stellar's written instructions and capacities. This warranty shall cover the following:

Stellar Cranes, Stellar Hooklift Hoists, Stellar Cable Hoists, Stellar Container Carriers, Stellar Service Trucks, and Stellar X-Tra-Lift Systems:

Twelve (12) month warranty on parts from the date recorded by Stellar as the in-service date, not to extend beyond twenty-four (24) months from date of manufacture.

Twelve (12) month repair labor from the date recorded by Stellar as the in-service date, not to extend beyond twenty-four (24) month from date of manufacture, and

Thirty-six (36) month warranty on all Stellar Manufactured structural parts from the date recorded by Stellar as the in-service date, not to extend beyond forty-eight (48) months from date of manufacture.

Stellar Tarper Systems:

Twelve (12) month warranty on parts from the date recorded by Stellar as the in-service date, not to extend beyond twenty-four (24) months from date of manufacture and

Three (3) month repair labor from the date recorded by Stellar as the in-service date, not to extend beyond fifteen (15) month from date of manufacture.

The in-service date will be derived from the completed warranty registration card. In the event a warranty registration card is not received by Stellar, the factory ship date will be used.

Stellar's obligation under this warranty is limited to, and the sole remedy for any such defect shall be, the repair and/or replacement (at Stellar's option) of the unaltered part and/or component in question. Stellar after-sales service personnel must be notified by telephone, fax, or letter of any warranty-applicable damage within fourteen (14) days of its occurrence. If at all possible, Stellar will ship the replacement part within 24-hours of notification by the most economical, yet expedient, means possible. Expedited freight delivery will be at the expense of the owner.

Warranty claims must be submitted and shall be processed in accordance with Stellar's established warranty claim procedure. Stellar after-sales service personnel must be contacted prior to any warranty claim. A return materials authorization (RMA) account number must be issued to the claiming party prior to the return of any warranty parts. Parts returned without prior authorization will not be recognized for warranty consideration. All damaged parts must be returned to Stellar freight prepaid; freight collect returns will be refused. Freight reimbursement of returned parts will be considered as part of the warranty claim.

Warranty service will be performed by any Stellar new equipment distributor, or by any Stellar-recognized service center authorized to service the type of product involved, or by the Stellar factory in the event of a direct sale. At the time of requesting warranty service, the owner must present evidence of date of delivery of the product. The owner shall be obligated to pay for any overtime labor requested of the servicing company by the owner, any field service call charges, and any towing and/or transportation charges associated with moving the equipment to the designated repair/service provider.

All obligations of Stellar and its authorized dealers and service providers shall be voided if someone other than an authorized Stellar dealer provides other than routine maintenance service without prior written approval from Stellar. In the case repair work is performed on a Stellar-manufactured product, original Stellar parts must be used to keep the warranty in force. The warranty may also be voided if the product is modified or altered in any way not approved, in writing, by Stellar.

The owner/operator is responsible for furnishing proof of the date of original purchase of the Stellar product in question. Warranty registration is the ultimate responsibility of the owner and may be accomplished by the completion and return of the Stellar product registration card provided with the product. If the owner is not sure of registration, he is encouraged to contact Stellar at the address below to confirm registration of the product in question. This warranty covers only defective material and workmanship. It does not cover depreciation or damage caused by normal wear and tear, accident, mishap, untrained operators, or improper or unintended use. The owner has the obligation of performing routine care and maintenance duties as stated in Stellar's written instructions, recommendations, and specifications. Any damage resulting from owner/operator failure to perform such duties shall void the coverage of this warranty. The owner will pay the cost of labor and supplies associated with routine maintenance.

The only remedies the owner has in connection with the breach or performance of any warranty on the Stellar product specified are those set above. In no event will Stellar, the Stellar distributor/dealer, or any company affiliated with Stellar be liable for business interruptions, costs of delay, or for any special, indirect, incidental, or consequential costs or damages. Such costs may include, but are not limited to, loss of time, loss of revenue, loss of use, wages, salaries, commissions, lodging, meals, towing, hydraulic fluid, or any other incidental cost.

All products purchased by Stellar from outside vendors shall be covered by the warranty offered by that respective manufacturer only. Stellar does not participate in, or obligate itself to, any such warranty.

Stellar reserves the right to make changes in design or improvement upon its products without imposing upon itself the same upon its products theretofore manufactured.

This warranty will apply to all Stellar Cranes, Stellar Hooklift Hoists, Stellar Cable Hoists, Stellar Container Carriers, Stellar Service Trucks, Stellar X-Tra-Lift Systems, and Stellar Tarper Systems shipped from Stellar's factory after January 1st, 2010. The warranty is for the use of the original owner only and is not transferable without prior written permission from Stellar.

THIS WARRANTY IS EXPRESSLY IN LIEU OF ANY OTHER WARRANTIES, EXPRESS OR IMPLIED, INCLUDING ANY WARRANTY OF MERCHANTABILITY OR FITNESS FOR A PARTICULAR PURPOSE. REMEDIES UNDER THIS WARRANTY ARE LIMITED TO THE PROVISION OF MATERIAL AND SERVICES, AS SPECIFIED HEREIN. STELLAR INDUSTRIES, INC. IS NOT RESPONSIBLE FOR INCIDENTAL OR CONSEQUENTIAL DAMAGES.

Revision Date: February 2010

Document Number: 37040