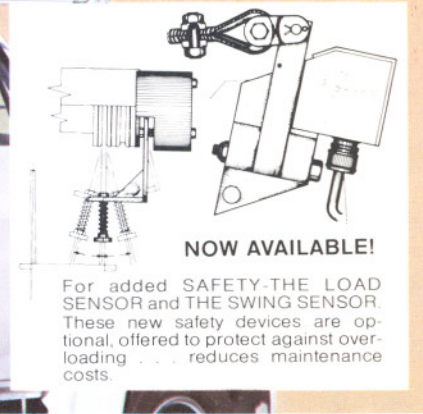
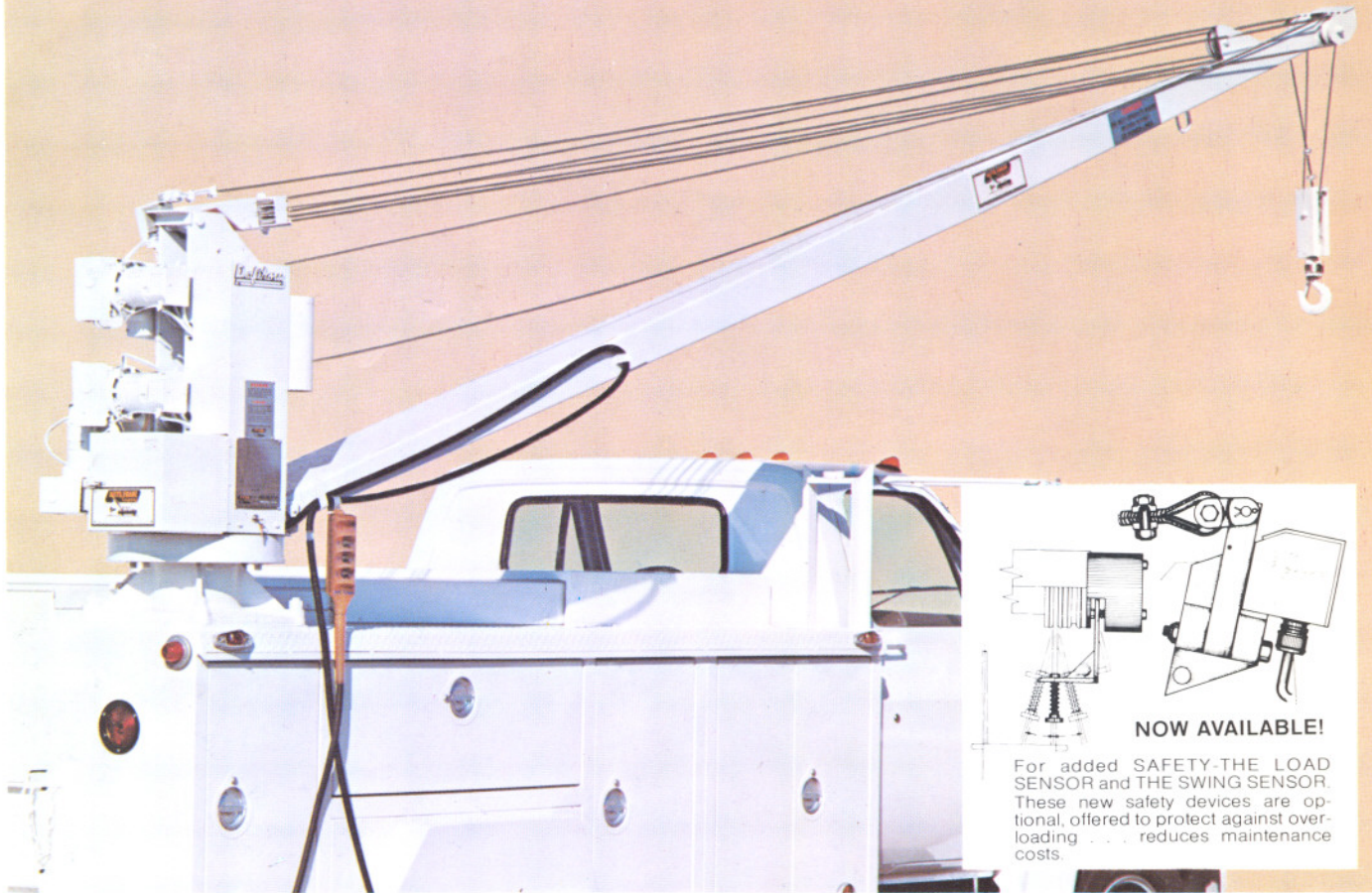


AUTO CRANE

DRAFTHORSE
MODEL RBC-5 5000 lb. CAPACITY
12 or 24-VOLT D.C. BATTERY
or 110-VOLT A.C. POWERED

6,000 lb. CAPACITY
WITH LOAD SENSOR



NEW! NOW AVAILABLE . . . For Added SAFETY — THE LOAD SENSOR and THE SWING SENSOR

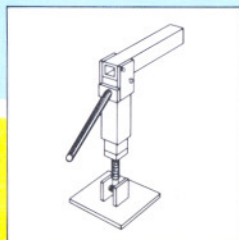
ELECTRIC POWERED DRAFTHORSE, the Big Brother to the MIGHTY WORKHORSE, is RUGGED, yet light weight, FUNCTIONAL and FAST . . . handles loads up to 6,000 lbs. easily and safely with little effort. Finger tip PENDANT CONTROL allows operator to precision spot any load, from any position, either through POWER HOISTING, POWER BOOMING or POWER ROTATING by the flick of a switch. A proven versatile, dependable, cost cutting and safe machine.

THE DRAFTHORSE also features AUTO CRANE'S exclusive HELICON® gear train actuators and air-cooled reversible electric motors. All actuators are equipped with AUTO CRANE'S load holding brake. Extra heavy-duty base supports an extra heavy-duty quill mounted on tapered roller bearings. Featured on the DRAFTHORSE is AUTO CRANE'S cushion mounted pedestal assembly which minimizes shock loading of gears in the turner mechanism.

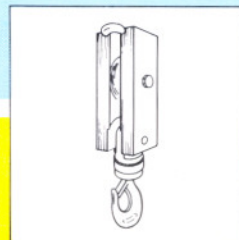
SPECIFY AUTO CRANE and get THE QUALITY BONUS



Model "SX" Heavy Duty Safety Traveling Block



Heavy Duty Quick Detachable Jackleg



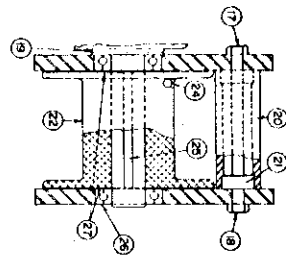
Swivel Block

AUTO CRANE
Company

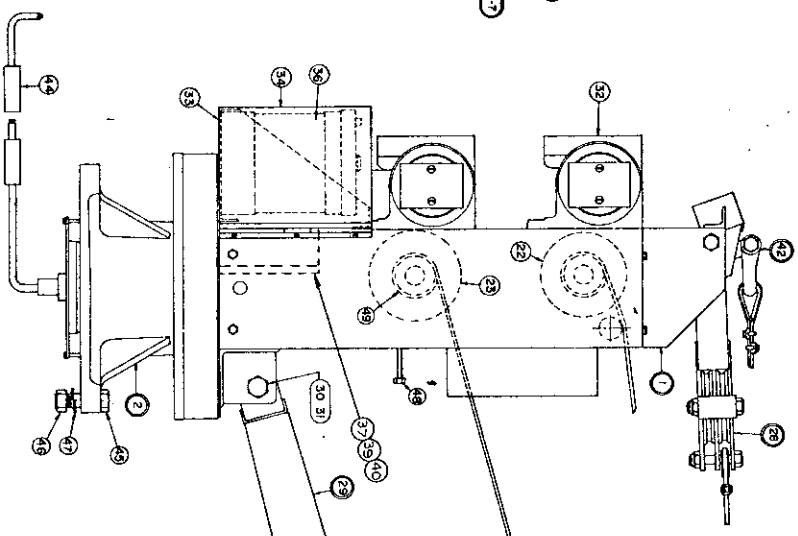
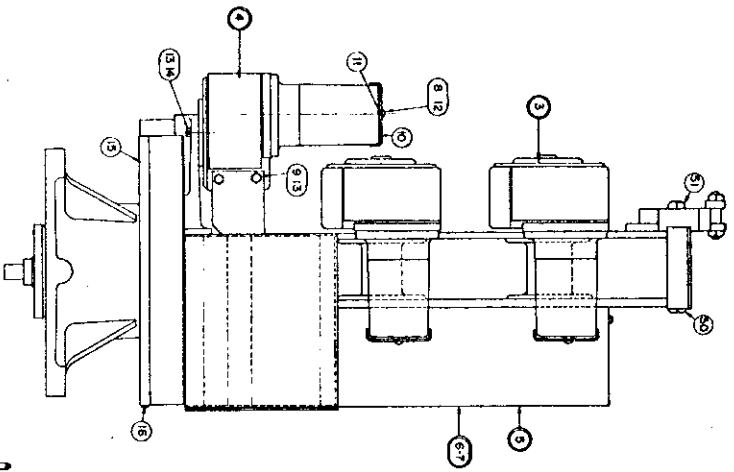


9260 Broken Arrow Expressway
 P.O. Box 45548
 Tulsa, Oklahoma 74145
 Phone 918-627-9475

GIVING INDUSTRY A LIFT—THE WORLD OVER



Note:
 ADJUST AS READ AT ASSEMBLY
 TO MAKE SURE THERE IS NO
 GAP BETWEEN DRAW AND SIDE
 PLATE.



ITEM	QUAN	PART NO.	DESCRIPTION	ITEM	QUAN	PART NO.	DESCRIPTION
1	1	RBC-2334	PEDESTAL (R.F.F)	24	2	1/4-20 X 3/4 CUP POINT SET SCR	
2	1	RBC-3045	BASE ASSEMBLY	25	2	1/4-20 X 1/4 X 1/4 KEY STOCK	
3	2	B-3000-4	ACTUATOR ASSEMBLY	26	4	B-4005	BEARINGS
4	1	B-3003-4	TURNER ACTUATOR ASSEMBLY	27	4	SP ROD END RETAINING RING	
5	1	RBC-3060	GLAND	28	1	RBC-2155	CROSS SHEET ASSEMBLY
6	1	4781	PAWS ASSEMBLY (TUBULAR)	29	1	RBC-2156	BROW ROLLERS
7	1	4776	WINDING ASSEMBLY (TUBULAR)	30	2	RBC-2157	WHEEL END SELF LOCK NUT
8	2	4775	WINDING ASSEMBLY (WOOD)	31	3	B-3002-4	GLAND (SEE NOTE 7)
9	2	4774	WINDING ASSEMBLY (METAL)	32	1	B-3003-4	BATTERY (SEE NOTE 8)
10	3	4773	WINDING ASSEMBLY (STEEL)	33	1	RBC-3005	GLAND BATTERY (SEE NOTE 8)
11	6	4772	WINDING ASSEMBLY (ALUMINUM)	34	1	RBC-3006	GLAND BATTERY (SEE NOTE 8)
12	6	4771	WINDING ASSEMBLY (COPPER)	35	2	P VOLT BATTERY	
13	2	4770	WINDING ASSEMBLY (ZINC)	36	1	5521	SE ROLLER
14	2	4769	WINDING ASSEMBLY (SILVER)	37	1	6774	SE ROLLER
15	1	4768	WINDING ASSEMBLY (GOLD)	38	2	6773	SE ROLLER
16	1	4767	WINDING ASSEMBLY (SILVER)	39	3	6772	SE ROLLER
17	1	4766	WINDING ASSEMBLY (SILVER)	40	3	6771	SE ROLLER
18	1	4765	WINDING ASSEMBLY (SILVER)	41	1	6770	SE ROLLER
19	2	4764	WINDING ASSEMBLY (SILVER)	42	1	6769	SE ROLLER
20	2	4763	WINDING ASSEMBLY (SILVER)	43	1	6768	SE ROLLER
21	2	4762	WINDING ASSEMBLY (SILVER)	44	1	6767	SE ROLLER
22	1	4761	WINDING ASSEMBLY (SILVER)	45	1	6766	SE ROLLER
23	1	4760	WINDING ASSEMBLY (SILVER)	46	1	6765	SE ROLLER

NOTE: 1. FOR ITEMS 28 AND 29 ON 17' AND 20' FT. BOOMS
 SEE DRAWING NO RBC-2336-R R

AUTO CRANE CO.
 GENERAL ASSEMBLY DEPT. 1224 VINC
 1224 VINCENNES AVE. VINCENNES, IN.
 1937
 1937
 1937

4

3

2

1

REVISION				
ZONE	LTR	DESCRIPTION	DATE	APPROVED

D

D

C

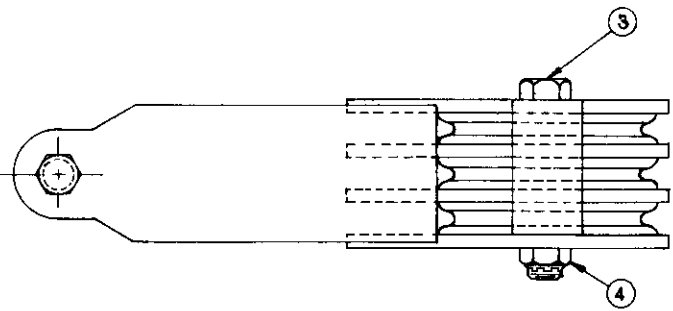
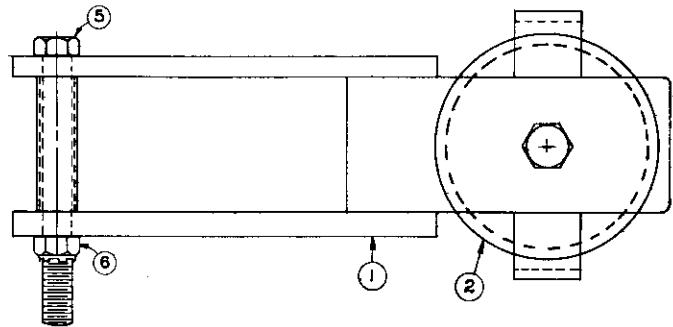
C

B

B

A

A



018300	6	1	---	5/8" X18 NF LOCK NUT (REF.)
013300	5	1	---	5/8" X18 NF X 6 GD 5 CAPSCREW (REF.)
018300	4	1	---	5/8" X18 NF LOCK NUT
013000	3	1	---	5/8" X18 NF X 4 GD 5 CAPSCREW
227401	2	3	RBC2274-A	SHEAVE ASSEMBLY
233705	1	1	RBC2337-RR	CROSS SHEAVE FRAME
NEW PART NO.	ITEM	QUAN.	PART NO.	DESCRIPTION

CONTRACT NO. _____
 AUTO CRANE CO.
 DRAWING NO. _____ DATE _____
 APPROVED _____
 CHECKED _____
 DRAWN CATES 3-27-72

AUTO CRANE COMPANY
 9260 BROKEN ARROW EXPWY., TULSA, OKLA. 74145
TRIPLE CROSS SHEAVE ASSEMBLY

SIZE	CODE IDENT. NO.	DRAWING NO.
C		233501
SCALE	NONE	WEIGHT
		SHEET OF

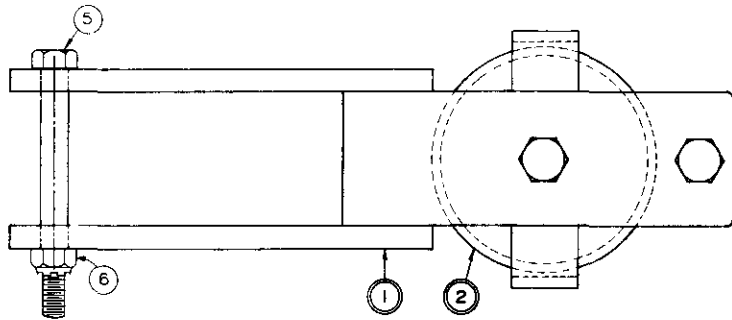
4

3

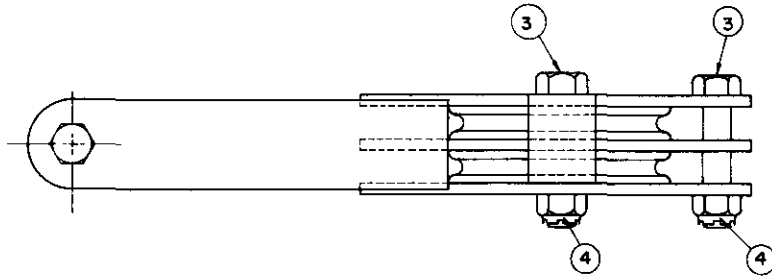
2

1

REVISION				
ZONE	LTR	DESCRIPTION	DATE	APPROVED



NEW PART NO.	ITEM	QUAN	PART NO.	DESCRIPTION
233700	1	1	RBC-2337	FRAME- CROSS SHEAVE
227401	2	2	RBC-2274-A	SHEAVE ASSEMBLY
012701	3	2	---	5/8-18 NF X 3 GD.5 CAPSCREW
018300	4	2	---	5/8-18 NF LOCK NUT
013300	5	1	---	5/8-18 N.F. X 6 GD 5 CAPSCREW (REF.)
018300	6	1	---	5/8-18 NF LOCK NUT (REF.)



CONTRACT NO. _____		AUTO CRANE COMPANY	
AUTO CRANE CO.		9260 BROKEN ARROW EXPWY., TULSA, OKLA. 74145	
DRAWING NO. _____	DATE _____	DOUBLE CROSS SHEAVE ASSEMBLY	
APPROVED _____	_____		
CHECKED _____	_____		
DRAWN DMILLER	12-12-68	SIZE C	CODE IDENT. NO. _____
			DRAWING NO. 233500
SCALE HALF	WEIGHT _____	SHEET _____	OF _____

11/14 RBC 15-3

RBC-2535

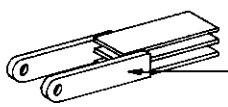
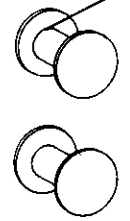
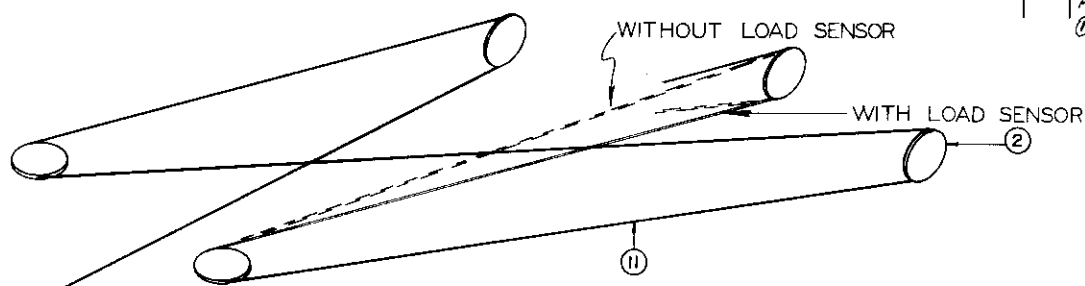
4

3

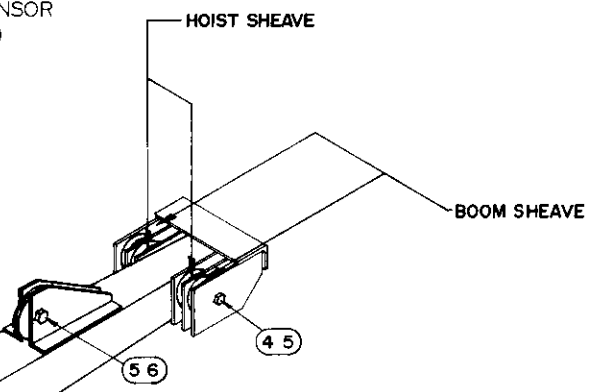
2

1

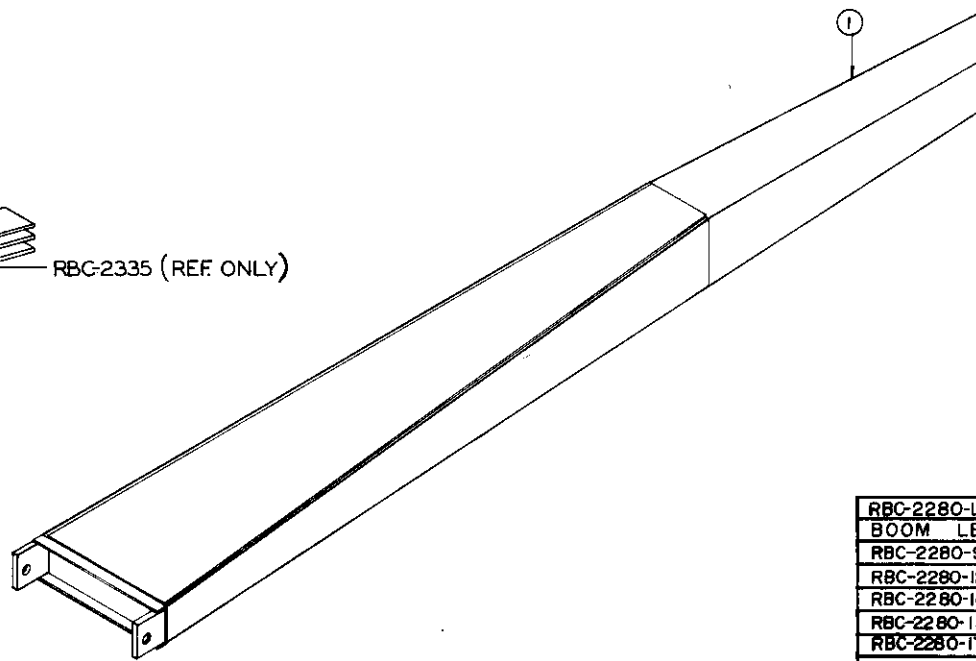
ZONE		LTR		REVISION	DATE	APPROVED
		A		REDRAWN & REVISED	3-26-70	
		B		SEE CHANGE NOTICE	4-6-72	



RBC-2335 (REF. ONLY)

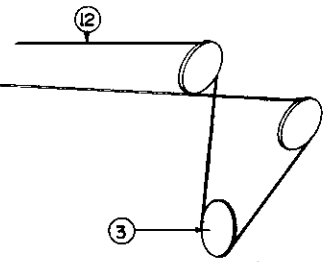
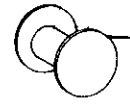
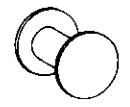


ITEM	QUAN	PART NO.	DESCRIPTION
1	1	RBC-2280-L	BOOM
2	5	OX-2009-A	SHEAVE
3	1	R-1002	SX BLOCK
4	1		5/8-11 MACHINE BOLT 9" LONG
5	2		5/8-11 LOCKNUT
6	1		5/8-11 X2 HEX CAPSCREW
7	2		5/16 WIRE ROPE THIMBLE
8	2		5/16 WIRE ROPE CLAMP
9			
10	2		1/4 WIRE ROPE CLAMP
11	1	RBC-2230-L	BOOM CABLE (SEE CHART)
12	1	RBC-2368-L	HOIST CABLE (SEE CHART)



FOR 3 LINE STRING UP DEAD LINE TO BLOCK

FOR 2 LINE STRING UP DEAD LINE TO CROSS SHEAVE



RBC-2280-L BOOM	BOOM CABLE	HOIST CABLE
BOOM LENGTH	LENGTH	LENGTH
RBC-2280-9	RBC-2230-62	RBC-2368-75
RBC-2280-12	RBC-2230-80	RBC-2368-75
RBC-2280-14	RBC-2230-92	RBC-2368-75
RBC-2280-15	RBC-2230-98	RBC-2368-80
RBC-2280-17	RBC-2230-110	RBC-2368-85

NOTE: FOR 20 BOOM SEE DRAWING RBC2336-R.R.

CONTRACT NO.	
AUTO CRANE CO.	
DRAWING NO.	DATE
APPROVED	
CHECKED	
DRAWN	DMILLER 12-17-68

AUTO CRANE COMPANY
 9260 BROKEN ARROW EXPWY., TULSA, OKLA. 74145

BOOM ASSEMBLY RBC-5

SIZE	CODE IDENT. NO.	DRAWING NO.
C		233600
SCALE	NONE	WEIGHT
		SHEET OF

N/A - RBC-102B-1

4

3

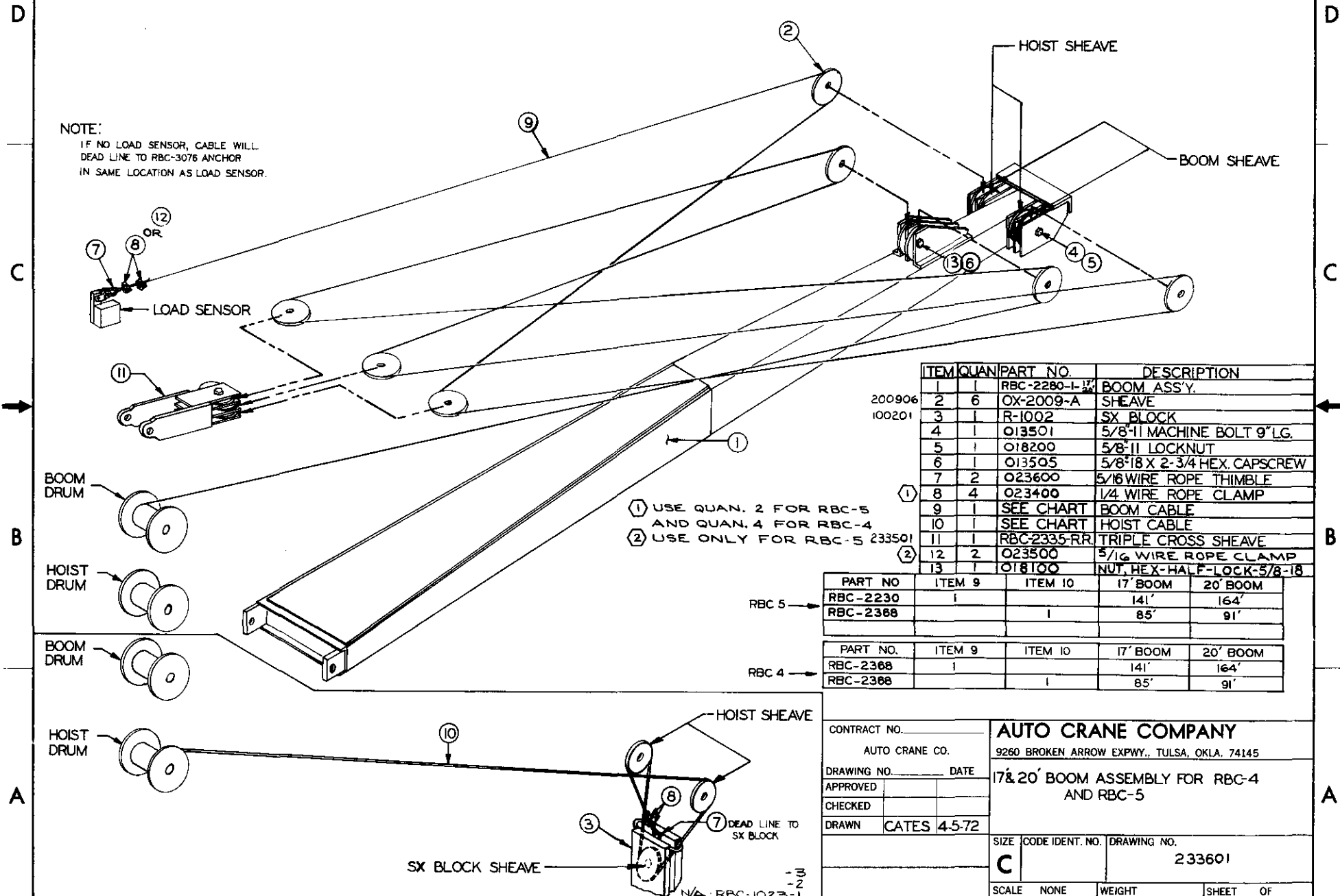
2

1

REVISION				
ZONE	LTR	DESCRIPTION	DATE	APPROVED
	A	ITEM-9 (20 FT. BOOM) WAS 152 FT. LONG	2-4-75	
	B	SEE ECN	3-28-77	AUC

NOTE:

IF NO LOAD SENSOR, CABLE WILL DEAD LINE TO RBC-3076 ANCHOR IN SAME LOCATION AS LOAD SENSOR.



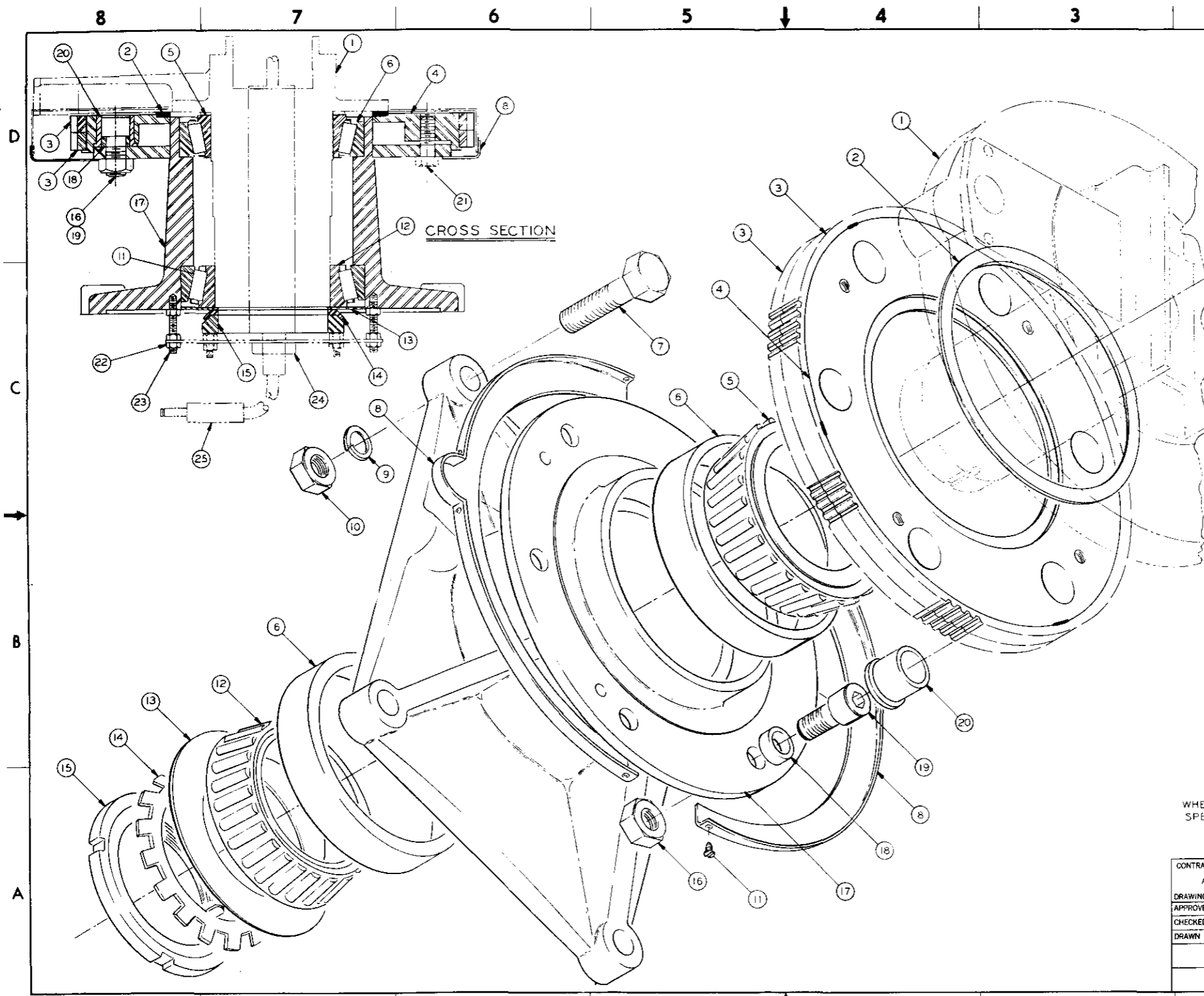
ITEM	QUAN	PART NO.	DESCRIPTION
1	1	RBC-2280-1-W	BOOM ASS'Y.
2	6	OX-2009-A	SHEAVE
3	1	R-1002	SX BLOCK
4	1	O13501	5/8"-11 MACHINE BOLT 9" LG.
5	1	O18200	5/8"-11 LOCKNUT
6	1	O13505	5/8"-18 X 2-3/4 HEX. CAPSCREW
7	2	O23600	5/16 WIRE ROPE THIMBLE
8	4	O23400	1/4 WIRE ROPE CLAMP
9	1	SEE CHART	BOOM CABLE
10	1	SEE CHART	HOIST CABLE
11	1	RBC-2335-RR	TRIPLE CROSS SHEAVE
12	2	O23500	5/16 WIRE ROPE CLAMP
13	1	O18100	NUT, HEX-HALF-LOCK-5/8-18

- ① USE QUAN. 2 FOR RBC-5 AND QUAN. 4 FOR RBC-4
- ② USE ONLY FOR RBC-5 233501

PART NO	ITEM 9	ITEM 10	17' BOOM	20' BOOM
RBC-2230	1		141'	164'
RBC-2368		1	85'	91'

PART NO.	ITEM 9	ITEM 10	17' BOOM	20' BOOM
RBC-2368	1		141'	164'
RBC-2368		1	85'	91'

CONTRACT NO. _____		AUTO CRANE COMPANY	
AUTO CRANE CO.		9260 BROKEN ARROW EXPWY., TULSA, OKLA. 74145	
DRAWING NO. _____ DATE _____		17 & 20' BOOM ASSEMBLY FOR RBC-4 AND RBC-5	
APPROVED			
CHECKED			
DRAWN	CATES 4-5-72		
SIZE		CODE IDENT. NO.	DRAWING NO.
C			233601
SCALE	NONE	WEIGHT	SHEET OF



ITEM	QUAN	PART NO.	DESCRIPTION
1	—		PEDESTAL ASSY(REF)
2	1	210801	SYNTHANE RING
3	2	301300	GEAR
4	1	234100	GEAR PLATE
5	1	236700	CONE, UPPER
6	2	238500	CUP
7	4	015100	7/8-14NF X 4 GD5 CAPSCREW
8	1	302203	GEAR GUARD, LWR
9	4	022200	7/8 LOCKWASHER
10	4	018900	7/8-14NF HEX NUT
11	7	004800	#10 X 3/8 SELF TAPPING RH.SCR.
12	1	236600	CONE LWR
13	1	302400	SHIELD
14	1	308202	LOCKWASHER
15	1	307702	NUT
16	6	019100	7/8-9NC SELFLOCK HALF NUT
17	1	235700	BASE
18	6	234700	SPACER BUSHING
19	6	234600	BASE PIN
20	6	234300	BUSHING
21	4	013508	5/8-11NC X1-1/2 GD 5 CAPSCR (REF)
22	6	016600	5/16-24 NF HEX NUT
23	2	007810	5/16-24NF X 2-1/2 ALL THREAD STUD
24	—	SEE ASSY	SWIVEL CONNECTOR
25	—		MALE PLUG (REF)

WHEN ORDERING PARTS BE SURE TO SPECIFY MODEL AND SERIAL NUMBER

CONTRACT NO. _____		AUTO CRANE COMPANY	
AUTO CRANE CO.		9260 BROKEN ARROW EXPWY., TULSA, OKLA. 74145	
DRAWING NO. _____	DATE _____	BASE ASSEMBLY RBC-5	
APPROVED _____	CHECKED _____		
DRAWN JBH	7-1-70		
SIZE D	CODE IDENT. NO.	DRAWING NO. M 115	
SCALE _____	WEIGHT _____	SHEET OF _____	

4

3

2

1

D

C

B

A

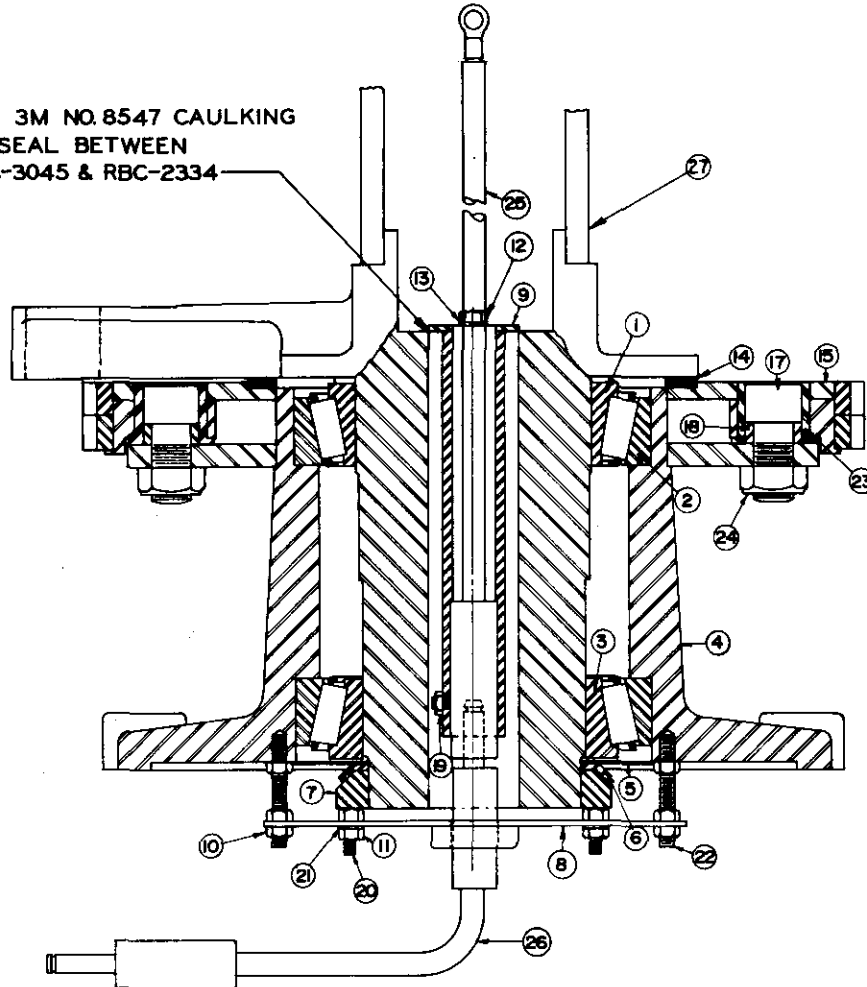
D

C

B

A

NOTE:
 USE 3M NO. 8547 CAULKING
 TO SEAL BETWEEN
 RBC-3045 & RBC-2334



ZONE	LTR	DATE	APPROVED
A	SEE CHANGE NOTICE	1-29-70	
B	COMBINED ITEMS (1) (2) & MAKE RBC-2341-1. ALSO ADDED PEDestal ASSY ITEM (7)	3-2-70	
C	ADDED (REF) TO ITEMS 15, 16, 17, 18, 23 & 24	7/20/70	
D	SEE CHANGE NOTICE (ITEM #26)	9/10/70	
E	SEE E.C.N.	RICK.	
F	SEE E.C.N.	RICK. 8-11-76	AWC

NEW PART NO.	ITEM	QUAN	PART NO.	DESCRIPTION
238700	1	1	238700	CONE UPPER TIMKEN NO. 67390
238500	2	2	238500	CUP (REF) TIMKEN NO. 67322
238800	3	1	238800	CONE LOWER TIMKEN NO. 67388
235700	4	1	235700	BASE
302402	5	1	302402	SHIELD
308202	6	1	308202	LOCKWASHER
307702	7	1	307702	NUT
304400	8	1	RBC-3044	BRACKET TWECO SWIVEL LOWER
304500	9	1	RBC-3045	BRACKET TWECO SWIVEL UPPER
016600	10	6		5/16-24 NF HEX NUT
015900	11	2		1/4-20 NC HEX NUT
007808	12	2		5/16-24 NF X 1/2 CAPSCREW
020600	13	2		5/16 LOCKWASHER
210801	14	1	RBC-2108-1	SYNTHANE RING
234100	15	1	RBC-2341	GEAR PLATE
301300	16	2	RBC-3013	GEAR } RBC-2341-1 GEAR PLATE ASSY (REF)
234600	17	6	RBC-2346	BASE PIN (REF)
234700	18	6	RBC-2347	SPACER BUSHING (REF)
002900	19	1		1/4-20 NC X 3/8 SOC. SET SCREW
006002	20	2		1/4-20 NC X 3/4 BRASS CAPSCREW
020200	21	2		1/4 CAD PLATED WASHER-SPLIT-LOCK
007810	22	2	007810	5/16-24 NF ALL THREAD STUD X 2 1/2 LG
234300	23	6	RBC-2343	URETHANE SPACER (REF)
019100	24	6		7/8-9 NC SELFLOCK HALF NUT (REF)
603317	25	1	6033-17	SWIVEL CONNECTOR
602713	26	1	6027-13	SWIVEL CONNECTOR
233400	27	1	RBC-2334	PEDESTAL ASSEMBLY

CONTRACT NO. _____		AUTO CRANE COMPANY	
AUTO CRANE CO.		9260 BROKEN ARROW EXPWY., TULSA, OKLA. 74145	
DRAWING NO. _____ DATE _____		BASE ASSEMBLY RBC5 12/24 & 24 VOLT	
APPROVED _____			
CHECKED _____			
DRAWN DMILLER 2-26-69		SIZE C	CODE IDENT. NO. 304601
		SCALE HALF	WEIGHT _____ SHEET _____ OF _____

182000 THRU 182059
 N.A. 183000 THRU 183059

RBC-3046-1

8

7

6

5

4

3

2

1

D

C

B

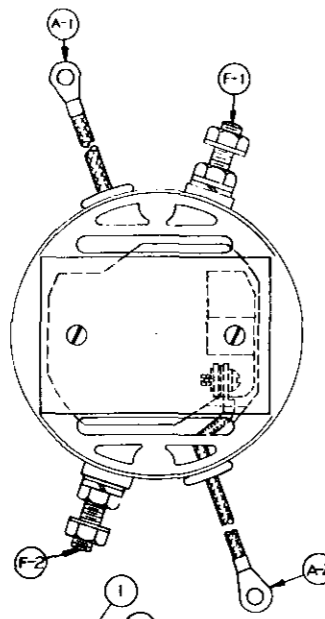
A

D

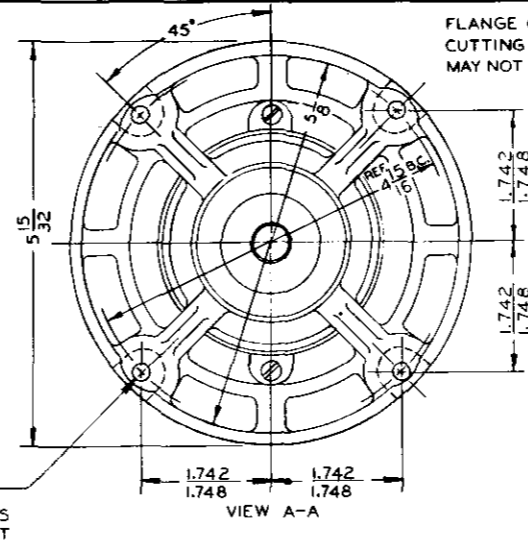
C

B

A

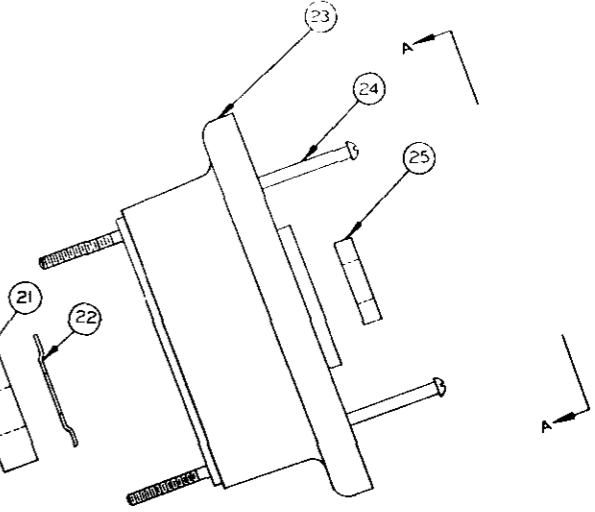


A-1 IS CONNECTED TO GROUND.
 FOR CW ROTATION CONNECT A-2
 TO F-2 AND F-1 TO POWER POLE.
 FOR CCW ROTATION CONNECT A-2
 TO F-1 AND F-2 TO POWER POLE.

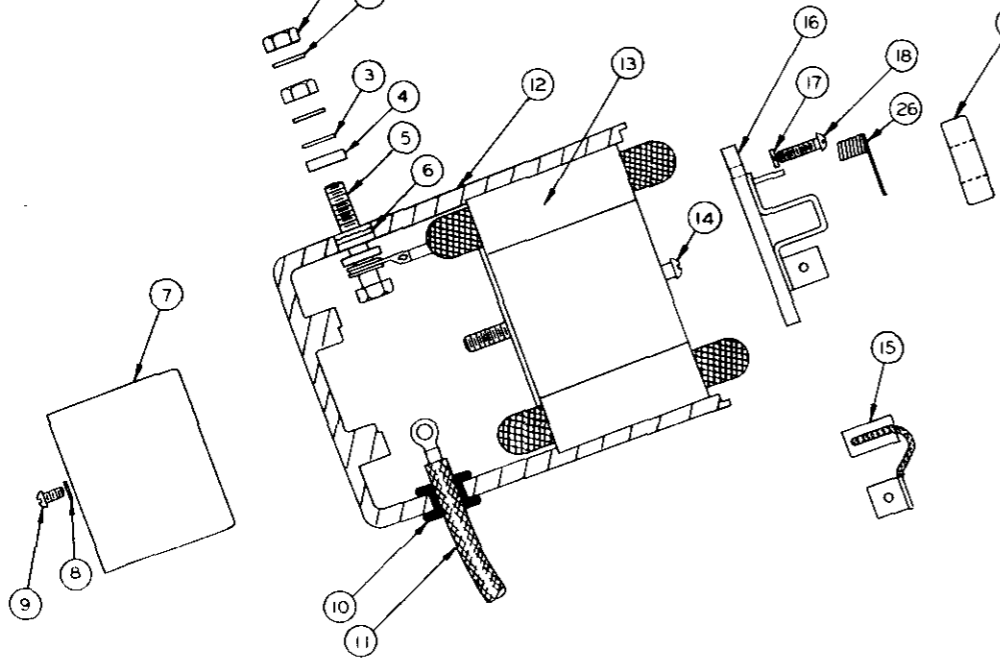


17
64
DIA.
4-HOLES
90° APART

VIEW A-A



PINION GEAR PER
 ILLINOIS TOOL WORKS
 #D-51-3248



QTY	A/R	28	DESCRIPTION	SHIM
1	1	27	B-3001-27	DECAL, MOTOR
2	2	26	B-3001-26	SPRING, MOTOR
1	1	25	B-3001-25	SEAL, MOTOR
2	2	24	B-3001-24-C	SCREW, MOTOR
1	1	23	B-3001-23	HEAD, MOTOR
1	1	22	B-3001-22	SPRING, MOTOR
1	1	21	B-3001-21	BEARING
1	1	20	B-3001-20	ARMATURE-12V
1	1	19	B-3001-19	BEARING
2	2	18	B-3001-18	SCREW
2	2	17	B-3001-17	WASHER, LOCK
1	1	16	B-3001-16	BRACKET, MOTOR
2	2	15	B-3091	BRUSH, MOTOR
2	2	14	B-3001-14	SCREW
1	1	13	B-3001-13	STATOR-12V
1	1	12	B-3001-12	HOUSING, MOTOR
2	2	11	B-3001-11	LEAD, MOTOR
2	2	10	B-3001-10	GROMMET, INSULATOR
2	2	9	B-3001-9	SCREW
2	2	8	B-3001-8	WASHER, LOCK
1	1	7	B-3001-7	COVER, END-MOTOR
6	6	6	B-3001-6	INSULATOR, MOTOR
2	2	5	B-3001-5	SCREW, HEX-HD
4	4	4	B-3001-4	INSULATOR, MOTOR
4	4	3	B-3001-3	WASHER, FLAT
6	6	2	B-3001-2	WASHER, LOCK
4	4	1	B-3001-1	NUT

NEW PART NO.	QUAN	ITEM	DATE	PART NO.	DESCRIPTION
LIST OF MATERIAL					
TOLERANCES UNLESS OTHERWISE SHOWN:			DATE	7-19-77	
ANGLES	1/2°		DESIGNED BY	DATE	
FRACTIONAL	1/32		DATE	DATE	
2 PLACE DECIMAL	.010		DATE	DATE	
3 PLACE DECIMAL	.005		DATE	DATE	
NORMALITY (U)	.002/IN		DATE	DATE	
PARALLELISM (D)	.002/IN		DATE	DATE	
REMOVE ALL BURRS AND SHARP EDGES. DO NOT SCALE THIS DRAWING.					
NEXT ASSY.	USED ON				
APPLICATION	WEIGHT				

AUTO CRANE COMPANY
 2890 BROKEN ARROW EXPWY., TULSA, OKLA. 74145
 TITLE
MOTOR-24V
 MATERIAL
 SIZE **D** CODE IDENT. DRAWING NO. 300105
 SCALE FULL REV. SHEET 2 OF 3

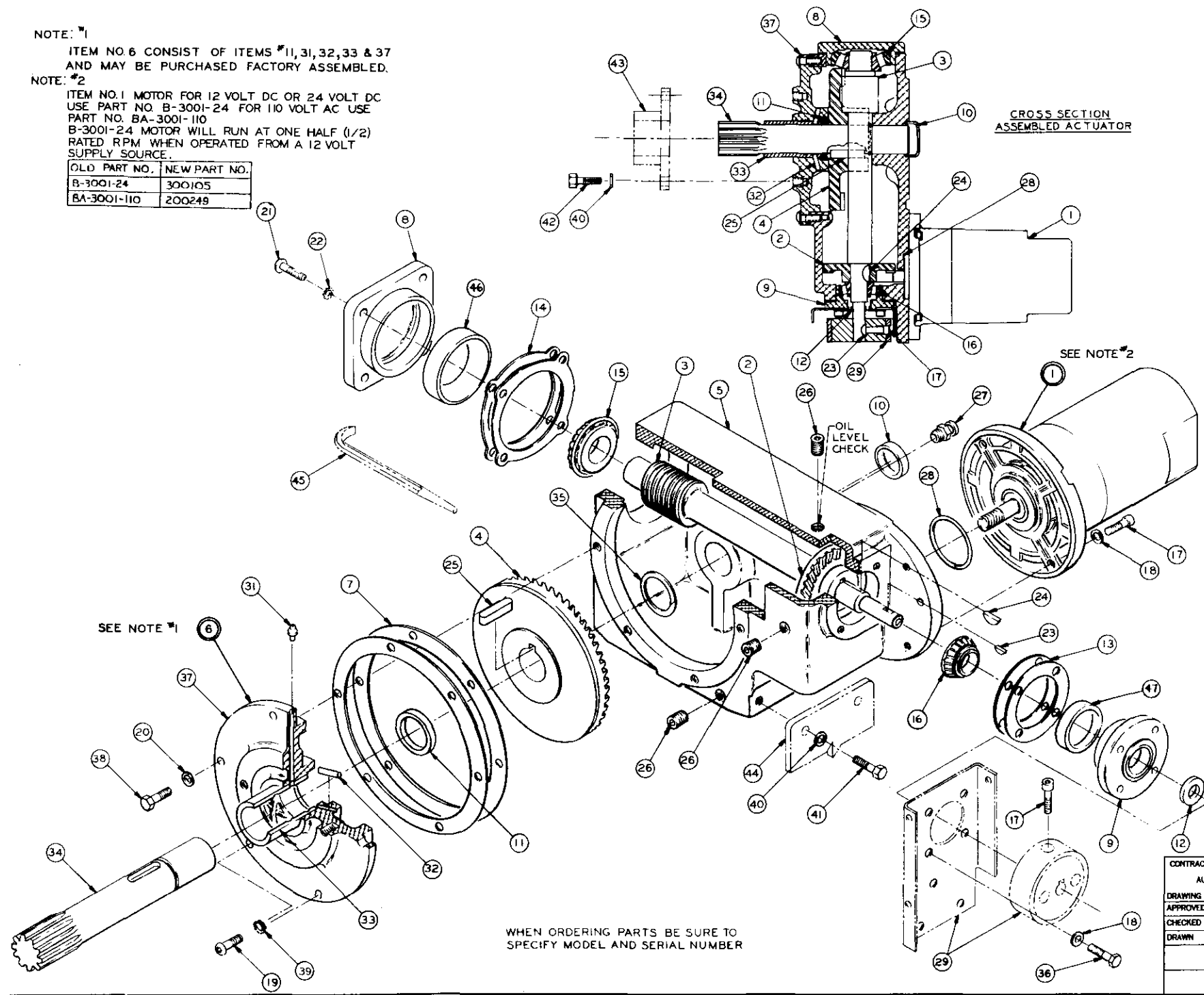
NOTE: #1

ITEM NO.6 CONSIST OF ITEMS #11,31,32,33 & 37 AND MAY BE PURCHASED FACTORY ASSEMBLED.

NOTE: #2

ITEM NO.1 MOTOR FOR 12 VOLT DC OR 24 VOLT DC USE PART NO. B-3001-24 FOR 110 VOLT AC USE PART NO. BA-3001-110 B-3001-24 MOTOR WILL RUN AT ONE HALF (1/2) RATED RPM WHEN OPERATED FROM A 12 VOLT SUPPLY SOURCE.

OLD PART NO.	NEW PART NO.
B-3001-24	300105
BA-3001-110	200249



CROSS SECTION ASSEMBLED ACTUATOR

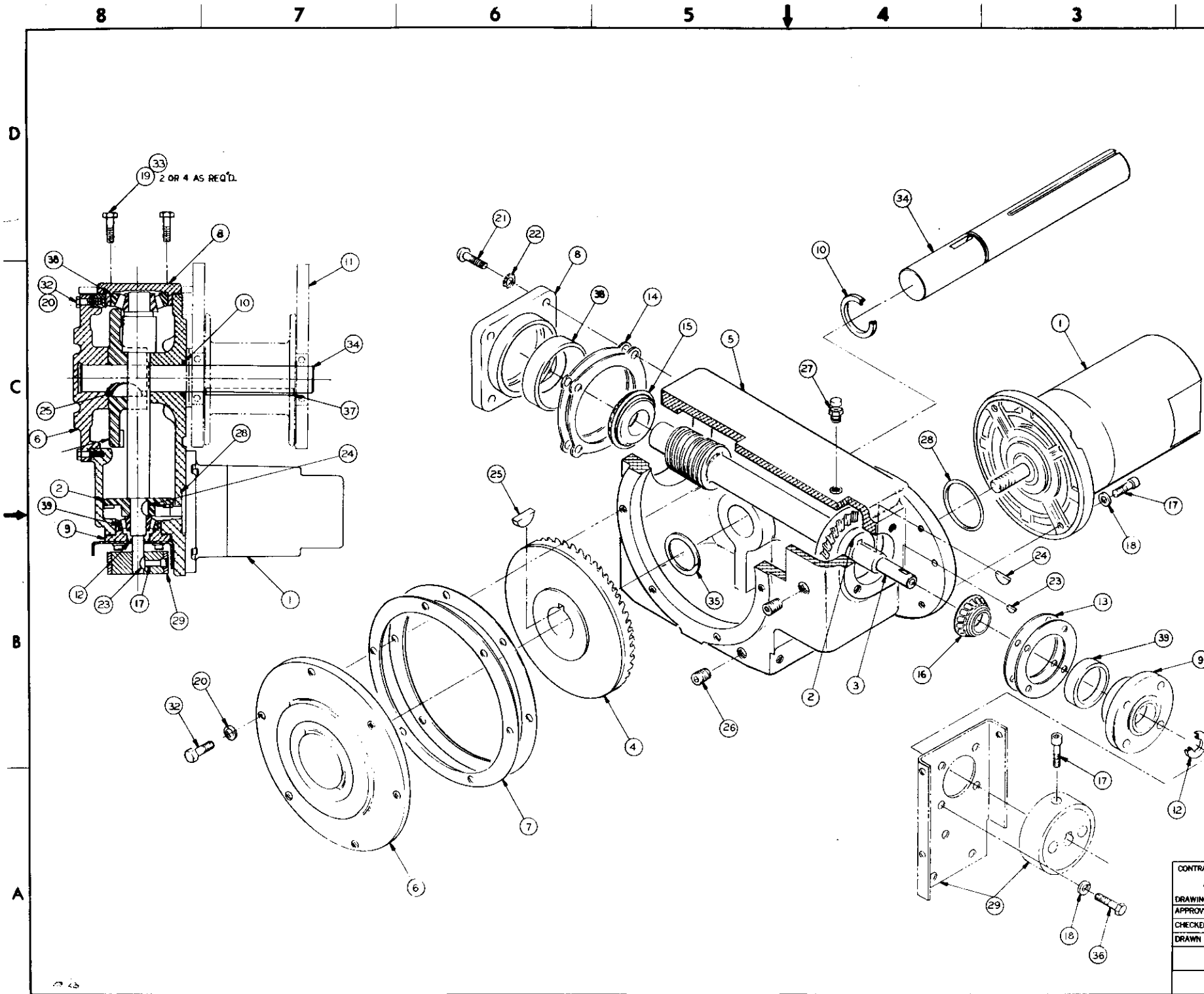
SEE NOTE #2

SEE NOTE #1

WHEN ORDERING PARTS BE SURE TO SPECIFY MODEL AND SERIAL NUMBER

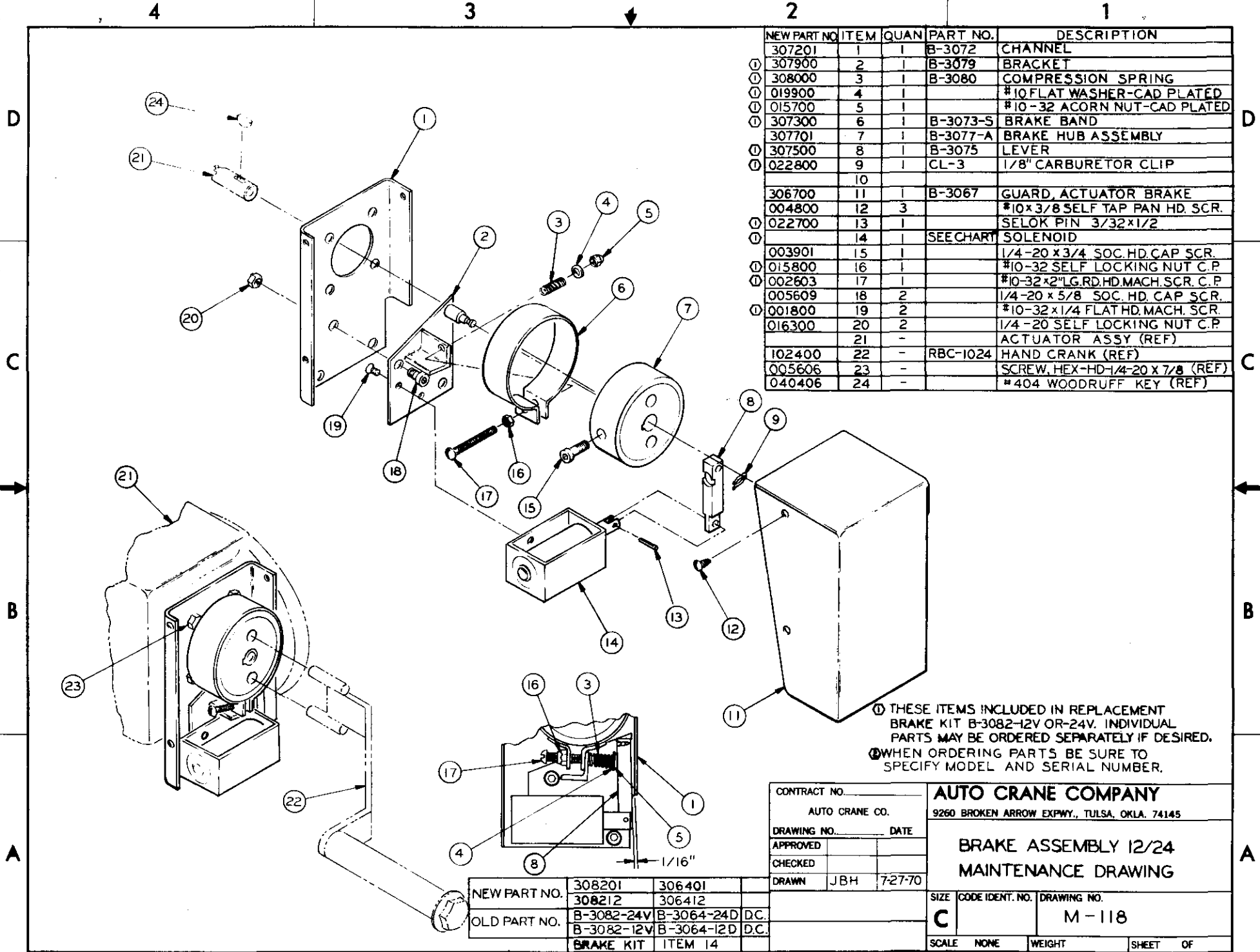
ITEM	QUAN	PART NO	DESCRIPTION
1	1	SEE NOTE #2	R AND M MOTORS
2	1	300205	PRIMARY GEAR
3	1	315000	SHAFT
4	1	315100	SECONDARY GEAR
5	1	300503	GEAR CASE
6	1	310200	COVER ASSY. SEE NOTE #1
7	1	300706	GASKET SET
8	1	300800	BEARING CARRIER
9	1	300903	BEARING CARRIER
10	1	309600	SHAFT END COVER
11	1	310800	SEAL - OUTPUT SHAFT
12	1	301806	SEAL - SECONDARY SHAFT
13	1	301906	SHIM SET
14	1	302008	SHIM SET
15	1	302101	BEARING CONE
16	1	302201	BEARING CONE
17	5	005610	1/4 - 20 x 3/4 SOC HD CAPSCREW
18	8	020200	1/4 LOCKWASHER
19	2	007812	5/16 - 18 X 1 BUT TON - SOC - HD SCR
20	4	020601	5/16 LOCKWASHER
21	4	008404	3/8 - 16 X 1 BUT TON - SOC - HD - SCR
22	4	021402	3/8 LOCKWASHER SHAKEPROOF
23	1	040406	704 WOODRUFF KEY HARD (1/8 X 1/2)
24	1	060600	506 WOODRUFF KEY (3/16 X 3/4)
25	1	315325	KEY 3/8 X 3/8 X 1 1/2 RD END
26	3	000209	1/4 PIPE PLUG - SOC - HD
27	1	302406	VENT FITTING
28	1	302500	SEAL
29	1	SEE ASSY	BRAKE KIT
30	2 QT.	801200	MOBIL OIL *46 SAE 90
31	1	239004	ALEMITE 1728-B ZERK
32	2	800381	3/16 DIA X 1 1/16 LG. BRASS ROD
33	1	310700	SLEEVE BEARING
34	1	309600	PINION
35	1	400600	RETAINING RING
36	4	005606	1/4 X 7/8 NC GR 5 CAPSCREW
37	1	310600	ACTUATOR COVER
38	4	007811	5/16 X 1 NC GR 5 CAPSCREW
39	2	020702	5/16 LOCKWASHER SHAKEPROOF
40	4	021101	3/8 LOCKWASHER
41	2	008701	3/8 - 16 X 1 NC GR 5 CAPSCREW
42	2	008601	3/8 - 16 X 7/8 GR 5 CAPSCREW
43	-	-	QUILL (REF)
44	-	-	ANCHOR BRACKET (REF)
45	-	-	LINE UP BAR (REF)
46	1	302102	BEARING CUP
47	1	302202	BEARING CUP

CONTRACT NO.		AUTO CRANE CO.		9280 BROKEN ARROW EXPWY., TULSA, OKLA. 74145	
DRAWING NO.		DATE		TURNER ACTUATOR ASSY. (B-3153)	
APPROVED				SIZE CODE IDENT NO. DRAWING NO.	
CHECKED				D M-114	
DRAWN		JBH 6-23-70		SCALE 150(1/2) WEIGHT SHEET 1 OF 1	



ITEM	QUAN.	PART NO.	DESCRIPTION
1	1	200249	MOTOR 110 VOLT AC
	1	300105	12VDC, 24VDC
2	1	300205	PRIMARY GEAR
3	1	300306	SHAFT
4	1	300405	SECONDARY GEAR
5	1	300503	GEAR CASE
6	1	300601	COVER
7	1	300706	GASKET SET
8	1	300800	BEARING CARRIER
9	1	300803	BEARING CARRIER
10	1	301706	SEAL-OUTPUT SHAFT
11			PEDESTAL ASSY (REF)
12	1	301806	SEAL-SECONDARY SHAFT
13	1	301906	SHIM SET
14	1	302008	SHIM SET
15	1	302101	BEARING CONE
16	1	302201	BEARING CONE
17	5	005610	1/4 -20X3/4 SOC HD CAPSCREW
18	8	020200	1/4 LOCKWASHER
19	2	008601	3/8-16X7/8 HEX HD CAPSCREW
20	6	020601	5/16 LOCKWASHER
21	4	008404	3/8-16 X1 BUTTON HD SOC SCR
22	4	021402	3/8 LOCKWASHER SHAKEPROOF
23	1	040406	*404 WOODRUFF KEY(HARD 1/8X1/2)
24	1	060600	*606 WOODRUFF KEY(3/16X3/4)
25	1	060601	*E WOODRUFF KEY(3/8X1-1/4)
26	3	000209	1/4 PIPE PLUG - SOC HD
27	1	302406	VENT FITTING
28	1	302500	SEAL
29	1	SEE ASSY	BRAKE KIT
30	2QT.	801200	MOBIL OIL #46 SAE 90
31			
32	6	007811	5/16-18X1"GR 5 CAPSCREW
33	2	021101	3/8 LOCKWASHER
34	1	301006	SHAFT, OUT PUT
35	1	400600	RETAINING RING (RST-125)
36	4	005606	1/4-20 X7/8 GR 5 CAPSCREW
37	1	101024	1/4 X1/4 X4 KEYSTOCK (REF)
38	1	302102	BEARING CUP
39	1	302202	BEARING CUP

CONTRACT NO.		AUTO CRANE COMPANY	
AUTO CRANE CO.		9260 BROKEN ARROW EXPWY., TULSA, OKLA. 74145	
DRAWING NO.	DATE	ACTUATOR ASSEMBLY	
APPROVED		MODEL "B"	
CHECKED		(B-3000)	
DRAWN	JBH (7-21-70)	SIZE	CODE IDENT. NO. DRAWING NO.
		D	M-119
		SCALE	WEIGHT SHEET OF



NEW PART NO.	ITEM	QUAN.	PART NO.	DESCRIPTION
307201	1	1	B-3072	CHANNEL
① 307900	2	1	B-3079	BRACKET
① 308000	3	1	B-3080	COMPRESSION SPRING
① 019900	4	1		#10 FLAT WASHER-CAD PLATED
① 015700	5	1		#10-32 ACORN NUT-CAD PLATED
① 307300	6	1	B-3073-S	BRAKE BAND
① 307701	7	1	B-3077-A	BRAKE HUB ASSEMBLY
① 307500	8	1	B-3075	LEVER
① 022800	9	1	CL-3	1/8" CARBURETOR CLIP
	10			
306700	11	1	B-3067	GUARD, ACTUATOR BRAKE
004800	12	3		#10x3/8 SELF TAP PAN HD. SCR.
① 022700	13	1		SELOK PIN 3/32x1/2
①	14	1	SEE CHART	SOLENOID
003901	15	1		1/4-20x3/4 SOC. HD. CAP SCR.
① 015800	16	1		#10-32 SELF LOCKING NUT C.P.
① 002603	17	1		#10-32x2" LG. RD. HD. MACH. SCR. C.P.
005609	18	2		1/4-20x5/8 SOC. HD. CAP SCR.
① 001800	19	2		#10-32x1/4 FLAT HD. MACH. SCR.
016300	20	2		1/4-20 SELF LOCKING NUT C.P.
	21	-		ACTUATOR ASSY (REF)
102400	22	-	RBC-1024	HAND CRANK (REF)
005606	23	-		SCREW, HEX-HD-1/4-20x7/8 (REF)
040406	24	-		#404 WOODRUFF KEY (REF)

① THESE ITEMS INCLUDED IN REPLACEMENT BRAKE KIT B-3082-12V OR-24V. INDIVIDUAL PARTS MAY BE ORDERED SEPARATELY IF DESIRED.
 ② WHEN ORDERING PARTS BE SURE TO SPECIFY MODEL AND SERIAL NUMBER.

CONTRACT NO.	
AUTO CRANE CO.	
DRAWING NO.	DATE
APPROVED	
CHECKED	
DRAWN	JBH 7-27-70

AUTO CRANE COMPANY
 9260 BROKEN ARROW EXPWY., TULSA, OKLA. 74145

BRAKE ASSEMBLY 12/24
MAINTENANCE DRAWING

NEW PART NO.	308201	306401	
	308212	306412	
OLD PART NO.	B-3082-24V	B-3064-24D	D.C.
	B-3082-12V	B-3064-12D	D.C.
	BRAKE KIT	ITEM 14	

SIZE	CODE IDENT. NO.	DRAWING NO.
C		M-118
SCALE	NONE	WEIGHT
		SHEET OF

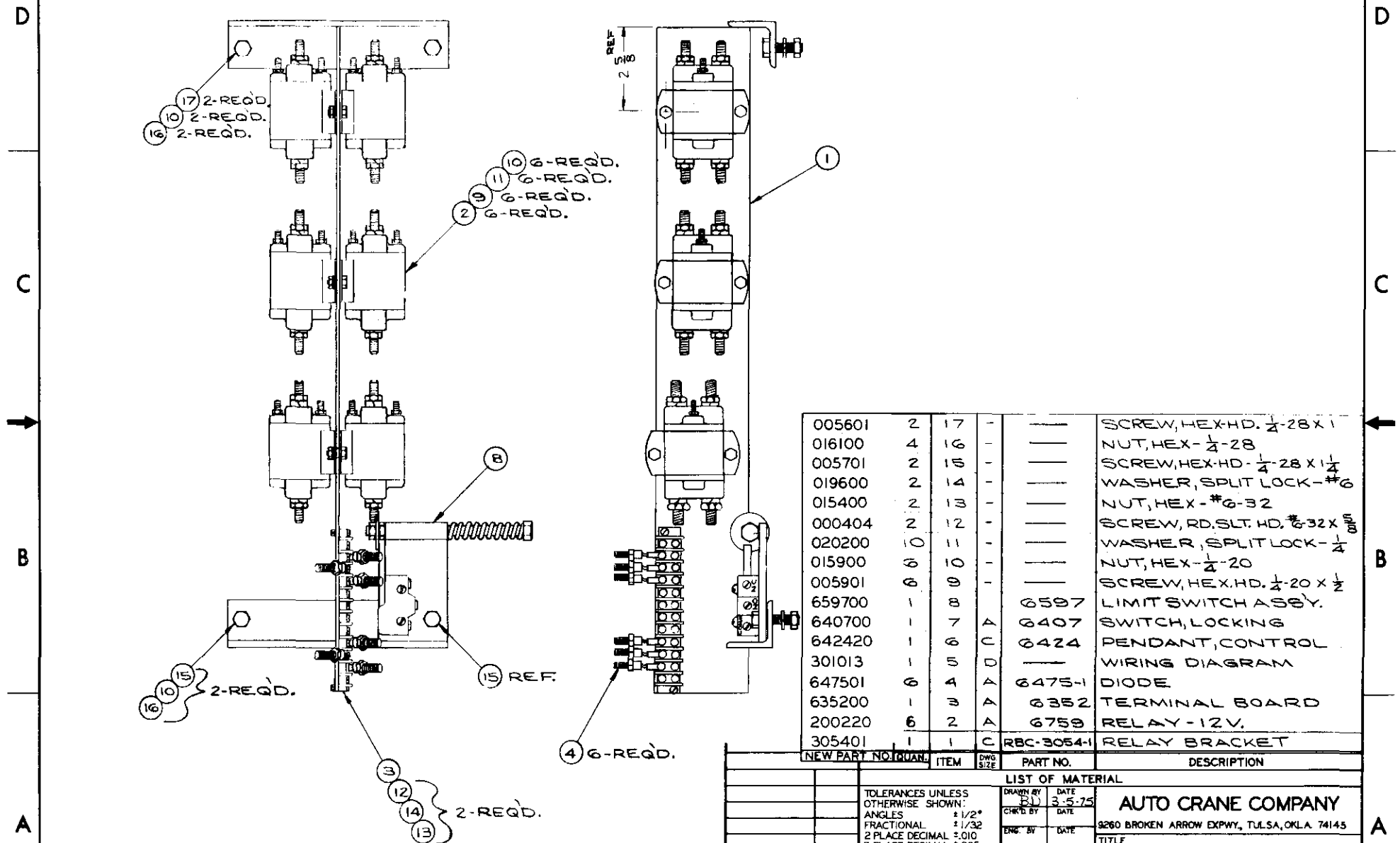
4

3

2

1

REVISION				
ZONE	LTR	DESCRIPTION	DATE	APPROVED



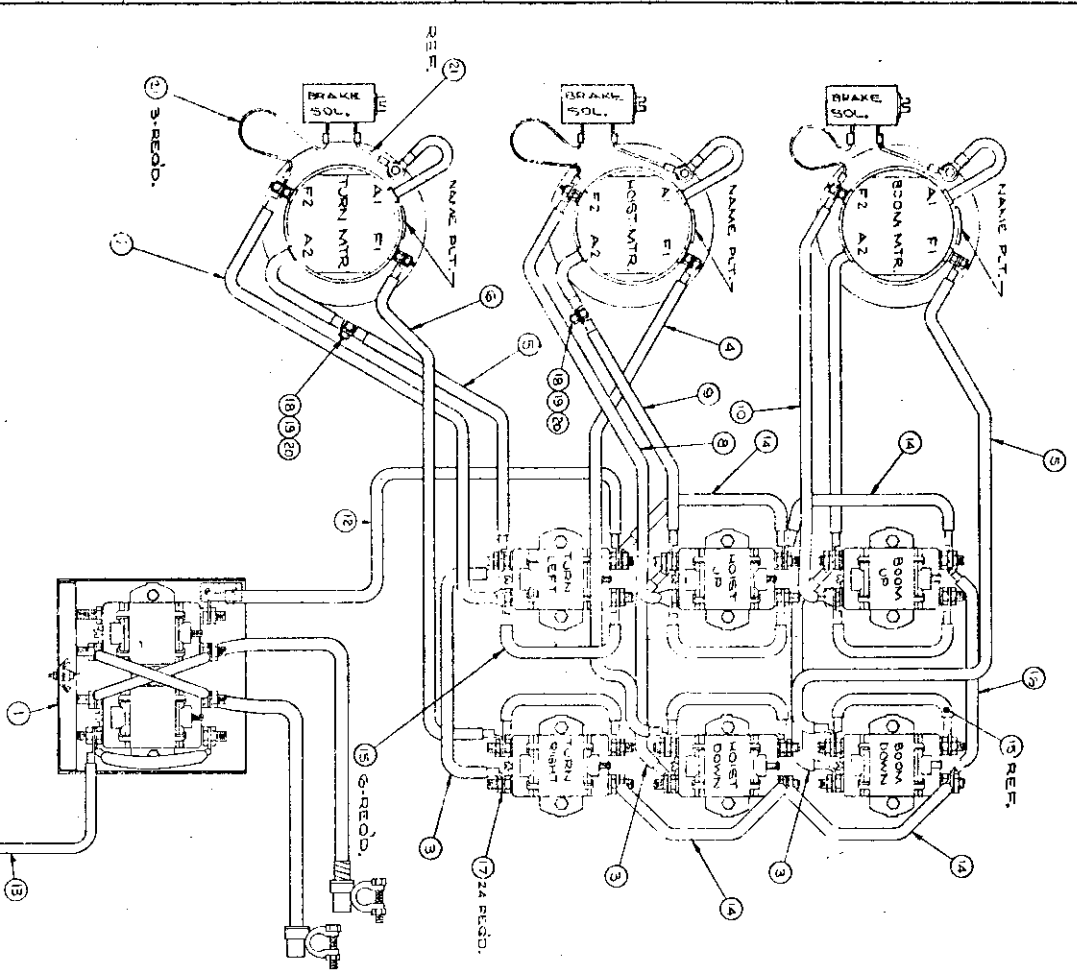
NOTE:
 1. ITEM-5,6 AND 7 NOT SHOWN.
 REFER TO DWG. 301013 FOR INSTALLATION.

ITEM	QTY	UNIT	DESCRIPTION
005601	2	17	SCREW, HEX.HD. 1/4-28 X 1
016100	4	16	NUT, HEX-1/4-28
005701	2	15	SCREW, HEX.HD. 1/4-28 X 1 1/4
019600	2	14	WASHER, SPLIT LOCK-#6
015400	2	13	NUT, HEX-#6-32
000404	2	12	SCREW, RD.SLT. HD. #32 X 1/4
020200	10	11	WASHER, SPLIT LOCK-1/4
015900	6	10	NUT, HEX-1/4-20
005901	6	9	SCREW, HEX.HD. 1/4-20 X 1/2
659700	1	8	6597 LIMIT SWITCH ASSY.
640700	1	7	6407 SWITCH, LOCKING
642420	1	6	6424 PENDANT, CONTROL
301013	1	5	WIRING DIAGRAM
647501	6	4	6475-1 DIODE
635200	1	3	6352 TERMINAL BOARD
200220	6	2	6759 RELAY-12V.
305401	1	1	RBC-3054-1 RELAY BRACKET

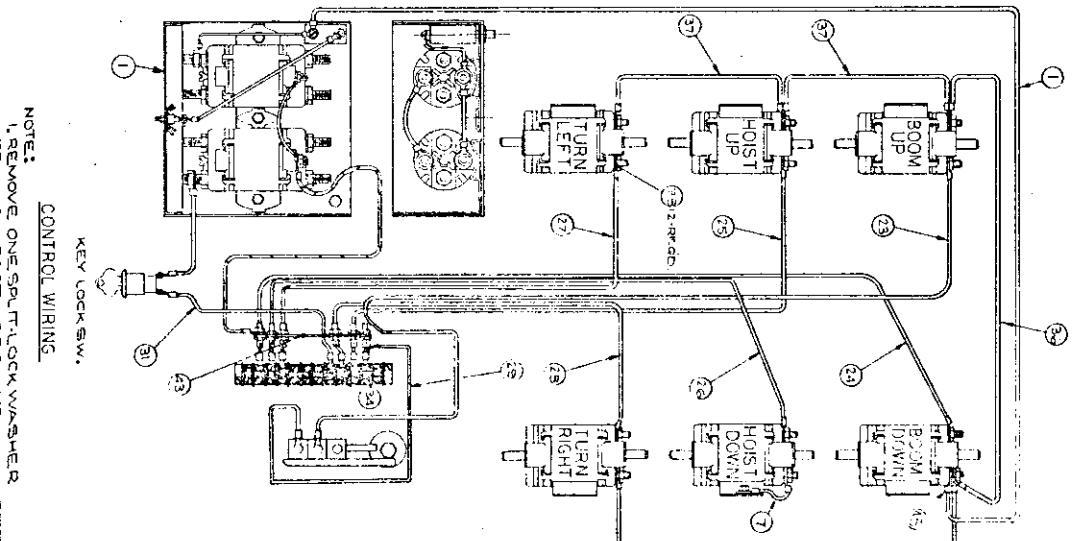
NEW PART	NOT QUANT.	ITEM	DWG SIZE	PART NO.	DESCRIPTION

TOLERANCES UNLESS OTHERWISE SHOWN:		LIST OF MATERIAL	
ANGLES	± 1/2°	DRAWN BY	DATE
FRACTIONAL	± 1/32	CHK'D BY	DATE
2 PLACE DECIMAL	± 0.010	ENG. BY	DATE
3 PLACE DECIMAL	± 0.005	APP'D BY	DATE
NORMALITY (1)	.002/IN	CONTRACT NO.	
PARALLELISM (1)	.002/IN	MATERIAL	
SHARP EDGES. DO NOT SCALE THIS DRAWING.		SIZE	CODE IDENT.
APPLICATION	WEIGHT	C	
		SCALE NONE	REV.
			SHEET OF

AUTO CRANE COMPANY
 9260 BROKEN ARROW EXPWY., TULSA, OKLA. 74145
 TITLE
RELAY PANEL ASSY.
 DRAWING NO.
 676100
 SHEET OF



POWER WIRING



CONTROL WIRING

NOTE:
 1. REMOVE ONE SPLIT LOCK WASHER FROM F.A. POST OF RELAYS (RETURN TO STOCK)
 2. ITEMS 39, 40, 41, 42, 44, 46, 47 NOT SHOWN, INSTALL AS RECD.
 3. ITEM 38, 2-RELD. NOT SHOWN, INSTALL AS RECD.

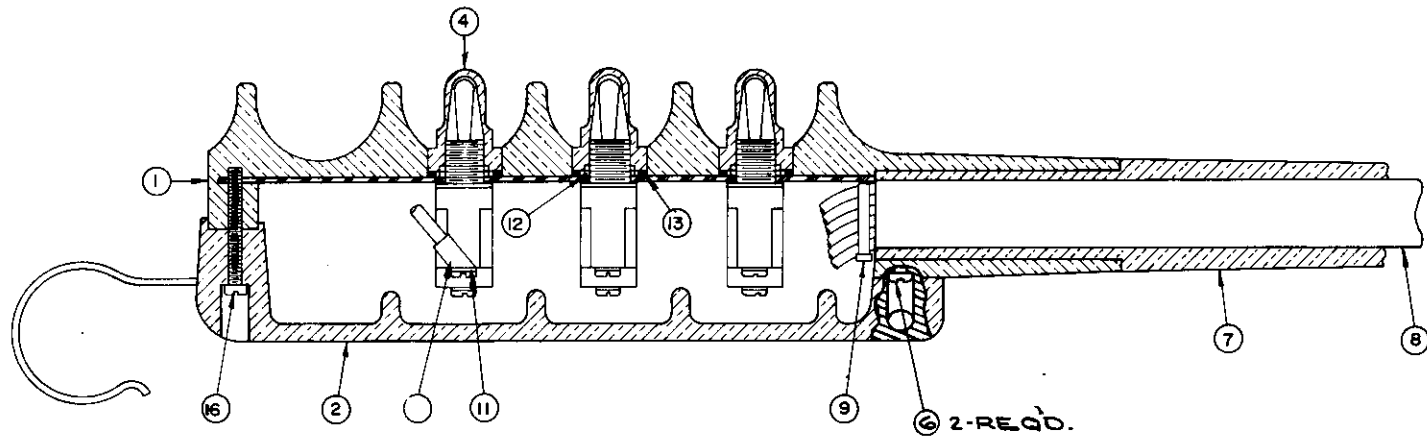
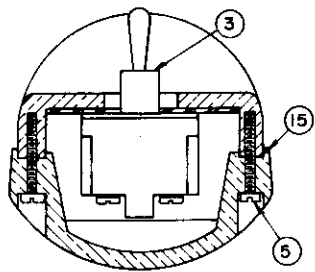
ITEM NO.	DESCRIPTION	QTY
1
2
3
4
5
6
7
8
9
10
11
12
13
14
15
16
17
18
19
20
21
22
23
24
25
26
27
28
29
30
31
32
33
34
35
36
37

ITEM NO.	DESCRIPTION	QTY
1	31160312 CONDUCTOR (WHT)	1
2	31160312 CONDUCTOR (WHT)	1
3	31160312 CONDUCTOR (WHT)	1
4	31160312 CONDUCTOR (WHT)	1
5	31160312 CONDUCTOR (WHT)	1
6	31160312 CONDUCTOR (WHT)	1
7	31160312 CONDUCTOR (WHT)	1
8	31160312 CONDUCTOR (WHT)	1
9	31160312 CONDUCTOR (WHT)	1
10	31160312 CONDUCTOR (WHT)	1
11	31160312 CONDUCTOR (WHT)	1
12	31160312 CONDUCTOR (WHT)	1
13	31160312 CONDUCTOR (WHT)	1
14	31160312 CONDUCTOR (WHT)	1
15	31160312 CONDUCTOR (WHT)	1
16	31160312 CONDUCTOR (WHT)	1
17	31160312 CONDUCTOR (WHT)	1
18	31160312 CONDUCTOR (WHT)	1
19	31160312 CONDUCTOR (WHT)	1
20	31160312 CONDUCTOR (WHT)	1
21	31160312 CONDUCTOR (WHT)	1
22	31160312 CONDUCTOR (WHT)	1
23	31160312 CONDUCTOR (WHT)	1
24	31160312 CONDUCTOR (WHT)	1
25	31160312 CONDUCTOR (WHT)	1
26	31160312 CONDUCTOR (WHT)	1
27	31160312 CONDUCTOR (WHT)	1
28	31160312 CONDUCTOR (WHT)	1
29	31160312 CONDUCTOR (WHT)	1
30	31160312 CONDUCTOR (WHT)	1
31	31160312 CONDUCTOR (WHT)	1
32	31160312 CONDUCTOR (WHT)	1
33	31160312 CONDUCTOR (WHT)	1
34	31160312 CONDUCTOR (WHT)	1
35	31160312 CONDUCTOR (WHT)	1
36	31160312 CONDUCTOR (WHT)	1
37	31160312 CONDUCTOR (WHT)	1

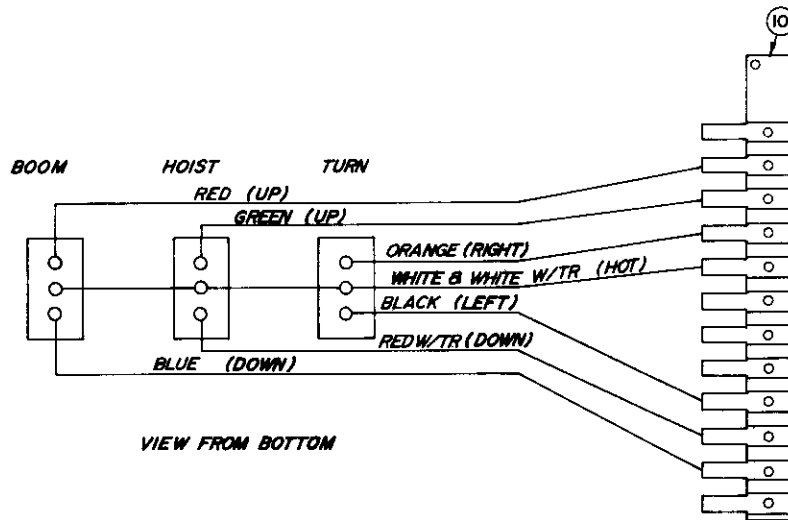
LIST OF MATERIAL

AUTO CRANE COMPANY
 5520 BOULEVARD, CHICAGO, ILL. 60648

CONTRACT NO. _____
 DRAWING NO. _____
 SHEET NO. _____ OF _____
 DATE _____
 DRAWN BY _____
 CHECKED BY _____
 APPROVED BY _____



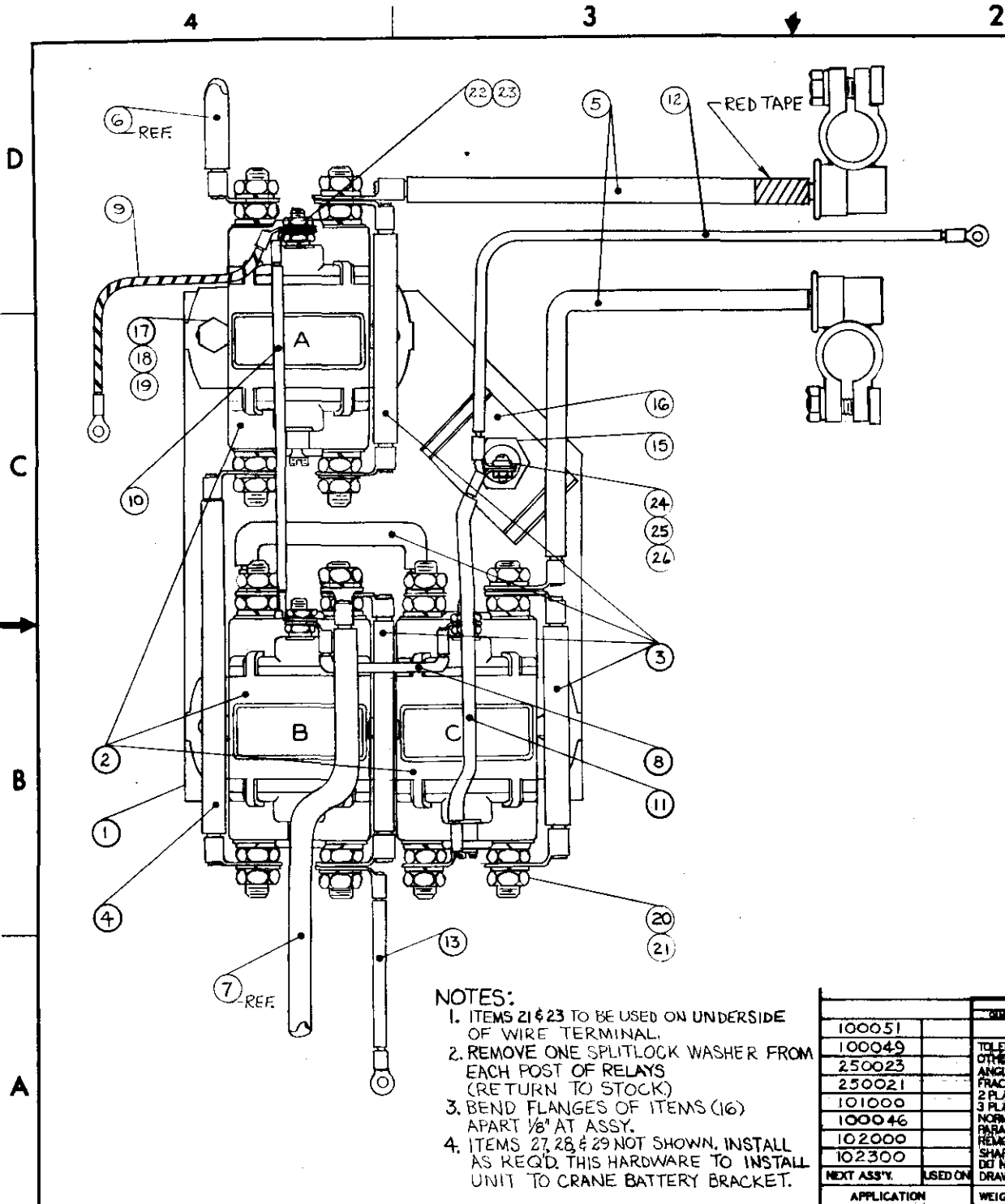
⑥ 2-REQD.



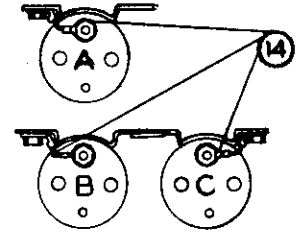
NEW PART NO.	ITEM	QUAN	PART NO.	DESCRIPTION
631602	1	1	6316-2	PENDANT HOUSING
631700	2	1	6317	BOTTOM COVER
622000	3	3	6220	TOGGLE SWITCH
640302	4	3	64030Z	BOOT-TOGGLE SWITCH
005001	5	10	TYPE B	SCREW, S.T. - SLT. PAN HD. #8 X 3/4
005101	6	2	TYPE B	SCREW, S.T. - SLT. PAN HD. #8 X 1/4
633801	7	1	6338-1	CABLE ADAPTER
800630	8	1	6542	CONDUCTOR CABLE (23') STD.
634401	9	2	6344-1	TY-RAP CABLE TIE
635301	10	1	63531	TERMINAL STRIP (90°)
000101	11	11	RB-M-6	TERMINALS T&B
675271	12	3	TS-10381	NUT (REF.)
642100	13	3	6421	O RING
800580	15	21'	10-2010	3/4 WIDTH OKONITE RUBBER TAPE
004700	16	1	TYPE B	SCREW, SLT. PAN HD. - ST. #8 X 1 1/2

REVISIONS			AUTO CRANE CO.	
NO.	DATE	BY	TULSA, OKLAHOMA	
1	5-27-68	D.MILLER	PENDANT ASSEMBLY	
2	2-24-70	EJ		
3	8-17-76	24G		
4	10-18-76	FC		
5	9-7-76	REC.		

DRAWN	SCALE	MATERIAL	NOTED
D.MILLER	FULL		
CHE'D	DATE 9-27-68	DRAWING NO. 642420	
TRACED	APP'D		



REVISIONS				
ZONE	LTR	DESCRIPTION	DATE	APP'D.
A		SEE E.C.N.	7/4/77	hca
B		SEE E.C.N.	9/18/78	hca



2	29	-	020200	1/4 LOCKWASHER
2	28	-	015900	1/4-20 NUT
2	27	-	005604	1/4-20 BOLT X 1" LG.
1	26	-	019600	WASHER, SPLIT LOCK #6
1	25	-	015500	NUT, HEX 6-32
1	24	-	000605	SCREW, MACHINE G-32 X 3/8
6	23	-	021501	WASHER, INT. LOCK #10
6	22	-	015600	10-32 NUT
12	21	-	020700	WASHER, INT. LOCK 5/16
12	20	-	016800	5/16 X 1/2 NUT
5	19	-	020200	1/4 LOCKWASHER
5	18	-	015900	1/4-20 NUT
5	17	-	005901	1/4-20 BOLT X 1/2 LG.
2	16	A	663400	HEAT SINK, DIODE
1	15	A	647400	DIODE
3	14	A	659602	CONDUCTOR (BLK)
1	13	A	660506	CONDUCTOR (RED)
1	12	A	659628	CONDUCTOR (WHT)
1	11	A	659608	CONDUCTOR (WHT)
1	10	A	660407	CONDUCTOR (BLK W/WHT TRACER)
1	9	A	660406	CONDUCTOR (BLK W/WHT TRACER)
1	8	A	660402	CONDUCTOR (BLK W/WHT TRACER)
1	7	A	603701	CONDUCTOR (BLK) REF.
1	6	A	603716	CONDUCTOR (BLK) REF.
2	5	A	603700	CONDUCTOR (BLK)
1	4	A	600305	CONDUCTOR (BLK)
4	3	A	600304	CONDUCTOR (BLK)
3	2	A	200220	RELAY-12V SPDT
1	1	B	301011	MOUNTING PLATE-VOLTAGE SW. UNIT

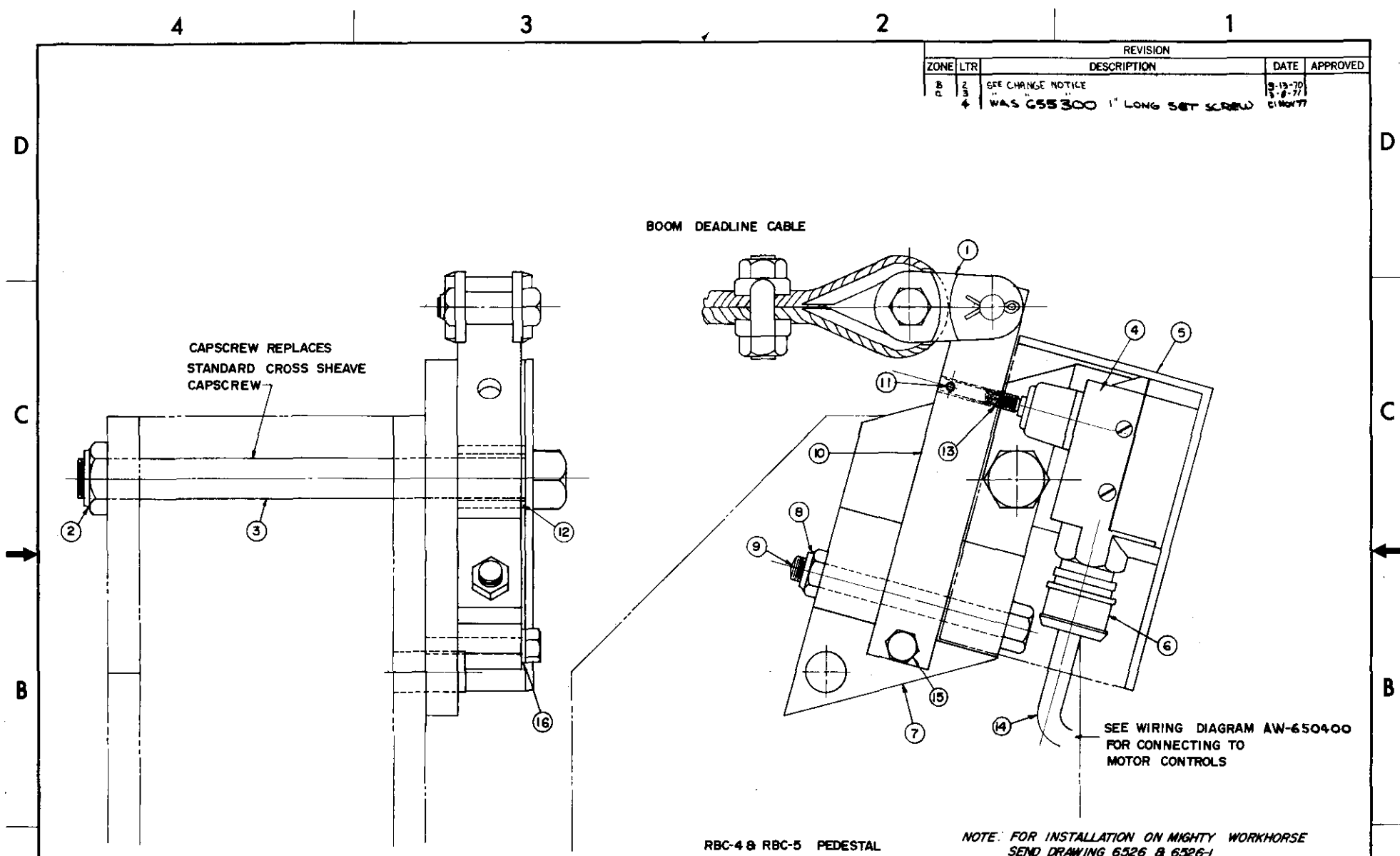
- NOTES:**
- ITEMS 21 & 23 TO BE USED ON UNDERSIDE OF WIRE TERMINAL.
 - REMOVE ONE SPLITLOCK WASHER FROM EACH POST OF RELAYS (RETURN TO STOCK).
 - BEND FLANGES OF ITEMS (16) APART 1/8" AT ASSY.
 - ITEMS 27, 28, & 29 NOT SHOWN. INSTALL AS REQ'D. THIS HARDWARE TO INSTALL UNIT TO CRANE BATTERY BRACKET.

QUANTITY	ITEM	SIZE	PART NO.	DESCRIPTION
100051				
100049				
250023				
250021				
101000				
100046				
102000				
102300				
NEXT ASSY. USED ON				
APPLICATION WEIGHT				

DRAWN BY		DATE		TITLE
AUSTIN	8/5/77			
CHK'D BY				
SIZE	W	DATE		
APPROV'D BY		DATE		
CONTRACT NO.				
REVISIONAL				
SIZE	CODE IDENT.	DRAWING NO.		
C		301012		
SCALE NONE		REV. B	SHEET 1 OF 1	

AUTO CRANE COMPANY
 8880 BROKEN ARROW EXPWY., TULSA, OKLA. 74145

REVISION				
ZONE	LTR	DESCRIPTION	DATE	APPROVED
B	2	SEE CHANGE NOTICE	3-13-70	
C	3		5-8-77	
	4	WAS 655300 1" LONG SET SCREW	21 Nov 77	



RBC-4 & RBC-5 PEDESTAL

NOTE: FOR INSTALLATION ON MIGHTY WORKHORSE SEND DRAWING 6526 & 6526-1

ITEM	QUAN	PART NO.	DESCRIPTION	ITEM	QUAN	PART NO.	DESCRIPTION
1	1	100801	CLEVIS	11	1	023700	1/8 X 3/4 ROLL PIN
2	(REF)	018100	5/8 NF HALF-LOCK-NUT	12	1	646700	SPACER
3	(REF)	013500	5/8 NF X 7-1/2 CAPSCREW	13	1	008902	SENSING ARM SCREW (4)
4	1	646900	SWITCH	14	1	655600	CONDUCTOR
5	1	650300	GUARD	15	1	005702	1/4-28 X 1-1/2 HEX CAPSCREW
6	1	642800	CLAMP	16	1	020200	1/4 LOCKWASHER
7	1	650200	BRACKET				
8	1	017400	3/8 NF HALF-LOCK-NUT				
9	1	009800	3/8 NF X 3-1/2 CAPSCREW				
10	1	646500	SENSING ARM				

CONTRACT NO. _____		AUTO CRANE COMPANY	
AUTO CRANE CO.		9260 BROKEN ARROW EXPWY., TULSA, OKLA. 74145	
DRAWING NO. _____ DATE _____		ASSEMBLY- LOAD LIMIT SWITCH	
APPROVED			
CHECKED			
DRAWN D.MILLER 4-7-69		SIZE C	CODE IDENT. NO. 650400
SCALE FULL	WEIGHT	SHEET OF	

8

7

6

5

↓

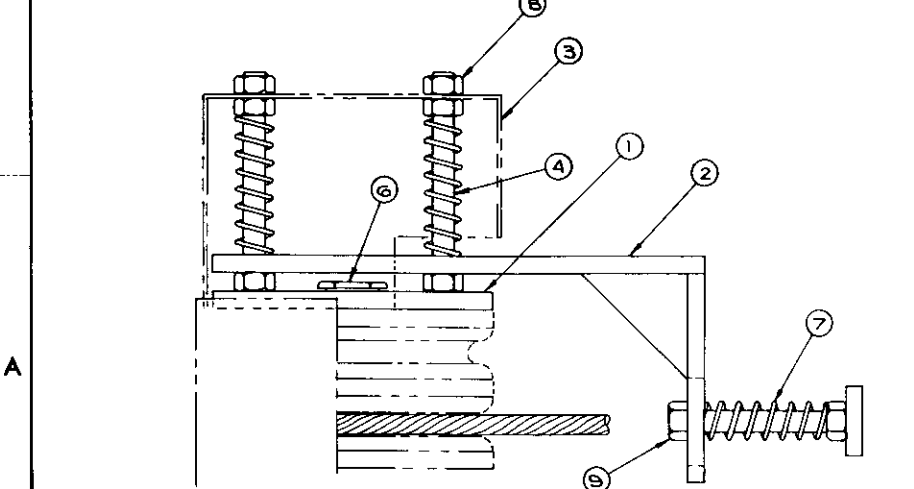
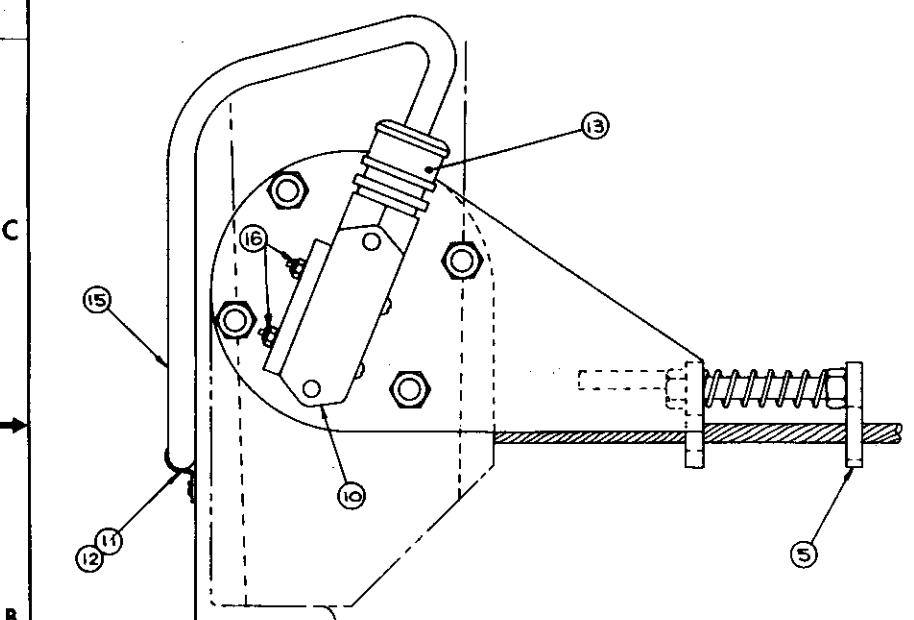
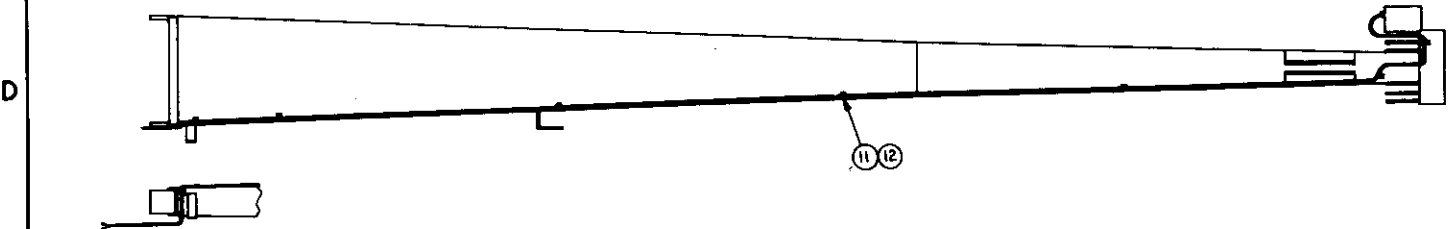
4

3

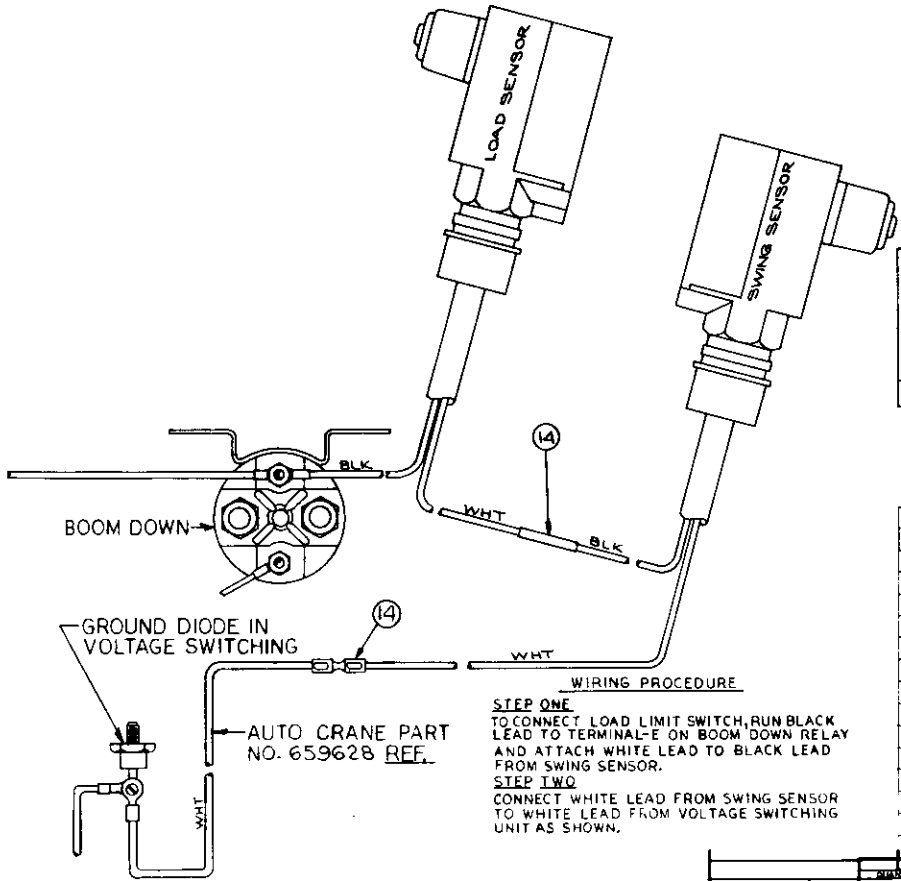
2

1

REVISIONS				
ZONE	LTR.	DESCRIPTION	DATE	APP'D.
	A	SEE ECN	11-3-76	TEK
	B	SEE ECN	8-5-77	GEA



NOTE:
1. DRILL 8 HOLES 5/32 DIA. AS REQ'D.
TO INSTALL ITEMS 11 AND 12.



WIRING PROCEDURE

STEP ONE
TO CONNECT LOAD LIMIT SWITCH, RUN BLACK LEAD TO TERMINAL-E ON BOOM DOWN RELAY AND ATTACH WHITE LEAD TO BLACK LEAD FROM SWING SENSOR.

STEP TWO
CONNECT WHITE LEAD FROM SWING SENSOR TO WHITE LEAD FROM VOLTAGE SWITCHING UNIT AS SHOWN.

BOOM	USAGE	PART NO.	DESCRIPTION
20 FT		650104	CONDUCTOR ASSY.
17 FT		650103	
14 FT		650102	
12 FT		650101	
9 FT		650100	

QTY	ITEM	PART NO.	DESCRIPTION
2	16	015410	NUT, HEX-LOCK #6-32
1	15	SEE CHART	CONDUCTOR ASSY
2	14	000302	TERMINAL, WIRE (SPLICE)
1	13	642808	CLAMP, CABLE
8	12	004800	SCREW, PAN-HD. S.T. #10 X 3/8
8	11	000115	CLIP, JIFFY
1	10	646800	SWITCH - W/ HARDWARE
1	9	007800	SCREW, HEX-HD. 3/16" 24 X 2 1/2
13	8	016600	NUT, HEX - 5/16" 24
5	7	301400	SPRING
1	6	649800	SCREW-MODIFIED
1	5	649800	PLATE, BUMP
4	4	649700	STUD
1	3	649600	GUARD
1	2	649501	SWING ARM
1	1	649400	PLATE, ANCHOR

QUANTITY	ITEM	SIZE	PART NO.	DESCRIPTION
TOLERANCES UNLESS OTHERWISE SHOWN: ANGLES FRACTIONAL 1/2" 2 PLACE DECIMAL 0.005 NORMALITY (L) 0.002/IN PARALLELISM (L) 0.002/IN REMOVE ALL BURRS AND SHARP EDGES. DO NOT SCALE THIS DRAWING.				
DRAWN BY DATE		LIST OF MATERIAL		
CHKD BY DATE		AUTO CRANE COMPANY		
ENG. BY DATE		BEBO BROKEN ARROW EXPTY, TULSA, OKLA 74145		
APPL. BY DATE		TITLE		
CONTRACT NO.		SWING LIMIT SENSOR ASSY.		
MATERIAL		SIZE	CODE IDENT.	DRAWING NO.
NEXT ASSY. USED ON		D		650000
APPLICATION WEIGHT		SCALE	NONE	REV B SHEET OF

9-20-0

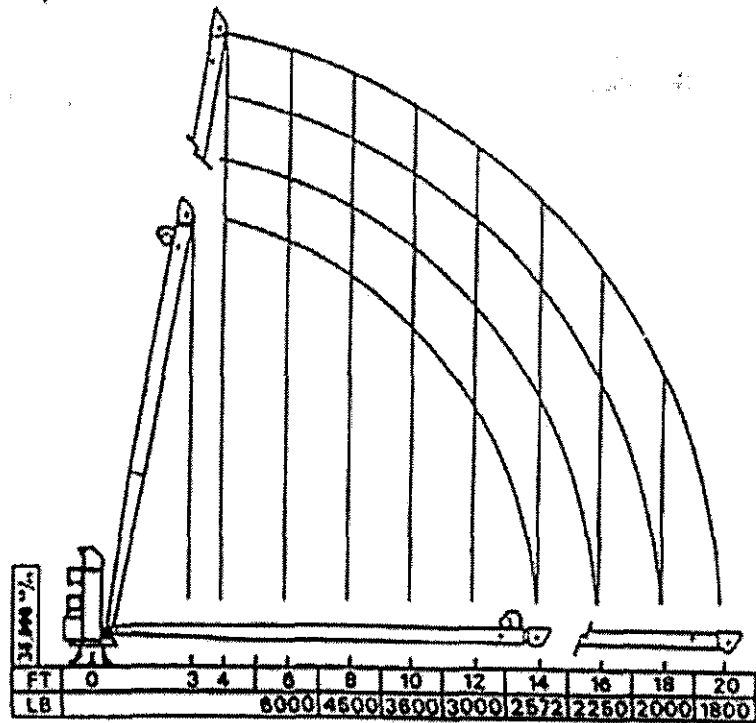
CHG
LTR

REVISIONS

DESCRIPTION

DATE

APP'D



ITEM	QTY	D/S	PART NO.	DESCRIPTION
------	-----	-----	----------	-------------

LIST OF MATERIAL

<p>UNLESS OTHERWISE NOTED ALL DIMENSIONS ARE IN INCHES. TOLERANCES UNLESS OTHERWISE SPECIFIED. ANGLES $\pm 1/2^\circ$.XX $\pm .040$ FRACTIONAL $\pm 1/16$.XXX $\pm .010$ REMOVE ALL BURRS AND SHARP EDGES. DO NOT SCALE THIS DRAWING. TOLERANCES NOT SHOWN ABOVE ARE PER ANSI Y14.5-1973</p>		DRAWN BY		<p>AUTO CRANE COMPANY P.O. BOX 580697 • TULSA, OKLAHOMA 74158-0697 4707 NORTH MINGO ROAD • 918-836-0463</p>	
		DATE			
		CHK'D BY		TITLE	
		DATE		LOAD CHART	
ENG. BY		SCALE	SIZE	DRAWING NO.	REVISION
DATE			A	AW-040611	
THIS PRINT IS THE PROPERTY OF AUTO CRANE CO. AND MUST NOT BE USED IN ANY MANNER DETRIMENTAL TO THEIR INTERESTS.		WEIGHT		SHEET <u>1</u> OF <u>1</u>	
NEXT ASS'Y					

9-20-0